



DELUX M618PR Wired Ergonomic Vertical Mouse User Manual

[Home](#) » [DELUX](#) » DELUX M618PR Wired Ergonomic Vertical Mouse User Manual 

Contents

- [1 DELUX M618PR Wired Ergonomic Vertical Mouse](#)
- [2 Functions of the Buttons](#)
- [3 Features](#)
- [4 Mouse Customisation](#)
- [5 Light Setting](#)
- [6 Warranty Conditions](#)
- [7 EU Declaration of Conformity](#)
- [8 Documents / Resources](#)
 - [8.1 References](#)
- [9 Related Posts](#)



DELUXE

DELUX M618PR Wired Ergonomic Vertical Mouse



Dear customer,

Thank you for purchasing our product. Please read the following instructions carefully before first use and keep this user manual for future reference. Pay particular attention to the safety instructions. If you have any questions or comments about the device, please contact the customer line.

www.alza.co.uk/kontakt

+44 (0)203 514 4411

Importer Alza.cz a.s., Jankovcova 1522/53, Holešovice, 170 00 Praha 7, www.alza.cz

Functions of the Buttons



1. Left key
2. Right key
3. Roller wheel
4. Forward key
5. Backward key
6. Removable palm rest
7. Light on/off
8. DPI key

Features

- Vertical mouse with innovative design.
- Scientific ergonomic design with removable palm rest, to reduce the hand and wrist pain.

Light Modes

Press the middle key and forward key at the same time to switch between 11 light modes. To turn the light either on or off, press the corresponding button (7).

DPI Switch

Press the DPI key (8) to switch DPI among five gears:

- 1000 DPI (red light)
- 2000 DPI (green light)
- 3000 DPI (blue light)
- 4000 DPI (purple light)
- 6200 DPI (yellow light)

Press the right key and the forward key at the same time for three seconds to disable or reenale the function of forward and backward keys.

Mouse Customisation

First, download the driver from: www.deluxworld.com/en/service/download/. Install the driver afterwards.

Note: Please make sure this mouse is already connected to the computer when installing the driver. After the driver is installed, you can proceed with setting up the mouse.

To customise your mouse, open the settings interface in the driver (note that mouse must be connected, otherwise driver software cannot be opened). There you can access basic settings, macros and advanced settings.

Buttons Customisation

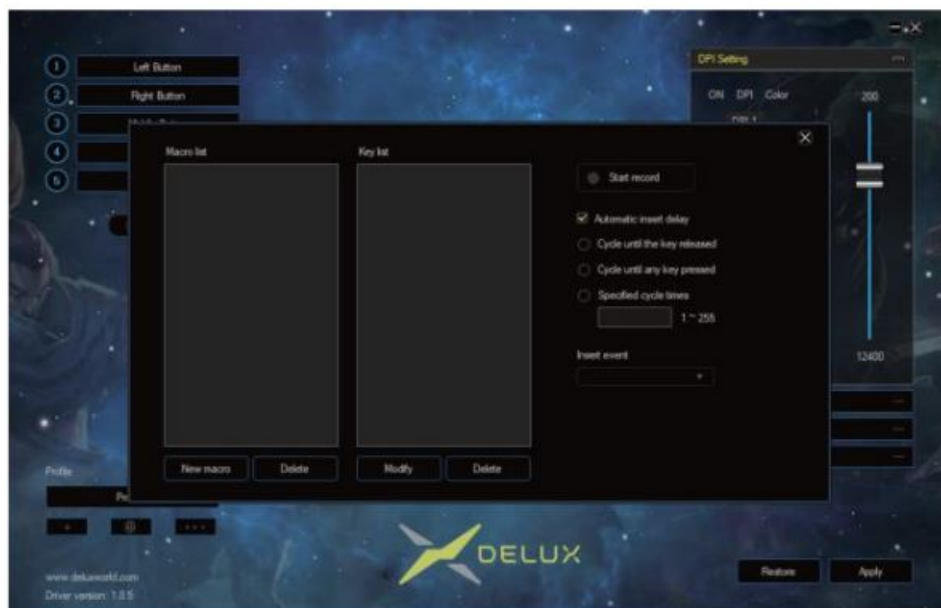
Click the buttons on the top left corner of the software interface. Here you can customise functions of the buttons.



Macro Settings

Click “Macro Editor” to enter the macro setting interface, click “new macro”, input the macro name, then select the name of your macro followed by “start recording macro”. During the recording process, you can enter the required keys on the keyboard, then click “stop recording macro”.

Operation instructions after entering Macro customization interface: Select the key you want to customise, click “macro definition” in the drop-down menu, select the macro name and click “apply”.



DPI Setting

On the right side of the interface, click “DPI Setting” to adjust DPI gear, DPI value modification and colour indication of the DPI gear.



Light Setting

On the right side of the interface, click “Lighting setting” to adjust the lighting effect of the mouse bottom. This way you can adjust brightness, speed and colour of the lighting.



Mouse Parameters Setting

On the right side of the interface, click “Mouse parameter” to adjust mouse sensitivity, speed and double-click speed. After you’re finished with the adjustments, click “apply”.



Warranty Conditions

A new product purchased in the [Alza.cz](https://www.alza.cz) sales network is guaranteed for 2 years. If you need repair or other services during the warranty period, contact the product seller directly, you must provide the original proof of purchase with the date of purchase.

The following are considered to be a conflict with the warranty conditions, for which the claimed claim may not be recognized:

- Using the product for any purpose other than that for which the product is intended or failing to follow the instructions for maintenance, operation, and service of the product.
- Damage to the product by a natural disaster, the intervention of an unauthorized person or mechanically through the fault of the buyer (e.g., during transport, cleaning by inappropriate means, etc.).
- Natural wear and aging of consumables or components during use (such as batteries, etc.).
- Exposure to adverse external influences, such as sunlight and other radiation or electromagnetic fields, fluid intrusion, object intrusion, mains overvoltage, electrostatic discharge voltage (including lightning), faulty supply or input voltage and inappropriate polarity of this voltage, chemical processes such as used power supplies, etc.
- If anyone has made modifications, modifications, alterations to the design or adaptation to change or extend the functions of the product compared to the purchased design or use of non-original components.

EU Declaration of Conformity

Identification data of the manufacturer's / importer's authorized representative: Importer: [Alza.cza.s](https://www.alza.cz).

Registered office: Jankovcova 1522/53, Holešovice, 170 00 Prague 7

CIN: 27082440

Subject of the declaration:

Title: Vertical Mouse

Model / Type: Delux M618PR

The above product has been tested in accordance with the standard(s) used to demonstrate compliance with the essential requirements laid down in the Directive(s):

Directive No. 2014/53/EU


Directive No. 2011/65/EU as amended 2015/863/EU

Prague, 30.9.2022








WEEE

This product must not be disposed of as normal household waste in accordance with the EU Directive on Waste Electrical and Electronic Equipment (WEEE – 2012/19 / EU). Instead, it shall be returned to the place of purchase or handed over to a public collection point for the recyclable waste. By ensuring this product is disposed of correctly, you will help prevent potential negative consequences for the environment and human health, which could otherwise be caused by inappropriate waste handling of this product. Contact your local authority or the nearest collection point for further details. Improper disposal of this type of waste may result in fines in accordance with national regulations.

Documents / Resources

 <p>M618PR User Manual - Czech/Slovak manual - Výhradní servis - Österreich/Österreich Benutzerhandbuch</p>	<p>DELUX M618PR Wired Ergonomic Vertical Mouse [pdf] User Manual M618PR Wired Ergonomic Vertical Mouse, M618PR, Wired Ergonomic Vertical Mouse, Ergonomic Vertical Mouse, Vertical Mouse, Mouse</p>
--	---

References

-  [Alza.sk – rýchly a pohodlný nákup odkiaľkoľvek | alza.sk](#)
-  [alza.at](#)
-  [alza.co.uk](#)
-  [alza.de](#)
-  [alza.hu](#)
-  [alza.sk](#)
-  [DELUX | GAMING DEVICE | ERGONOMIC MOUSE AND KEYBOARD | OFFICE DEVICE](#)