



DELUX M32001 2.4G Wireless Keyboard and Mouse Combo User Manual

[Home](#) » [DELUX](#) » DELUX M32001 2.4G Wireless Keyboard and Mouse Combo User Manual 

Contents

- [1 DELUX M32001 2.4G Wireless Keyboard and Mouse Combo](#)
- [2 Features](#)
- [3 Battery Installation to the Keyboard](#)
- [4 Battery Installation to the Mouse](#)
- [5 Receiver Connection](#)
- [6 Working Environment](#)
- [7 Debugging Tips](#)
- [8 FCC Caution](#)
- [9 Documents / Resources](#)
- [10 Related Posts](#)

deluxe

DELUX M32001 2.4G Wireless Keyboard and Mouse Combo



Features

2.4G wireless keyboard

- 2.4G wireless technology, 10M effective distance
- Unique structure design, simple to operate
- Special finishing for the keycaps, prolong the lifetime
- Power saving design, effectively prolong the battery lifetime
- Low battery voltage detection and indicator

2.4G wireless mouse

- 2.4G wireless technology, 10M effective distance
- Ergonomics design, comfortable to use
- Optical engine wireless mouse
- Low battery voltage detection and indicator

Battery Instruction

- Please take out the battery if you do not use the wireless keyboard and mouse for a long time, and keep them in a cool and dry place.
- Please do not use the battery if leaking, discoloration, distortion or other abnormality happens.

Battery Installation to the Keyboard

1. Open the battery cover.
2. Put into the battery in correct direction.
3. Close the battery cover.

A lower battery indicator is designed for the keyboard. It will flash when the battery is running out. At this time please change the battery.

Battery Installation to the Mouse

1. Open the battery cover (on the mouse bottom or top cover).
2. Put into the battery in correct direction.
3. Close the battery cover.

In order to achieve the best economical effect, intelligent power saving technology is adopted. When your mouse stops moving, it will switch to the power-saving mode automatically. If your mouse stops working for several minutes, it will enter the deep power-saving mode, which cost little battery.

Tips

- Press the power switch to OFF if not using it for a long time.
- It will save more power to use the optical mouse on white surface than on the black.

Receiver Connection



- Insert the USB receiver to the computer by USB port, your wireless combo will work normally.
You need to build up again the connection between the keyboard (or mouse) and receiver if following situation happens:
- There is radio disturbance from other wireless keyboard or mouse.
- Somebody try to build up the connection but failed.

Build Up the Connection Between the Mouse and Receiver

If the mouse cannot work normally, please take out the Nano receiver from computer USB port firstly, and then insert again. If still cannot work, then try to build up the connection between mouse and receiver. Take out the Nano receiver from your computer USB port and insert again, do keep 10 CM effective distance between mouse and receiver when building up the connection. Switch ON/OFF button to be ON mode (if have). Press the Middle Button and Right Button at the same time for about 3~5 seconds. (Or press the Left, Middle and Right buttons at the same time for about 5 seconds for some models). After that release the all buttons, the mouse can work normally after connection being built successfully. If not, please repeat the above steps.

Build Up the Connection Between the Keyboard and Receiver

Take out the receiver from computer USB port and insert again. Keep 20cm distance between the keyboard and receiver. Press “ESC+K+P” keys at the same time for about 3~5 seconds, the indicator on the top right corner will light or flash. Release the keys then the connection is successful, the keyboard can work normally. If not, please repeat the steps.

Working Environment

- The receiver should be far away from the monitor, outside disc driver or other electronic products. 20 CM distance is suggested in order to prevent the radio disturbance produced by other electronic products.
- The radio signal can penetrate lignin, glass and other the non-metallic objects, realizing 360 degree free transmit, however, it can not penetrate the metal materials. So please not put the mouse, keyboard and the receiver onto the metallic tabletop. The ideal distance is above 20 CM.
- Please be sure there is no big metal between the mouse (keyboard) and receiver, other wise the connection will be affected.
- Optical mouse is suitable for operating media wooden, paper or cloth, but not for the ratent, such as glass and smooth rubber. A mouse pad is needed in such environment.
- The standardized receiving distance we offered is under certain radio disturbance environment, the normal environment are better, the actual receiving distance is higher than standardized, but if mix-machine, motor, electric drill and other strong electronic equipments operating nearby, which may lead to slowly receiving or other abnormity.

Debugging Tips

- Check the receiver again, and make sure it is connected to the USB port.
- Check the battery direction should be correct.
- Re-establish the mouse (or keyboard) and the receiver communication channel.
- Reduce the distance of the receiver and the mouse (or keyboard).
- Change new battery.
- Put the “On/Off” button to “On”.

FCC Caution

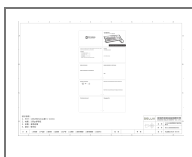
This device complies with part 15 of the FCC Rules. Operation is subject to the following two conditions: (1) This device may not cause harmful interference, and (2) this device must accept any interference received, including interference that may cause undesired operation. Any Changes or modifications not expressly approved by the party responsible for compliance could void the user’s authority to operate the equipment.

Note: This equipment has been tested and found to comply with the limits for a Class B digital device, pursuant to part 15 of the FCC Rules. These limits are designed to provide reasonable protection against harmful interference in a residential installation. This equipment generates uses and can radiate radio frequency energy and, if not installed and used in accordance with the instructions, may cause harmful interference to radio communications. However, there is no guarantee that interference will not occur in a particular installation. If this equipment does cause harmful interference to radio or television reception, which can be determined by turning the equipment off and on, the user is encouraged to try to correct the interference by one or more of the following measures:

- Reorient or relocate the receiving antenna.
- Increase the separation between the equipment and receiver.
- Connect the equipment into an outlet on a circuit different from that to which the receiver is connected.
- Consult the dealer or an experienced radio/TV technician for help.

The device has been evaluated to meet general RF exposure requirement. The device can be used in portable exposure condition without restriction.

Documents / Resources



[DELUX M32001 2.4G Wireless Keyboard and Mouse Combo](#) [pdf] User Manual
KA19001, SGPKA19001, M32001, SGPM32001, M32001 2.4G Wireless Keyboard and Mouse Combo, 2.4G Wireless Keyboard and Mouse Combo