



# DELTACO DELO-0159 Universal Mobile CPU Stand User Manual

[Home](#) » [DELTACO](#) » DELTACO DELO-0159 Universal Mobile CPU Stand User Manual 

## Contents

- [1 DELTACO DELO-0159 Universal Mobile CPU Stand](#)
- [2 Product Information: Universal Mobile CPU Stand](#)
- [3 Product Features](#)
- [4 Product Usage Instructions](#)
- [5 TOOLS REQUIRED](#)
- [6 INSTALLATION INSTRUCTION](#)
- [7 Documents / Resources](#)

# DELTACO

**DELTACO DELO-0159 Universal Mobile CPU Stand**



## Product Information: Universal Mobile CPU Stand

The Universal Mobile CPU Stand (DELO-0159) is a product manufactured by a Nordic brand. It is designed to provide a mobile platform for your CPU, allowing you to easily move it around your office or workspace as needed. This product is suitable for use with a range of different CPU sizes and shapes, making it a versatile addition to any office setup.

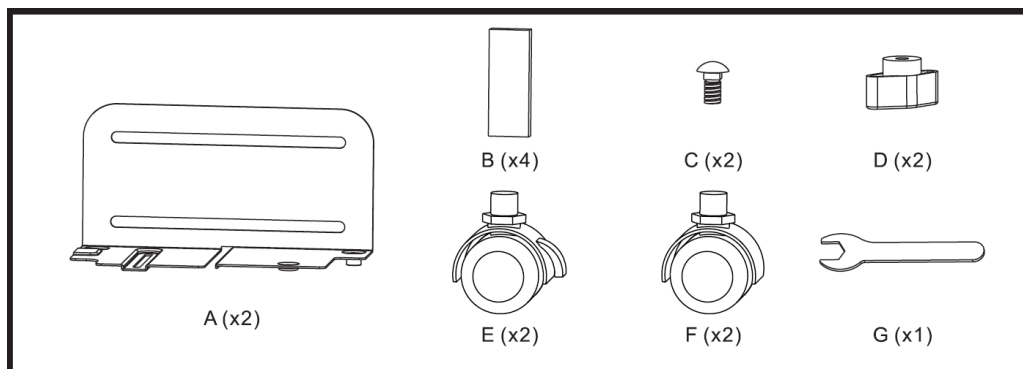
## Product Features

- Mobile platform for easy movement of your CPU
- Universal design to fit a range of CPU sizes and shapes
- Durable construction for long-lasting use
- Compact size to minimize floor space usage

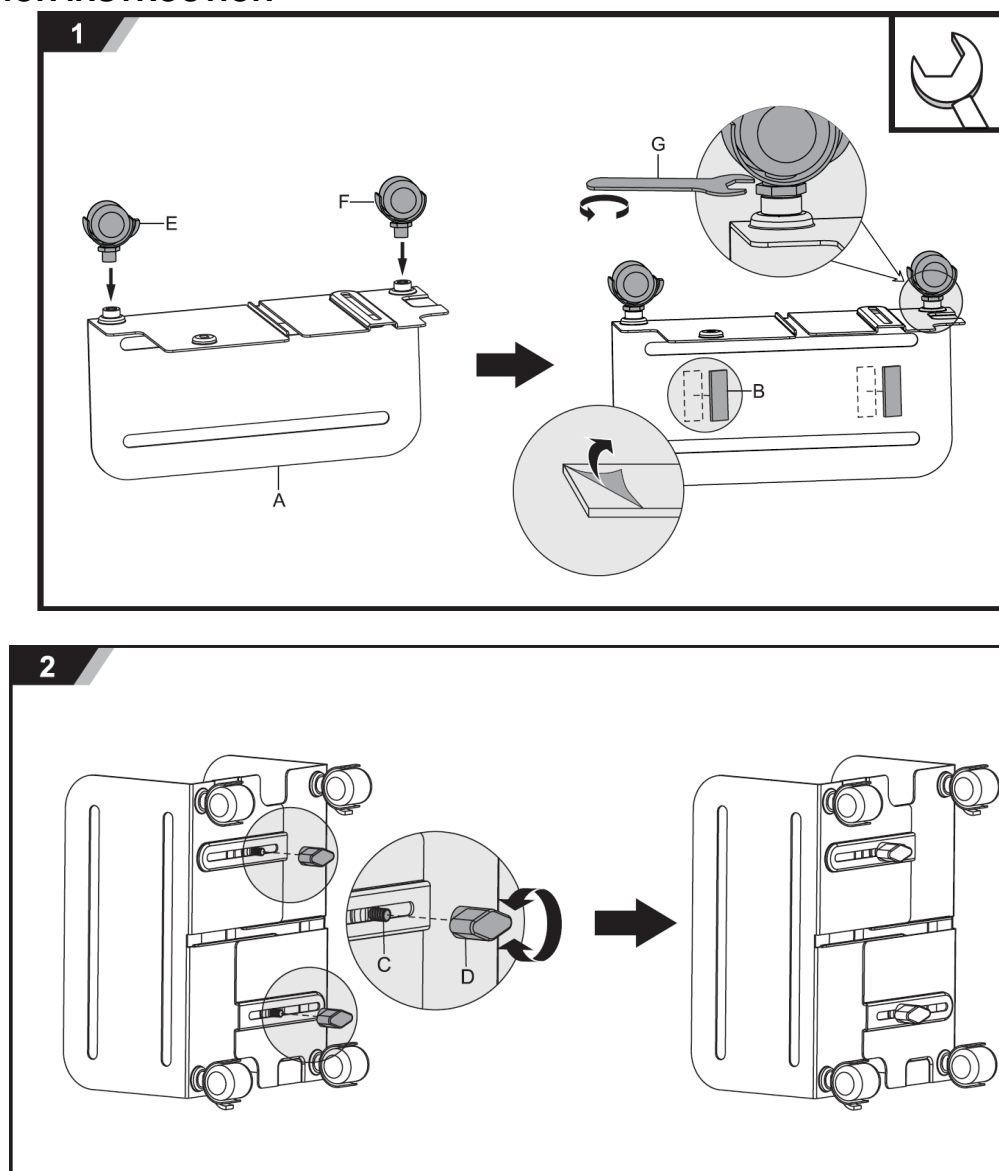
## Product Usage Instructions

1. Ensure that your CPU is turned off and unplugged from any power sources before attempting to move it.
2. Place the Universal Mobile CPU Stand on a flat, stable surface.
3. Adjust the width of the stand to fit your CPU by sliding the two side panels apart or together.
4. Carefully place your CPU onto the stand, ensuring that it is centered and secure.
5. Use the locking mechanism on the stand to secure your CPU in place.
6. You can now move your CPU around your workspace as needed, using the wheels on the bottom of the stand.
7. When you are finished using the stand, ensure that your CPU is turned off and securely locked in place before moving it back to its original location.

## TOOLS REQUIRED



## INSTALLATION INSTRUCTION



$a \geq b$

## Documents / Resources

[illegible]

