



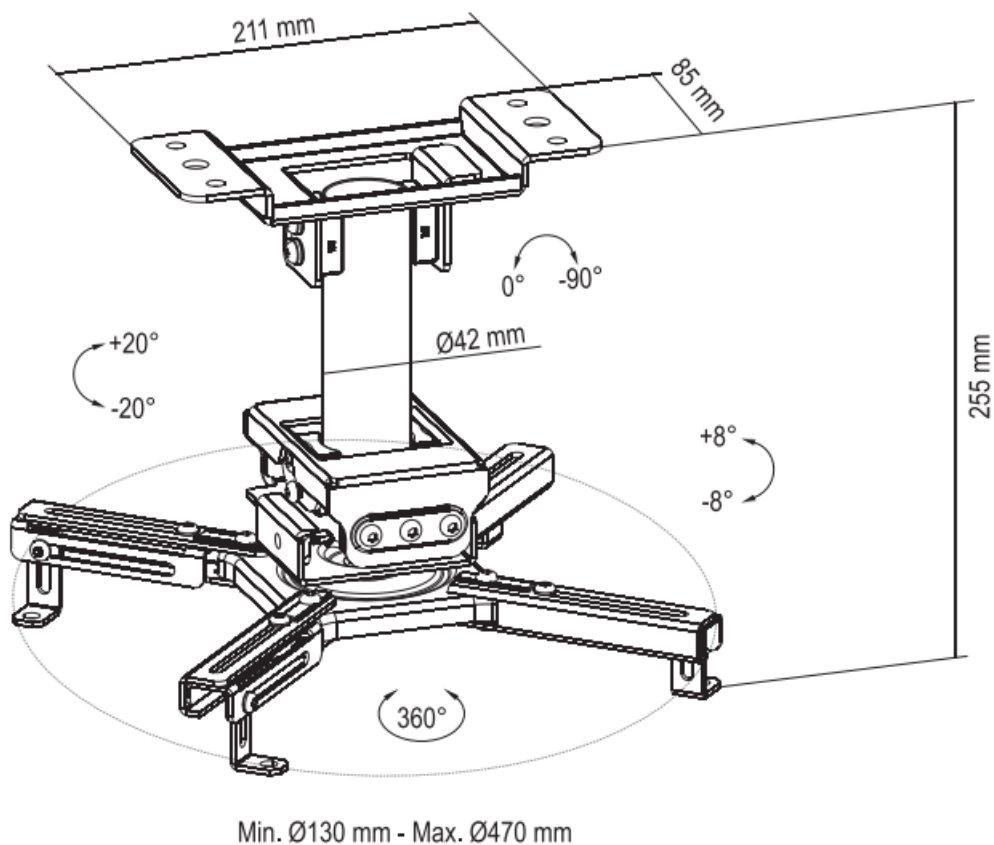
DELTACO ARM-0410 Projector Ceiling Mount User Manual

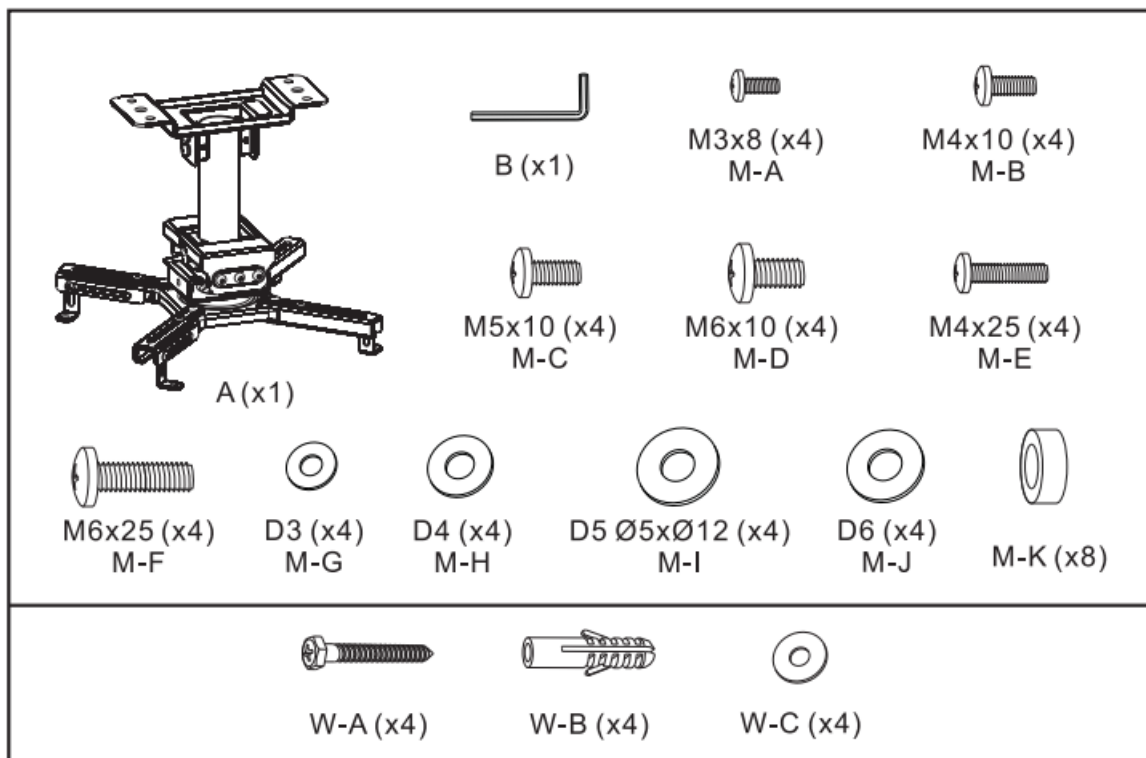
[Home](#) » [DELTACO](#) » DELTACO ARM-0410 Projector Ceiling Mount User Manual 

Contents

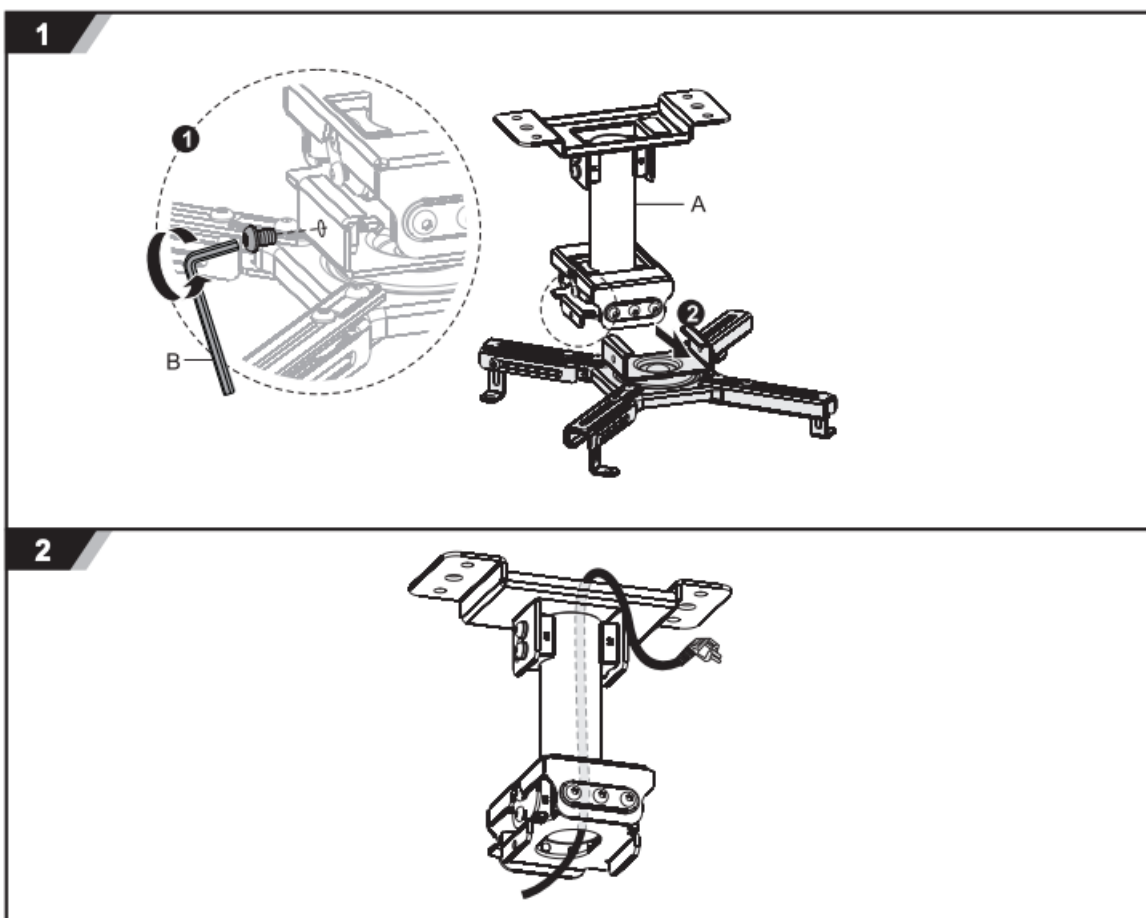
- [1 DELTACO ARM-0410 Projector Ceiling Mount User Manual](#)
- [2 Documents / Resources](#)
- [3 Related Posts](#)

DELTACO ARM-0410 Projector Ceiling Mount User Manual

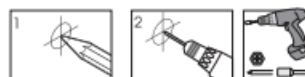
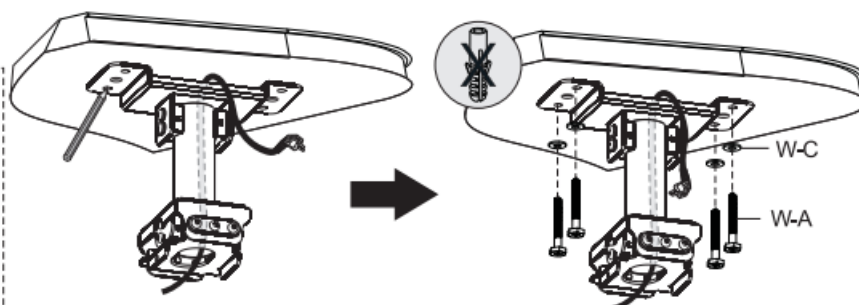
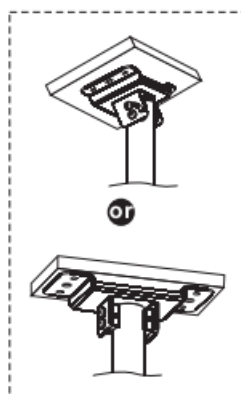




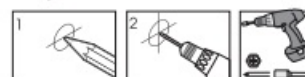
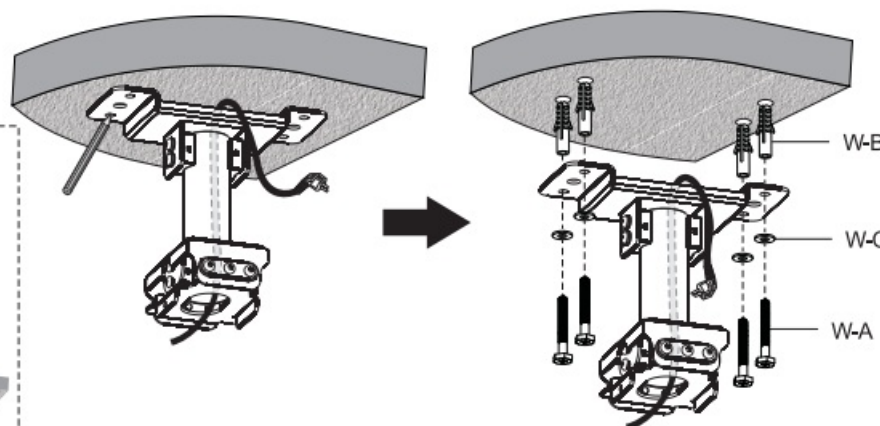
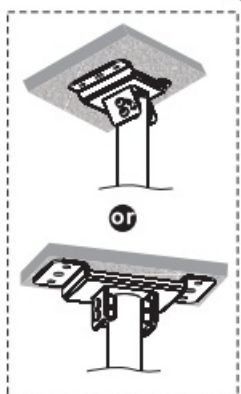
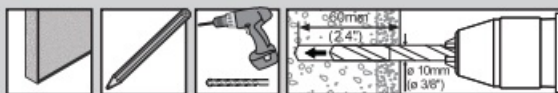
DELTA A NORDIC BRAND

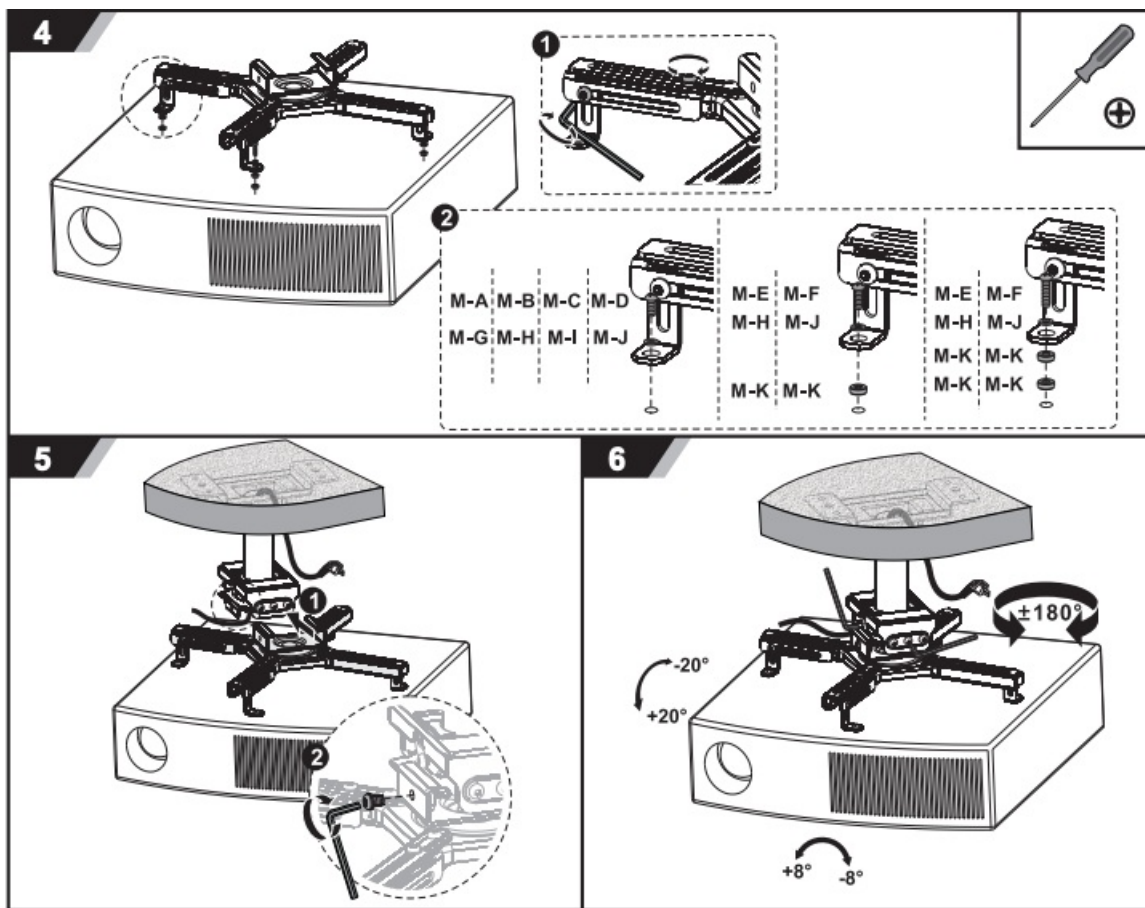


3a



3b





1. Read the entire instruction manual before you start installation and assembly. If you have any questions regarding any of the instructions or warnings, please contact your retailer for assistance.
2. Caution: Usage together with products heavier than the rated weight may result in instability which can cause possible injury.
3. Must be attached as specified in assembly instructions. Improper installation may result in serious injury.
4. Safety gear and proper tools must be used. This product should only be installed by a qualified person.
5. Make sure that the supporting surface will safely support the combined weight of the equipment and all attached hardware and components.
6. Use the mounting screws provided and do not over tighten the mounting screws.
7. This product contains small items that could be a choking hazard if swallowed. Keep these items away from children.
8. This product is intended for indoor use only. Using this product outdoors could lead to product failure and personal injury.
9. Important: Ensure that you have received all parts according to the component checklist prior to installation. If any parts are missing or faulty, contact Deltaco or the retailer where you purchased the product.
10. Caution: Do not exceed the marked max weight. Serious injury or property damage may occur!
11. Check that it is secure and safe to use, at regular intervals (at least every three months).

 SweDeltaco AB, Glasfibergatan 8, 125 45 Älvsjö, Sweden

Documents / Resources

