



T118 3 Port Three  
and Six Function  
Diverter Trim



# DELTA T118 3 Port Three and Six Function Diverter Trim Instruction Manual

[Home](#) » [Delta](#) » DELTA T118 3 Port Three and Six Function Diverter Trim Instruction Manual 

## Contents

- [1 DELTA T118 3 Port Three and Six Function Diverter Trim](#)
- [2 Instruction](#)
- [3 Water Flow For 3 Function Diverter](#)
- [4 Water Flow For 6 Function Diverter](#)
- [5 CLEANING AND CARE](#)
- [6 Documents / Resources](#)
  - [6.1 References](#)



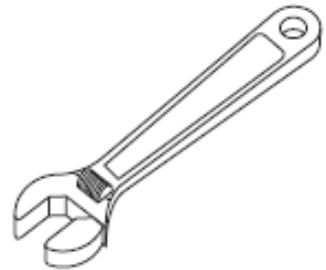
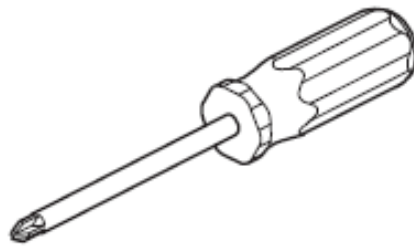
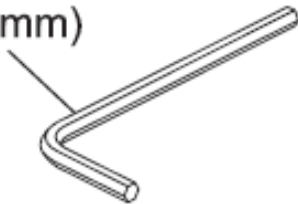
**DELTA T118 3 Port Three and Six Function Diverter Trim**



**Rough-in R11000 required for installation**

You may need

1/8"  
(3.17 mm)

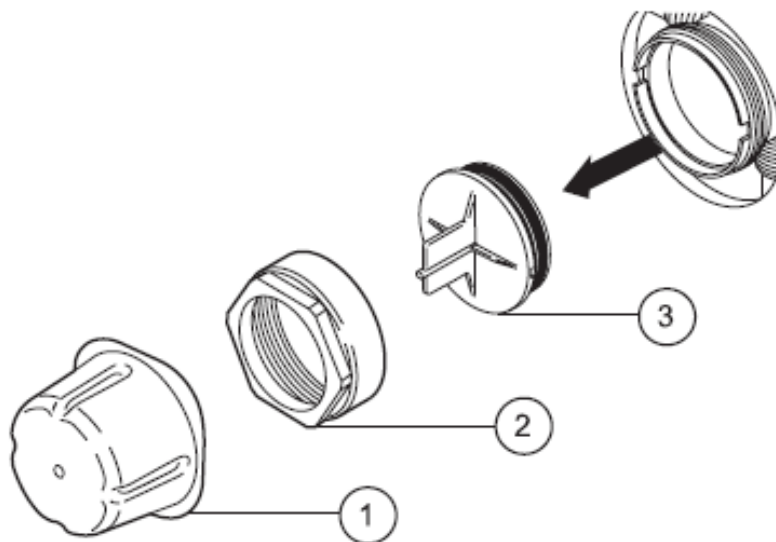


For replacement parts, visit [www.deltafaucet.com](http://www.deltafaucet.com)

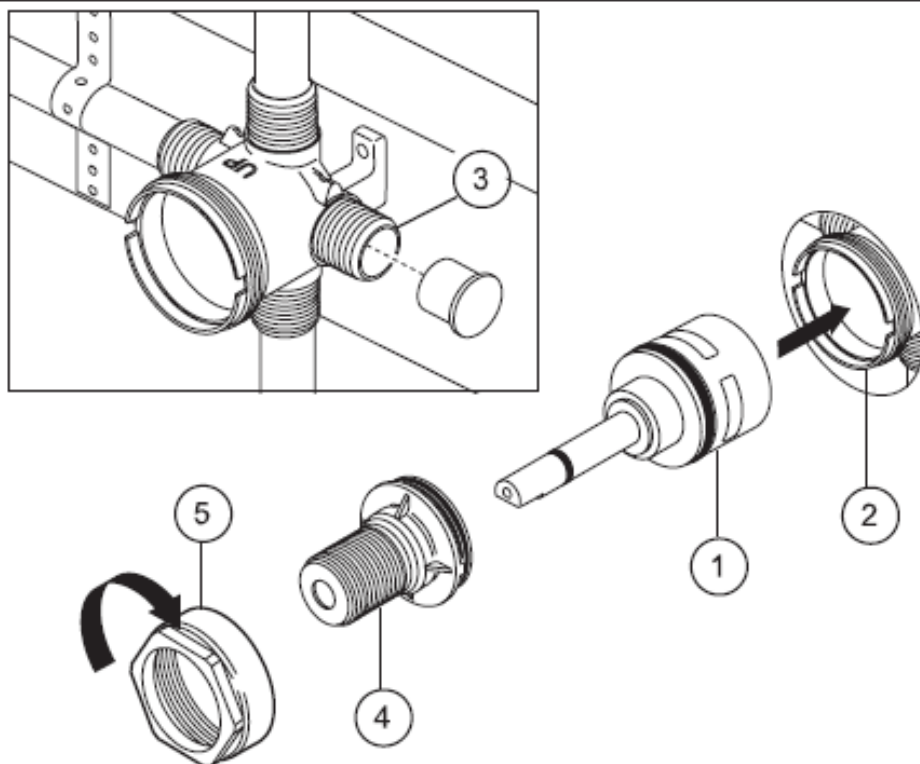
## Instruction

# 1

## A.



## B.

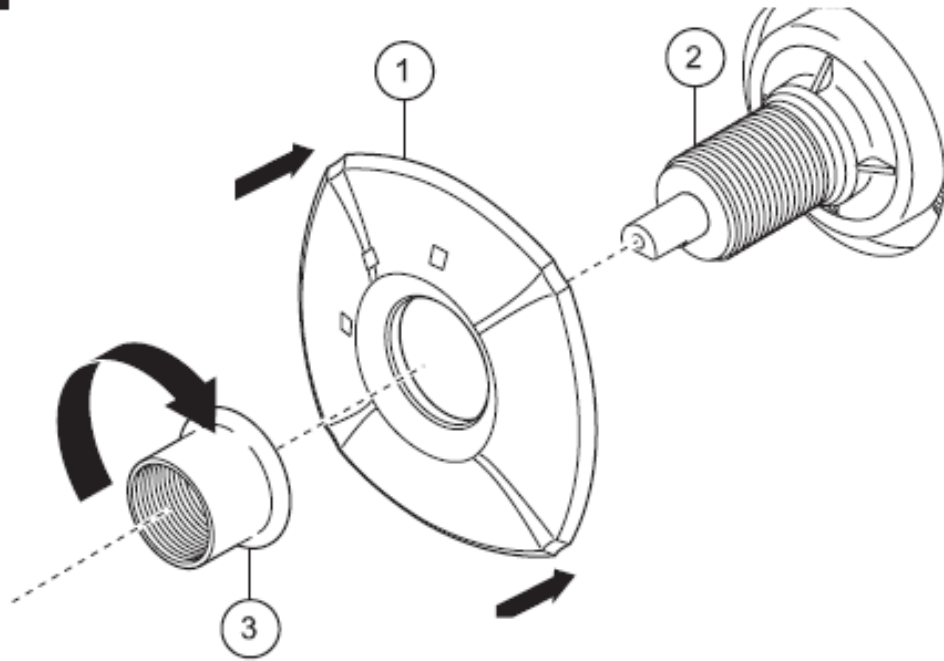


- **A** When the diverter is ready for trim remove plaster guard (1 ), bonnet (2) and test cap (3) from the body.
- **B** Install cartridge assembly (1) into body (2) assuring that the locating pin on the bottom of the cartridge aligns with mating hole in body.

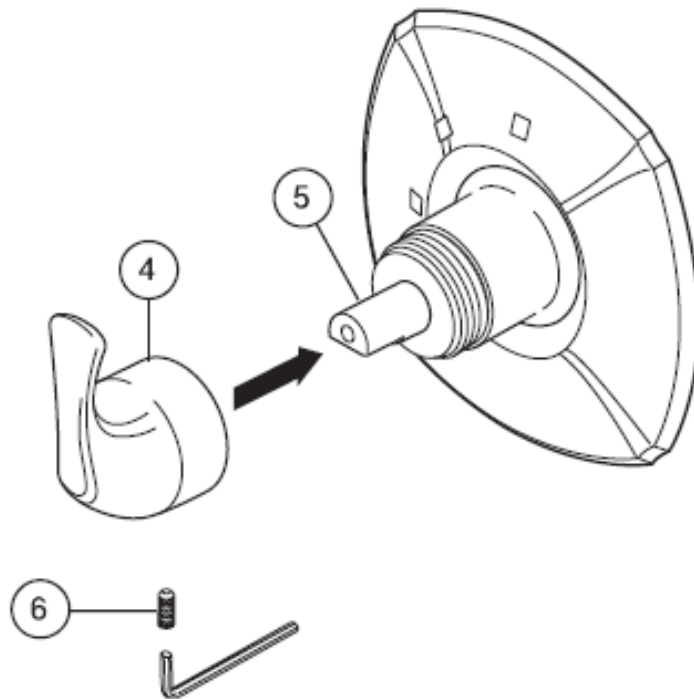
**Note:** Right port (3) must be plugged if using a 3 function diverter cartridge. Slide threaded sleeve (4) over cartridge stem aligning tabs on sleeve with slots in body (2) and tighten securely with bonnet (5).

# 2

## A.

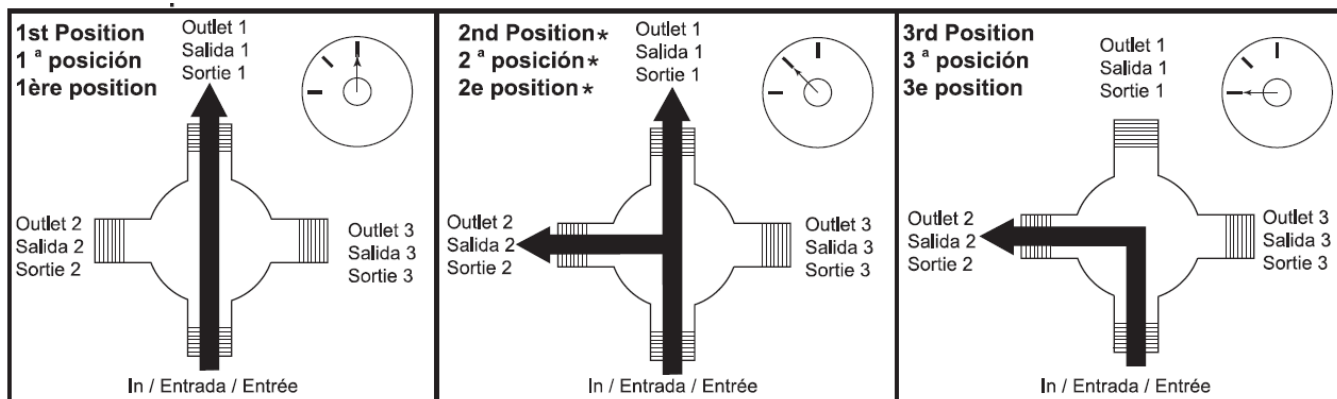


## B.



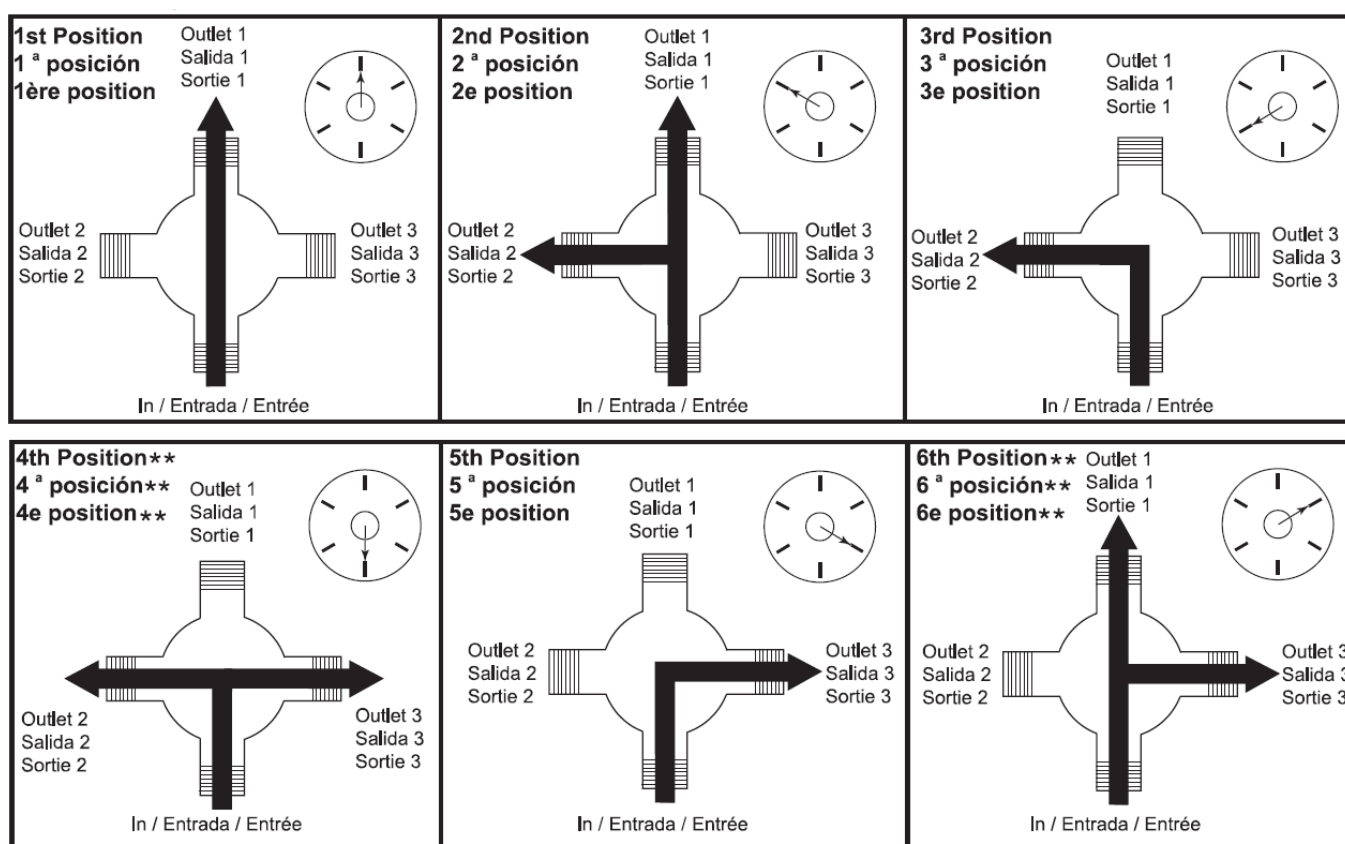
- **A** Place escutcheon (1) over diverter. Thread trim sleeve (3) onto threaded sleeve (2) until escutcheon and backplate are secure against wall. Do not overtighten.
- **B** Place handle (4) onto stem (5) and tighten set screw (6).

### Water Flow For 3 Function Diverter



Shared positions do not exist in non-shared cartridges.

## Water Flow For 6 Function Diverter



Shared positions do not exist in non-shared cartridges.

## CLEANING AND CARE

Care should be given to the cleaning of this product. Although its finish is extremely durable, it can be damaged by harsh abrasives or polish.

To clean, simply wipe gently with a damp cloth and blot dry with a soft towel.

## Documents / Resources



[DELTA T118 3 Port Three and Six Function Diverter Trim](#) [pdf] Instruction Manual  
T11837-BL, RP103588SS, 103739 Rev D, T118 3 Port Three and Six Function Diverter Trim, T  
118, 3 Port Three and Six Function Diverter Trim, Six Function Diverter Trim, Function Diverter T  
rim, Diverter Trim

References

- [User Manual](#)

[Manuals+](#), [Privacy Policy](#)

This website is an independent publication and is neither affiliated with nor endorsed by any of the trademark owners. The "Bluetooth®" word mark and logos are registered trademarks owned by Bluetooth SIG, Inc. The "Wi-Fi®" word mark and logos are registered trademarks owned by the Wi-Fi Alliance. Any use of these marks on this website does not imply any affiliation with or endorsement.