

## DELTA PI703M26000C Sub 1G and BLE Module User Guide

[Home](#) » [Delta](#) » DELTA PI703M26000C Sub 1G and BLE Module User Guide 



MyDeltaSolar DC1 and User Interface  
RPI703M260000-C  
Sub-1G & BLE Module



**Model Name: RPI703M260000-C**

### **Additional notes:**

(15.21) **Warning:** Changes or modifications to this unit not expressly approved by the party responsible for compliance could void the user authority to operate the equipment.

1. To comply with FCC RF exposure compliance requirements, a separation distance of at least 20 cm must be maintained between the antenna of this device and all persons.  
(Not including low power device (below 20mW))

2. This Transmitter must not be co-located or operating in conjunction with any other antenna or transmitter.

This equipment has been tested and found to comply with the limits for a Class B digital device, pursuant to Part 15 of the FCC Rules. These limits are designed to provide reasonable protection against harmful interference in a residential installation. This equipment generates, uses, and can radiate radio frequency energy and, if not installed and used in accordance with the instructions, may cause harmful interference to radio communications.

However, there is no guarantee that interference will not occur in a particular installation. If this equipment does cause harmful interference to radio or television reception, which can be determined by turning the equipment off and on, the user is encouraged to try to correct the interference by one or more of the following measures:

- ◆ Reorient or relocate the receiving antenna.
- ◆ Increase the separation between the equipment and receiver.
- ◆ Connect the equipment into an outlet on a circuit different from that to which the receiver is needed.
- ◆ Consult the dealer or an experienced radio/TV technician for help.

This device is intended only for OEM integrators under the following conditions:

- 1) The antenna must be installed such that 20 cm is maintained between the antenna and users. For laptop installations, the antenna must be installed to ensure that the proper spacing is maintained in the event the users place the device in their lap during use (i.e. positioning of antennas must be placed in the upper portion of the LCD panel only to ensure 20 cm will be maintained if the user places the device in their lap for use) and
- 2) The transmitter module may not be co-located with any other transmitter or antenna. As long as the 2 conditions above are met, further transmitter testing will not be required. However, the OEM integrator is still responsible for testing their end-product for any additional compliance requirements required with this module installed (for example, digital device emissions, PC peripheral requirements, etc.). **IMPORTANT NOTE:** In the event that these conditions can not be met (for example certain laptop configurations or co-location with another transmitter), then the FCC authorization is no longer considered valid and the FCC ID can not be used on the final product. In these circumstances, the OEM integrator will be responsible for re-evaluating the end product (including the transmitter) and obtaining a separate FCC authorization.

#### End Product Labeling

This transmitter module is authorized only for use in devices where the antenna may be installed such that 20 cm may be maintained between the antenna and users (for example access points, routers, wireless ASL modems, certain laptop configurations, and similar equipment). The final end product must be labeled in a visible area with the following: "Contains TX FCC ID: 2ARTO-RPI703M26000C  
Un-license band: This device complies with Part 15 of the FCC Rules.

Operation is subject to the following two conditions:

- (1) this device may not cause harmful interference, and
- (2) this device must accept any interference received, including interference that may cause undesired operation.

## Contents

- 1 [Download MyDeltaSolar APP |Download APP](#)
- 2 [User & Plant Register Of Cloud Create a new account](#)
- 3 [Cloud Register & Plant Register | User & Plant Register Of Cloud](#)
- 4 [Connect to DC1| Please turn on DC1](#)
- 5 [Change password |Connect to DC1 And Setting](#)
- 6 [Please select country and grid code, then go to home page | Connect to DC1 And Setting](#)
- 7 [Search Inverters and Set ID |Connect to DC1 And Setting](#)
- 8 [After the user choose an available Wi-Fi network, then pop-up the message |Connect to Cloud](#)
- 9 [Connect to MyDeltaSolar cloud |Connect to Cloud](#)
- 10 [Documents / Resources](#)
  - 10.1 [References](#)
- 11 [Related Posts](#)

## Download MyDeltaSolar APP |Download APP



**MyDeltaSolar**

1. This APP should collocate with the data collector and Delta Inverter.
2. If the inverter is not connected to the cloud, you still can monitor inverter operation by APP.

Where can search for the MyDeltaSolar APP?

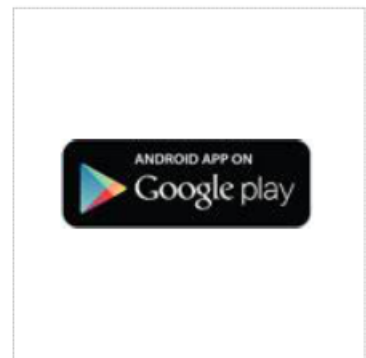
- QR Code: Please scan the QR code to DSC cloud (web).
- IOS system: Please search “MyDeltaSolar” in the App store.
- Android system: Please search “MyDeltaSolar” in Google Play.



QR Code



IOS



Android

<https://mydeltasolar.deltaww.com/index.php?p=manual>

<https://itunes.apple.com/ng/app/mydeltasolar/id1271609228?mt=8>

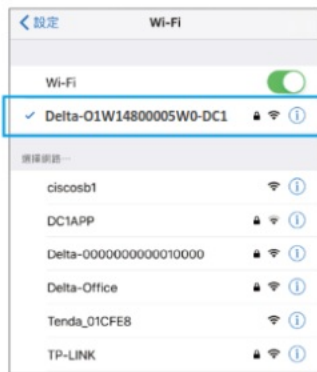
[https://play.google.com/store/apps/details?id=com.mydeltasolar\\_1\\_0\\_0.app&hl=zh-TW](https://play.google.com/store/apps/details?id=com.mydeltasolar_1_0_0.app&hl=zh-TW)

## User & Plant Register Of Cloud Create a new account





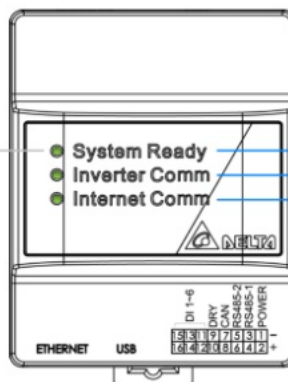
Choose SSID :  
Delta-serial number



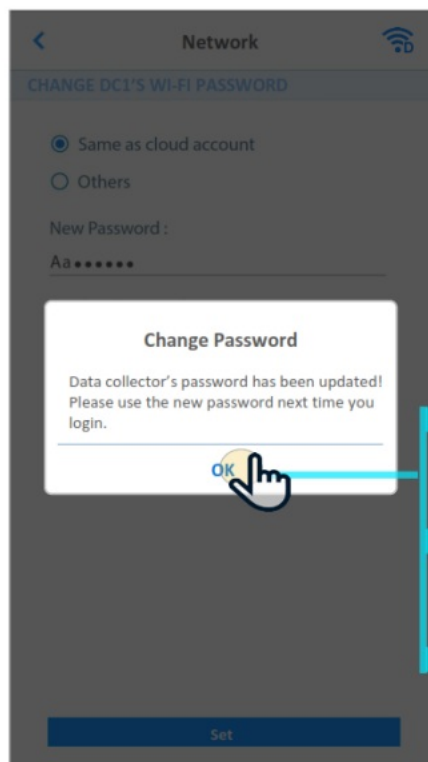
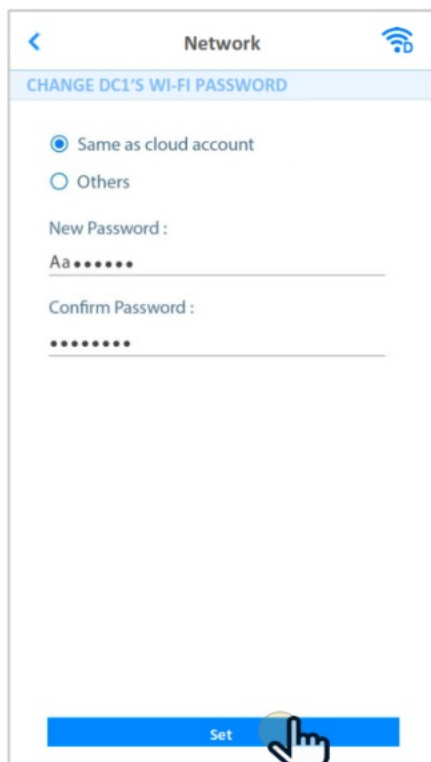
Enter default password :  
DELTASOL

## Wi-Fi Connection Procedure by APP

1. Turn on DC1.
2. Turn on Wi-Fi function of mobile device. (cell phone, tablet)
3. Search and choose DC1' SSID (Delta-serial number-DC1).
4. Enter the default password "DELTASOL" to get DC1 connected.
5. Open MyDeltaSolar APP.



## Change password | Connect to DC1 And Setting



### - CHANGE DC1'S PASSWORD :

1. Same as cloud account : The system enter user's password automatically.

2. Others : User can change password, and fill in "confirm password" to double confirm.

\*Change your password by using strong one what you don't use elsewhere immediately to protect your account.

### - Connection (page 8-12) :

If this data collector isn't set up yet, APP will direct to this page and start the following set up procedure.

### - Network (page 13) :

If user want this data collector uses delta cloud service, but it's network connection is not set up yet.

### - Cloud (page 14) :

If this data collector is completely set up, APP will direct to cloud page.

## Please select country and grid code, then go to home page | Connect to DC1 And Setting



Connection

☐ Auto ☐ RS485 ☐ Wi-Fi ☒ Sub-1G

Connection

☐ Auto ☐ RS485 ☐ Wi-Fi ☒ Sub-1G

DC1 SETTING SET INV GET INFO SYNC TIME

Grid Code : France

Frequency : 863.58 MHz

Quality : 100

If the quality value is not 100, there might be some devices are using this frequency band. Communication may be disturbed by these devices.

Block Setting

Block : Block 1

- Every Data collector in same plant should be set an unique Block ID carefully.

- Duplicated Block ID is not allowed.

#### - Search Button :

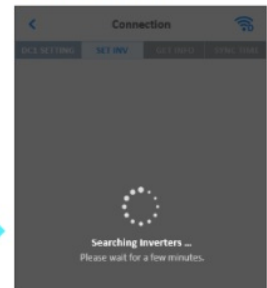
Select Sub-1G and click Search button to start DC1 setting process.

If this data collector isn't set up yet, APP will direct to this page and start the following set up procedure ( page 8-12 ).

**Grid Code** : Select specific grid codes for utility. Will be written into inverters.  
**Frequency** : Select the desired frequency to scan for quality.

1. Scan one frequency is 10 s.
2. Quality = 100 is OK to use.  
Quality < 100 has been used.
3. Sort : Good (top) → Bad (bottom)

#### - Searching Inverter :



## Search Inverters and Set ID |Connect to DC1 And Setting

Connection

DC1 SETTING SET INV GET INFO SYNC TIME

	Serial Number	ID	SNR	RSSI
<input type="checkbox"/>	DE000000000801	1 ▼	7	-72
<input type="checkbox"/>	DE000000000802	1 ▼	6	-76
<input type="checkbox"/>	DE000000000803	1 ▼	7	-79
<input type="checkbox"/>	DE000000000804	1 ▼	5	-82
<input type="checkbox"/>	DE000000000805	1 ▼	3	-86
<input type="checkbox"/>	DE000000000806	1 ▼	4	-89
<input type="checkbox"/>	DE000000000807	1 ▼	5	-92
<input type="checkbox"/>	DE000000000808	1 ▼	2	-93
<input type="checkbox"/>	DE000000000809	1 ▼	-1	-96
<input type="checkbox"/>	DE000000000810	1 ▼	1	-99
<input type="checkbox"/>	DE000000000811	1 ▼	0	-101
<input type="checkbox"/>	DE000000000812	1 ▼	-1	-103

Connection

DC1 SETTING SET INV GET INFO SYNC TIME

☒ Select All

	Serial Number	ID	SNR	RSSI
<input checked="" type="checkbox"/>	DE000000000801	1 ▼	7	-72
<input checked="" type="checkbox"/>	DE000000000802	1 ▼	6	-76
<input checked="" type="checkbox"/>	DE000000000803	1 ▼	7	-79
<input checked="" type="checkbox"/>	DE000000000804	1 ▼	5	-82
<input checked="" type="checkbox"/>	DE000000000805	1 ▼	3	-86
<input checked="" type="checkbox"/>	DE000000000806	1 ▼	4	-89
<input checked="" type="checkbox"/>	DE000000000807	1 ▼	5	-92
<input checked="" type="checkbox"/>	DE000000000808	1 ▼	2	-93
<input checked="" type="checkbox"/>	DE000000000809	1 ▼	-1	-96
<input checked="" type="checkbox"/>	DE000000000810	1 ▼	1	-99
<input checked="" type="checkbox"/>	DE000000000811	1 ▼	0	-101
<input checked="" type="checkbox"/>	DE000000000812	1 ▼	-1	-103

#### - Select All :

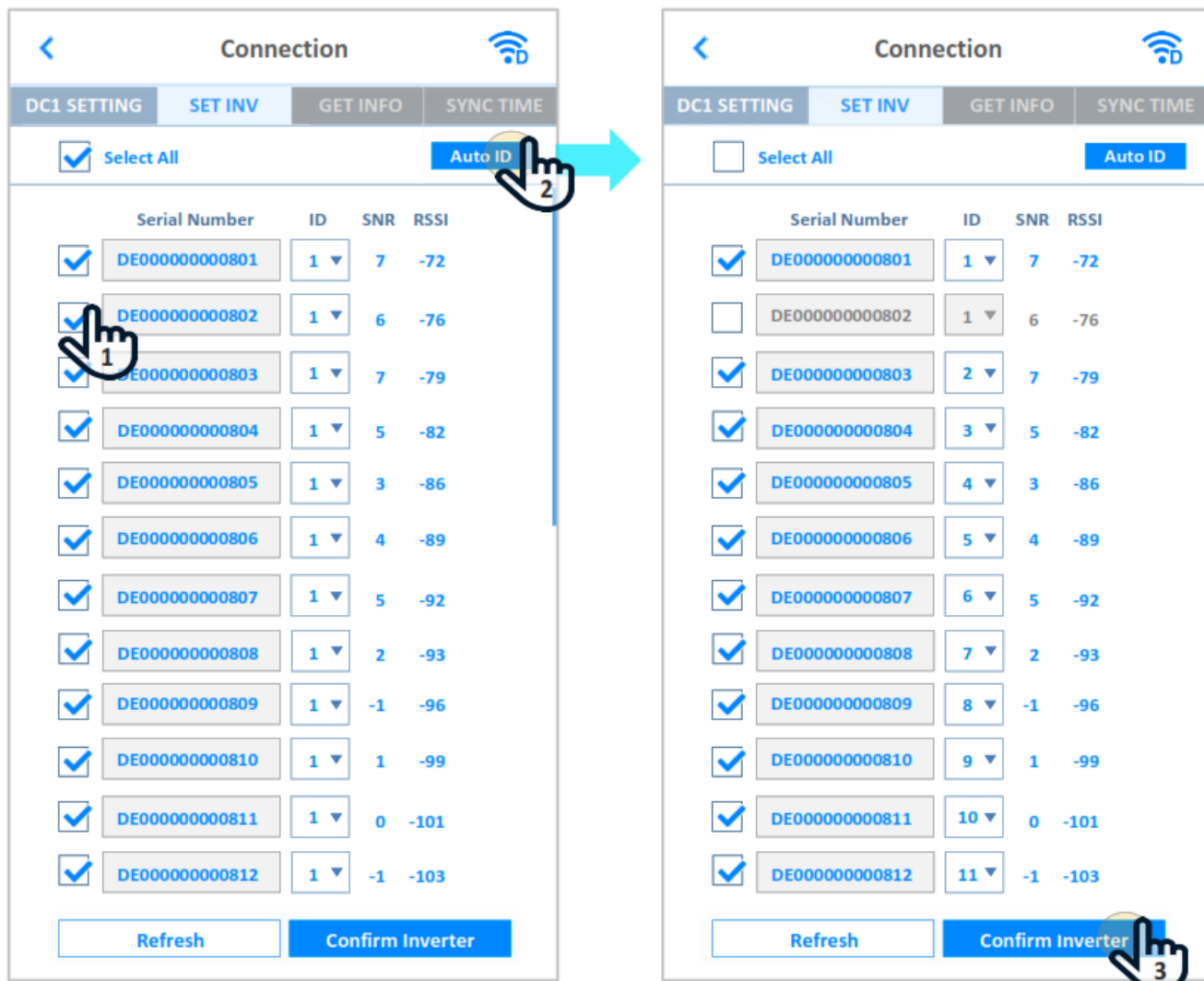
This button will select all inverters.

When there are more than 25 inverters, the topmost 25 inverters will be **selected**.

– **RSSI :**

Indicate the signal quality of every inverter. The larger is better.

\* The search result will be sorted by RSSI, the most recommended inverters will be on the top of the list.

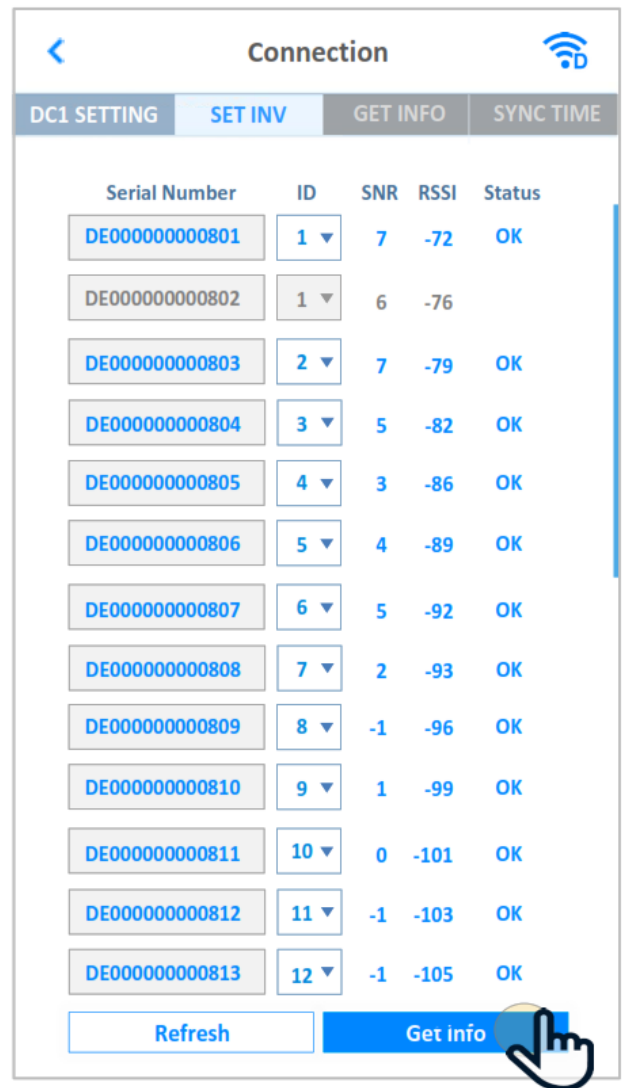
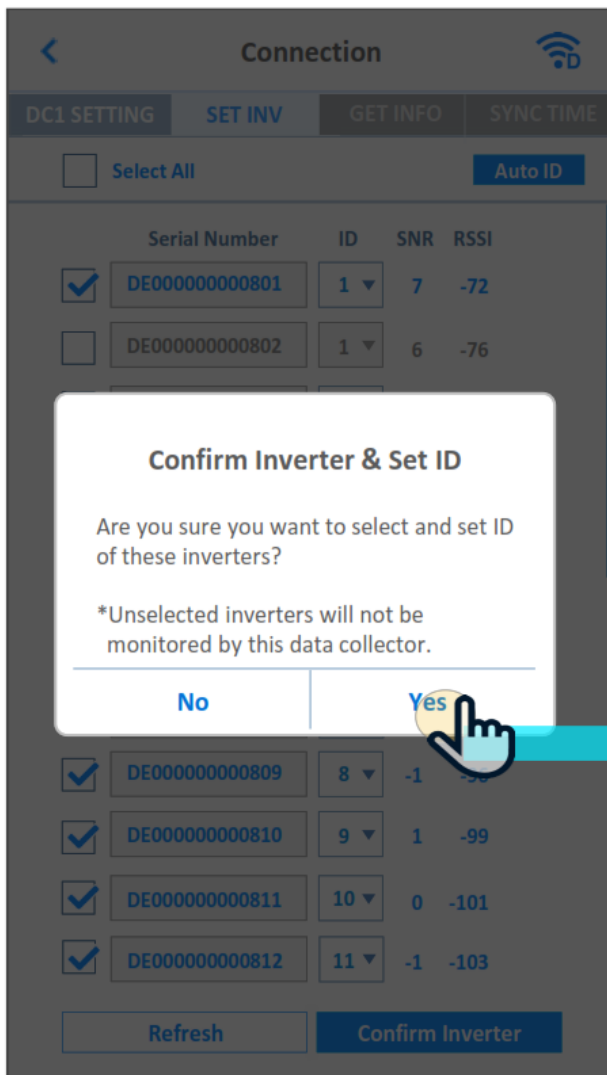


– **Auto ID :**

This button will automatically assign a unique ID to every inverter which is selected.

– **Confirm Inverter:**

Users cannot select more than 25 inverters, and duplicated ID is not allowed.



#### – Status :

OK: Set inverter ID success.

Fail: Set inverter ID fails, need a refresh.

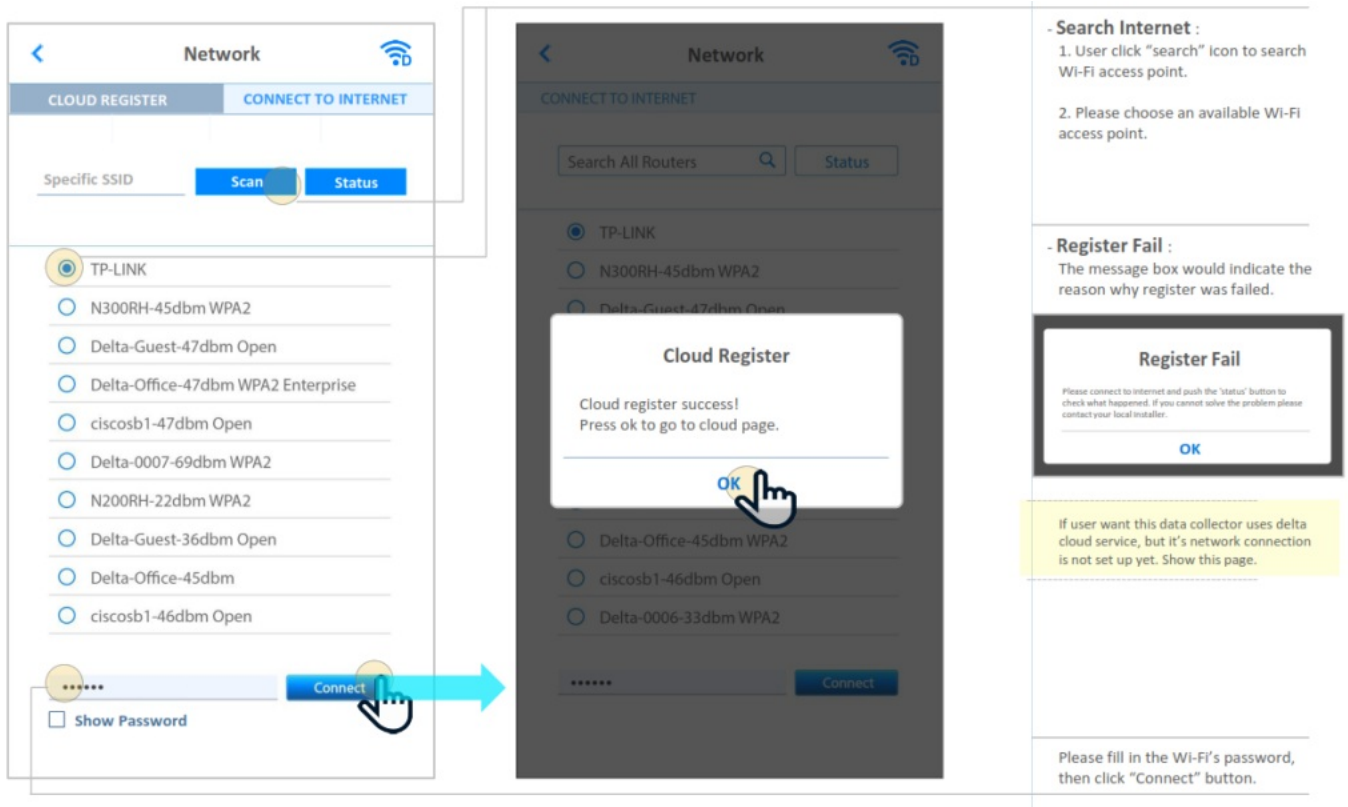
#### – Get Info

All selected inverters need to be set ID successfully.





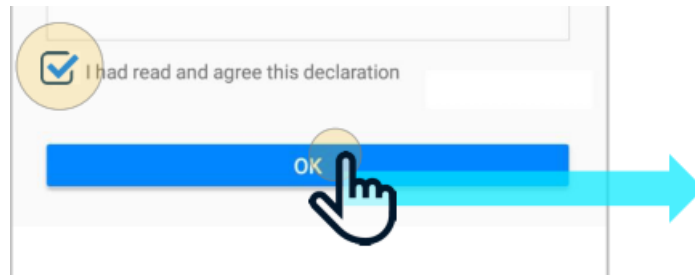
After the user choose an available Wi-Fi network, then pop-up the message [Connect to Cloud

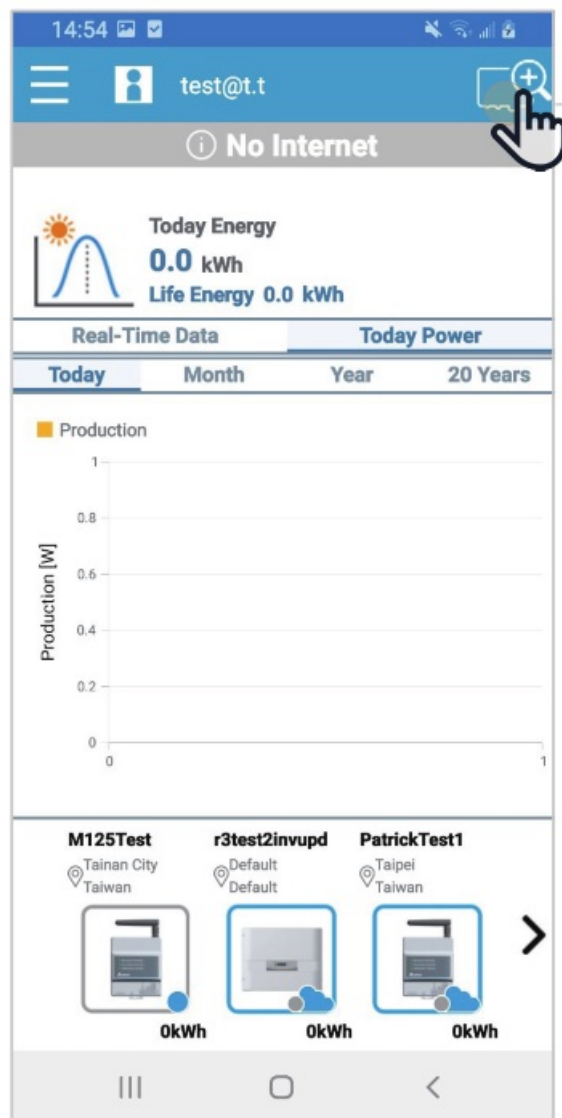


## Connect to MyDeltaSolar cloud |Connect to Cloud

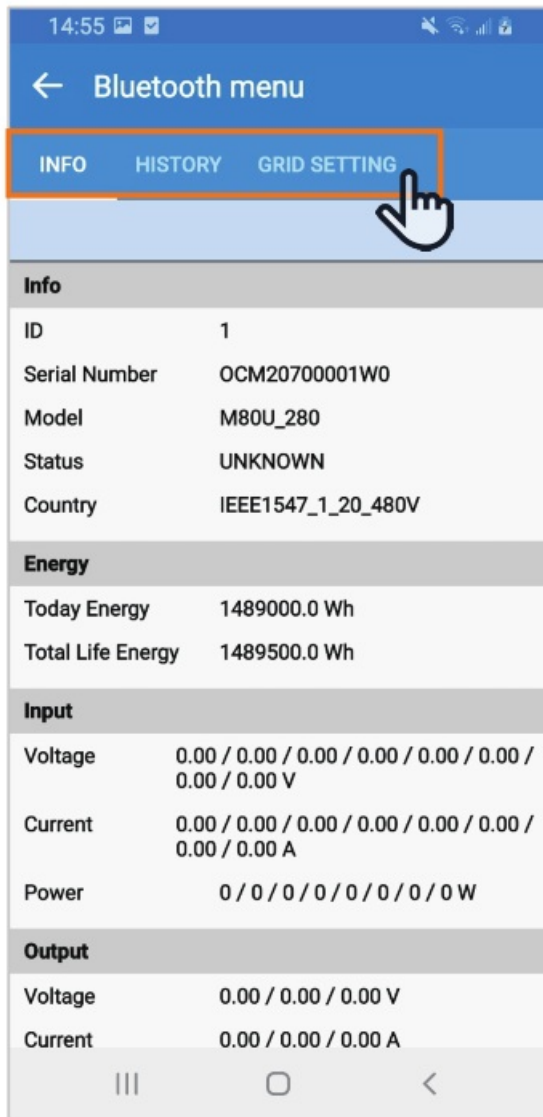
### Use MyDeltaSolar Service terms and conditions :

You must need a MyDeltaSolar account in order to use our cloud services. Delta may collect your personal data and protect your privacy when you use the MyDeltaSolar service. By using the MyDeltaSolar service, you agree that Delta can use such data and monitor your inverter's status if necessary. In some cases, Delta employees, authorized contractors, or agents may need to use your account to analyze any issue and problem you have while using Delta solar inverter or service. We restrict access to personal information to Delta employees, contractors, and agents who need to know that information in order to process it for us, and who are subject to strict contractual confidentiality obligations and may be disciplined or terminated if they fail to meet these obligations.





SSID



INFO

16:41	
Bluetooth menu	
INFO HISTORY GRID SETTING	
Info	
ID	1
Serial Number	OCM20700001W0
Model	M80U_280
Status	ON GRID
Country	IEEE1547_1_20_480V
Energy	
Today Energy	1490000.0 Wh
Total Life Energy	1490200.0 Wh
Input	
Voltage	457.80 / 456.50 / 457.50 / 457.00 / 699.00 / 701.30 / 698.60 / 674.60 V
Current	0.50 / 2.21 / 0.93 / 0.63 / 0.55 / 0.59 / 0.47 / 0.59 A
Power	230 / 1010 / 430 / 290 / 390 / 420 / 330 / 400 W
Output	
Voltage	278.20 / 279.50 / 276.90 V

Output	
Voltage	277.70 / 277.00 / 273.80 V
Current	4.43 / 4.07 / 3.99 A
Power	760 / 610 / 740 W
FW Version	
COMM	89.02
DSP	01.14
RED	01.04
ARC	01.03
SMC	—
SBMS	—
WIFI	0.0.0

## HISTORY

16:25	
Bluetooth menu	
INFO HISTORY GRID SETTING	
ITEM: Event Log	
START DATE:	2021/7/23
END DATE:	2021/9/23
Event Log	
Time	Event
2021/7/23 上午 11:13:55	E09 - No Grid
2021/7/23 上午 11:21:46	E09 - No Grid
2021/7/23 下午 01:32:27	E09 - No Grid
2021/7/23 下午 02:20:07	F27 - RCMU Fault
2021/7/23 下午 04:37:07	E11 - AC Volt High
2021/7/23 下午 05:10:51	E10 - AC Volt Low
2021/7/23 下午 05:23:17	E09 - No Grid

16:25	
Bluetooth menu	
INFO HISTORY GRID SETTING	
2021/9/2 下午 04:56:57	E10 - AC Volt Low
2021/9/2 下午 05:19:23	E09 - No Grid
2021/9/7 上午 11:14:24	E10 - AC Volt Low
2021/9/7 上午 11:14:34	E09 - No Grid
2021/9/8 下午 02:25:44	E09 - No Grid
2021/9/8 下午 02:29:37	E09 - No Grid
2021/9/8 下午 02:30:32	E10 - AC Volt Low
2021/9/8 下午 02:30:47	E02 - AC Freq Low
2021/9/8 下午 04:34:14	E09 - No Grid
2021/9/8 下午 08:19:17	E09 - No Grid
2021/9/14 下午 01:26:56	E01 - AC Freq High
2021/9/14 下午 01:36:24	E10 - AC Volt Low
2021/9/14 下午 01:41:04	E10 - AC Volt Low
2021/9/14 下午 01:49:08	E10 - AC Volt Low

2021/9/14 下午 01:50:59	E09 - No Grid
2021/9/16 上午 10:54:19	E01 - AC Freq High
2021/9/16 上午 11:07:18	E09 - No Grid
2021/9/16 下午 12:54:05	F27 - RCMU Fault
2021/9/16 下午 01:00:58	E09 - No Grid
2021/9/16 下午 04:39:08	E09 - No Grid
2021/9/23 下午 02:59:56	E25 - EPO
2021/9/23 下午 04:10:19	E09 - No Grid
2021/9/23 下午 04:16:57	F58 - Arc Circuit Fault

## GRID SETTING

14:57

Bluetooth menu

INFO

HISTORY

GRID SETTING

Select Inverter ID:

1

Selected inverter model:

M80U\_280

Installation Settings

Country

0xBC21

IEEE1547\_1\_20\_480V

SET

SAME MODEL SET

Insulation Mode

ON

Insulation Resistance

150

kΩ

RCMU

0xBC74

OFF

EPO 1 (External power off)

Normal Open

AC connection

3P3W

Relay 1 (dry contacts)

Fault

III

O

<

14:57

Bluetooth menu

INFO

HISTORY

GRID SETTING

Insulation Mode

ON

Insulation Resistance

150

kΩ

RCMU

OFF

EPO 1 (External power off)

Normal Open

AC connection

3P3W

Relay 1 (dry contacts)

Fault

Anti-islanding (EU)

OFF

Maximum Power

100000

W

Ground Current Amp

0.3

A

Ground Current Time

0.3

s

SET

SAME MODEL SET

III

O

<

Smarter. Greener. Together.



To learn more about Delta, please visit [www.deltaww.com](http://www.deltaww.com).

## Documents / Resources

	<b><a href="#">DELTA PI703M26000C Sub 1G and BLE Module</a></b> [pdf] User Guide RPI703M26000C, 2ARTO-RPI703M26000C, 2ARTORPI703M26000C, PI703M26000C Sub 1G BLE module, Sub 1G BLE module, BLE module, module
--	---

## References

- [Welcome to Delta](#)