




DELTA IFD6500, IFD6530 USB/RS-485 Communication Interface Instruction Manual

[Home](#) » [Delta](#) » DELTA IFD6500, IFD6530 USB/RS-485 Communication Interface Instruction Manual 

Contents

- [1 DELTA IFD6500, IFD6530 USB/RS-485 Communication Interface](#)
- [2 Introduction](#)
 - [2.1 Application & Dimension](#)
- [3 Specifications](#)
- [4 Preparations before Driver Installation](#)
- [5 Driver Installation](#)
- [6 LED Display](#)
- [7 Documents / Resources](#)
 - [7.1 References](#)
- [8 Related Posts](#)

DELTA

DELTA IFD6500, IFD6530 USB/RS-485 Communication Interface

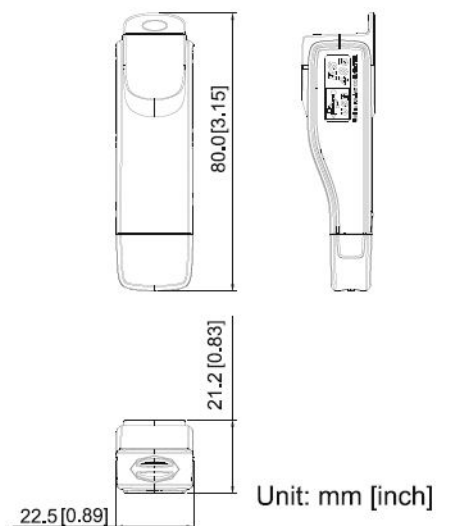
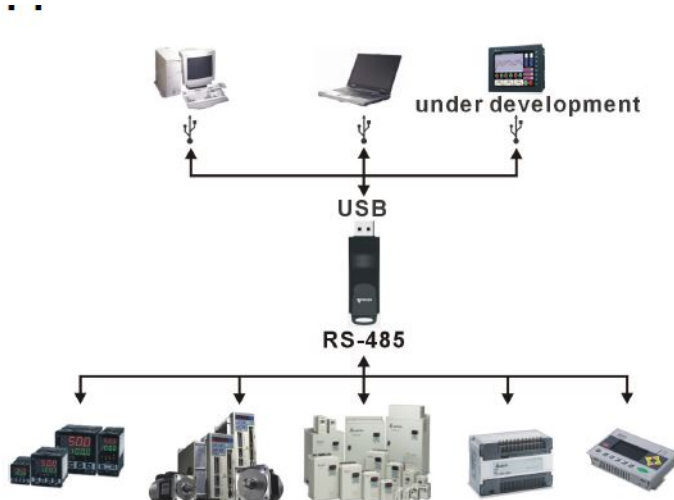


Introduction

IFD6500/IFD6530 is a convenient RS-485-to-USB converter, which does not require external power-supply or complex setting process. It supports baud rate from 75 to 115.2kbps and auto switching direction of data transmission. In addition, it adopts RJ-45 in RS-485 connector for users to wire conveniently. And its tiny dimension, handy use of plug-and-play and hot-swap provide more conveniences for connecting all DELTA IABU products to your PC. Applicable Models: All DELTA IABU products.

- Please thoroughly read this instruction sheet before installation and putting it into use.
- The content of this instruction sheet and the driver file may be revised without prior notice. Please consult our distributors or download the most updated instruction/driver version at <http://www.deltaww.com>


Application & Dimension



Specifications

- Power supply
 - No external power is needed
- Power consumption
 - IFD6500: 0.4W IFD6530: 1.5W
- Isolated voltage
 - 2,500VDC
- Baud rate
 - 75, 150, 300, 600, 1,200, 2,400, 4,800, 9,600, 19,200, 38,400, 57,600, 115,200 bps
- RS-485 connector
 - RJ-45
- USB connector
 - A type (plug)
- Compatibility
 - Full compliance with USB V2.0 specification
- Max. cable length
 - RS-485 Communication Port: 100 m
- Support RS-485 half-duplex transmission

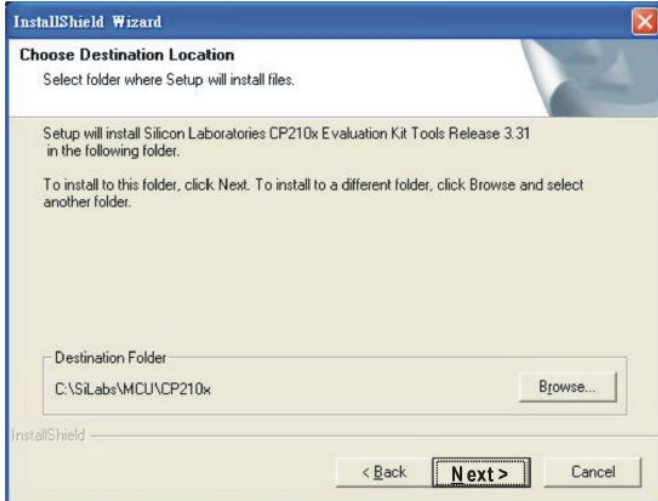
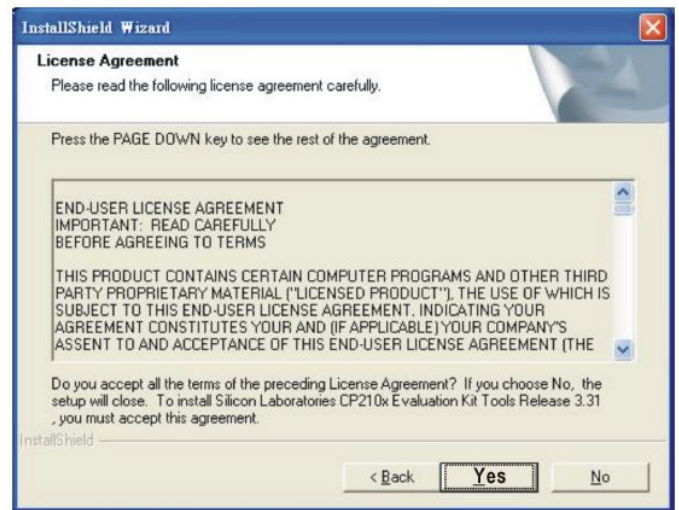
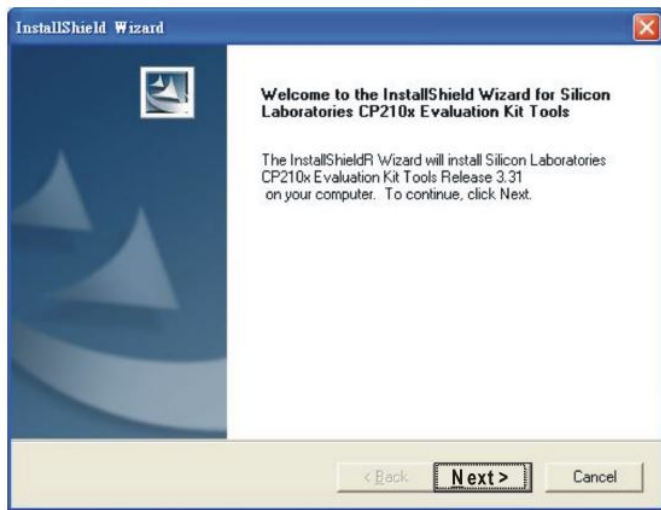
RJ-45

	IFD6500		IFD6530	
	PIN	Description	PIN	Description
	1	Reserved	1	Reserved
	2	Reserved	2	Reserved
	3	Reserved	3	GND
	4	SG+	4	SG-
	5	SG-	5	SG+
	6	Reserved	6	GND
	7	Reserved	7	Reserved
	8	Reserved	8	+9V

Preparations before Driver Installation

Download the USB driver from our official website

(<https://downloadcenter.deltaww.com/en-US/DownloadCenter>) and follow the steps below to extract it. **Note:** DO NOT connect IFD6500/IFD6530 to PC before extracting the driver file.



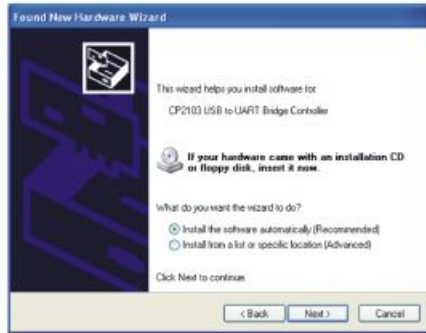
You should have a folder marked SiLabs under drive C.

Driver Installation

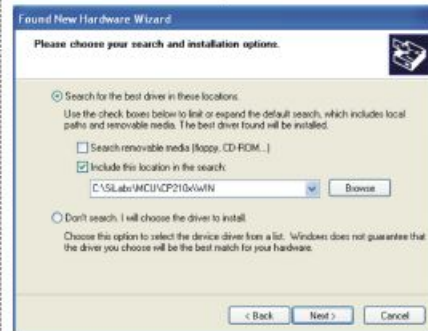
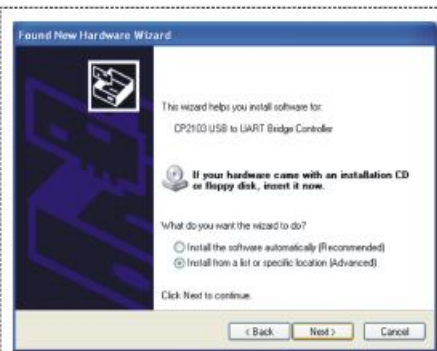
After connecting IFD6500/IFD6530 to PC, please install driver by following steps.



STEP 2

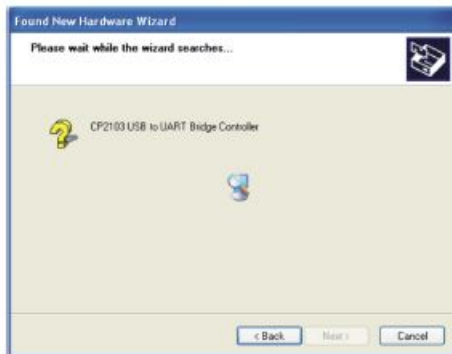


OR



Browse and select directory, or enter
C:\SiLabs\MCU\CP210x\WIN

STEP 3



STEP 4



STEP 5

Repeat Step 1 to Step 4 to complete COM PORT setting.

LED Display

1. Steady Green LED ON: power is ON.
2. Blinking orange LED: data is transmitting.

- IFD6500/IFD6530 is an OPEN-TYPE device. It should be installed in a control cabinet free of airborne dust, humidity, electric shock and vibration. To prevent non-maintenance staff from operating IFD6500/IFD6530, or to prevent an accident from damaging IFD6500/IFD6530, the control cabinet in which IFD6500/IFD6530 is installed should be equipped with a safeguard. For example, the control cabinet in which IFD6500/IFD6530 is installed can be unlocked with a special tool or key.
- DO NOT connect AC power to any of I/O terminals, otherwise serious damage may occur. Please check all wiring again before IFD6500/IFD6530 is powered up. After IFD6500/IFD6530 is disconnected, Do NOT touch



any terminals in a minute. Make sure that the ground terminal on IFD6500/IFD6530 is correctly grounded in order to prevent electromagnetic interference.

Documents / Resources

<div><div>IFD6500 IFD6530</div><div>Instruction Sheet 安全說明書 安全說明書 安全說明書 安全說明書</div><div></div></div>	<p>DELTA IFD6500, IFD6530 USB/RS-485 Communication Interface [pdf] Instruction Manual IFD6500, IFD6530, USB RS-485 Communication Interface, IFD6500 IFD6530 USB RS-485 Co mmunication Interface, IFD6500, IFD6530, USB Communication Interface, RS-485 Communica tion Interface, Communication Interface</p>
---	--

References

- [Welcome to Delta](#)
- [-](#)
- [Delta | Download Center](#)
- [Delta | Download Center](#)