


**DELTA 17
Series
MultiChoice
Valve Trim**



DELTA 17 Series MultiChoice Valve Trim Owner's Manual

[Home](#) » [Delta](#) » DELTA 17 Series MultiChoice Valve Trim Owner's Manual 

Contents

- [1 DELTA 17 Series MultiChoice Valve Trim](#)
- [2 Product Information](#)
- [3 Product Usage Instructions](#)
- [4 MultiChoice® Rough-In Installation \(When your product requires\)](#)
- [5 Cartridge Installation](#)
- [6 Shower Head and Tub Spout Installation](#)
- [7 Trim Installation](#)
- [8 Clean and Care](#)
- [9 Maintenance](#)
- [10 Documents / Resources](#)
 - [10.1 References](#)
- [11 Related Posts](#)



DELTA 17 Series MultiChoice Valve Trim



Product Information

Specifications:

- Model Number: 107529
- Series: 17 Series
- Installation Type: Wall Mount
- Material: Copper, Iron, Pex
- Recommended Pipe Size: 1/2 inch (13 mm)

Product Usage Instructions

Installation Instructions:

Mounting the Valve Body:

1. Shut off water supplies.
2. Consider the type and thickness of your finished wall. Mount the body using the two stringer mounting holes on the bracket. Ensure the word "UP" is on top of the valve body during installation.

Distance Measurement:

1. Measure the distance from the stringer to the front of the platerguard.
2. Ensure proper placement of the platerguard based on wall thickness.

Connecting Water Supplies:

1. Connect the valve body to water supplies using appropriate fittings for your pipe type (copper tubing, iron pipe,

orPex).

2. Seal any unused outlet ports with a pipe plug.

Bonnet Removal:

1. Remove the bonnet and ensure stops are removed before soldering.

Connecting Outlets:

1. Connect top outlet to shower pipe and bottom outlet to tub spout pipe using proper fittings.
2. Ensure the pipe between the valve body and tub spout meets specified dimensions.

Cartridge Installation:

Preparing for Installation:

1. Turn off water supplies and remove bonnet nut and test cap from the body.
2. If not a thin wall mounting, remove the entire plasterguard.

Inserting Adapter Assembly:

1. Insert adapter assembly into the valve body ensuring correct positioning and secure pressing.
2. Remove the retainer from the adapter.

Installing Cartridge:

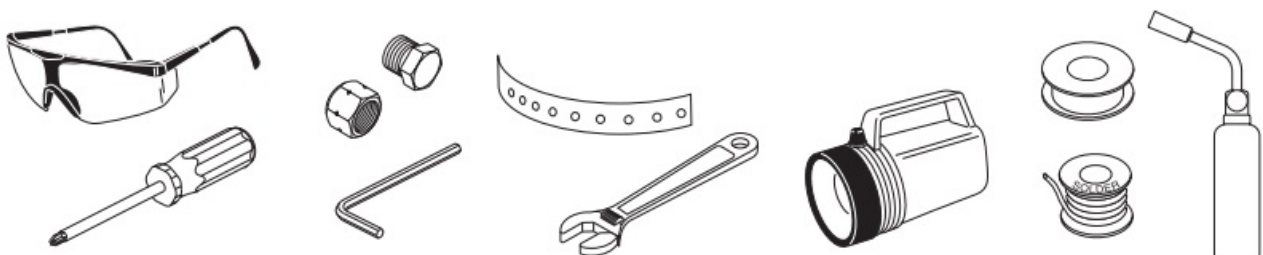
1. Rotate the cartridge to align "HOT SIDE" on the left and insert it into the valve body.
2. Ensure proper engagement of the key on the cartridge with the slot in the brass body and hand tighten securely with the bonnet nut.

FAQ (Frequently Asked Questions)

• Q: Where can I find additional replacement parts?

A: For additional replacement parts, visit www.deltafaucet.com/service-parts

You May Need



For additional replacement parts, visit www.deltafaucet.com/service-parts

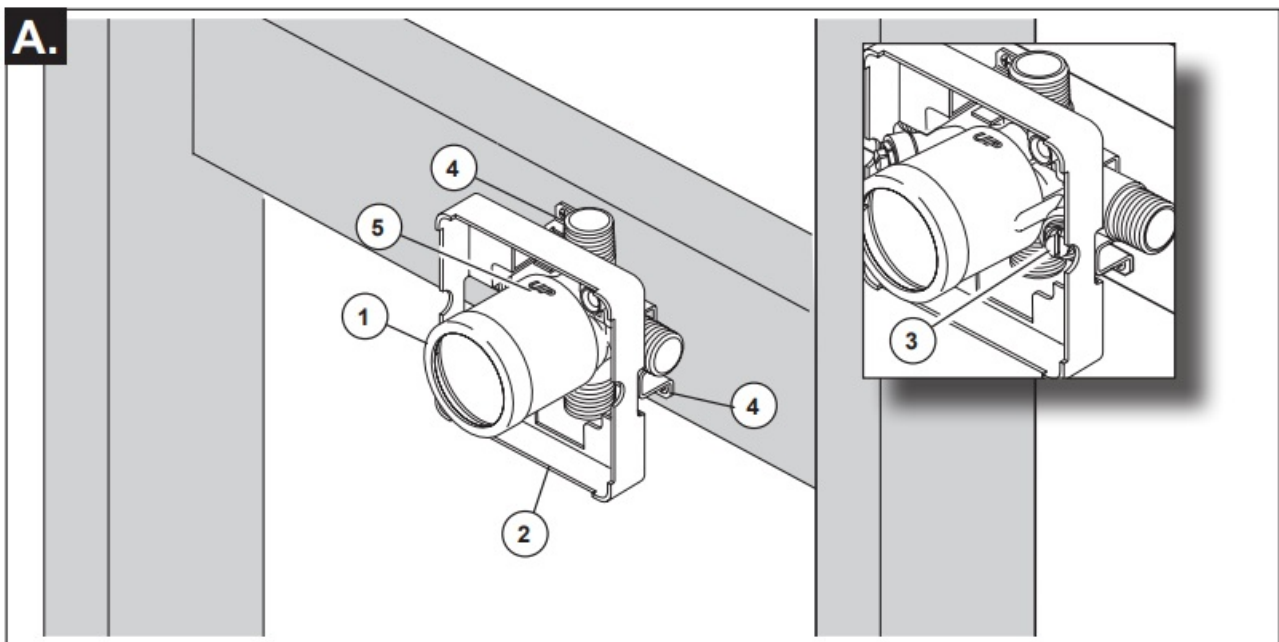
THIS VALVE MEETS OR EXCEEDS THE FOLLOWING STANDARDS: ASME A112.18.1/CSA B125.1 and ASSE 1016 (Type -P- or -T-). CAUTION: This system/device must be set by the installer to ensure safe, maximum temperature. Any change in the setting may raise the discharge temperature above the limit considered safe and may lead to hot water burns.

NOTICE TO INSTALLER: CAUTION!—As the installer of this valve, it is your responsibility to properly INSTALL and ADJUST this valve per the instructions given. This valve does not automatically adjust for inlet temperature changes, therefore, someone must make the necessary Rotational Limit Stop adjustments at the time of installation and further adjustments may be necessary due to seasonal water temperature change. YOU MUST inform the owner/user of this requirement by following the instructions. If you or the owner/user are unsure how to properly make these adjustments please refer to page 7 and if still uncertain, call us at 1-800-345-DELTA. After installation and adjustment, you must affix your name, company name and the date you adjusted the Rotational Limit Stop to the caution label provided and apply or attach the label to the back side of the closest cabinet door and the warning label to the water heater. Leave this Instruction Sheet for the owner's/user's reference.

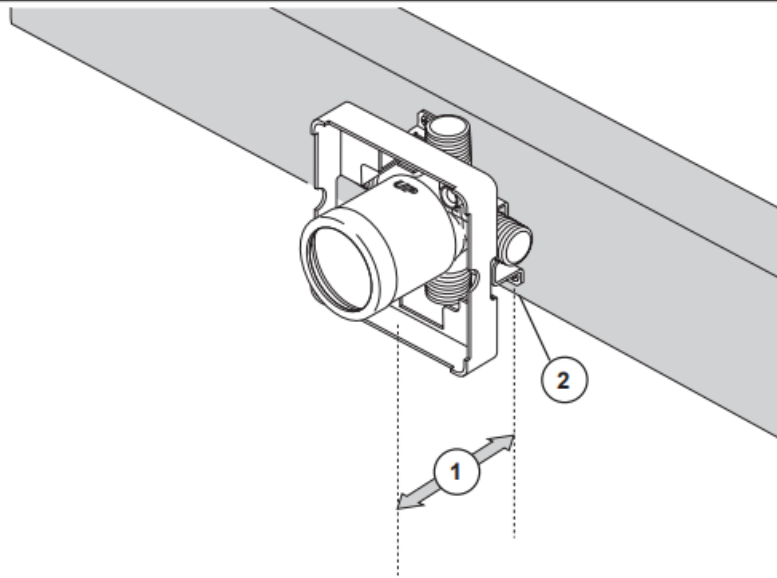
WARNING: This pressure balanced or thermostatic bath valve is designed to minimize the effects of outlet water temperature changes due to inlet pressure changes, commonly caused by dishwashers, washing machines, toilets and the like. It may not provide protection from hot water burns when there is a failure of other temperature controlling devices elsewhere in the plumbing system, if the rotational limit stop is not properly set or if the hot water temperature is changed after the settings are made or if the water inlet changes due to seasonal changes.

WARNING: Do not install a shut-off device on either outlet of this valve. When this type of device shuts off the water flow, it can defeat the ability of the valve to balance the hot and cold water pressures.

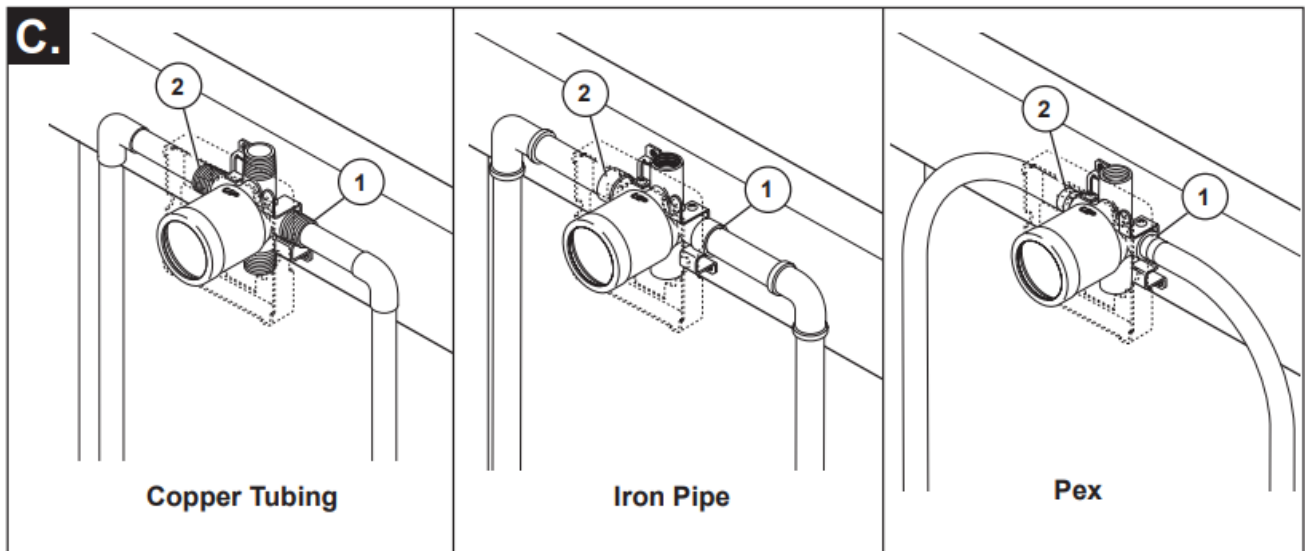
MultiChoice® Rough-In Installation (When your product requires)



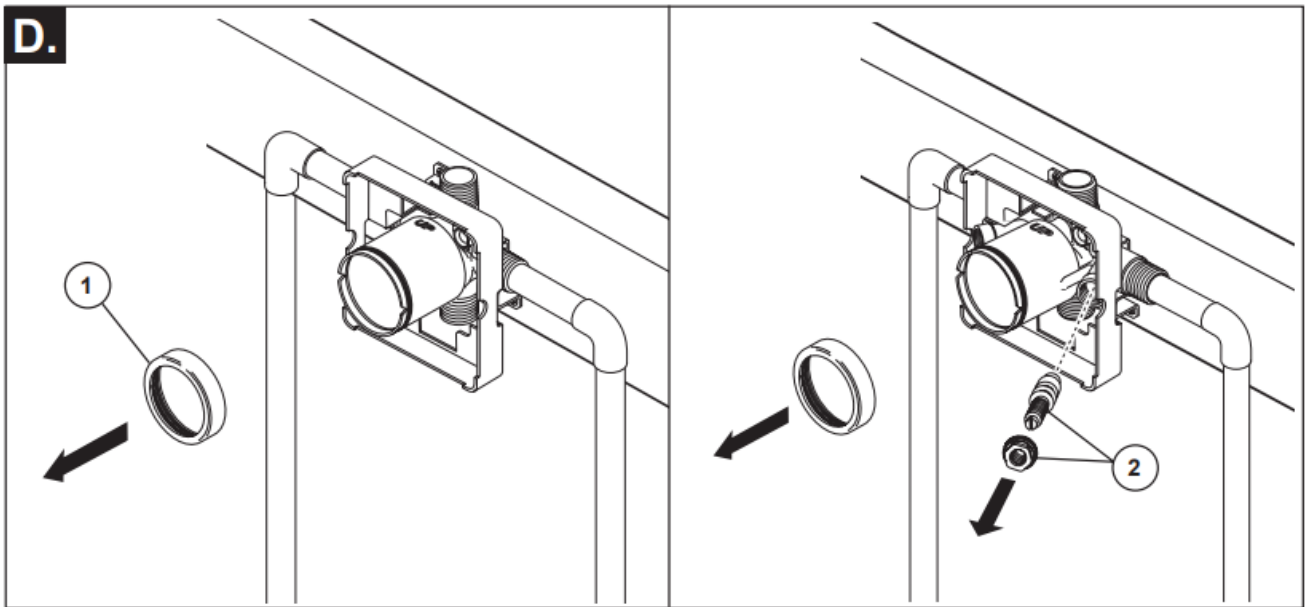
- **SHUT OFF WATER SUPPLIES.** Consider the type and thickness of your finished wall before placing your stringer back plate. Install the body (1) so the surface of the finished wall is flush with the front of the plasterguard (2) $\pm 3/8"$. Note: For models with stops (3), plasterguard must be flush or subflush $3/8"$ to finished wall. Mount body using the two stringer mounting holes (4) on the bracket. Make sure the word "UP" (5) is on top of the valve body when installing.

B.

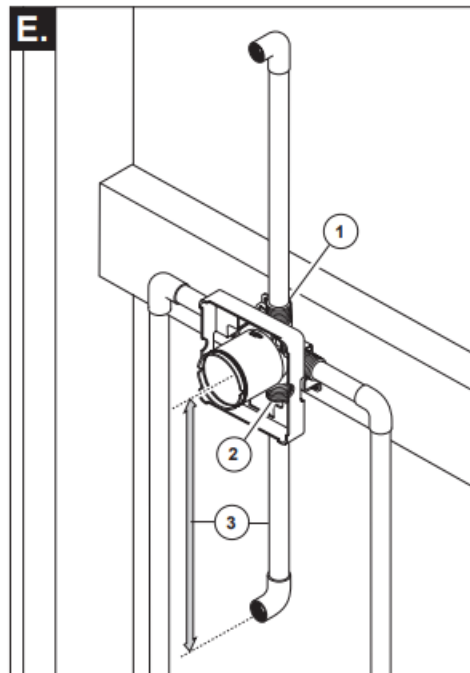
- Distance (1) from the stringer (2) to the front of the plasterguard is 2.8" (71 mm).
- If a thin wall is used, be sure to have the plasterguard behind the wall, otherwise the wall should always be flush with the front of the plasterguard. See instruction on the bag for thin wall mounting.

C.

- Connect valve body to water supplies using the proper fittings for your valve body type (copper tubing, iron pipe or Pex). Note: (1) is the cold inlet port and (2) is the hot inlet port. If either of the two outlet ports is to be unused, seal the port with a pipe plug.
- If you are making a back to back or reverse installation (hot on right and cold on left) install the valve body as described, but the water supply lines will be reversed. Note: (1) is the hot inlet port and (2) is the cold inlet port.

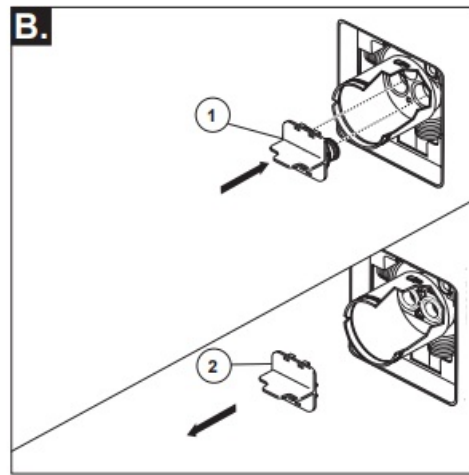
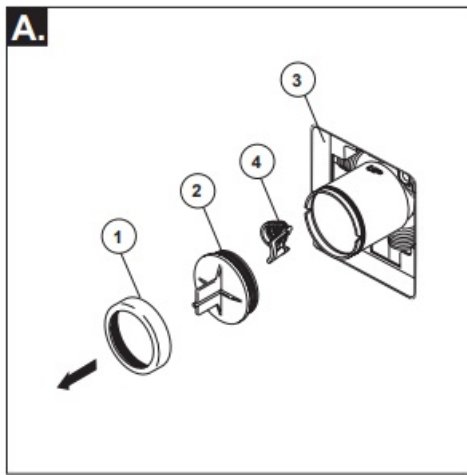


- Remove bonnet (1). Warning: Avoid soldering at high temperatures.
- Be sure stops (2) are removed from the w/stops version before soldering. (Do not install stops before soldering.)

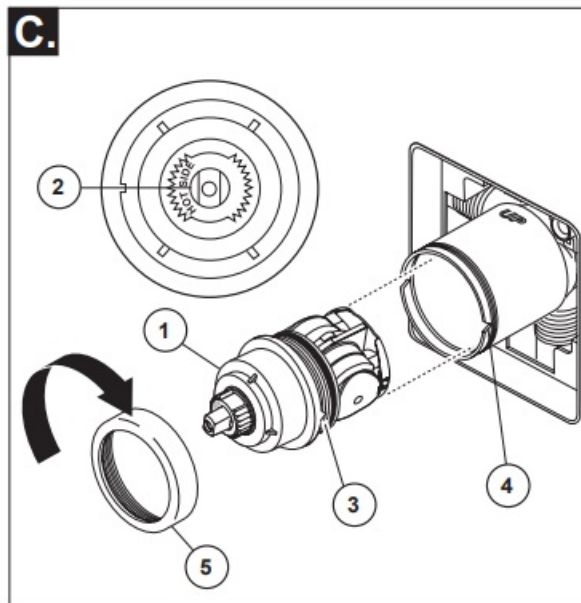


- Connect top outlet (1) to shower pipe with proper fittings. Connect bottom outlet (2) to tub spout pipe with proper fittings. Pipe (3) between valve body and tub spout must be a minimum of 1/2" (13 mm) copper pipe or 1/2" (13 mm) iron pipe in a straight drop no less than 8" (203 mm) but no more than 18" (457 mm) long with only one iron pipe or copper 90 degree elbow to the tub spout nipple. Do not use PEX tubing for tub spout drop.

Cartridge Installation

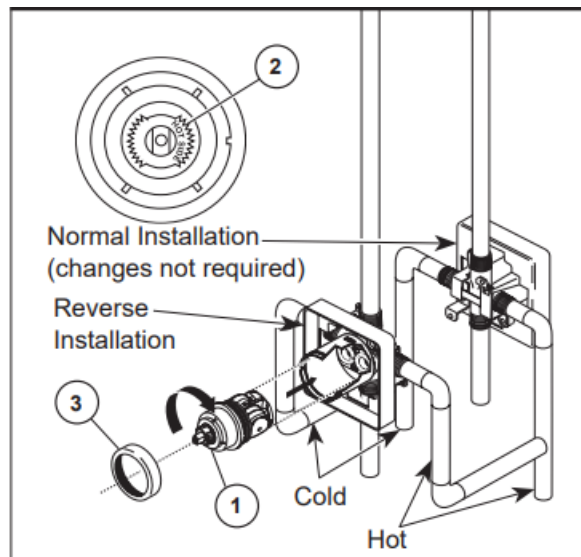


- Turn off water supplies. Remove bonnet nut (1) and test cap (2) from the body. If this is not a thin wall mounting, the entire plasterguard (3) may be removed. If screen (4) is in place, remove before installing cartridge.
- Insert adapter assembly (1) into valve body. Make sure the adapter assembly is correctly positioned and is pressed all the way down inside body. Remove the retainer (2) from the adapter.



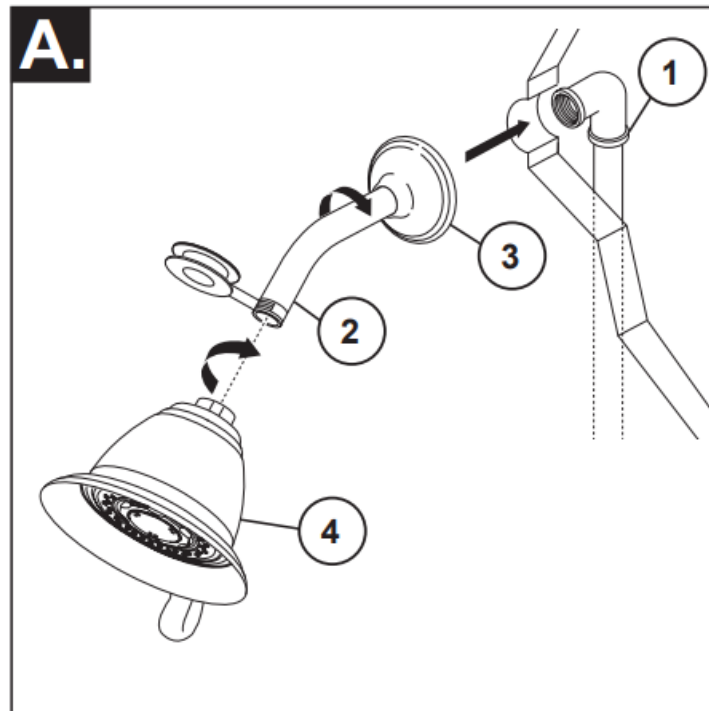
- Rotate cartridge (1) so the words “HOT SIDE” (2) appear on the left. Insert cartridge assembly into valve body. Make sure the key (3) on the cartridge is fully engaged with the slot in the brass body (4). Slide bonnet nut (5) over the cartridge and thread onto the body. Hand tighten securely.

Back to back Installation

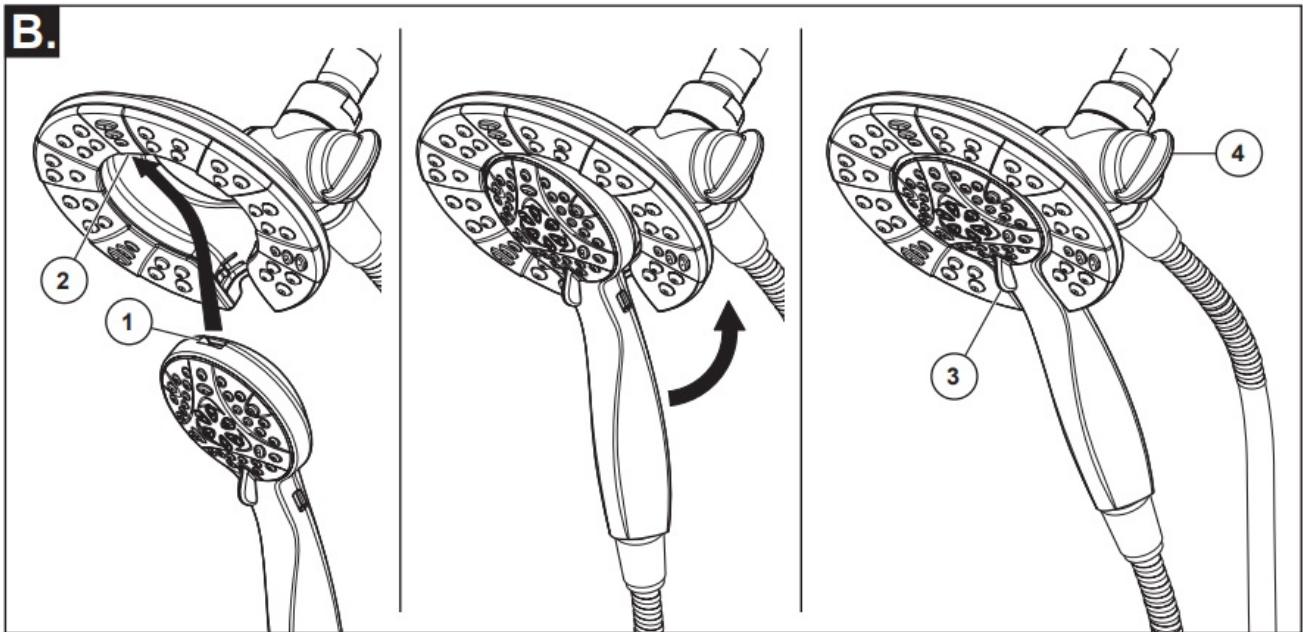


- For back to back or reverse installations (hot on right and cold on left): Rotate cartridge (1) so the words “HOT SIDE” (2) appear on the right. Install the cartridge making sure that the key is fully engaged with the slot in the brass body (See step C). Slide bonnet nut (3) over the cartridge and thread onto the body. Hand tighten securely.

Shower Head and Tub Spout Installation



- **FOR SHOWER HEAD INSTALLATION:** Connect top outlet (1) to shower arm (2) with proper fittings. To prevent damage to finish on shower arm, insert wall end of shower arm into shower flange (3) before screwing arm into riser connection. Thread shower head (4) onto shower arm. Apply plumber tape to pipe threads on both ends. Do not overtighten shower head.

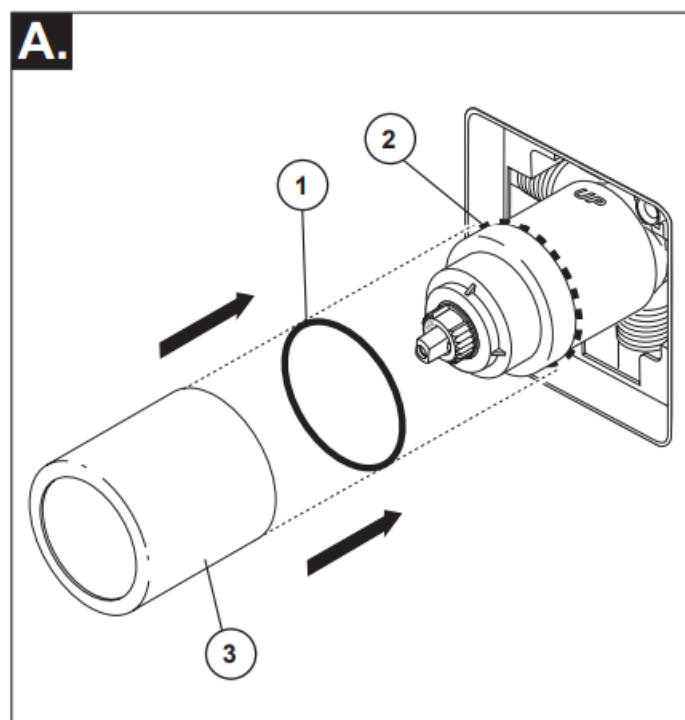


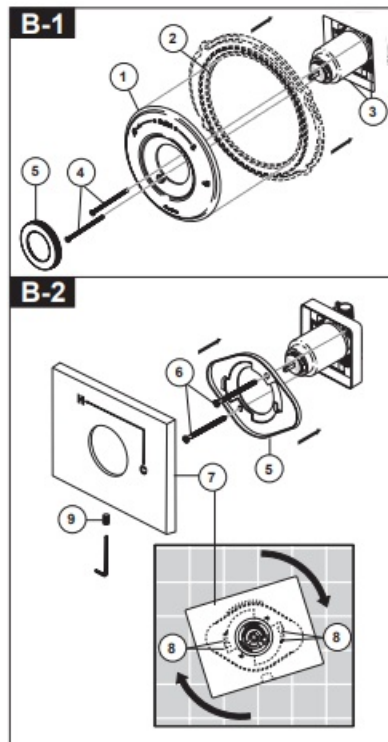
- To combine the two showers, connect the top slot (1) of the handshower onto the tab (2) of the showerhead. Push the handshower into the showerhead until the two parts snap together.
- If the showerhead moves when removing the handshower, hand tighten the connection between the showerhead and the shower arm.
- To change spray modes, turn the lever/dial (3) left or right, or push button (3), to the desired setting. Turn knob or lever (4) to change between showerhead only, showerhead and handshower or handshower only.

FOR TUB SPOUT INSTALLATION:

Refer to the installation instructions supplied with your spout. Do not connect deck mount spouts to in-wall valves. Do not use hand showers connected in lieu of a tub spout to a tub/shower valve. Do not use PEX tubing for tub spout drop.

Trim Installation





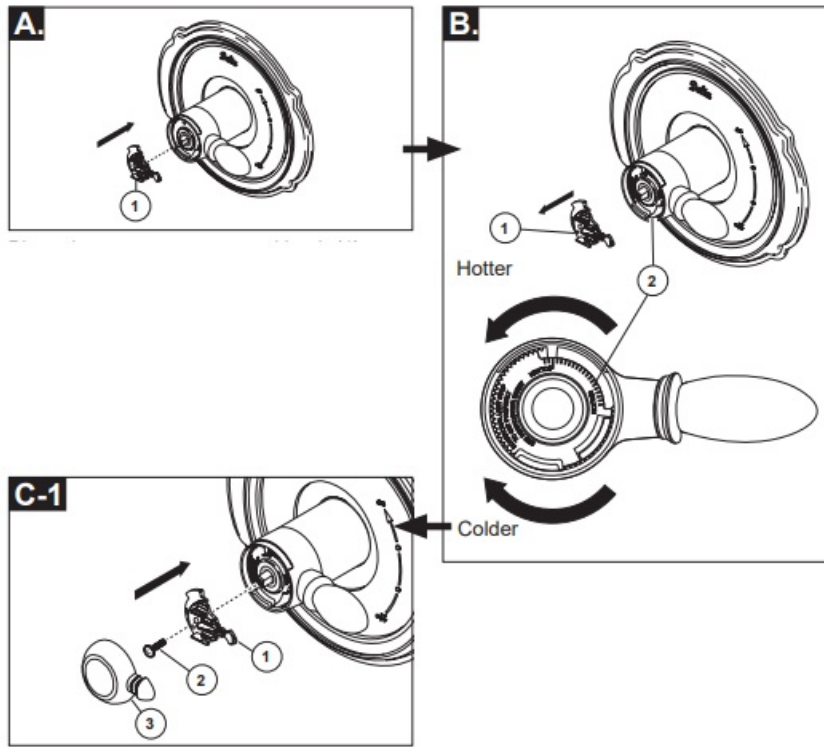
Slide O-ring (1) over cartridge and the bonnet nut (2). The O-ring, which acts as a spacer to steady the sleeve, should rest behind the bonnet nut. Slide the sleeve (3) over the cartridge, body and O-ring. Ensure sleeve is properly positioned over the front of cartridge.

Note: Adjust for up to 1" thick wall. For thick wall installation, visit delta faucet website, check "view technical specification" of the models you bought, order the appropriate thick wall installation kit RP to get additional 1 3/4" wall thickness.

1. B-1: Secure the escutcheon (1) and backplate
2. (if your model has one) to the bracket
3. using the 2 screws (4) provided. Do not overtighten escutcheon screws. Press the cover (5) onto the escutcheon (1) when your product includes the cover.

Install volume control handle (1) with lever to the right. Seat stop (2) into volume handle. Turn to the on position. DO NOT SECURE WITH SCREW.

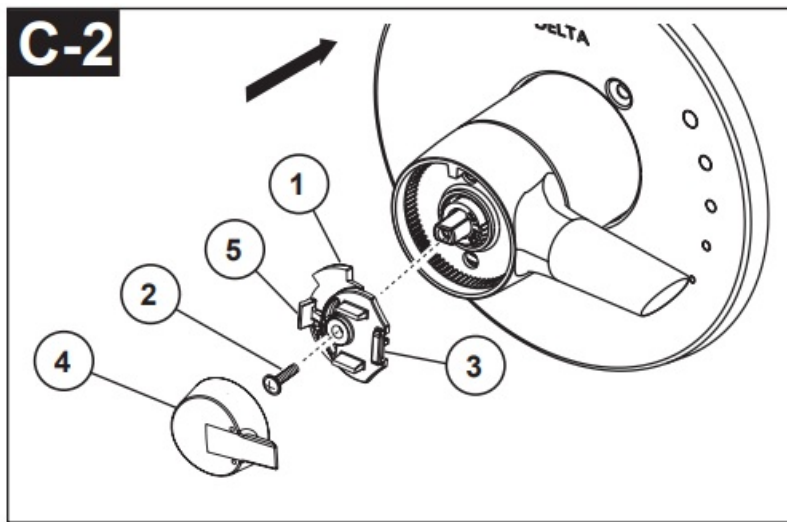
Installation and Adjustment of the Rotational Limit Stop



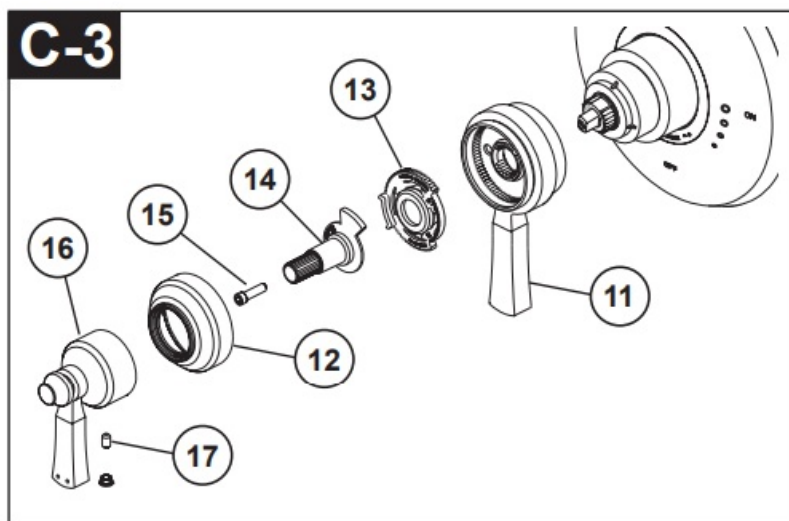
- Place the temperature control knob (1) on volume handle and rotate to the mixed position (if required). DO NOT SECURE WITH SCREW. Turn on water supplies; let the water run until both hot and cold water is as hot/cold as possible. Place thermometer in a plastic tumbler, and hold the tumbler in the water stream. Record the temperature reading.
- If the water temperature is above 120°F, remove the temperature control knob (1) and rotate the limit stop (2) clockwise one tooth for every 4°F – 6°F (approximate) change in temperature. If water temperature is cooler than desired, rotate the limit stop counterclockwise.

IMPORTANT: The first position of the Rotational Limit Stop (the Limiter) is that position that restricts the rotation of the stem the most and is at the maximum clockwise setting. According to industry standards, the maximum allowable temperature of the water exiting from the valve is 120°F. This temperature may vary in your local area. The Rotational Limit Stop may need to be readjusted if the inlet water temperature changes. For instance, during the winter, the cold water temperature is colder than it is during the summer which could result in varying outlet temperatures. Typical temperature for a comfortable bath or shower is between 90°–110° F.

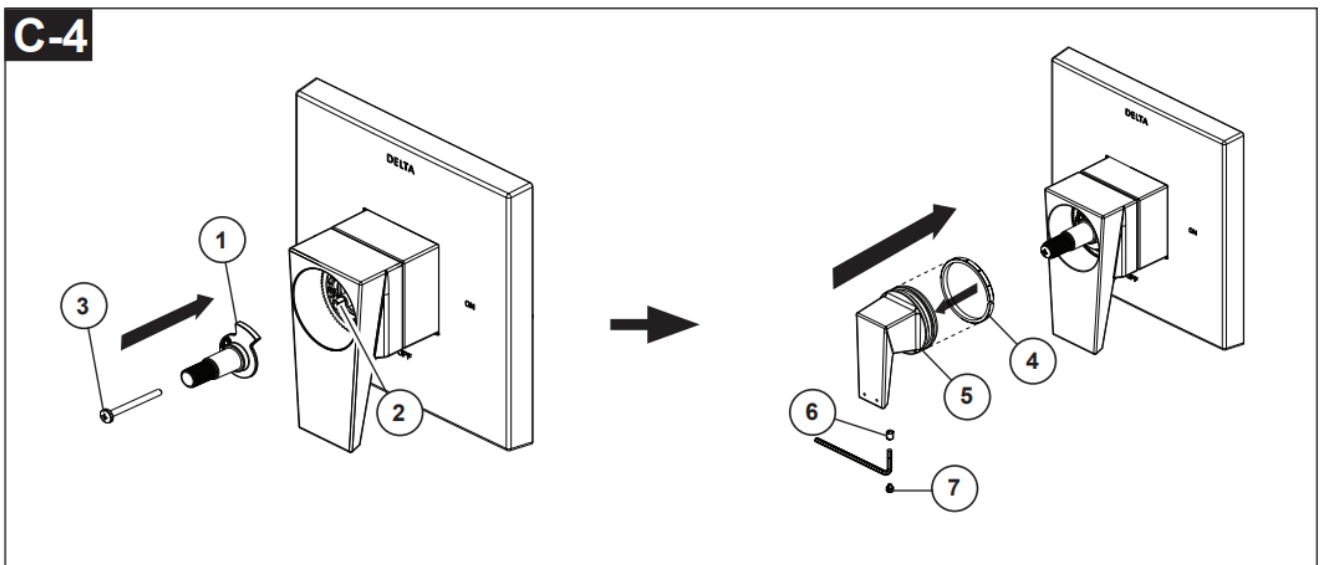
- Secure temperature control knob (1) with screw (2). snap on temperature control cover (3) with side snaps onto knob (1).



- Secure temperature control knob (1) with screw (2). Hook (3) front of temperature control cover (4) onto knob (1) before engaging rear snap (5).



Place volume handle (11) onto cartridge. Seat stop (13) into volume handle, place adapter (14) into handle and tighten screw (15). Thread cover (12) onto handle. Place temperature handle assembly (16) onto cartridge and drive set screw (17).



Install adapter (1) over valve stem (2) and secure it with screw (3).

- Install washer (4) onto handle (5), slide handle onto adapter and secure it with screw (6), then cover set screw

with handle button (7).

Potential scald or thermal shock injury could result due to cross flow if outlet at the shower is blocked or restricted (e.g., pause control on hand shower). Be sure to point hand shower away from you when re-starting flow or install inlet check valves on both supply lines to prevent possible injury.

Clean and Care

Care should be given to the cleaning

of this product. Although its finish is extremely durable, it can be damaged by harsh abrasives or polish. To clean, simply wipe gently with a damp cloth and blot dry with a soft towel.

Warning: Scrubbing Bubbles® Bathroom Cleaner and Lysol® Basin Tub and Tile Cleaner must not be used on the clear knob handles and levers. Use of these cleaners can result in cracked or severely damaged handles. If overspray gets onto the handles, immediately wipe them dry with a soft cotton cloth.

Maintenance

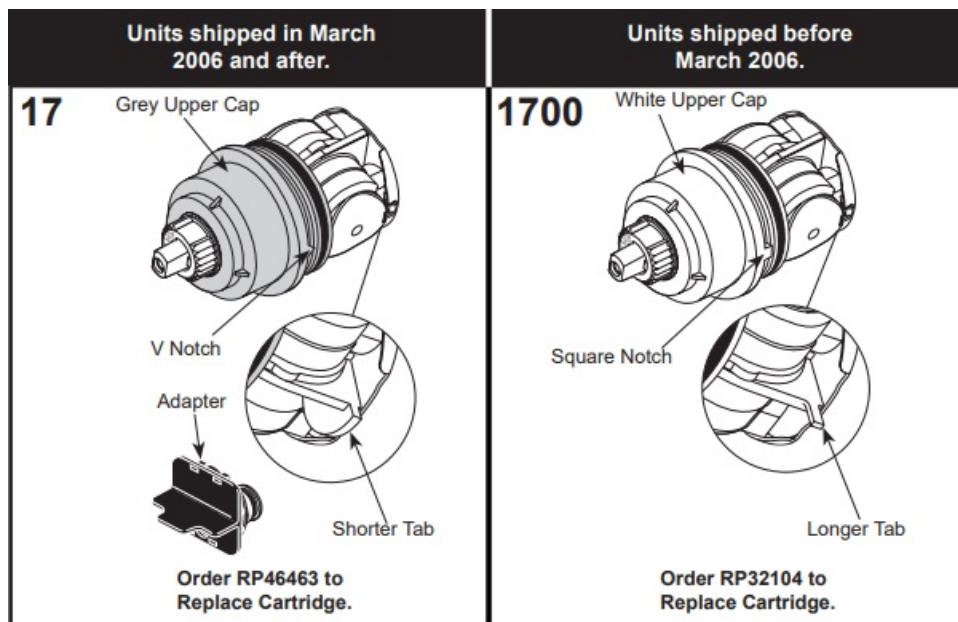
Faucet leaks from tub spout/hand shower: SHUT OFF WATER SUPPLIES.

- Replace valve cartridge
- RP46463 or RP32104
- See Helpful Hints 1, 2 & 3.

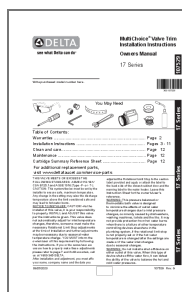
Helpful Hints:

1. Before removing valve cartridge assembly for any maintenance, be sure to note the position of the rotational limit stop on the cap. The valve cartridge assembly must always be put back in the same position. BE SAFE! After you have finished the installation, turn on valve to make sure COLD WATER FLOWS FIRST.
2. To remove valve cartridge from body, shut off water supplies and remove handle and bonnet nut. Do not pry the valve cartridge out of the body with a screwdriver. Place handle on stem and rotate counterclockwise approximately 1/4 turn after the stop has been contacted. Lift valve cartridge out of body.
Remove seats and springs and replace.
Place the largest diameter of the spring into the seat pocket first and then press the tapered end of the seal over the spring. Reassemble valve cartridge and replace in body following instructions given in 1 above.
3. If the water in your area has lime, rust, sand or other contaminants in it, your pressure balance valve will require periodic inspection. The frequency of the inspection will depend on the amount of contaminants in the water. To inspect valve cartridge remove it and follow the steps in note 1 above. Turn the valve to the full mix position and shake the cartridge vigorously. If there is a rattling sound, the unit is functional and can be reinstalled following instructions given in note 1 above. If there is no rattle, replace the housing assembly with the proper RP.

Cartridge Summary Reference Sheet



Documents / Resources



[DELTA 17 Series MultiChoice Valve Trim](#) [pdf] Owner's Manual

T17433-SS-I, T17233-CZ, T17233-CZ-I, 17 Series MultiChoice Valve Trim, 17 Series, MultiChoice Valve Trim, Valve Trim, Trim

References

- deltafaucet.com/service-parts
- [User Manual](#)

[Manuals+](#), [Privacy Policy](#)

This website is an independent publication and is neither affiliated with nor endorsed by any of the trademark owners. The "Bluetooth®" word mark and logos are registered trademarks owned by Bluetooth SIG, Inc. The "Wi-Fi®" word mark and logos are registered trademarks owned by the Wi-Fi Alliance. Any use of these marks on this website does not imply any affiliation with or endorsement.