

 **DELTA**
FAUCET COMPANY
15718LF
Single Handle
Lavatory
Centerset
Faucets



DELTA 15718LF Single Handle Lavatory Centerset Faucets Instruction Manual

[Home](#) » [Delta](#) » DELTA 15718LF Single Handle Lavatory Centerset Faucets Instruction Manual 

Contents

- [1 DELTA 15718LF Single Handle Lavatory Centerset Faucets](#)
- [2 TOOLS](#)
- [3 Cleaning and Care](#)
- [4 Faucet Installation](#)
- [5 Install Pop-Up Assembly](#)
- [6 MORE INFO](#)
- [7 Documents / Resources](#)
 - [7.1 References](#)

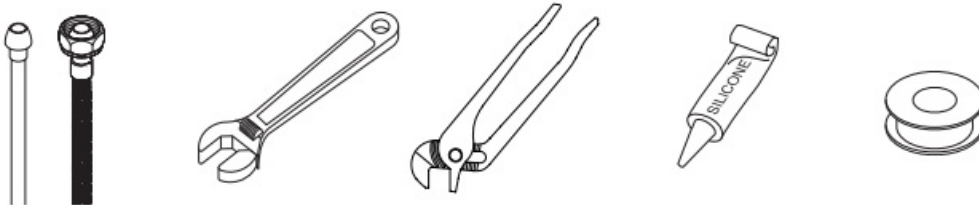


DELTA 15718LF Single Handle Lavatory Centerset Faucets



TOOLS

You may need

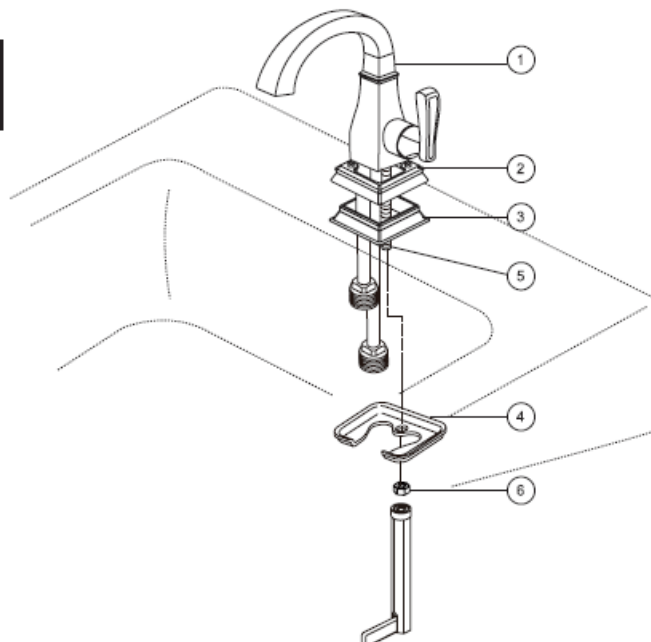


Cleaning and Care

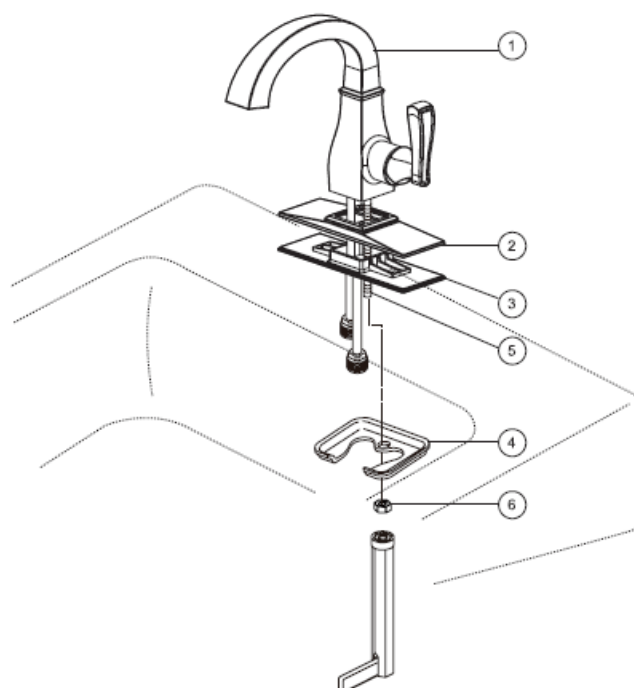
- Care should be given to the cleaning of this product. Although its finish is extremely durable, it can be damaged by harsh abrasives or polish. To clean, simply wipe gently with a damp cloth and blot dry with a soft towel.

Faucet Installation

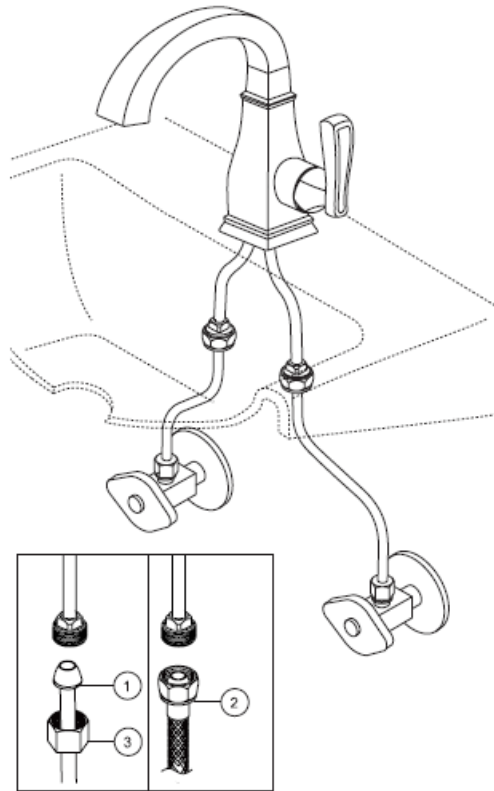
1A



1B

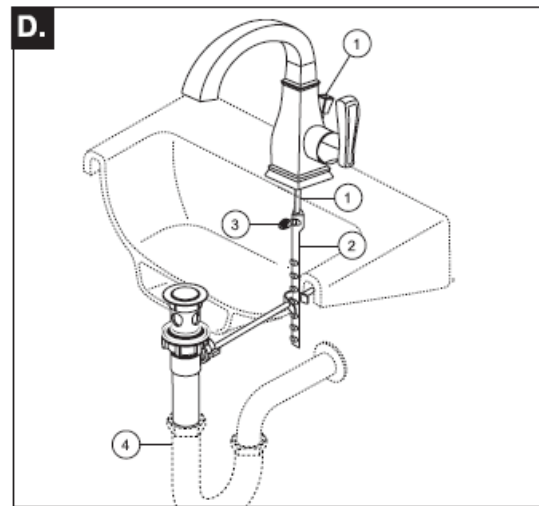
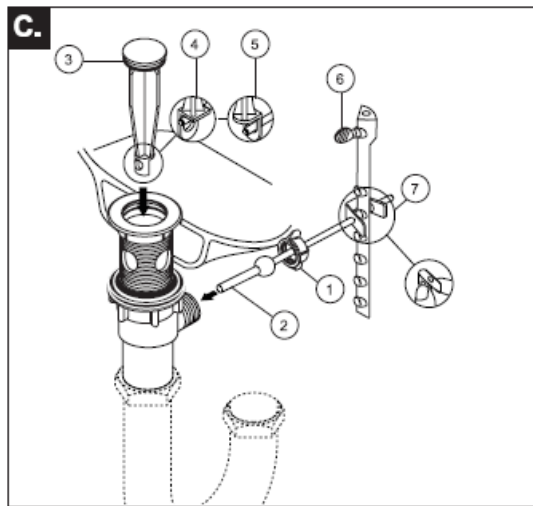
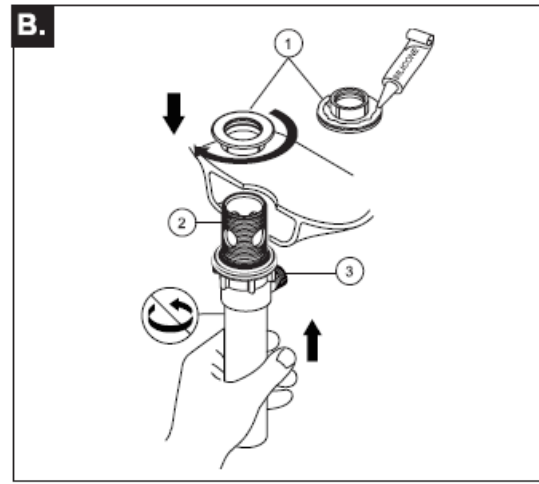
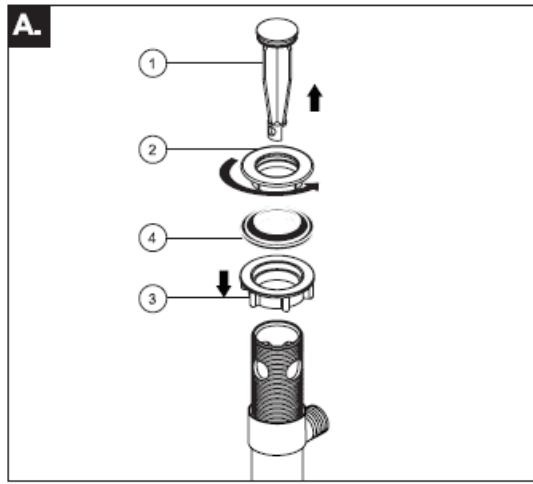


Position faucet (1) with single or three hole escutcheon (2) and gasket (3) on mounting surface. Option: If mounting surface is uneven, use silicone sealant under the gasket (3). Place mounting hardware (4) over mounting stud (5) under sink. Secure with mounting nut (6). Tighten mounting nut securely.



- CONNECT TO WATER SUPPLIES.
- (HOOK-UPS NOT PROVIDED).
 - Determine which type of connection you will be making.
- (1) Ball nose risers (3/8" O.D. copper tubing) with coupling nuts (3) (not supplied) or (2) 1/2" I.P.S faucet connectors.

Install Pop-Up Assembly



1. Remove stopper (1) and flange (2). Screw nut (3) all the way down. Push black gasket (4) down.
2. Remove pivot nut (1). Install horizontal rod (2) and stopper (3) as little removable (4) or non-removable (5). Hand tighten pivot nut (1). Attach horizontal rod to strap (6) using clip (7).
3. Apply silicone to the underside of the flange (1). Insert body (2) into the will sink. Screw flange onto the body. Pivot hole (3) must face the back of the sink. Tighten nuUgasket, and clean excess silicone.
4. Insert lift rod (1) through the faucet and into the strap (2). Tighten all screws (3). Connect assembly to drain (4).

• FLUSH SYSTEM / CHECK FOR LEAKS

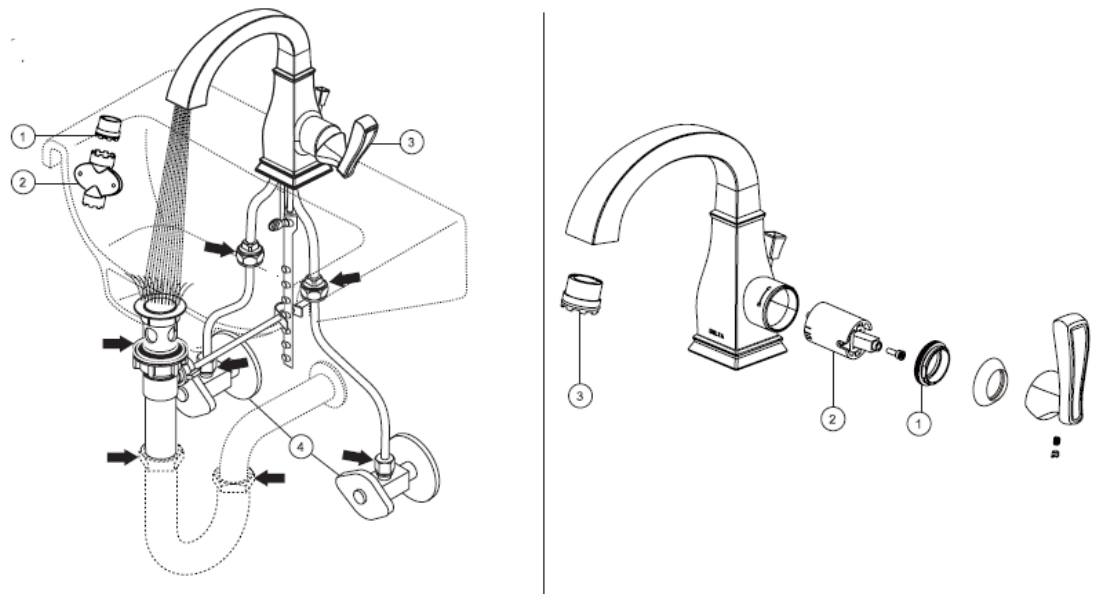
- Remove the aerator (1) using a supplied wrench (2) and turn faucet handle (3) all the way on. Slowly turn on hot and cold water supplies (4) and flush water lines for one minute.
- **Important:** This flushes away any debris that could cause damage to internal parts. Check all connections at arrows for leaks. Re-tighten if necessary, but do not over-tighten

• Maintenance

• SHUT OFF WATER SUPPLIES

- If faucet leaks from under handle:
 - Remove handle and ensure bonnet (1) is tight
- If leak persists:
 - Replace cartridge (2).
- If faucet leaks from spout:
 - Replace cartridge (2).

- If faucet exhibits very low flow:
 - Remove and clean aerator (3).



MORE INFO

- Register Online: www.deltafaucet.com/registerme
- To reference replacement parts and access additional technical documents and product info, visit www.deltafaucet.com
- **CAUTION**
- Failure to read these instructions before installation may result in personal injury, property damage, or product failure. The manufacturer assumes no responsibility for product failure due to improper installation.

Documents / Resources

	<p>DELTA 15718LF Single Handle Lavatory Centerset Faucets [pdf] Instruction Manual 15718LF-SP, 15718LF-BL, 15718LF Single Handle Lavatory Centerset Faucets, 15718LF, Single Handle Lavatory Centerset Faucets, Handle Lavatory Centerset Faucets, Centerset Faucets, Faucets</p>
--	--

References

- [User Manual](#)

[Manuals+ Privacy Policy](#)

This website is an independent publication and is neither affiliated with nor endorsed by any of the trademark owners. The "Bluetooth®" word mark and logos are registered trademarks owned by Bluetooth SIG, Inc. The "Wi-Fi®" word mark and logos are registered trademarks owned by the Wi-Fi Alliance. Any use of these marks on this website does not imply any affiliation with or endorsement.