

DELLEMC Repository Manager Version 3.4.0 Release Notes User Guide

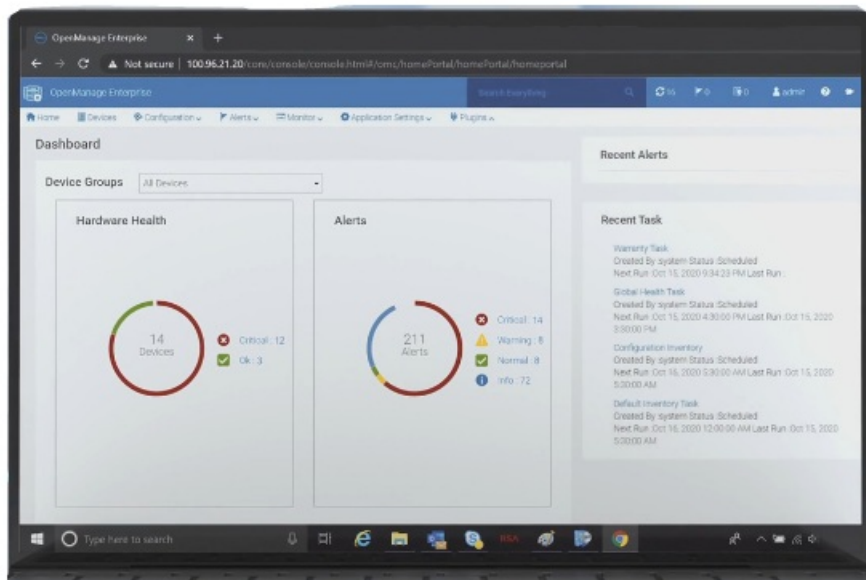
[Home](#) » [DELLEMC](#) » DELL EMC Repository Manager Version 3.4.0 Release Notes User Guide 

Contents

- [1 DELL EMC Repository Manager Version 3.4.0 Release Notes](#)
- [2 Dell EMC Repository Manager Version 3.4.0 Release Notes](#)
- [3 Importance](#)
- [4 Fixes](#)
- [5 Hardware requirements](#)
- [6 Known Issues on Microsoft Windows Operating Systems](#)
- [7 Known Issues](#)
- [8 Installation Instructions](#)
- [9 Notes, cautions, and warnings](#)
- [10 Documents / Resources](#)
- [11 Related Posts](#)



DELLEMC Repository Manager Version 3.4.0 Release Notes



Dell EMC Repository Manager Version 3.4.0 Release Notes

Release Type and Definition

Topics

- Importance
- What is new in this release
- Enhancements
- Fixes
- Prerequisites for installing DRM
- Known Issues on Microsoft Windows Operating Systems
- Known Issues
- Installation Instructions
- Contacting Dell
- Copyright

The Dell EMC Repository Manager (DRM) ensures that the Dell EMC systems are up-to-date with the latest BIOS, driver, and firmware.

Current Version

- 3.4.0

Previous Version

- 3.3.2

Importance

OPTIONAL: It is recommended that you review specifics about the update to determine if it applies to your system. The update contains changes that impact only certain configurations or provides new features that may

or may not apply to your environment.

What is new in this release

- This DRM v3.4.0 has been demoted. Use the latest DRM v3.4.1, available on the support site.

Enhancements

- This section describes the enhancements made in this release to DRM.
- Enhanced security with database password protection.

Fixes

- The generated catalog after import of iDRAC dependency DUP to a repository in DRM fails.
- The DRM export catalog fails with the custom catalog.
- The catalog in DRM import shows incorrect schema.
- DRM copy fails to copy component to another legit bundle and gives no error msg.
- DRM does not use proxy settings when upgrading and downloading to the latest DRM version.
- Repository creation fails for iDRAC integration using CLI with some special characters.
- Uninstalling or downgrading DRM leaves the DRM database and repository DUP packages present in storage.
- DRM does not sort DUPs in bundle when clicking Date Modified column header.

Prerequisites for installing DRM

- This section lists the specific prerequisites to be considered before installing DRM.

Hardware requirements

Table 1. Hardware requirements

Requirement	Details
Processor	1 GHz Pentium processor or equivalent
RAM	4 GB
Hard Disk	1 GB of available space
Display	1024 x 768 high color, 32-bit
Optical Drive (Optional)	CD/DVD writer

Software requirements

DRM works on a wide range of Operating Systems for Windows and Linux. Listed are the specific Operating Systems that DRM is tested with:

- Microsoft Windows Server 2019

- Microsoft Windows Server 2022
- Microsoft Windows 10
- Microsoft Windows 11
- RedHat Enterprise Linux 7.9
- RedHat Enterprise Linux 8.5
- SUSE Linux 15
- Ubuntu 20.04

Optional requirements

- Internet connectivity— To access, create, work with bundles, update catalogs, plug-ins, and repositories.
NOTE: You can use the local repositories on DRM without internet connectivity.
- CD/DVD or USB burning software— To create a bootable CD/DVD or bootable USB.

Known Issues on Microsoft Windows Operating Systems

- Few of the options for creating shortcut links for DRM are missing while interactive installation.
- Some files and copied shortcut are not deleted after uninstall, If application is not closed before uninstall process.

Known Limitations

- The **Confirm password** field is not displayed for database password during installation or upgradation of DRM v 3.4.0 and above through CLI.
- Proxy password does not support special characters (“@” and “:”) for setting the proxy in CLI.
- Repository creation using integration fails when password contains special character :.
- Special character ” must be used with an escape character \ as \” to set any passwords through CLI.
- If you refresh a repository that is created using Non-enterprise catalogs (vSAN catalog, or MX validated stack catalog), refers to Enterprise catalog and then perform updates based on the data available in Enterprise catalog. However, does not use the latest version of catalog which was used to create repository.
- DRM is not supported on localized operating systems.
- DRM should not be installed on a network share.
- Remote access to DRM is not supported.
- On Linux Operating Systems, DRM cannot be installed on a custom folder or location other than /opt/dell.
- DRM does not support multiuser execution. If DRM is installed for all users, it can be launched and used in only one of the user sessions.
- The size of the repository that is created is not displayed in the output if the catalog used for creation does not contain the size information for DUPs.
- DRM current version cannot discover the Microsoft Exchange Web Service URL from the email ID. User has to manually update the data for email configuration. Consult Users Guide for process for finding the Microsoft Exchange Web URL.
- Repository refresh shows dates 1 to 30 for all months. For February if 30 is selected, the refresh happens on the last day of the month.
- It is recommended not to launch the application from multiple user contexts. Occasionally there is certain

unexpected GUI behavior because of insufficient permissions to the temp folder(C:\windows\temp or /tmp).

- Creating a repository from inventory file and with available catalog using CLI is not supported when catalog and inventory are placed in different network location.
- Comparison shows some downgrades and upgrades for DUPs incorrectly. Check the properties of DUPs in the right pane of the UI for devices supported before revising the component.
- Refresh inventory feature is not supported for any repository that is created using a local inventory.xml file.
- In DRM GUI, using the import feature, you can import only one DUP at a time, whereas in CLI, you can import multiple DUPs.
- Multiple iDRAC versions are displayed when creating a manual repository through GUI on 13G servers using the IDSDM DUPs.
- IDSDM DUPs are not listed when creating a repository on 13G servers having IDSDM firmware DUPs.
- Import repository job fails if you have selected the FX2 Chassis System Management DUPs.

Known Issues

Issue 1

You cannot downgrade to a lower version of DRM using the current DRM installer.

Resolution- To install an earlier version of DRM, first uninstall the newer version manually through Add or Remove Programs in Windows **Control Panel** and then run the installer of the wanted version.

Issue 2

Mapped network path for a user is not accessible in DRM as a location with Microsoft Windows. The mapped network path is only available to download the login .zip format.

Resolution- Provide the network path along with authentication.

Issue 3

Random program files of DRM are deleted when Microsoft Windows goes for a hard system reset.

Resolution- Repair or reinstall the application to update the missing files.

Issue 4

Some of the repositories from DRM 2.x may not be migrated to DRM 3.x, if the DRM 2.x application is up and running during DRM 3.x installation.

Resolution- Remove the database files, close the DRM 2.0 application, and then install DRM 3.0.

Issue 5

If the application GUI is kept open during uninstallation, a message is displayed which indicates a system restart is required but system does not reboot even after consent for the same.

Resolution- Uninstall DRM only after closing the application GUI.

Issue 6

During upgrade, the installer displays the default path even if the previous installation was on a custom path.

Resolution- You can upgrade DRM in default path or change it to custom path again. If you provide a different location, delete the old files in previous path manually.

Issue 7

Share folders of an SMB 2 server cannot be enumerated in browse for location windows.

Resolution- Provide the share name along with an IP or system name, and the folders can be browsed.

Issue 8

Store Clean-up job fails for an SMBv2 share if the store contains at least one file apart from folders.

Resolution-Delete the individual files manually and then run the store cleanup job for the rest of the content.

Issue 9

Bin files in the temporary folder are not getting deleted immediately.

Resolution- The files get deleted once the service is idle. Alternately, you can delete the files manually from the folder.

Issue 10

Component is not deleted from a repository with the DRM delete command.

Resolution- Ensure that there is no space between the comma and the component name in the command, and then run the command.

Issue 11

Proxy password is not displayed when refreshing an inventory.

Resolution- Enter the proxy password and then click **Refresh**.

Issue 12

While scheduling a repository job, the time is displayed as "0-1:00" when the down arrow key is clicked. After clicking it again, it turns to "0-2:00" and so on.

Resolution-Use the up arrow key to set the hour value.

Issue 13

After repair when you chose to restart the system, the system does not restart automatically.

Resolution- Restart the system manually.

Issue 14

If you are using home path as your target location for exporting a file from DRM in Linux operating system, the browse window becomes unresponsive.

Resolution- Remove the trailing slash, and then export the file.

Issue 15

If you have already used /home/ for exporting a file and the browse window becomes unresponsive.

Resolution-Delete the directory: /var/dell/drm/config, and then continue using DRM.

Issue 16

If you upgrade DRM to the latest version and use different installation paths other than the previously used installation path, the following issues may occur:

- An error message while accessing OLH:
- Lost connection. Waiting for DRMs-service to reconnect.
- DRM version is not updated in CLI.

Resolution- Use same installation path as used before for updating DRM.

Issue 17

Unable to upgrade to DRM v3.4.0 from the older versions using VPN (Virtual private network) connection.

Resolution -Disconnect from VPN connection and then try to upgrade and download DRM.

Issue 18

OLH does not work in DRM, when launched through CLI on Linux operating system.

Resolution- Recommends you to launch DRM through CLI using the same user session as the logged-in user.

Issue 19

The generated catalog after import of iDRAC dependency DUP to an existing repository in DRM fails even after upgrading to DRM version 3.4.0.

Resolution- Create a new repository in DRM version 3.4.0 and import a iDRAC dependency DUP and then export the catalog.

Issue 20

DRM application does not launch using the created shortcut icon in Linux Operating Systems after install or upgrade of DRM to the latest version.

Resolution- Launch DRM using CLI command or Use the following commands:

- For RHEL

1. `chown <user> drm.Desktop` (Currently logged-in user)
2. `chmod +x drm.Desktop`
3. Double-click the icon. Then click Trust Launcher.

- For Ubuntu or SLES

1. Copy the `drm.Desktop` file to the Desktop directory of the user.
NOTE: Desktop icons must be enabled from the system settings.
2. Right Click the icon and then select Allow Launching.

Issue 21

Unable to delete the selected repositories in DRM.

Resolution- Perform the delete operation again on the selected repositories.

Installation Instructions

- For more information about installation instructions on Microsoft Windows operating system, see Dell EMC Repository Manager Quick Installation Guide.

Contacting Dell

NOTE: If you do not have an active Internet connection, you can find contact information on your purchase invoice, packing slip, bill, or Dell product catalog.

Dell provides several online and telephone-based support and service options. Availability varies by country and product, and some services may not be available in your area. To contact Dell for sales, technical support, or customer service issues

1. Go to Dell.com/support.
2. Select your support category.
3. Verify your country or region in the Choose a Country/Region drop-down list at the bottom of the page.
4. Select the appropriate service or support link based on your need.

Copyright

© 2018 – 2022 Dell Inc. or its subsidiaries. All rights reserved. Dell, EMC, and other trademarks are trademarks of Dell Inc. or its subsidiaries. Other trademarks may be trademarks of their respective owners.

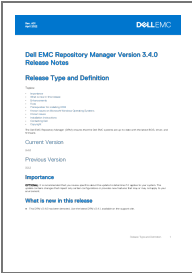
Notes, cautions, and warnings

NOTE: A NOTE indicates important information that helps you make better use of your product.

CAUTION: A CAUTION indicates either potential damage to hardware or loss of data and tells you how to avoid the problem.

WARNING: A WARNING indicates a potential for property damage, personal injury, or death.

Documents / Resources

	<p>DELLEMC Repository Manager Version 3.4.0 Release Notes [pdf] User Guide Repository Manager Version 3.4.0 Release Notes, Manager Version 3.4.0 Release Notes, Versi on 3.4.0 Release Notes</p>
---	--