

DELL S2419HGF Display Manager



DELL S2419HGF Display Manager User Guide

[Home](#) » [Dell](#) » DELL S2419HGF Display Manager User Guide 

Contents

- 1 [DELL S2419HGF Display Manager](#)
- 2 [Product Information](#)
- 3 [Product Usage Instructions](#)
- 4 [Overview](#)
- 5 [Using the quick settings dialog](#)
- 6 [Assigning preset modes to applications](#)
- 7 [Organizing Windows with Easy Arrange](#)
- 8 [Managing Multiple Video Inputs](#)
- 9 [Restoring Application Positions](#)
- 10 [Troubleshooting](#)
- 11 [Documents / Resources](#)
 - 11.1 [References](#)
- 12 [Related Posts](#)



DELL S2419HGF Display Manager



Product Information

Specifications

- **Model:** Dell S2419HGF/S2719DGF
- **Regulatory Model:** S2419HGFc/S2719DGFc
- **Display Manager:** Dell Display Manager
- **Supported Models:** Dell S2419HGF, Dell S2719DGF

Overview

- The Dell S2419HGF/S2719DGF is a gaming monitor with advanced features.
- It supports Dell Display Manager, which allows you to conveniently adjust various monitor settings.

Product Usage Instructions

Enabling DDC/CI:

To ensure proper communication between your computer and the monitor, make sure that DDC/CI is enabled.

Follow these steps:

1. Access the monitor's menu.
2. Navigate to the "DDC/CI" option.
3. Set it to "On".

Using Quick Settings Dialog

The Quick Settings dialog box provides easy access to adjust brightness, contrast levels, and screen resolution. It also allows you to access advanced features.

Here's how to use it:

1. Click on the Dell Display Manager's notification tray icon.
2. The Quick Settings dialog box will open.
3. Select the target monitor if multiple Dell monitors are connected.
4. Choose Manual Mode or Auto Mode.
5. Adjust the brightness and contrast levels.
6. You can also change the screen resolution.

Setting Basic Display Functions

You can manually select a preset mode or let the monitor apply a preset mode based on the active application.

Here's how to set basic display functions:

1. Select Manual Mode or Auto Mode from the Basic tab.
2. Adjust the Brightness and Contrast levels.
3. If multiple Dell monitors are connected, enable the display matrix control to apply settings to all monitors.

Assigning Preset Modes to Applications

You can assign preset modes to specific applications. However, please note that this feature is not supported for batch files, scripts, loaders, or non-executable files.

To assign preset modes to applications:

1. Select the desired application.
2. Assign a preset mode to it.
3. You can configure the Game preset mode for full-screen Direct3D applications.

Organizing Windows with Easy Arrange

The Easy Arrange feature allows you to create custom window layouts. Follow these steps to create a custom layout:

1. Arrange and position windows on the desktop (up to 10 windows).
2. Click on the "Save" link in Easy Arrange.
3. A custom layout icon will be created.

FAQ

Q: What is DDC/CI?

- **A:** DDC/CI stands for Display Data Channel/Command Interface. It is a communication channel used by Dell Display Manager to communicate with the monitor.

Q: Can I adjust the monitor's brightness and contrast levels?

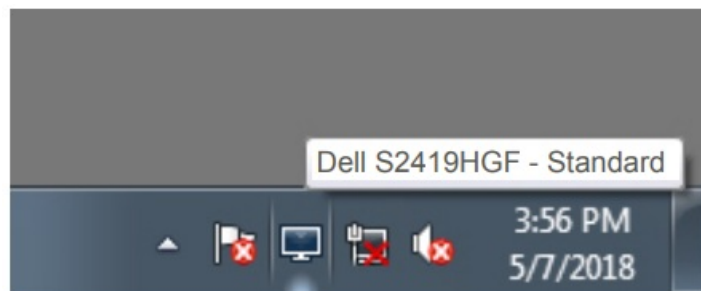
- **A:** Yes, you can adjust the monitor's brightness and contrast levels using Dell Display Manager's Quick Settings dialog box or the Basic tab.

Q: How many windows can I arrange using Easy Arrange?

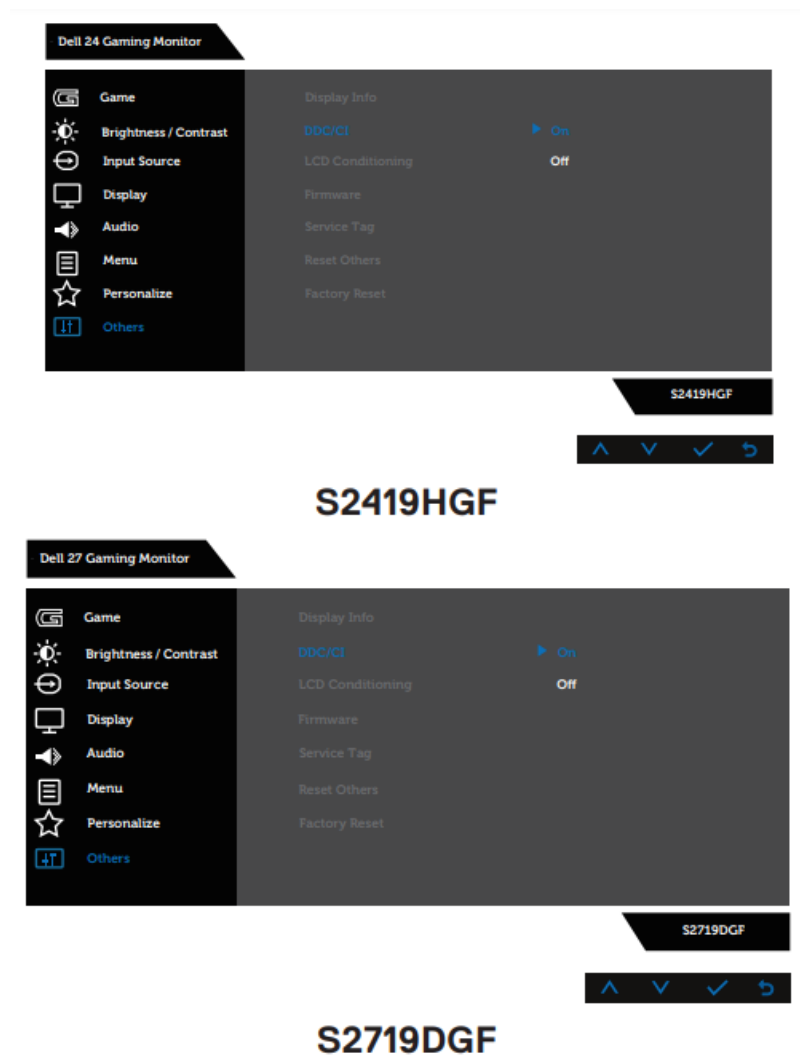
- **A:** You can arrange and position up to 10 windows on the desktop using the Easy Arrange feature.
- **NOTE** indicates important information that helps you make better use of your computer.
- **CAUTION** indicates potential damage to hardware or loss of data if instructions are not followed.
- **WARNING** indicates a potential for property damage, personal injury, or death.

Overview

- Dell Display Manager is a Windows application used to manage a monitor or a group of monitors.
- It enables manual adjustment of the displayed image, assignment of automatic settings, energy management, image rotation, and other features on selected Dell models.
- After installation, Dell Display Manager will run each time the system starts and will place its icon in the notification tray.
- Information about monitors connected to the system is always available when hovering over the notification tray icon.

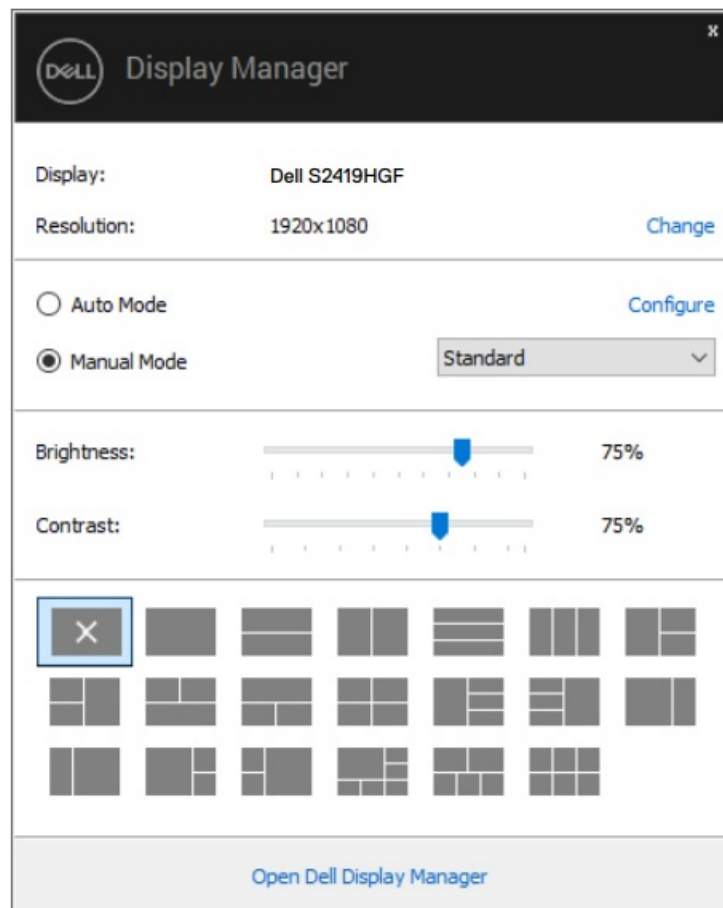


- **NOTE:** Dell Display Manager uses a DDC/CI channel to communicate with your monitor. Ensure that DDC/CI is enabled in the menu as below.



Using the quick settings dialog

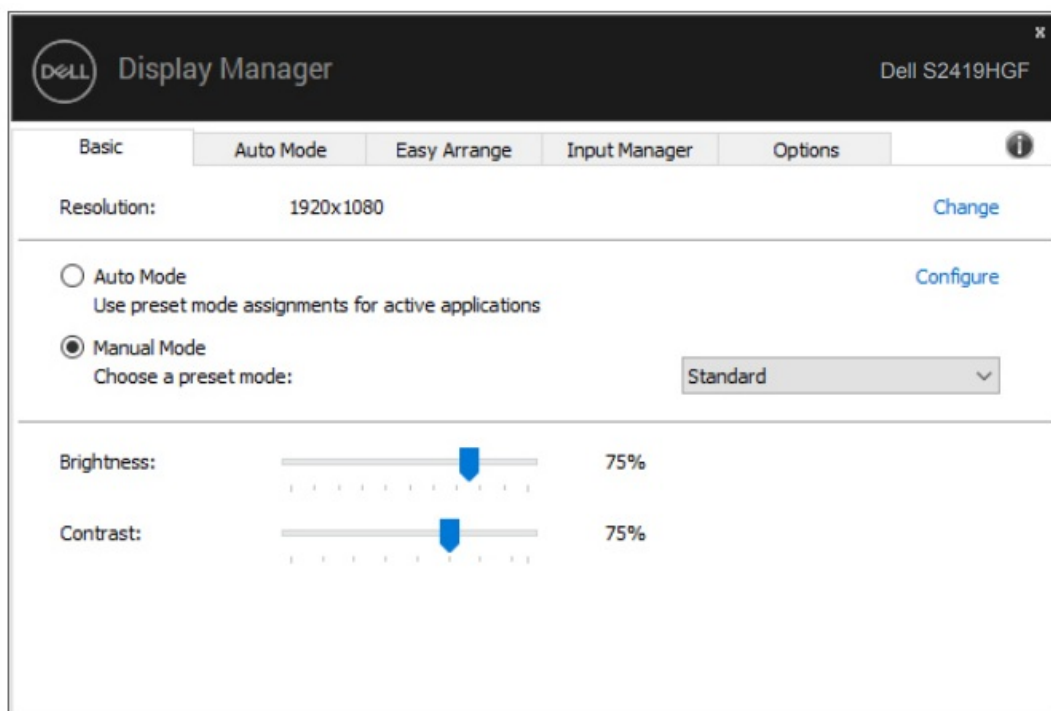
- Clicking Dell Display Manager's notification tray icon opens the Quick Settings dialog box.
- When more than one supported Dell model is connected to the system, a specific target monitor can be selected using the menu provided.
- The Quick Settings dialog box enables convenient adjustment of the monitor's brightness and contrast levels.
- You can select Manual Mode or Auto Mode, and the screen resolution can be changed.



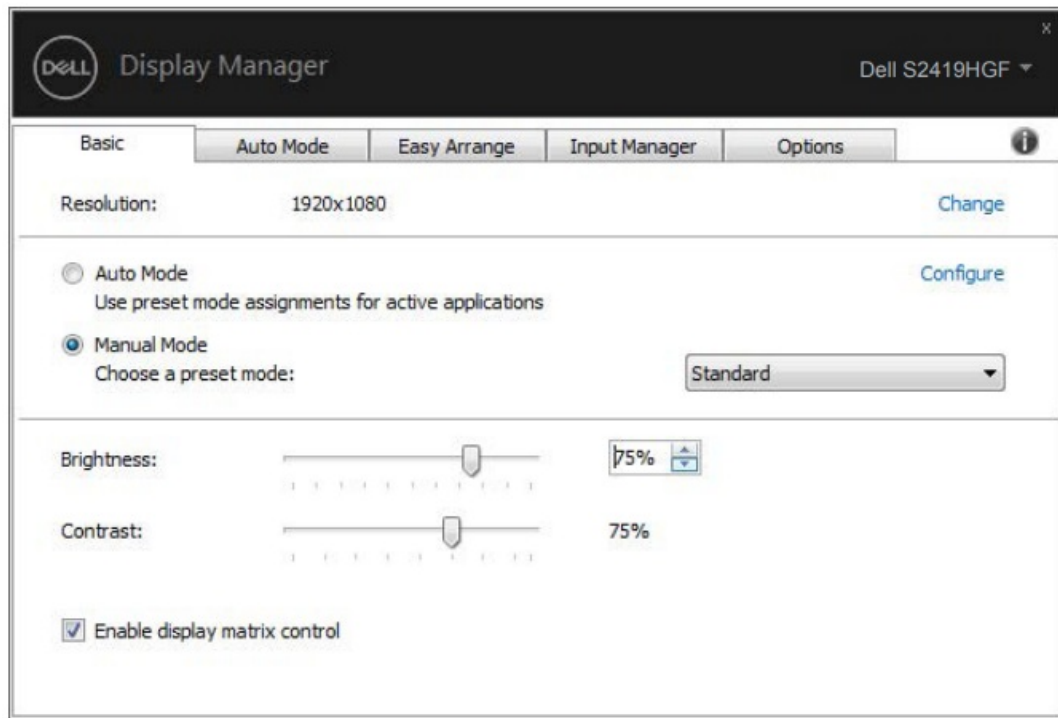
- The Quick Settings dialog box also provides access to Dell Display Manager's advanced user interface which is used to adjust Basic functions, configure Auto Mode, and access other features.

Setting basic display functions

- You can select Manual Mode which enables you to manually select a preset mode or select Auto Mode which applies a preset mode based on the active application.
- An on-screen message displays the current preset mode whenever it changes.
- The selected monitor's Brightness and Contrast can also be directly adjusted from the Basic tab.

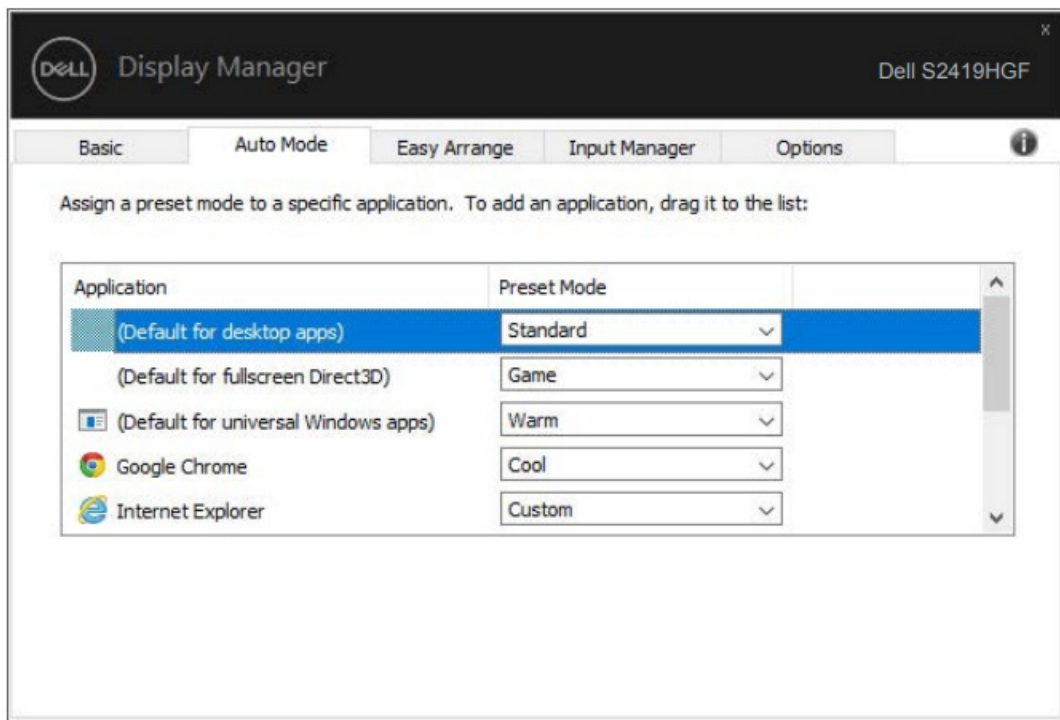


- **NOTE:** When multiple Dell monitors are connected, select “Enable display matrix control” to apply brightness, contrast, and color preset controls to all monitors.



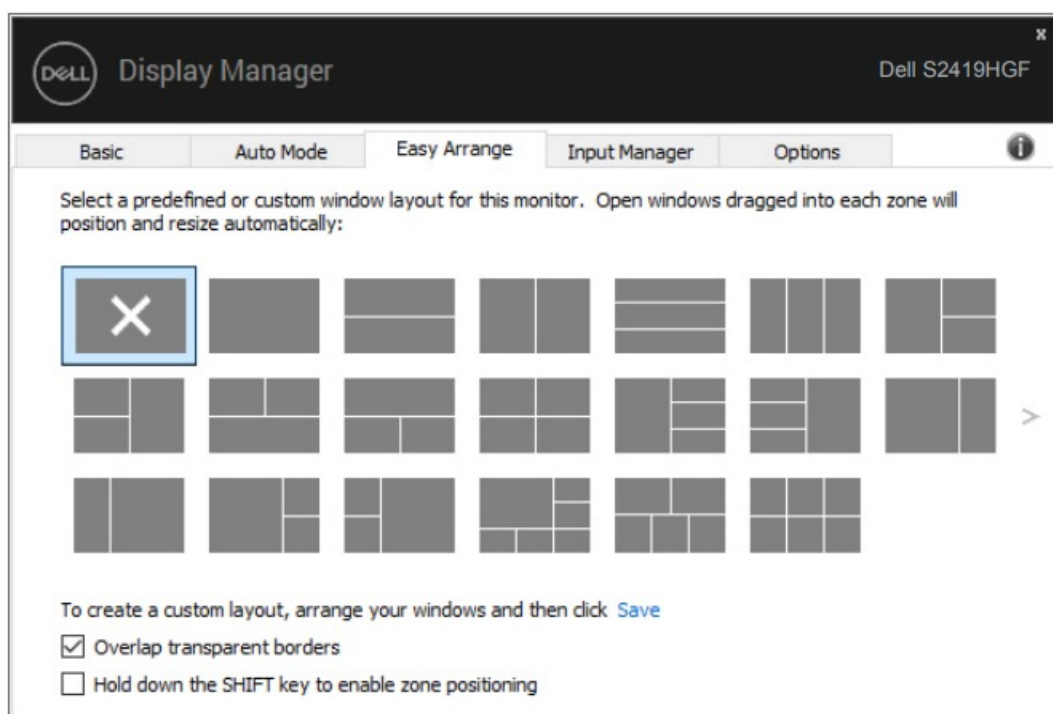
Assigning preset modes to applications

- The Auto Mode tab enables you to associate a specific Preset Mode with a specific application, and apply it automatically.
- When Auto Mode is enabled, Dell Display Manager will automatically switch to the corresponding Preset Mode whenever the associated application is activated.
- The Preset Mode assigned to a particular application may be the same on each connected monitor, or it can vary from one monitor to the next.
- Dell Display Manager is pre-configured for many popular applications.
- To add a new application to the assignment list, simply drag the application from the desktop, Windows Start Menu, or elsewhere, and drop it onto the current list.
- **NOTE:** Preset Mode assignments for batch files, scripts, loaders, and non-executable files such as zip archives or packed files, are not supported.
- You can also configure the Game preset mode to be used whenever a Direct3D application runs in full-screen mode.
- To prevent an application from using mode, assign a different preset mode to it.

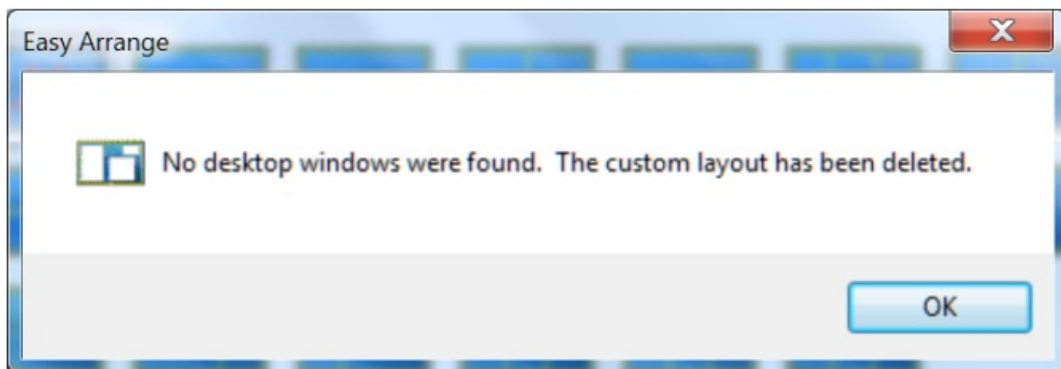


Organizing Windows with Easy Arrange

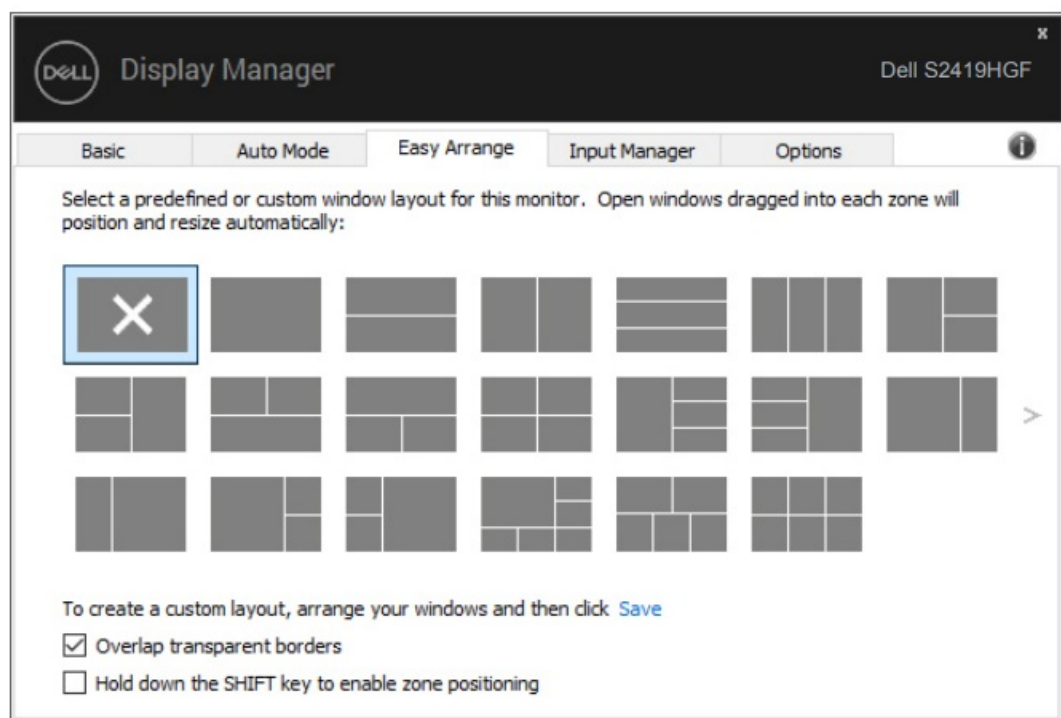
- On supported Dell monitors, the Easy Arrange tab enables you to easily arrange the open windows in one of the predefined layouts by dragging them in the zones.
- Press “>” or use the Page Up/Page Down key to find more layouts.
- To create a custom layout, arrange the open windows and then click Save.
- To get started with Easy Arrange, choose a target monitor and select one of the predefined layouts.
- The regions for that layout are displayed momentarily on the monitor.
- Next, drag an open window across the monitor.
- While the window is being dragged, the current window layout is displayed and an active region gets highlighted as the window passes over it.
- At any time, drop the window into the active region to place the window in that region.



- To create a custom window layout, size and position the windows (maximum 10) on the desktop and then click the Save link in Easy Arrange.
- The size and position of the windows are saved as a custom layout and the custom layout icon is created.
- **NOTE:** This option does not save or remember the open applications. Only the size and position of the windows are saved.

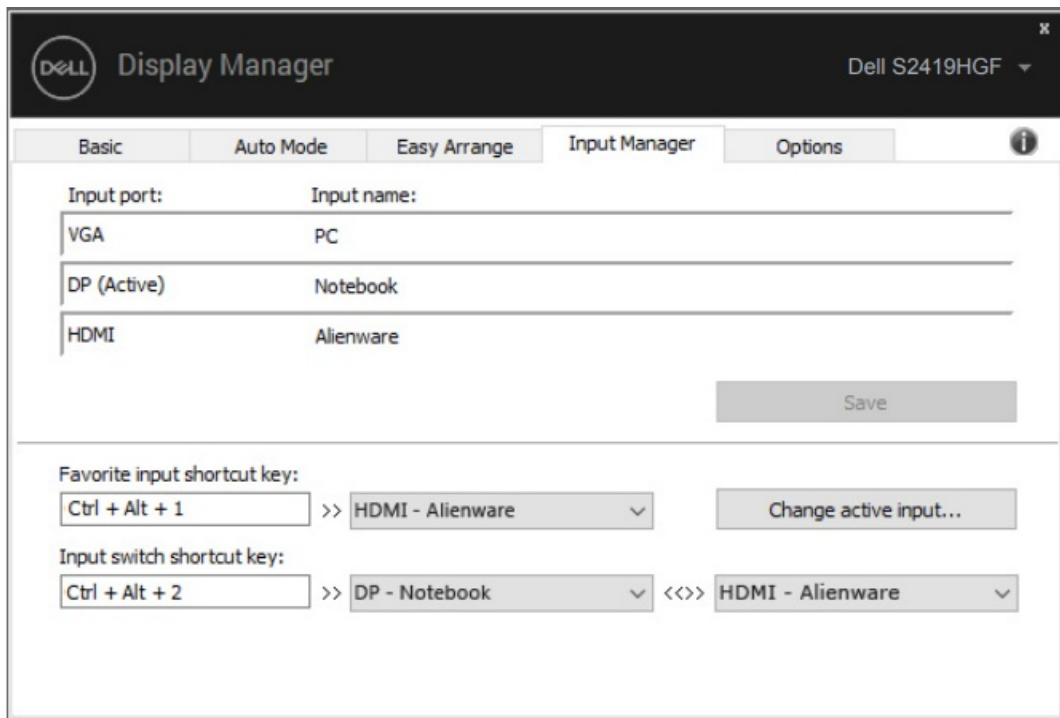


- To use the custom layout, select the custom layout icon. To delete the currently saved custom layout, close all windows on the desktop and then click the Save link in Easy Arrange.



Managing Multiple Video Inputs

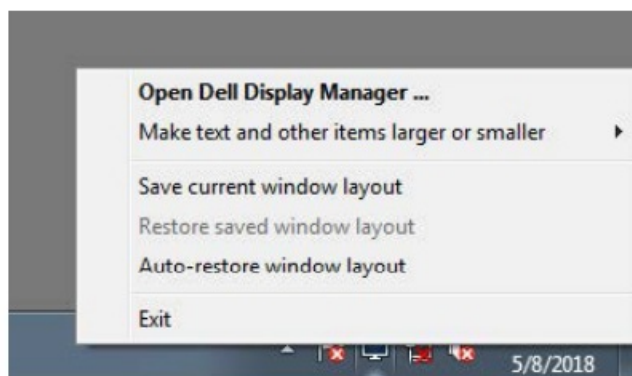
- The Input Manager tab provides convenient ways for you to manage multiple video inputs connected to your Dell monitor.
- It makes it very easy to switch between inputs while you work with multiple computers.
- All video input ports available to your monitor are listed. You can give each input a name as you like. Please save your changes after editing.
- You can define a shortcut key to quickly switch to your favorite input and another shortcut key to quickly switch between two inputs if you often work between them.



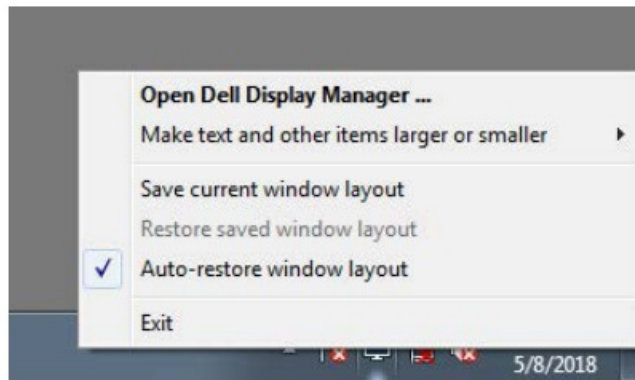
- **NOTE:** DDM communicates with your monitor even when the monitor is displaying video from another computer.
- You can install DDM on the PC you frequently use and control input switching from it.
- You may also install DDM on other PCs connected to the monitor.

Restoring Application Positions

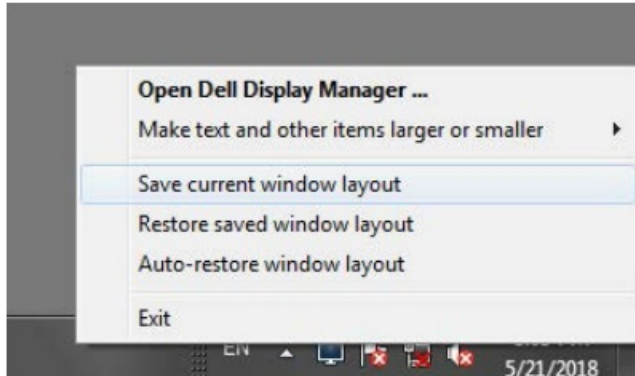
- DDM can help you restore application windows to their positions when you reconnect your computer to the monitor(s).
- You can quickly access this feature by right-clicking on the DDM icon in the notification tray.



- If you choose "Auto-restore window layout", your application windows' positions are tracked and remembered by DDM.
- DDM automatically puts the application windows into their original positions when you reconnect your PC to your monitor(s).



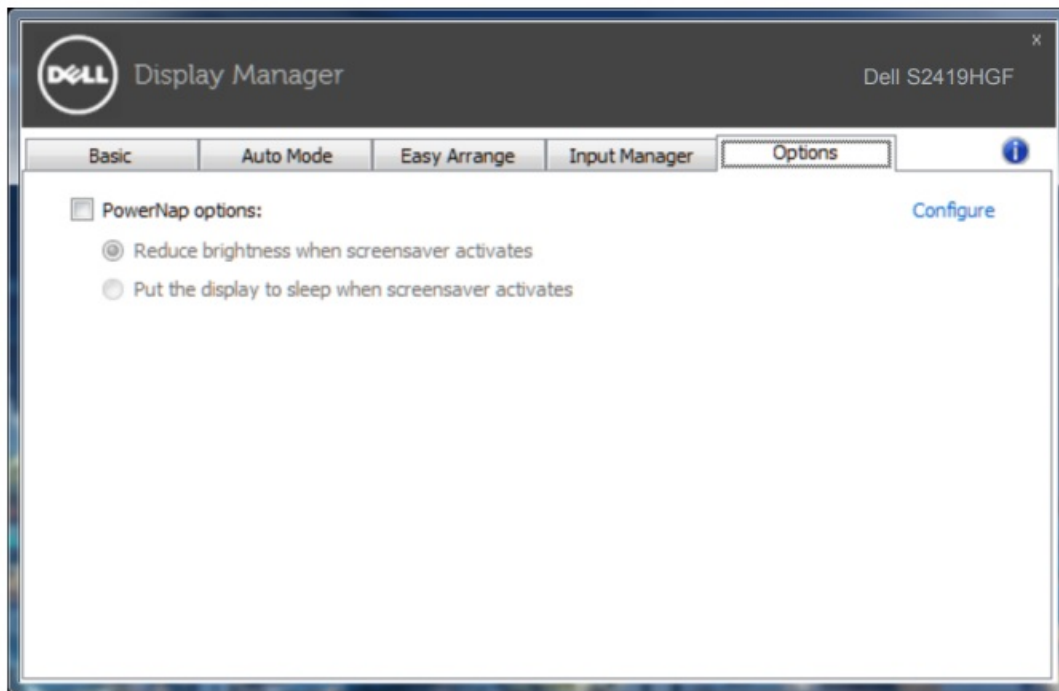
- If you want to go back to a favorite layout after you have moved the application windows around, you can first “Save current window layout” and later “Restore saved window layout”.



- You may use monitors with different models or resolutions in your daily routine, and you may apply different window layouts on them. DDM can know the monitor you have reconnected and restore application positions accordingly.
- In case you need to replace a monitor in a monitor matrix configuration, you can save the window layout before replacement and restore the layout after a new monitor is installed.
- **NOTE:** You should keep your applications running to benefit from this feature. DDM does not launch applications.

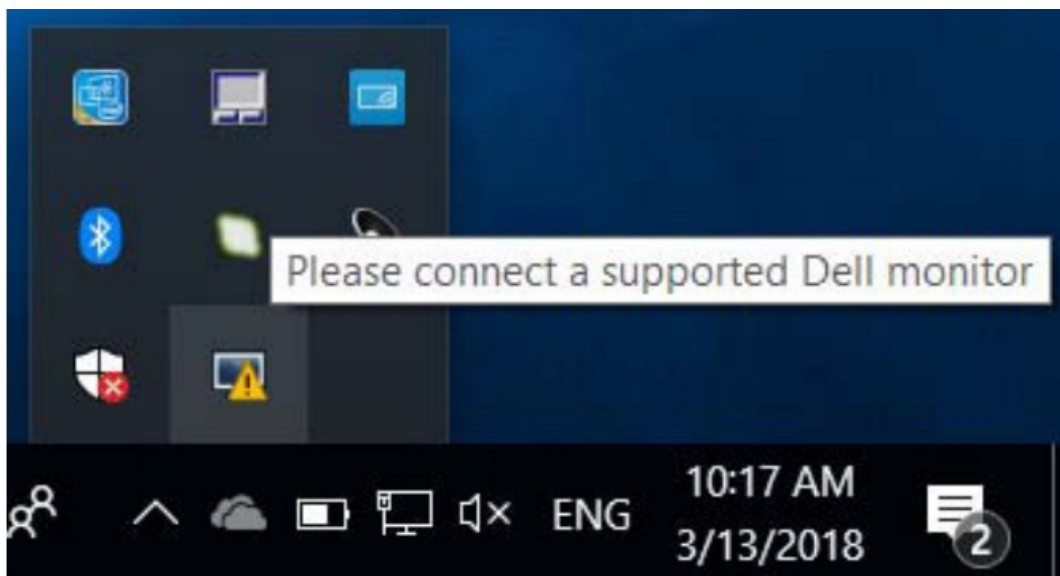
Applying Energy Conservation Features

- On supported Dell models, an Options tab is available that provides PowerNap energy conservation options.
- You can choose to set the monitor’s brightness to the minimum level or to put the monitor to sleep when the screensaver is activated.

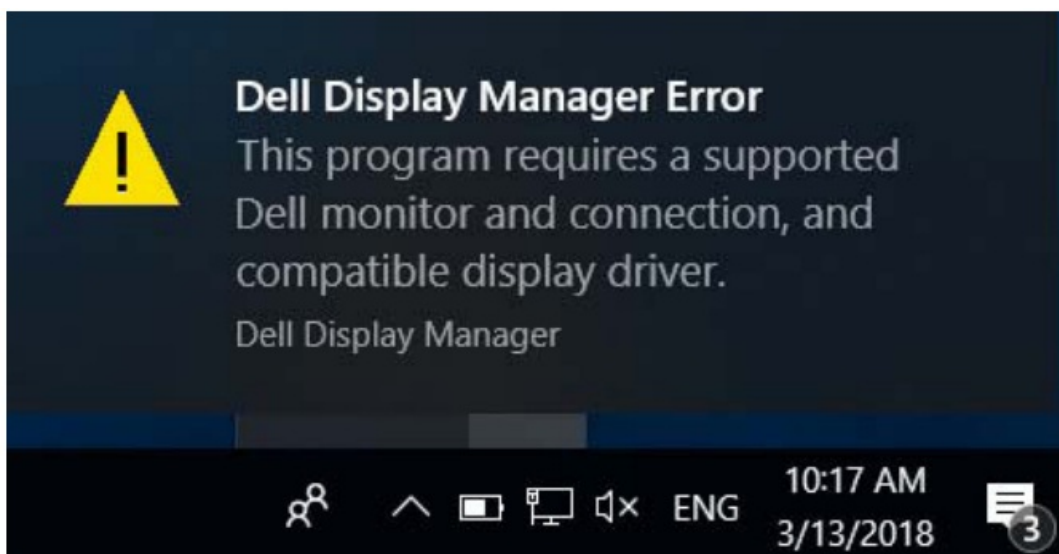


Troubleshooting

- If DDM cannot work with your monitor, DDM will show the below icon in your notification tray.



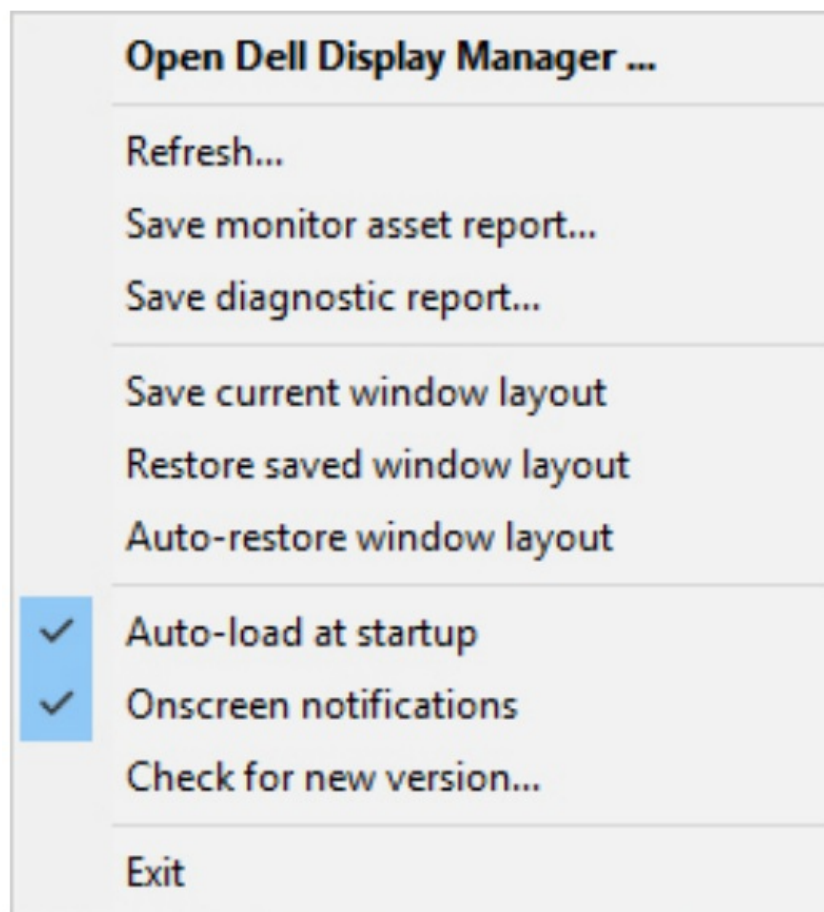
- Click on the icon, and DDM shows a more detailed error message.



- Please note that DDM only works with Dell-branded monitors. If you are using monitors from other manufacturers, DDM doesn't support them.
- If DDM is unable to detect and/or communicate with a supported Dell monitor, please take the below actions to troubleshoot:
 1. Make sure the video cable is properly connected to your monitor and your PC, especially the connectors should be firmly inserted into position.
 2. Check the monitor OSD to ensure DDC/CI is enabled.
 3. Make sure you have the correct and latest display driver from the graphics vendor (Intel, AMD, NVidia, etc.).
The display driver is often the cause of DDM failure.
 4. Remove any docking station cable extenders or converters between the monitor and the graphics port. Some low-cost extenders, hubs, or converters may not support DDC/CI properly and can fail.
 - Update the driver of such a device if the latest version is available.
 5. Restart your system.

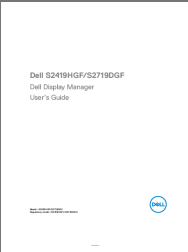
DDM may not work with below monitors:

- Dell monitor models earlier than the year 2013 and D-series of Dell monitors. You can refer to Dell Product Support websites for information
- Gaming monitors using Nvidia-based G-sync technology
- Virtual and wireless displays do not support DDC/CI
- For some early models of DP 1.2 monitors, it may be necessary to disable MST/DP 1.2 using the monitor OSD
If your PC is connected to the Internet, you will be prompted with a message when a newer version of the DDM application is available.
- It is recommended to download and install the latest DDM application.
- You may also check for a new version by right-clicking on the DDM icon while pressing and holding the 'shift' key.



- Copyright © 2018 Dell Inc. or its subsidiaries. All rights reserved. Dell, EMC, and other trademarks are trademarks of Dell Inc. or its subsidiaries.
- Other trademarks may be trademarks of their respective owners.

Documents / Resources

	<p>DELL S2419HGF Display Manager [pdf] User Guide S2419HGF Display Manager, S2419HGF, Display Manager, Manager</p>
---	--

References

-  [Manual-Hub.com - Free PDF manuals!](#)
- [User Manual](#)

Manuals+. Privacy Policy

This website is an independent publication and is neither affiliated with nor endorsed by any of the trademark owners. The "Bluetooth®" word mark and logos are registered trademarks owned by Bluetooth SIG, Inc. The "Wi-Fi®" word mark and logos are registered trademarks owned by the Wi-Fi Alliance. Any use of these marks on this website does not imply any affiliation with or endorsement.