

DELL P2425E LCD Monitor



DELL P2425E LCD Monitor Instruction Manual

[Home](#) » [Dell](#) » DELL P2425E LCD Monitor Instruction Manual 

Contents

- 1 DELL P2425E LCD Monitor
- 2 Specifications
- 3 Product Information
- 4 FAQs
- 5 WHAT IN BOX
- 6 UNPACKING
- 7 USING INSTRUCTION
- 8 MORE INFO
- 9 Documents / Resources
 - 9.1 References
- 10 Related Posts



DELL P2425E LCD Monitor



Specifications

Model	P2425E
Features	USB-C, KVM Switch, Daisy Chain Capability
Software	Dell Display Manager
Support Page	Dell.com/support/P2425E

Product Information

• Monitor Setup

- Connect the monitor stand to the monitor screen using the screws provided.
- Attach cables to their respective ports on the monitor.
- Ensure the monitor is securely attached to its base and adjust the viewing angle as desired.

• Connection Interfaces

- The monitor includes multiple USB-C ports for connectivity and supports daisy chaining for multi-monitor setups.

• Positioning Your Monitor

- **Incorrect Position:** Do not tilt the monitor too far forward or backward to avoid the risk of it falling over.
- **Correct Position:** Adjust the tilt within the recommended range to ensure stability and optimal viewing.

• Additional Features

- The Dell Display Manager enhances the functionality of the monitor, providing easy arrangement and management of multiple applications.

FAQs

- **How do I download the Dell Display Manager?**

- You can download the Dell Display Manager by visiting [Dell.com/DDM](https://dell.com/DDM).

What is the purpose of the USB-C ports on the monitor?

The USB-C ports are used for video connectivity, and data transfer, and can also charge connected devices.

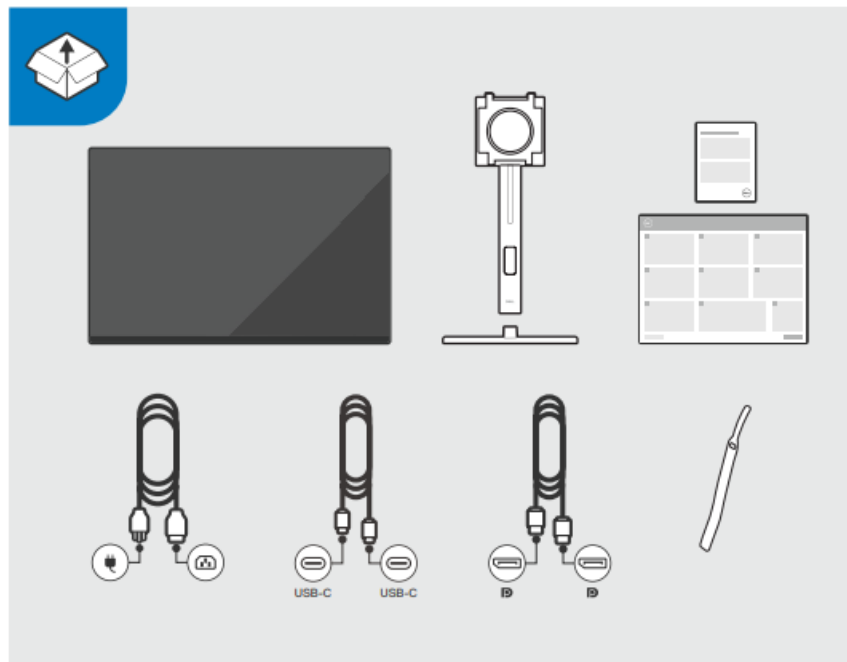
Can this monitor be daisy-chained with other monitors?

Yes, the P2425E model supports daisy chaining for extended displays.

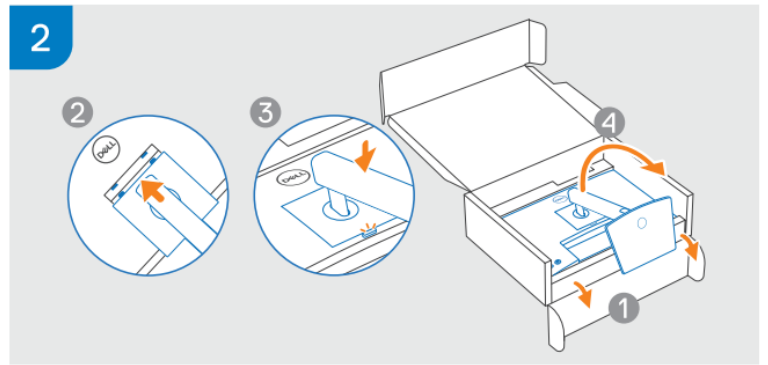
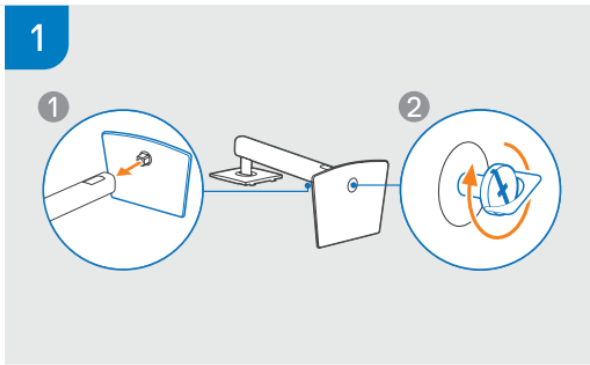
What is a KVM switch and how does it work with this monitor?

A KVM switch allows you to control multiple computers from a single monitor, keyboard, and mouse. This monitor has built-in KVM switch functionality.

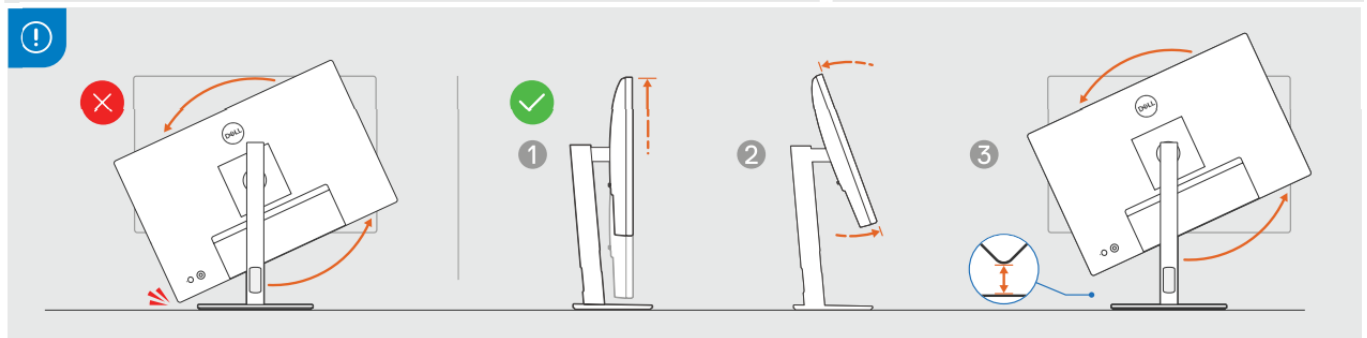
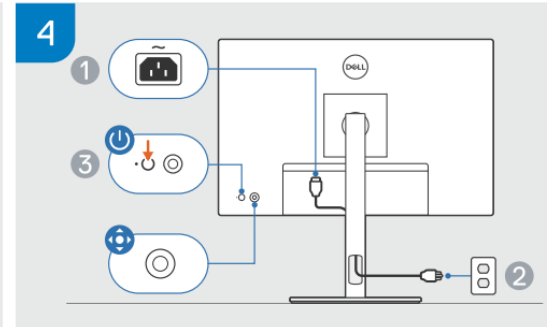
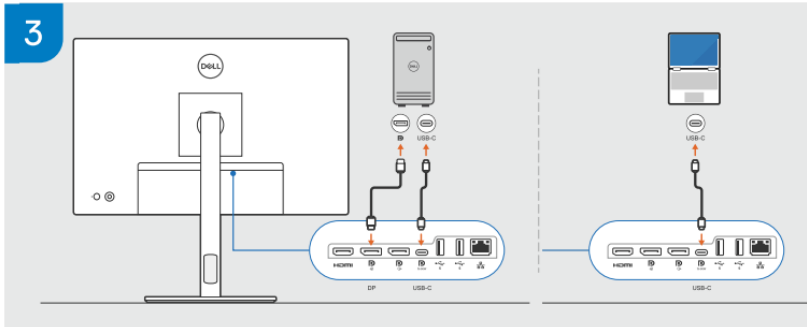
WHAT IN BOX



UNPACKING

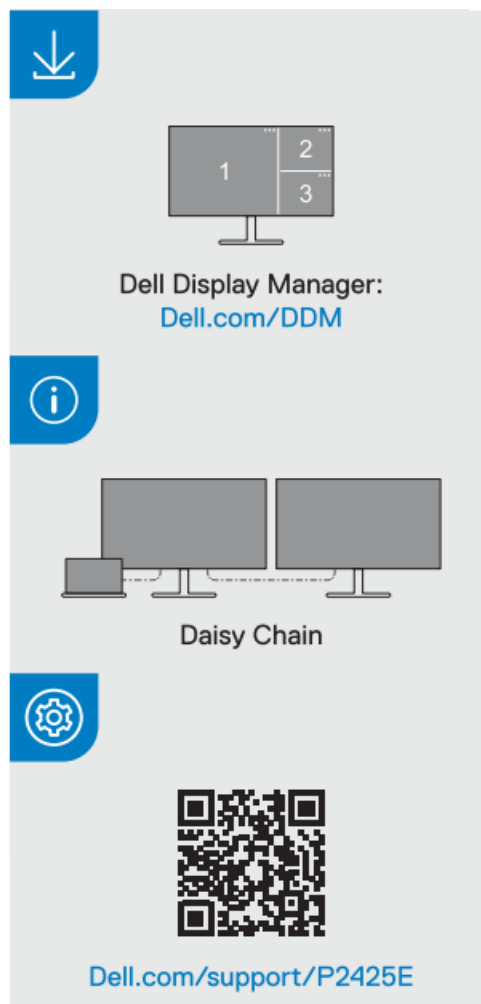


USING INSTRUCTION



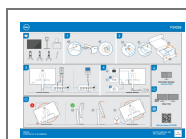
MORE INFO

- Dell Display Manager: [Dell.com/DDM](https://www.dell.com/ddm).
- [Dell.com/support/P245E](https://www.dell.com/support/P245E).



- **Dell P/N:** 2J6W1 Rev. A00
- **P/N:** 4J.66701.001

Documents / Resources



[DELL P2425E LCD Monitor](#) [pdf] Instruction Manual
P2425E, P2425E LCD Monitor, LCD Monitor, Monitor

References

- [User Manual](#)

[Manuals+](#), [Privacy Policy](#)

This website is an independent publication and is neither affiliated with nor endorsed by any of the trademark owners. The "Bluetooth®" word mark and logos are registered trademarks owned by Bluetooth SIG, Inc. The "Wi-Fi®" word mark and logos are registered trademarks owned by the Wi-Fi Alliance. Any use of these marks on this website does not imply any affiliation with or endorsement.