

DELL OpenManage Enterprise Version 3.0 Application User Guide

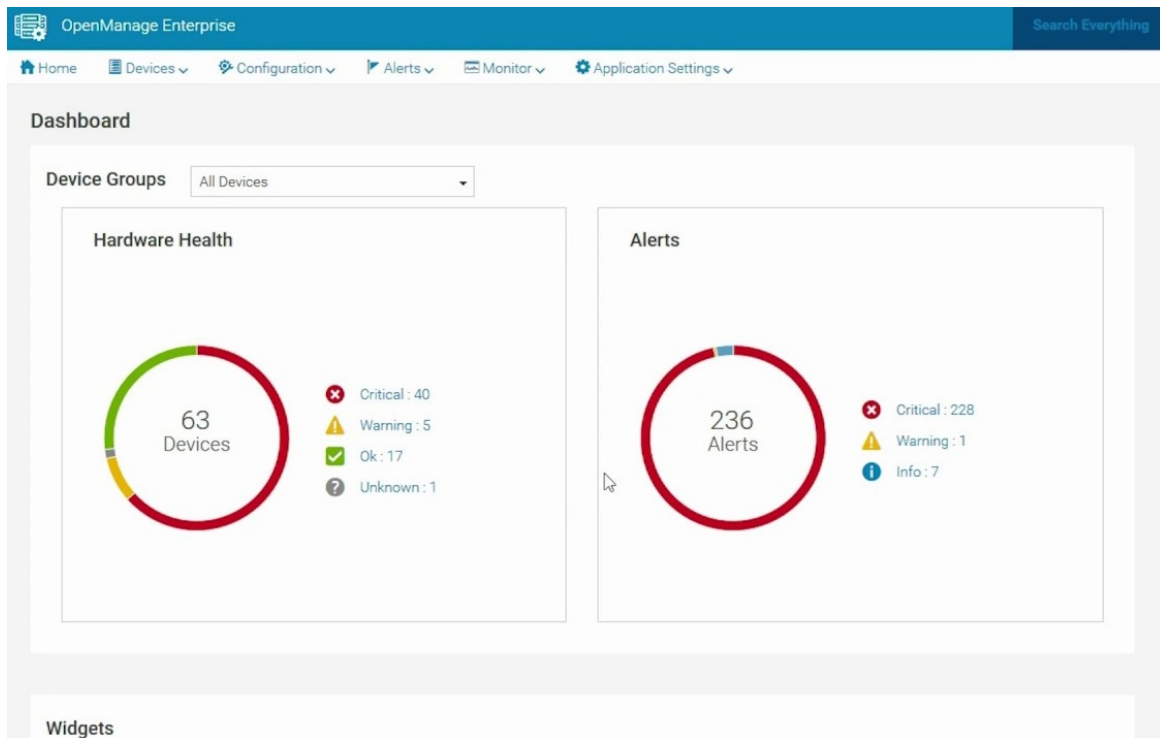
[Home](#) » [Dell](#) » [DELL OpenManage Enterprise Version 3.0 Application User Guide](#) 

Contents

- 1 [DELL OpenManage Enterprise Version 3.0 Application](#)
- 2 [Dell EMC OpenManage Enterprise Version 3.0](#)
- 3 [Supported Platforms](#)
- 4 [New Features in Release 3.0](#)
- 5 [Usage Instructions](#)
- 6 [Dell EMC OpenManage Enterprise Version 3.0 Release Notes](#)
 - 6.1 [Release type and definition](#)
 - 6.2 [Known issues](#)
- 7 [Installation](#)
- 8 [Contacting Dell](#)
- 9 [Documents / Resources](#)
 - 9.1 [References](#)
- 10 [Related Posts](#)



DELL OpenManage Enterprise Version 3.0 Application



Dell EMC OpenManage Enterprise Version 3.0

Dell EMC OpenManage Enterprise Version 3.0 is a software tool that provides a comprehensive view of the Dell EMC servers, chassis, network switches, storage devices, and other third-party devices connected to your network infrastructure. It simplifies the management and monitoring of your IT environment, allowing you to efficiently deploy, configure, and maintain your infrastructure from a single console.

Supported Platforms

- For a complete list of affected Dell EMC systems and supported operating systems, see the Dell EMC OpenManage Enterprise Version 3.0 Support Matrix at Delltechcenter.com/OMEnt or Dell.com/OpenManageManuals.
- For a complete list of supported devices, operating systems, and web browsers, see the Dell EMC OpenManage Enterprise Version 3.0 Support Matrix at Delltechcenter.com/OMEnt or Dell.com/OpenManageManuals.

New Features in Release 3.0

- You can now edit the deployment template attributes by using Guided view or Advanced view.
- Support for discovery and inventory of MX7000 chassis—as a standalone chassis and as a lead chassis in a Multi-Chassis Management (MCM) group.
- Support for configuration compliance and remediation of MX7000 chassis.
- Ability to assign virtual identities to servers and perform stateless deployment, and support for VLAN management.
- Ability to monitor devices and remediate tasks in Dell EMC OpenManage Mobile by integrating with OpenManage Enterprise.
- Dell EMC Repository Manager can generate firmware catalogs from the OpenManage Enterprise inventory.
- Support for the latest 14th generation PowerEdge servers including the new blade servers of MX7000 chassis,

PowerEdge FD332 storage module, and Dell Compellent FS8600 storage device.

- Support of alert policies for devices not discovered in OpenManage Enterprise.
- Support of additional remote tokens for remote script execution.
- REST API services for network configuration, identity pool creation, device template configuration, and profile management.

Usage Instructions

To use Dell EMC OpenManage Enterprise Version 3.0, follow these steps:

1. Ensure that your system meets the minimum hardware and software requirements as specified in the Dell EMC OpenManage Enterprise Version 3.0 Support Matrix.
2. Download and install the software on your server or workstation.
3. Launch the OpenManage Enterprise console using your web browser and log in using your credentials.
4. Discover and inventory your devices by navigating to the Discovery tab and adding the IP addresses or FQDNs of your devices.
5. Configure your devices by creating deployment templates, assigning virtual identities to servers, managing VLANs, and setting up compliance policies.
6. Monitor your devices by viewing their status, performance metrics, alerts, and event logs from the Devices tab.
7. Remediate issues by performing tasks such as firmware updates, configuration changes, and script executions from the Tasks tab.
8. Customize your console by creating dashboards, reports, and alert policies that match your business needs.

Note: For detailed usage instructions and troubleshooting tips, refer to the Dell EMC OpenManage Enterprise Version 3.0 User Guide and Knowledge Base at Delltechcenter.com/OMEnt or Dell.com/OpenManageManuals.

Topics:

- Dell EMC OpenManage Enterprise Version 3.0 Release Notes

Dell EMC OpenManage Enterprise Version 3.0 Release Notes

This document describes the new features, enhancements, and known issues in Dell EMC OpenManage Enterprise version 3.0.

Release type and definition

Dell EMC OpenManage Enterprise

OpenManage Enterprise is a systems management and monitoring application that provides a comprehensive view of the Dell EMC servers, chassis, storage, and network switches on the enterprise network. With OpenManage Enterprise, a web-based and one-to-many systems management application, you can:

- Discover and manage devices in a data center environment.
- Create and manage OpenManage Enterprise users.
- Group and manage devices.
- Monitor the health of your devices.

- Manage device firmware versions, and perform system updates and remote tasks.
- Create and deploy device configuration templates.
- Create and assign identity pools, and perform stateless deployment on target devices.
- Create configuration compliance baselines and remediate devices.
- View and manage system alerts and alert policies.
- View hardware inventory and compliance reports.
- Monitor and report about warranty and licenses.

Version

3.0

Release date

September 2018

Previous version

Tech Release

Importance

OPTIONAL: Dell EMC recommends the customer review specifics about the update to determine if it applies to your system. The update contains changes that impact only certain configurations, or provides new features that may/may not apply to your environment.

For the latest updates to the release notes, see Delltechcenter.com/OMEnt.

Platforms affected

For a complete list of affected Dell EMC systems and supported operating systems, see the Dell EMC OpenManage Enterprise Version 3.0 Support Matrix at Delltechcenter.com/OMEnt or Dell.com/OpenManageManuals.

What is supported

For a complete list of supported devices, operating systems, and web browsers, see the Dell EMC OpenManage Enterprise Version 3.0 Support Matrix at Delltechcenter.com/OMEnt or Dell.com/OpenManageManuals.

New in this release

- You can now edit the deployment template attributes by using:
 - Guided view
 - Advanced view
- Support for discovery and inventory of MX7000 chassis—as a standalone chassis and as a lead chassis in a Multi-Chassis Management (MCM) group.
- Support for configuration compliance and remediation of MX7000 chassis.
- Ability to assign virtual identities to servers and perform stateless deployment, and support for VLAN management.
- Ability to monitor devices and remediate tasks in Dell EMC OpenManage Mobile by integrating with OpenManage Enterprise.
- Dell EMC Repository Manager can generate firmware catalogs from the OpenManage Enterprise inventory.
- Support for the following devices:
 - Latest 14th generation PowerEdge servers including the new blade servers of MX7000 chassis
 - PowerEdge FD332 storage module

- Dell Compellent FS8600 storage device
- Support of alert policies for devices not discovered in OpenManage Enterprise.
- Support of additional remote tokens for remote script execution.
- REST API services for network configuration, identity pool creation, device template configuration, and profile management.

Limitations

- You can select a maximum of 25 devices per page to perform operations such as refresh inventory, refresh status, and add devices to groups on the All Devices page. [98194]

OpenManage Enterprise Version 3.0 Online Help Errata

- The online help uses OME as an acronym to refer to OpenManage Enterprise.

Known issues

Discovery and inventory

- Issue 1
Description: The management IP on the Device Details page of the discovered VxRail devices does not match the management IP displayed on the All Devices page. [91653]
- Issue 2
Description: If the onboarding state of the lead chassis and member chassis in an MCM group is in monitored state, the inventory task might fail if the MCM group is configured with more than 10 chassis. [108962]
- Issue 3
Description: The exported inventory file lists values for component status and URL of the chassis is not listed. [108056]

Tasks

- Issue 1
Description: After upgrading to the latest version of OpenManage Enterprise, the existing job IDs are changed. [108055]

Firmware updates

- Issue 1
Description: The Update Firmware button remains enabled even when there are no firmware catalogs available for upgrade or downgrade. [108218]
- Issue 2
Description: The firmware update jobs fail when multiple components of iDRAC (iDRAC 8 and earlier versions) are selected.
Resolution: Schedule a firmware update job for the components only after the iDRAC firmware update job is

successful.

[110008]

Configuration management

- Issue 1

Description: In OpenManage Enterprise version 3.0, the Reclaim Identities and Profile Migration features are not supported for Emulex OneConnect Cards. [98511]

- Issue 2

Description: If the MX7000 chassis is in the 'monitored' state during stateless deployment, the deployment job fails because the user does not have necessary privileges. Only the server configuration profile is imported. However, this information is not displayed in the Task Execution section. [108484]

- Issue 3

Description: In OpenManage Enterprise 3.0, the changed VLAN name and IDs are not updated on the target MX7000 chassis after a stateless deployment task is run. [105156]

- Issue 4

Description: If the IP setting is not configured on the discovered PowerEdge MX740C and PowerEdge MX840C, the Boot to Network ISO operation is not run during the template deployment. [102887]

- Issue 5

Description: After deploying an MX7000 chassis template, you cannot log in to the MX7000 chassis with LDAP credentials.

[107230]

Resolution: Manually update the LDAP bind password to log in.

- Issue 6

Description: The deployment task of an MX7000 chassis fails if proxy authentication is enabled in the configuration template with error: 'Unable to complete the request because the input value for Password is missing or an invalid value is entered'.

[108779]

- Issue 7

Description: The directory service details in an MX7000 chassis are overwritten after the device configuration template is deployed.

- Issue 8

Description: After a chassis is removed from the MCM group, you must rediscover the lead and member chassis to create and deploy a configuration template.

- Issue 9

Description: The Migration Profile task fails if the user is not configured on the target device with the error: 'User Name is not configured '. [107376]

Others

- Issue 1

Description: A query group with switch and device power state together is not working as expected. [86481]

Resolution: Exclude switch power state while creating a query group.

- Issue 2

Description: The management IP is incorrectly indicated if the server is discovered by using both the IPv4 and IPv6 addresses.[86196]

Resolution: Manually start the iDRAC Graphical User Interface (GUI).

- Issue 3

Description: The target IP address is incorrectly listed in the task history of an alert policy that is created by running a remote script. [86424]

Resolution: N/A

- Issue 4

Description: The 'Create template task' status changes from 'failed' to 'completed' when a device is deleted. [85795] Resolution: Recreate the template if the device is deleted.

- Issue 5

Description: Not all scheduled jobs are displayed in the Recent Tasks list. [86488]

Resolution: Go to the Jobs page to view the latest and complete list of jobs.

- Issue 6

Description: Discovery operation fails by using IPMI commands on the CISCO server if a KG key is used. [78545]

Resolution: KG key is not supported for this device discovery.

- Issue 7

Description: When a device is turned off, the console takes a few moments to display the updated health status. [86146] Resolution: Refresh the browser, or wait for a few moments.

- Issue 8

Description: An individual Chassis Management Controller (CMC) health may not be correctly displayed in the device drill-down operation. [85977]

Resolution: Always consider the CMC rollup health status.

- Issue 9

Description: Certain SNMP alerts are undefined for the S4810 networking switch. [85016]

Resolution: N/A

- Issue 10

Description: An unknown Error message occasionally displayed in the SNMP alert console. [84894]

Resolution: Ignore or click Dismiss.

- Issue 11

Description: In the SNMP alert console, some alerts from OMSA correctly show the Message ID field, while others show N/A.[83579]

Resolution: N/A

- Issue 12

Description: Discovery of an HP server by using IPMI command may not reflect the correct rollup health status. [85153] Resolution: View the lower-level sensor health data.

- Issue 13

Description: In the Execution Details section, data must be manually sorted in the table every time after moving to a new page. [81207]

Resolution: Sort information of a single page at a time.

- Issue 14

Description: Currently, the health status including PSU and temperature data is not displayed for the storage

devices. [99821] Resolution: N/A

- Issue 15

Description: : The rollback features is not supported on the MX7000 chassis. Also, the rollback operation fails on the M1000e, FX2, and FX2s chassis. [110239]

Resolution: For M1000e, FX2, and FX2s chassis, create and associate a new baseline with the necessary firmware version to roll back.

- Issue 16

Description: Currently, the alerts are not received by OpenManage Enterprise if the alerts are associated with the devices' IP address. However, alerts are successfully received when associated with the device Service Tag. [106369]

- Issue 17

Description: Invalid host names are displayed under the Source Name column and are also available for selection in some of the OpenManage Enterprise tasks. [68214]

- Issue 18

Description: In OpenManage Enterprise version 3.0, authentication by one-way and two-way trusts of AD users is not supported.

- Issue 19

Description: From the All Devices page, you cannot launch the iDRAC application interface with IPv6 addresses. [102153]

- Issue 20

Description: When PCIe cards are mapped to the FX2/FX2s chassis, migration of identities are not supported on the sleds in the same FX2s chassis since the FQDDs differ.

Installation

Dell EMC OpenManage Enterprise is provided as an appliance that you can deploy on a hypervisor and manage resources to minimize downtime. The virtual appliance can be configured from the application web console after initial network provisioning in the Text User Interface (TUI). For steps to view and update the console version, see the Dell EMC OpenManage Enterprise User's Guide on the support site.

NOTE: For information about supported browsers, see the OpenManage Enterprise Support Matrix available on the support site.

Installation prerequisites and minimum requirements

For a list of supported platforms, operating systems, and browsers, see the Dell EMC OpenManage Enterprise Version 3.0 Support Matrix on the support site and Dell TechCenter.

To install OpenManage Enterprise, you must have the local system administrator rights and the system you are using must meet the criteria. See the Dell EMC OpenManage Enterprise User's Guide on the support site and Dell TechCenter.

Recommended minimum hardware configuration for OpenManage Enterprise version 3.0:

Table 1. Minimum recommended hardware

Minimum recommended hardware	Large deployments	Small deployments
Number of devices that can be managed by the appliance	Up to 8000	1000
RAM	16 GB	16 GB
Processors	8 cores total	4 cores total
Hard drive	200 GB	20 GB

Minimum system requirements for deploying OpenManage Enterprise version 3.0

Table 2. Minimum requirements

Particulars	Minimum requirements
Supported hypervisors	<ul style="list-style-type: none"> • VMware vSphere versions: <ul style="list-style-type: none"> ◦ vSphere ESXi 6.5 ◦ vSphere ESXi 6.0 ◦ vSphere ESXi 5.5 • Microsoft Hyper-V supported on: <ul style="list-style-type: none"> ◦ Windows Server 2016 ◦ Windows Server 2012 R2 • KVM supported on: <ul style="list-style-type: none"> ◦ Red Hat Enterprise Linux 7.2 ◦ Red Hat Enterprise Linux 7.0 ◦ Red Hat Enterprise Linux 6.5
Network	Available virtual NIC which has access to the management networks of all the devices which is managed from OpenManage Enterprise.
Supported browsers	<ul style="list-style-type: none"> • Internet Explorer (64-bit) 11 and later • Mozilla Firefox 52 and later • Google Chrome 58 and later
User interface	HTML 5, JS based

NOTE: For the latest update about the minimum requirements for OpenManage Enterprise, see the Dell EMC OpenManage Enterprise Support Matrix on the support site.

Contacting Dell

NOTE: If you do not have an active internet connection, you can find contact information on your purchase invoice, packing slip, bill, or Dell product catalog.

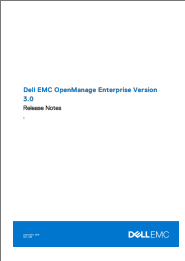
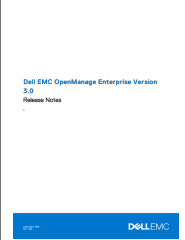
Dell provides several online and telephone-based support and service options. Availability varies by country and product, and some services may not be available in your area. To contact Dell for sales, technical support, or customer service issues:

1. Visit www.dell.com/support.
2. Select your support category.
3. Verify your country or region in the Choose a Country/Region drop-down list at the bottom of page.
4. Select the appropriate service or support link based on your need.

Copyright

© 2018 Dell Inc. or its subsidiaries. All rights reserved. Dell, EMC, and other trademarks are trademarks of Dell Inc. or its subsidiaries. Other trademarks may be trademarks of their respective owners.

Documents / Resources

	<p>DELL OpenManage Enterprise Version 3.0 Application [pdf] User Guide OpenManage Enterprise Version 3.0 Application, OpenManage Enterprise Version 3.0, Application, OpenManage Enterprise Application</p>
	<p>DELL OpenManage Enterprise Version [pdf] User Guide OpenManage Enterprise Version, Enterprise Version, Version</p>

References

- [DELL Support | Dell US](#)
- [Computers, Monitors & Technology Solutions | Dell USA](#)
- [DELL Support | Dell US](#)
- [DELL Support | Dell US](#)
- [DELL Support for Dell OpenManage Enterprise | Dell US](#)