

# DELL Command Monitor in Configuration Manager Installation Guide

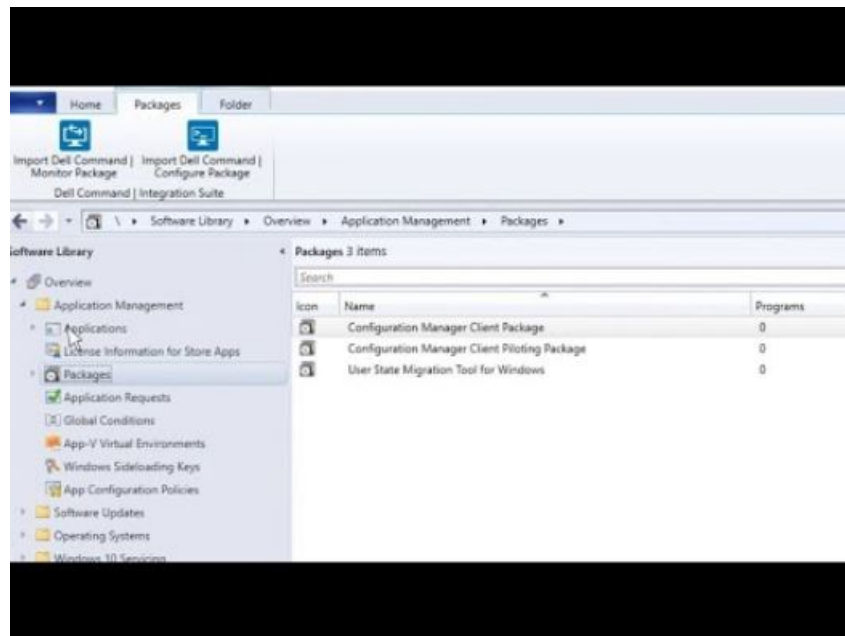
[Home](#) » [Dell](#) » DELL Command Monitor in Configuration Manager Installation Guide 

## Contents

- 1 [DELL Command Monitor in Configuration Manager](#)
- 2 [Introduction to Dell Command | Monitor 10.8](#)
- 3 [Hardware requirements](#)
- 4 [Prerequisites for Dell Edge Gateway systems](#)
- 5 [Installing Dell Command | Monitor using RPM package](#)
- 6 [Documents / Resources](#)
  - 6.1 [References](#)



**DELL Command Monitor in Configuration Manager**



### Notes, cautions, and warnings

**NOTE:** A NOTE indicates important information that helps you make better use of your product.

**CAUTION:** A CAUTION indicates either potential damage to hardware or loss of data and tells you how to avoid the problem.

**WARNING:** A WARNING indicates a potential for property damage, personal injury, or death.

© 2022 Dell Inc. or its subsidiaries. All rights reserved. Dell Technologies, Dell, and other trademarks are trademarks of Dell Inc. or its subsidiaries. Other trademarks may be trademarks of their respective owners.

## Introduction to Dell Command | Monitor 10.8

This guide provides instructions on how to install Dell Command | Monitor on Dell enterprise client systems and Dell IoT Gateway systems and Embedded PCs. For more information about supported systems, see the Release notes available at [dell.com/support](https://dell.com/support).

**NOTE:** Dell Command | Monitor was formerly Dell OpenManage Client Instrumentation (OMCI). After the OMCI version 8.2.1, OMCI was rebranded as Dell Command | Monitor.

### Topics

- Supported Windows operating systems
- Downloading Dell Command | Monitor

### Supported Windows operating systems

- Windows 11 21H2 – 22000
- Windows 10 19H1 – 18362
- Windows 10 19H2 – 18363
- Windows 10 20H1 – 19041
- Windows 10
- Windows 10 Pro
- Windows 10 Redstone 1 – 14393
- Windows 10 Redstone 2 – 15063
- Windows 10 Redstone 3 – 16299

- Windows 10 Redstone 5 – 17763
- Windows 10 Redstone 6 – 18317
- Windows 10 IoT Enterprise LTSC 2016 (64-bit) editions

**NOTE:** Windows 10 IoT Enterprise LTSC 2016 is supported only on Dell IoT Gateway systems and for Dell Embedded PCs.

### **Supported Linux operating systems**

- Red Hat Enterprise Linux (RHEL) 8.0 (64-bit)
- Red Hat Enterprise Linux (RHEL) 7.0 (64-bit)
- Ubuntu Desktop 16.04 (64-bit)
- Ubuntu Desktop 18.04 (64-bit)
- Ubuntu Server 18.04 (64-bit)
- Ubuntu Desktop 20.04 (64-bit)

### **Downloading Dell Command | Monitor**

1. Go to [dell.com/support](https://dell.com/support).
2. Click the Support tab, and under the Support by Product option, click Drivers & Downloads.
3. Enter the Service Tag or Express Service Code and click Submit.  
If you do not know the service tag, then click Detect My Product and follow the instructions on the screen.  
The Product Support page for your system type is displayed.
4. Click Drivers & downloads.
5. Expand the Systems Management category, and click the Download option for the Dell Command | Monitor file.
6. Click Save to complete the download.

### **System requirements for Dell Command**

- This section provides information about the hardware requirements of Dell Command | Monitor.

### **Hardware requirements**

- Supported enterprise client system with SMBIOS 2.3 or later
- Supported systems that are compatible with WMI-ACPI-compliant BIOS
- **NOTE:** For more information about the hardware requirements, see Supported Platforms.

### **Prerequisites for Dell Command | Monitor 10.8**

- Before installing Dell Command | Monitor, ensure that your system meets the following requirements.

### **Topics**

- Prerequisites for systems running on Windows
- Prerequisites for systems running on Linux

### Prerequisites for systems running on Windows

- Systems must be compatible with a WMI-ACPI-compliant BIOS. If a system does not have a WMI-ACPI compliant BIOS over which to install Dell Command | Monitor, update the BIOS with a compatible version. For more information, see the Dell Command | Monitor Release Notes.
- The target system is a Dell-manufactured system with System Management Basic Input Output System (SMBIOS) 2.3 or later. Otherwise, the Dell Command | Monitor installer exits without installing.

**NOTE:** To view the SMBIOS version of the system, choose any one of the following methods:

- Go to Start > Run, and run the msinfo32.exe file. Check for the SMBIOS version on the System Summary page.
- Run the following commands:

```
Get-CimInstance Win32_BIOS | select SMBIOSMajorVersion  
Get-CimInstance Win32_BIOS | select SMBIOSMinorVersion
```

- The system is running a supported Windows operating system. For more information, on supported Windows operating systems, see Supported operating systems.
- NET Framework 4.6.1 or later is installed.
- You have administrative privileges on the client system. This means that you must be authenticated on the client system as a user who is a member of the Administrators group, typically the Administrator.
- Microsoft Visual C++ Redistributable for Visual Studio 2019.

### Prerequisites for systems running on Linux

- The system is a Dell-manufactured system with System Management Basic Input Output System (SMBIOS) 2.3 or later.

**NOTE:** To view the SMBIOS version of the system running Ubuntu Desktop, run the following command:

```
dmidecode -t
```

- The system is running on a supported Linux operating system. For more information, on supported Linux operating systems, see Supported operating systems.
- Open Management Infrastructure (OMI) 1.6.8-0.ssl\_100 is installed for Ubuntu Desktop 16.04 (64-bit) or Red Hat Enterprise Linux 7.0; and Open Management Infrastructure (OMI) 1.6.8-0.ssl\_110 is installed for Ubuntu Server/Desktop 18.04, Ubuntu Desktop 20.04, and RHEL-8.
- The HAPI client-side shared libraries are installed with the respective version.
- libxml2 should be installed.
- You have root access to the target system. This means that you must be authenticated on the target system as

a user who is a member of the root user group.

## Prerequisites for Dell Edge Gateway systems

- Active Dell EDM subscription. Go to [cloudclientmanager.com](https://cloudclientmanager.com) and click Trial and Licensing for more details on subscriptions.
- EDM agent must be installed to discover the features offered by Dell Command | Monitor.

**NOTE:** You must install Dell Command | Monitor before installing the EDM agent for EDM to manage the parameters exposed by Dell Command | Monitor. If Dell Command | Monitor is installed after the EDM agent, these parameters are not displayed on the EDM server portal until the EDM agent performs the next periodic check-in, or EDM is restarted.

## Installing Dell Command | Monitor 10.8 for systems running on Windows

- You can install Dell Command | Monitor using one of the following methods:
- Using the Graphical User Interface, also known as the Dell Command | Monitor installation wizard
- Using Command Line Interface (CLI) for Silent Installation
- **NOTE:** The Dell Command | Monitor installation file is available as a Dell Update Package (DUP) at [dell.com/support](https://dell.com/support). For more information, see Downloading Dell Command | Monitor.
- **NOTE:** The Dell Command | Monitor installation file is available as a Dell Update Package (DUP) at [dell.com/support](https://dell.com/support).

## User interface Installation

- You can install Dell Command | Monitor using a DUP, or MSI file extracted from the DUP. The Dell Command | Monitor installation wizard allows you to install the default package or perform a custom installation of specific components that are required for a particular environment.

## Silent or CLI Installation

- You can install Dell Command | Monitor using a software distribution tool such as Microsoft System Center Configuration Manager (SCCM), with no end-user interaction.
- You can use the MSI file or DUP to deploy Dell Command | Monitor to client systems on a network by using a login script or Windows system policies.
- In the default installation mode, Dell Command | Monitor installs the Windows Management Instrumentation (WMI) provider, two services, and a driver. WMI uses the Communication port (COM) as the communication interface with providers. The services that are installed with Dell
- Command | Monitor provides access to the system for events and data retrieval. The driver that is installed with Dell Command | Monitor enables secure communication with the BIOS and other low-level system resources.

**NOTE:** Dell Command | Monitor does not support any type of remote access. Remote access to Dell Command | Monitor is achieved using the remote-access protocols that are supported by WMI.

**NOTE:** Input driver is installed to enable the configuration of GPIO pins using Dell Command | Monitor on Dell Embedded Box PC 3000/5000 devices

## Topics

- Installing Dell Command | Monitor using Dell Update Package
- Installing Dell Command | Monitor using the MSI file
- Installing Dell Command | Monitor in CLI or silent mode

### Installing Dell Command | Monitor using Dell Update Package

Perform the following steps to install Dell Command | Monitor locally using the DUP.

1. Double-click the Dell Command | Monitor Update Package you downloaded from [dell.com/support](https://dell.com/support).  
The User Account Control (UAC) screen is displayed.
2. Double-click the Dell Command | Monitor Update Package.  
The User Account Control (UAC) screen is displayed.
3. Click Yes.  
The Update Package screen is displayed.
4. Click Install.  
The Welcome to the InstallShield Wizard for Dell Command | Monitor screen is displayed.
5. Click Next. The License Agreement screen is displayed.
6. Read the software license agreement, select I accept the terms in the license agreement, and then click Next.  
The Improvement Program Consent screen is displayed.
7. Read the Improvement Program Consent, select the appropriate option based on the preferences to participate in the program, and then click Next.  
**NOTE:** Improvement Program is available for DCM 10.8 x 64-bit version only.
8. Click Next.  
The Ready to Install the Program screen is displayed. If the Setup Type is Custom, then the Custom Setup screen is displayed, allowing you to select specific program features and the directory in which you want to install Dell Command | Monitor. Click Next.
9. Click Install.  
The installation starts. The time taken for the installation to complete depends on the options that are selected and the system hardware.
10. In the InstallShield Wizard Completed, click Finish.  
The Dell Command | Monitor screen is displayed.
11. Click Close to complete the installation and exit the installation screen.

### Installing Dell Command | Monitor using the MSI file

- You can perform a local installation using the MSI. Download the Dell Command | Monitor DUP from [dell.com/support](https://dell.com/support) to your local directory and extract the MSI file from the DUP.
- You can also get the installation file from your service provider and extract the MSI file.
- The installation file contains the components for English, French, German, Italian, Spanish, Simplified Chinese, Japanese, Chinese Hong Kong, Traditional Chinese, and Dutch languages.

**NOTE:** You must have Administrator privileges before running the MSI file.

1. Open the Command Line Interface with administrator privileges, and browse the file location. Run Command\_Monitor\_x86.msi or Command\_Monitor\_x64.msi file.  
The Welcome to the InstallShield Wizard for Dell Command | Monitor screen is displayed.
2. Click Next.  
The License Agreement screen is displayed.
3. Read the software license agreement, select I accept the terms in the license agreement, and then click Next.
4. Read the Improvement Program Consent, select the appropriate option based on the preferences to participate in the program, and then click Next.  
**NOTE:** Improvement Program is available for DCM 10.8 x 64-bit version only.
5. Click Next.  
The Ready to Install the Program screen is displayed. If the Setup Type is Custom, then the Custom Setup screen is displayed, allowing you to select specific program features and the directory in which you want to install Dell Command | Monitor. Click Next.
6. Click Install.  
The installation starts. The time taken for the installation to complete depends on the options that are selected and the system hardware.
7. In the InstallShield Wizard Completed, click Finish.  
The Dell Command | Monitor screen is displayed.
8. Click Close to complete the installation and exit the installation screen.

### Installing Dell Command | Monitor in CLI or silent mode

You can perform a silent or CLI installation of Dell Command | Monitor using a DUP or MSI file.

**Table 1. Commands for installation**

Operation	Command	Example and Comments
Silent installation using DUP	<p>To install Dell Command   Monitor in silent mode using the default settings, run the DUP file with the /S option. This installs Dell Command   Monitor to the default directory and in the default supported operating system language. For 32-bit systems, type: Systems-</p> <p>Management_Application_XXXXX_WIN32_&lt;version number&gt;_&lt;revision number&gt;.EXE /s</p> <p>For 64-bit systems, type: Systems-</p> <p>Management_Application_XXXXX_WIN32_&lt;version number&gt;_&lt;revision number&gt;.EXE /s</p>	Only users with Administrator privileges can install or uninstall Dell Command   Monitor.

Silent or unattended installation	For 32-bit systems, type: <code>msiexec/i Command_Monitor_x86.msi /qn</code> For 64-bit systems, type: <code>msiexec/i Command_Monitor_x64.msi /qn</code>	For 32-bit Windows, use <code>&lt;Command_Monitor_x86.msi&gt;</code> . For 64-bit Windows, use <code>&lt;Command_Monitor_x64.msi&gt;</code>
Silent or unattended installation with Standard Namespaces	<code>msiexec/i Command_Monitor_&lt;x86 or x64&gt;.msi ADDLOCAL=Core,Hapi /qn</code>	Supported ADDLOCAL Parameters: <ul style="list-style-type: none"> <li>Core, Hapi</li> </ul>
Attended installation with supported languages	<code>msiexec /i Command_Monitor_&lt;x86 or x64&gt;.msi TRANSFORMS=1036.mst</code>	To specify the installation language, use the command line option, <code>TRANSFORMS=&lt;language ID&gt; .mst</code> , where <code>&lt;language ID&gt;</code> is <ul style="list-style-type: none"> <li>1028 — Chinese Taiwan</li> <li>1031 — German</li> <li>1033 — English</li> <li>1034 — Spanish</li> <li>1036 — French</li> <li>1040 — Italian</li> <li>1041 — Japanese</li> <li>1043 — Dutch Netherlands</li> <li>2052 Simplified Chinese</li> <li>3076 — Chinese Hong Kong</li> </ul> <p>If the installation language is not specified, the installer selects the default operating system language, or English if the default operating system language is not supported.</p>
Silent or unattended	<code>msiexec /i Command_Monitor_&lt;x64&gt;.msi</code>	Where <code>&lt;destination&gt;</code> is



installation to custom	INSTALLDIR=<destination>/qn	the custom directory. And
directory		the INSTALLDIR must
		be in uppercase. For
		example, msixexec /i
		Command_Monitor_<x86 or
		x64>.msi INSTALLDIR=c:
		\destination
Silent or unattended	msixexec /i Command_Monitor_<x64>.msi	To specify user consent for
installation with	USERTELEMETRYCONSENT=1/qn	Improvement program
consent for		USERTELEMETRYCONSENT
		subcommand has to be used. 0 –

Operation	Command	Example and Comments
Improvement Program		<p>No, I don't want to participate in the program. This is the default value in case USERTELEMETRYCONSENT is not passed. 1 – Yes, I want to participate in the program. To read more about the Customer Experience Improvement Program, see <a href="https://dell.com/manuals/all-products/esuprt_software_int/esuprt_software_client_systems_mgmt/command-monitor-v102_reference-guide2_en-us.pdf">https://dell.com/manuals/all-products/esuprt_software_int/esuprt_software_client_systems_mgmt/command-monitor-v102_reference-guide2_en-us.pdf</a></p>

## Installing Dell Command | Monitor 10.8 for systems running on Linux

- You can install Dell Command | Monitor on a system running Linux using one of the following methods:
- For systems running Ubuntu Desktop, see Installing Dell Command | Monitor using the Deb package.
- For systems running Red Hat Enterprise Linux (RHEL), see Installing Dell Command | Monitor using the RPM package.

### Topics

- Installing Dell Command | Monitor using Deb Package
- Installing Dell Command | Monitor using RPM package

### Installing Dell Command | Monitor using Deb Package

You can install Dell Command | Monitor in systems running the Ubuntu Desktop operating system using the Deb package that is downloaded from [dell.com/support](https://dell.com/support). See Downloading Dell Command | Monitor.

- In the Linux command-line interface, run the following command to extract contents from command-monitor\_<version number>-<build number>.<architecture>.tar.gz.

```
tar -zxvf command_monitor-linux-<Version>-<build number>.<Ubuntu Version>_<architecture>.tar.gz
```

- command\_monitor-linux-<version number>-<build number><Ubuntu Version>\_<architecture>.tar.gz contains the following packages that must be installed in the following order:
- omi-1.6.8-0.ssl\_100.ulinux.x64.deb for Ubuntu 16.04 or omi-1.6.8-0.ssl\_110.ulinux.x64.deb for other Ubuntu versions
- srvadmin-hapi\_<version number>\_amd64.deb
- command-monitor\_<version number>-<build number>.<Ubuntu Version>\_<architecture>.deb
- To install Open Manage Infrastructure, run

```
dpkg -i omi-<version number>.ssl_<OpenSSL version>.x64.deb
```

**NOTE:** If the installation fails due to dependency problems, run the following command to install all dependent packages from the Ubuntu repository:

```
apt-get -f install
```

**NOTE:** For Ubuntu 18.04/20.04 server or desktop, install omi-1.6.8-0.ssl\_110.ulinux.x64.deb.

- To install HAPI, run

```
srvadmin-hapi_<version number>_amd64.deb
```

**NOTE:** If the installation fails due to dependency problems, run the following command to install all dependent packages from the Ubuntu repository:

```
apt-get -f install
```

- To verify that the driver module is loaded, run

```
lsmod | grep dcdbas  
lsmod | grep dell_smbios
```

**NOTE:** If the driver module is not available,

- Retrieve the driver details by running

```
modinfo dcdbas  
modinfo dell_smbios
```

- Load the driver module by running

```
modprobe dcdbas  
modprobe dell_smbios
```

- To install Dell Command | Monitor, run

```
dpkg -i command-monitor_<version number>-<build number>.<Ubuntu  
Version>_<architecture>.deb
```

- To verify that the Dell Command | Monitor is installed in your system, run.

```
dpkg -l | grep command-monitor
```

If Dell Command | Monitor details are displayed, and then the installation is successful.

## Installing Dell Command | Monitor using RPM package

- You can install Dell Command | Monitor in systems running the RHEL operating system using the RPM package downloaded from [dell.com/support](https://dell.com/support). See Downloading Dell Command | Monitor.
- In the Linux command-line interface, run the following command to extract contents from command-monitor-  
<version number>-<build number>.<RHEL Version><architecture>.tar.gz.

```
tar -zxvf command_monitor-<Version>-<build number>.<RHEL  
Version>.<architecture>.tar.gz
```

- command\_monitor-<version number>-<build number>.<RHEL Version>.<architecture>.tar.gz contains the following packages that must be installed in the following order as a root user:

- omi-1.6.8-0.ssl\_100.ulinux.x64.rpm for RHEL 7 or omi-1.6.8-0.ssl\_110.ulinux.x64.rpm for other RHEL versions
- srvadmin-hapi\_<version number>\_amd64.rpm
- command-monitor-<version number>-<build number>.<RHEL Version>\_<architecture>.rpm
- To install OMI, run

```
rpm -ivh omi-<version number>.ssl_<OpenSSL version>.x64.rpm
```

**NOTE:** You must install omi-1.6.8-0.ssl\_110.ulinux.x64.rpm for RHEL-8.

- To install HAPI, run

```
rpm -ivh srvadmin-hapi-<version number>-3379.14516.el7.x86_64.rpm
```

- To install Dell Command | Monitor, run

```
command-monitor-linux-<Version number>-<build number>.<RHEL Version>_<architecture>.rpm
```

- To verify that the Dell Command | Monitor is installed in your system, run

```
rpm -qa | grep command-monitor-linux
```

- If Dell Command | Monitor details are displayed, and then the installation is successful.

## Upgrading Dell Command | Monitor 10.8 for systems running on Windows

- You can upgrade Dell Command | Monitor on a system running Windows using one of the following methods:
- Using DUP, see Upgrading Dell Command | Monitor using DUP
- Using the MSI file, see Upgrading Dell Command | Monitor using the MSI file
- Using CLI, see Upgrading Dell Command | Monitor in CLI or silent mode

**NOTE:** Only users with Administrator privileges can install, upgrade, or uninstall Dell Command | Monitor.

## Topics

- Upgrading Dell Command | Monitor using DUP
- Upgrading Dell Command | Monitor using the MSI file
- Upgrading Dell Command | Monitor in CLI or silent mode

## Upgrading Dell Command | Monitor using DUP

To upgrade Dell Command | Monitor using DUP,

1. Double-click the downloaded Dell Command | Monitor DUP.

The User Account Control screen is displayed.

2. Click Yes.

The Update Package screen is displayed.

3. Click INSTALL.

4. Follow the instructions on the screen to complete the upgrade.

**NOTE:** When Dell Command | Monitor is upgraded to the latest version, the compatibility mode is installed by default.

5. Restart your computer to complete the upgrade.

### Upgrading Dell Command | Monitor using the MSI file

To upgrade Dell Command | Monitor using the MSI file:

1. Double-click the MSI file.
2. Follow the instructions on the screen to upgrade the application.

To upgrade the Dell Command | Monitor by using CLI with admin privileges, then type the following command:

- For 32-bit operating systems:

```
msiexec /i Command_Monitor_x86.msi REINSTALL=All REINSTALLMODE=vomus
```

- For 64-bit operating systems:

```
msiexec /i Command_Monitor_X64.msi REINSTALL=All REINSTALLMODE=vomus
```

### Upgrading Dell Command | Monitor in CLI or silent mode

You can upgrade from the previous version of Dell Command | Monitor using CLI without restarting the system.

**Table 2. Commands used for upgrade**

Operation	Command
Upgrade from previous version (major upgrade)	msiexec /i Command_Monitor_<x86 or x64>.msi REINSTALL=ALL REINSTALLMODE=vmous /qn
To upgrade without reboot	msiexec /i Command_Monitor_<x86 or x64>.msi REINSTALL=ALL REINSTALLMODE=vmous REBOOT=REALLYSUPPRESS /qn

### Upgrading Dell Command | Monitor 10.8 for systems running on Linux

- You can upgrade Dell Command | Monitor on a system running Linux using one of the following methods:
- For systems running Ubuntu Desktop operating system, see Upgrading Dell Command | Monitor using Deb

package.

- For systems running Red Hat Enterprise Linux (RHEL), Upgrading Dell Command | Monitor running Redhat Linux using rpm package.

## Topics

- Upgrading Dell Command | Monitor using Deb Package
- Upgrading Dell Command | Monitor running Redhat Linux using an RPM package

### Upgrading Dell Command | Monitor using Deb Package

To upgrade Dell Command | Monitor running Ubuntu Desktop using Deb package,

- To upgrade Dell Command | Monitor, run

```
dpkg -i command-monitor_<version number>-<build number>.<Ubuntu Version>_<architecture>.deb
```

- To verify that the Dell Command | Monitor is installed in your system, run the following command and verify the version number.

```
dpkg -l | grep command-monitor
```

### Upgrading Dell Command | Monitor running Redhat Linux using an RPM package

To upgrade Dell Command | Monitor running Redhat Linux using an RPM package,

1. To upgrade Dell Command | Monitor, run.

```
rpm -Uvh command-monitor-<version number>-<build number>.<RHEL Version>_<architecture>.rpm
```

2. To verify that the Dell Command | Monitor is installed in your system, run the following command and verify the version number.

```
rpm -qa | grep command-monitor
```

### Uninstalling Dell Command | Monitor 10.8 for systems running on Windows

You can uninstall Dell Command | Monitor from systems running Windows using one of the following methods:

- Uninstalling Dell Command | Monitor using control panel
- Uninstalling Dell Command | Monitor using the MSI file
- Uninstalling Dell Command | Monitor in CLI or silent mode

## Topics

- Uninstalling Dell Command | Monitor using control panel
- Uninstalling Dell Command | Monitor using the MSI file
- Uninstalling Dell Command | Monitor in CLI or silent mode

## Uninstalling Dell Command | Monitor using control panel

1. Go to Start > Settings > Apps > Apps and Features.
2. Select Add/Remove Programs.

The Add/Remove Programs screen is displayed.

**NOTE:** On systems running Windows 7, Windows 8, and Windows 8.1 operating systems, use the Programs and Features option to uninstall Dell Command | Monitor.

3. Double-click Dell Command | Monitor to start the uninstallation process.
4. Follow the instructions on the screen to complete the uninstallation.

## Uninstalling Dell Command | Monitor using the MSI file

1. Right-click the MSI file, and click Run as administrator.
  - For 32-bit operating systems, select Command\_Monitor\_x86.msi
  - For 64-bit operating systems, select Command\_Monitor\_X64.msi
2. In the Welcome to the InstallShield Wizard for Dell Command | Monitor, click Next.
3. In the Program Maintenance, select Remove and then click Next.
4. In the confirmation screen, click Yes.
5. In the InstallShield Wizard Complete screen, click Finish to complete the uninstallation and close the screen.

## Uninstalling Dell Command | Monitor in CLI or silent mode

You can uninstall Dell Command | Monitor in silent mode either using or without using the MSI file.

**NOTE:** Only users with Administrator privileges can install or uninstall Dell Command | Monitor.

**Table 3. Commands for uninstallation**

Operation	Command
Remove Dell Command   Monitor using MSI	msiexec /x Command_Monitor_<x86 or x64>.msi /qn
Remove Dell Command   Monitor using upgrade code	For 64-bit Windows operating systems, type: msiexec /x {91E79414- DB41-4030-9 A13-E133EE30F1D5} /qn

## Uninstalling Dell Command | Monitor 10.8 for systems running on Linux

- You can uninstall Dell Command | Monitor from a system running Linux using one of the following methods:
- For systems running Ubuntu Desktop, see Uninstalling Dell Command | Monitor using Deb Package
- For systems running Red Hat Enterprise Linux (RHEL), see Uninstalling Dell Command | Monitor using RPM Package.

## Topics

- Uninstalling Dell Command | Monitor using Deb Package
- Uninstalling Dell Command | Monitor using an RPM package

### Uninstalling Dell Command | Monitor using Deb Package

You can uninstall Dell Command | Monitor and dependent packages using Deb package.

**NOTE:** You must uninstall Dell Command | Monitor before uninstalling the dependent packages.

1. To uninstall Dell Command | Monitor and remove configuration files and temporary files, run

```
dpkg --purge command-monitor
```

2. To uninstall Hapi and remove configuration files as well as temporary files, run

```
dpkg --purge srvadmin-hapi
```

3. To uninstall OMI and remove configuration files as well as temporary files, run

```
dpkg --purge omi
```

4. To verify that the Dell Command | Monitor is uninstalled in your system, run

```
dpkg -l | grep command-monitor
```

If Dell Command | Monitor details are not displayed, then the uninstallation is successful.

### Uninstalling Dell Command | Monitor using an RPM package

You can uninstall Dell Command | Monitor and dependent packages using .rpm package.

**NOTE:** You must uninstall Dell Command | Monitor before uninstalling the dependent packages.

1. To uninstall Dell Command | Monitor and remove configuration files and temporary files, run

```
rpm -e command-monitor
```

2. To uninstall Hapi and remove configuration files and temporary files, run

```
rpm -e srvadmin-hapi
```

3. To uninstall OMI and remove configuration files and temporary files, run

```
rpm -e omi
```

4. To verify that Dell Command | Monitor is uninstalled in your system, run

```
rpm -qa | grep command-monitor
```

---

## Documents / Resources



<div><div><div>Dell Command   Monitor</div><div>Version 5.0 Installation Guide</div></div><div><div>02</div><div></div></div></div>	<div><div><b>DELL Command Monitor in Configuration Manager</b> [pdf] Installation Guide</div><div>Command Monitor in Configuration Manager, Monitor in Configuration Manager, Configuration Manager, Manager</div></div>
---	--

References

- DELL

[Wyse Management Suite](#)
- DELL

[Sign In | Dell US](#)
- DELL

[User Manual](#)