


DELLTechnologies
S2725QC 27
Plus 4K USB-C
Monitor



DELL Technology S2725QC 27 Plus 4K USB-C Monitor User Guide

[Home](#) » [DELL Technology](#) » DELL Technology S2725QC 27 Plus 4K USB-C Monitor User Guide 

Contents

- [1 DELL Technology S2725QC 27 Plus 4K USB-C Monitor](#)
- [2 Product Information](#)
- [3 Product Usage Instructions](#)
- [4 BOX CONTENT](#)
- [5 INSTALLATION AND CONNECTION INSTRUCTION](#)
- [6 MORE INFORMATION](#)
- [7 Frequently Asked Questions \(FAQ\)](#)
- [8 Documents / Resources](#)
 - [8.1 References](#)
- [9 Related Posts](#)

DELLTechnologies

DELL Technology S2725QC 27 Plus 4K USB-C Monitor



Product Information

Specifications:

- **Product Name:** Dell 27 Plus 4K USB-C Monitor S2725QC
- **Brand:** Dell
- **Support Website:** [Dell Support](#)

Product Usage Instructions

Setting Up the Monitor:

1. Connect the monitor to a power source using the provided power cable.
2. Connect your computer or laptop to the monitor using the USB-C cable for optimal performance.

Adjusting Display Settings:

1. Use the buttons on the monitor to access the on-screen display (OSD) menu.
2. Navigate through the OSD menu to adjust settings such as brightness, contrast, color temperature, and more.

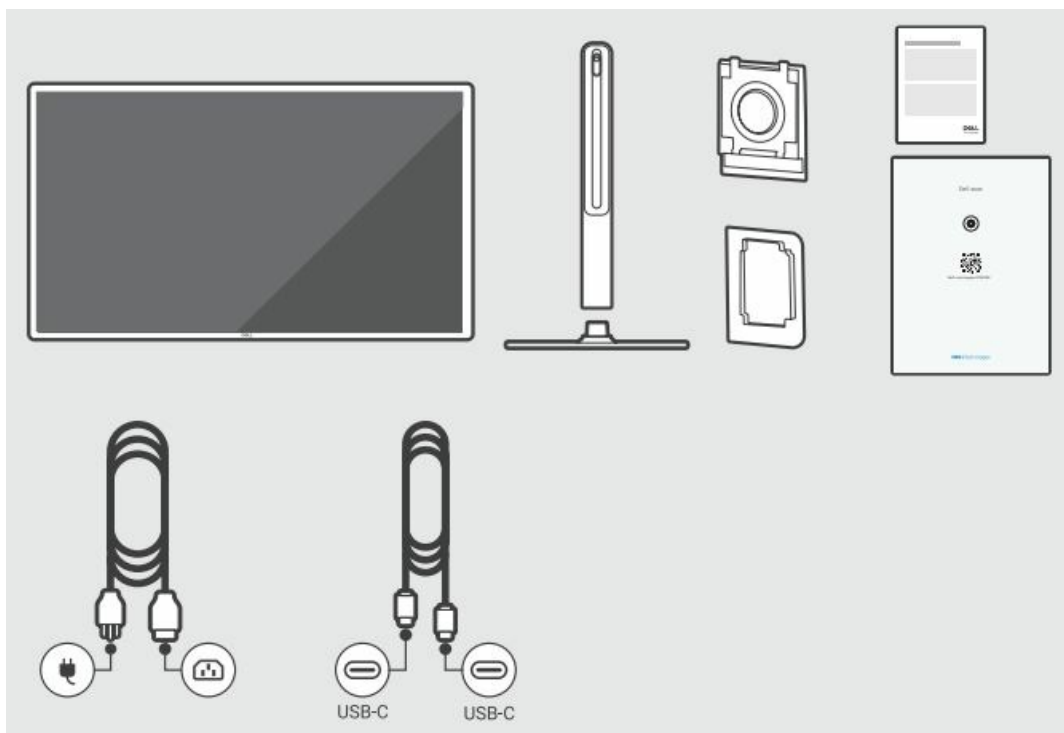
Using Dell Display and Peripheral Manager:

Visit [Dell Display and Peripheral Manager](#) for additional software support.

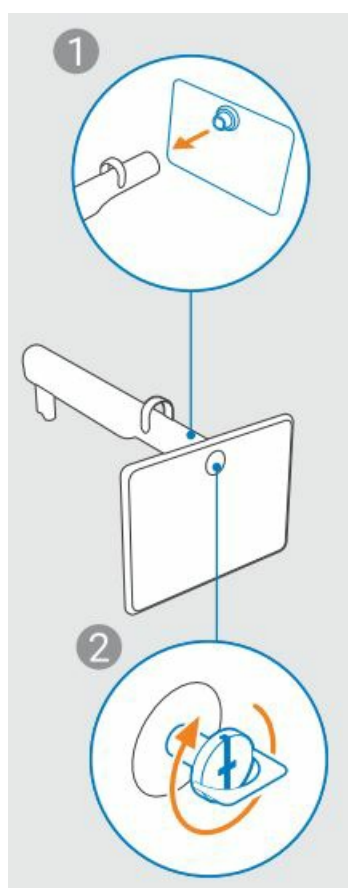
Troubleshooting:

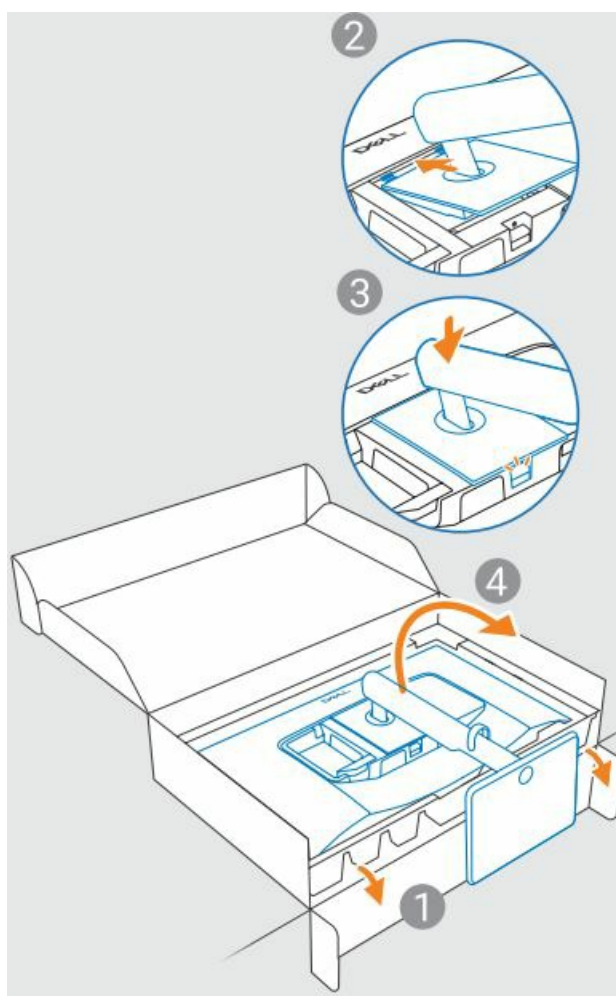
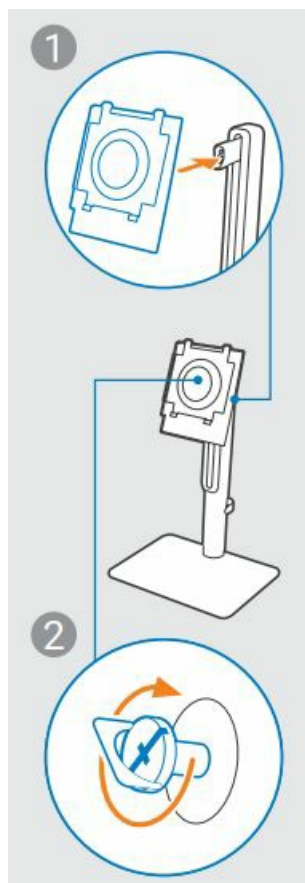
If you encounter any issues with the monitor, refer to the support resources available at [Dell Support for S2725QC](#).

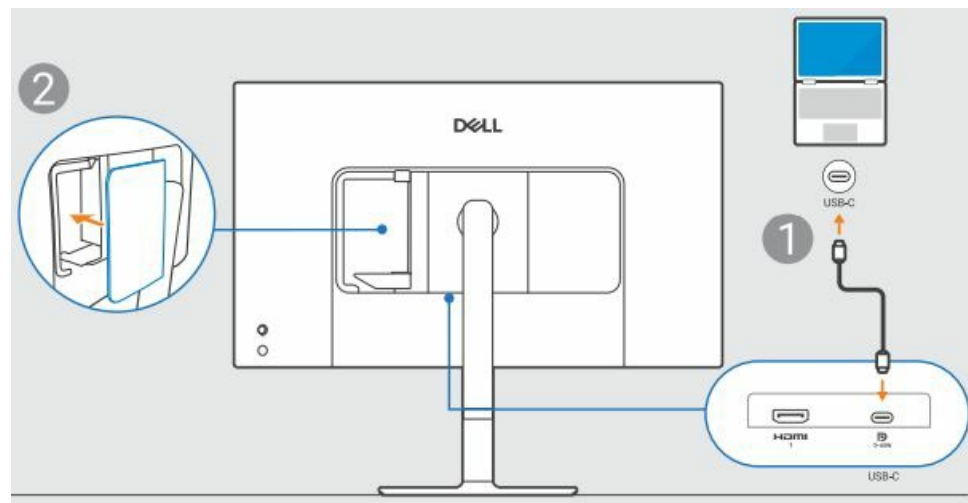
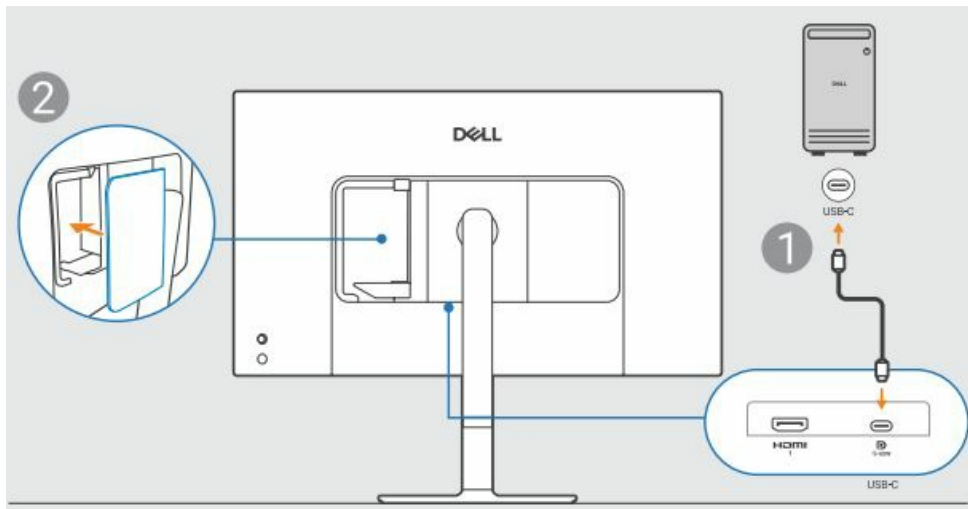
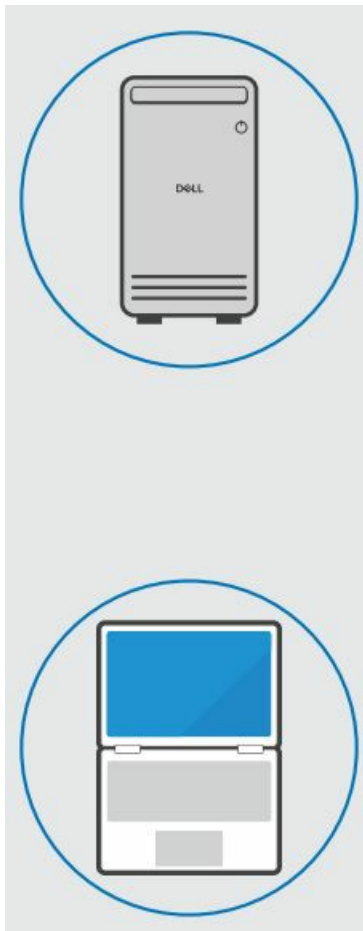
BOX CONTENT

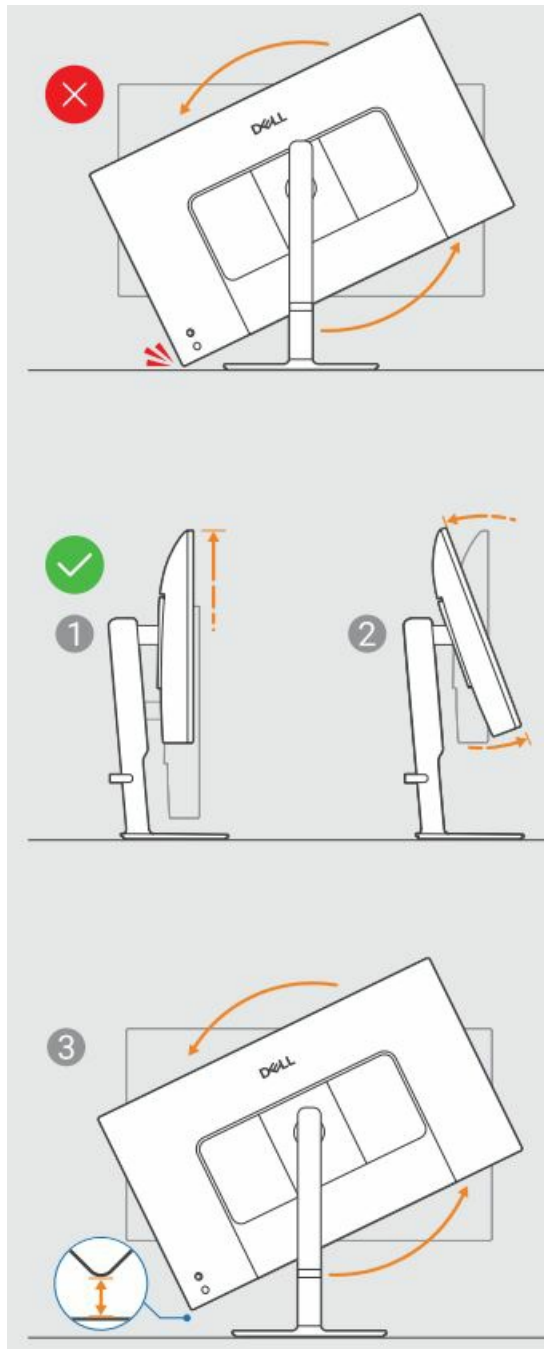
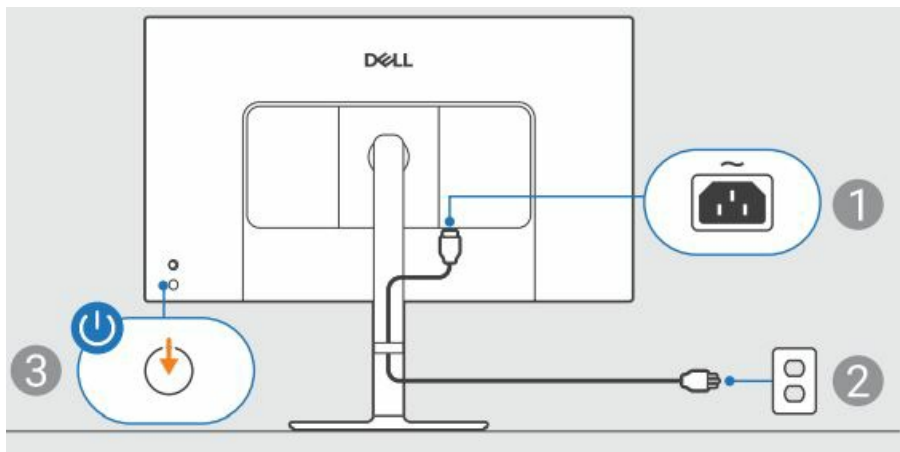


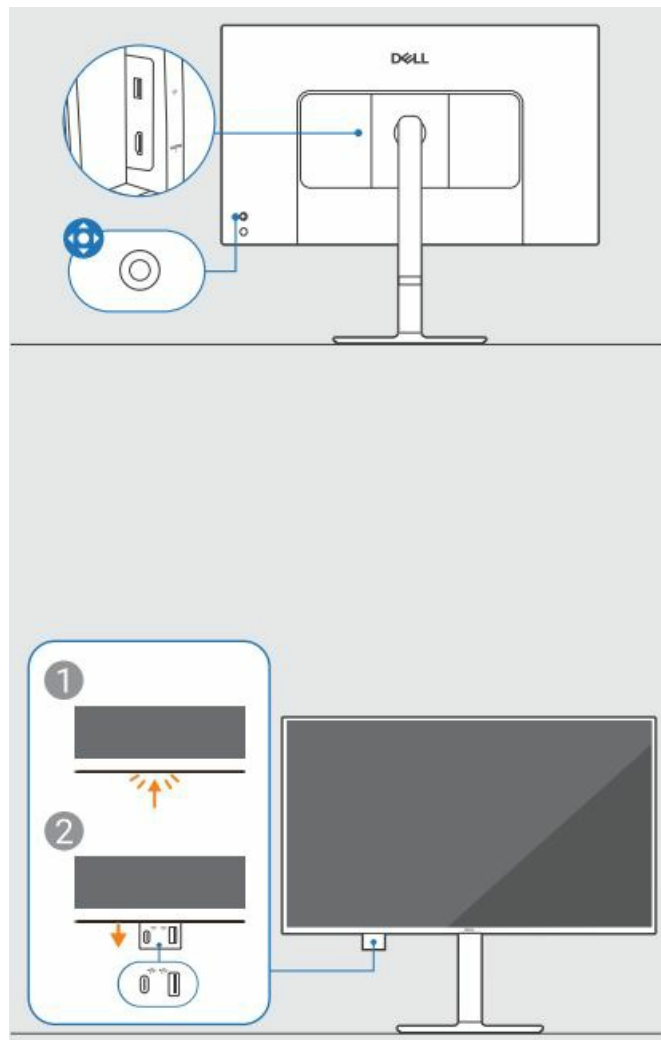
INSTALLATION AND CONNECTION INSTRUCTION











MORE INFORMATION

- Dell Display and Peripheral Manager Dell.com/support/ddpm
- Dell.com/support/S2725QC

Frequently Asked Questions (FAQ)

- **How do I enable HDR on the Dell 27 Plus 4K USB-C Monitor S2725QC?**

To enable HDR on the monitor, go to the display settings on your computer and ensure that HDR is enabled. You may also need to adjust settings on the monitor itself using the OSD menu.

- **Can I connect multiple devices to the monitor simultaneously?**

Yes, you can connect multiple devices to the monitor by using different input ports such as USB-C, HDMI, DisplayPort, etc. Switch between inputs using the monitor's input selection feature.

Documents / Resources

 <p>Dell S2725QC 27 Plus 4K USB-C Monitor</p>	<p>DELL Technology S2725QC 27 Plus 4K USB-C Monitor [pdf] User Guide S2725QC, S2725QC 27 Plus 4K USB-C Monitor, S2725QC, 27 Plus 4K USB-C Monitor, 4K USB-C Monitor, USB-C Monitor, Monitor</p>
--	---

References

- [User Manual](#)

Manuals+, Privacy Policy

This website is an independent publication and is neither affiliated with nor endorsed by any of the trademark owners. The "Bluetooth®" word mark and logos are registered trademarks owned by Bluetooth SIG, Inc. The "Wi-Fi®" word mark and logos are registered trademarks owned by the Wi-Fi Alliance. Any use of these marks on this website does not imply any affiliation with or endorsement.