

DELL Technologies Storage Integration Tools for VMware User Guide

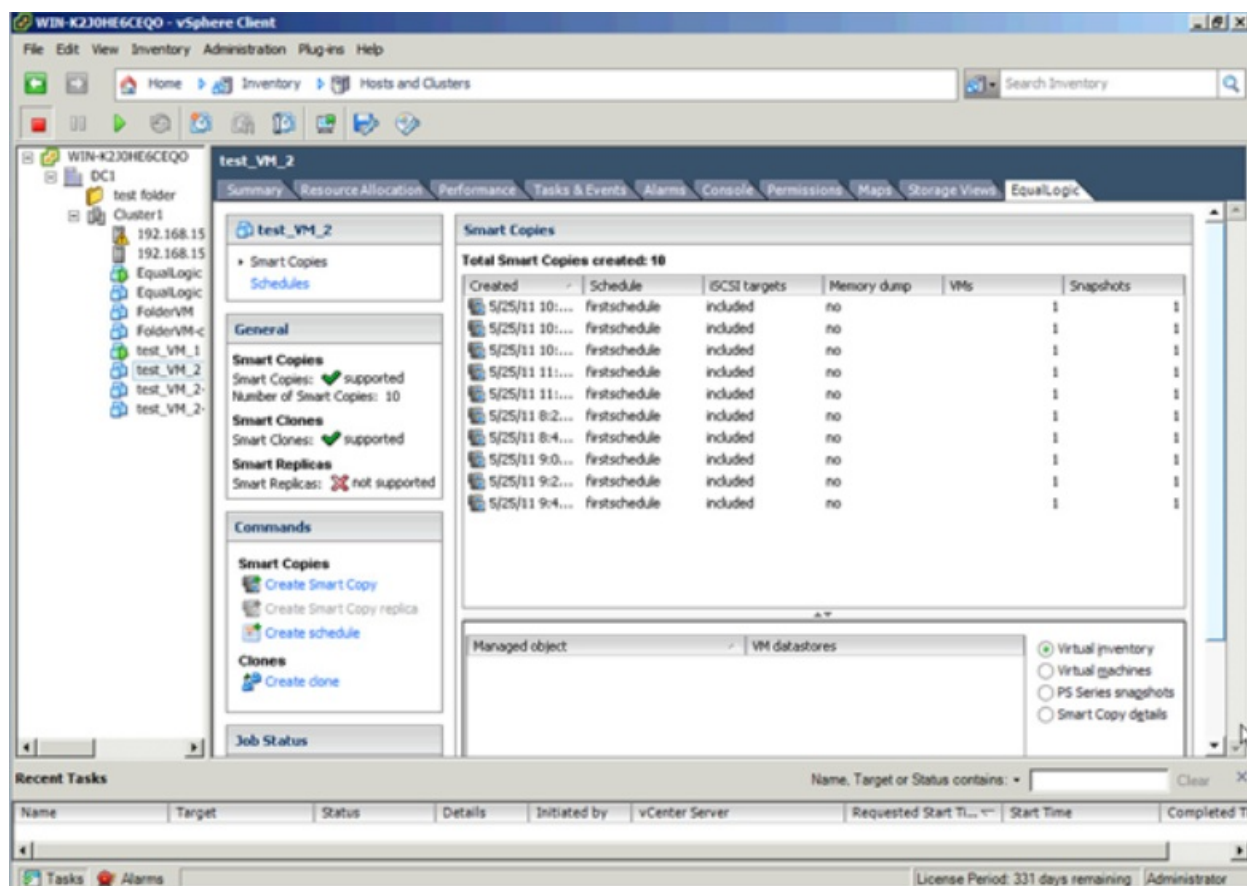
[Home](#) » [DELL Technologies](#) » DELL Technologies Storage Integration Tools for VMware User Guide 

Contents

- 1 [DELL Technologies Storage Integration Tools for VMware](#)
- 2 [Product Information](#)
- 3 [Revision History](#)
- 4 [Related Publications](#)
- 5 [Installing DSITV](#)
- 6 [Deploying DSITV](#)
- 7 [Setting Up DSITV](#)
 - 7.1 ##### # Welcome to Dell Storage Integration Tools for VMware # # Version – 06.01.01.XXX #
#####
- 8 [Check for Updates to DSITV](#)
- 9 [Install an Update to DSITV](#)
- 10 [Rebooting DSITV](#)
- 11 [Replay Manager Service for VMware](#)
- 12 [Dell Storage vSphere Client Plug-in](#)
- 13 [DSITV Application Troubleshooting](#)
- 14 [Registration Failure Related to TLS](#)
- 15 [Documents / Resources](#)
 - 15.1 [References](#)
- 16 [Related Posts](#)



DELL Technologies Storage Integration Tools for VMware



Specifications

- Product Name: Dell Storage Integration Tools for VMware
- Version: 6.1
- Administrator's Guide Part Number: 680-131-005
- Release Date: October 2023

Product Information

The Dell Storage Integration Tools for VMware (DSITV) is designed to integrate the Replay Manager Service for VMware (RMSV) and Dell Storage vSphere Client Plug-in with VMware vSphere. RMSV ensures consistent snapshots of VMware virtual machines and datastores, while the Dell Storage vSphere Client Plug-in provides storage administrators the ability to manage storage resources within VMware vCenter.

Installation

To install DSITV, follow these steps:

1. Download the DSITV installer from the official Dell website.
2. Run the installer and follow the on-screen instructions.
3. Configure RMSV by following the instructions provided in the guide.
4. Install the Dell Storage vSphere Client Plug-in in VMware vCenter.

Configuring RMSV

To configure the Replay Manager Service for VMware (RMSV), follow these steps:

1. Access the RMSV configuration settings within the DSITV interface.

2. Specify the snapshot frequency and retention policies for virtual machines and datastores.
3. Test the configuration by initiating a snapshot and verifying its consistency.

Managing Storage Resources

With the Dell Storage vSphere Client Plug-in, storage administrators can:

- Provision new storage resources.
- Monitor storage usage and performance.
- Manage snapshots and backups of virtual machines.

FAQ

- **Q: Who is the intended audience for this guide?**

A: The intended audience includes information technology professionals with intermediate to expert knowledge of Dell Storage Centers, Dell Storage Manager, and Replay Manager.

- **Q: How can I contact Dell for support?**

A: You can contact Dell for sales, technical support, or customer service by visiting the Dell Technologies Support site. For customized support, enter your system service tag on thesupport page.

Dell Storage Integration Tools for VMware

Version 6.1 Administrator's Guide

Notes, cautions, and warnings

NOTE: A NOTE indicates important information that helps you make better use of your product.

CAUTION: A CAUTION indicates either potential damage to hardware or loss of data and tells you how to avoid the problem.

WARNING: A WARNING indicates a potential for property damage, personal injury, or death.

© 2021 – 2023 Dell Inc. or its subsidiaries. All rights reserved. Dell Technologies, Dell, and other trademarks are trademarks of Dell Inc. or its subsidiaries. Other trademarks may be trademarks of their respective owners.

Preface

This guide includes instructions for installing the Dell Storage Integration Tools for VMware (DSITV) and for configuring Replay Manager Service for VMware (RMSV) and Dell Storage vSphere Client Plug-in. For the latest information about the Dell Storage Integration Tools for VMware, see the Dell Storage Integration Tools for VMware Release Notes.

Revision History

Table 1. Document revision history

Revision	Date	Description
----------	------	-------------

- | | | |
|-----|--------------|---|
| • A | June 2021 | Initial release |
| • B | August 2023 | Require resetting password on initial setup |
| • C | October 2023 | Updated for DSITV version 6.1.1 |

- D October 2023 Added a note about referencing the release notes for the latest information

Audience

The intended audience of this guide is information technology professionals who have intermediate to expert knowledge of Dell Storage Centers, Dell Storage Manager, and Replay Manager. This guide assumes administrative working knowledge of the VMware vSphere Client, VMware vCenter, and VMware ESXi.

Related Publications

The following documentation is available for client applications that are used with Dell storage products.

- Dell Storage SC Series Best Practices with VMware vSphere—Provides configuration examples, tips, recommended settings, and other storage guidelines a user can follow while integrating VMware vSphere with a Storage Center. This document answers many frequently asked questions about how VMware interacts with Storage Center features, such as Dynamic Capacity, Data Progression, and Data Reduction.
- Dell Storage vSphere Client Plug-in Administrator's Guide—Describes how to use the vSphere Client Plug-in to manage a Storage Center with the VMware vSphere Client.
- Replay Manager Administrator's Guide—Describes how to install Replay Manager and how to use the software to back up and restore data on a server.
- Dell Storage Manager Administrator's Guide —Provides configuration and management instructions for Dell Storage Manager. Dell Storage Manager provides enterprise-level management of multiple
- Storage Centers, including setting up and monitoring replications and disaster recovery (DR) sites. In addition, it provides various system-provided performance reports, and the ability to create custom reports.

Contacting Dell

Dell provides several online and telephone-based support and service options. Availability varies by country and product, and some services might not be available in your area.

To contact Dell for sales, technical support, or customer service issues, go to the Dell Technologies Support site.

- For customized support, type your system service tag on the support page and click Search.
- For general support, browse the product list on the support page and select your product.

Installing DSITV

This section describes DSITV components and how to install DSITV.

Introduction to DSITV

DSITV integrates the Replay Manager Service for VMware (RMSV) and Dell Storage vSphere Client Plug-in with VMware vSphere.

- Replay Manager Service for VMware (RMSV) ensures consistent snapshots of VMware virtual machines and datastores. To configure RMSV, see Configuring RMSV.
- Dell Storage vSphere Client Plug-in is a plugin for VMware vCenter that provides storage administrators the ability to manage Dell storage with the VMware vSphere Client. To install the Dell Storage vSphere Client Plug-in on a VMware vCenter Server, see Installing the vSphere Client Plugin.
- For information about installing and configuring VMware software, see: www.vmware.com/support.

Software Requirements

This section describes the software requirements for the DSITV components.

Table 2. Replay Manager Service for VMware (RMSV)

Product Versions

- Storage Center 7.3.x, 7.4.x, 7.5.x
- Replay Manager Explorer 7.8, 8.0, 8.0.1
- VMware ESXi 6.5, 6.7, 7.0
- VMware vCenter Server 6.5, 6.7, 7.0

Table 3. Dell Storage vSphere Client Plug-in

Product Versions

- Dell Storage Manager 2018 R1, 2019 R1, 2020 R1, 2020 R1.10, and 2020 R1.20
- Storage Center 7.3.x, 7.4.x, 7.5.x
- VMware ESXi 6.5, 6.7, 7.0
- VMware vCenter Server 6.5, 6.7, 7.0

NOTE: vCenter Server for Windows is not supported.

NOTE: FluidFS is not supported in DSITV version 5.1 and later.

NOTE: The Dell Storage Manager Data Collector is required for the Dell Storage vSphere Client Plug-in. See the Dell Storage Manager Installation Guide for information about installing the Data Collector.

Deploying DSITV

The DSITV virtual appliance is delivered as an Open Virtual Appliance (OVA) file. The OVA file is named DSITV-06.01.01.XXX.ova and is deployed to a VMware vCenter Server using the Deploy OVF Template wizard.

Steps

1. Start the vSphere Client and connect to the VMware vCenter Server.
2. Select Menu > VMs and Templates.
3. Select Actions > Deploy OVF Template.
The Deploy OVF Template wizard opens.
4. Specify the location of the .ova file:
 - Select URL and enter the location of the file.
 - Select Local file, and then Choose Files. Select the .ova file.
5. Click Next.
6. Enter a name for the virtual machine and select a location.
 - (Optional) Change the name of the virtual appliance in the Name field.
 - (Optional) Select a folder in the Inventory Location pane to which to deploy the virtual appliance.
7. Click Next.
The Select a compute resource page opens.

8. Select the host or cluster on which to deploy the virtual appliance.

9. Click Next.

The Review details page opens.

10. Verify the OVF template details and click Next.

The License agreement page opens.

11. Read the license agreement and click Accept.

12. Click Next.

The Storage page opens.

13. Select a virtual disk format:

- Thick Provision Lazy Zeroed: Disk size is established when the disk is created. Existing data on the hard drive is zeroed out on-demand as data is written to the disk.
- Thick Provision Eager Zeroed: Disk size is established when the disk is created. Existing data on the hard drive is zeroed out when the virtual disk is created.
- Thin Provision: Disk size accommodates the size of the content.

14. Select a VM Storage Policy from the list.

15. Click Next.

The Select networks page opens.

16. Select the destination network for the DSITV virtual machine files.

17. Select the IP Allocation Settings.

18. Click Next.

The Ready to complete page opens.

19. Review the settings for the template and click Finish.

Next steps

Assign a daily Snapshot Profile to the Storage Center volume on which DSITV is deployed to allow recovery of the DSITV virtual appliance.

Setting Up DSITV

After deploying DSITV, configure the time on the DSITV virtual appliance and then log in to the virtual appliance to configure the time zone and network settings.

Configuring the Time on the DSITV Virtual Appliance

Ensure that the time on the ESXi host is correct and then configure the DSITV virtual appliance to synchronize its time with the ESXi host.

Steps

1. Start the vSphere Client and connect to the VMware vCenter Server.

2. Select Menu > Hosts and Clusters.

The Hosts and Clusters view opens.

3. Select the ESXi host in the left navigation pane and click the Configure tab.

4. Click Edit.

The Edit Time Configuration page opens.

5. If the time or date is incorrect:


- Select whether to manually set the time or to use NTP.
- For manual configuration, enter current date and time.
- For NTP configuration, enter the server or servers to use, select Start NTP Service and choose the NTP Service Startup Policy.

6. Click OK.

7. Select Menu > VMs and Templates.

The Virtual Machines & Templates view opens.



8. Select the DSITV virtual appliance and click  (Edit Settings).

The Edit Settings dialog box opens.

9. Click the VM Options tab and expand the VMware Tools option.

10. Ensure that the Synchronize guest time with host check box is selected.

11. Click OK.

Logging In to DSITV

Use the vSphere Client to log in to DSITV.

Steps

1. Start the vSphere Client and connect to the VMware vCenter Server.


2. Select Menu > VMs and Templates.

The Virtual Machines & Templates view opens.



3. Select the DSITV virtual appliance and click  (Open Console).



4. If the virtual appliance is not running, click  (Power On).

5. When the login prompt appears, type the default DSITV login credentials.

- Type root at the login as prompt and press Enter.
- Type Fluid (case sensitive) at the password prompt and press Enter.

6. Change the root password.

- Type a new password at the Enter new root password prompt and press Enter.
- Type the new password at the Re-enter password prompt and press Enter. The DSITV command-line interface (CLI) prompt is displayed.

```
#####
# Welcome to Dell Storage Integration Tools for VMware #
# Version – 06.01.01.XXX #
#####
```

Item Status

1. Set the time zone (Current: UTC) Set
2. Configure network (eth0) Set
3. Configure RMSV Set
4. Register vSphere Client Plugin with vCenter

5. Unregister vSphere Web Client Plugin with vCenter (Valid for vSphere 6.7 U2 and below)
 6. Unregister vSphere Client Plugin with vCenter
 1. Restart Replay Manager for VMware (RMSV)
 2. Reboot appliance
 3. Change root password
 4. Customer support
 5. Update appliance
 6. Logout
- Enter selection [1 – 16]:

Configuring DSITV Settings

After logging in to DSITV for the first time, configure the time zone and network settings. In addition, Dell recommends changing the root password of DSITV now.

Configure the Time Zone of DSITV

Steps

1. Log in to DSITV.
2. At the CLI prompt, type 1 and press Enter.
3. Specify the time zone using a geographical location.
4. When the correct time zone is displayed, type 1 and press Enter to save the changes.
5. When the time zone is set, press Enter to return to the main menu.

Configure the Network Settings of DSITV

Steps

1. Log in to DSITV.
2. At the CLI prompt, type 2 and press Enter.
3. Type the hostname of DSITV and press Enter.
4. Type the IP address of DSITV for the management network and press Enter.
5. Type the network mask for the management network and press Enter.
6. Type the gateway IP address for the management network and press Enter.
7. Type the IP address of the DNS server for the management network and press Enter.
8. To specify a second DNS server, type the IP address of the DNS server for the management network and press Enter. Otherwise, press Enter to skip this step.
9. When the values that you entered in the previous steps are displayed on the screen, type y and press Enter to save the changes.
10. When the network settings are configured, press Enter to return to the main menu.

Required – Change the Root Password of DSITV

Steps

1. Log in to DSITV.

2. At the CLI prompt, type 13 and press Enter.
3. Type the new root password and press Enter.
4. Type the new root password again and press Enter.
5. When the root password is changed, press Enter to return to the main menu.

Updating DSITV

When an updated version of the DSITV virtual appliance becomes available, it can be installed from the virtual appliance. If DSITV is installed at a dark site, see [Updating DSITV at a Dark Site](#)

Display the Current Version of DSITV Steps

1. Log in to DSITV.
2. At the CLI prompt, type 15 and press Enter. The following options are displayed:

-
1. Appliance version
 2. Check for updates
 3. Install update
 4. Return to main menu

Enter selection [1 – 4]:

3. Type 1 and press Enter. The current version of the virtual appliance is displayed.
4. Press Enter to return to the virtual appliance update menu.

Check for Updates to DSITV

Steps

1. Log in to DSITV.
2. At the CLI prompt, type 15 and press Enter. The following options are displayed:

-
1. Appliance version
 2. Check for updates
 3. Install update
 4. Return to main menu

Enter selection [1 – 4]:

3. Type 2 and press Enter.
 - If an update is not found, the following message is displayed: No available updates found
 - If an update is found, the version number of the update is displayed.
4. Press Enter to return to the virtual appliance update menu.

Install an Update to DSITV

Prerequisites

CAUTION: Before updating DSITV, ensure that no scheduled backups or restore operations are in progress.

Steps

1. Log in to DSITV.
2. At the CLI prompt, type 15 and press Enter. The following options are displayed:

 1. Appliance version
 2. Check for updates
 3. Install update
 4. Return to main menu

Enter selection [1 – 4]:
3. Type 3 and press Enter.
 - If an update is not found, the following message is displayed: No available updates found
 - If an update is found, the version number of the update is displayed and the update is installed.
4. Press Enter to return to the virtual appliance update menu.
5. Type 16 and press Enter to log out of DSITV.
6. When the login prompt appears, log back in to DSITV.

Next steps

1. Reboot the DSITV appliance after installing the update. In rare cases, the version number is not refreshed immediately after an update. This action also updates the version number.
2. After rebooting the DSITV appliance, unregister and re-register the vSphere Client Plug-in from the CLI prompt. This action removes the old plug-in and registers the new plug-in to vCenter.
3. After registering the vSphere Client Plug-in, type 3 and press Enter at the CLI prompt to configure RMSV. For more information, see [Configuring RMSV](#).
4. When Replay Manager Explorer is installed on a server with the Replay Manager Service, restart the Replay Manager Service after the DSITV update completes.

Related information

Rebooting DSITV

Updating DSITV at a Dark Site

When DSITV is installed at a site without Internet access, updates to DSITV must be obtained from Dell Technical Support. The updates can then be made available using an internal web server or they can be copied directly to the virtual appliance.

Copy Updates to a Web Server

Steps

1. Contact Dell Technical Support to obtain the latest DSITVUpdate.zip file.
2. Extract the contents of the DSITVUpdate.zip file to a folder named dsitvupdate in the root directory of the web server.

For example, if the root directory of the web server is C:\inetpub\wwwroot, extract the contents of the .zip file to C:\inetpub\wwwroot\dsitvupdate.
3. Verify access to the updates by using a web browser to go to http://web_server_address/dsitvupdate/manifest/manifest-latest.xml.

4. Log in to DSITV.
5. Type 99 and press Enter to access the interactive shell.
6. Open the /etc/hosts file.
7. Add the following entry at the end of the hosts file: citv.compellent.com[IP_address_of_web_server]
8. Save changes to the hosts file and type exit to return to the CLI.
9. Install the updates as described in Updating DSITV.

Copy Updates to the Virtual Appliance

Steps

1. Contact Dell Technical Support to obtain the latest DSITVUpdate.zip file.
2. Using a computer with Internet access, download a .zip tool for CentOS release 6.7, which is the operating system of the virtual appliance.
3. Use Secure Copy (SCP) to copy the DSITVUpdate.zip file and extract the RPM file from a local computer to the virtual appliance.
4. Log in to DSITV.
5. Type 99 and press Enter to access the interactive shell.
6. Install the .zip tool:

```
rpm -ivh [zip_package_name].rpm
```
7. Create a directory named DSITVUpdate.zip in the root directory:

```
mkdir dsitvupdate
```
8. Extract the update files to the DSITVUpdate.zip directory:

```
unzip DSITVUpdate.zip -d dsitvupdate
```
9. Open the [/opt/vmware/var/lib/vami/update/provider/provider-deploy.xml](#) file.
10. Find the string <http://citv.compellent.com/> and change it to file:///root/dsitvupdate.
11. Save changes to the provider-deploy.xml file and type exit to return to the CLI.
12. Install the updates as described in Updating DSITV.

Rebooting DSITV

Prerequisites

CAUTION: Before rebooting DSITV, ensure that no scheduled backups or restore operations are in progress.

Steps

1. Log in to DSITV.
2. At the CLI prompt, type 12 and press Enter.
3. Type y and press Enter. The following messages are displayed: Broadcast message from root...
The system is going down for reboot NOW!
4. When the login prompt appears, log back in to DSITV.

Replay Manager Service for VMware

Replay Manager Service for VMware (RMSV) enables Replay Manager to communicate with VMware vCenter and create consistent Replays of VMware virtual machines and datastores on a Dell Storage Center.

RMSV Data Migration

Upgrading from earlier versions of DSITV requires a migration of RMSV data.

You can choose to migrate the RMSV data created in DSITV 5.x to DSITV 6.1 during the RMSV configuration process. DSITV prompts you to migrate data unless one of the following conditions is met:

- You have already migrated data from DSITV 5.x to DSITV 6.1.
- You chose to configure DSITV 6.1 without migrating the earlier data.

After you configure RMSV, the data migration option is no longer displayed and you can no longer migrate data from the earlier release.

NOTE: Each restore point increases the time it takes for the data migration to finish. After migration, the following data becomes accessible to DSITV 6.1:

- List of defined Storage Centers
- Email service settings and snapshot notifications email
- License status and serial number information
- Jobs schedule
- Backup sets and restore point status reports
- Related virtual machine and datastore backup data

NOTE: If you are running DSITV version earlier than 5.0, you must first upgrade to DSITV 5.x. Then, you can migrate the data from DSITV 5.x to DSITV 6.1 as indicated.

Configuring RMSV

RMSV must be configured with information about the VMware vCenter Server to allow Replay Manager to communicate with VMware vCenter.

Prerequisites

CAUTION: Errors might occur on the VMware ESXi host if multiple instances of RMSV, on multiple DSITV virtual appliances, are configured to communicate with a single VMware vCenter Server. Each instance of RMSV must be configured to communicate with a different VMware vCenter Server.

- Deploy DSITV and configure the time zone and network settings.
- Identify the hostname or IP address of the VMware vCenter Server.
- Identify the username and password of a VMware vCenter user with administrator privileges.
- Decide whether to migrate RMSV data from DSITV 5.x. For more information, see RMSV Data Migration.

Steps

1. Log in to DSITV.
2. At the CLI prompt, type 3 and press Enter to configure RMSV.

If you are upgrading from DSITV 5.x, DSITV begins the RMSV configuration process and asks if you want to migrate data from an existing DSITV 5.x appliance. If you have an existing DSITV 5.x appliance with data that

you would like to migrate, go to step 3. If prompted to migrate data, go to step 4.

3. **To** begin the data migration, type y when prompted and perform the following steps:

NOTE: If you have already configured RMSV or migrated from a DSITV 5.x appliance, the migration option is not available.

- Enter the IP address or hostname of the DSITV appliance from which to migrate the data.
DSITV authenticates the host and asks if you want to continue connecting.
- Type yes when asked to confirm that you want to continue connecting.
DSITV adds the host to the list of known hosts, stops the Replay Manager on that host, and begins copying the RMSV data files.
- After the files are migrated, DSITV disables the Replay Manager on that host, restarts Replay Manager, and indicates that the data migration has completed. Go to step 4.

4. Type the hostname or IP address of the VMware vCenter Server and press Enter.

5. Type the username of the VMware vCenter user with administrator privileges and press Enter.

6. Type the password of the user with administrator privileges and press Enter.

7. Retype the password and press Enter to confirm the password.

8. Type 11 and press Enter.

RMSV attempts to connect to the VMware vCenter Server. If a Connected successfully message is displayed, continue to step 8. If a Connection to vCenter failed message is displayed verify the server information and repeat the steps 4 through 7. For additional information, see Troubleshooting RMSV.

NOTE: If a server certificate message is displayed, type y and press Enter to trust the certificate.

9. Add the VMware vCenter Server to Replay Manager Explorer using the hostname or IP address of DSITV and the username and password of a VMware vCenter user with administrator privileges.

See the Replay Manager Administrator's Guide for details about adding the VMware vCenter Server to Replay Manager.

NOTE: Replay Manager management tools such as Replay Manager Explorer must be installed on a computer that has connectivity to the DSITV virtual appliance.

Dell Storage vSphere Client Plug-in

The Dell Storage vSphere Client Plug-in is a plug-in for VMware vCenter that provides storage administrators the ability to manage Dell storage with the VMware vSphere Client.

Installing the Dell Storage vSphere Client Plug-in

To install the Dell Storage vSphere Client Plug-in, register the plug-in with VMware vCenter.

Prerequisites

NOTE: This version of DSITV supports only VMware vCenter Server Appliance. Microsoft Windows vCenter Server is not supported.

- Deploy DSITV and configure the time zone and network settings.
- Identify the hostname or IP address of the VMware vCenter Server.
- Identify the username and password of a VMware vCenter user with administrator privileges.
- Ensure that Dell Storage Manager Data Collector is communicating with Storage Center.

Steps

1. Log in to DSITV.
2. At the CLI prompt, type 4 and press Enter.
3. Type the hostname or IP address of the VMware vCenter Server and press Enter.
4. Type the username of a VMware vCenter Server user with administrator privileges and press Enter.
5. Type the password of the user with administrator privileges and press Enter.
6. If necessary, retype the password and press Enter to confirm the password.

NOTE: If a server certificate message is displayed, type y and press Enter to trust the certificate.

7. Type the hostname or IP address of DSITV and press Enter.
8. Type y and press Enter.
9. After the vSphere Client Plug-in is installed, press Enter to return to the main menu.

See the Dell Storage vSphere Client Plug-in Administrator's Guide for details about managing and using the vSphere Client Plug-in.

Removing the vSphere Web Client Plug-in for vSphere 6.7 Update 2 and earlier

To remove the vSphere Web Client Plugin, unregister the plug-in from VMware vCenter.

Prerequisites

- Identify the hostname or IP address of the VMware vCenter Server.
- Identify the username and password of a VMware vCenter user with administrator privileges.

About this task

These steps describe how to remove vSphere Web Client Plug-in for vSphere 6.7 Update 2 and earlier. To remove the vSphere Client Plug-in for vSphere 6.7 Update 3 and later, see Removing the vSphere Client Plug-in for vSphere 6.7 Update 3 and later.

Steps

1. Log in to DSITV.
2. At the CLI prompt, type 5 and press Enter.
3. Type the hostname or IP address of the VMware vCenter and press Enter.
4. Type the username of a VMware vCenter user with administrator privileges and press Enter.
5. Type the password of the user with administrator privileges and press Enter.
6. Type y and press Enter to remove the vSphere Web Client Plugin.
7. After the vSphere Web Client Plugin is removed, press Enter to return to the main menu.
8. To view the changes in the VMware vCenter Web client, log out and log back in.

Removing the vSphere Client Plug-in for vSphere 6.7 Update 3 and later

To remove the vSphere Client Plug-in, unregister the plug-in from VMware vCenter.

Prerequisites

- Identify the hostname or IP address of the VMware vCenter Server.
- Identify the username and password of a VMware vCenter user with administrator privileges.

About this task

These steps describe how to remove vSphere Client Plug-in for vSphere 6.7 Update 3 and later. To remove the vSphere Web Client Plug-in for vSphere 6.7 Update 2 and earlier, see Removing the vSphere Web Client Plug-in for vSphere 6.7 Update 2 and earlier.

Steps

1. Log in to DSITV.
2. At the CLI prompt, type 6 and press Enter.
3. Type the hostname or IP address of the VMware vCenter and press Enter.
4. Type the username of a VMware vCenter user with administrator privileges and press Enter.
5. Type the password of the user with administrator privileges and press Enter.
6. Type y and press Enter to remove the vSphere Client Plug-in.
7. After the vSphere Client Plug-in is removed, press Enter to return to the main menu.
8. To view the changes in the VMware vCenter Web client, log out and log back in.

DSITV Application Troubleshooting

To handle any issues with the DSITV application:

- Use the RMSV troubleshooting procedures to troubleshoot issues with Dell Replay Manager Service for VMware.
- Use the vSphere Client Plug-in troubleshooting procedures to troubleshoot issues with Dell Storage vSphere Client Plug-in.

Troubleshooting RMSV

If the Replay Manager is unable to connect to the VMware vCenter Server:

- Verify that the hostname or IP address of the VMware vCenter Server is correct and the VMware vCenter Server user has administrator privileges. See Configuring RMSV.
- Verify that RMSV is running. See Save RMSV Log Files.

If further troubleshooting is required, Dell Technical Support might need a copy of RMSV logs for analysis. See Save RMSV Log Files.

Restart RMSV

Use option 11 in the CLI to restart RMSV and verify that it starts.

Steps

1. Log in to DSITV.
2. At the CLI prompt, type 11 and press Enter. The following messages are displayed: Waiting 15 seconds for the service to restart
Starting replaymanager: [OK] RMSV is stopped and restarted.
 - If [OK] is displayed, RMSV started successfully.
 - If [Failed] is displayed, RMSV failed to start.

Save RMSV Log Files

Use option 14 in the CLI to save the RMSV log file to a zip file.

Steps

1. Log in to DSITV.
2. At the CLI prompt, type 14 and press Enter. The following options are displayed:
 1. Gather support information
 2. Return to main menuEnter selection [1 – 2]:
 3. Type 1 and press Enter. The zip file with the logs is saved to the root directory of the virtual appliance.
 4. Use Secure Copy (SCP) to copy the zip file from the virtual appliance to a local computer.
When the zip file is on a local computer, it can be sent to Dell Technical Support.

Troubleshooting the vSphere Client Plug-in

Dell Storage Icon Is Missing

If the Dell Storage icon does not appear in the Administration pane of the vSphere Client:

- Verify that the hostname or IP address of the VMware vCenter Server is correct and the VMware vCenter Server user has administrator privileges. See Restart RMSV.
- Verify that the vSphere Client Plug-in is running. See Installing the vSphere Client plugin.
- Restart the vSphere Web Client service.
 - For a Windows-based vCenter server, restart the vSphere Web Client service by accessing Server Manager > Services
 - VMware vSphere Web Client service. Select Restart to restart the service.
 - For a Linux-based vCenter Server appliance, use one of the following commands to restart the service:
- `service vsphere-client restart`
- `/etc/init.d/vsphere-client restart`

Plugin Summary and Monitor Page Appears Disabled

Summary information might not display in the vSphere Client Plug-in. Information appears blank on the summary page (Summary tab, then Dell Storage tab) and monitor page (Monitor tab, then Dell Storage tab).

Ensure that the credentials you entered on the Manage tab for vCenter server and Dell Storage Manager configuration are correct.

Cannot Enable Live Volume to Failover Automatically

Live Volume configured to fail over automatically and promote the secondary volume might fail if the following requirements are not met:

- Type is Synchronous
- Synchronous mode is High Availability
- Source and target Storage Centers are at version 6.7 or later

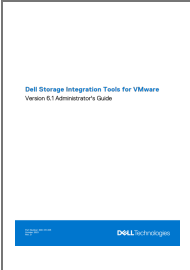
Select a datastore or RDM that meets these requirements. Optionally, modify the datastore to meet these requirements or create a new datastore or RDM.

Registration Failure Related to TLS

Registration of the vSphere Client Plug-in could fail if the vCenter Server is configured with TLS 1.0 disabled.

DSITV Application Troubleshooting

Documents / Resources

	<p>DELL Technologies Storage Integration Tools for VMware [pdf] User Guide Storage Integration Tools for VMware, Storage, Integration Tools for VMware, Tools for VMware, VMware</p>
---	--

References

- [User Manual](#)

[Manuals+](#), [Privacy Policy](#)

This website is an independent publication and is neither affiliated with nor endorsed by any of the trademark owners. The "Bluetooth®" word mark and logos are registered trademarks owned by Bluetooth SIG, Inc. The "Wi-Fi®" word mark and logos are registered trademarks owned by the Wi-Fi Alliance. Any use of these marks on this website does not imply any affiliation with or endorsement.