



[Home](#) » [DELL Technologies](#) » **DELL Technologies P3225QE Pro 32 Plus QHD USB-C Hub Monitor**
User Manual 

Contents [[hide](#)]

- [1 DELL Technologies P3225QE Pro 32 Plus QHD USB-C Hub Monitor](#)
- [2 Product Information](#)
- [3 What's in the box](#)
- [4 Instructions for use](#)
- [5 Monitor Settings](#)
- [6 Safety Instructions](#)
- [7 Frequently Asked Questions](#)
- [8 Documents / Resources](#)
 - [8.1 References](#)



DELL Technologies P3225QE Pro 32 Plus QHD USB-C Hub Monitor

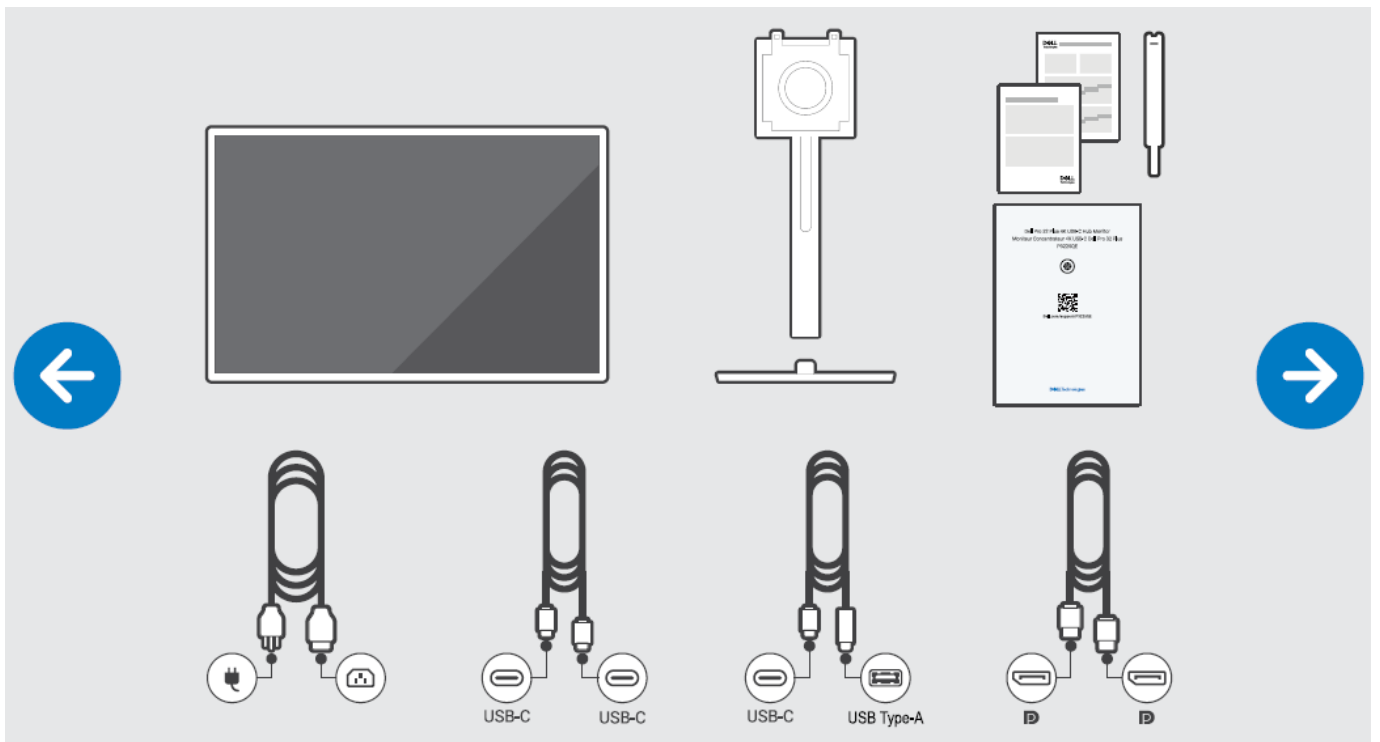


Product Information

Specifications

- Product Name: Dell Pro 32 Plus 4K-USB-C-Hub-Monitor P3225QE
- Connection Types: DP, USB-C
- Support: Dell Display and Peripheral Manager
- More Info: Dell Display and Peripheral Manager
- Product Support: Dell P3225QE Support

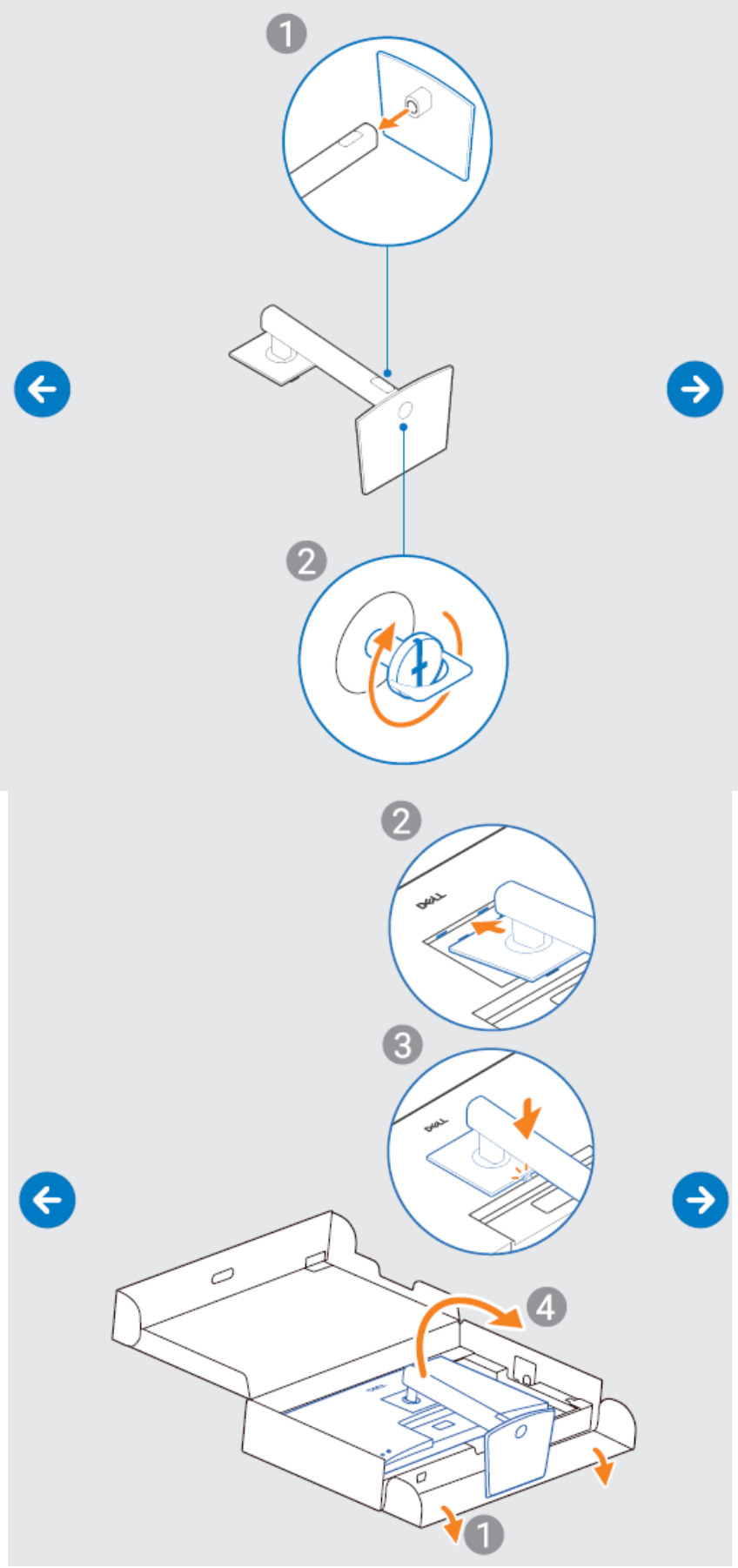
What's in the box

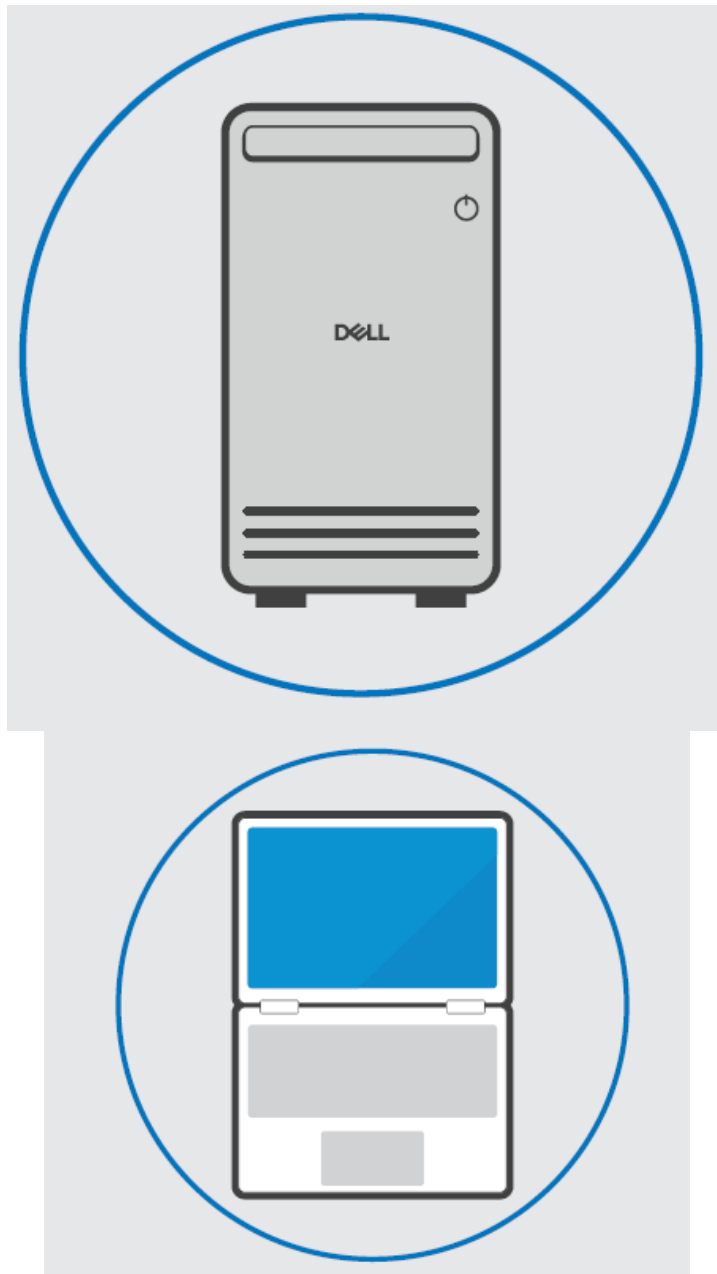


Instructions for use

Connecting the Monitor

1. Place the monitor on a stable surface.
2. Connect the DP or USB-C cable to your computer or laptop.
3. Power on the monitor.

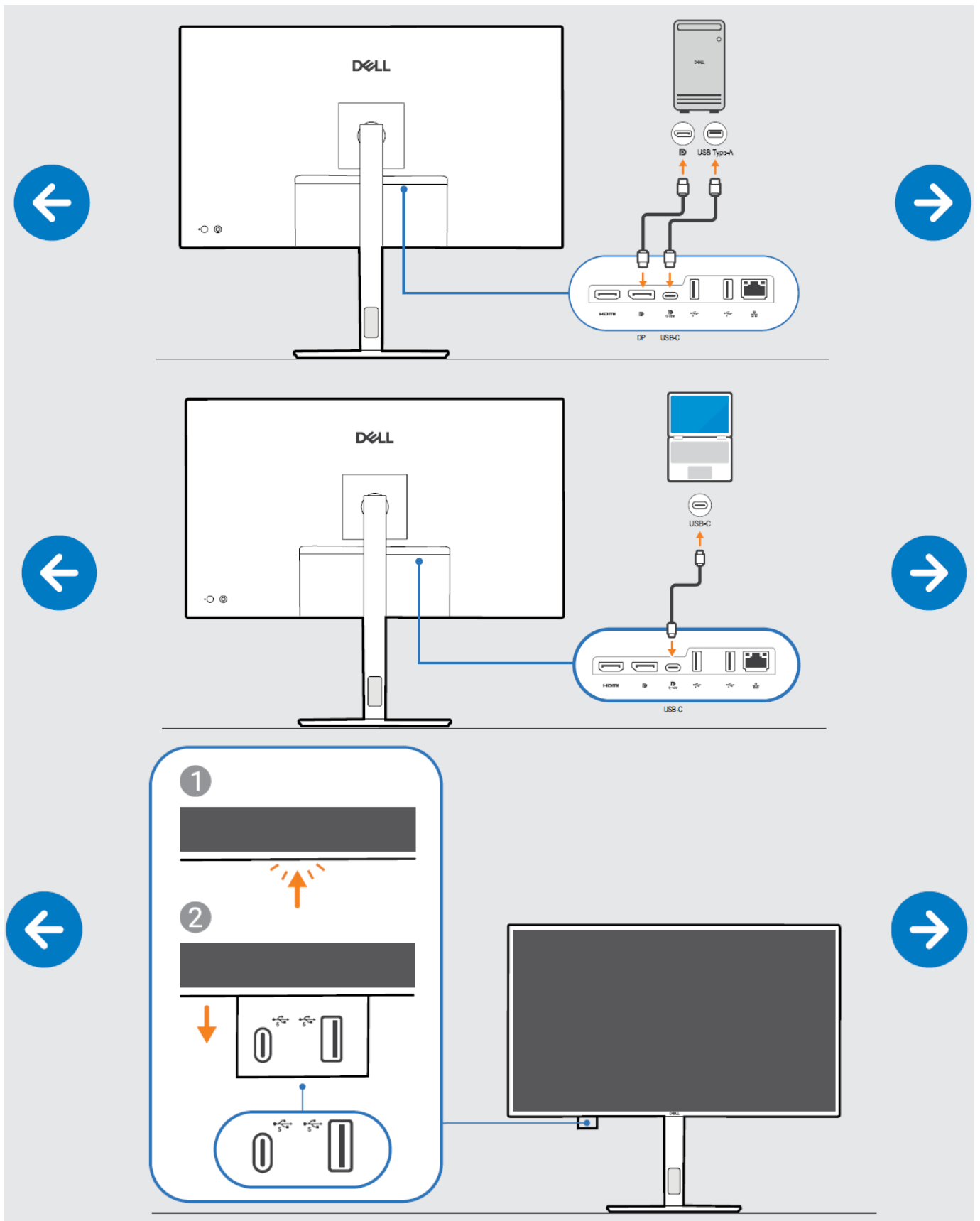




Monitor Settings

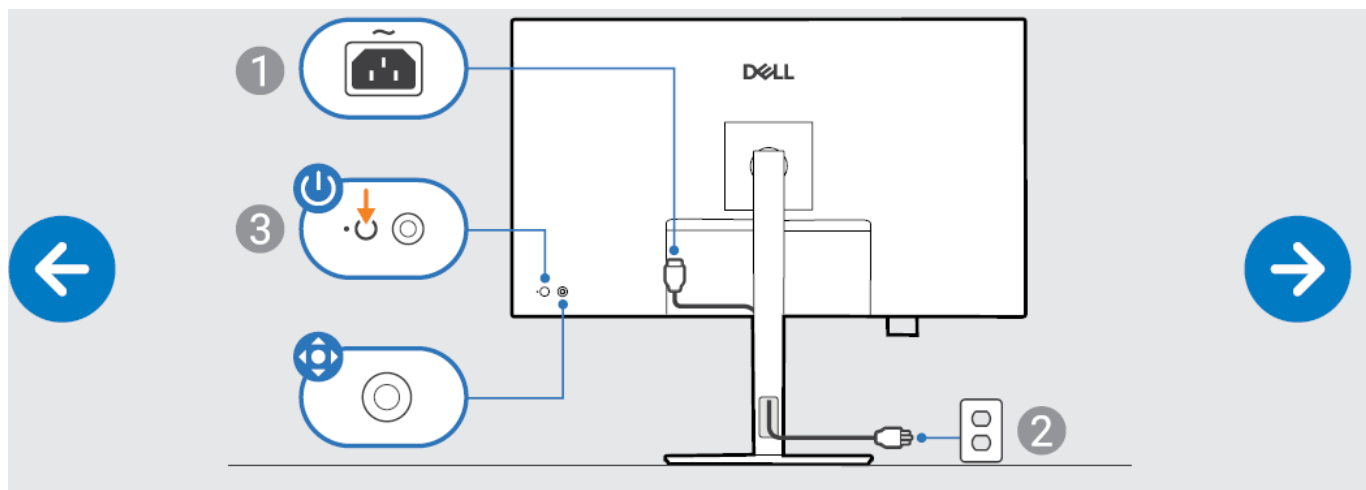
Adjusting Monitor Settings

1. Press the menu button on the monitor to access settings.
2. Use the navigation buttons to adjust brightness, contrast, and other display settings.
3. Save your settings before exiting the menu.

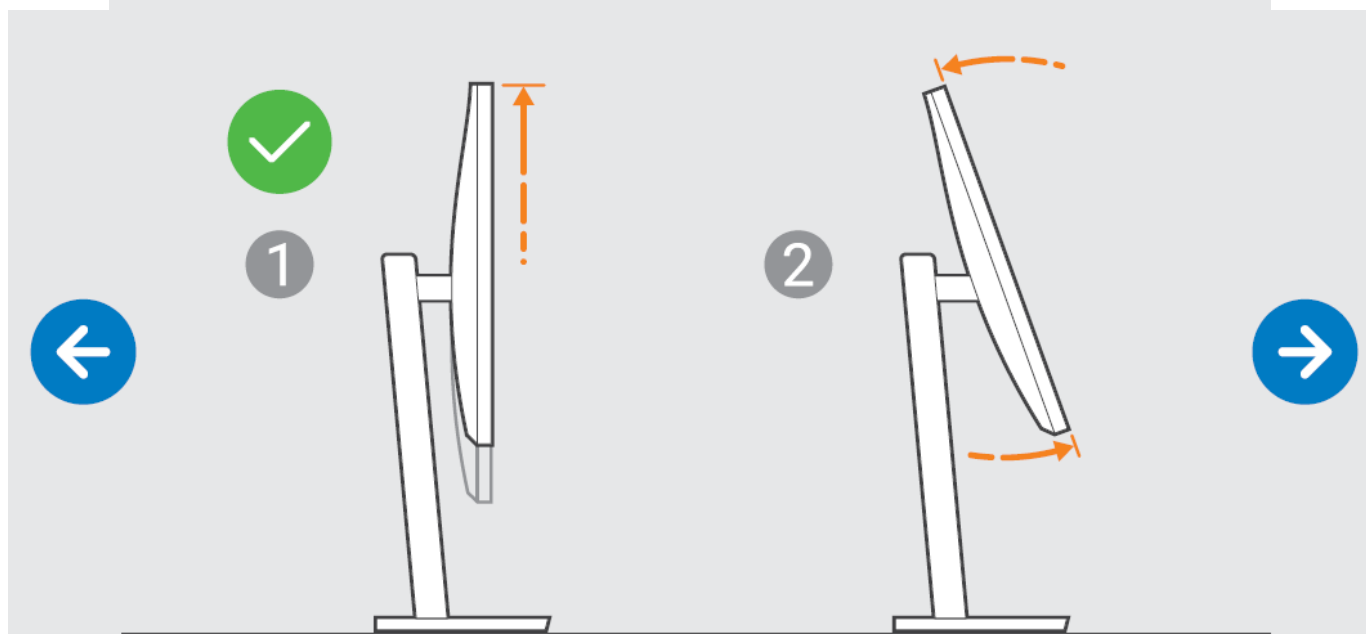
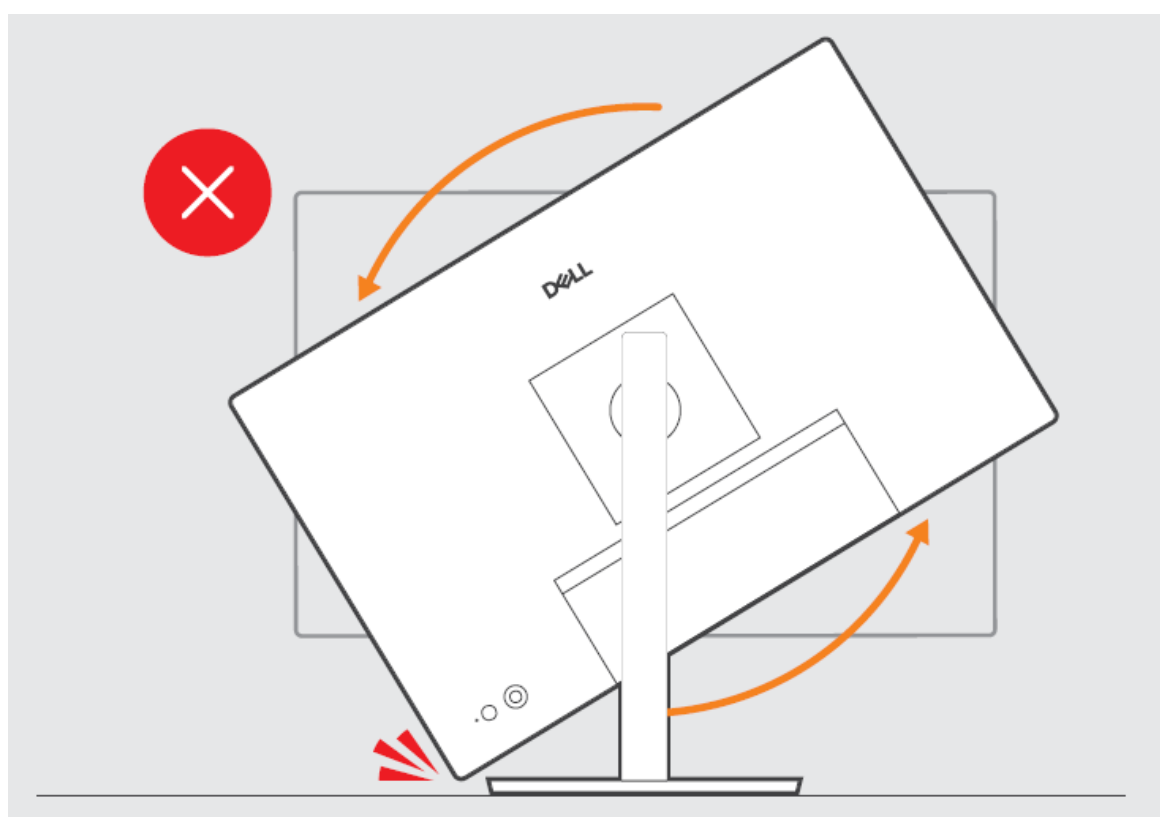


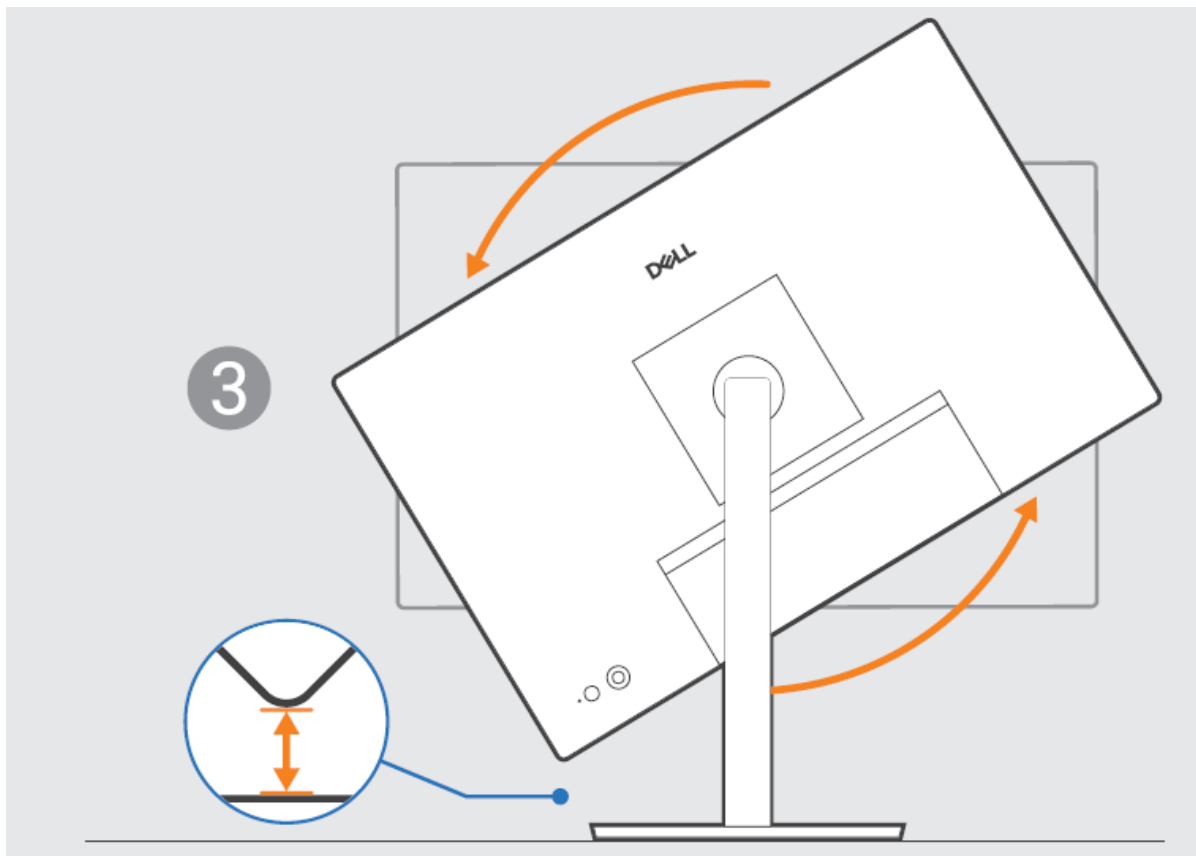
Using Dell Display and Peripheral Manager

1. Download and install the Dell Display and Peripheral Manager from the provided link.
2. Follow the on-screen instructions to set up and manage your monitor and connected peripherals.

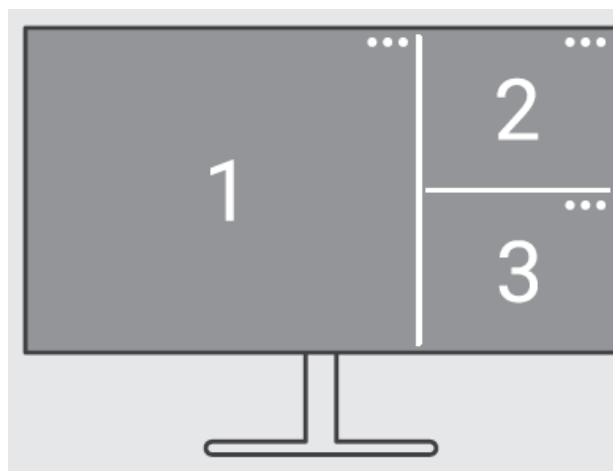


Safety Instructions





Dell Display and Peripheral Manager Dell.com/support/ddpm




Dell.com/support/P3225QE

Frequently Asked Questions

- **Q: How do I update the firmware of the monitor?**
 - A: To update the firmware, visit the Dell support website for the P3225QE monitor and download the latest firmware update. Follow the provided instructions to install the update on your monitor.
- **Q: Can I connect multiple devices to the monitor simultaneously?**

- A: Yes, you can connect multiple devices to the monitor using the available DP and USB-C ports. Ensure that your devices are compatible with the monitor's specifications.

Documents / Resources

	DELL Technologies P3225QE Pro 32 Plus QHD USB-C Hub Monitor [pdf] User Manual P3225QE, P3225QE Pro 32 Plus QHD USB-C Hub Monitor, P3225QE, P ro 32 Plus QHD USB-C Hub Monitor, QHD USB-C Hub Monitor, USB-C H ub Monitor, Hub Monitor, Monitor
---	--

References

- [User Manual](#)

DELL
Technologies

DELL Technologies, Hub Monitor, Monitor, P3225QE, P3225QE Pro 32 Plus QHD USB-C Hub Monitor, Pro 32 Plus QHD
USB-C Hub Monitor, QHD USB C Hub Monitor, USB-C Hub Monitor

Leave a comment

Your email address will not be published. Required fields are marked *

Comment *

Name

Email

Website

☐ Save my name, email, and website in this browser for the next time I comment.

Post Comment

Search:

e.g. whirlpool wrf535swhz

Search

[Manuals+](#) | [Upload](#) | [Deep Search](#) | [Privacy Policy](#) | [@manuals.plus](#) | [YouTube](#)

This website is an independent publication and is neither affiliated with nor endorsed by any of the trademark owners. The "Bluetooth®" word mark and logos are registered trademarks owned by Bluetooth SIG, Inc. The "Wi-Fi®" word mark and logos are registered trademarks owned by the Wi-Fi Alliance. Any use of these marks on this website does not imply any affiliation with or endorsement.