



delight 55377 Smart Wi-Fi Universal Infrared Controller Instructions

[Home](#) » [delight](#) » delight 55377 Smart Wi-Fi Universal Infrared Controller Instructions 



MART WI-FI UNIVERSAL INFRARED CONTROLLER





Contents

- [1 PRODUCT INFORMATION:](#)
- [2 WARNINGS:](#)
- [3 APPLICATION:](#)
- [4 INSTALLATION:](#)
- [5 DEVICE FACTORY RESET:](#)
- [6 CLEANING:](#)
- [7 DISPOSAL:](#)
- [8 Documents / Resources](#)
- [9 Related Posts](#)

PRODUCT INFORMATION:

Control any remote controlled device using your smartphone. You can replace all IR remotes with this device. With the help of the app control, you can even turn your devices on and off at the same time, this is advantageous for, for example, a TV, sound system, indoor unit, but it can also be suitable for controlling air conditioners, LED strips, fans and many other devices. Raise the comfort of your home to a higher level, turn on the air conditioner when you are heading home, so that you can be greeted by a cool house in the summer when you get home. The device is capable of emitting an infrared signal in 360°, so it can control devices throughout the room. A standard 5 V USB port is sufficient for its power supply (can also be used with a power adapter if required)

- Wi-Fi technology
- 360° control
- Discreet white design
- Compact size
- Non-slip rubber base
- Amazon Alexa, Google Home and IFTTT compatibility
- You can grant access to the management of individual devices to others within the app.
- Combining these options is possible in any way, the only limit is your imagination.
- Accessory MicroUSB – USB cable

Supply voltage:	USB 5 V	Control range:	max. 5 – 6 m
Connector type:	MicroUSB	Protection:	IP20
Network connection:	Wifi 2.4 GHz – 802.11 b/g/n	Size:	Ø63 x 27 mm
Application:	TuyaSmart	Color:	black
Smart home integration:	Amazon Alexa, Google Home, Apple HomeKit (Siri only)	Accessory cable:	yes, 100 cm
Compatible smartphone operation systems:	IOS 6.0+ / Android 2.3+	Cable color:	black
It can be controlled based on an event:	yes	Material:	plastic
Operating temperature:	10 – 50°C	Weight:	~50 g

WARNINGS:



DANGER OF SUFFOCATION!

- Please keep the packaging of the device away from children, as it may lead to choking. The device can only be used by adults, the storage location must be chosen in such a way that children cannot accidentally access it. Children must not play with the device.
- The device may only be used for its intended purpose! The device may only be used by persons who have read and understood this user manual and are able to operate the device accordingly! Persons with reduced mental, physical or sensory abilities may not use the device! Children must not use the device! The device is designed for residential use!
- Do not use the device if it has previously been dropped or bumped against something and it is visibly damaged! The safety equipment must be used as intended, it is strictly forbidden to modify or eliminate them!
 1. Do not operate the device in a damp, wet environment, the device can only be used indoors, in a dry place. Otherwise, there is a risk of short circuit and electric shock!
 2. The device may only be operated from a power source that complies with the specification. (also in the case of a USB port of an adapter or other device)
 3. Install the device so that it is not exposed to direct sunlight or heat sources!!
 4. It is forbidden to cover the device with any material! Do not disassemble the device. It is forbidden to modify the parameters of the device!!
 5. The manufacturer and the distributor are not responsible for damages resulting from improper use!

APPLICATION:

1. Connect to the local WiFi network!
2. Program installation:

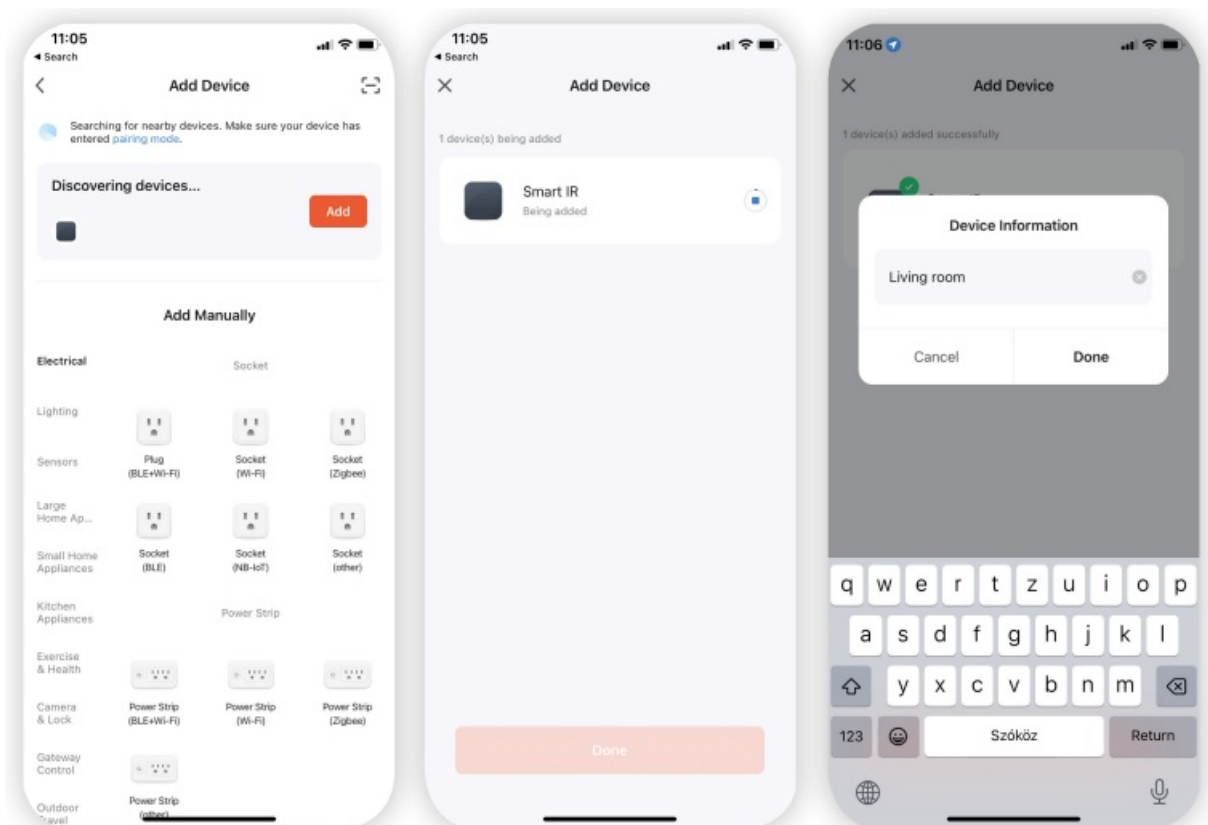
Download the Tuya Smart app from the Play Store or AppStore and install it if you haven't already.



To download the program, use your phone's camera to read the QR code below.

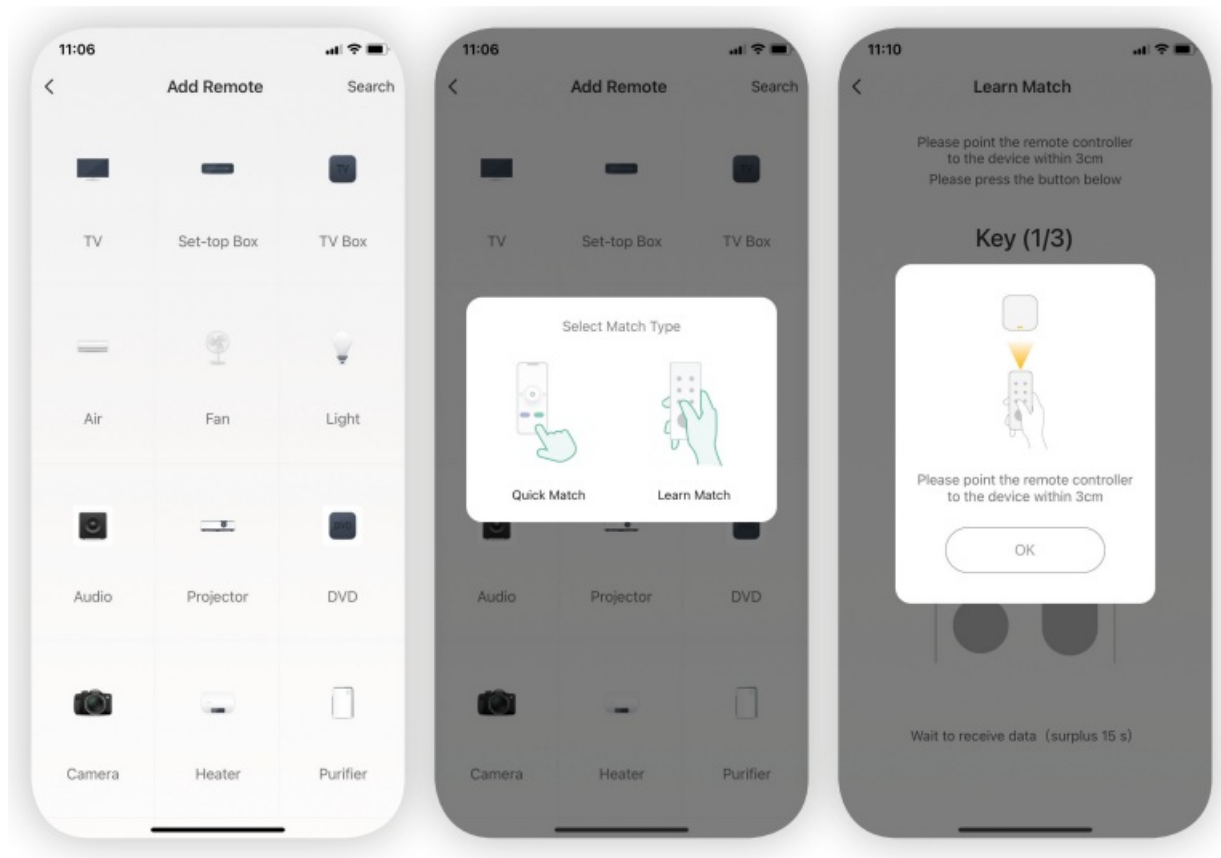
<https://globiz.shop/qr/425732303330>

3. If you have a user account, log in to your profile. If you haven't registered an account before, register by entering your details and then log in.
4. If you have connected the IR controller to a power source, the application will automatically recognize it. Follow the on-screen instructions, add the device to your profile, name the device and, if necessary, set the room in which the device is located. (This can be useful in the case of several identical devices) If the program did not automatically recognize the IR controller, please press the button on the bottom of the device for 5-6 seconds to factory reset. The device will then go into pairing mode, try to find the device again using the application.



5. Add device: After successful device adding, you can add household appliances you want to control, which are organized by category and brand. Follow the on-screen instructions to teach the remote control. During programming, you can try to control your device with 3 types of communication options, observing its response.

If automatic control doesn't work, try pairing the device using manual learning. This version only supports learning the 38k bit rate signal. Please keep the remote control at a maximum distance of 3 centimeters from the center of the device during pairing. During learning, the LED indicator lights up continuously, if the indicator LED turns off upon successful signal reception.



For other information about the settings, and operation of the application, refer tot he description of TuyaSmart.

INSTALLATION:

Once you have completed the device configuration and tested the device, install it on the desired window or door. During installation, make sure that the notched parts on the side of the opening sensor face each other. Before gluing / screwing on the product, test that the device detects opening and closing. Stick the product in the right position.

DEVICE FACTORY RESET:

Press the top button for 10 seconds to restore factory settings.

CLEANING:

If the switch is accessible and there is dirt on the outer case, de-energize the device and wipe off any dirt with a soft, dry, microfiber cloth. Do not use a damp cloth.


DISPOSAL:



This symbol on the product or on its packaging indicates that this electrical and electronic product must not be disposed of with your other household waste. For proper disposal and reuse, please return this product to a designated collection point. By ensuring this product is disposed of correctly, you will help prevent potential

negative consequences for the environment and human health, which could otherwise be caused by inappropriate waste handling of this product. Contact your local authorities or the nearest collection point for more details on disposal.

Documents / Resources

	<p>delight 55377 Smart Wi-Fi Universal Infrared Controller [pdf] Instructions 55377, QX-311, 55377 Smart Wi-Fi Universal Infrared Controller, Smart Wi-Fi Universal Infrared Controller, Wi-Fi Universal Infrared Controller, Universal Infrared Controller, Infrared Controller, Controller</p>
---	--