



## delight smart 55376 Smart WiFi Opening Sensor User Manual

[Home](#) » [delight smart](#) » delight smart 55376 Smart WiFi Opening Sensor User Manual 

delight smart 55376 Smart WiFi Opening Sensor



## Contents

- [1 PRODUCT INFORMATION:](#)
- [2 WARNINGS:](#)
- [3 INSERTING THE BATTERY:](#)
- [4 APPLICATION:](#)
- [5 INSTALLATION:](#)
- [6 DEVICE FACTORY RESET:](#)
- [7 CLEANING:](#)
- [8 DISPOSAL:](#)
- [9 Documents / Resources](#)
- [10 Related Posts](#)

## PRODUCT INFORMATION:

Keep your family and valuables safe! Receive an immediate notification on your smartphone or tablet if someone opens your window or door. Automate the lighting of your home: e.g. if you go into the pantry or restroom, the light should turn on automatically and turn off with a delay! Thanks to the self-adhesive back, it can be easily installed on any door or window. The product works with WiFi technology, so it is not necessary to install a so-called Gateway network device, it is enough if you have an Internet connection at home and have wireless access. (There is a router and available WiFi)

Purchase these magnetic opening sensors for all windows and doors and name the devices, so you will know exactly which doors and windows have been left open or which have been tampered with. The device reacts to an opening of 2 cm by sending an instant message, if you have several devices compatible with the Tuya applicator, you can connect them. E.g.: If someone enters the apartment while you are away, all the lights will flash at the same time and a siren will start.

The product does not have MABISZ registration, so it cannot be used as an officially accepted alarm system.

- Wi-Fi technology
- LED indicator
- Detection of openings from 2 cm
- Immediate notification of opening
- Self-adhesive and screw fastening
- Reminder of a window or door left open 1
- Amazon Alexa, Google Home and IFTTT compatibility
- You can grant access to the management of individual devices to others within the program.
- Combining these options is possible in any way, the only limit is your imagination.

1 In case of control with smartphone location. Requires individual configuration.

<b>Supply voltage:</b> 2 x AAA elem (not included)	<b>Operating environment:</b> 10 – 50°C
<b>Network connection:</b> Wifi 2.4 GHz – 802.11b/g/n	<b>Protection:</b> IP20
<b>Application:</b> TuyaSmart	<b>Size:</b> <b>Main unit:</b> 70 x 25 x 20 mm <b>Magnetic unit:</b> 40 x 15 x 18 mm
<b>Smart home integration:</b> Amazon Alexa, Google Home, Apple HomeKit (Siri only)	<b>Color:</b> White
<b>Compatible smartphone operating systems:</b> IOS 6.0+ / Android 2.3+	<b>Indicator LED:</b> Red
<b>It can be controlled based on an event:</b> Yes	<b>Material:</b> Plastic

## WARNINGS:



### **DANGER OF SUFFOCATION!**

- Please keep the packaging of the device away from children, as it may lead to choking. The device can only be used by adults, the storage location must be chosen in such a way that children cannot accidentally access it. Children must not play with the device.
  - The device may only be used for its intended purpose! The device may only be used by persons who have read and understood this user manual and are able to operate the device accordingly! Persons with reduced mental, physical or sensory abilities may not use the device! Children must not use the device! The device is designed for residential use!
  - Do not use the device if it has previously been dropped or bumped against something and it is visibly damaged! The safety equipment must be used as intended, it is strictly forbidden to modify or eliminate them!
1. Do not operate the device in a damp, wet environment, the device can only be used indoors, in a dry place. Otherwise, there is a risk of short circuit and electric shock!
  2. For safe installation of the device, fix the device! Use self-adhesive glue or screws! Install the device so that it is not exposed to direct sunlight or heat sources!!
  3. It is forbidden to cover the device with any material! Do not disassemble the device. It is forbidden to modify the parameters of the device!!
  4. The manufacturer and the distributor are not responsible for damages resulting from improper use!

## INSERTING THE BATTERY:

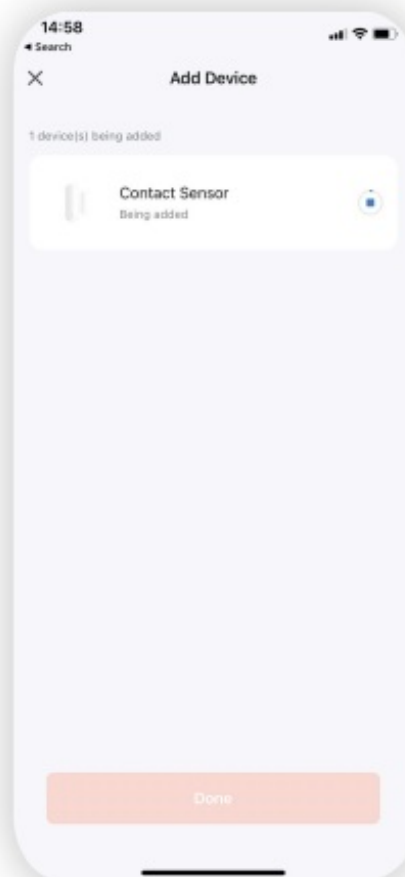
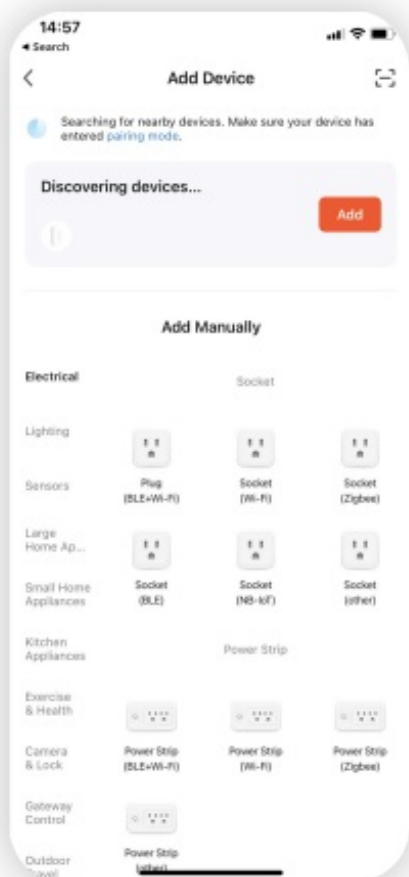
Insert the 2 AAA batteries into the control unit. To do this, push the back cover slightly upwards, then lift it off the device housing. When inserting the battery, pay attention to the correct polarity. Place the back cover back on the device.

## APPLICATION:

1. Connect to the local WiFi network.
2. Program installation: Download the Tuya Smart app from the Play Store or AppStore and install it if you haven't already.

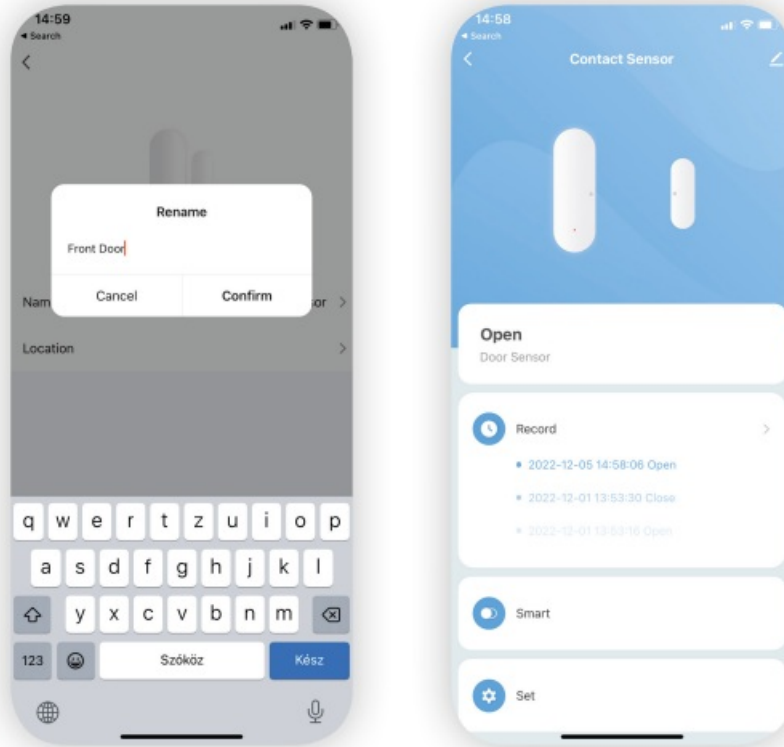
	 <p>To download the program, use your phone's camera to read the QR code below.</p>
	
	

3. If you have a user account, log in to your profile. If you haven't registered an account before, register by entering your details and then log in.
4. When you turn on the switch, the application will automatically recognize the devices waiting to be paired. Follow the on-screen instructions, add the device to your profile, name the device and, if necessary, set the room in which the device is located. (This can be useful in the case of several identical devices)



If the program did not recognize the device automatically, please use the included reset key to press the reset button for 5-6 seconds, The LED on the top will flash quickly, which means the pairing mode, then try to find the device again using the application.

5. After successful pairing, the switch can be controlled remotely using a smartphone. For other information about the application settings, refer to the description of TuyaSmart. To reset the device: Hold the button at the top for 10 seconds to restore the factory settings.



## INSTALLATION:

Once you have completed the device configuration and tested the device, install it on the desired window. During installation, make sure that the notched parts on the side of the opening sensor face each other. Before gluing / screwing on the product, test that the device detects opening and closing. Stick the product in the right position.

## DEVICE FACTORY RESET:

Press the top button for 10 seconds to restore factory settings.

## CLEANING:

If the switch is accessible and there is dirt on the outer case, de-energize the device and wipe off any dirt with a soft, dry, microfiber cloth. Do not use a damp cloth.

## DISPOSAL:



This symbol on the product or on its packaging indicates that this electrical and electronic product must not be disposed of with your other household waste. For proper disposal and reuse, please return this product to a designated collection point. By ensuring this product is disposed of correctly, you will help prevent potential negative consequences for the environment and human health, which could otherwise be caused by inappropriate waste handling of this product. Contact your local authorities or the nearest collection point for more details on disposal.



Documents / Resources

	<p><a href="#">delight smart 55376 Smart WiFi Opening Sensor</a> [pdf] User Manual 55376, QX-311, 55376 Smart WiFi Opening Sensor, Smart WiFi Opening Sensor, WiFi Opening Sensor, Opening Sensor, Sensor</p>
--	---