



## deli 3870 Comb Binding Machine User Manual

[Home](#) » [DELI](#) » deli 3870 Comb Binding Machine User Manual 

### Contents

- [1 deli 3870 Comb Binding Machine](#)
- [2 INTRODUCTION](#)
- [3 Direction far use](#)
- [4 Common fault analysis troubleshooting](#)
- [5 Product parameters](#)
- [6 WARRANTY CARD](#)
- [7 Documents / Resources](#)
- [8 Related Posts](#)

# deli

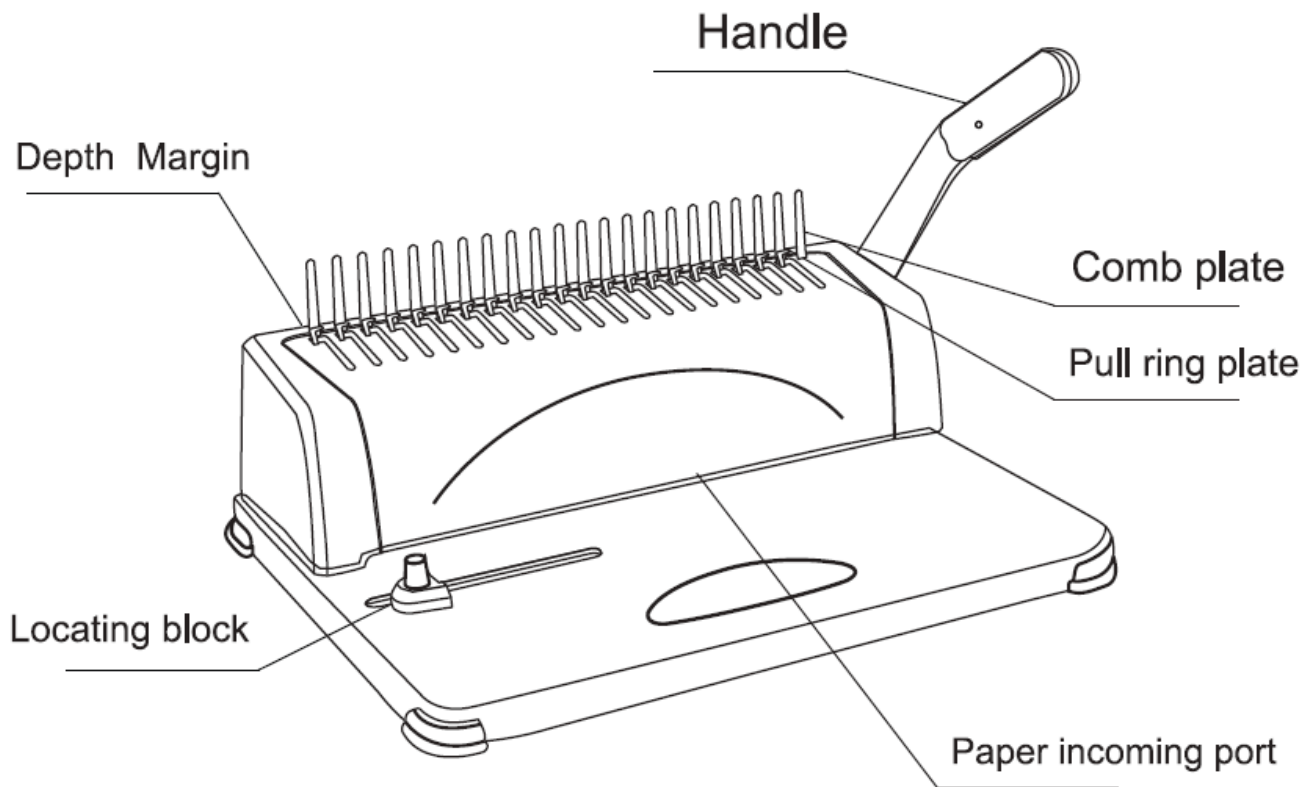
**deli 3870 Comb Binding Machine**



## INTRODUCTION

Thank you for purchasing No.3870 rubber ring binding machine of Deli Company. The multiple functions and elegant design make the product applicable to individual use and department use. We believe that the rubber ring binding machine with complete functions will make your document binding have higher efficiency. To make you correctly use the product and prevent the inconvenience caused to you and other people, please carefully read this manual.

**Product appearance!!~structure and the names**



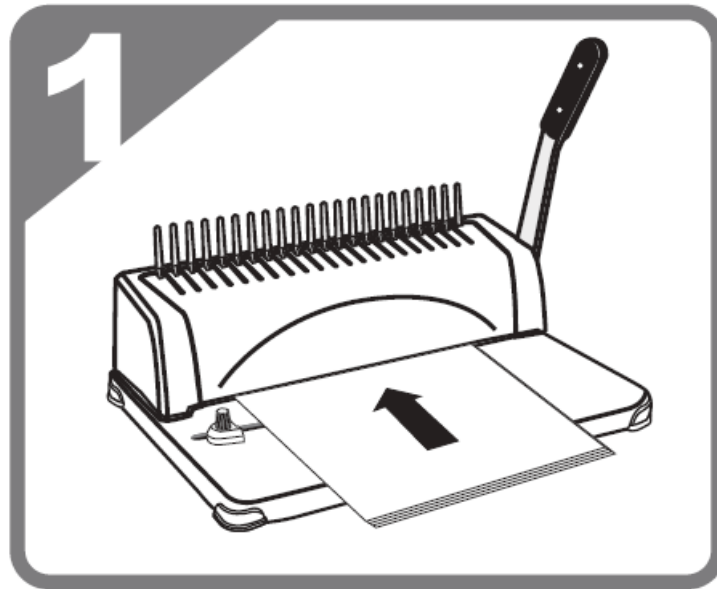
### **Direction far use**

1. The machine is used for punching of paper and plastic cover, and plastic clip is used for loose-leaf binding. The machine only can be used for this purpose, and please use it according to the operation instruction.
2. Before punching of the original materials, do remember to use waste paper to test whether the machine works normally.
3. Empty the waste paper container periodically.
4. The upper limit number for punching is 12, and this number shall not be exceeded.

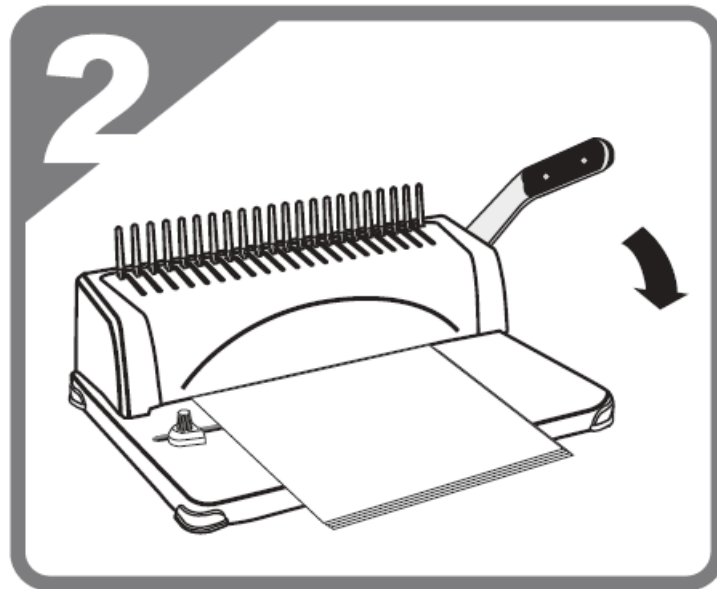
### **Attention**

Put the machine on the stable and safety table before use.

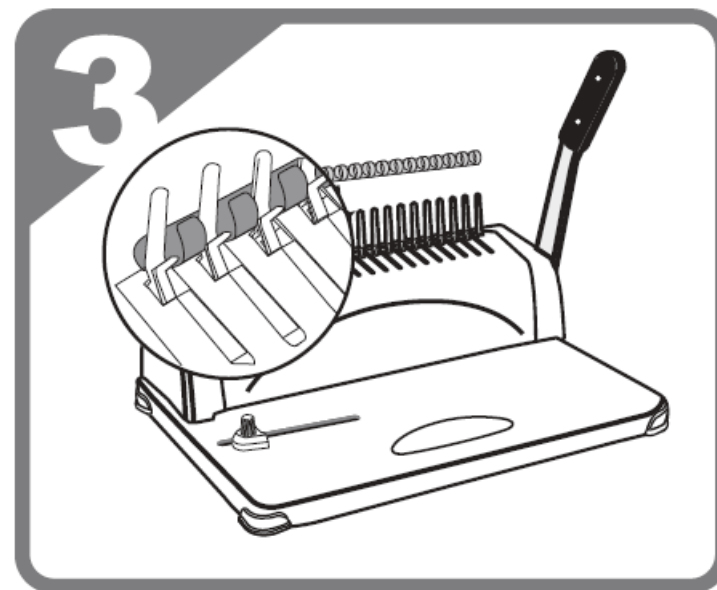
1. Insert paper and adjust "Locating block" to centre the paper. Select adjustable cutters to set hole punching.



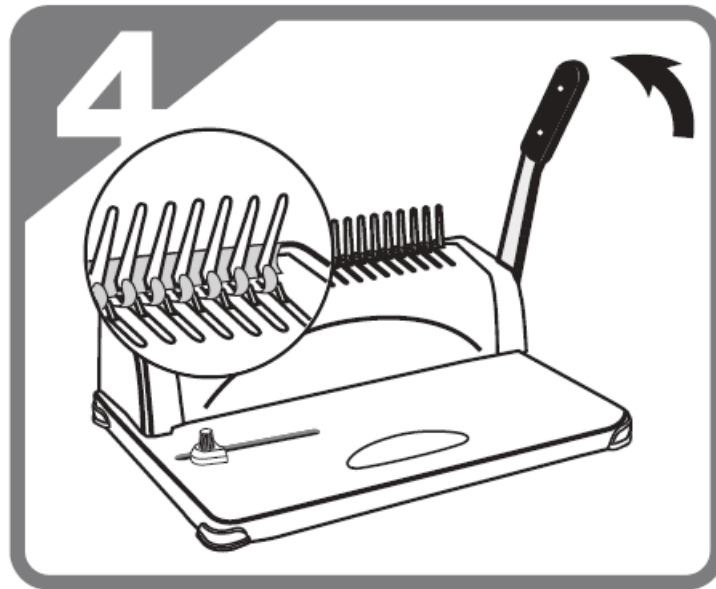
2. Pull down the handle to punch holes, then lift back to the original place.



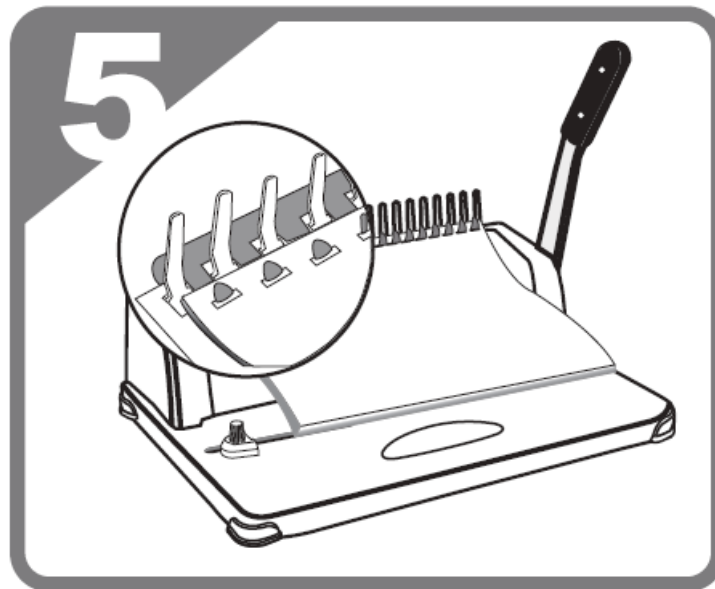
3. Place the plastic rings to the back of comb opening upward.



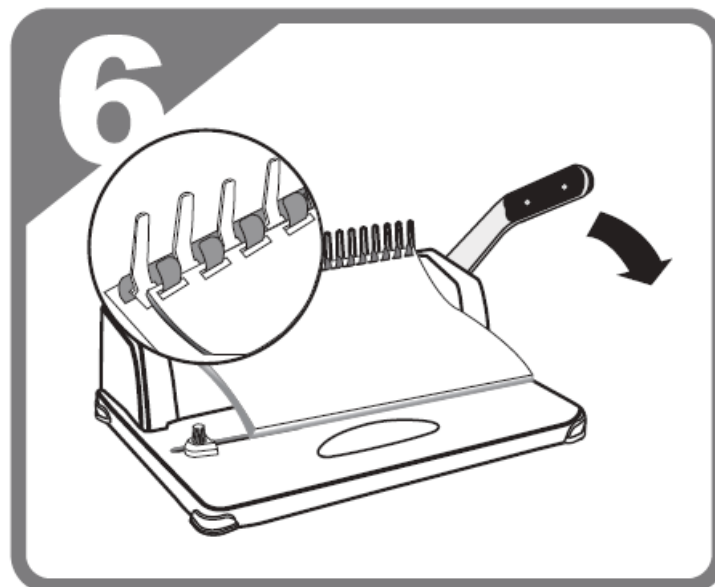
4. Push the handle backward and let the hooks engage the rings to open the plastic rings.



5. Insert the binded paper into the plastic rings.



6. Push the handle backward and finished of the Ille.



**Common fault analysis troubleshooting**

<b>Fault phenomenon</b>	<b>Fault cause analysis</b>	<b>Troubleshooting method</b>
It is hard to press the handle when paper punching	There is paper scrap or other hard object in the paper cutting port	Take out the sundries with chipboard.
	The operation is beyond the punching capacity described in the instruction.	Operate according to the requirements of the instruction.
The punching edge distance has inclination phenomenon.	The two sides of the incoming paper are unbalanced.	Take out the paper and then re-operate
	There is paper scrap or other hard object in the paper cutting port.	Take out the sundries with chipboard.
The open rubber ring has inclination phenomenon.	The comb plate has deformation caused by collision.	Straighten the comb plate with a ruler.
	The draw hook of pull ring plate has deformation.	Pull the pull ring to calibrate the draw hook with hands.
Incomplete paper punching or the paper is hard to draw out.	The number of pieces of paper for punching at a time is too large.	Reduce the punching thickness of each time (based on the requirements of the instruction)
The paper cannot reach the bottom.	The paper is unserviceable and the paper edge coils.	Smoothen the paper and then re-operate.

## Product parameters

Binding specification	A4 paper or below	Maximum punching number	21holes
Hole dimension Distance between holes	3mmx8mm /14.3mm	Margin Adjustable	3 mm/4 mm/5mm
Maximum binding thickness	350 pieces ( 70g/m <sup>2</sup> paper)	Maximum punching thickness	12pieces( 70g/m <sup>2</sup> paper)
Net weight	3.46kg	Overall dimension	385x275x360mm

## WARRANTY CARD

Thank you for your purchase of our products. The Interests of customers who purchase our products will be protected. Please contact authorized local dealers or service centers with this receipt and the warranty card for any malfunction due to product quality problems. warranty terms:

- For product failures occur under normal operating circumstances, free of charge repair and spare parts replacement service shall be provided by our company within one year commencing from date of purchase.
- Customers are required to present this warranty card and the original purchase invoice to our company upon request for warranty service. This warranty card shall be valid only after the following form is filled out in details and affixed with official seal of the dealer.
- No free of charge repair service shall be provided in the event of any of the following circumstances:
  - Expiration of the warranty period;
  - Damages caused by improper use, maintenance or storage not in accordance with the requirements

of the user manual;

3. Failure or damage resulting from unauthorized disassembly, repair or modification;

4. Failure or damage caused by force majeure;

4. Wear parts or accessories.

This warranty card is being delivered with the product, one card for one product. Please keep this warranty card in proper condition for free warranty service. There is no replacement if lost.

National service hotline: 400-185-0555

Purchase date: \_\_\_\_\_ Year \_\_\_\_ Month \_\_\_\_ Day

Product Information	Product Name		Serial Number		
	Product Model Number		Manufacturing Date		
Customer Information	Company Name			Contact	
	Address			Phone	
Sales Information	Dealer Name			Contact	
	Address			Phone	
	Date of Purchase			Invoice No.	
Maintenance Record	Description of Malfunction	Maintenance Results	Customer Signature	Maintenance Technician Signature	Maintenance Date

This copy shall be cut along the dotted line and kept by the dealer.



Product Information	Product Name		Serial Number		
	Product Model Number		Manufacturing Date		
Customer Information	Company Name			Contact	
	Address			Phone	
Sales Information	Dealer Name			Contact	
	Address			Phone	
	Date of Purchase			Invoice No.	
Maintenance Record	Description of Malfunction	Maintenance Results	Customer Signature	Maintenance Technician Signature	Maintenance Date

## DELI GROUP CO., LTD

- Address: Deli Industrial Park,
- Ninghai, Zhejiang
- National service hotline:
- 400-185-0555 [www.deliworld.com](http://www.deliworld.com)
- MADE IN CHINA

## Documents / Resources



## [deli 3870 Comb Binding Machine](#) [pdf] User Manual

3870 Comb Binding Machine, 3870, Comb Binding Machine, Binding Machine, Machine