



# DEFINITIVE TECHNOLOGY SoloCinema Studio Sound Bar User Guide

[Home](#) » [DEFINITIVE TECHNOLOGY](#) » DEFINITIVE TECHNOLOGY SoloCinema Studio Sound Bar User Guide 

D.  
DEFINITIVE TECHNOLOGY®

SoloCinema Studio™

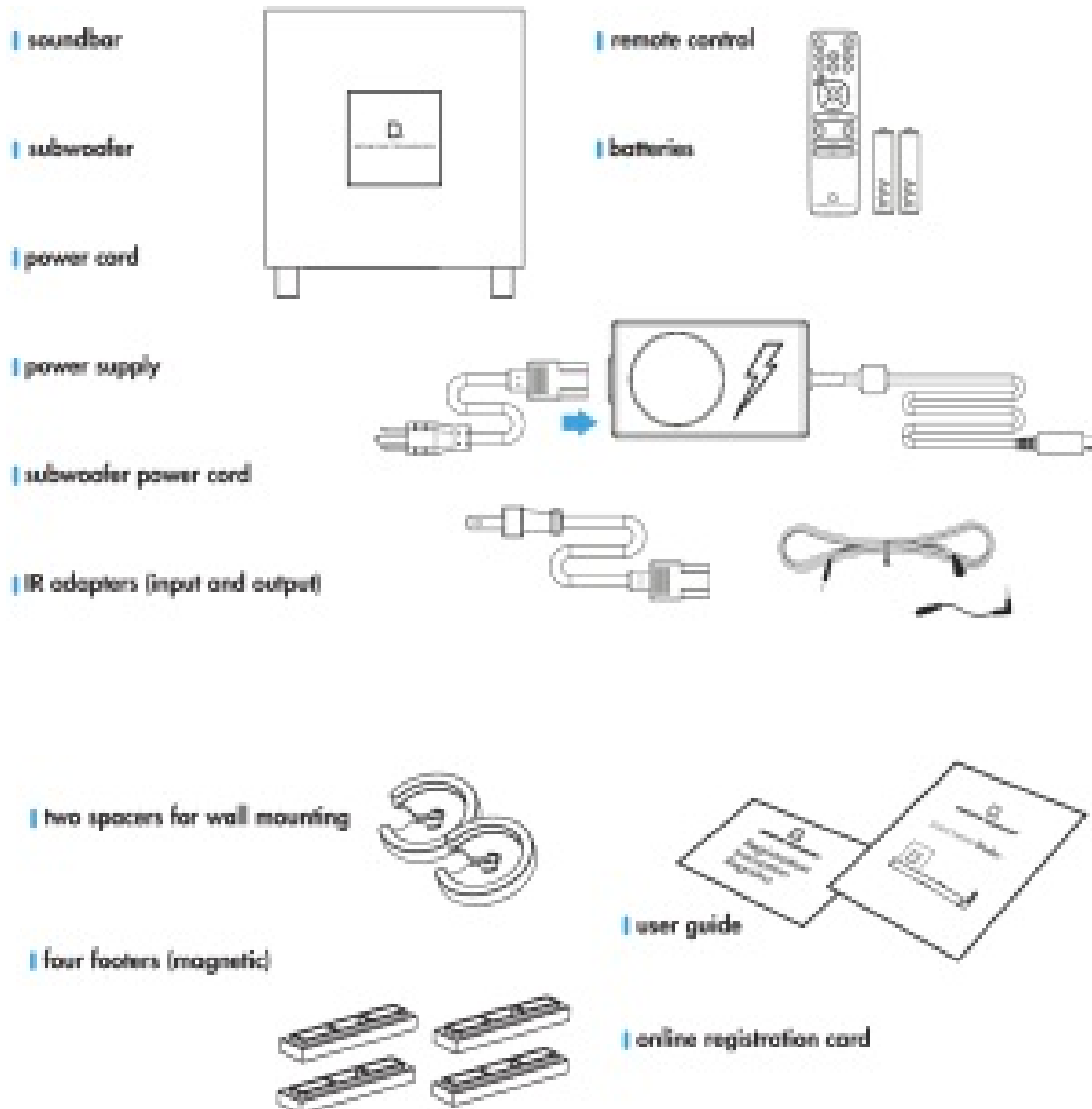


User Guide

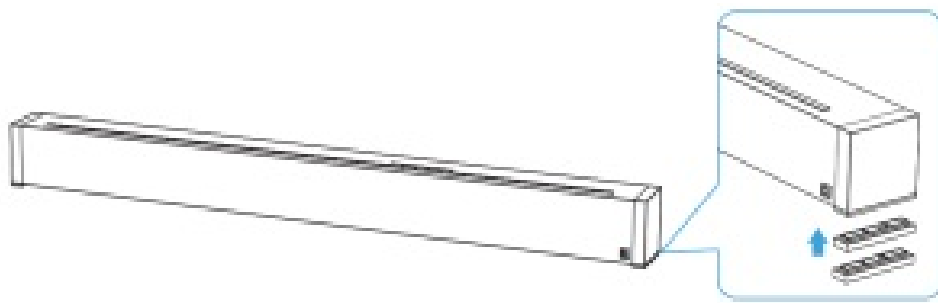
## Contents

- 1 What's in the box
- 2 Table-top mounting the soundbar
- 3 Wall mounting the soundbar
- 4 Connect with HDMI
- 5 Connecting with optical cable
- 6 Powered subwoofer
- 7 For more information
- 8 Control panel
- 9 Remote
- 10 Remote Batteries
- 11 Safety Precautions
- 12 Documents / Resources
- 13 Related Posts

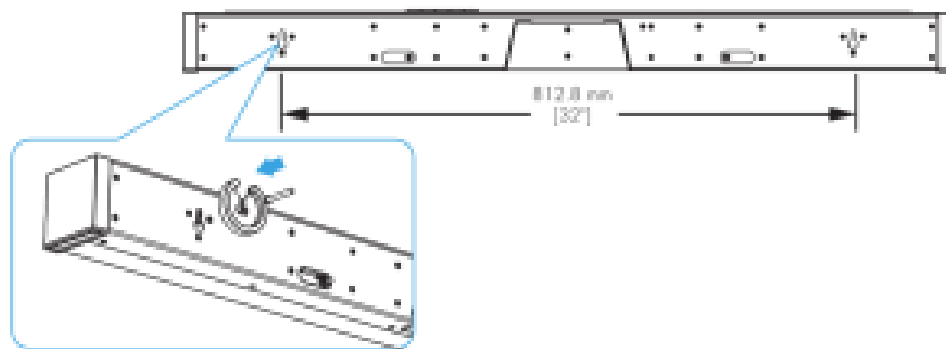
## What's in the box



## Table-top mounting the soundbar

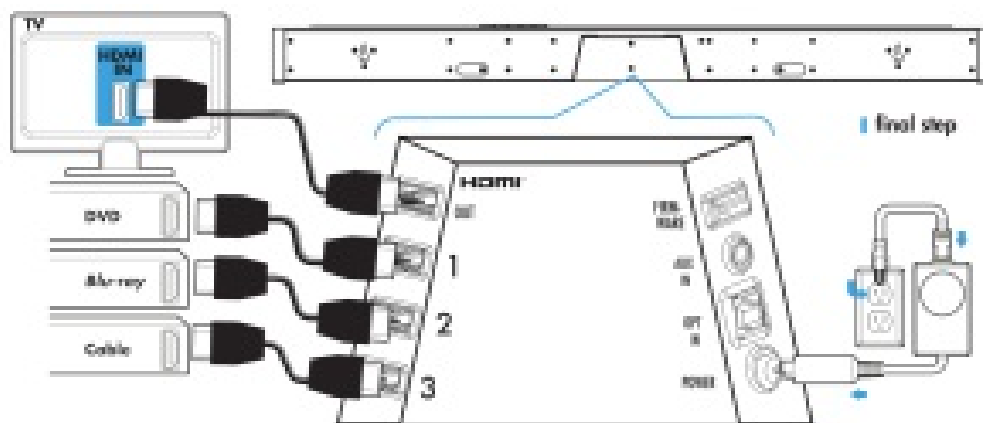


## Wall mounting the soundbar

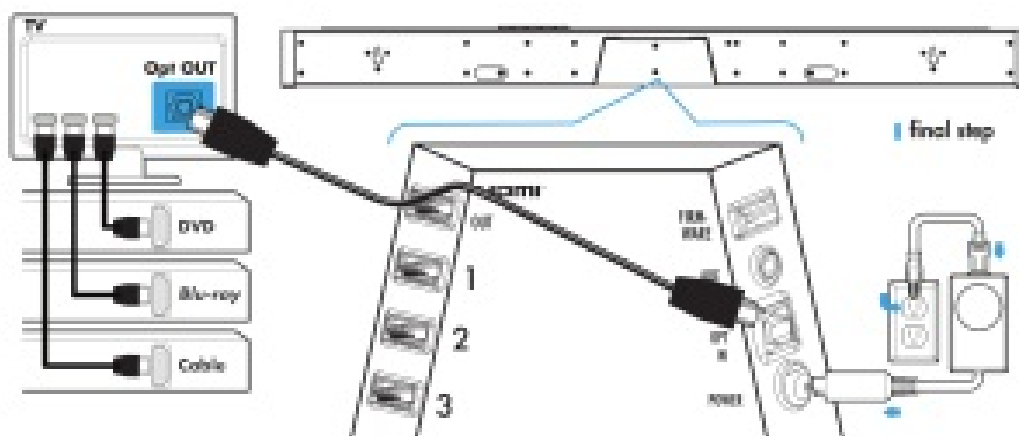


For full instructions on how on how to wall mount the system, see the manual.  
[www.definitivetech.com/SoloCinemaStudio/manual](http://www.definitivetech.com/SoloCinemaStudio/manual)

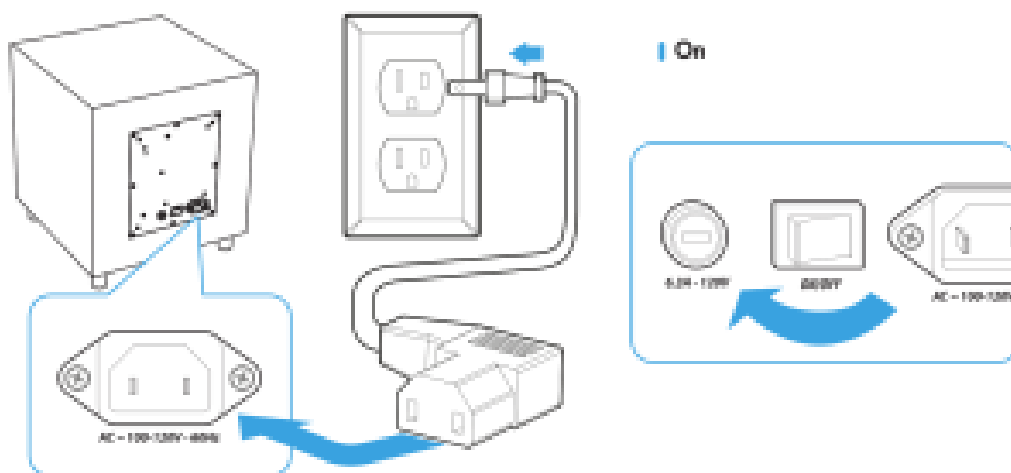
## Connect with HDMI



## Connecting with optical cable



## Powered subwoofer



## For more information

This quick reference guide provides the basic steps for connecting your SoloCinema Studio system to your TV/display device, and shows basic system usage. For detailed operation, please refer to owner's manual online.



[http://www.definitivetech.com/  
products/solocinemastudio](http://www.definitivetech.com/products/solocinemastudio)

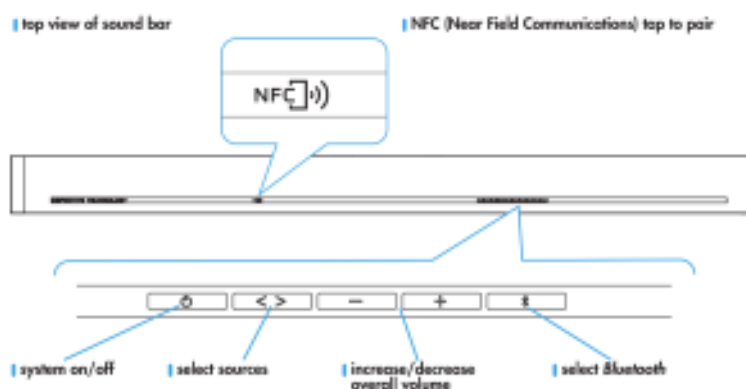


[www.definitivetech.com/  
SoloCinemaStudio/manual](http://www.definitivetech.com/SoloCinemaStudio/manual)



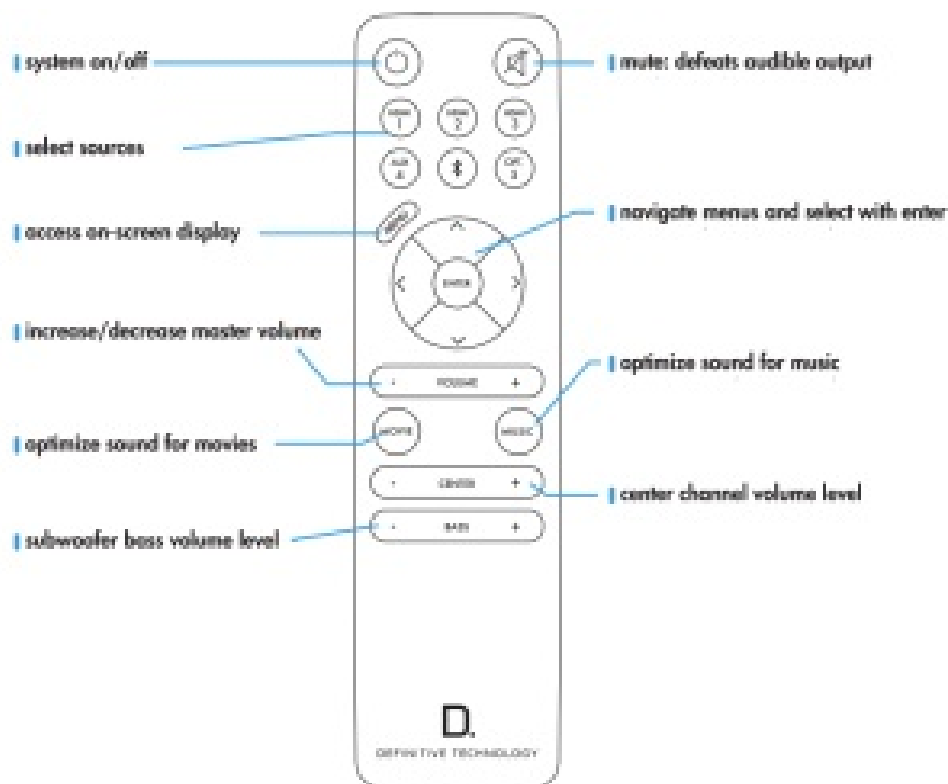
1-800-228-7148

## Control panel

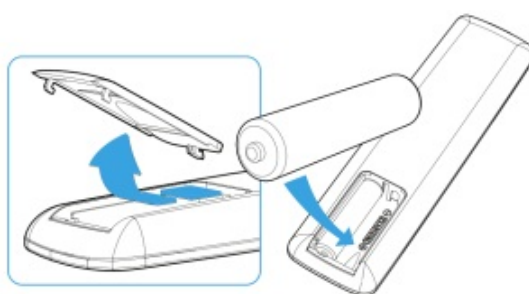


Press and hold to initiate Bluetooth pairing and press once to select the Bluetooth source. For full instructions see the manual. [www.definitivetech.com/SoloCinemaStudio/manual](http://www.definitivetech.com/SoloCinemaStudio/manual)

## Remote



## Remote Batteries



**CAUTION**  
RISK OF ELECTRIC SHOCK  
DO NOT OPEN

**WARNING:** To reduce the risk of fire or electric shock, do not expose this apparatus to rain or moisture. **WARNING:** Batteries (battery pack or batteries installed) shall not be exposed to excessive heat such as sunshine, fire or the like. No naked flame sources – such as candles – should be placed on the product.

## Safety Precautions

**FCC Statement:** 1. This device complies with Part 15 of the FCC Rules. Operation is subject to the following two conditions: (1) This device may not cause harmful interference. (2) This device must accept any interference received, including interference that may cause undesired operation. 2. Changes or modifications not expressly approved by the party responsible for compliance could void the user's authority to operate the equipment. **NOTE:** This equipment has been tested and found to comply with the limits for a Class B digital device, pursuant to Part 15 of the FCC Rules. These limits are designed to provide reasonable protection against harmful interference in a residential installation. This equipment generates uses and can radiate radio frequency energy and, if not installed and used in accordance with the instructions, may cause harmful interference to radio communications. However, there is no guarantee that interference will not occur in a particular installation. If this equipment does cause harmful interference to radio or television reception, which can be determined by turning the equipment off and on, the user is encouraged to try to correct the interference by one or more of the following measures: Reorient or relocate the receiving antenna. Increase the separation between the equipment and receiver. Connect the equipment into an outlet on a circuit different from that to which the receiver is connected. Consult the dealer or an

experienced radio/TV technician for help. FCC Radiation Exposure Statement: This equipment complies with FCC radiation exposure limits set forth for an uncontrolled environment. This equipment should be installed and operated with minimum distance 20cm between the radiator & your body. IC Warning: This device complies with Industry Canada license-exempt RSS standard(s). Operation is subject to the following two conditions: (1) this device may not cause interference, and (2) this device must accept any interference, including interference that may cause undesired operation of the device. Changes or modifications not expressly approved by the party responsible for compliance could void the user's authority to operate the equipment. The battery or batteries shall not be exposed to excessive heat such as sunshine, fire or the like. 1. Read these instructions. 2. Keep these instructions. 3. Heed all warnings. 4. Follow all instructions. 5. Do not use this apparatus near water. 6. Clean only with dry cloth. 7. Do not block any ventilation openings. Install in accordance with the manufacturer's instructions. 8. Do not install near any heat sources such as radiators, heat registers, stoves, or other apparatus (including amplifiers) that produce heat. 9. Do not defeat the safety purpose of the polarized or grounding plug. A polarized plug has two blades with one wider than the other. A grounding plug has two blades and a third grounding prong. The wide blade or the third prong is provided for your safety. If the provided plug does not fit into your outlet, consult an electrician for replacement of the obsolete outlet. 10. Protect the power cord from being walked on or pinched particularly at the plugs, convenience receptacles, and at the point where they exit from the apparatus. 11. Only use attachments/ accessories specified by the manufacturer. 12. Use only with the cart, stand, tripod, bracket, or table specified by the manufacturer, or sold with the apparatus. When a cart or rack is used, use caution when moving the cart/apparatus combination to avoid injury from hp-over. 13. Unplug the apparatus during lightning storms or when unused for long periods of time. 14. Refer all servicing to qualified personnel. Servicing is required when the apparatus has been damaged in any way, such as when power supply cord or plug is damaged, liquid has been spilled or objects have fallen into the apparatus, or apparatus has been exposed to rain or moisture, does not operate normally, or has been dropped. 15. WARNING: To reduce the risk of fire or electric shock, do not expose this apparatus to rain or moisture. The apparatus shall not be exposed to dripping or splashing, and objects filled with liquids, such as vases, shall not be placed on apparatus. 16. WARNING: The mains plug/appliance coupler is used as disconnect device; the disconnect device shall remain readily operable. 17. This equipment is a Class II or double insulated electrical appliance. It has been designed in such a way that it does not require a safety connection to electrical earth. 18. This lightning flash with arrowhead symbol within an equilateral triangle is intended to alert the user to the presence of non-insulated "dangerous voltage" within the product's enclosure that may be of sufficient magnitude to constitute a risk of electric shock. Warning: To reduce the risk of electric shock, do not remove cover (or back) as there are no user-serviceable parts inside. Refer servicing to qualified personnel. The exclamation point within an equilateral triangle is intended to alert the user to the presence of important operating and maintenance instructions in the literature accompanying the appliance. 19. No naked flame sources, such as lighted candles, should be placed on the apparatus. 20. WARNING: The battery (battery or batteries or battery pack) shall not be exposed to excessive heat such as sunshine, fire or the like.

Manufactured under license from Dolby Laboratories. Dolby and the double-D symbol are registered trademarks of Dolby Laboratories.

Manufactured under license under U.S. Patent Nos: 5,956,674; 5,974,380; 6,487,535 & other U.S. and worldwide patents issued & pending.

DTS, the Symbol, & DTS and the Symbol together are registered trademarks & DTS Digital Surround and the DTS logos are trademarks of DTS, Inc. © DTS, Inc.

All Rights Reserved.

The terms HDMI and HDMI High-Definition Multimedia Interface, and the HDMI logo are trademarks or registered trademarks of HDMI Licensing LLC in the United States



is a trademark of SRS Labs, Inc. TruSurround HD4 technology is incorporated under license from SRS Labs, Inc.

The Bluetooth® word mark and logos are registered trademarks owned by Bluetooth SIG, Inc. and any use of such marks by Definitive Technology is under license. Other trademarks and trade names are those of their respective owners.

The "aptX®" software is copyright CSR plc or its group companies. All rights reserved.

The aptX® mark and the aptX logo are trademarks of CSR plc or one of its group companies and may be registered in one or more jurisdictions."



## DEFINITIVE TECHNOLOGY®

Register your new Definitive product

You could win a FREE powered subwoofer worth MOO retail value\*

There are important benefits to registering your new Definitive Technology product

- We'll automatically enter your name into a monthly drawing for a FREE MOO powered subwoofer\*
- You'll have peace of mind knowing that we have a permanent record of your product purchase for warranty verification (with upload of receipt scan)
- You'll be assured of receiving service/upgrade alerts
- It's fast and easy
- Privacy. The data we gather during on-line registration is never sold

[www.DefinitiveTech.com/registration](http://www.DefinitiveTech.com/registration)

\* Definitive Technology ProSub 800 or equivalent. See Official Rules for Details. No purchase necessary. Sweepstakes void outside the 50 United States and the District of Columbia, and where prohibited by law. Failure to complete and submit the product registration form does not diminish your warranty rights. Warranties apply as stated in the product manual. Please be sure to keep your original purchase receipt.

### No Internet access?

Call Definitive Technology Customer Service M-F 9:30 AM – 6:00 PM US Eastern Standard Time at (410) 363-7148, and we'll help you with the simple registration process. Or you can send us a letter to Definitive Warranty Registration at the address below with your name, address, phone number, serial number(s) of the product(s) and a photocopy of your sales receipt. Your name will be entered into the drawing regardless of how you choose to register.



## DEFINITIVE TECHNOLOGY®

11433 Cronridge Dr. Suite K  
Owings Mills, MD 21117 (410) 3637148

[info@DefinitiveTech.com](mailto:info@DefinitiveTech.com)

Designed and Engineered in U.S.A. and Canada. Mode in Chino.

### Documents / Resources



[DEFINITIVE TECHNOLOGY SoloCinema Studio Sound Bar](#) [pdf] User Guide  
SoloCinema Studio, Sound Bar, SoloCinema Studio Sound Bar