



# DEFINITIVE TECHNOLOGY DW Series MAX In Wall Speaker Installation Guide

[Home](#) » [DEFINITIVE TECHNOLOGY](#) » **DEFINITIVE TECHNOLOGY DW Series MAX In Wall Speaker Installation Guide** 

# D.

## DEFINITIVE TECHNOLOGY

### INSTALLATION INSTRUCTIONS

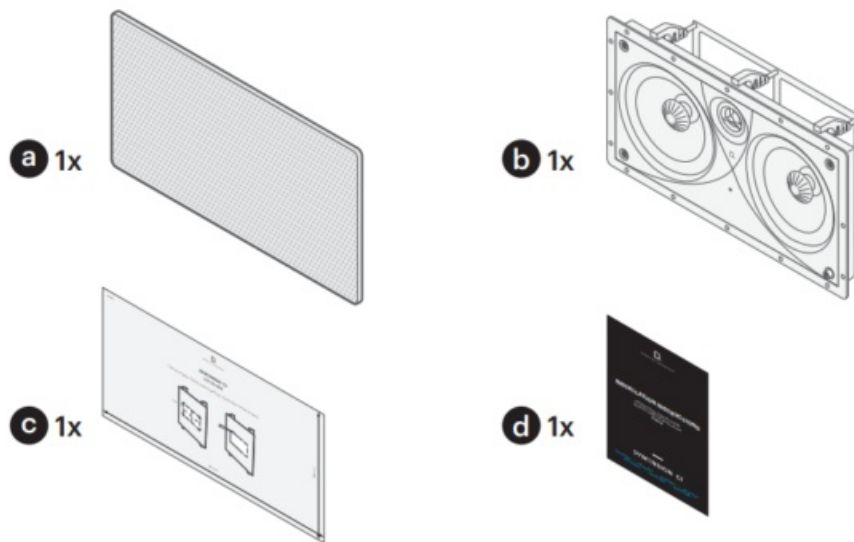
### **DYME<sup>®</sup>NSION CI<sup>™</sup>**

DW-65 PRO<sup>™</sup> | DW-80 PRO<sup>™</sup> | DW-45 MAX<sup>™</sup> | DW-65 MAX<sup>™</sup>  
LCR-525 MAX<sup>™</sup> | LCR-650 MAX<sup>™</sup> | DW-MAX SUR<sup>™</sup>

#### Contents

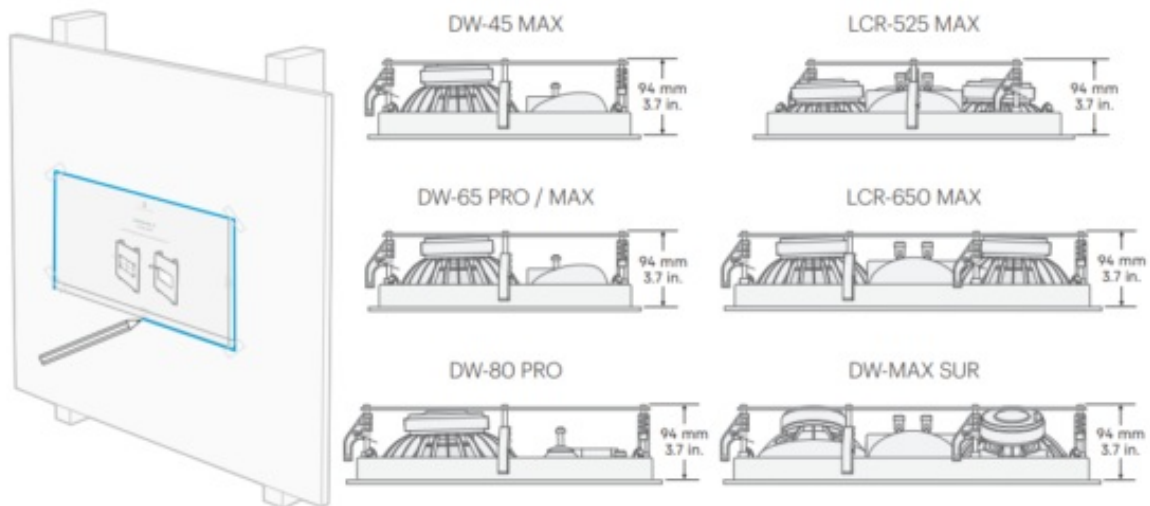
- 1 [Unpack](#)
- 2 [Mark Speaker Location](#)
- 3 [Cut Wall Opening](#)
- 4 [Detach Speaker Frame](#)
- 5 [Install Speaker Frame](#)
- 6 [Connect Speaker Cable](#)
- 7 [Install Speaker Assembly](#)
- 8 [Aim Tweeter](#)
- 9 [Set High Frequencies](#)
- 10 [Paint Grille \(Optional\)](#)
- 11 [Attach Grille](#)
- 12 [Setup Is Complete!](#)
- 13 [Documents / Resources](#)
  - 13.1 [References](#)
- 14 [Related Posts](#)

## Unpack



Check the box contents: (a) Grille, (b) Speaker with frame, (c) Cutout template and (d) Literature pack.

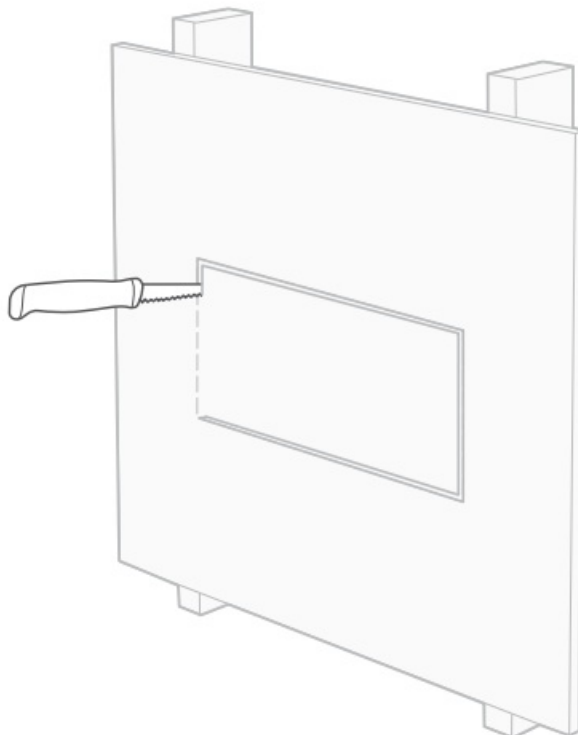
## Mark Speaker Location



1. Select a location for the speaker that has sufficient clearance behind the wall to avoid any interference with electrical wiring, plumbing or other fixtures.
2. Tape the supplied cutout template to the wall and trace a line around the template onto the wall.

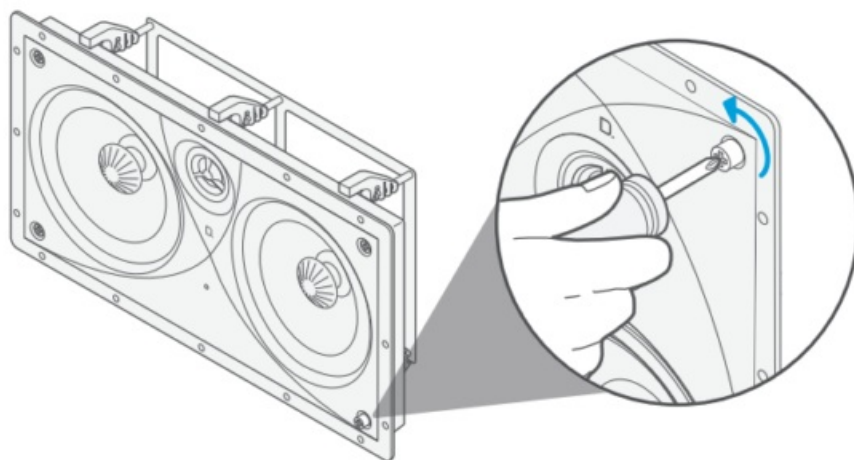
**Note:** We recommend using a level to ensure the template is mounted straight on the wall.

## Cut Wall Opening



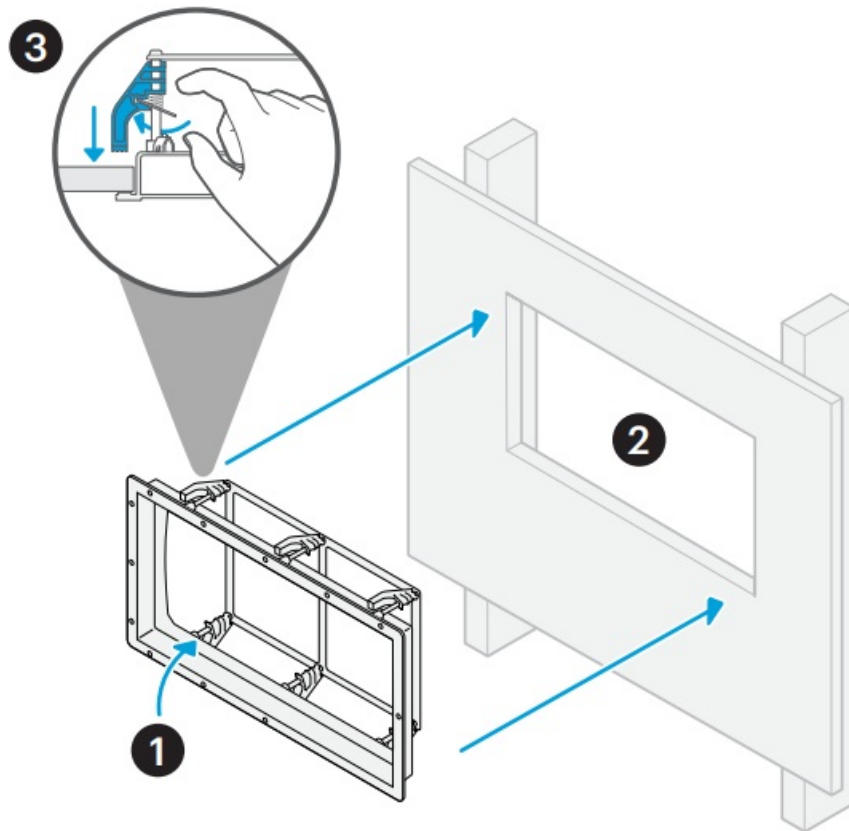
Remove the cutout template and cut along the marked line to create the opening. Be careful not to cut too large an opening.

### **Detach Speaker Frame**



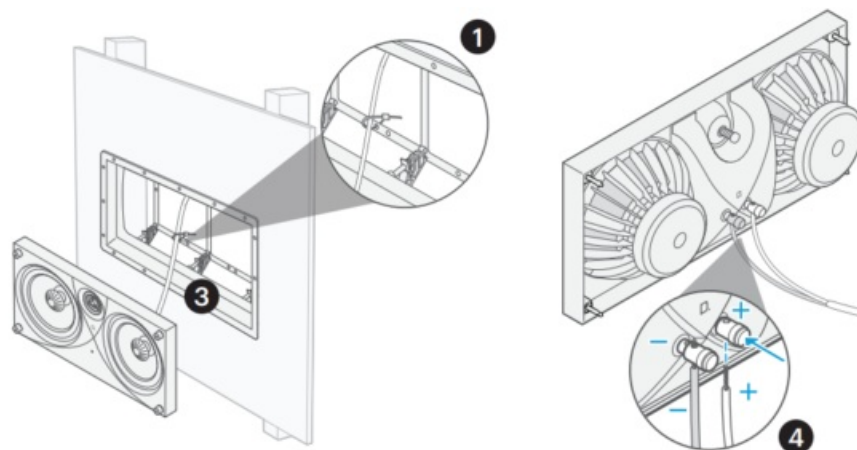
1. Use a screwdriver to turn each of the spring-loaded screws a half turn until they pop up.
2. Remove the speaker assembly from the frame.
3. Turn the screws back to the original position (so the surface of the screw head matches the contour of the speaker) before installing the frame in the wall.

### **Install Speaker Frame**



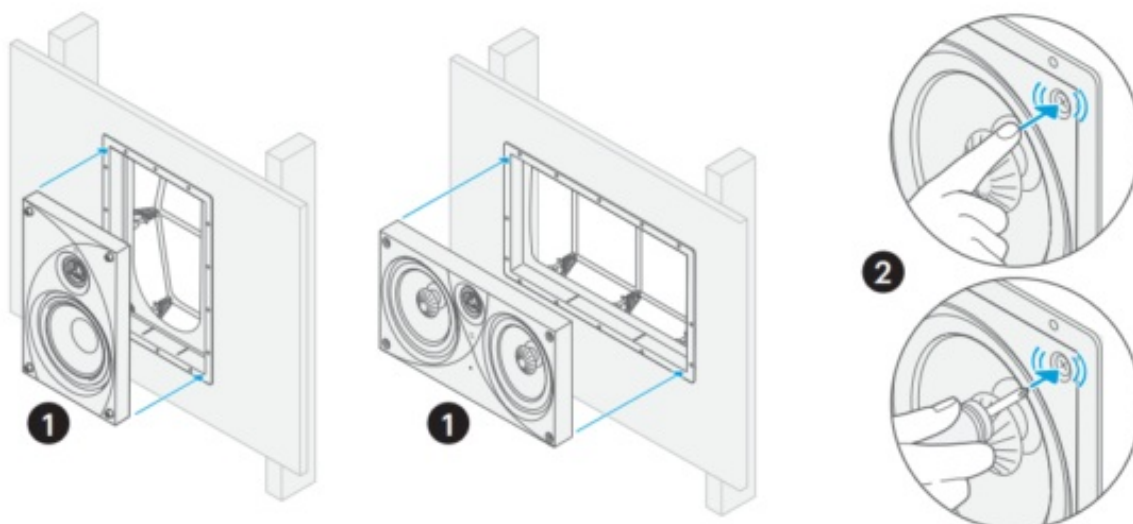
1. Ensure the mounting clamps are in the retracted position.
2. Insert the frame into the opening until the flange contacts the wall.
3. While holding the frame in place, rotate the mounting clamps outwards, then pull them against the wall to securely clamp the frame.

### Connect Speaker Cable



1. Secure the speaker cable to the frame with a cable tie through the frame holes.
2. If the speaker cable is connected to an amplifier, turn off the amplifier.
3. Pull a maximum of 1 meter (3.28 ft.) of speaker cable out through the opening.
4. On the speaker assembly, push down the spring terminals and insert the speaker wires, ensuring the polarity is correct.

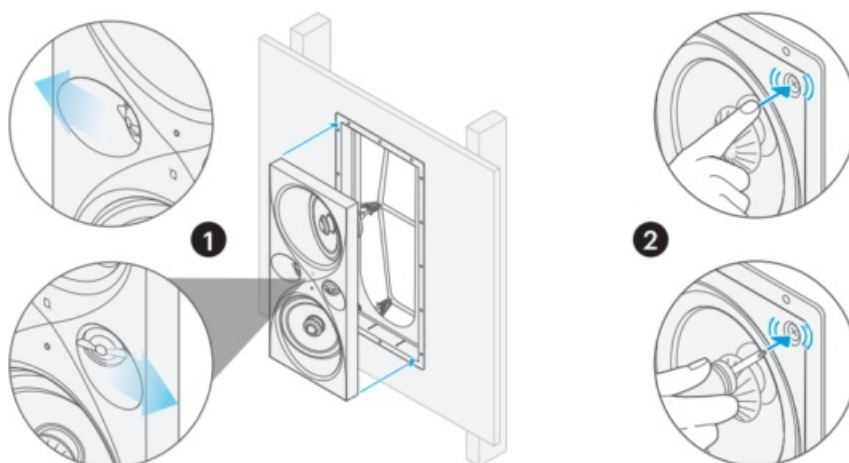
### Install Speaker Assembly



1. Insert the speaker assembly into the frame.
2. Push the four fastener heads in with your finger or a screwdriver until they click into place.

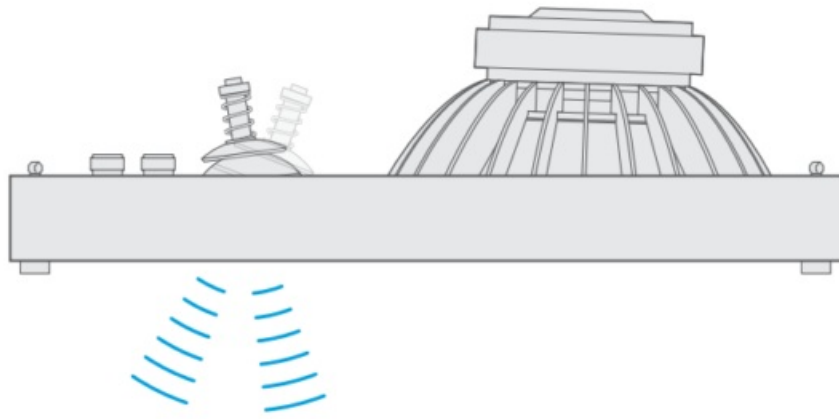
### Install Speaker Assembly

#### DW-MAX SUR



1. Insert the speaker assembly into the frame, ensuring proper orientation by aiming the primary tweeter toward the primary listening area: The primary tweeter is on the right when the “D” logo is correctly oriented. Note that some applications may require the speaker to be installed with the “D” logo upside down.
2. Push the four fastener heads in with your finger or a screwdriver until they click.

### Aim Tweeter

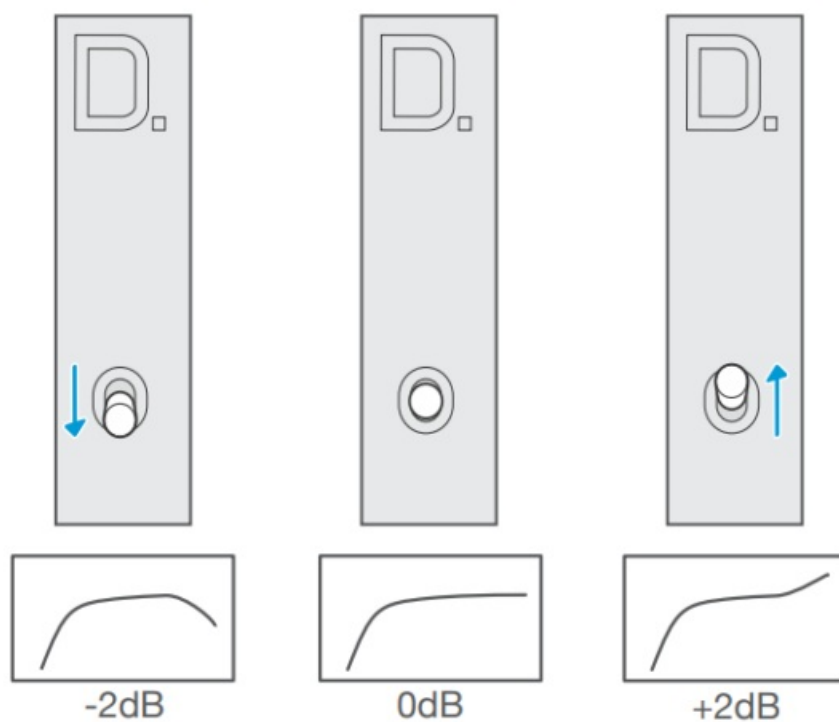


Aim the pivoting tweeter toward the primary listening position.

**CAUTION:** Do not push on the tweeter diaphragm as this can damage it. Always push on the outer part of the tweeter housing only.

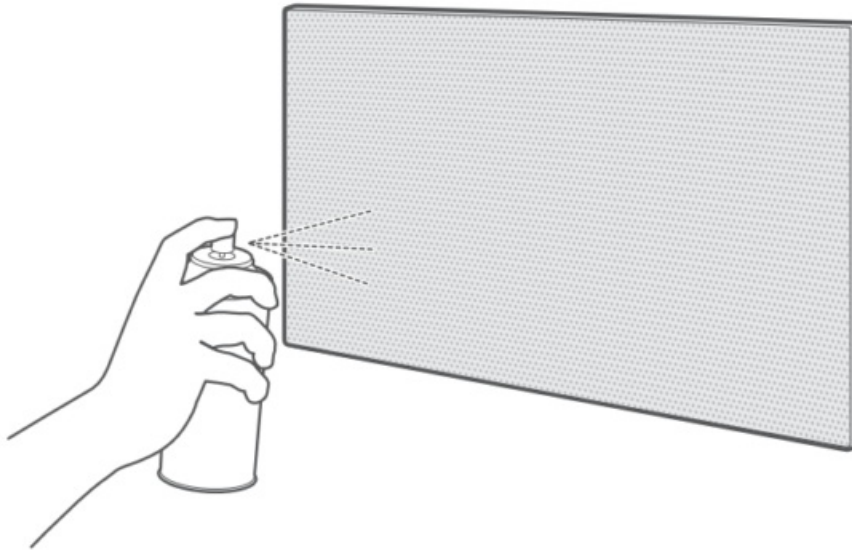
## Set High Frequencies

DW-45 MAX / DW-65 MAX / LCR-525 MAX / LCR-650 MAX / DW-MAX SUR



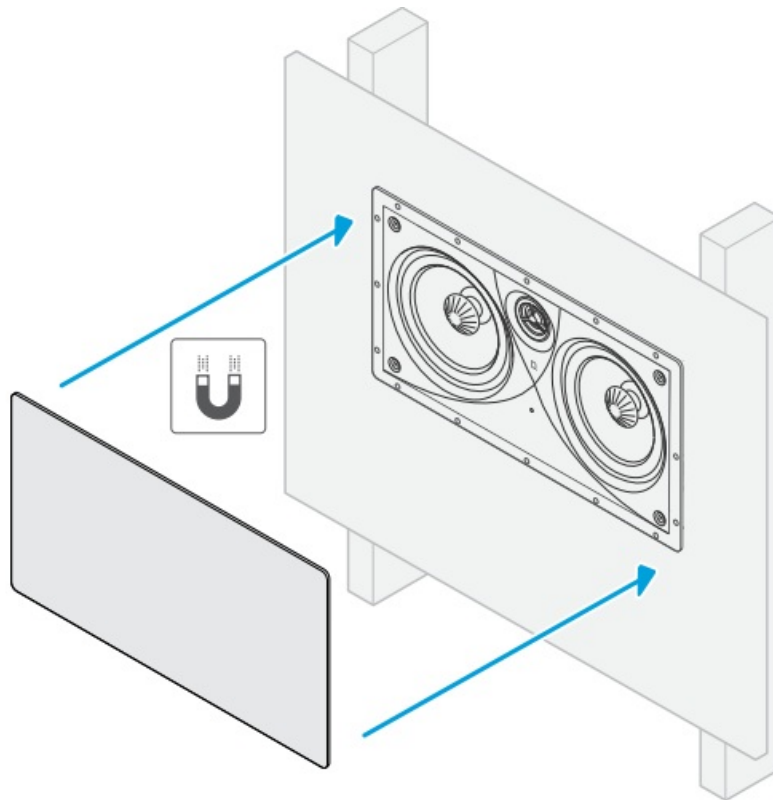
Set the High-Frequency (HF) selector for the desired high-frequency balance. The options are: -2dB high-shelf cut, 0dB (neutral) or +2dB high-shelf boost.

## Paint Grille (Optional)



If required, paint the grille before installing it. After painting the grille, make sure that the grille holes are not clogged.

### **Attach Grille**



Attach the grille to the speaker. The grille is held in place magnetically and will attach securely to the speaker when held near the speaker.

**Setup Is Complete!**



[support.definitivetechology.com](https://support.definitivetechology.com)

The speaker is now installed and ready for use. Scan the QR code or visit the URL for product support.

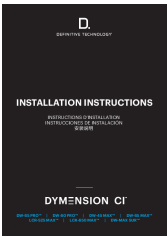
WHAT OBSESSION SOUNDS LIKE®

Share Photos



#Dymension

## Documents / Resources

	<p><a href="#">DEFINITIVE TECHNOLOGY DW Series MAX In Wall Speaker</a> [pdf] Installation Guide DW-65 PROTM, DW-80 PROTM, DW-45 MAXTM, DW-65 MAXTM, LCR-525 MAXTM, LCR-65 0 MAXTM, DW-MAX SURTM, DW Series MAX In Wall Speaker, DW Series, MAX In Wall Speaker, Wall Speaker, Speaker</p>
--	---

## References

- [D. Support Home Page](#)
- [User Manual](#)

[Manuals+](#), [Privacy Policy](#)

This website is an independent publication and is neither affiliated with nor endorsed by any of the trademark owners. The "Bluetooth®" word mark and logos are registered trademarks owned by Bluetooth SIG, Inc. The "Wi-Fi®" word mark and logos are registered trademarks owned by the Wi-Fi Alliance. Any use of these marks on this website does not imply any affiliation with or endorsement.