

D.
DEFINITIVE TECHNOLOGY
**DEFINITIVE
TECHNOLOGY DC-80
Pro In Ceiling Speaker**



DEFINITIVE TECHNOLOGY DC-80 Pro In Ceiling Speaker Installation Guide

[Home](#) » [DEFINITIVE TECHNOLOGY](#) » **DEFINITIVE TECHNOLOGY DC-80 Pro In Ceiling Speaker Installation Guide** 

Contents

- [1 DEFINITIVE TECHNOLOGY DC-80 Pro In Ceiling Speaker](#)
- [2 Product Usage Instructions](#)
- [3 Unpack](#)
- [4 Mark Speaker Location](#)
- [5 Cut Ceiling Opening](#)
- [6 Detach Speaker Frame](#)
- [7 Install Speaker Frame](#)
- [8 Connect Speaker Cable](#)
- [9 Install Speaker Assembly](#)
- [10 Aim Speaker](#)
- [11 Aim Tweeter](#)
- [12 Set High Frequencies](#)
- [13 Paint Grille \(Optional\)](#)
- [14 Attach Grille](#)
- [15 Setup Is Complete!](#)
- [16 Documents / Resources](#)
 - [16.1 References](#)
- [17 Related Posts](#)

D.

DEFINITIVE TECHNOLOGY

DEFINITIVE TECHNOLOGY DC-80 Pro In Ceiling Speaker



Specifications:

- Models: DC-65 PROTM, DC-65 PRO SITM, DC-80 PROTM, DC-65 MAXTM, DC-80 MAXTM, DC-80 MAX SURTM
- Speaker Sizes:
 - DC80PRO: 128 mm (5.01 in.), 219.6 mm (8.65 in)
 - DC65PRO/PROSI: 109 mm (4.3 in.)
 - DC65MAX: 132 mm (5.2 in.)
 - DC80MAX/MAXSUR: 137 mm (5.4 in.)

Product Usage Instructions

Unpack

Check the box contents for the following items: Grille, Speaker with frame, Cutout template, Literature pack.

Mark Speaker Location

Select a location for the speaker that has sufficient clearance above the ceiling to avoid any interference with electrical wiring, plumbing, or other fixtures. Tape the supplied cutout template to the ceiling and trace a line around the template onto the ceiling.

Cut Ceiling Opening

Remove the cutout template and cut along the marked line to create the opening. Be careful not to cut too large an opening.

Detach Speaker Frame

1. Use a screwdriver to turn each of the spring-loaded screws a half turn until they pop up.
2. Remove the speaker assembly from the frame.
3. Turn the screws back to the original position before installing the frame in the ceiling.

Install Speaker Frame

1. Ensure the mounting clamps are in the retracted position.
2. Insert the frame into the opening until the flange contacts the ceiling.
3. While holding the frame in place, rotate the mounting clamps outwards, then pull them against the ceiling to securely clamp the frame.

Connect Speaker Cable

1. Secure the speaker cable to the frame with a cable tie through the frame holes.
2. If the speaker cable is connected to an amplifier, turn off the amplifier.
3. Pull a maximum of 1 meter (3.28 ft.) of speaker cable out through the opening.
4. Push down the spring terminals; insert the speaker wires, matching amp polarity.

Install Speaker Assembly

1. Align the locking tab with the holes in the frame, then insert the speaker assembly into the frame.
2. Push each fastener head in until it clicks and locks.

Aim Speaker (DC-65 MAX / DC-80 MAX / DC-80 MAX SUR)

Aim the speaker toward the primary listening position.

CAUTION: Do not push on the speaker cone as this can damage it. Always push on the outer part of the speaker housing only.

Aim Tweeter (DC-65 PRO / DC-65 PRO SI / DC-80 PRO / DC-65 MAX / DC-80 MAX)

Aim the pivoting tweeter toward the primary listening position.

CAUTION: Do not push on the tweeter diaphragm as this can damage it. Always push on the outer part of the tweeter housing only.

Set High Frequencies (DC-65 MAX / DC-80 MAX / DC-80 MAX SUR)

Set the High Frequency (HF) select to +2dB for the desired high frequency balance options: 2dB high shelf cut, 0dB (neutral), or +2dB high shelf boost.

FAQ:

- **Q: How do I ensure proper speaker installation?**

A: Follow the step-by-step installation instructions provided in the manual to ensure proper speaker installation and performance.

- **Q: Can I install these speakers in a bathroom or outdoor area?**

A: It is recommended to check with local building codes and regulations before installing speakers in areas exposed to moisture or extreme weather conditions.

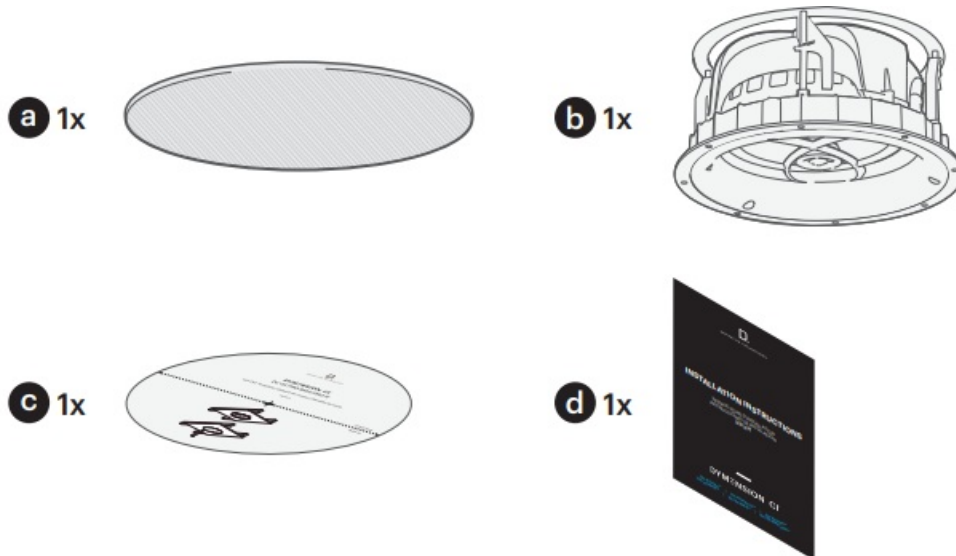
INSTALLATION INSTRUCTIONS

DC-65 PRO™ | DC-65 PRO SI™ | DC-80 PRO™
DC-65 MAX™ | DC-80 MAX™ | DC-80 MAX SUR™

Unpack

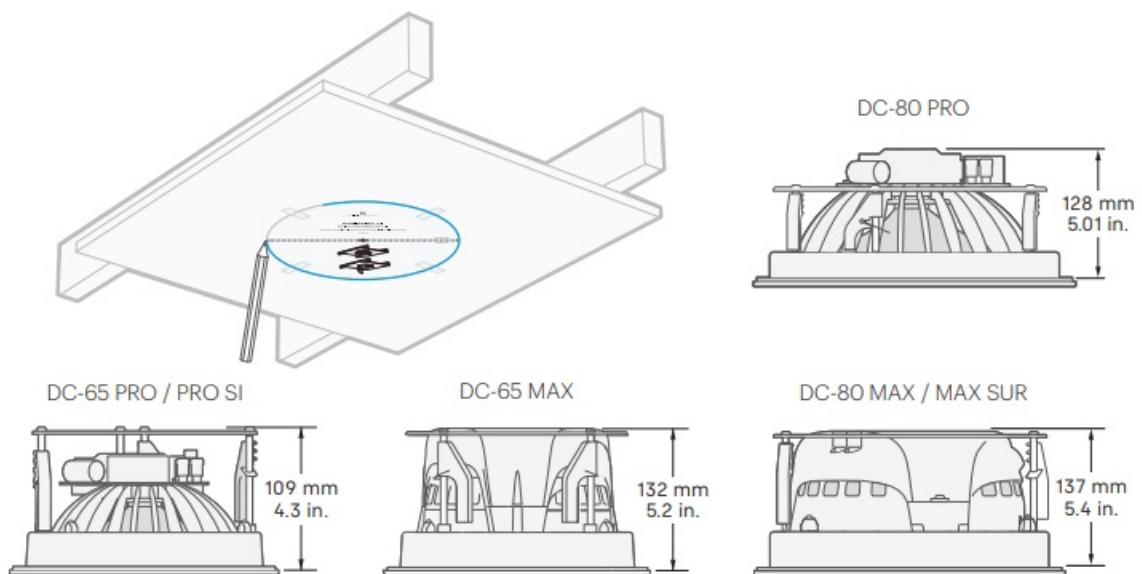
Check the box contents:

- (a) Grille,
- (b) Speaker with frame,
- (c) Cutout template and
- (d) Literature pack.



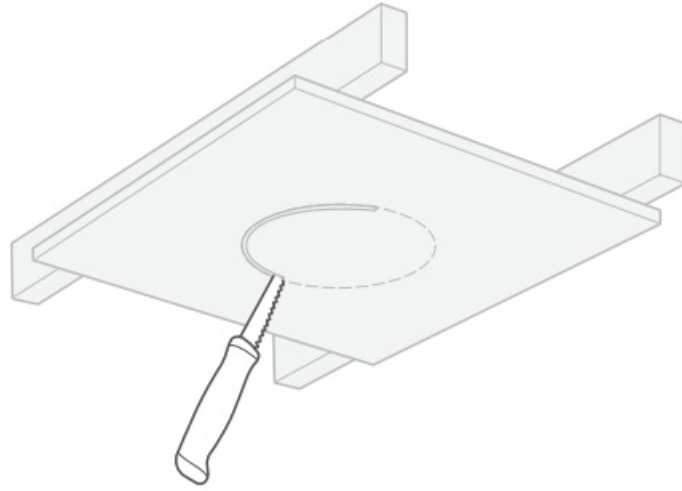
Mark Speaker Location

1. Select a location for the speaker that has sufficient clearance above the ceiling to avoid any interference with electrical wiring, plumbing or other fixtures.
2. Tape the supplied cutout template to the ceiling and trace a line around the template onto the ceiling.



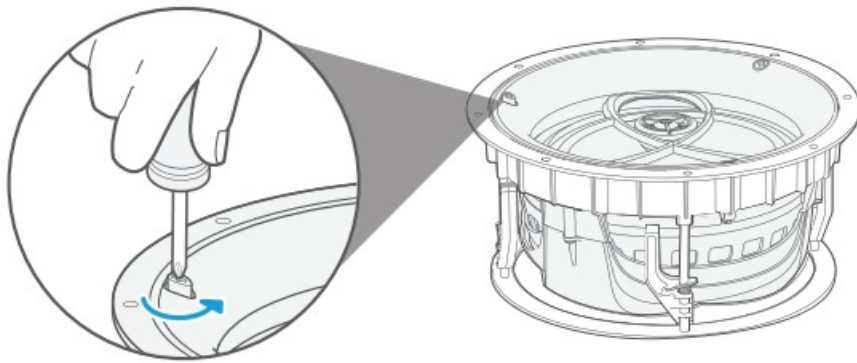
Cut Ceiling Opening

Remove the cutout template and cut along the marked line to create the opening. Be careful not to cut too large an opening.



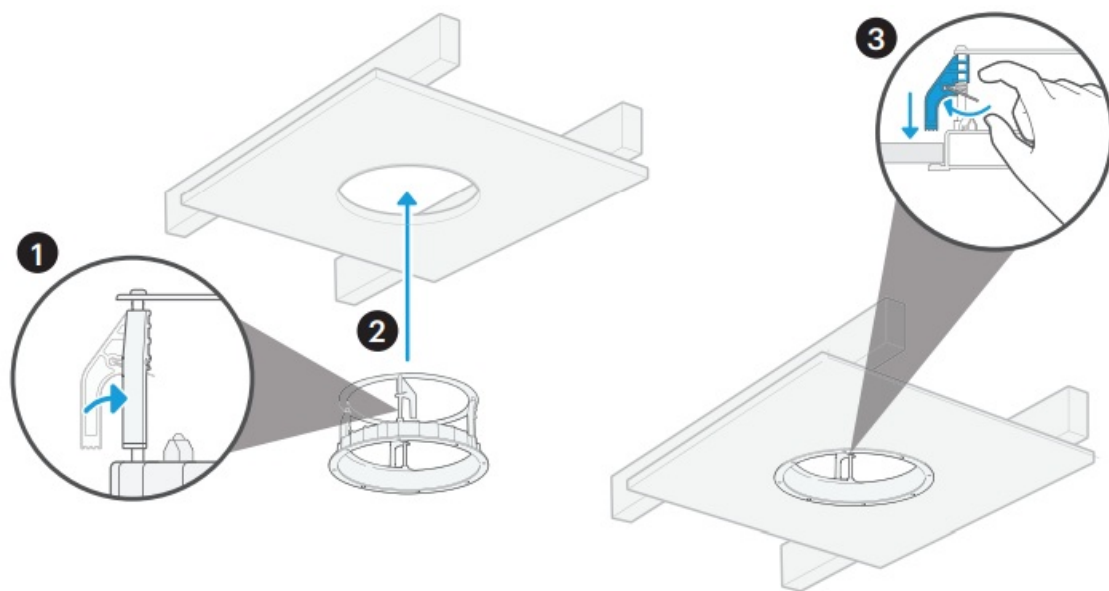
Detach Speaker Frame

1. Use a screwdriver to turn each of the spring-loaded screws a half turn until they pop up.
2. Remove the speaker assembly from the frame.
3. Turn the screws back to the original position (so the surface of the screw head matches the contour of the speaker) before installing the frame in the ceiling.



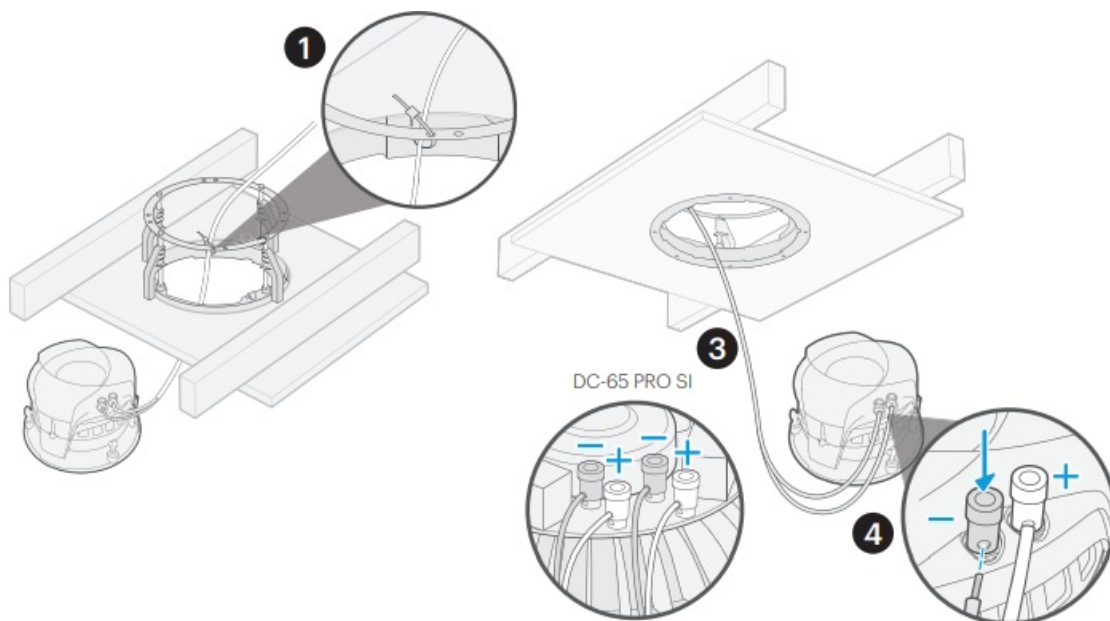
Install Speaker Frame

1. Ensure the mounting clamps are in the retracted position.
2. Insert the frame into the opening until the flange contacts the ceiling.
3. While holding the frame in place, rotate the mounting clamps outwards, then pull them against the ceiling to securely clamp the frame.



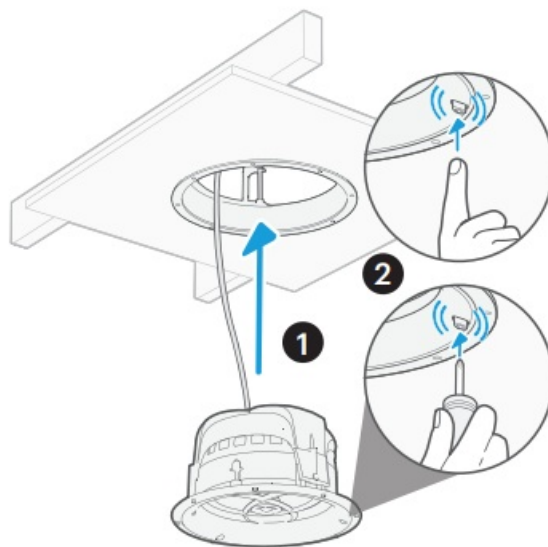
Connect Speaker Cable

1. Secure the speaker cable to the frame with a cable tie through the frame holes.
2. If the speaker cable is connected to an amplifier, turn off the amplifier.
3. Pull a maximum of 1 meter (3.28 ft.) of speaker cable out through the opening.
4. Push down the spring terminals; insert the speaker wires, matching amp polarity.



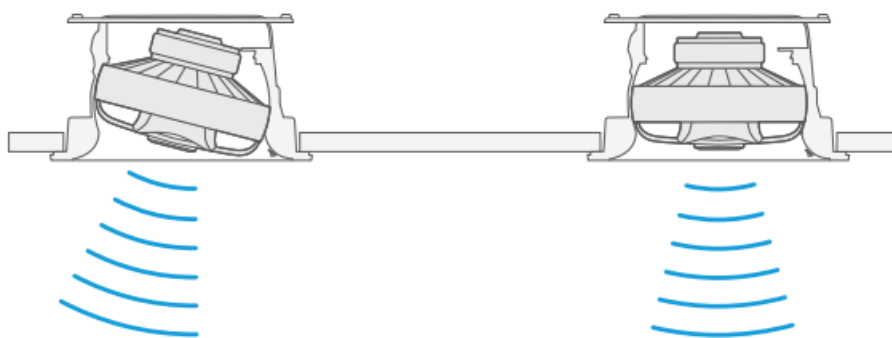
Install Speaker Assembly

1. Align the locking tabs with the holes in the frame, then insert the speaker assembly into the frame.
2. Push each fastener head in with your finger or a screwdriver until it clicks and locks.



Aim Speaker

DC-65 MAX / DC-80 MAX / DC-80 MAX SUR

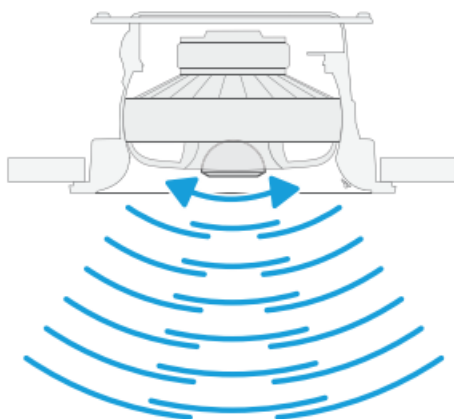


Aim the speaker toward the primary listening position.

CAUTION: Do not push on the speaker cone as this can damage it. Always push on the outer part of the speaker housing only.

Aim Tweeter

DC-65 PRO / DC-65 PRO SI / DC-80 PRO / DC-65 MAX / DC-80 MAX

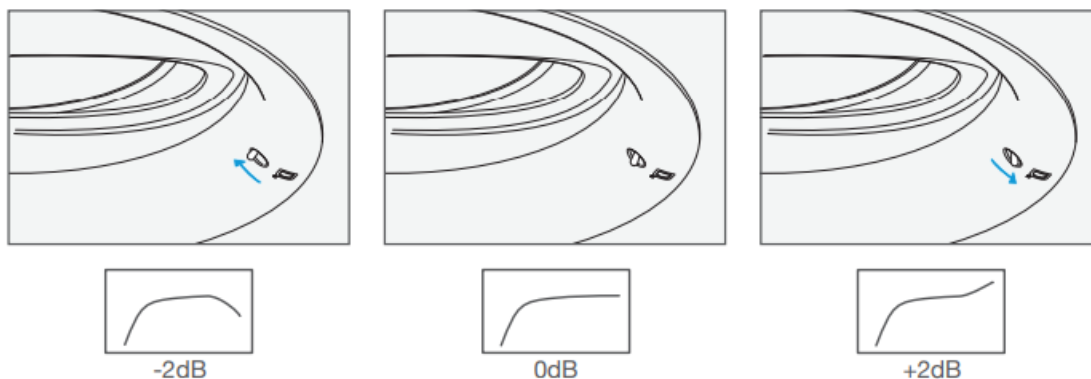


Aim the pivoting tweeter toward the primary listening position.

CAUTION: Do not push on the tweeter diaphragm as this can damage it. Always push on the outer part of the tweeter housing only. Note: DC-65 PRO SI has dual tweeters mounted to one pod that pivot together.

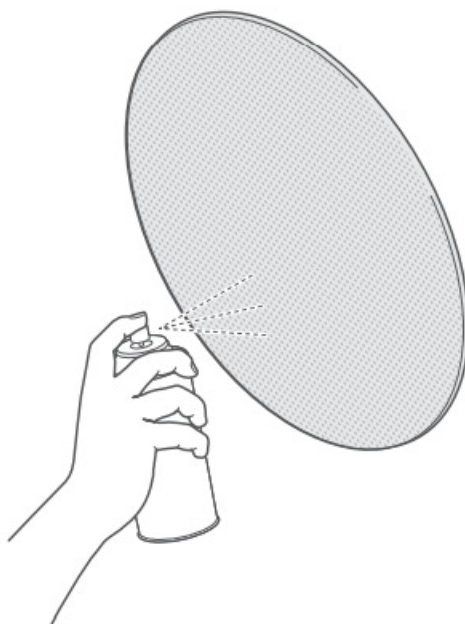
Set High Frequencies

DC-65 MAX / DC-80 MAX / DC-80 MAX SUR



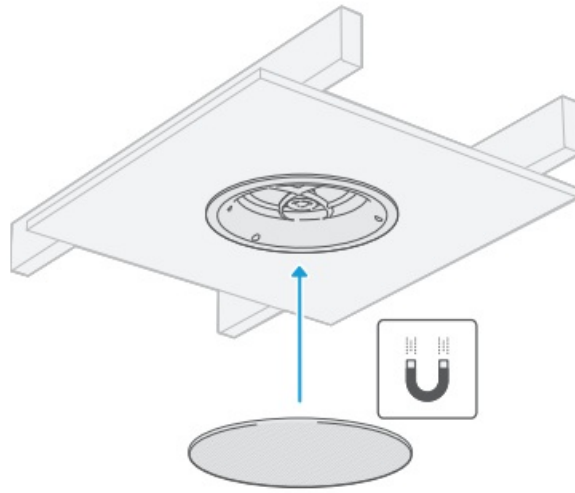
Set the High-Frequency (HF) selector for the desired high-frequency balance. The options are: -2dB high-shelf cut, 0dB (neutral) or +2dB high-shelf boost.

Paint Grille (Optional)



If required, paint the grille before installing it. After painting the grille, make sure that the grille holes are not clogged.

Attach Grille



Attach the grille to the speaker. The grille is held in place magnetically and will attach securely to the speaker when held near the speaker.

Setup Is Complete!



support.definitivetechology.com

The speaker is now installed and ready for use. Scan the QR code or visit the URL for product support.

WHAT OBSESSION SOUNDS LIKE®

Share Photos

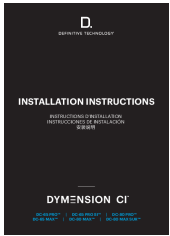


#Dymension

EU Contact:

- Sound United Europe,
- A division of D&M Europe B.V.
- Beemdstraat 11, 5653 MA
- Eindhoven, The Netherland

Documents / Resources



[DEFINITIVE TECHNOLOGY DC-80 Pro In Ceiling Speaker](#) [pdf] Installation Guide DC-80 Pro, DC-80 Pro In Ceiling Speaker, In Ceiling Speaker, Ceiling Speaker, Speaker

References

- [D. Support Home Page](#)
- [User Manual](#)

[Manuals+](#), [Privacy Policy](#)

This website is an independent publication and is neither affiliated with nor endorsed by any of the trademark owners. The "Bluetooth®" word mark and logos are registered trademarks owned by Bluetooth SIG, Inc. The "Wi-Fi®" word mark and logos are registered trademarks owned by the Wi-Fi Alliance. Any use of these marks on this website does not imply any affiliation with or endorsement.