




defender Eclipse 2.1 Speaker System Instruction Manual

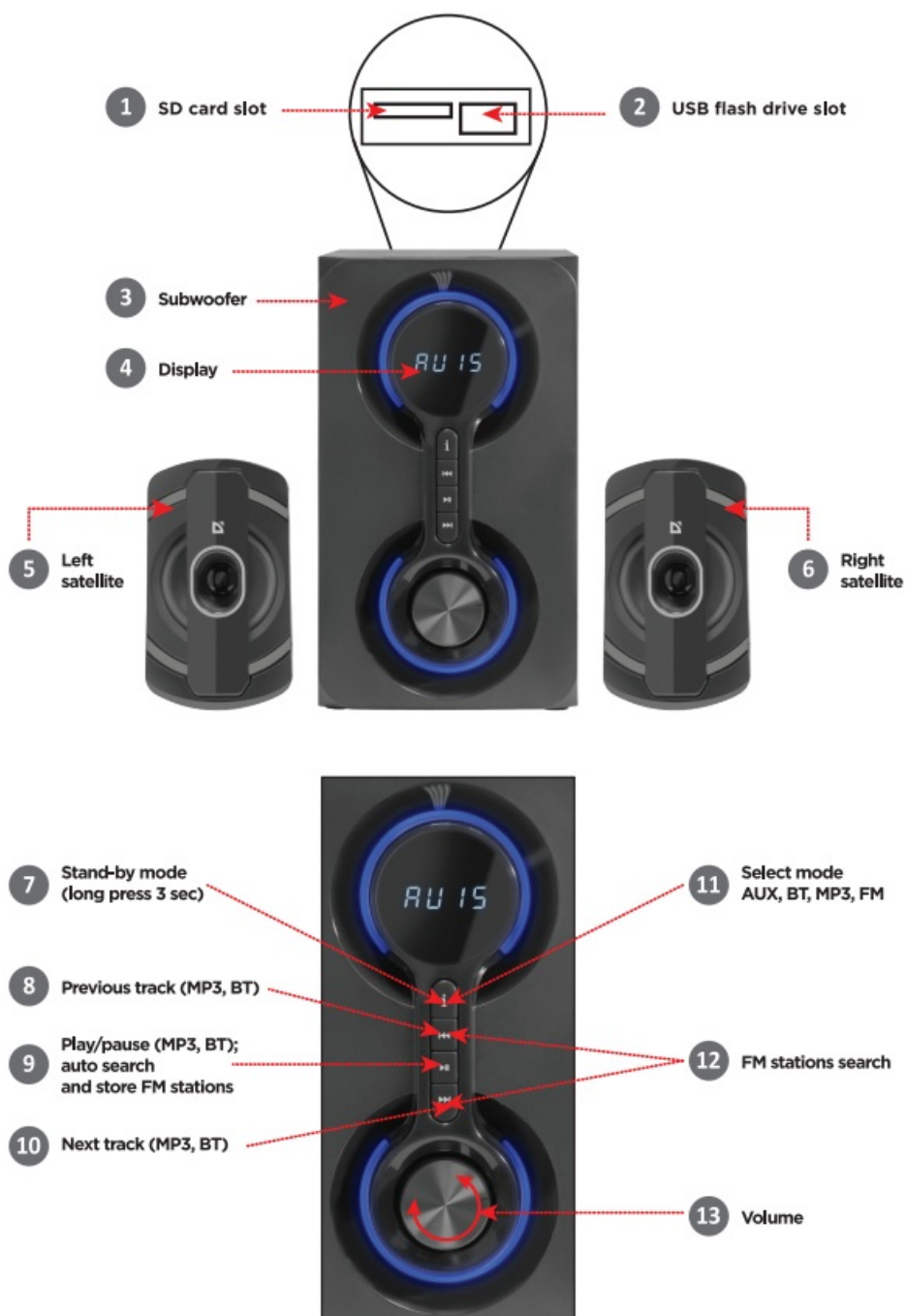
[Home](#) » [Defender](#) » defender Eclipse 2.1 Speaker System Instruction Manual 



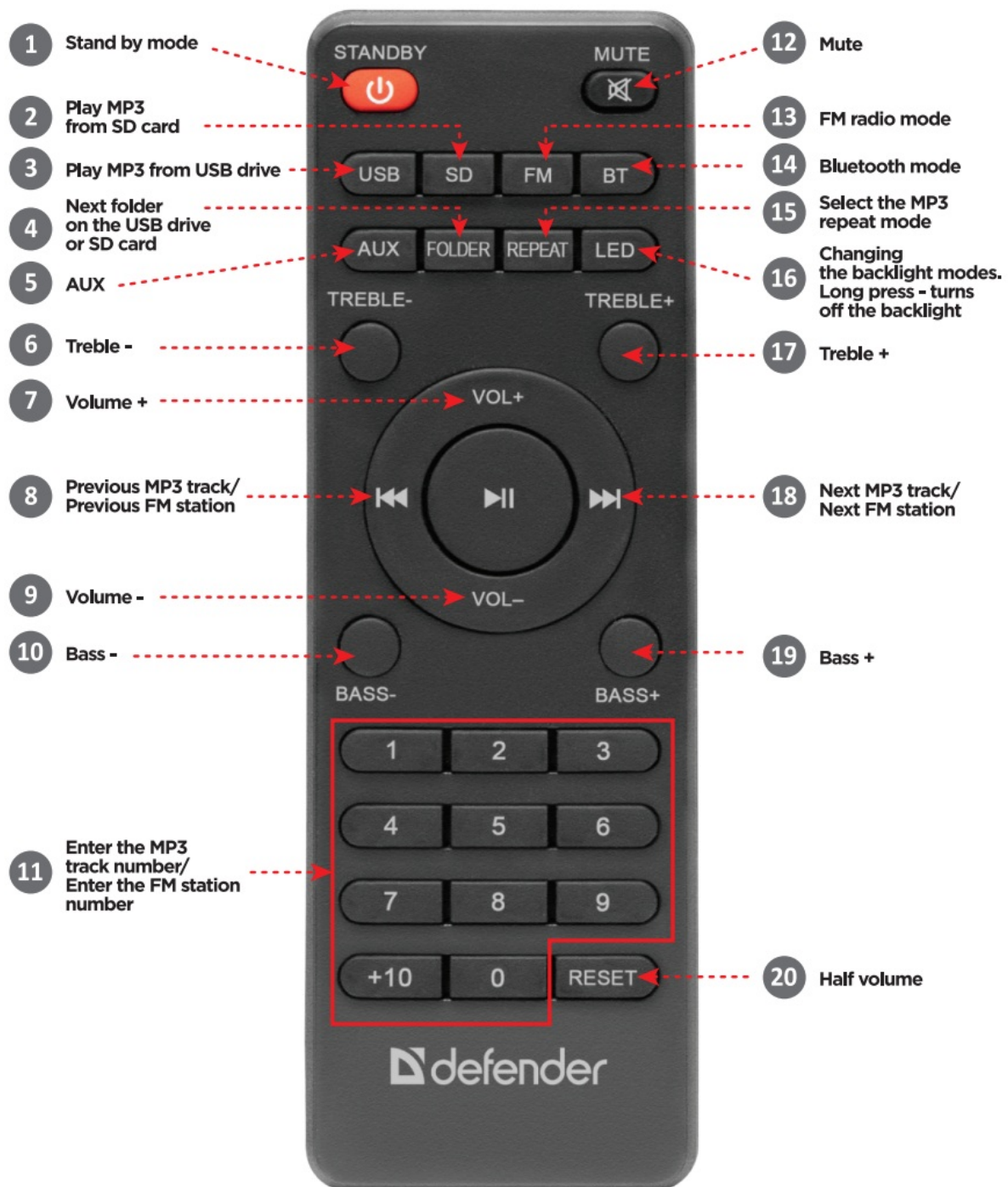
Contents

- 1 Front panel functions
- 2 Remote control
- 3 Connection
- 4 Playback via AUX
- 5 MP3 playback
- 6 Bluetooth playback
- 7 Listening FM
- 8 Declaration of Conformity
- 9 Specification
- 10 Documents / Resources
- 11 Related Posts

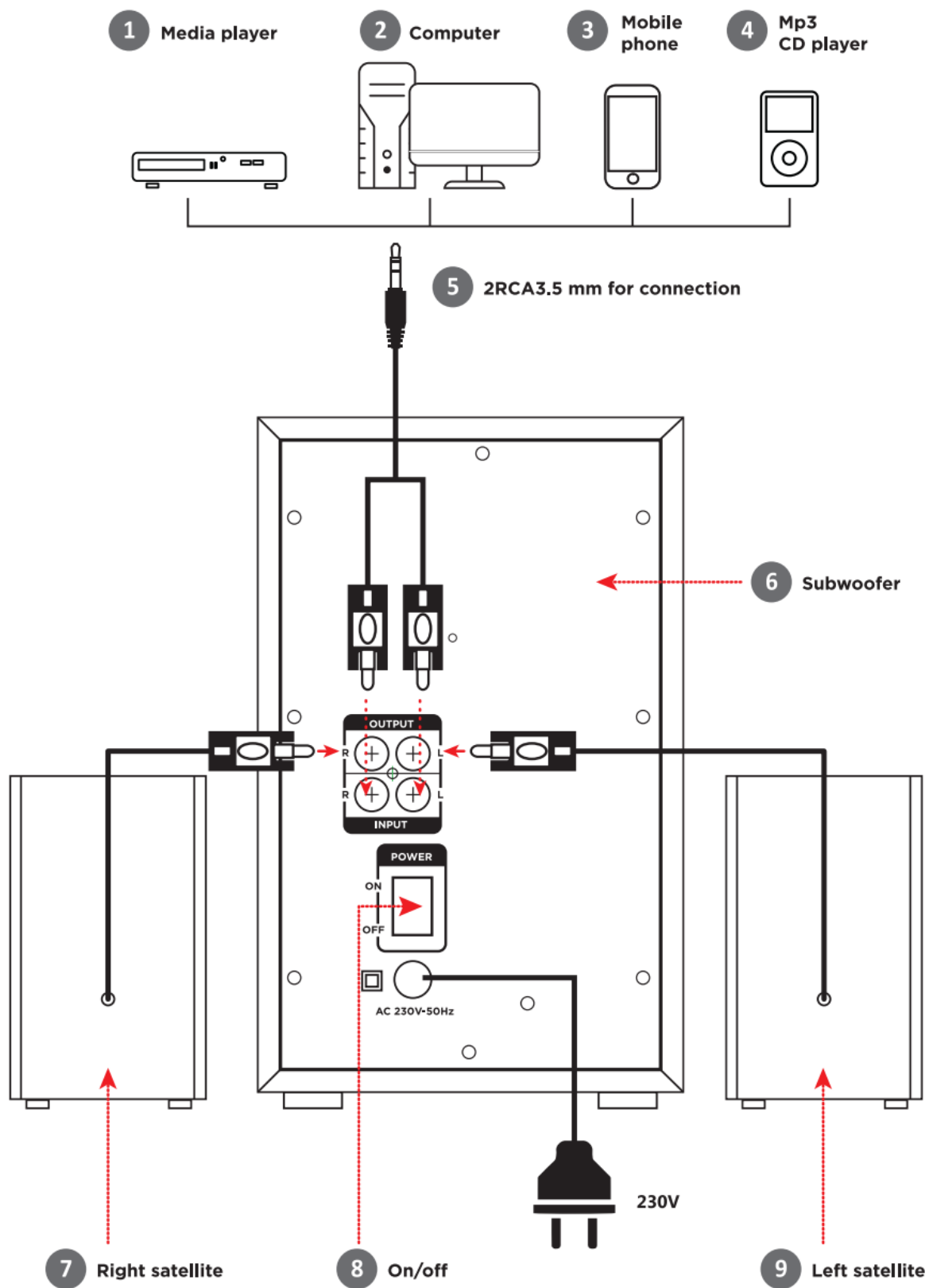
Front panel functions



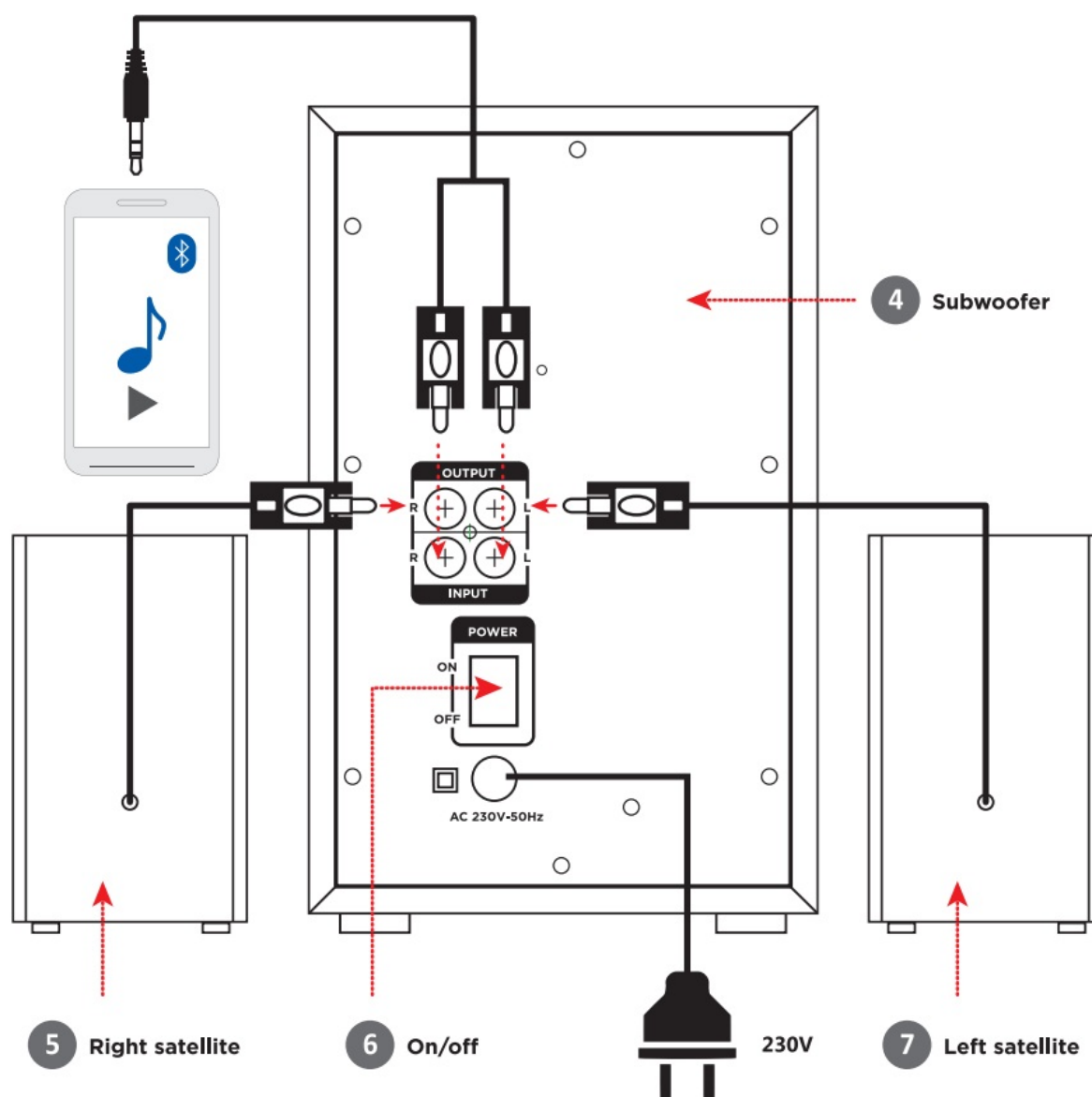
Remote control



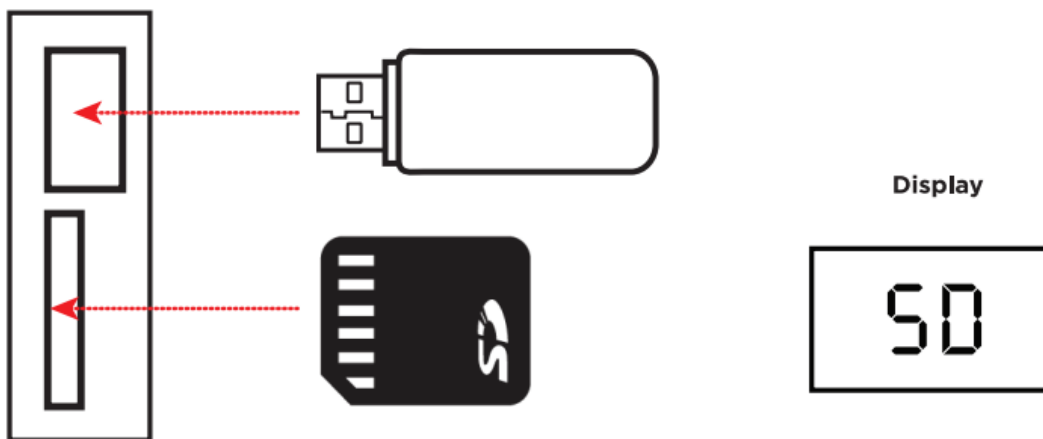
Connection



Playback via AUX



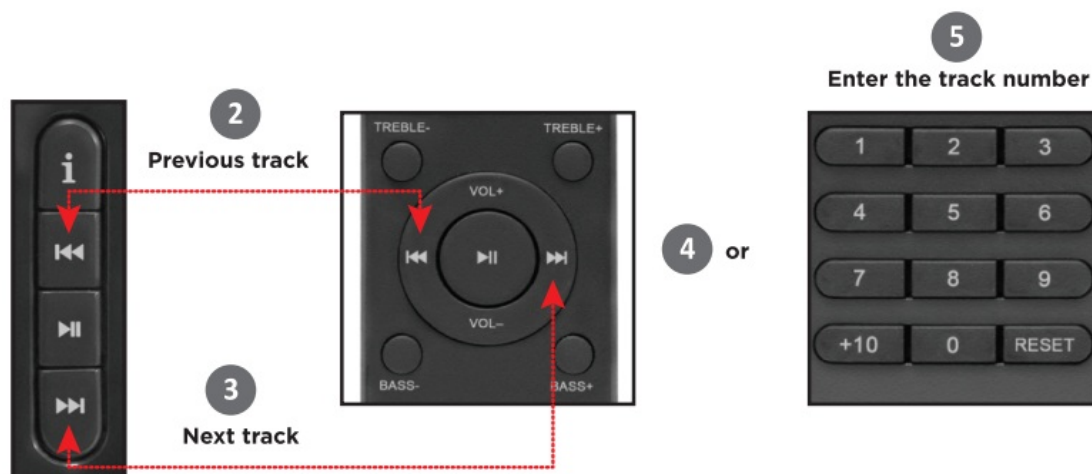
MP3 playback



Connect a USB stick or SD card with MP3 files.
The card must be in FAT32 format.

SELECT MPS TRACKS

1. Select a folder with MP3 files



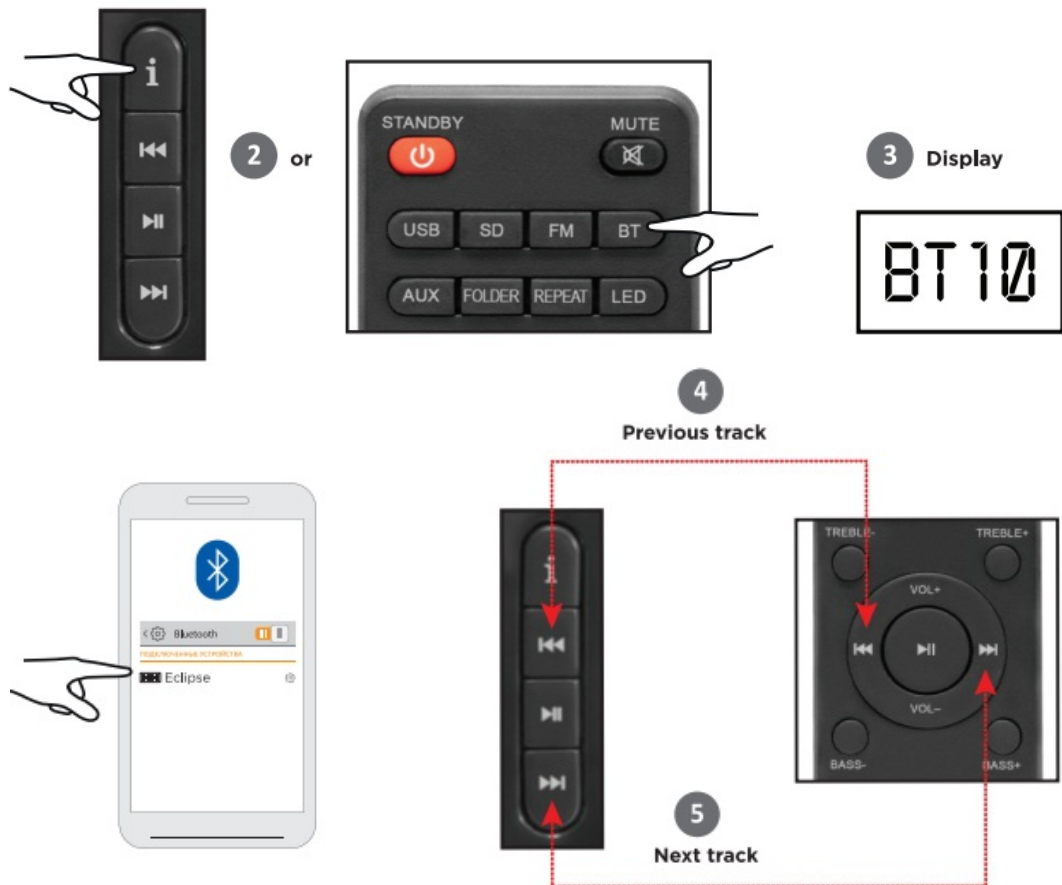
MP3 TRACKS REPEAT MODES



| | |
|-----|------------------------------------|
| ONE | 1. Repeat one track |
| FOD | 2. Repeat all tracks: in a folder, |
| ALL | 3. Repeat all tracks. |

Bluetooth playback

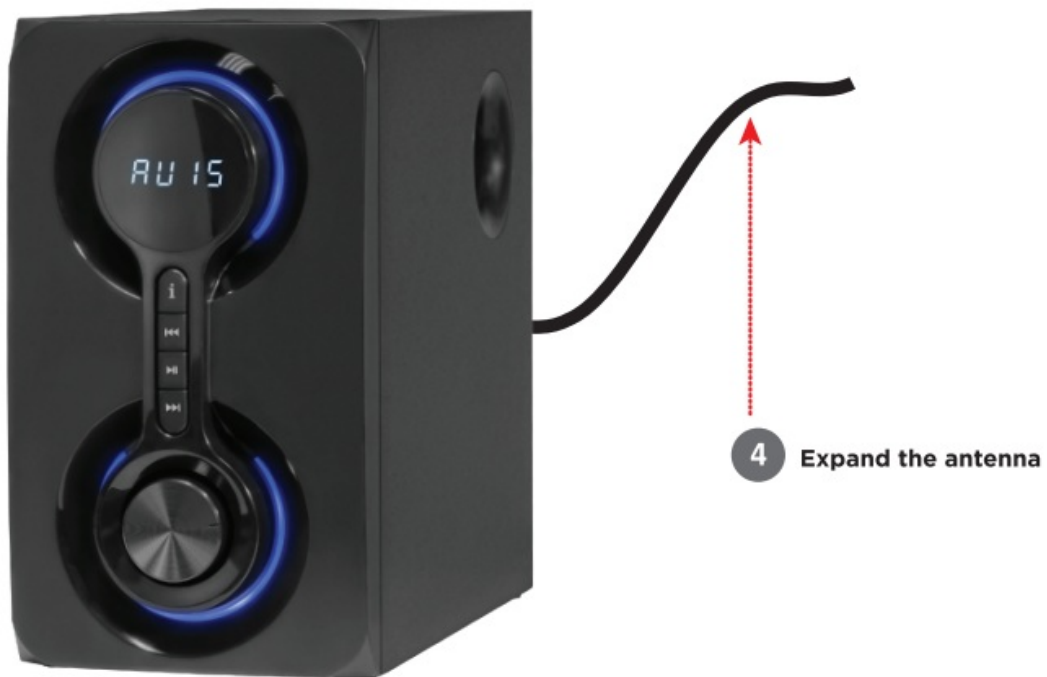
1 Select bluetooth mode



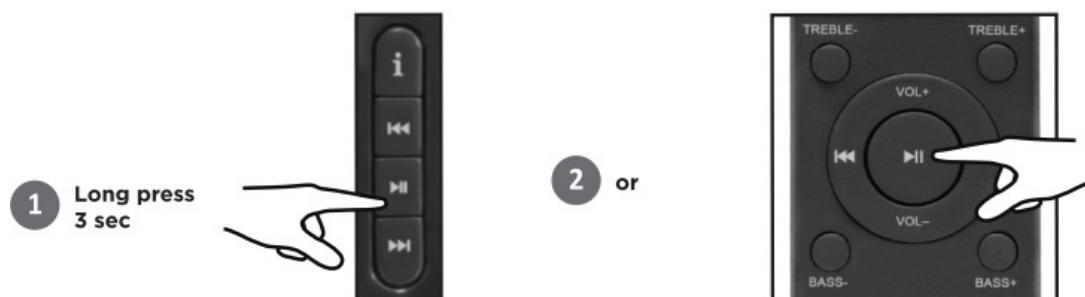
Listening FM

1. Select FM mode

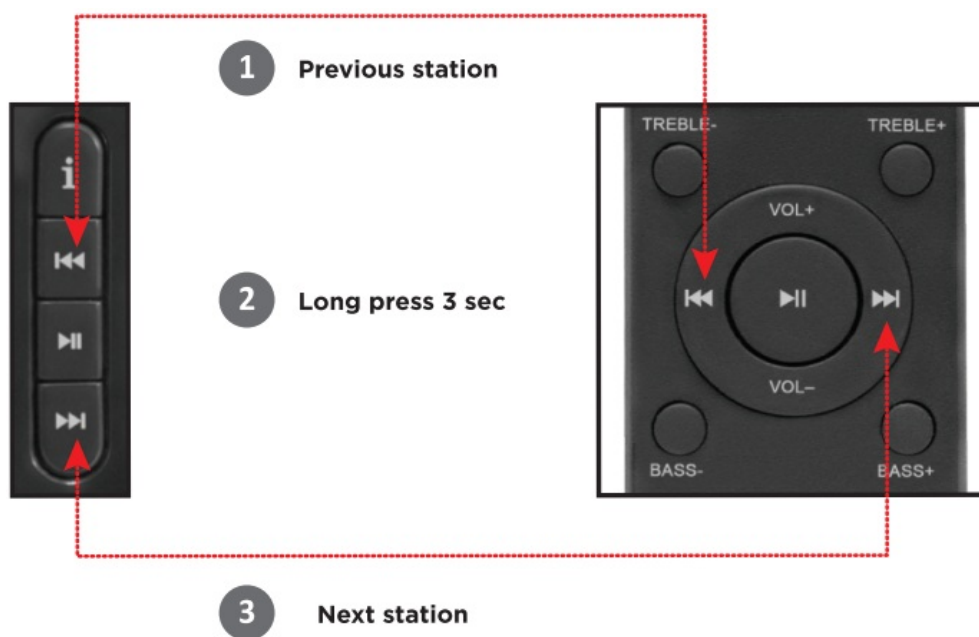




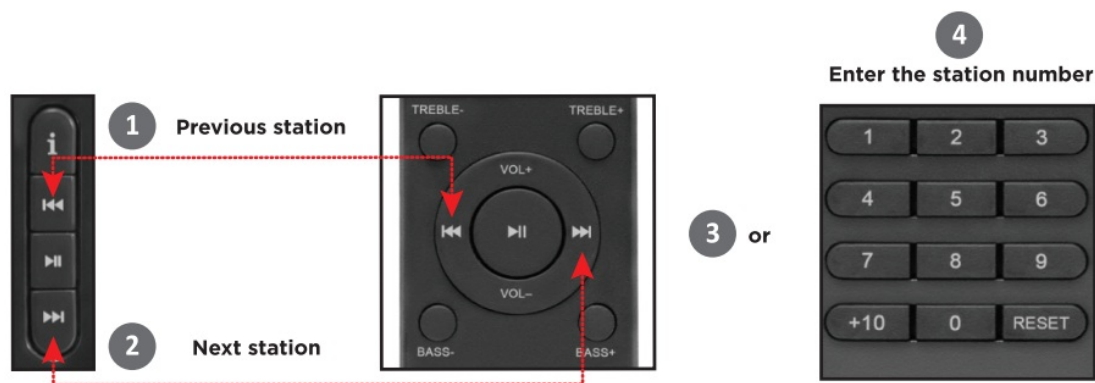
FM AUTO SEARCH



MANUAL FM SEARCH



SELECT FM STATION



Declaration of Conformity

Operation of the device (devices) may be affected by strong static, electrical or high-frequency fields (radio installations, mobile telephones, microwaves, electrostatic discharges)/ If this occurs, Try increasing the distance from the devices causing the interface.

Disposal of batteries, electrical and electronic equipment



This sign on the product, its batteries, or its package indicates that the product cannot be disposed of together with domestic waste. It should be delivered to an appropriate batteries, electrical and electronic equipment collecting and recycling company.

Terms and conditions of safe and efficient use of the product Usage precautions:

1. Use the product for its intended purpose only.
2. Do not disassemble. This product does not contain parts that are entitled to a self-sufficient repair. On the question of maintenance and replacement of a failed item apply to a dealer or Defender authorized service center. While receiving the product make sure that it is unbroken and that there are no freely moving objects inside the product.
3. Keep away from children under the age of 3. May contain small parts.
4. Keep away from humidity. Never immerse the product in liquids.
5. Keep away from vibrations and mechanical stresses, which can cause mechanical damage to the product. In case of mechanical damage, no warranties are provided.
6. Do not use it in the presence of visual damage. Do not use it when the product is obviously defective.
7. Do not use the product at temperatures below and above-recommended temperatures (see the operation manual), under the conditions of humidity evaporation, as well as in a hostile environment.
8. Do not put it into the mouth.
9. Do not use the product for industrial, medical, or manufacturing purposes.
10. In case when shipment of the product was conducted in subzero temperatures, then before operating, the product should be kept in a warm placement (+16-25°C or 60-77°F) within 3 hours.
11. Turn off the device each time, when it is not planned to use it for an extended period of time.
12. Do not use the device while driving the vehicle, if it is diverting attention, and in other cases when the law obliges you to turn off the device.

Features

- Bluetooth 5.0
- USB flash drives and SD card support
- Built-in MP3 player
- Built-in FM receiver

- The wooden enclosure of the subwoofer
- Wireless remote control
- LED information display on the subwoofer
- Subwoofer backlight

Specification

- Sound scheme: stereo, 2.1
- Total output power (RMS): 40 W
- Satellite wattage (RMS): 2×10 W
- Subwoofer wattage (RMS): 20 W
- Satellite driver size: 3 “
- Subwoofer driver size: 4 “
- Frequency range: 40-20000 Hz
- Subwoofer frequency response: 40-200 Hz
- Satellite frequency response: 200-20000 Hz
- Power supply: 230 V / 50 Hz
- Tuner frequency range: 78.0-108.5 MHz
- Interface: 2RCA audio-in
- Subwoofer enclosure material: MDF
- Satellite enclosure material: Plastic

Package contents

- Speaker system
- Wireless remote control
- 3.5 mm jack — 2RCA cable to connect to PC
- Operation manual
- Warranty service coupon

IMPORTER:

Defender Technology 00,
Betooni str 11, 11415, Tallinn,
Estonia.

Manufacturer: DIGIMAX TECHNOLOGY (DONGGUAN) CO., LTD.

Address:

Bldg B, No.37 Fumin Road,
Xiabian Community, Houjie Town, Dongguan,
China.


Unlimited shelf life. Service life is 3 years. Date of manufacture: see on the package.

The manufacturer keeps the right to change package contents and specifications indicated in this manual.

The latest and detailed operation manual is available at www.defender-global.com

Made in China.

Documents / Resources

| | |
|---|---|
|  | defender Eclipse 2.1 Speaker System [pdf] Instruction Manual Eclipse 2.1 Speaker System, Eclipse, Eclipse Speaker System, 2.1 Speaker System, Speaker System |
|---|---|

[Manuals+](#).