



# decogear DGPCS20X Mid Tower Computer Case Installation Guide

[Home](#) » [decogear](#) » decogear DGPCS20X Mid Tower Computer Case Installation Guide 

## Contents


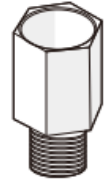
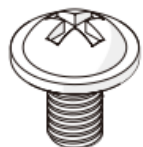


- [1 decogear DGPCS20X Mid Tower Computer Case](#)
- [2 Accessory Packet Contents](#)
- [3 Case Features](#)
- [4 INSTALLATIONS](#)
- [5 Manufacturer's 1-Year Limited Warranty](#)
- [6 Documents / Resources](#)
  - [6.1 References](#)
- [7 Related Posts](#)



**decogear DGPCS20X Mid Tower Computer Case**

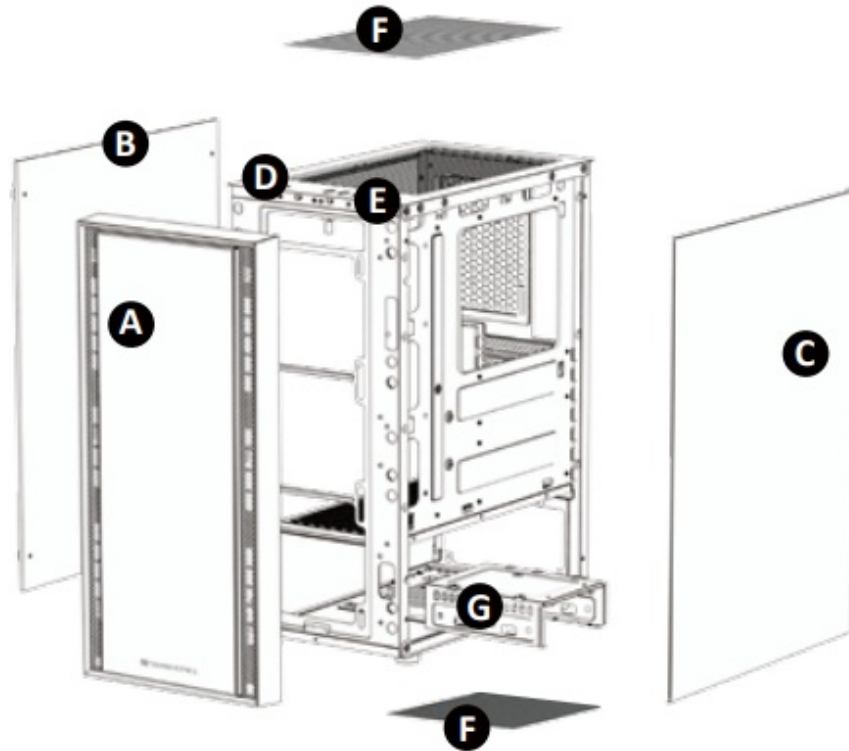


## Accessory Packet Contents

Accessory Packet Contents		
 <b>X 8</b> Add-On Card Screws	 <b>X 3</b> Motherboard Stand-Off	 <b>X 17</b> Motherboard Screws + 2.5 SSD/HDD Screws +2.5"
 <b>X 5</b> Cable Tie	 <b>X 8</b> 3.5 HDD Screws (3.5")	

## Case Features

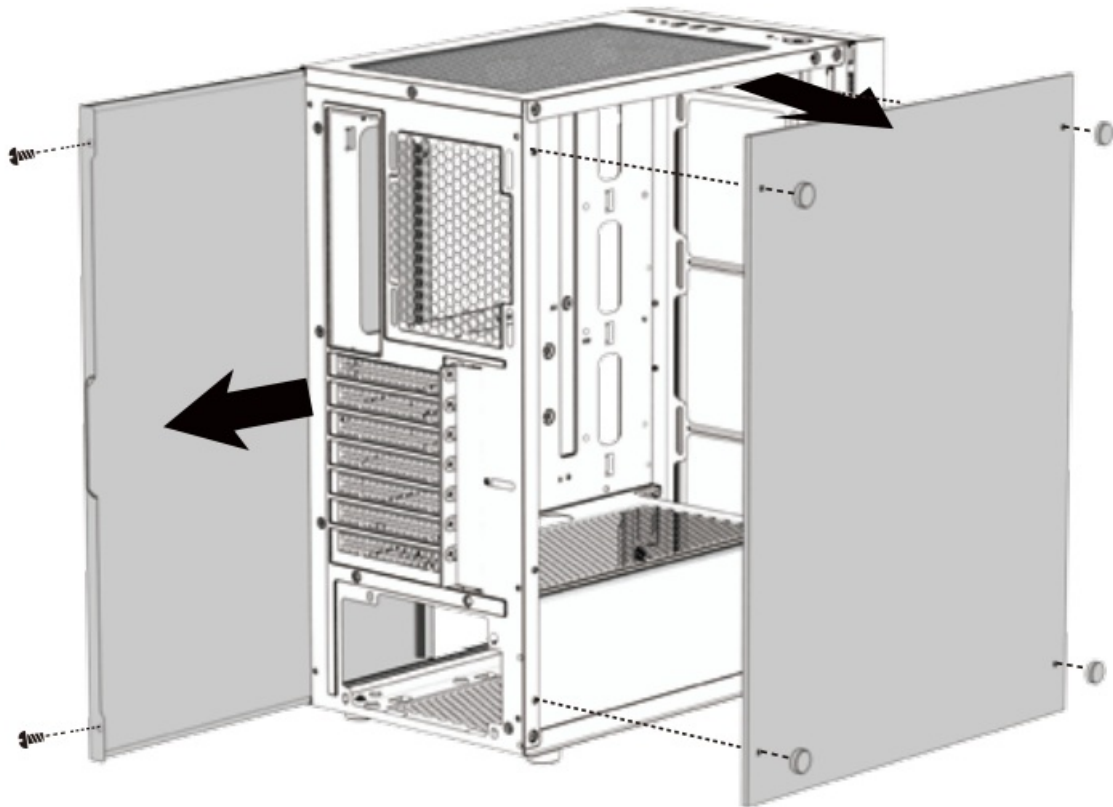
- A Front Panel
- B Left Side Tempered Glass Panel
- C Right Side Panel
- D Power + Reset Button
- E 1x USB 3.0, 2x USB 2.0, HD Audio, (1x USB 3.0, 2x USB 2.0)
- F Dust Filters
- G 3.5" HDD Drive Cage (3.5)



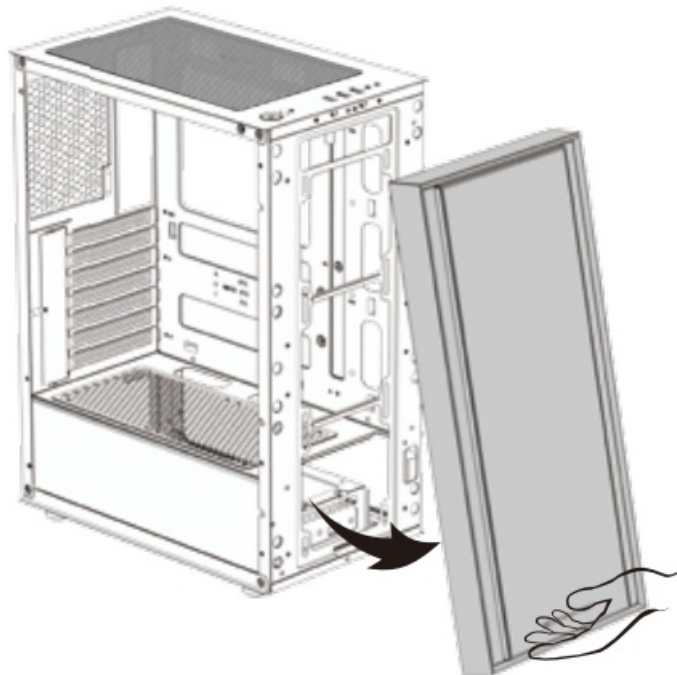
## INSTALLATIONS

### Removal of Panels

- Unscrew side-panel thumb-screws.
- Slide side panels back to release.

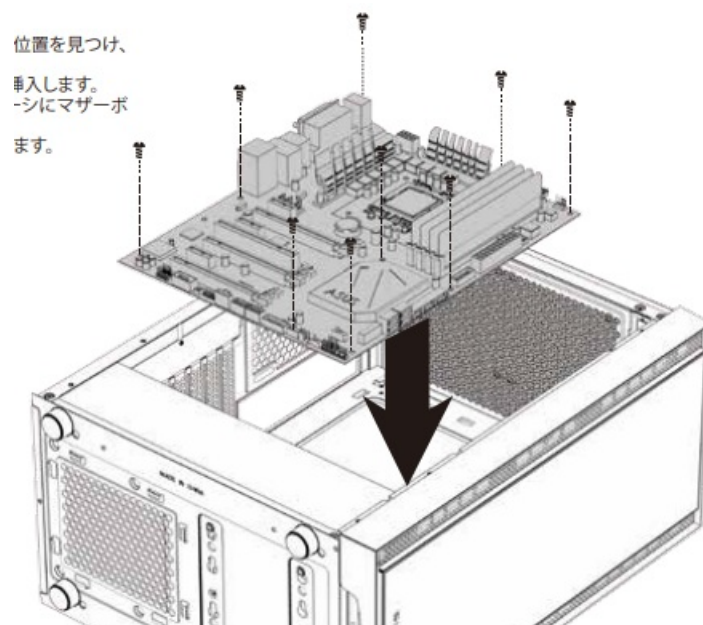


- Find the front-panel cut-out.
- Firmly stabilize the chassis with one hand.
- Apply a gradual pulling force with your other hand (using the cut-out).



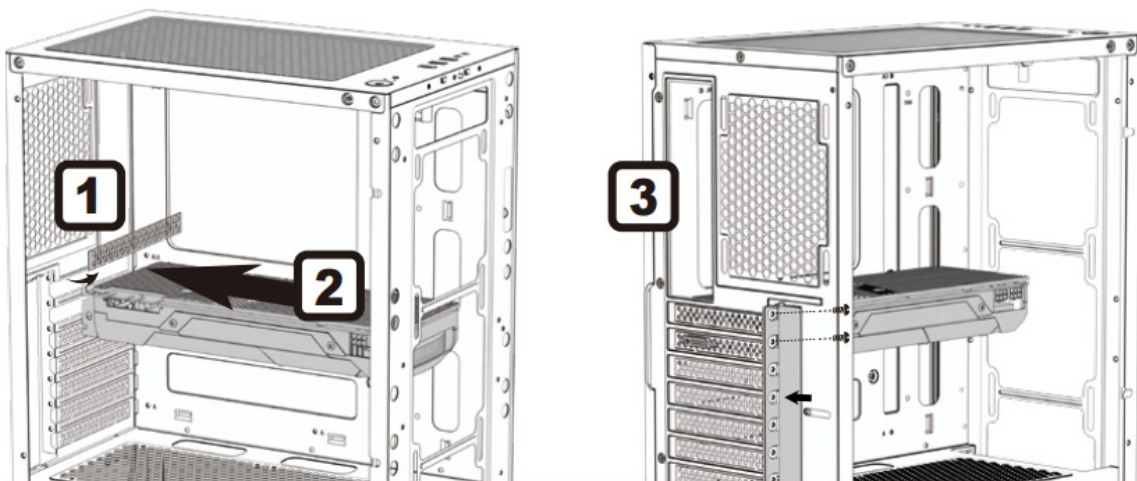
## Motherboard Installation

- Find the correct stand-off locations by aligning with your motherboard and fasten needed stand-offs accordingly.
- Insert your motherboard I/O back-plate into the cut-out.
- Place your motherboard into the chassis with the ports inserted into the I/O back-plate.
- Anchor the motherboard with the motherboard screws provided.



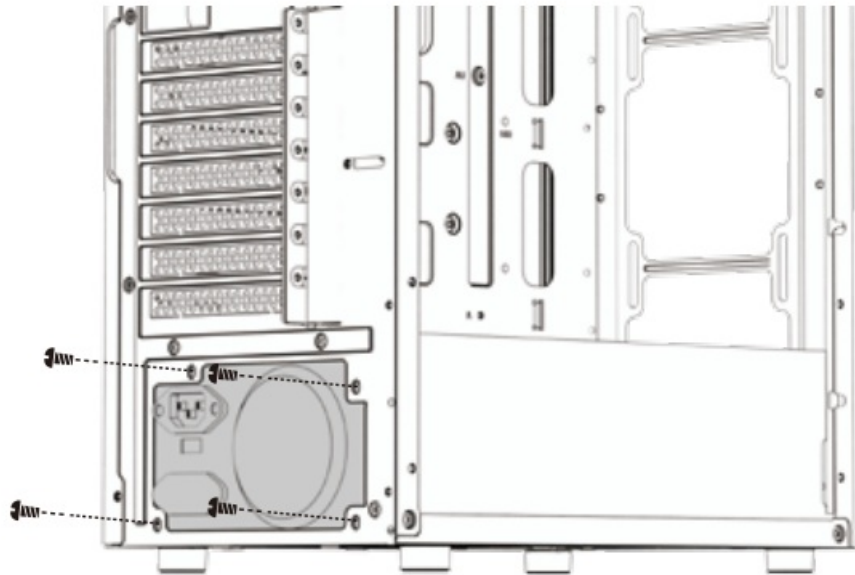
### Add-On Card Installation

- Apply pressure and bend the add-on card cover until it comes free.
- Slide the PCI/PCI-E card into position and secure it with provided 'Add-On Card Screw'.



### Power Supply Installation

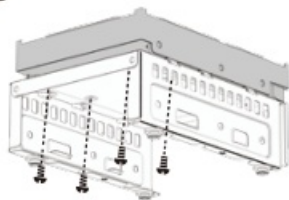
- Place PSU on the bottom of the case.
- Align holes and secure with screws.



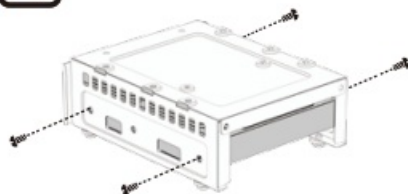
### 3.5" HDD Installation

- Remove the front fan by unscrewing the fan screws
- Slide your external 3.5" drive into the bay until it is flush with the front panel.
- Secure with screws on both sides.

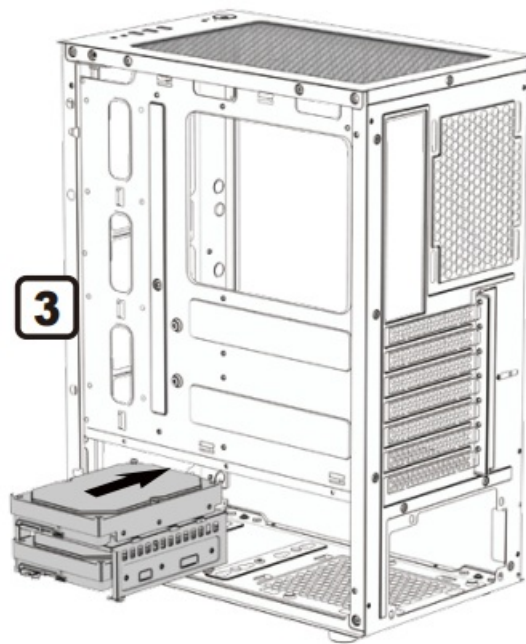
**1**



**2**



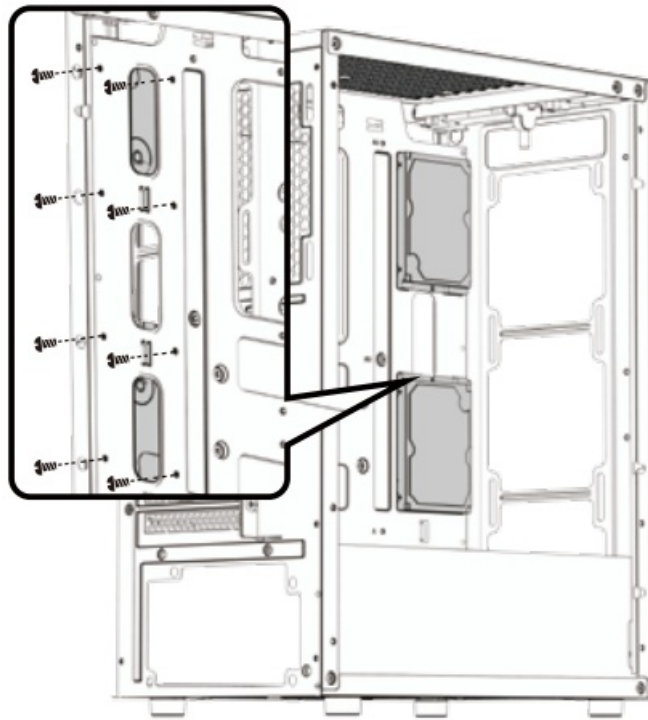
**3**



### 2.5" SSD Installation

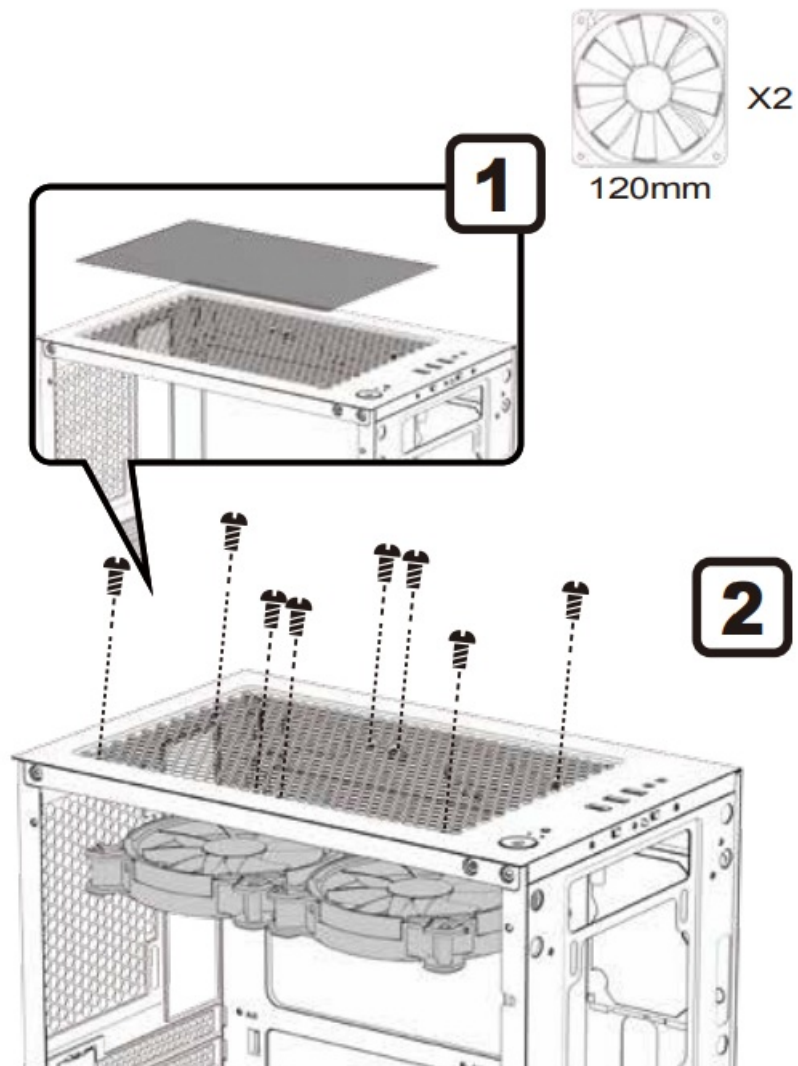
Place your 2.5" drive in and secure it with screws.





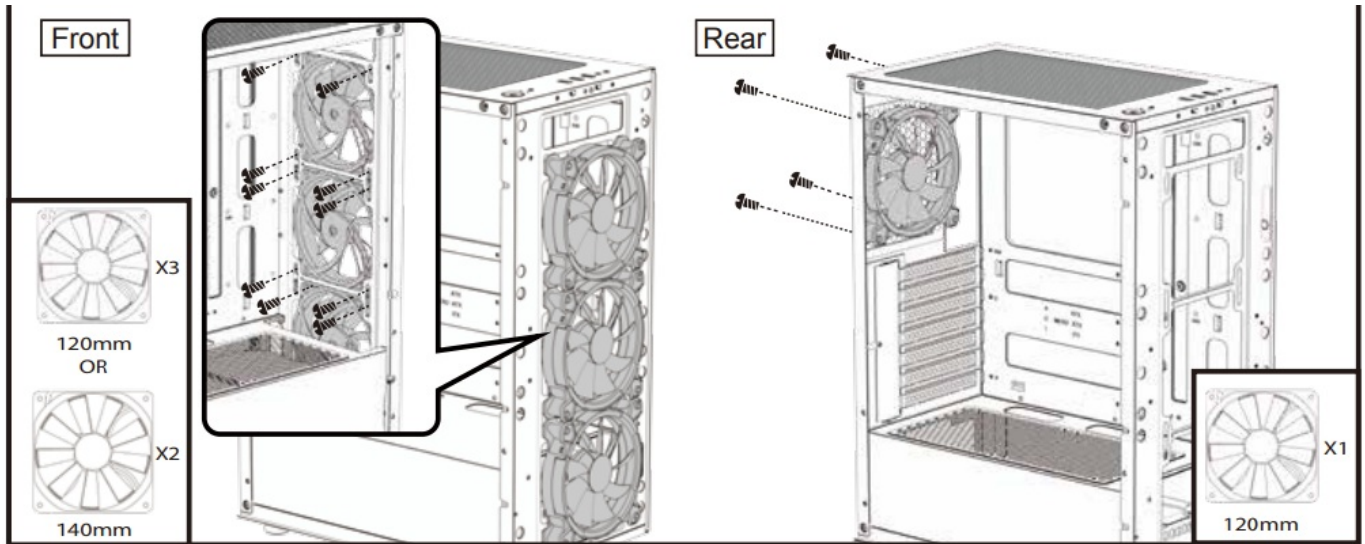
### Top Fan Installation

- Lift up the dust filter.
- Align and secure your 120mm fan with screws.



## Front/Rear Fan Installation

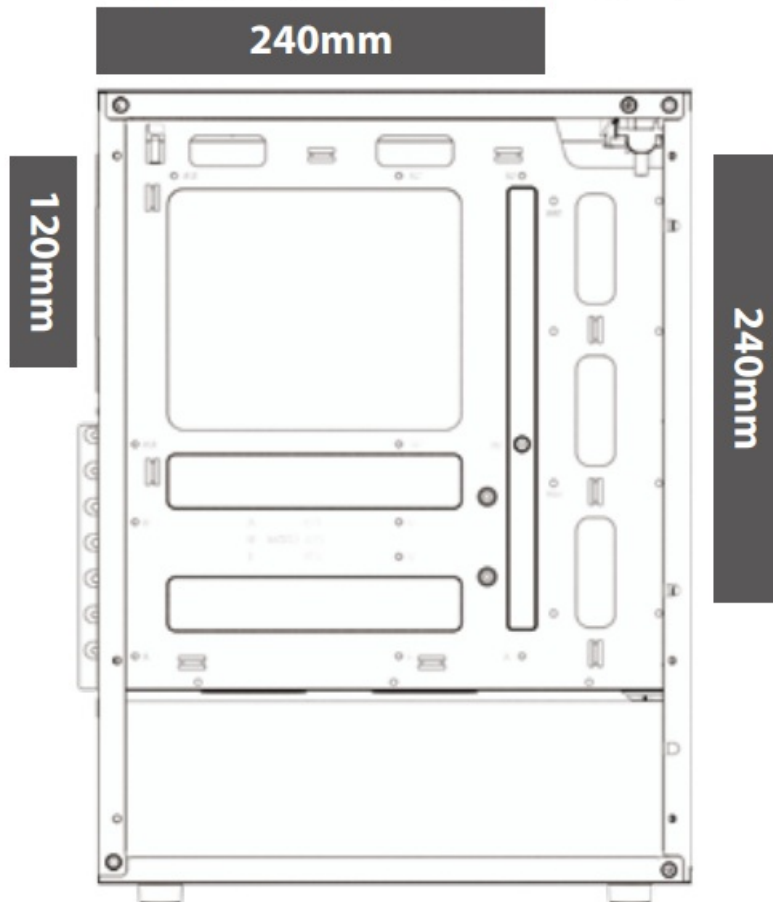
Align and secure your 120mm fan with screws.



## Liquid Cooling Installation

- Secure the fans on the radiator and fasten the radiator inside of the casing by screwing it from the outside.
- Memory Ram Height Must be Lower than 32mm
- Liquid Cooler Radiator Maximum Length limit to 270mm

- Memory Ram Height Must Lower than 32mm
- Liquid Cooler Radiator Maximum Length limit to 270mm



## Manufacturer's 1-Year Limited Warranty

The manufacturer warrants that all parts and components are defect-free in materials and workmanship for 1 year.



This warranty is valid only in accordance with the conditions set forth below:


1. The warranty extends only to the original consumer purchaser and is not transferable. In addition, proof of purchase must be demonstrated.
2. This limited warranty is the only written or expresses warranty given by the manufacturer. Any implied warranty of merchantability Or fitness for a particular purpose on this product is limited in duration to the duration of this warranty. Some states do not allow limitations on how long an implied warranty lasts, so the above limitation may not apply to you.
3. This warranty gives you specific legal rights. You may also have other rights which vary by state

#### **Procedure for Replacement or Return within the 1 Year:**

To return the product for replacement or refund within the 1 year, the original purchaser must pack the product securely and send it postage paid with a description of the reason for replacement or refund, proof of purchase, a include your order number on the package, to the following address:

- Deco Gear 80 Carter Drive Edison, NJ 08817

#### **Documents / Resources**

	<a href="#">decogear DGPCS20X Mid Tower Computer Case</a> [pdf] Installation Guide DGPCS20X, Mid Tower Computer Case, Tower Computer Case, Computer Case, DGPCS20X, Case
--	---

#### **References**

- [▶ Deco Gear Official Store | Electronics, Gaming, Kitchenware and More](#)
- [▶ Deco Gear Official Store | Electronics, Gaming, Kitchenware and More](#)