



DECKED Tool Box Ladder Instruction Manual

[Home](#) » [DECKED](#) » DECKED Tool Box Ladder Instruction Manual 

Contents

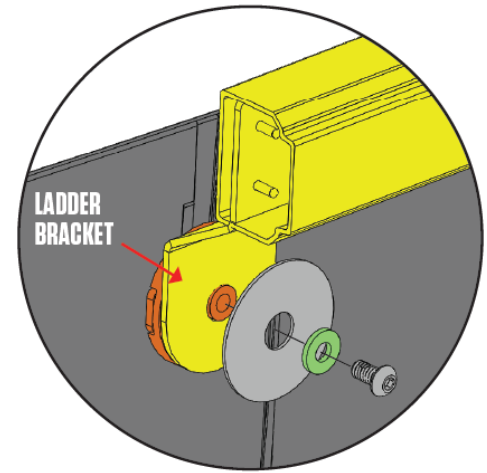
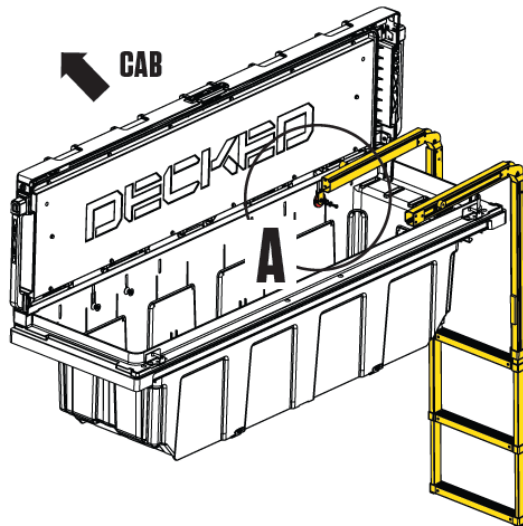
- 1 DECKED Tool Box Ladder
- 2 LADDER INSTALLATION
- 3 USING THE LADDER
- 4 LIMITED LIFETIME WARRANTY
- 5 Documents / Resources
 - 5.1 References
- 6 Related Posts



DECKED Tool Box Ladder



LADDER INSTALLATION



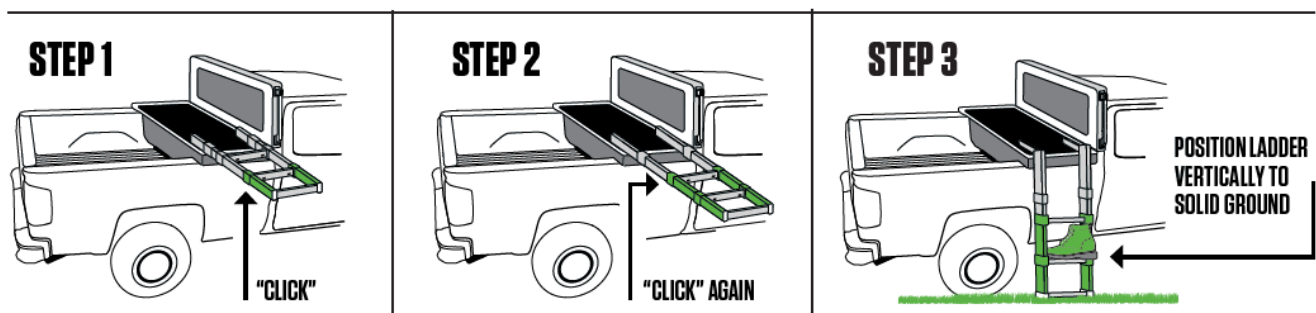
DETAIL A

- Rest the folded ladder on a table or hard surface so that you can read the instructions on the bottom of the first rung.
- While holding the top rung, pull the bottom rung from the ladder assembly until both the bottom and middle rungs lock in place.
- Set the ladder on the ground vertically next to the passenger side of your Tool Box.
- Raise both arms and extend them up and over the edge of the Tool Box to meet with the mounting discs.
NOTE: The ladder brackets must be facing down.
- Using a 5/32" hex wrench, install the hardware in the order shown, DETAIL A. Repeat on the opposite side. Tighten until snug – DO NOT OVERTIGHTEN.
- Return the ladder to the Tool Box by collapsing the rungs and folding it back into place.

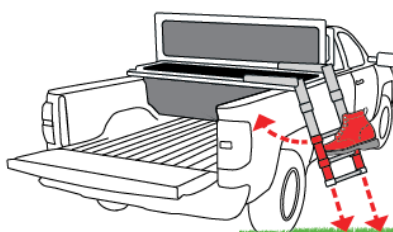
TOOLS NEEDED

- 5/32" hex wrench

USING THE LADDER



▼ WARNING DON'T DO THIS ▼



PLACE LADDER ON SOLID GROUND WITH BOTH RUNGS LOCKED INTO PLACE (LADDER STEPS 1-3). FAILURE TO DO THIS COULD ALLOW LADDER TO SWING INTO TRUCK AND CAUSE DAMAGE TO THE VEHICLE



SCAN ME

WATCH LADDER INSTRUCTIONAL VIDEOS:
[DECKED.COM/LADDER](https://www.decked.com/ladder)

LIMITED LIFETIME WARRANTY

DECKED LLC warrants to the original purchaser of this product that the product will be free from manufacturing defects in workmanship and materials for a period of three (3) years from the date of the original purchase. If within three (3) years from the original date of purchase this product fails due to defect in materials or workmanship, DECKED LLC will replace any defective part at its option. The original purchaser must contact the DECKED LLC customer service team and provide a description of the defective part, including digital pictures if requested, with the original purchase documentation as validation of warranty coverage or have previously activated their warranty online. This warranty DOES NOT cover or apply to:



- Damage to the product due to misuse, mishandling and abuse.
- Products not used in accordance with the manufacturer's instructions or recommendations.
- Product not assembled or installed according to manufacturer's instructions.
- Normal wear and tear.
- Undeclared damage to the system during shipping, acts of God. In addition, consequential damage and incidental damages (including lost time) such as damage to persons or property are not covered under this warranty More information: [DECKED.COM/WARRANTY](https://www.decked.com/warranty)

WARNING:

Failure to read and follow instructions for DECKED Tool Box installation and ladder usage may result in personal injury or cause damage to the vehicle. Please read our comprehensive DECKED Tool Box warning in detail:





[DECKED.COM/TOOLBOX-WARNING](https://www.decked.com/toolbox-warning)

[DECKED.COM](https://www.decked.com) | #DECKEDUSA | @DECKEDUSA

Documents / Resources

A diagram showing the installation of a DECKED Tool Box Ladder. It includes a small image of the ladder and a larger image of the ladder being installed into a vehicle's cargo area. The diagram is labeled 'LADDER INSTALLATION' and 'DETAIL A'.	<p>DECKED Tool Box Ladder [pdf] Instruction Manual Tool Box Ladder, Box Ladder, Ladder</p>
--	--

References

-  [DECKED Truck Bed Storage, Tool Boxes & Truck Accessories](#)
-  [Register Your DECKED Truck Bed Organizer System | DECKED Accessories](#)
-  [DECKED® Toolbox Ladder Complete Guide](#)
-  [DECKED® Lifetime Warranty](#)

Manuals+.