



DECKED RC618 Ladder for Tool Box Ladder Bracket Instruction Manual

[Home](#) » [DECKED](#) » DECKED RC618 Ladder for Tool Box Ladder Bracket Instruction Manual 

Contents

- [1 DECKED RC618 Ladder for Tool Box Ladder Bracket](#)
- [2 Product Information](#)
- [3 Product Usage Instructions](#)
- [4 ToolBox Ladder Bracket Installation](#)
- [5 LADDER INSTALLATION](#)
- [6 USING THE LADDER](#)
- [7 Documents / Resources](#)
 - [7.1 References](#)
- [8 Related Posts](#)



DECKED RC618 Ladder for Tool Box Ladder Bracket



Product Information

The CAB LADDER BRACKET is an accessory designed to securely attach a ladder to the back of a truck. This bracket is orange in color and is referred to as Detail A in the product manual.

Product Usage Instructions

1. Ensure that the CAB LADDER BRACKET is properly installed on the truck (refer to previous page of manual if needed).
2. Position the ladder vertically on solid ground, ensuring that both rungs are locked into place (Ladder Steps 1-3).
3. Click the ladder into place on the CAB LADDER BRACKET.
4. Double-check that the ladder is securely in place before use.

Warning: Do not attempt to click the ladder into place on the CAB LADDER BRACKET if it is not securely positioned on solid ground. This could cause damage to the vehicle or result in injury. For additional guidance, watch instructional videos on ladder usage at decked.com/ladder. Follow us on social media at #DECKEDUSA and @DECKEDUSA for updates and product information.

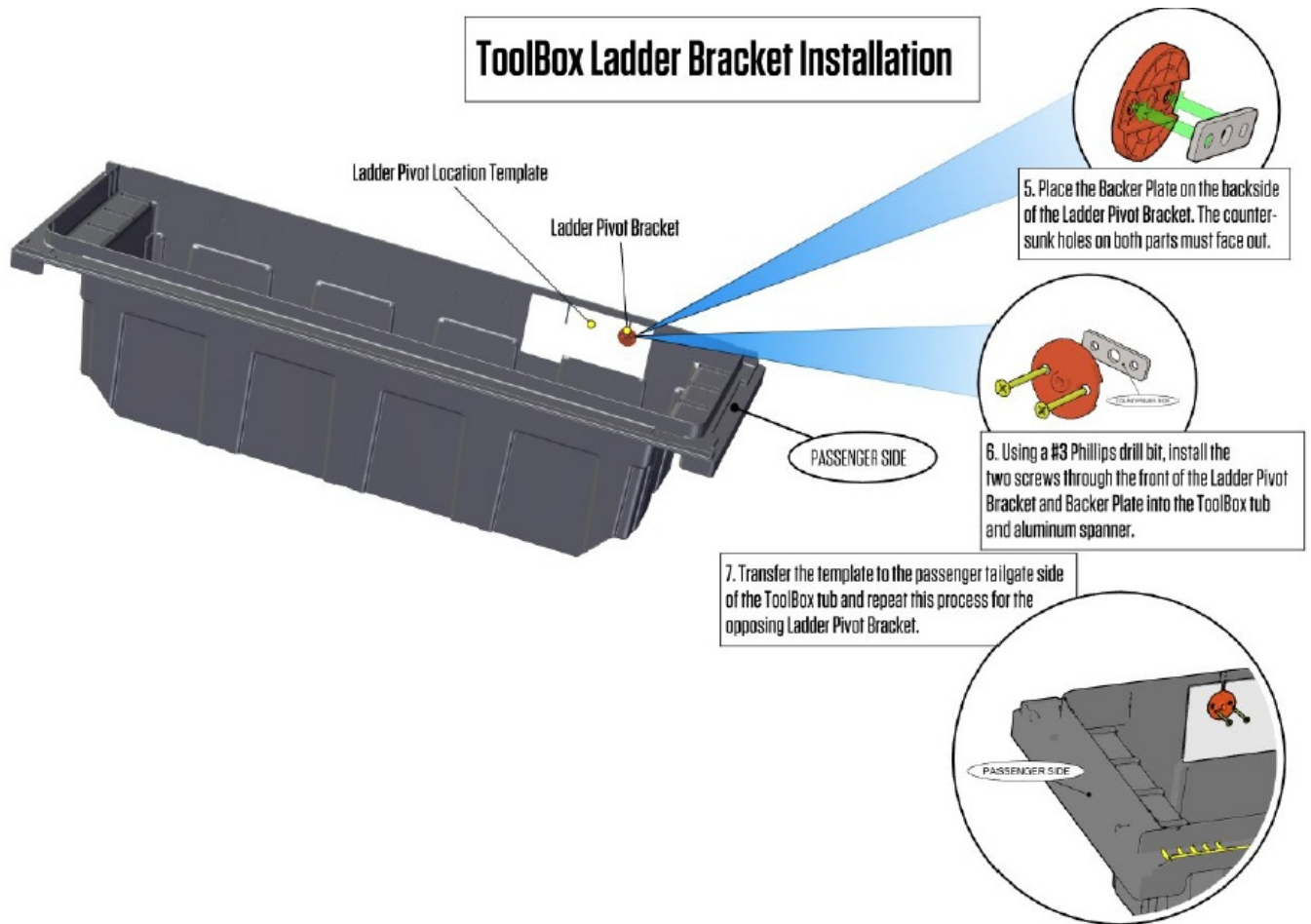
Skip to the next page if your ladder brackets are already installed.

1. Align and adhere Ladder Pivot Location Template on passenger cabside of tub as shown.
2. Place Ladder Pivot Bracket in hole on Template, ensuring holes are horizontal.
3. Using a 5/32" drill bit and the LEFT and RIGHT holes on the Pivot Bracket as a guide, drill through the tub and aluminum spanner. Do not drill through the middle hole of the bracket.

WARNING:

Failure to read and follow instructions for DECKED Tool Box installation and ladder usage may result in personal injury, or cause damage to the vehicle. Please read our comprehensive DECKED Tool Box warning in detail: [DECKED.COM/TOOLBOX-WARNING](https://decked.com/toolbox-warning)

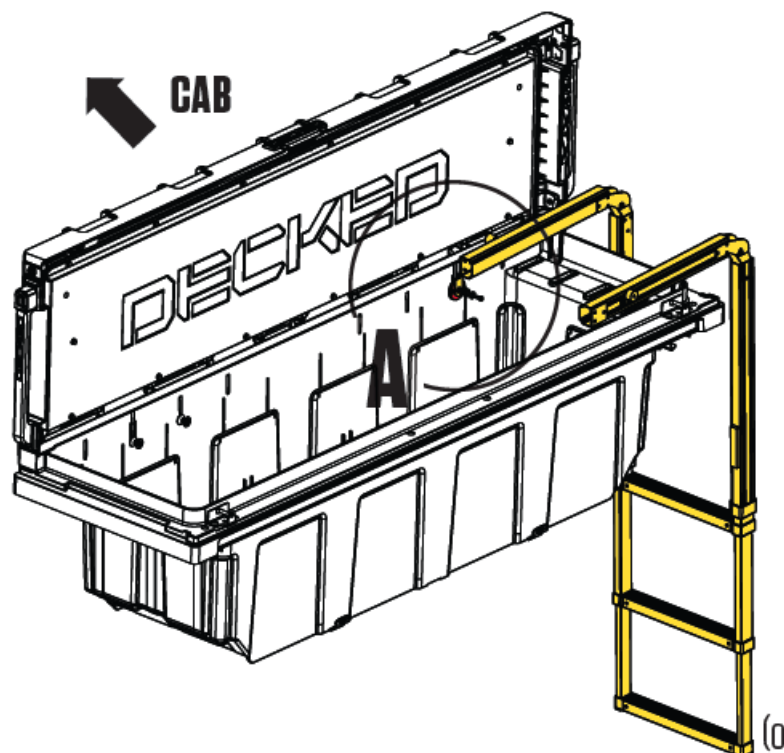
ToolBox Ladder Bracket Installation



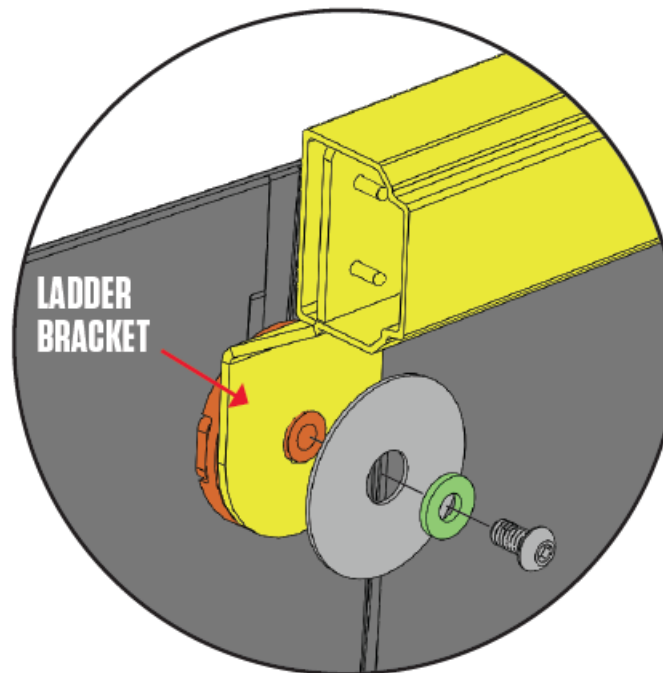
TOOLS NEEDED:

- 5/32" hex wrench

LADDER INSTALLATION



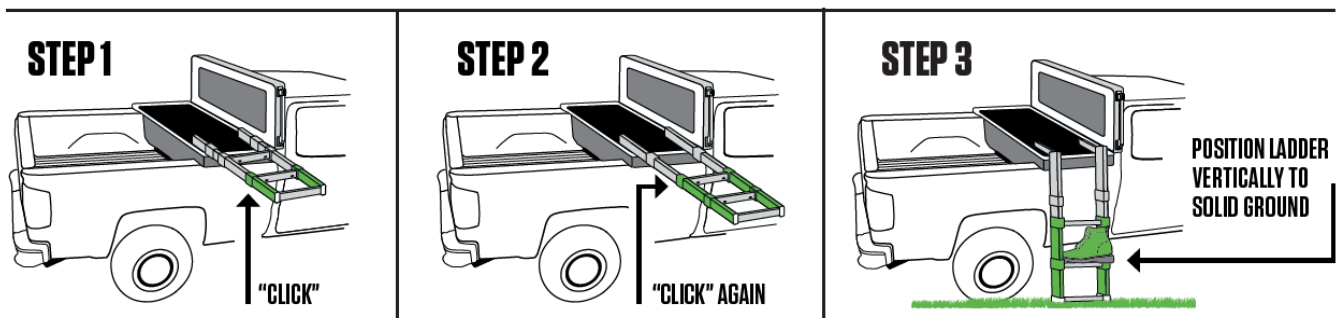
1. Check to see that the ladder pivot brackets are installed – (orange in Detail A). If not, see the previous page.



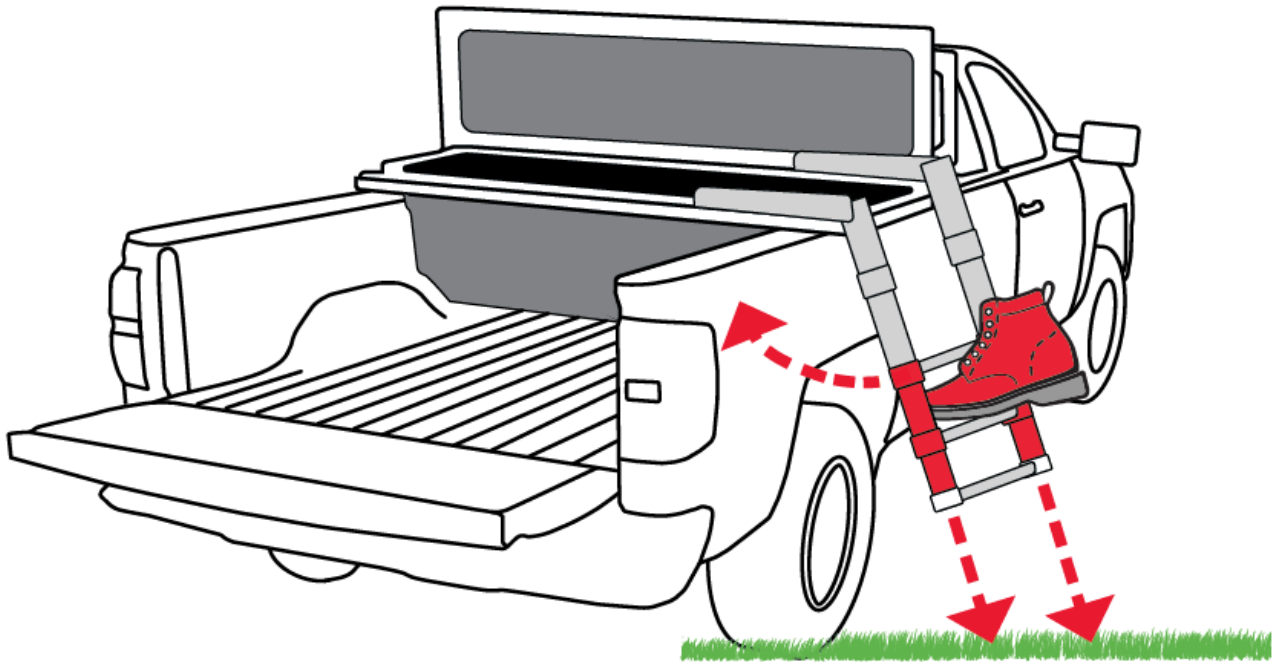
DETAIL A

2. Rest the folded ladder on a table or hard surface so that you can read the instructions on the bottom of the first rung.
3. While holding the top rung, pull the bottom rung from the ladder assembly until both the bottom and middle rungs lock in place.
4. Set the ladder on the ground vertically next to the passenger side of your Tool Box.
5. Raise both arms and extend them up and over the edge of the Tool Box to meet with the mounting discs.
NOTE: The ladder brackets must be facing down.
6. Using a 5/32" hex wrench, install the hardware in the order shown, DETAIL A. Repeat on the opposite side.
Tighten until snug – DO NOT OVERTIGHTEN.
7. Return the ladder to the Tool Box by collapsing the rungs and folding them back into place

USING THE LADDER



WARNING DON'T DO THIS



PLACE LADDER ON SOLID GROUND WITH BOTH RUNGS LOCKED INTO PLACE (LADDER STEPS 1-3). FAILURE TO DO THIS COULD ALLOW LADDER TO SWING INTO TRUCK AND CAUSE DAMAGE TO THE VEHICLE

WATCH LADDER INSTRUCTIONAL VIDEOS: [DECKED.COM/LADDER](https://www.decked.com/ladder)
[DECKED.COM](https://www.decked.com)



Documents / Resources



[DECKED RC618 Ladder for Tool Box Ladder Bracket](#) [pdf] Instruction Manual
RC618 Ladder for Tool Box Ladder Bracket, RC618, Ladder for Tool Box Ladder Bracket, Tool B
ox Ladder Bracket, Ladder Bracket, Bracket

References

-  [DECKED Truck Bed Storage, Tool Boxes & Truck Accessories](#)

