



DECKED RC540 Drawer Dividers Instructions

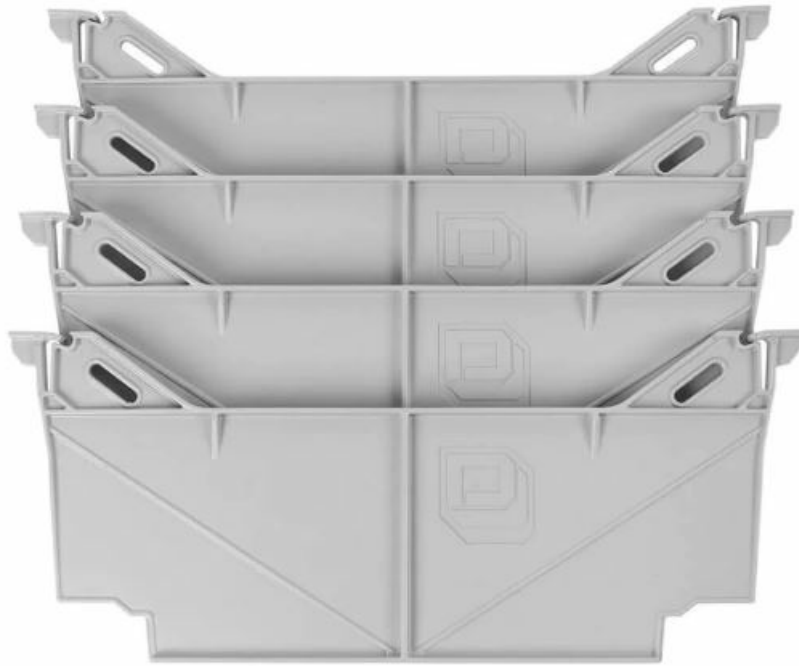
[Home](#) » [DECKED](#) » DECKED RC540 Drawer Dividers Instructions 

Contents

- [1 DECKED RC540 Drawer Dividers](#)
- [2 Product Information](#)
- [3 Product Usage Instructions](#)
- [4 INSTRUCTIONS](#)
- [5 Documents / Resources](#)
 - [5.1 References](#)
- [6 Related Posts](#)



DECKED RC540 Drawer Dividers



Product Information

The Part RC540 ADB Divider Clip1 is a set of clips designed to keep your dividers securely in place. It comes with extra clips and screws for alternate placement options.

Product Usage Instructions

1. Start by determining the desired fit for your dividers.
2. If you prefer a looser divider fit, install the clips with the tabs facing up.
3. If you prefer a tighter divider fit, install the clips with the tabs facing down.
4. Use the included screws to secure the clips in place.
5. Ensure that the dividers are aligned properly and securely held in place by the installed clips.

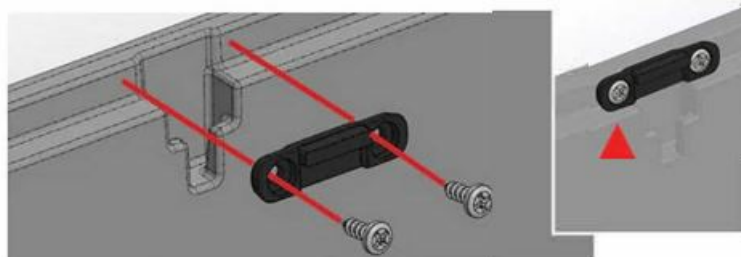
For additional assistance, you may find it helpful to watch the Divider Installation video or refer to the Decked Drawer Dividers Installation guide.

ADB DIVIDER CLIP1 INSTRUCTIONS

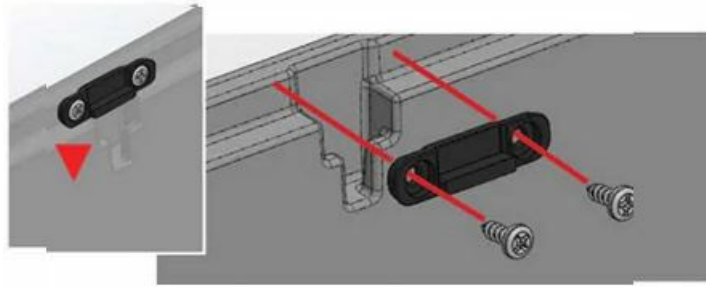
INSTRUCTIONS

These clips keep your dividers securely in place

- Install clips with tabs up for looser divider fit




- Install clips with tabs down for a tighter divider fit



We've included extra clips and screws for alternate placement options.

MIGHT BE USEFUL: Watch Divider Installation video Decked Drawer Dividers Installation

Documents / Resources

	<p>DECKED RC540 Drawer Dividers [pdf] Instructions RC540 Drawer Dividers, RC540, Drawer Dividers, Dividers</p>
---	--

References

- [User Manual](#)