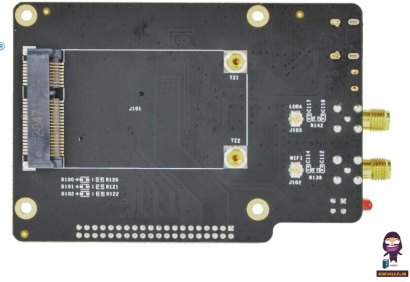



LoRa Board Mini
PCIe Interface



DEBIX LoRa Board Mini PCIe Interface Owner's Manual

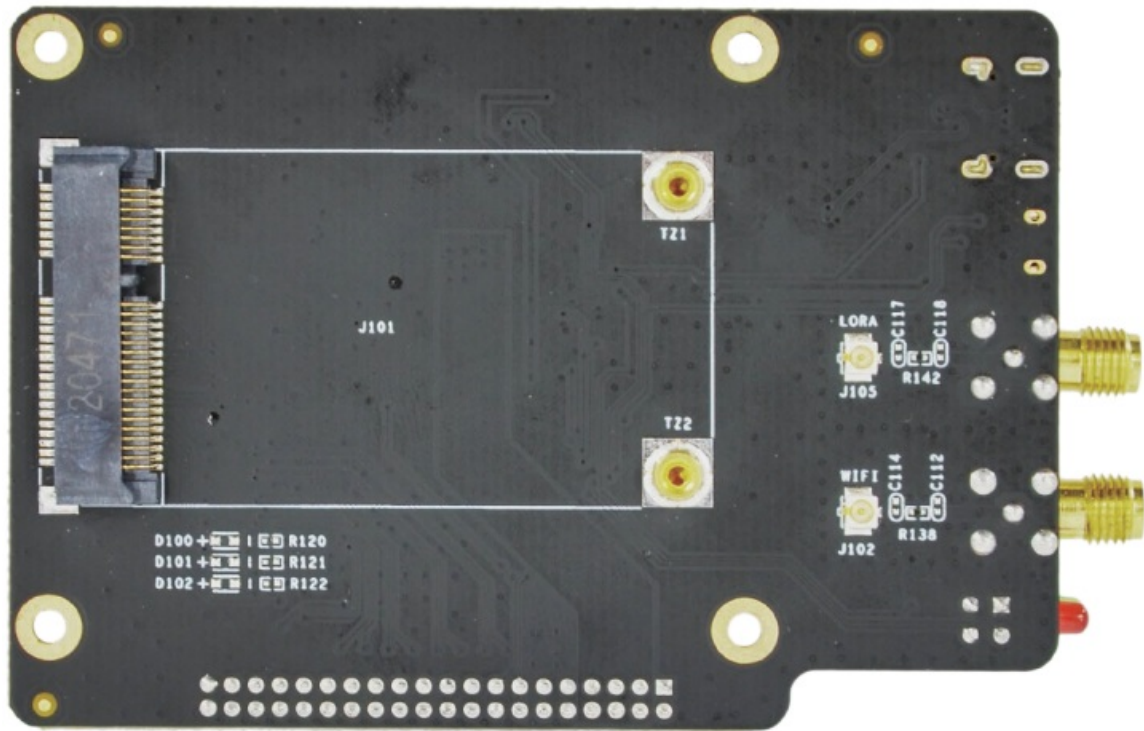
[Home](#) » [DEBIX](#) » DEBIX LoRa Board Mini PCIe Interface Owner's Manual 

Contents

- [1 DEBIX LoRa Board Mini PCIe Interface](#)
- [2 Overview](#)
- [3 Specification](#)
- [4 I/O Interfaces](#)
- [5 Safety Instruction and Warnings](#)
- [6 FAQs](#)
- [7 Documents / Resources](#)
 - [7.1 References](#)



DEBIX LoRa Board Mini PCIe Interface



- www.debix.io

I/O Interfaces

- USB 1 x USB Type-C Debug (USB to Serial)
- Mini PCIe 1 x Mini PCIe (LoRa Module)
- Buttons 1 x Bluetooth Pairing Button
- LED 1 x Operation Indicator, 1 x Pairing Indicator
- External Antenna 1 x LoRa Antenna Connector, 1 x Wifi Antenna Connector
- EEPROM 1 x 2Kbit EEPROM
- Clipper Chip 1 x Secure Element, eg. ATECC608

Power supply

- Power Input DC 5V/1A

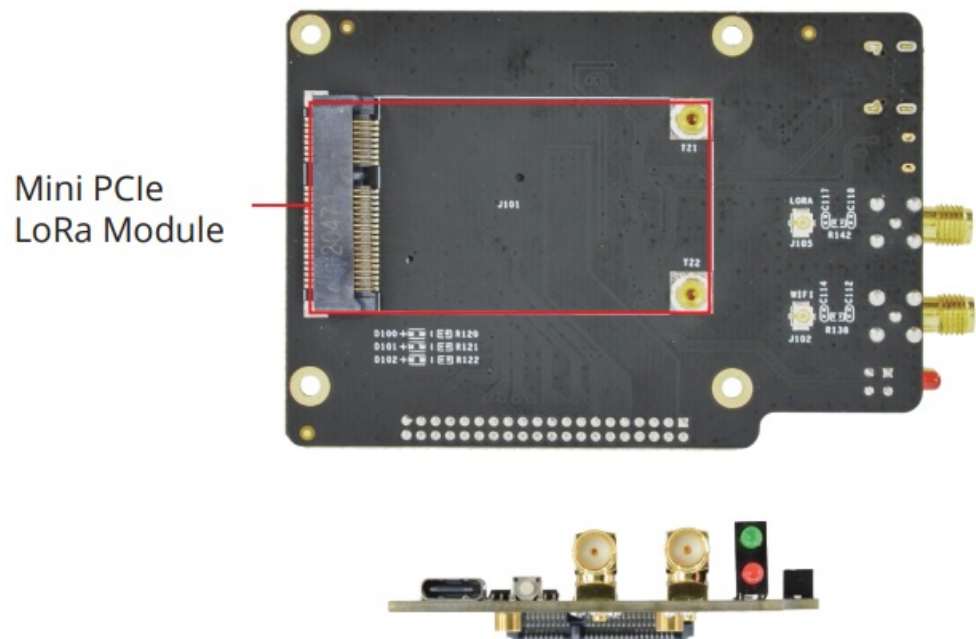
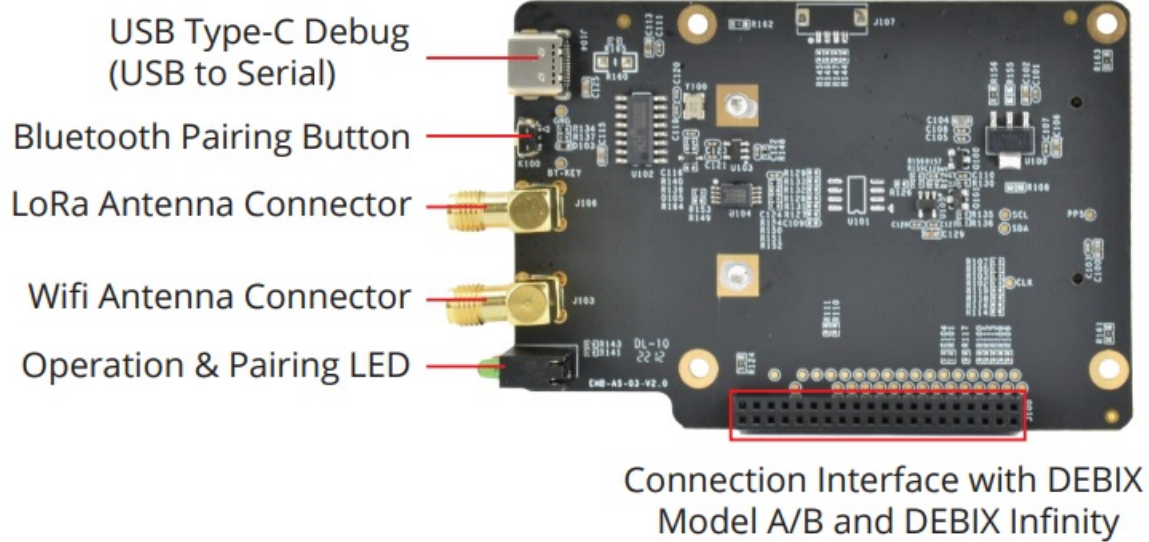
Mechanical

- Net Weight 28g(± 0.5 g)
- Gross Weight 54g(± 0.5 g)

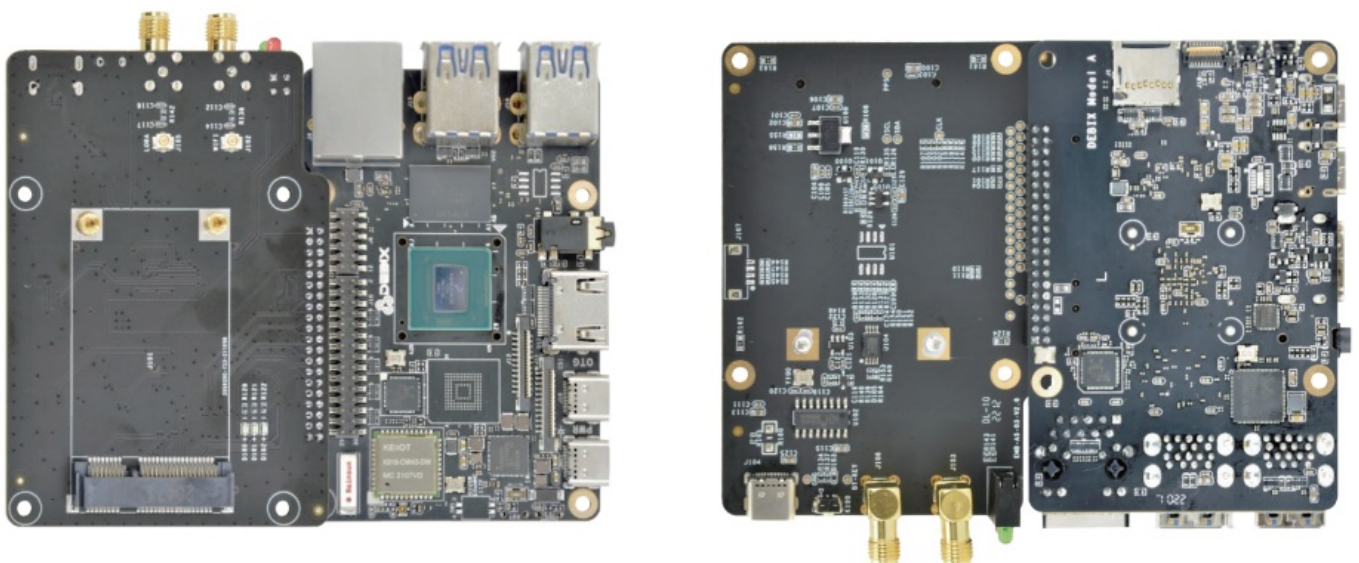
Certificates



I/O Interfaces



Connection with DEBIX Model A/B



Safety Instruction and Warnings

General:

- Avoid exposure to water, moisture, and conductive surfaces while operating.
- Handle with care to avoid mechanical or electrical damage to the circuit board and connectors.
- Only handle the board by the edges when powered on to minimize the risk of electrostatic discharge damage.

Environment

- Operate in a well-ventilated environment, even if using a case.
- Place on a stable, flat, non-conductive surface and avoid contact with conductive items.

Connections

- Use peripherals that comply with relevant standards for the country of use and ensure proper insulation and operation.

Additional notes

- This summary is not exhaustive, please refer to the full User Manual for details.
- If you are unsure about any aspect of safety or operation, consult a qualified professional.

Contact Us:



- Headquarters: DEBIX Technology Inc., 8345 Gold River Ct., Las Vegas, NV 89113, USA
- Factory: 5-6/F., East Zone, Shunheda A2 Building, Liuxiandong Industrial Park, Xili, Nanshan Dist., Shenzhen, China
- Email: info@debix.io
- Website: www.debix.io
- Community: <https://discord.com/invite/adaHHaDkH2>

FAQs

Q: What is the purpose of the Secure Element on the board?

A: The Secure Element (eg. ATECC608) on the board provides hardware-based security features for data protection and authentication.

Q: Can the DEBIX LoRa Board be powered by a battery source?

A: The recommended power supply for the board is DC 5V/1A. It is not designed to be powered directly by a battery source.

Documents / Resources

	<p>DEBIX LoRa Board Mini PCIe Interface [pdf] Owner's Manual LoRa Board Mini PCIe Interface, LoRa Board, Mini PCIe Interface, PCIe Interface, Interface</p>
---	---

References

- [DEBIX Embedded Computer Solutions](#)
- [Official DEBIX Community](#)
- [User Manual](#)

[Manuals+](#), [Privacy Policy](#)

This website is an independent publication and is neither affiliated with nor endorsed by any of the trademark owners. The "Bluetooth®" word mark and logos are registered trademarks owned by Bluetooth SIG, Inc. The "Wi-Fi®" word mark and logos are registered trademarks owned by the Wi-Fi Alliance. Any use of these marks on this website does not imply any affiliation with or endorsement.