

DAYBETTER T015 WiFi Socket



DAYBETTER T015 WiFi Socket User Manual

[Home](#) » [DAYBETTER](#) » DAYBETTER T015 WiFi Socket User Manual 

Contents

- [1 DAYBETTER T015 WiFi Socket](#)
- [2 Product Information](#)
- [3 Product Usage Instructions](#)
- [4 Specification](#)
- [5 Using Device](#)
- [6 Link Alexa or Google Home](#)
- [7 Trouble Shooting](#)
- [8 FCC Caution](#)
- [9 ISED Statement](#)
- [10 Documents / Resources](#)
 - [10.1 References](#)

DAYBETTER

DAYBETTER T015 WiFi Socket



Product Information

Specifications

- **Model:** T015
- **Product:** WiFi Socket
- **Version:** v1.2
- **Functionality:** Remote control of home appliances via network-connected mobile phone or device button

Product Usage Instructions

Using Device

- **Power Button:** Press the button to switch the device ON or OFF.
- **To factory reset:** Press and hold the button for 5 seconds until the LED flashes.

App Control

- Remote on/off: Switch on or off the device remotely.
- Timer: Switch on or off the device automatically by timers.
- Countdown: Switch on or off the device after a period of time.
- Cyclic task: Switch on and off the device repeatedly.

Voice Control

Bind the smart plug to Alexa or Google Home for voice control.

Install App

Search and download 'DayBetter' app from App Store or Google Play. Alternatively, scan the QR code provided.

Warnings

- Ensure device is used within rated power to maintain safety.

- Avoid pressing the button quickly and frequently.
- Do not open the device; only qualified personnel can repair it.
- Keep the plug out of children's reach.
- Contact support for replacement if damaged during transportation.

FAQ

- If the app cannot find the device:
 - Ensure phone Bluetooth is on.
 - Allow required permissions for the app.
 - Kill the app, turn off Bluetooth, turn it back on, and try adding the device again.
 - Ensure phone is within 4ft of the product during connection.
 - If issues persist, try using another phone as compatibility may vary.

Introduction

By the smart socket, you can remotely switch on or off home appliances simple with a network-connected mobile phone. Or just press button on device to switch them on or off.

Specification

- **Rated voltage:** AC 100-120V 60Hz
- **Rated current:** 15A (resistive load)
- **Rated load:** 1800W (resistive load)
- **IP level:** IP20
- **Working temperature:** -10C° to 40C°
- **App support:** iOS and Android

Using Device

• Power Button

Press the button to switch the device ON or OFF. To factory reset the smart plug, press and hold the button for 5 seconds until the LED flashes.

• App Control

- **Remote on/off:** switch on or off the device remotely.
- **Timer:** switch on or off the device by timers automatically.
- **Countdown:** switch on or off the device after a period time.
- **Cyclic task:** switch on and off the device repeatedly.

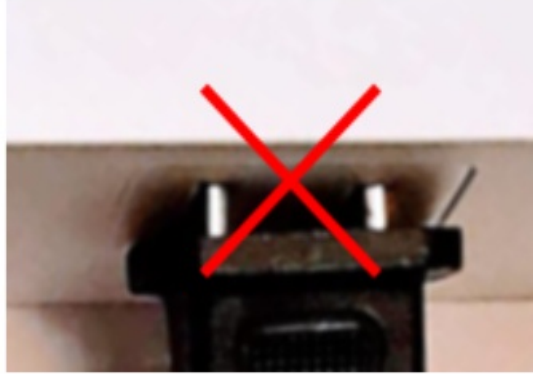
• Voice Control

Bind the smart plug to Alexa or Google home. Then you can switch on and off the device by voice.

Warnings

- Ensure the device is used within rated power to keep safe. Total power shouldn't be more than limit.
- Do not press the button quickly and frequently.
- Do not open the device. Only qualified person can repair.

- Keep the plug out of reach from children for safety concern.
- Contact support team for replacement before using if any damage due to transportation.
- Switch off socket, then plug in, then switch on. Thus no spark.
- Do not cover the device when using.
- This device is for indoor use only.
- Keep the device in dry location.
- Ensure fully plugged in before using, otherwise maybe fire hazard.



Install App

<p>Method 1 : Search and download 'DayBetter' APP on APP store or Google Play.</p> <p>NOTE: APP name is 'DayBetter'.</p>	<p>Method 2 : Scan or click the QR code below and switch to APP store or Google Play to download.</p>
	

Please allow permissions required by APP. We guarantee information security.

Log In

You can either log in by Email verification code or by password.

1. New user please create new account first.
2. You can set password on App setting page, then you can use password to log in.

Create an account

Password login

Verification code login

Turn on phone WiFi and bluetooth

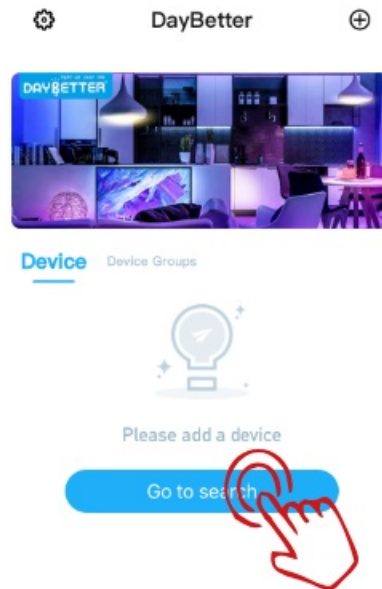


Turn on bluetooth and Wi-Fi on your smart phone and connect phone to 2.4GHz Wi-Fi. (After config device online, you can switch phone to other Wi-Fi)

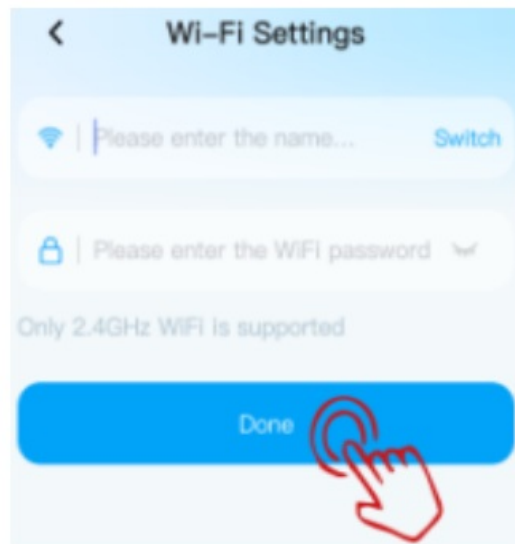
Note: 5GHz Wi-Fi is not supported.

Search and Add device

- Click “Go to search” to search nearby devices.



- Go on to connect device to WiFi.



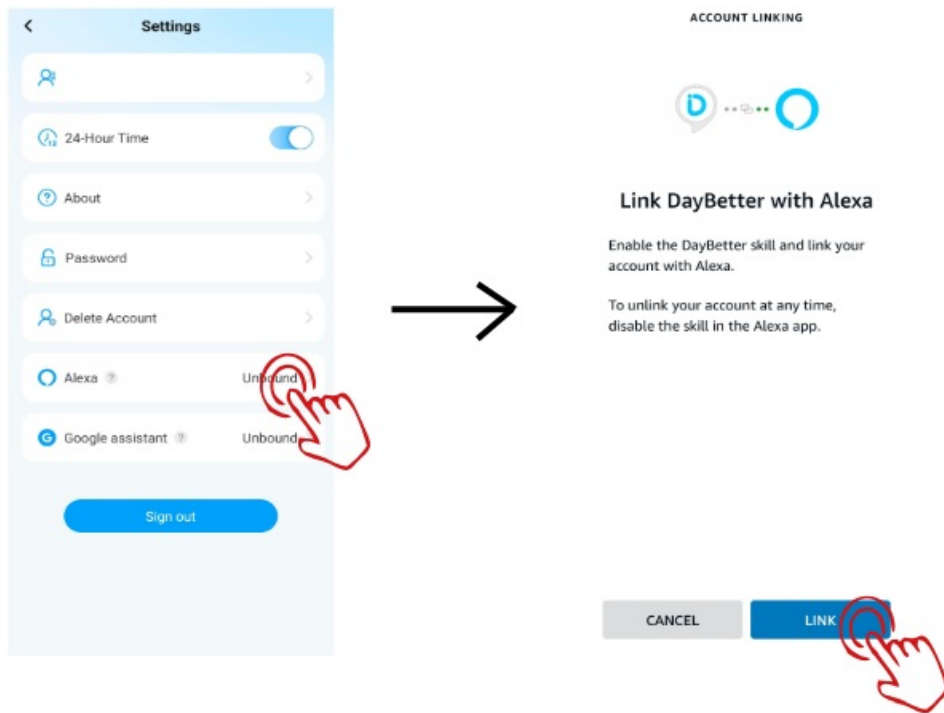
NOTE:

1. Please move device close to WiFi router to help connect.
2. Try again if fail which may happen rarely.
3. If still failed, please reset device and try again.

Link Alexa or Google Home

Method 1: Bind Alexa on DayBetter APP(Recommended)

1. Go to APP setting page and click Alexa tab to call LINK page.
2. Then just click LINK on the link page.
3. Wait a second. Success. You can find online device shown up on Alexa APP.



Note: Ensure the device is WiFi-connected and Alexa APP already logged in, before you link to Alexa.

Method 2: Bind DayBetter on Alexa APP(NOT recommended)

- Search and enable 'DayBetter' skill on Alexa APP.

Please scan the QR code for more help.



- Please scan the QR code for how to link Google Home.



Trouble Shooting

- **a) APP can not find the device.**
 - Make sure the phone bluetooth is on.
 - Allow the permissions of APP. APP needs them to connect.
 - Kill APP, turn off bluetooth and turn on bluetooth again, then start APP to add device again.
 - Ensure phone within 4ft from product when connecting.
 - Your phone may be incompatible with the APP, try another phone.
- **b) Failed to connect to Wi-Fi.**
 - Check Wi-Fi supports 2.4GHz. Not 5GHz.
 - Reset device by hold button for 5 seconds until LED flashes.
 - Bring device close to Wi-Fi router to improve signal.
 - Add device and connect it to Wi-Fi again.
- **c) Device not shown on Alexa APP.**
 - Remove device from DayBetter APP and add the device again.
 - Unlink Alexa, and Link Alexa again.

Contact us

If you have any questions or product issues, please contact seller via the email on the package or get product support on the order page in your purchasing account. All messages will be replied within 24 hours.

FCC Caution

This device complies with part 15 of the FCC Rules. Operation is subject to the following two conditions: (1) This device may not cause harmful interference, and (2) this device must accept any interference received, including interference that may cause undesired operation.

Any Changes or modifications not expressly approved by the party responsible for compliance could void the user's authority to operate the equipment.

Note: This equipment has been tested and found to comply with the limits for a Class B digital device, pursuant to part 15 of the FCC Rules. These limits are designed to provide reasonable protection against harmful interference in a residential installation. This equipment generates uses and can radiate radio frequency energy and, if not installed and used in accordance with the instructions, may cause harmful interference to radio communications. However, there is no guarantee that interference will not occur in a particular installation. If this equipment does cause harmful interference to radio or television reception, which can be determined by turning the equipment off and on, the user is encouraged to try to correct the interference by one or more of the following measures:

- Reorient or relocate the receiving antenna.
- Increase the separation between the equipment and receiver.
- Connect the equipment into an outlet on a circuit different from that to which the receiver is connected.
- Consult the dealer or an experienced radio/TV technician for help.

This equipment complies with FCC radiation exposure limits set forth for an uncontrolled environment. This equipment should be installed and operated with minimum distance 20cm between the radiator & your body.

ISED Statement


This device contains licence-exempt transmitter(s)/receiver(s) that comply with Innovation, Science and Economic Development Canada's licence-exempt RSS(s). Operation is subject to the following two conditions:

1. This device may not cause interference.
2. This device must accept any interference, including interference that may cause undesired operation of the device.

The digital apparatus complies with Canadian CAN ICES-3 (B)/NMB-3(B).

This device meets the exemption from the routine evaluation limits in section 2.5 of RSS 102 and compliance with RSS 102 RF exposure, users can obtain Canadian information on RF exposure and compliance. This equipment complies with Canada radiation exposure limits set forth for an uncontrolled environment. This equipment should be installed and operated with minimum distance 20cm between the radiator & your body.

Documents / Resources

	DAYBETTER T015 WiFi Socket [pdf] User Manual T015, T015 WiFi Socket, WiFi Socket, Socket
---	---

References

- [User Manual](#)

Manuals+, Privacy Policy

This website is an independent publication and is neither affiliated with nor endorsed by any of the trademark owners. The "Bluetooth®" word mark and logos are registered trademarks owned by Bluetooth SIG, Inc. The "Wi-Fi®" word mark and logos are registered trademarks owned by the Wi-Fi Alliance. Any use of these marks on this website does not imply any affiliation with or endorsement.