

DAYBETTER A19 E26 Smart LED Bulb User Manual

Contents

1 User Manual

1.1 Smart Led Bulb

1.1.1 Product Specification

1.1.2 Download and Install the APP

1.1.3 Add Device

1.1.4 Control Your Device

1.1.5 Create a Group

1.1.6 FCC Compliance Statement

1.1.7 FCC Radiation Exposure Statement

2 Documents / Resources

2.1 References

3 Related Posts

User Manual

Smart Led Bulb



Customer Service: Servicevvip1@outlook.com

Product Specification

Power: 9W

Voltage: AC110V-130V

Lumen: 800LM

Lifespan: >15000H

Frequency: 50-60Hz

Colour Temperature: 2700K-6500K+ RGB

Control Method: APP

Download and Install the APP

Scan the QR code below or search “Tuya” or “Smart Life” APP in the Apple or Google Play store.

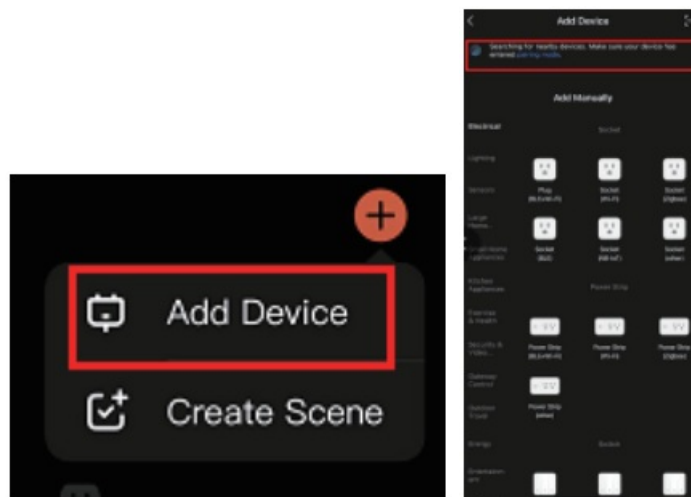


Log in

1. Select your country, then log in with your email + verification code, enter the email address and tap “Get” to receive the verification code. Enter the verification code, then tap “Login”.
2. Sign in via social media account.

Add Device

- (1) Turn on the phone's Bluetooth.
- (2) Turn on the power of the device, and the light bulb will flash after 3-5 seconds. If there is no flashing automatically, please perform the “on-off-on-off-on” action. (Reset bulb)
- (3) Make sure the bulb is blinking.
- (4) Open the “Smart Life” or “Tuya” APP, a window should automatically appear, first “find the device”, then— click “add”—click on the device—click next—add successfully.



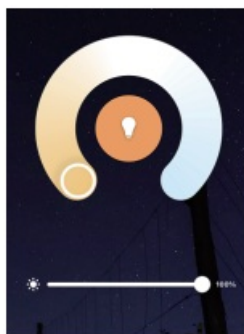
If the pop-up window does not appear, please manually click the “+” in the upper right corner of the homepage, then click on “add a device”—then select “Light Source Bluetooth”.



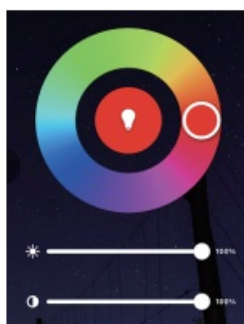
Control Your Device

After the device is successfully connected, find the new device at the bottom to enter the smart light control panel. There are 6 modes to choose from:

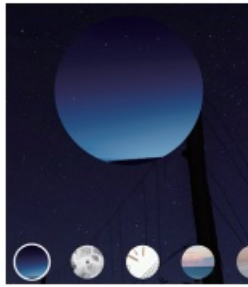
1. White light mode: Dim the brightness and color temperature of white light. (2700K-6500K)



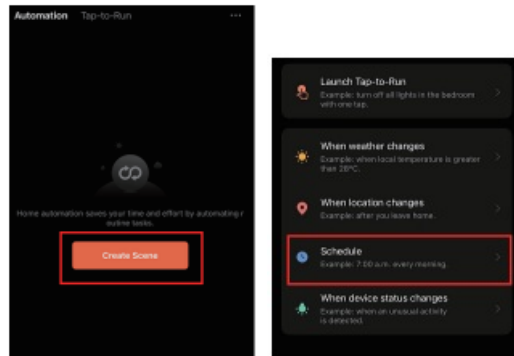
2. Color mode: Change the color and brightness of the bulb.



3. Scene mode: Six scene modes



4. Music synchronization mode: Select “Music Rhythm” and the bulb will automatically sync with the rhythm of the music.
5. Time set mode: Set the time based on your needs to control when the bulb turns on/off.



6. Group control mode: Multiple bulbs can be grouped together to be simultaneously controlled by the same switch. Control the color, scene mode, and music.

Create a Group

- (1) Click the light bulb device
- (2) Click the pen icon in the upper right corner
- (3) Click “create a group”
- (4) Click “+” to add a device
- (5) Name the group name and click “Save”
- (6) Now that the group has been created, you can control multiple bulbs at the same time (excluding the time set mode)

Note

1. The bulb must be within 30 meters of the device for a reliable Bluetooth connection.
2. The time set function cannot be performed in group mode. Only with a single bulb.
3. For resetting the smart bulb, please perform the “on-off-on-off-on” action. When the bulb begins blinking quickly, it indicates that the reset is successful. If the bulb does not blink, repeat the process.
4. Our products come with a limited warranty of 12 months from the date of purchase. And we have a professional customer service to attend to your questions and comments concerning our products.

FCC Compliance Statement

This device complies with part 15 of the FCC Rules. Operation is subject to the following two conditions:

(1) This device may not cause harmful interference; (2) This device must accept any interference received, including interference that may cause undesired operation.

Warning: Changes or modifications not expressly approved by the party responsible for compliance could void the

user’s authority to operate the equipment.

NOTE: This equipment has been tested and found to comply with the limits for a Class B digital device, pursuant to Part 15 of the FCC Rules. These limits are designed to provide reasonable protection against harmful interference in a residential installation.


This equipment generates, uses and can radiate radio frequency energy and, if not installed and used in accordance with the instructions, may cause harmful interference to radio communications. However, there is no guarantee that interference will not occur in a particular installation. If this equipment does cause harmful interference to radio or television reception, which can be determined by turning the equipment off and on, the user is encouraged to try to correct the interference by one or more of the following measures:

- Reorient or relocate the receiving antenna.
- Increase the separation between the equipment and receiver.
- Connect the equipment into an outlet on a circuit different from that to which the receiver is connected.
- Consult the dealer or an experienced radio; TV technician for help.

FCC Radiation Exposure Statement

This equipment complies with FCC radiation exposure limits set forth for an uncontrolled environment. This equipment should be installed and operated with minimum distance 20cm between the radiator&your body.

Documents / Resources

	<p>DAYBETTER A19 E26 Smart LED Bulb [pdf] User Manual A19 E26, A19 E26 Smart LED Bulb, Smart LED Bulb, LED Bulb, Bulb</p>
-------------------------------------------------------------------------------------	-----------------------------------------------------------------------------------------------------------------------------------------------

References

- [User Manual](#)