



DAVEY SP200BTP Variable Speed Pool Pump Instruction Manual

[Home](#) » [DAVEY](#) » DAVEY SP200BTP Variable Speed Pool Pump Instruction Manual 

Contents

- [1 DAVEY SP200BTP Variable Speed Pool Pump](#)
- [2 Technical Specifications](#)
- [3 Installation of the SilensorPro Premium VSD200 Pump](#)
- [4 Features & Functionality](#)
- [5 Bluetooth app set up](#)
- [6 Setting a schedule](#)
- [7 Settings](#)
- [8 Operating your Suction Pool Cleaner](#)
- [9 Trouble Shooting](#)
- [10 Davey Warranty](#)
- [11 Documents / Resources](#)
 - [11.1 References](#)
- [12 Related Posts](#)

DAVEY

DAVEY SP200BTP Variable Speed Pool Pump



WARNING: Failure to follow these instructions and comply with all applicable codes may cause serious bodily injury and/or property damage.

This pump requires professional expertise for installation and maintenance. The installation of this product therefore should be carried out by a person knowledgeable in swimming pool plumbing requirements and who follows the installation instructions provided in this manual.

- Please pass these instructions on to the operator of this equipment.

Congratulations on the purchase of a quality product from the Davey Water Products range of Pool Equipment. You are assured many years of reliable and super-efficient performance from your Davey SilensorPro VSD Pool pump with Bluetooth. This pump is Bluetooth enabled, so you will be able to set and control the pump functions from your smart device. Bluetooth is a wireless communication protocol that enables communication between devices. This function is supported by any device that can download an app from IOS or Android App Store. Read these instructions in their entirety before switching on this pump. If you are uncertain as to any of these installation and operating instructions please contact your Davey dealer or the appropriate Davey office as listed on the back of this document. The Davey SilensorPro has been designed to circulate swimming pool and spa water in conditions set out in the Australian Standard for swimming pool water quality AS 3633 or equivalent. They should not be used for any other purpose without first consulting your Davey Dealer or the Davey Customer Service Centre. Every Davey SilensorPro is thoroughly water-tested against several flow, pressure, voltage, current and mechanical performance parameters. Davey's advanced pump manufacturing technology provides reliable and efficient pumping performance that lasts and lasts.

Saving Energy with your Davey SilensorPro VSD Pool Pump

The Davey SilensorPro pool pump is an Energy Star super-efficient pump utilizing a state-of-the-art infinitely variable AC motor that provides lower levels of noise, reduced operating costs, and lower greenhouse emissions than traditional pool pumps. Due to its ability to run at lower speeds than conventional pumps, your SilensorPro pump will also experience less mechanical wear and tear due to less stress on the internal mechanical components. To achieve energy-efficient pumping is easy. Simply run the filtration pump at a lower speed, but run it for longer (see table on page 7) than a conventional fixed-speed pump to "turn over" your pool water for adequate filtration and sanitization. The result is lower energy use and lower operational costs.

SilensorPro VSD Pool Pumps with Bluetooth have adjustable speed settings from 1400 – 3200rpm, so you can circulate your pool or spa water at any speed in between if required. Speeds can be adjusted to power a Suction pool cleaner, In-Floor cleaning system & Pool Heaters. A Backwash setting on the pump can be selected to backwash a media filter.

What to expect with a variable speed pump on your pool

If your SilensorPro pump is replacing a traditional AC motor pump, you will need to run it longer than your old fixed-speed pump. This is NORMAL and you will save energy when using lower speed settings. You may also notice that the pressure gauge on your filter is indicating a much lower pressure than you are used to. This is also NORMAL. The lower system pressure is simply a result of the lower speed and flow rate produced by the pump. While running at the lower speed settings you will also notice a significant reduction in pump noise. This is a major benefit for you as it allows you to run your pump during off-peak electricity tariffs, which will also assist in the reduction of your operating costs

Important considerations when running the pump on Low Flow settings:

Many pool products rely on particular minimum flow rates for best operation and/or efficiency. If you are using low flow settings on the SilensorPro pump (e.g. speed 1 to 4) Davey recommends that you check the compatibility of the speed or minimum flow rate required to run specific pool equipment such as:

- Suction pool cleaners
- Ozone generators
- Pool Heaters
- Solar Heating systems
- Salt Water Chlorinator cells
- In-floor pool cleaning systems

Power Connection – HARDWIRED CONNECTION ONLY

When installing and using this electrical equipment, basic safety precautions should always be followed, including the following:

- Ensure the motor is connected to the power supply specified on the nameplate.
- Avoid long extension leads as they can cause substantial voltage drop and operating problems.
- Although the Davey electric motor is specifically engineered to perform on a range of power supply voltages, malfunctions or failure caused by adverse voltage supply conditions are not covered under guarantee.
- Power connections and wiring must be carried out by an Authorised Electrician.

1. READ AND FOLLOW ALL INSTRUCTIONS

- 2. WARNING** – To reduce the risk of injury, do not permit children to use this product unless they are closely supervised at all times.
- 3. WARNING** – Risk of Electric Shock. Connect only to a branch circuit protected by a ground-fault circuit interrupter (GFCI). Contact a qualified electrician if you cannot verify that the circuit is protected by a GFCI.
- 4.** The unit must be connected only to a supply circuit that is protected by a ground-fault circuit interrupter (GFCI). Such a GFCI should be provided by the installer and should be tested on a routine basis. To test the GFCI, push the test button. The GFCI should interrupt power. Push the reset button. Power should be restored. If the GFCI fails to operate in this manner, the GFCI is defective. If the GFCI interrupts power to the pump without the test button being pushed, a ground current is flowing, indicating the possibility of an electric shock. Do not use this pump. Disconnect the pump and have the problem corrected by a qualified service representative before using it.
- 5. WARNING** – To reduce the risk of electric shock, replace the damaged cord immediately.
- 6. CAUTION** – This pump is for use with permanently installed pools and may also be used with hot tubs and spas if so marked. Do not use with storable pools. A permanently installed pool is constructed in or on the

ground or in a building such that it cannot be readily disassembled for storage. A storable pool is constructed so that it is capable of being readily disassembled for storage and reassembled to its original integrity.

7. SAVE THESE INSTRUCTIONS.

This SilensorPro pool pump incorporates motor overload detection designed to protect the motor from overheating. If the motor gets too hot during operation, its operating speed will reduce to bring it within an acceptable operating temperature and then will speed up to the originally set speed. To reset the motor, switch the power off for 30 seconds, and then return the power from the mains switch.

Guidelines for Recommended Pump Operating Hours

Australian Standards AS3633: "Private swimming pools – water quality" states that "The minimum turnover rate shall be a single turnover of the full volume of the pool water, within the period that the pump would normally be operating. The tables below provide a guide only to the running times of your pump while in filtration mode to achieve the minimum turnover rate:

SP200BTP

Pool Size (Gallons)	Speed Setting (hours)		
	Speed 1	Speed 5	Speed 10
5,000	3.3	2.2	1.7
8,000	5.3	3.5	2.8
11,000	7.3	4.8	3.8
13,000	8.7	5.6	4.5
16,000	10.7	6.9	5.6
21,000	14.0	9.1	7.3
27,000	18.0	11.7	9.4

Using your SilensorPro Premium VSD pump with a Davey Salt Water Chlorinator

Davey ChloroMatic, EcoSalt & EcoMineral salt water chlorinators require a minimum flow rate of 80 litres per minute (lpm) through the chlorinator cell for best efficiency and cell life. Please refer to the performance graph below as a reference for the flow in your pool and refer to the pressure indicated by the gauge on the media or cartridge filter. Ensure flow rate is sufficient to cover your chlorinator cell plates completely at all times of operation.

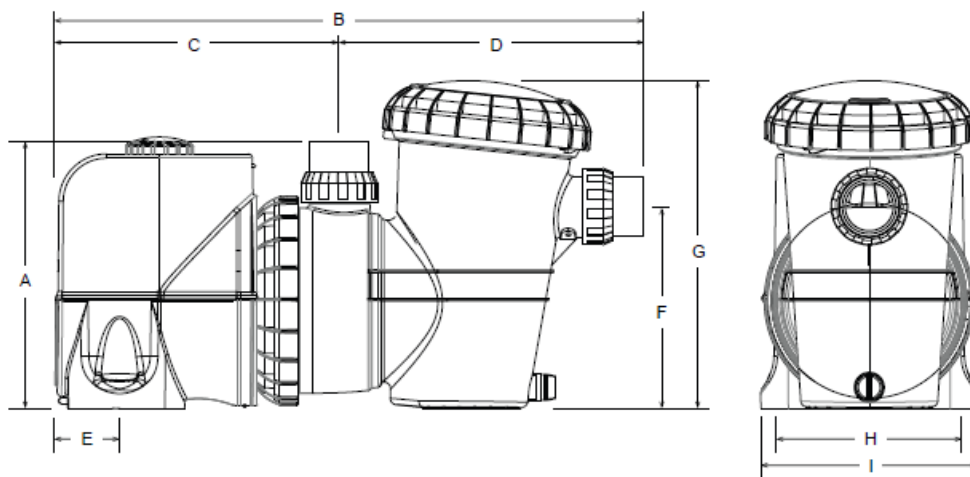
Technical Specifications

Model	SP200BTP
Head (m)	14.5
RPM	Speed 1 to 10
	Backwash Speed – Variable
Enclosure Class (IP)	45
Insulation Class	F
Voltage (V)	240V AC
Supply Frequency (Hz)	60
Motor Input Power (W / hp)	Speed Setting 1 – 100W / 0.13hp
	Speed Setting 5 – 350W / 0.47hp
	Speed Setting 10 – 800W / 1.07hp
	Backwash Setting – Varies

Operating Limits

Max Water temperature	104°F / 40°C
Max Ambient temperature	122°F / 50°C

Dimensions



DIMENSIONS (mm)												
Model	A	B	C	D	E	F	G	H	I	Mounting Holes Diameter	Inlet or Outlet P VC	Net Weight (kg)
SP200BTP	12	26.4	12.6	13.8	2.55	9	15	7.9	9.84	0.4	1½" / 2"	30.9

Installation of the SilensorPro Premium VSD200 Pump

Location

The pump should be located as close to the water as practicable and mounted on a firm base in a well-drained position, high enough to prevent any flooding. It is the installer's/owner's responsibility to locate the pump such that the nameplate can be easily read and the pump can be readily accessed for service.

Weather Protection

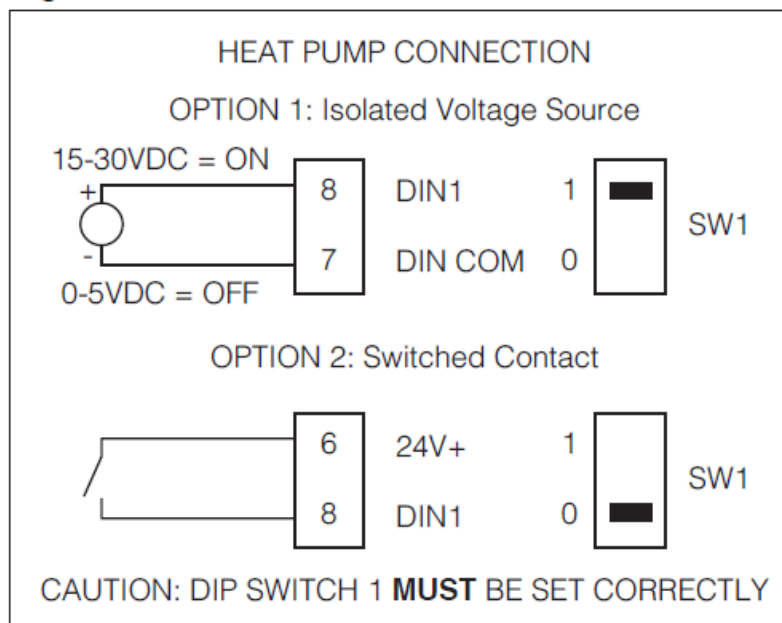
It is recommended that the pump is protected from the weather. Enclosures should be ventilated to prevent condensation build-up.

- Davey Water Products recommends that all installations be fitted with earth leakage or residual current protection devices.
- **CAUTION:** In the interest of safety, we advise that all brands and types of pool pumps must be installed per AS3000 wiring rules or equivalent.
- If the pump and filter are located below the pool water level, it is necessary to fit isolating valves in the pipe between the pump and skimmer box and in return pipe from the filter to the pool.
- The fittings on this product are constructed of ABS. Some PVC jointing compounds are incompatible with ABS. Check compound suitability before use.
- **WARNING!** Ensure that an electrical isolation switch is located with easy access so that the pump can be switched off in an emergency.

Heat Pump Connection

The SilensorPro VSD pump can be connected to a heat pump via a simple two-wire connection, see Figure 1. If your heat pump can output a signal when it has turned on, then the pump can use the signal to set the speed of the pump to a maximum. This maximises the efficiency of your heat pump to ensure maximum power savings. Dip switch 1 must be set correctly as per Figure 1.

Figure 1



Pipe Connection

Barrel unions are provided for connecting to the piping from the pool. The pumps are designed to accept 1½" or 2" (40mm/50mm) PVC fittings.

When plumbing the discharge pipe, ensure that the pipework does not interfere with the pumps speed dial.



The use of any pipe smaller than those specified above is not recommended. Suction piping should be free from all air leaks and any humps and hollows which cause suction difficulties. The discharge piping from the pump outlet should be connected to the inlet connection on the swimming pool filter (usually at the filter control valve).

- Barrel unions need to be hand-tightened. No sealant, glues or silicones are required.

Prior to using this pump you must ensure that:

Checklist

- Speed (including priming and backwash) setting chosen is a compatible setting with other pool equipment ☐
- The pump is installed in a safe and dry environment ☐
- The pump enclosure has adequate drainage in the event of leakage ☐
- Any transport plugs are removed ☐
- The pipe-work is correctly sealed and supported ☐
- The pump is filled with water to the inlet ☐
- The power supply is correctly connected ☐
- All steps have been taken for safe operation ☐
- The filter has been plumbed with 1½" (40mm) / 2" (50mm) pipe ☐
- The (App) schedule settings correspond with any other times in the system ☐

Low Energy Operation

Your SilensorPro VSD Pool Pump has variable speed settings:

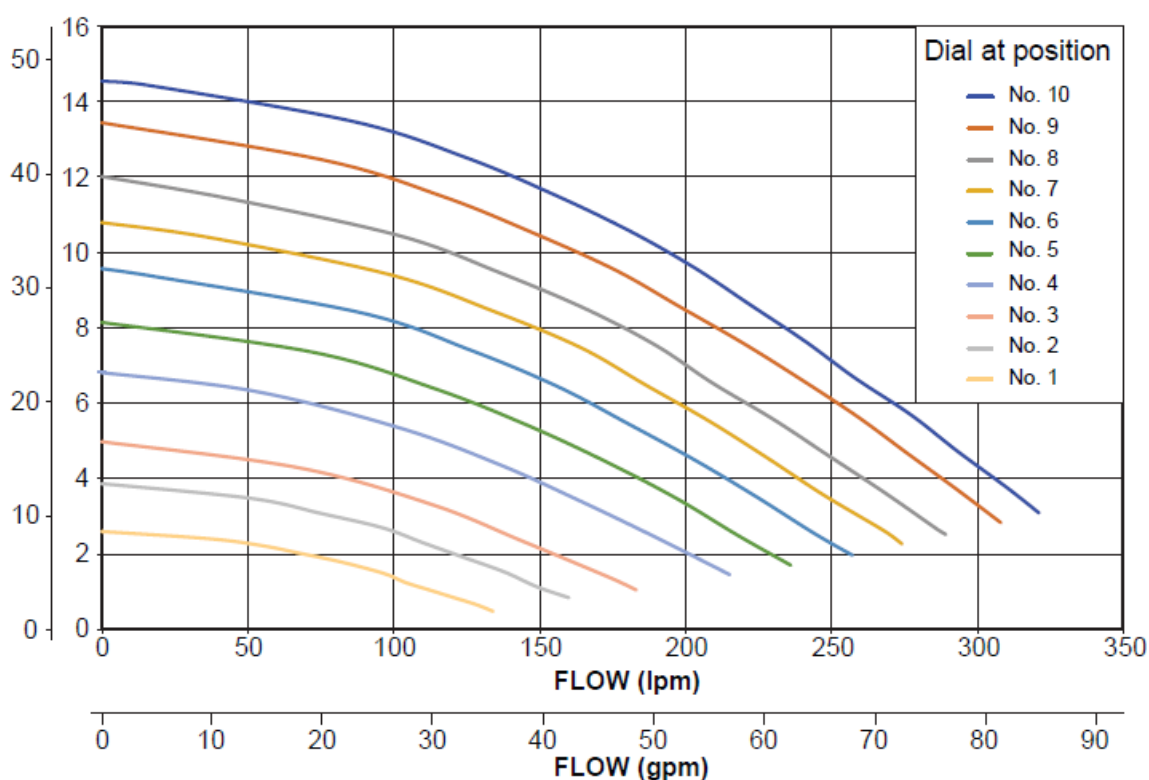
Model	Lowest Speed	Highest Speed	Backwash Speed
SP200BTP	Setting 1 – 1500 rpm	Setting 10 – 3200 rpm	Variable

- Speed 1 provides the lowest speed and therefore the greatest energy efficiency and savings.



Operation	Recommended Speed Setting
Pool Filtration	Speed 1 to 4
Suction pool cleaner operation	Speed 5 to 8
Backwashing your media filter	Backwash Speed
Manually cleaning your pool	Speed 9 to 10
Water Feature operation	
Spa Jet operation	
In-floor cleaning systems	
Solar pool heating	

(feet) (m) TOTAL HEAD



Features & Functionality

Your Davey SilensorPro VSD Pool Pump has several operational features:

- Multi-Coloured LED indicator light
 - Used for identifying required settings for programming time for full speed (Boost) cycling and warnings:
 - Solid Green = Normal Dial Operation
 - Slow Flashing Green = Backwash
 - Fast Flashing Green = AUX External Control Solid
 - White = Speed Compensation Active Slow
 - Flashing White = Time to Backwash

- Fast Flashing White = Fault detected – reset pump
- Slow Flashing Blue = Operated by Bluetooth
- Solid Blue = Bluetooth Pairing Mode
- Patented water cooled design for smooth and super quiet operation
 - The pump has a water cooled membrane and jacket around the motor which helps to keep the pump cool during operation
 - Waste heat off the motor is transferred into the pool water, helping to reduce pool heating energy costs
- Backwash Speed Cycling Technology
 - When in backwash mode the pump will cycle between a low and high speed to help air-rate and agitate the filter media for a more effective clean
 - Reduces wasted water during the backwash cycling process
- Full variable frequency drive with user friendly selectable speed dial
 - Provides for easy selection of desired filtration speed
 - No complicated digital push button controls
- Large 4.5 litre lint pot
 - Provides for longer intervals between cleaning

Bluetooth app set up

1. Open the “App Store” app that is available on your device.
2. Search “Davey Pool Pump”
3. Install the app on your device

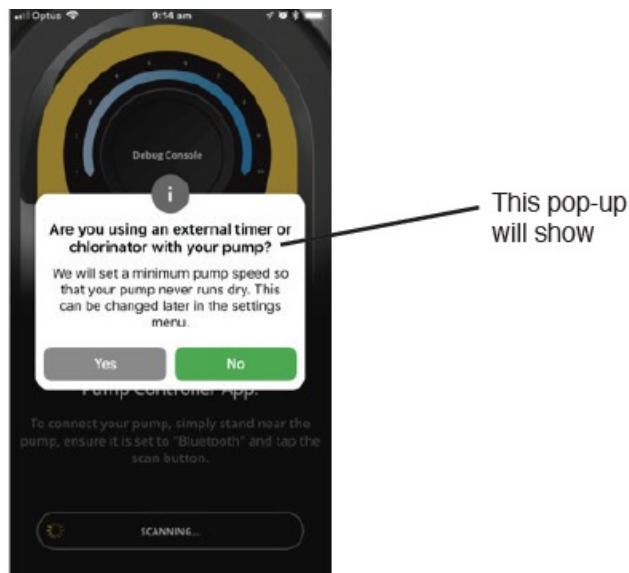
The app can be installed on to as many devices as desired, however, only one device can control the pump at any given time. The language and time of the app is the same as your device setting. The measuring units are automatically defaulted to your device’s region units, however, you can choose between Litres, Gallons or m3/hr.

Pairing a device to the pump

1. Open app on your smart device.
2. Turn dial on the pump from “off” to “Bluetooth”, and you will see the LED flash white for a second.
3. On your device, press the connect button.
4. When setting up for the first time ONLY, select “YES” to allow location.
5. Please note that the first time the devices are paired, there is a 2-minute time limit to do so before the procedure will have to be repeated.

External timer/chlorinator

- A pop-up will appear asking if you are using an external timer or chlorinator to control your pump. Please Select “YES” or “NO”

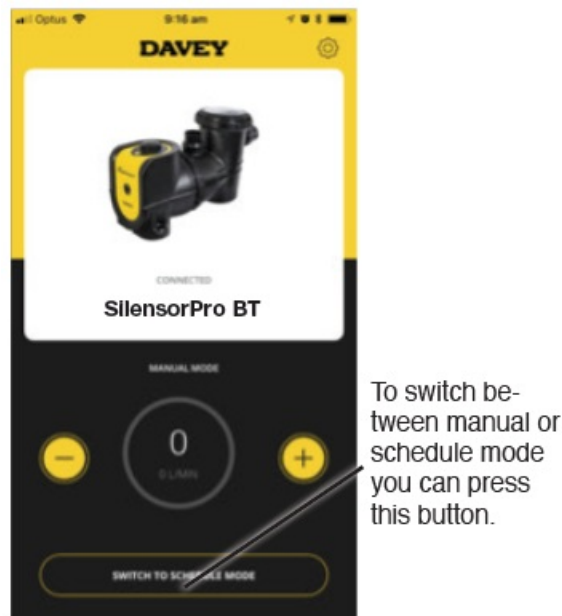


This is a safety function and will not allow the chlorinator to run without the pump working.

Two modes are available, depending on whether you wish to manually operate the pump or you can create a schedule of operation.

Manual mode

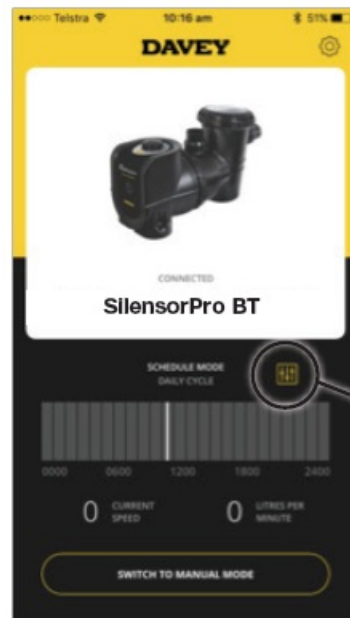
- If in schedule mode, press "switch to manual mode"
- The app will now be in manual mode and you can manually adjust the speed by pressing the (+/-) buttons.
- In manual mode, the pump will run at the set speed, even if the phone is not in range.
- Anytime the dial is switched to the Bluetooth position, it will run at the previous set speed after the priming cycle.



Schedule mode

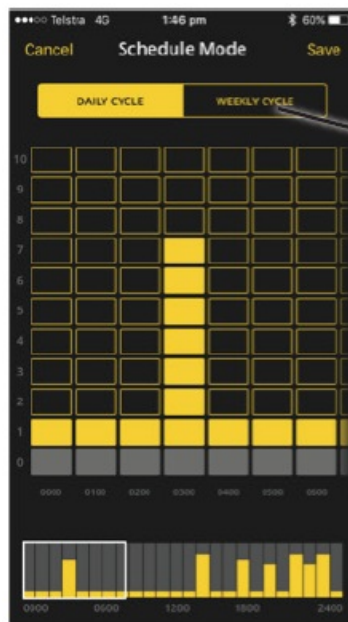
Schedule mode allows you to set the pump speed by day and time.

- There are two options (set a daily cycle or a weekly cycle) by pressing the desired box. This option allows you to create a standard "daily schedule" that will consistently operate the set levels every day.



Select to edit the schedule settings

- The “weekly cycle” option can be set for the entire week, giving you the ability to alter daily pump cycles depending on the weather, bather load etc.



Select if you would like the daily cycle or the weekly cycle.

Setting a schedule

- Select the box which relates to the time that you require the pump to operate.
- Select the speed setting you would like the pump to run at any time. Note: Settings of the pump (1-10) refers to the “slowest to fastest” operating speed of the pump).
- Once you are happy with your schedule, select “Save”. Communications between the device and the pump can take up to 20 seconds depending on the schedule selected.

Note: The row at the bottom of the screen indicates a summary of where the schedule is by day and by hour. This summary screen can easily be altered by swiping up or down the columns above.

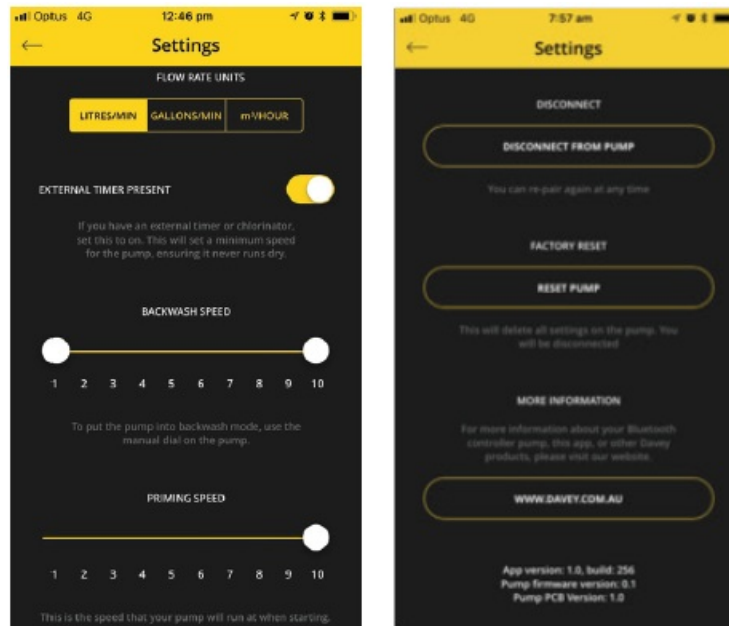
- **Please note:** If using a chlorinator, you must ensure that the “on” times on the pump correspond to the “on” times on the chlorinator.
 - The pump will remain in the last used mode, whether that be manual mode or schedule mode.

Settings

To alter setup settings, click on the settings icon:



- This will display the following screens (scroll down screen for full information).



Priming speed / max speed

Each time your pump starts it will go through 2 minutes of priming to ensure there is water in the system. You can adjust the speed in which it does this between 5 & 10. The speed you set will limit the maximum speed the pump will run in manual or schedule mode.

Backwash

Can be set as a single speed or set two speeds and the pump speed will “pulse” between the two settings. Minimum speed can be set between 1-10, maximum speed can only be set between 5-10.

“External Timer Present”

- Swipe this on or off, depending on whether you are using an external timer/chlorinator.

Disconnect function

The “disconnect from pump” function can be used to:

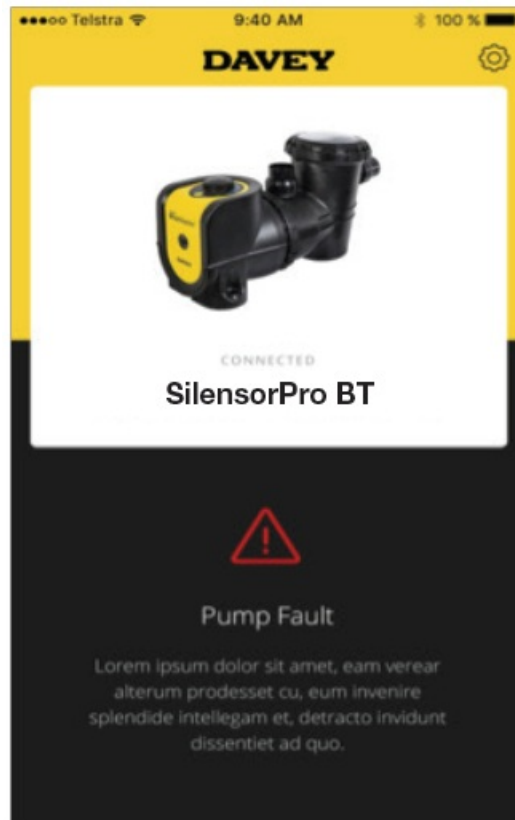
1. Allow another device to control the pump
2. Disconnect so that you will not automatically connect to the pump.
 - Please note that the Bluetooth connection will automatically disconnect after a minute of no

“Factory Reset”

- This will reset the pump back to factory configurations and allow you to start the setup process again.
- Select “reset pump”
- Turn dial to “off” position, then turn dial to “Bluetooth”
- You can then repair with your phone. This procedure is in place so that the pump cannot accidentally be reset.

Pump fault finding

In the instance that there is a fault, the following screen will appear, with a text description below the fault indicating how to remedy it. See the Fault table next page.



Fault title	Fault description
Pump Fault – Overcurrent	Check that the motor can rotate freely. Unplug for 1 minute and plug back in to reset. If the problem persists call Davey or an authorized repair agent.
Pump Fault – Over Voltage	Over voltage fault. Unplug for 1 minute and plug back in to reset.
Pump Fault – Earth Fault	Unplug for 1 minute and plug back in to reset, if the problem persists, contact your nearest dealer.
Pump Fault – System Fault	Unplug for 1 minute and plug back in to reset.
Pump Fault – Under Voltage	Supply voltage issue. When power is back to normal, unplug for 1 minute and plug back in to reset.
Pump Fault – Output Phase Fault	Unplug for 1 minute and plug back in to reset, if the problem persists, contact your nearest dealer.

Pump Fault – Under Temperature	Pump is too cold (temperature below -10°C).
Pump Fault – Over Temperature	Pump is too hot. Check the ambient temperature. Set lowest speed possible if the ambient temperature is too high.
Pump Fault – Motor Stalled	Check that the motor can rotate freely. Unplug for 1 minute and plug back in to reset.
Pump Fault – Motor Over Temperature	Unplug for 1 minute and plug back in to reset and turn down the pump speed, if the problem persists, contact your nearest dealer.
Pump Fault – Underload/Loss of Prime	Check if there's enough water inside the pump. Unplug for 1 minute and plug back in to reset, if the problem persists, contact your nearest dealer.
Pump Fault – Power Overload Pump Fault – EEPROM Checksum Pump Fault – Watchdog Error Pump Fault – Back EFM Protection Pump Fault – Thermistor Fault Pump Fault – power overload Pump Fault – Safe Torque Off Pump Fault – Internal Bus Communication Pump Fault – Application Error Pump Fault – IGBT Temperature High Pump Fault – 4mA Analogue Input Fault Pump Fault – External Fault Pump Fault – Keypad Communication Error Pump Fault – Fieldbus Communication Error Pump Fault – Fieldbus Interface Error.	Unplug for 1 minute and plug back in to reset. If the problem persists call Davey or an authorized repair agent.

Operating your Suction Pool Cleaner

Before installing or purchasing a pool cleaner for use with your SilensorPro pool pump, it is important to know the minimum flow rates required for it to operate effectively.

To operate a suction pool cleaner with your SilensorPro VSD pump

1. Activate the High Flow setting (10) and allow the pump to fully prime by running for around 2 minutes. You will know the pump is primed when you can see a strong flow of water through the clear leaf basket lid.
2. When all air is expelled from the leaf basket, connect the pool cleaner hose firmly into the skimmer plate or dedicated wall suction.
3. Select the speed setting that enables best performance from your suction pool cleaner. Speed 3 to 7 should be

- ample for most cleaners, however if the cleaner requires better performance, select speeds 7 to 10.
4. The cleaner should only be connected for as long as is required to clean the surface of your pool. When cleaning is complete, disconnect the cleaner and remove the skimmer plate from the skimmer box.
 5. Reactivate the most efficient speed setting for daily filtration. Speeds 1 to 4 is recommended.

NOTE: To get optimum energy efficiency from your SilensorPro DO NOT keep the suction pool cleaner connected when cleaning is not required.

Maintenance: Emptying the Strainer Basket

The strainer basket should be inspected frequently through the transparent lid and emptied when a build up of rubbish is evident. The directions below should be followed.

1. Switch off pump.
2. Unscrew the strainer basket lid anti-clockwise and remove.
3. Remove the strainer basket by lifting upwards from its housing.
4. Empty the trapped refuse from the basket. Hose out with water if necessary.

NOTE: NEVER knock the plastic basket on a hard surface as it will cause damage.

5. Check the strainer basket for cracks, replace the strainer basket in the pump if OK.
6. Replace the lid and ensure that it seals on the large rubber o-ring. Firm hand tightness only is required. The o-ring & thread can be lubricated with Hydraslip or equivalent products.

- Failure to undertake regular maintenance may cause damage not covered by warranty.
- Power supply to this pump needs to be through an RCD, having a rated leakage current not exceeding 30mA.

Trouble Shooting

If the pump runs but there is no water flow or water flow is reduced, the following condition may apply:

1. The filter requires backwashing or it is blocked. Refer to the relevant section in the Filter Manual.
2. The pump is not primed. Re-prime as per instruction in 'Starting the pump'
3. There are air leaks in the suction piping. Check all piping and eliminate leaks, also check for a loose strainer basket lid. Air bubbles in the water flowing back to the pool would indicate a leak in the suction to the pump allowing air to enter the pipework.
4. A leaking pump shaft seal may also prevent operation. Evidence of this would be water on the ground under the pump.
5. The pump is not able to get water from the pool. Check that the valves to the pump are fully open and that the pool water level is up to the skimmer box.
6. Blockage in the piping or pump. Remove the strainer basket and check for any blockage to the pump impeller entry. Check the skimmer box for blockage.

If the pump does not operate, the following conditions may apply:

1. The power is not connected. For 240 volt only, check the power point by plugging in a portable appliance to ensure power is available. Also check fuses and the main power supply switch
2. Automatic overload is tripped. The pump has an in-built thermal overload which will reset automatically after the

motor has cooled following an overheating period. Determine the cause of the overload tripping and rectify.

Reset the pump by switching the power OFF for 30 seconds.

3. Blockage is preventing the pump from rotating.

Removal of the Pump from Pipework

Should it be necessary to remove the pump, follow these instructions:

1. Switch off the power and remove the plug from the power source.

NOTE: If the pump is wired into a time clock or another automatic control, the wiring should be removed by a qualified technician.

2. Close the water valves on the pool return and the pump inlet pipework.

3. Remove the discharge & suction barrel unions taking care not to lose the o-rings.

4. Move the pipework with the barrel unions attached until the pump can be pulled clear.

NOTE: When making any enquiries about your SilensorPro be certain to quote the model number from the nameplate located on the motor.

Water Quality

Maintaining balanced water chemistry is important to the life of your pool pump. This pump is designed to be used with Pool & Spa water, balanced in accordance with Langelier Saturation Index, with a pH level of between 7.2 and 7.6 and is regularly treated with a chlorine sanitising agent with the level not exceeding 3.0 ppm. Please consult your local pool shop regularly to have your water tested.

Davey Warranty

Davey Water Products Pty Ltd (Davey) warrants all products sold will be (under normal use and service) free of defects in material and workmanship for a minimum period of one (1) year from the date of original purchase by the customer as marked on the invoice, for specific warranty periods for all Davey products visit daveywater.com.

This warranty does not cover normal wear and tear or apply to a product that has:

- been subject to misuse, neglect, negligence, damage or accident
- been used, operated or maintained other than by Davey's instructions
- not been installed by the Installation Instructions or by suitably qualified personnel
- been modified or altered from original specifications or in any way not approved by Davey
- had repairs attempted or made by other than Davey or its authorised dealers
- been subject to abnormal conditions such as incorrect voltage supply, lightning or high voltage spikes, or damages from electrolytic action, cavitation, sand, corrosive, saline or abrasive liquids,

The Davey warranty does not cover the replacement of any product consumables or defects in products and components that have been supplied to Davey by third parties (however Davey will provide reasonable assistance to obtain the benefit of any third-party warranty).

To make a warranty claim:

- If the product is suspected of being defective, stop using it and contact the original place of purchase. Alternatively, phone Davey Customer Service or send a letter to Davey as per the contact details below
- Provide evidence or proof of date of the original purchase

- If requested, return the product and/or provide further information concerning the claim. Returning the product to the place of purchase is at your cost and is your responsibility.
- The warranty claim will be assessed by Davey based on their product knowledge and reasonable judgment and will be accepted if:
 - a relevant defect is found
 - the warranty claim is made during the relevant warranty period; and
 - none of the excluded conditions listed above apply
- The customer will be notified of the warranty decision in writing and if found to be invalid the customer must organise the collection of the product at their expense or authorize its disposal.

If the claim is found to be valid Davey will, at its option, repair or replace the product free of charge. The Davey warranty is in addition to rights provided by local consumer law. You are entitled to a replacement or refund for a major failure and compensation for any other reasonably foreseeable loss or damage. You are also entitled to have the goods repaired or replaced if the goods fail to be of acceptable quality and the failure does not amount to a major failure. For any internet-connected products the consumer is responsible for ensuring a stable internet connection. In the event of a network failure, the consumer will need to address the concern with the service provider. The use of an App is not a substitute for the User's own vigilance in ensuring the product is working to expectation. Use of a Smart Product App is at the User's own risk. To the fullest extent permitted by law Davey disclaims any warranties regarding the accuracy, completeness or reliability of App data. Davey is not responsible for any direct or indirect loss, damage or costs to the User arising from its reliance on internet connectivity. The User indemnifies Davey against any claims or legal actions from them or others relying on internet connectivity or App data in this regard. Products presented for repair may be replaced by refurbished products of the same type rather than being repaired. Refurbished parts may be used to repair the products. The repair of your products may result in the loss of any user-generated data. Please ensure that you have made a copy of any data saved on your products. To the fullest extent permitted by law or statute, Davey shall not be liable for any loss of profits or any consequential, indirect, or special loss, damage, or injury of any kind whatsoever arising directly or indirectly from Davey products. This limitation does not apply to any liability of Davey for failure to comply with a consumer guarantee applicable to your Davey product under local laws and does not affect any rights or remedies that may be available to you under local laws. For a complete list of Davey Dealers visit our website (daveywater.com) or call:

Davey Water Products Pty Ltd ABN 18 066 327 517

- daveywater.com

NEW ZEALAND

- 7 Rockridge Avenue,
- Penrose, Auckland 1061
- **Ph:** 0800 654 333
- **Fax:** 0800 654 334
- **Email:** sales@dwp.co.nz

NORTH AMERICA

- **Ph:** 1-888-755-8654
- **Email:** info@daveyusa.com

AUSTRALIA

Head Office


- 6 Lakeview Drive,
- Scoresby, Australia 3179
- **Ph:** 1300 232 839
- **Fax:** 1300 369 119
- **Email:** sales@davey.com.au

MIDDLE EAST

- **Ph:** +971 50 6368764
- **Fax:** +971 6 5730472
- **Email:** info@daveyuae.com

Davey is a trademark of Davey Water Products Pty Ltd. © Davey Water Products Pty Ltd 2023.

Documents / Resources

	<p>DAVEY SP200BTP Variable Speed Pool Pump [pdf] Instruction Manual SP200BTP Variable Speed Pool Pump, SP200BTP, Variable Speed Pool Pump, Speed Pool Pump, Pool Pump, Pump</p>
-------------------------------------------------------------------------------------	-----------------------------------------------------------------------------------------------------------------------------------------------------------------------------------------------------

References

- [D Home - Davey Network](#)
- [User Manual](#)

Manuals+, Privacy Policy

This website is an independent publication and is neither affiliated with nor endorsed by any of the trademark owners. The "Bluetooth®" word mark and logos are registered trademarks owned by Bluetooth SIG, Inc. The "Wi-Fi®" word mark and logos are registered trademarks owned by the Wi-Fi Alliance. Any use of these marks on this website does not imply any affiliation with or endorsement.