



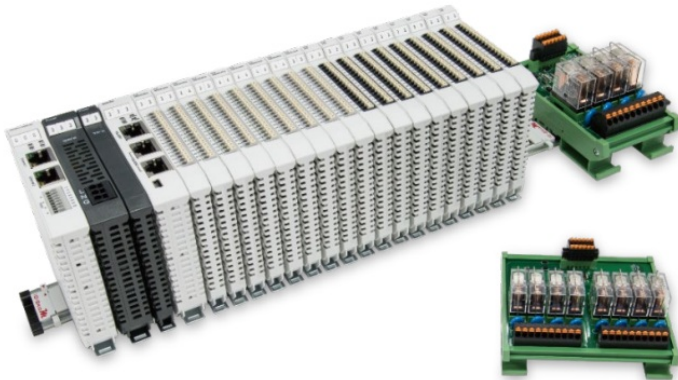
DAUDIN AH500 Series Modbus TCP Connection User Manual

[Home](#) » [DAUDIN](#) » DAUDIN AH500 Series Modbus TCP Connection User Manual 



DAUDIN CO., LTD.

2302EN
V1.0.0



iO-GRID[™] and AH500 Series Modbus TCP Connection Operating Manual

Contents

- [1 Remote I/O Module System Configuration List](#)
- [2 Gateway Parameter Settings](#)
- [3 AH500 Connection Setup](#)
- [4 Documents / Resources](#)
- [5 Related Posts](#)

Remote I/O Module System Configuration List

Part No.	Specification	Description
GFGW-RMO IN	Modbus TCP-to-Modbus RTU/ASCII, 4 Ports	Gateway
GFMS-RMO I S	Master Modbus RTU, I Port	Main Controller
GFDI-RMO I N	Digital Input 16 Channel	Digital Input
GFDO-RMO IN	Digital Output 16 Channel / 0.5A	Digital Output
GFPS-0202	Power 24V / 48W	Power Supply
GFPS-0303	Power 5V / 20W	Power Supply
0170-0101	8 pin RJ45 female connector/RS-485 Interface	Interface Module

1.1 Product Description

1. The gateway is used externally to connect with AH500's communication port (Modbus TCP)
2. The main controller is in charge of the management and dynamic configuration of I/O parameters and so on.
3. The power module and interface module are standard for remote I/Os and users can choose the model or brand they prefer.

Gateway Parameter Settings

This section details how to connect a gateway to AH500. For detailed information regarding **iQ-GRID^m**, please refer to the **iQ-GRID^m**-Series Product Manual

2.1 i-Designer Program Setup

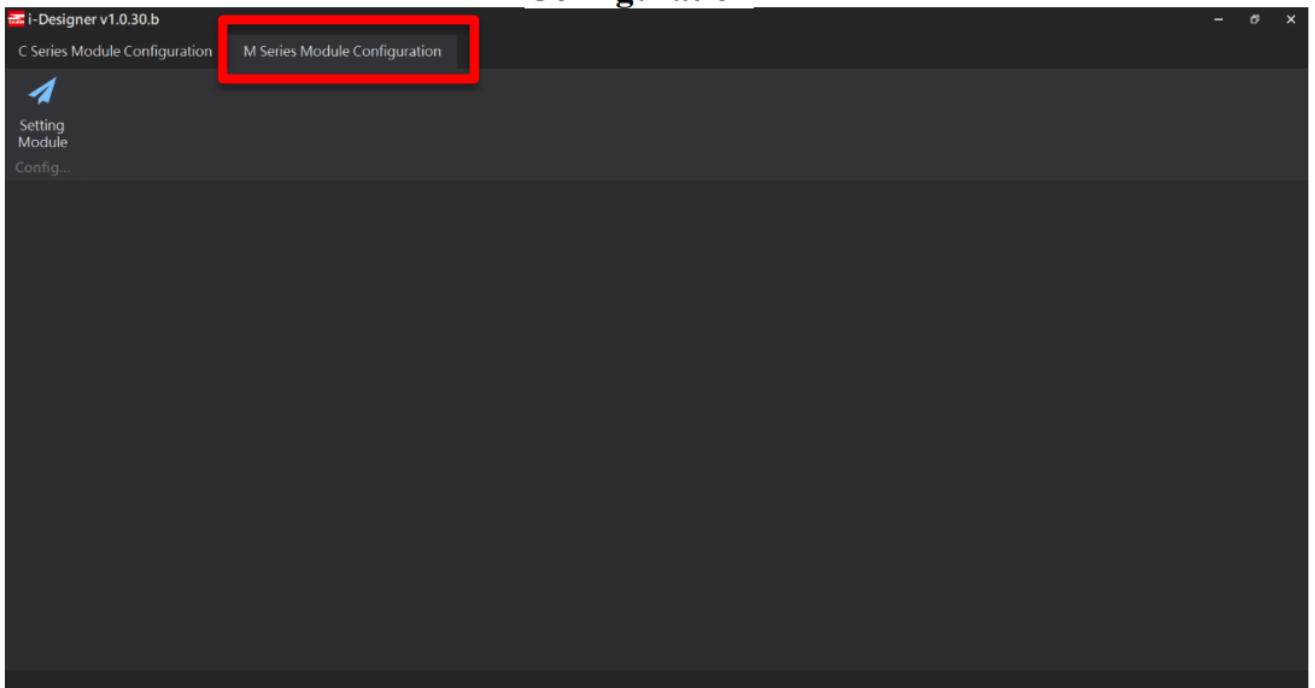
1. Make sure that the module is powered and connected to the gateway module using an Ethernet cable



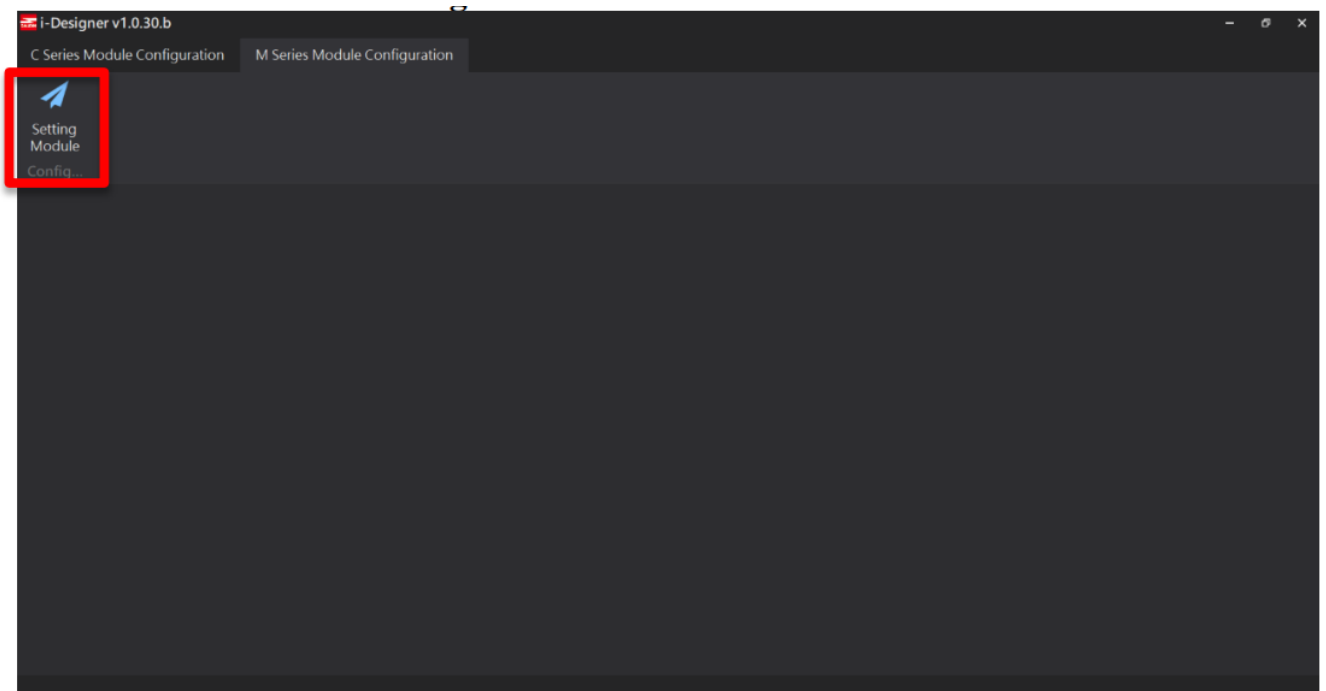
2. Click to launch the software



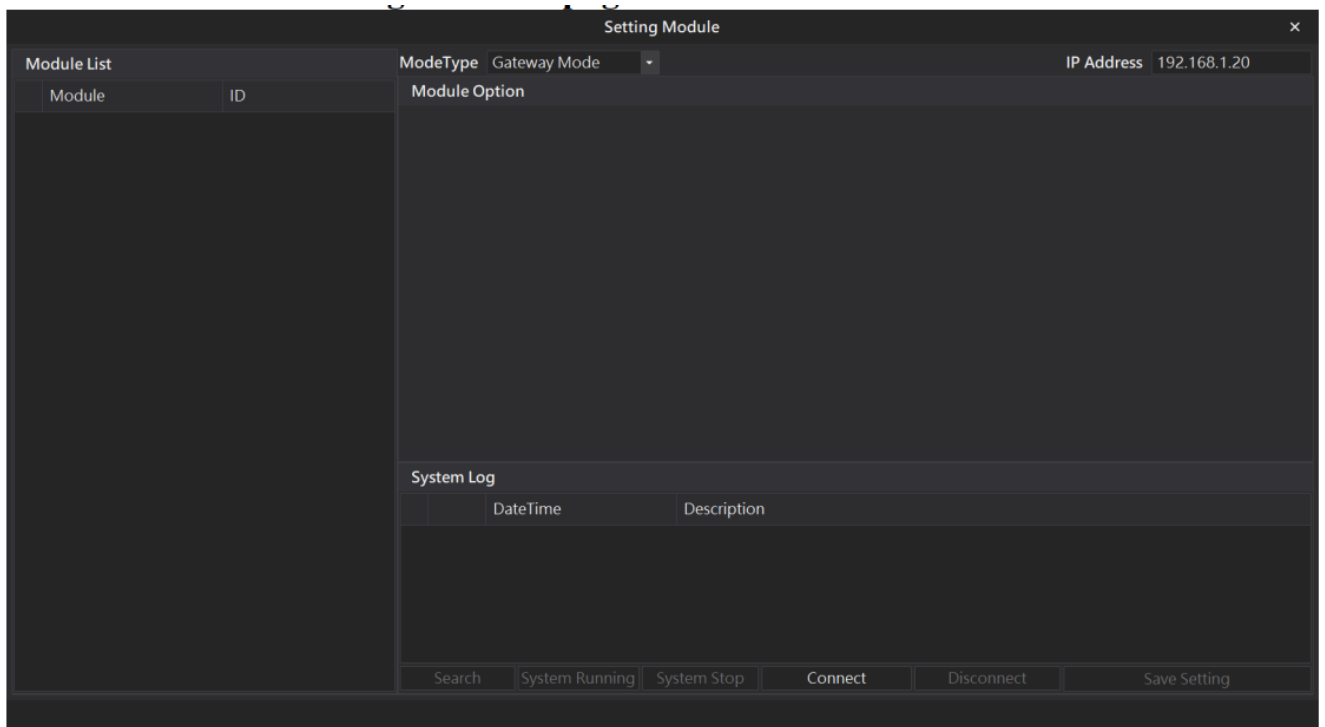
3. Select "M Series Module Configuration"



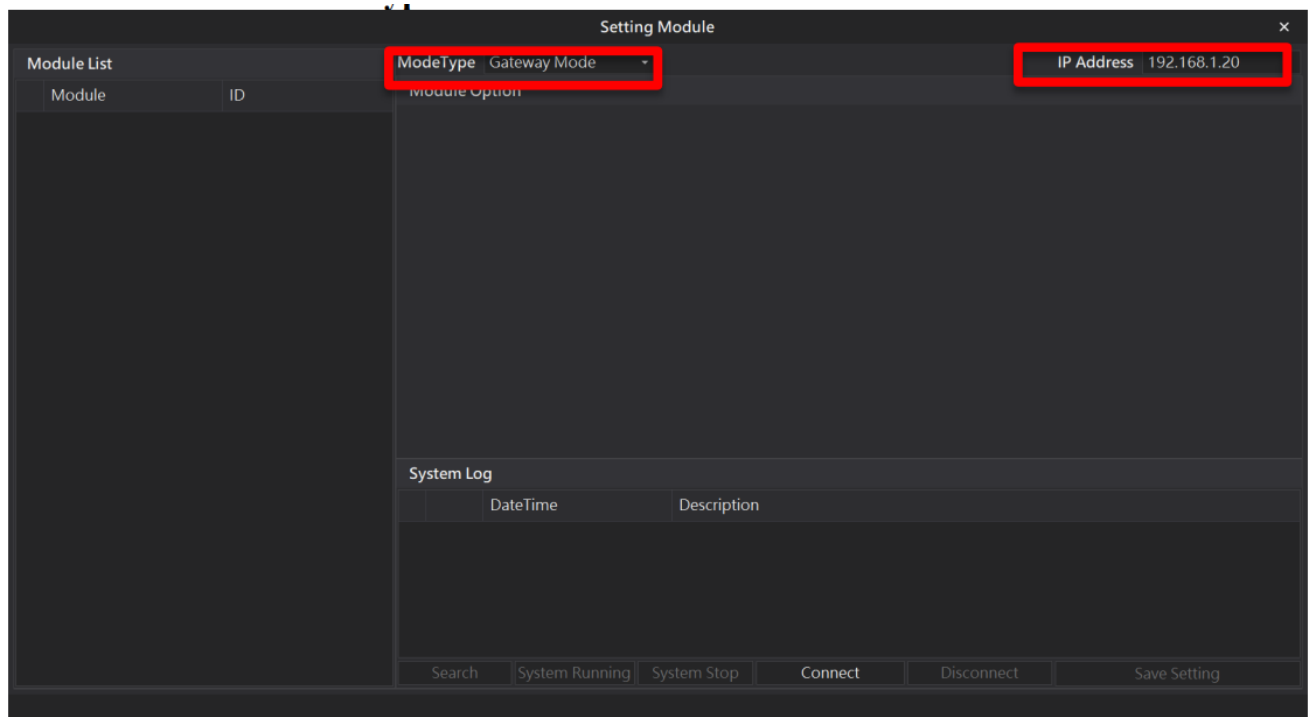
4. Click on the “Setting Module” icon



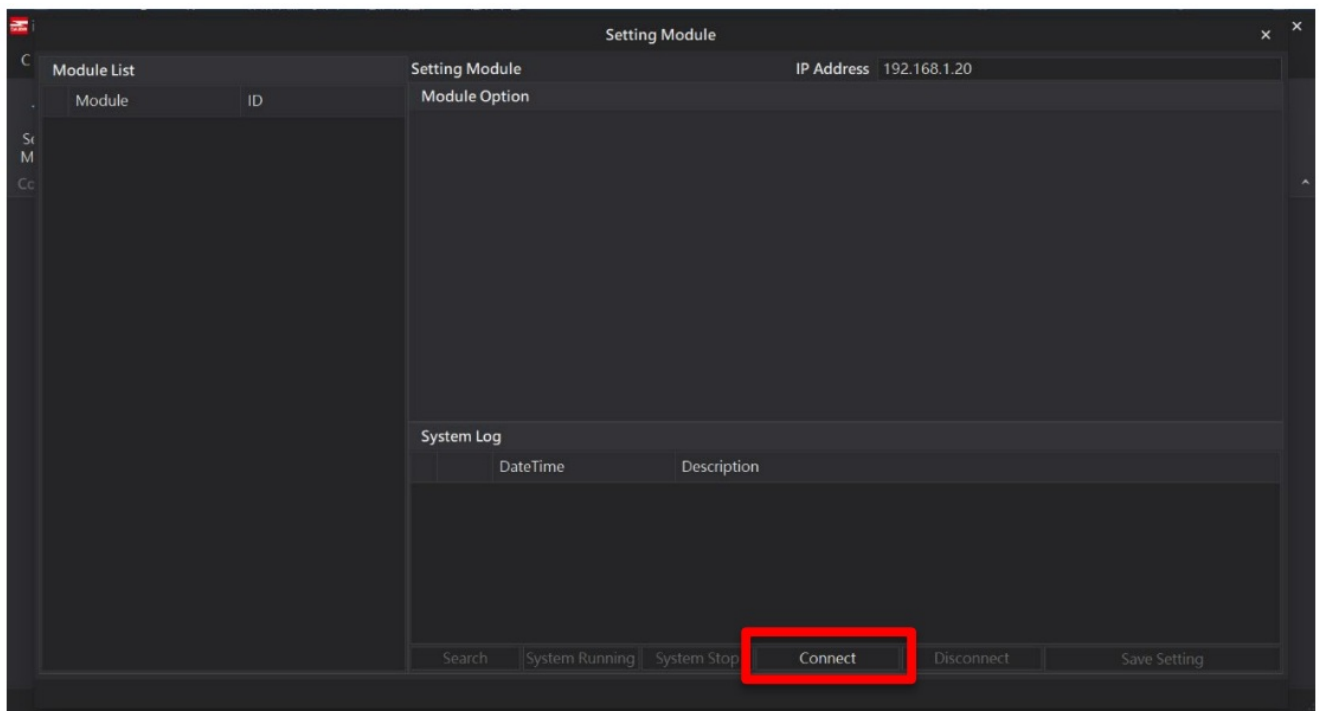
5. Enter the “Setting Module” page for M-series



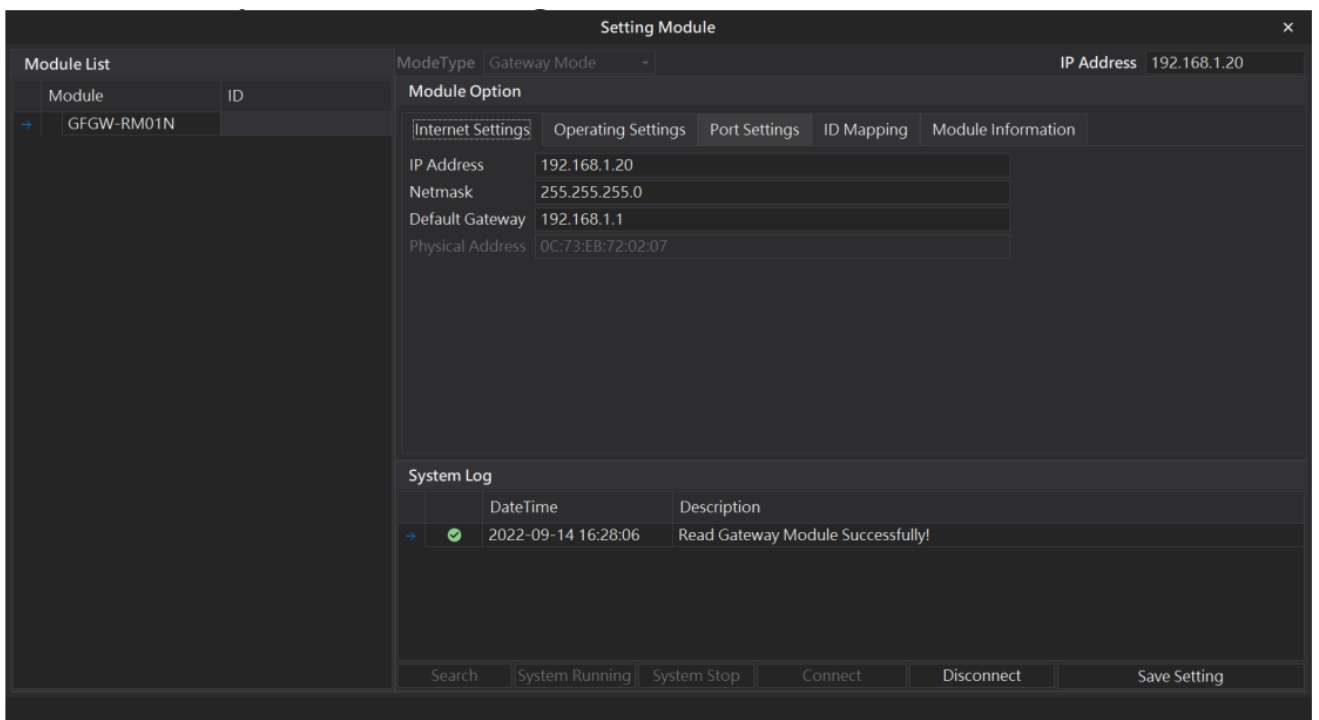
6. Select the mode type based on the connected module



7. Click on "Connect"



8. Gateway Module IP Settings



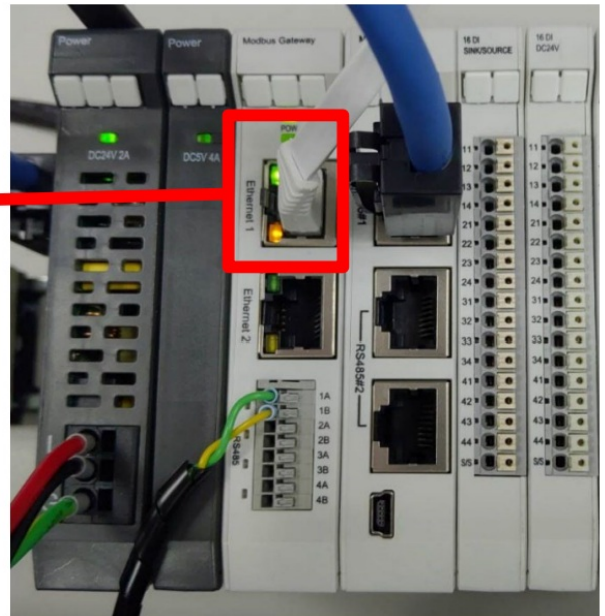
Note: The IP address must be in the same domain as the controller equipment

AH500 Connection Setup

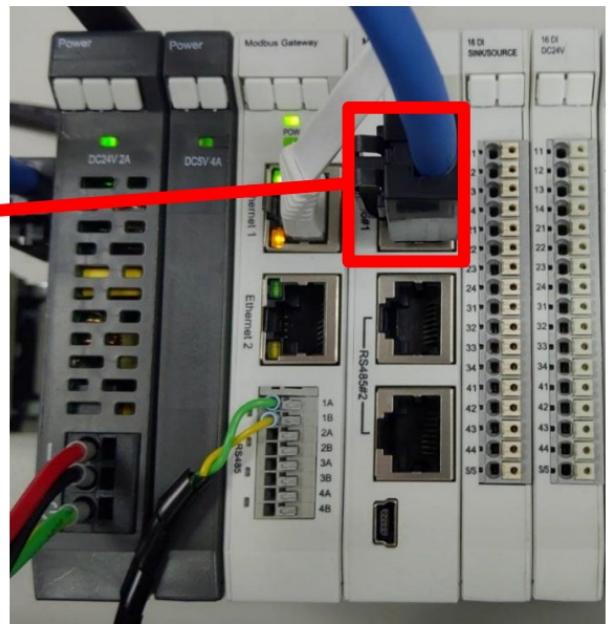
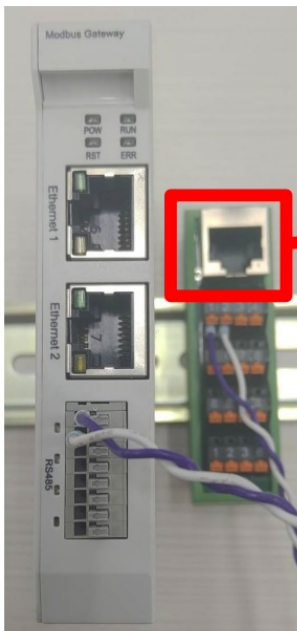
This chapter explains how to use the ISPSOFT program to connect AH500 with a gateway. For detailed information, please refer to the ISPSOFT User Manual

3.1 AH500 Hardware Connection

1. The Ethernet port is on the top of AH500 and can be connected to the gateway

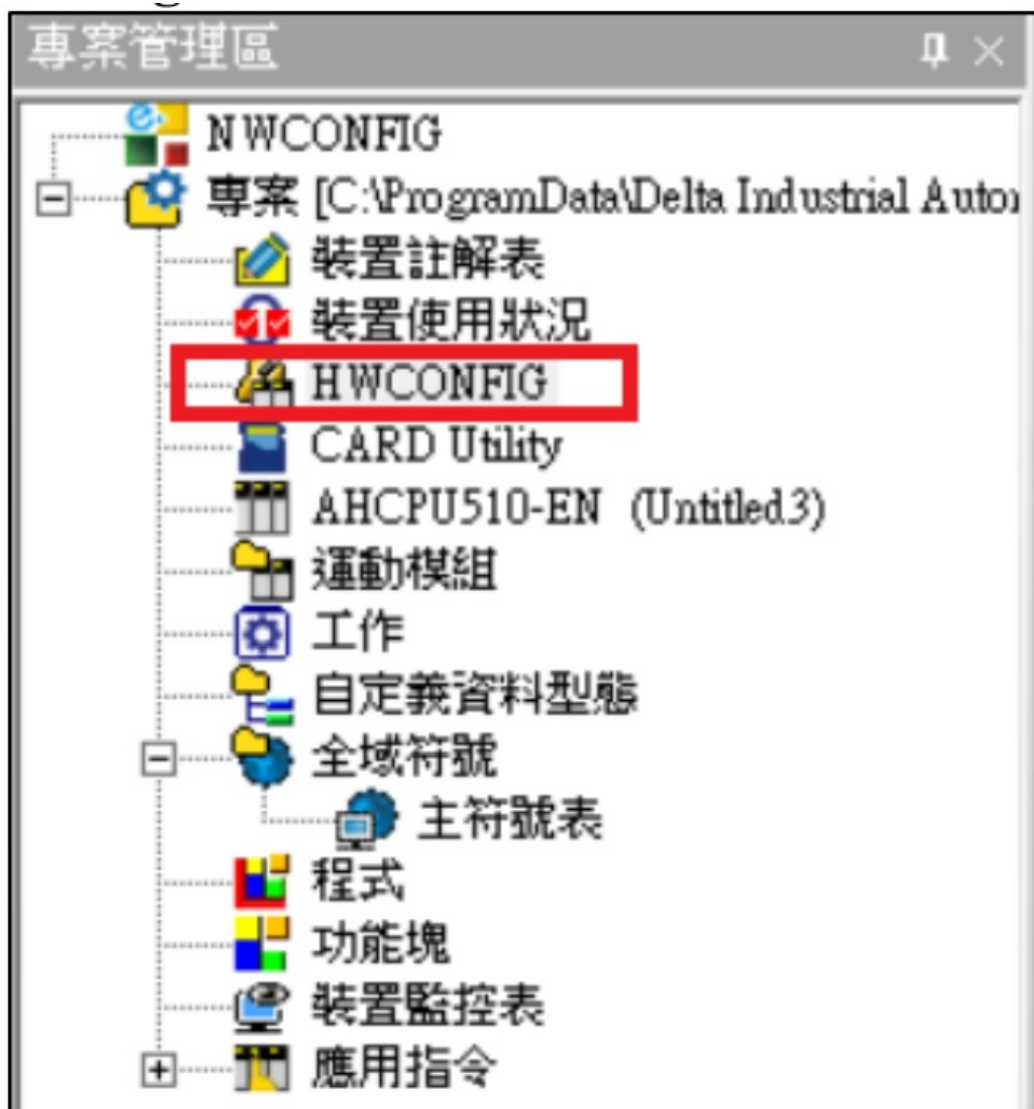


2. The gateway's first 485 port is connected to the interface module 0170-0101 before being connected to the control module via an Ethernet cable



3.2 AH500 Connection Setup

1. Launch ISPSOft, create a new file and double-click "HWCONFIG" on the project management section on the left to enter the configuration page



2. Right click on the PLC icon and select “Summary” under “Hardware Configuration”



3. or this demonstration, click on “Ethernet – Basic Settings”

編輯區

硬體配置

概括 資料交換

AHCPU510-EN

+ 系統資訊

通訊埠

乙太網路 - 基本設定

+ 乙太網路 - 進階設定

乙太網路 - 基本設定

名稱	設定值	單位	預設值	最小值	最大值
IP 定址模式	靜態		靜態	-	-
IP 位址	192.168.1.1		192.168.1.1	1.1.1.1	223.255.255.255
網路遮罩	255.255.255.0		255.255.255.0	0.0.0.0	255.255.255.255
閘道位址	192.168.1.1		192.168.1.1	1.1.1.1	223.255.255.255
連線保持時間	60	秒	60	1	65535

預設 匯入 匯出

IP Address: To be set the same as the gateway domain at 192.168.1.XXX.

4. IV. Click on “Data Exchange” on the left to switch to the Data Exchange page and select the desired COM PORT (Ethernet in this case). Make sure to select , otherwise the data communication will not be initiated. Select “Add” or modify existing fields to set up the communication

編輯區

硬體配置

概括 資料交換

- CPU

乙太網路

啟動方式： 永遠執行

新增 編輯 上移 下移 複製 刪除 全部刪除

啟動	IP 位址	本地位址	方向	遠端位址	數量
1	192.168.1.20	D0	←	1000	1
		D10	→	2000	1

5. “Data Exchange Settings” image and details:

資料交換設定

本地設定

☒ 啟動

最短更新週期 (毫秒) ☒ 套用至全部

連線逾時 (毫秒) ☒ 套用至全部

☒ 支援同步讀寫 (功能碼: 0x17)

遠端設定

遠端站號

IP 位址

遠端裝置種類

讀取

本地起始位址 D0 - D32767 遠端起始位址 (Hex) 0 - FFFF 數量 (Word)

D Register ← MODBUS Register Hex

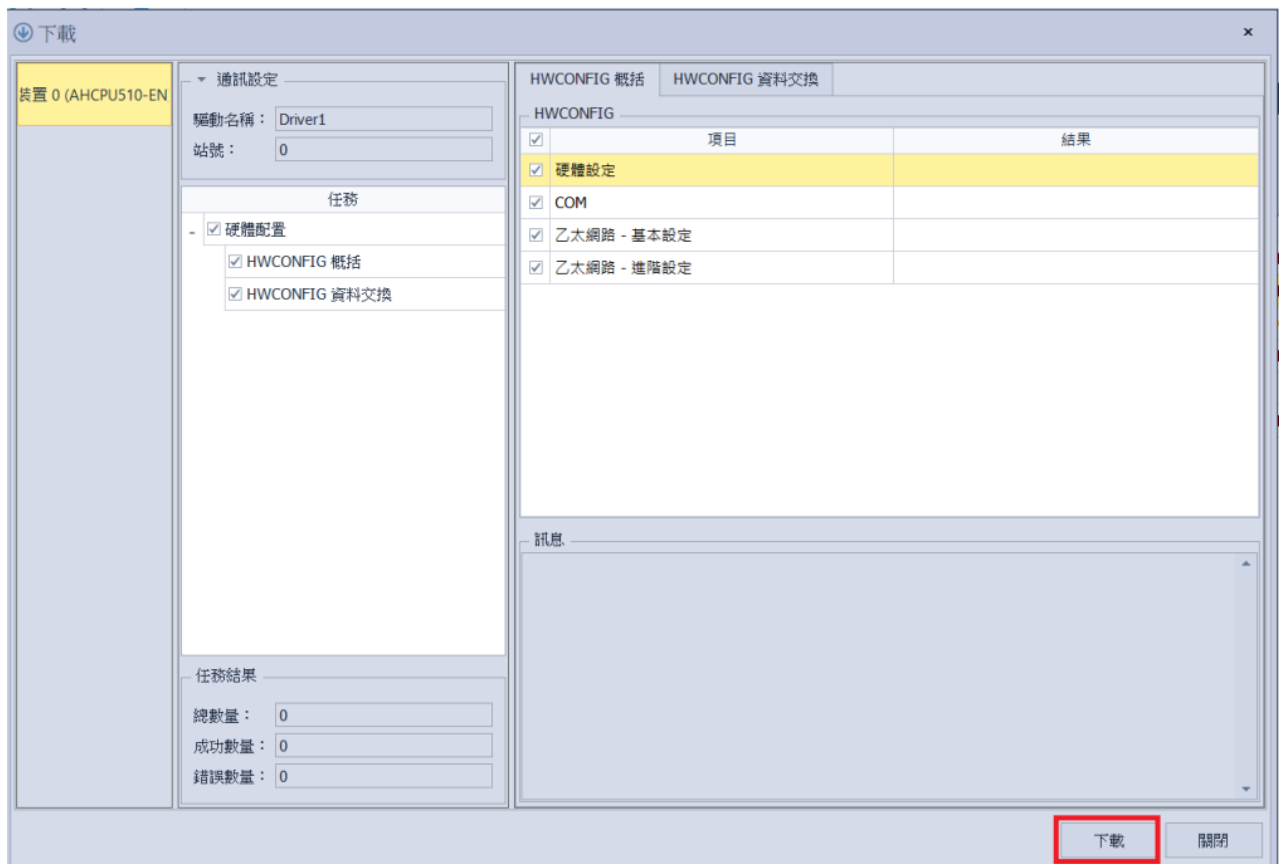
寫入

本地起始位址 D0 - D32767 遠端起始位址 (Hex) 0 - FFFF 數量 (Word)

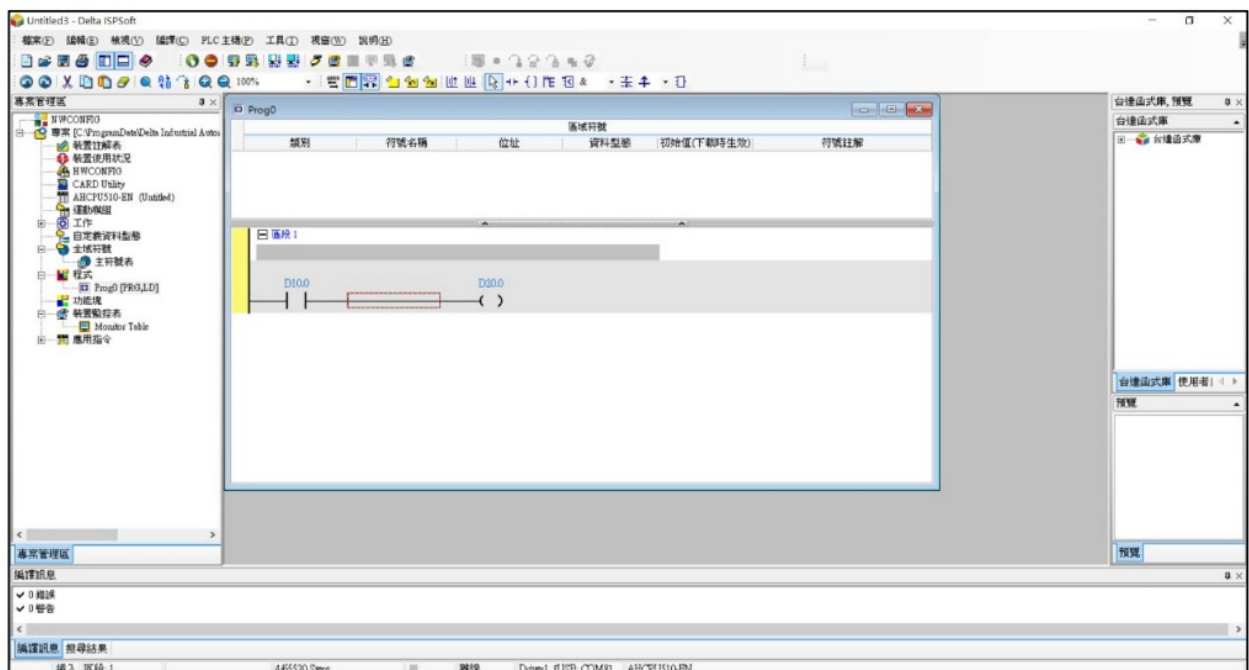
D Register → MODBUS Register Hex

確定 取消


1. To use that communication, make sure to check "Initiate"
2. When there are too many addresses to read and write, increase the "Minimum Refresh Cycle".
3. **iQ-GRIDTM** control module can accept 0x17 function code while reducing the communication time by one writing and one reading
4. The IP address should be the IP address of the gateway you want to connect
5. For "Remote Device Type", select "Standard Modbus Device"
- ※ **iQ-GRIDTM** 's first GFDI-RM01N has the register address at 1000(HEX)
- ※ **iQ-GRIDTM** 's first GFDO-RM01N has the register address at 2000(HE)
6. Once the setup is complete, click on "Download" for the setting to be incorporated in PLC



7. Once the register for data storage is set up following the instructions above in the ISPSoft program, it is ready to use



Documents / Resources

	<p>DAUDIN AH500 Series Modbus TCP Connection [pdf] User Manual</p> <p>AH500 Series Modbus TCP Connection, AH500 Series, Modbus TCP Connection, TCP Connection, Connection</p>
--	---