 **DATREND**
Systems Inc.
MN-112c
Automated ESU
Analyzer



DATREND MN-112c Automated ESU Analyzer User Guide

[Home](#) » [DATREND](#) » DATREND MN-112c Automated ESU Analyzer User Guide 

Contents

- [1 DATREND MN-112c Automated ESU Analyzer](#)
- [2 Product Information](#)
- [3 Product Usage Instructions](#)
- [4 Package Contents](#)
- [5 Using Instruction](#)
- [6 Documents / Resources](#)
 - [6.1 References](#)
- [7 Related Posts](#)



DATREND MN-112c Automated ESU Analyzer



Product Information

- **Model:** vPad-RFTM Automated ESU Analyzer
- **Package Contents:** MN-112c 6100-092 vPad-RF Quick Start Guide 2024-Feb-15 (x2)

Product Usage Instructions

1. Unboxing and Setup

Start by unpacking the vPad-RFTM Automated ESU Analyzer package. Check that all components, including the Quick Start Guide, are present.

2. Power On

Connect the vPad-RF according to the guide provided. Power on the device by following the instructions in the Quick Start Guide.

3. Calibration

Perform the initial calibration of the vPad-RF as outlined in the user manual to ensure accurate measurements.

4. Testing

Follow the testing procedures specified in the user manual to evaluate the ESU Analyzer's performance.

Frequently Asked Questions (FAQ)

- **Q: How often should I calibrate the vPad-RF?**

A: It is recommended to calibrate the vPad-RF Automated ESU Analyzer before each testing session to maintain accuracy.

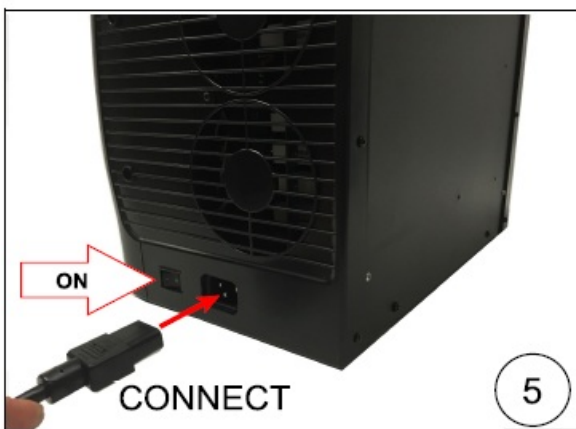
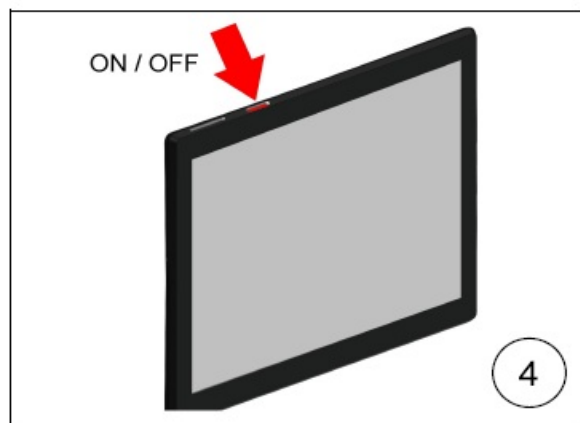
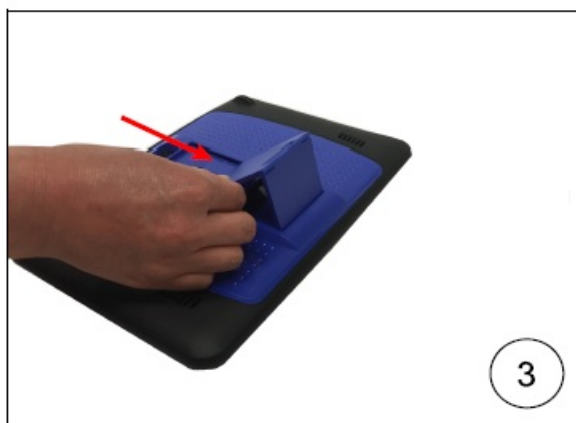
- **Q: Can I use the vPad-RF for all types of ESU devices?**

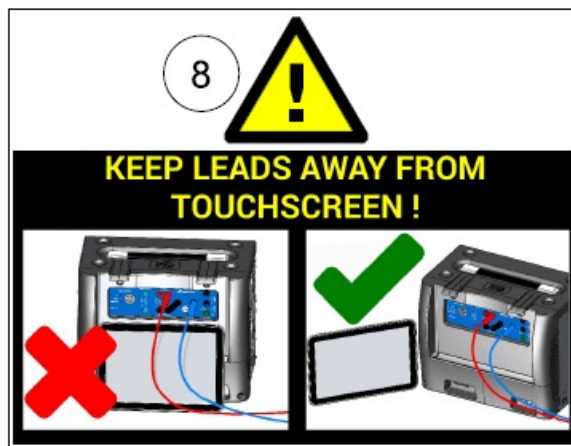
A: The vPad-RF is designed to work with a wide range of ESU devices, but it is essential to refer to the user manual for compatibility information.

Package Contents

- ESU ANALYZER (vPad-RF)
- POWER CORD (3000-xxx)
- USB CABLE (3140-391)
- SHORTING JUMPER x 3 (3220-600)
- TESTING CABLES (7200-570, 7200-572, 7200-574, 7200-575, 7500-430)

Using Instruction





Documents / Resources



[DATREND MN-112c Automated ESU Analyzer](#) [pdf] User Guide
 MN-112c, 6100-092, MN-112c Automated ESU Analyzer, MN-112c, Automated ESU Analyzer, ESU Analyzer, Analyzer

References

- [User Manual](#)

Manuals- Privacy Policy

This website is an independent publication and is neither affiliated with nor endorsed by any of the trademark owners. The "Bluetooth®" word mark and logos are registered trademarks owned by Bluetooth SIG, Inc. The "Wi-Fi®" word mark and logos are registered trademarks owned by the Wi-Fi Alliance. Any use of these marks on this website does not imply any affiliation with or endorsement.