



# Datalogic Memor K Mobile Handheld Computer User Guide

[Home](#) » [DATALOGIC](#) » Datalogic Memor K Mobile Handheld Computer User Guide 

## Contents

- 1 Datalogic Memor K Mobile Handheld Computer
- 2 Disclaimer
- 3 Reference Documentation
- 4 GENERAL VIEW
- 5 Open The Box
- 6 GETTING TO KNOW
- 7 Relacing Battery
- 8 Replacing Memory Card
- 9 Charging Terminal
- 10 Turning Power On/Off
- 11 Using The Scan/Image Engine Demo
- 12 Aiming Beam
- 13 GENERAL SAFETY RULES
- 14 CLEANING THE DEVICE
- 15 POWER SUPPLY
- 16 BATTERY INFORMATION
- 17 INFORMATIONS SUR LA BATTERIE
- 18 BATTERY SAFETY GUIDELINES
- 19 WIRELESS AND RADIO FREQUENCIES
- WARNINGS
- 20 LED CLASS
- 21 FCC COMPLIANCE
- 22 FCC RF Exposure Information and Statement:
- 23 ISED COMPLIANCE
- 24 Documents / Resources
  - 24.1 References
- 25 Related Posts

## Datalogic Memor K Mobile Handheld Computer



### **Datalogic Sr**

Via San Vitalino 13  
40012 Calderara di Reno (BO)  
Italy  
Tel.+39 051 3147011  
Fax +39 051 3147205

### **©2018-2020 Datalogic S.p.A. and/or its affiliates**

All rights reserved. Without limiting the rights under copyright, no part of this documentation may be reproduced, stored in or introduced into a retrieval system, or transmitted in any form or by any means, or for any purpose, without the express written permission of Datalogic S.p.A. and/or its affiliates. Owners of Datalogic products are hereby granted a non-exclusive, revocable license to reproduce and transmit this documentation for the purchasers own internal business purposes. Purchaser shall not remove or alter any proprietary notices, including copyright notices, contained in this documentation and shall ensure that all notices appear on any reproductions of the documentation. Should future revisions of this manual be published, you can acquire printed versions by contacting your Datalogic representative. Electronic versions may either be downloadable from the Datalogic website [www.datalogic.com](http://www.datalogic.com) or provided on appropriate media. If you visit our website and would like to make comments or suggestions about this or other Datalogic publications, please let us know via the "Contact Datalogic" page.

## Disclaimer

Datalogic has taken reasonable measures to provide information in this manual that is complete and accurate, however, Datalogic reserves the right to change any specification at any time without prior notice. Datalogic and the Datalogic logo are registered trademarks of Datalogic S.p.A. in many countries, including the U.S.A. and the E.U. Memor is trademark of Datalogic S.p.A. and/or its affiliates. All other brand and product names may be trademarks of their respective owners.

## Reference Documentation

For further information regarding Memor K refer to the SDK Help online and to the Memor Kyser's Manual, downloadable from our website [www.datalogic.com](http://www.datalogic.com)

## Support Through the Website

Datalogic provides several services as well as technical support through its website. Log on to [www.datalogic.com](http://www.datalogic.com) and click on the SUPPORT link which gives you access to: Downloads by selecting your product model from the dropdown list in the Search by Product field for specific Data Sheets, Manuals, Software & Utilities, and Drawings; Repair Program for On-Line Return Material Authorizations (RMAs) plus repair Center contact information; Customer Service containing details about Maintenance Agreements; Technical Support through email or phone.

## Warranty Terms and Conditions

The warranty period is 1 year for the device and 90 days for consumables (e.g. battery, power supply, cable etc.) from date of purchase at our company.

## GENERAL VIEW



## Open The Box

Please verify that your carton contains the following items:

- mobile computer (terminal)

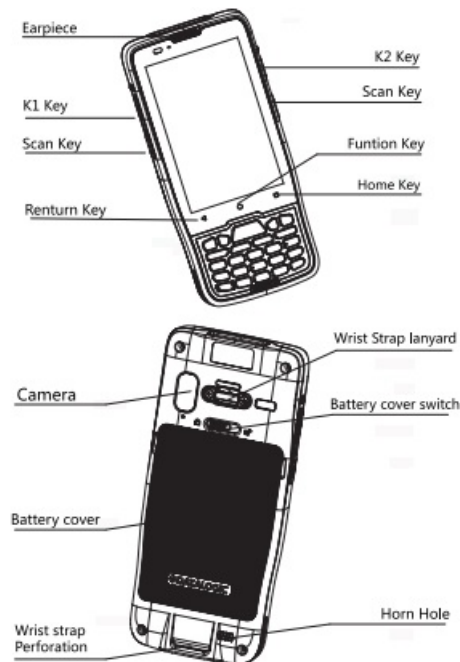
- Quick start guide
- USB Type-C cable
- Battery

if you ordered the accessories for your terminal, verify that they are also included with the order. Be sure to keep the original packaging in case you need to return the terminal for service.

### CAUTION

Keep the original packaging for use when sending products to the technical assistance center. Damage caused by improper packaging is not covered under the warranty.

## GETTING TO KNOW



## Relacing Battery

1. Turn off the terminal
2. Slide the lock in the direction shown



3. Open the battery cover from the position shown



4. Open the battery cover and take out the battery in the direction shown



## Replacing Memory Card

Terminal use the built-in storage ROM to store files and application data. The user can expand the storage capacity of the terminal by installing the memory card. Recommends the use of Single Level Cell (SLC) industrial-grade microSD or microSDHC memory cards with terminals for maximum performance and durability. Contact with the sales to select the qualified memory card.

**Note:** before memory card is installed, the MicroSD/SDHC card should be formatted in Fat32 format

### Replacing memory card:

1. Turn off the terminal.
2. As shown below, open and remove the microSD card cover



## Charging Terminal

Terminal is shipped with the battery which has significantly high discharged power (> 3800mAh). Charge the battery with a wall adapter for minimum 3.5 hours

### Note:

Using terminal while charging the battery will significantly increase the time required to reach a full charge.

### Warning:

We recommend use charging devices, its model is 94ACCO196 Use of any charger may damage, that is not covered by the warranty.

### Warning:

Ensure all components are dry, before mating terminals with peripheral devices Mating wet components may damage, that is not covered by the warranty.

## Turning Power On/Off

To turn the terminal on, press the Power button for about 3 seconds

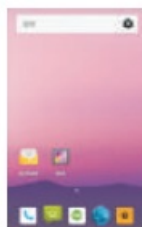
### Turning the terminal off:

1. To press the Power button for about 3 seconds until the options Reboot (restart option) menu displays.
2. Touch Power off.

Forcing restart When terminal doesn't work, or crash can press the power button About 10 seconds to force restart

## Using The Scan\Image Engine Demo

1. Touch scanner on desktop



2. Point the terminal at the bar code

**Note:** For optimum performance, avoid reflections by scanning the bar code to a slight angle.

3. Touch and hold Scan or press and hold the Scan button. Aimer beam should be located on the target bar code



**Note:** The left and right side buttons also trigger the scan/imager

4. The decode results display on the screen

## Aiming Beam

The aiming beam or pattern is smaller when the terminal is closer to the code and larger when it is farther from the code. Symbolologies with smaller bars or elements (mil size) should be read closer to the unit Symbolologies with larger bars or elements (mil size) should be read farther from the unit. Aiming at the beam diagram

Linear Bar Code



2D Matrix Symbol



## Trademarks

Datalogic and the Datalogic logo are registered trademarks of Datalogic S.p.A. in many countries, including the U.S.A. and the E.U. Memor is a trademark of Datalogic S.p.A. and/or its affiliates. All other trademarks and brands are property of their respective owners. Google, Google Play and other marks are trademarks of Google LLC.

## Patents

See [www.patents.datalogic.com](http://www.patents.datalogic.com) for patent list. This product is covered by one or more of the following patents: Utility patents: EP1825417B1, EP2517148B1, EP2649555B1, EP3016028B1, US6808114, US6997385, US7387246, US7721966, US8245926, US8561906, US8888003, US8915443, US9361503, US9798948, ZL200980163411.X, ZL201080071124.9.

## NOTE:

Read carefully the Memor K User Manual (available at [www.datalogic.com](http://www.datalogic.com)) before performing any type of connection to the Memor K. The user is responsible for any damage caused by incorrect use of the equipment or by inobservance of the indication supplied in the user manual.

## GENERAL SAFETY RULES

- Before using the devices and the battery packs, read this Addendum carefully.
- Use only the components and accessories supplied by the manufacturer for the specific Memor K being used.
- Do not attempt to disassemble the Memor K device, as it does not contain parts that can be repaired by the user. Any tampering will invalidate the warranty.
- When replacing the battery pack or at the end of the operative life of the Memor K device, disposal must be performed in compliance with the laws in force in your jurisdiction.
- Do not submerge the Memor K in liquid products.
- For further information or support, refer to the Datalogic website: [www.datalogic.com](http://www.datalogic.com).

## CLEANING THE DEVICE

Periodically clean the Memor K using a soft cloth slightly dampened with only water or Isopropyl Alcohol (70%). Do not use any other cleaning agents (e.g. different alcohol, abrasive or corrosive products, solvents) or abrasive pads to clean the device. Do not spray or pour liquids directly onto the device. The device is IP54 waterproof.

## POWER SUPPLY

The device is intended to be supplied by a self-contained rechargeable Lithium-Ion battery pack (UL listed LPS/SELV power source) and/or by UL Listed/CSA Certified Power Unit LPS/SELV power source which supplies power directly to the unit via the micro USB connector of the cable. The device could be also used with Certified Accessories (Dock/Cradle) which supply Wireless power. The Dock/Cradle accessories are intended to be supplied by a UL Listed/CSA Certified Power Unit LPS/SELV rating 12V, min 5A power source which supplies power via the power connector of the cable. Any changes or modifications to equipment, not expressly approved by Datalogic could void the user's authority to operate the equipment.

## BATTERY INFORMATION

A battery subjected to extremely low air pressure that may result in an explosion or the leakage of flammable liquid or gas. By default, the main battery pack is disconnected at the factory to avoid damage due to excessive draining. Rechargeable battery pack is less than half of full charge when delivered. Charge the battery pack as indicated in the Quick Start Guide or in the User Manual, before using the Memor K terminal. The battery pack autonomy varies according to many factors, such as the frequency of barcode scanning, RF usage, battery life, storage, environmental conditions, etc. Close to the limits of the working temperature, some battery performance degradation may occur. The Memor K should be charged at an ambient temperature between 0 – 35° C (32 to 122°F) to achieve the maximum charging rate. Never charge the device battery in a closed space where excessive heat can build up. As a safety precaution, the battery may stop charging to avoid overheating. The Memor K gets warm during charging; this is normal and does not mean a malfunction. Even if the storage temperature range is wider, it is recommended to store the terminal and the batteries at environmental

temperature, in order to achieve the longest battery life.

**CAUTION:**

Avoid storing batteries for long periods in a state of full charge or very low charge. We recommend charging the battery pack every two to three months to keep its charge at a moderate level to maximize battery life. Annual replacement of rechargeable battery pack avoids possible risks or abnormalities and ensures maximum performance.

**WARNING:**

Use only Datalogic approved batteries and accessories for battery charging. Risk of explosion if battery is replaced by an incorrect type. Dispose of used batteries according to the instructions. Il y a risque d'explosion si la batterie est remplacée par une batterie de type incorrect. Mettre au rebut les batteries usagées conformément aux instructions.

## **INFORMATIONS SUR LA BATTERIE**

Une batterie soumise à une pression d'air extrêmement faible pouvant entraîner une explosion ou une fuite de liquide ou de gaz inflammable.

## **BATTERY SAFETY GUIDELINES**

**WARNING:**

Installing, charging and/or any other action should be done by authorized personnel and following this manual. The battery pack may get hot, explode, ignite, and/or cause serious injury if exposed to abusive conditions. If the battery pack is replaced with an improper type, there is risk of explosion. Do not place the battery pack in or near a fire or other heat source; do not place the battery pack in direct sunlight, or use or store the battery pack inside unventilated areas in hot weather; do not place the battery pack in microwave ovens, in clothes dryers, in high-pressure containers, on induction cook surfaces or similar devices. Doing so may cause the battery pack to generate heat, explode or ignite. Using the battery pack in this manner may also result in a loss of performance and a shortened life expectancy. To power the cradle, use only a Datalogic-approved power supply. The use of an alternative power supply will void the product warranty, may cause product damage and may cause heat, an explosion, or fire. The area in which the units are charged should be clear of debris and combustible materials or chemicals. Do not use the battery pack of this terminal to power devices other than this device. Immediately discontinue use of the battery pack if, while using, charging or storing the battery pack, the battery pack emits an unusual smell, feels hot, changes colour or shape, or appears abnormal in any other way. Do not short-circuit the battery pack contacts connecting the positive terminal and negative terminal. This might happen, for example, when you carry a spare battery pack in your pocket or purse; accidental short-circuiting can occur when a metallic object such as a coin, clip, or pen causes direct connection of the contacts of the battery pack (these look like metal strips on the battery pack). Short-circuiting the terminals may damage the battery pack or the connecting object. Do not apply voltages to the battery pack contacts.

**WARNING:**

Do not pierce the battery pack with nails, strike it with a hammer, step on it or otherwise subject it to strong impacts, pressures, or shocks. AVERTISSEMENT: Ne percez pas la batterie avec des clous, ne la frappez pas avec un marteau, ne marchez sinon, soumettez-le à de forts impacts, pressions ou chocs.

**WARNING:**

Do not disassemble or modify (i.e. bend, crush or deform) the battery pack. The battery pack contains safety and protection devices, which, if damaged, may cause the battery pack to generate heat, explode or ignite.

**WARNING:**

In case of leakage of liquid from the battery, avoid contact with liquid on the skin or eyes. If the contact occurs, immediately wash the affected area with water and consult a doctor. Do not solder directly onto the battery pack. Do not expose the battery pack to liquids. Avoid any knocks or excessive vibrations.



**WARNING:**

If the device or the battery is dropped, especially on a hard surface, you should take it to the nearest Authorised Repair Centre for inspection before continuing to use it. If your device stops working for any reason, do not use its battery on other electronic devices without a prior check and approval by an Authorised Repair Centre. Do not remove or damage the battery pack's label. Do not use the battery pack if it is damaged in any part. Battery pack usage by children should be supervised. Collect and recycle waste batteries separately from the device in compliance with European Directive 2006/66/EC, 2011/65, 2002/96/EC and subsequent modifications, with US and China regulatory laws and regulations about the environment.

**WIRELESS AND RADIO FREQUENCIES WARNINGS**

**WARNING:** Use only the supplied or an approved replacement antenna. Unauthorized antennas, modifications or attachments could damage the product and may violate laws and regulations. Most modern electronic equipment is shielded from RF signals. However, certain electronic equipment may not be shielded against the RF signals generated by Memor K. Datalogic recommends persons with pacemakers or other medical devices to follow the same recommendations provided by Health Industry Manufacturers Associations for mobile phones.

**Persons with pacemakers:**

- Should ALWAYS keep this device more than twenty-five (25) cm from their pacemaker and/or any other medical device;
- Should not carry this device in a breast pocket;
- Should keep the device at the opposite side of the pacemaker and/or any other medical device;
- Should turn this device OFF or move it immediately AWAY if there is any reason to suspect that interference is taking place.
- Should ALWAYS read pacemaker or any other medical device guides or should consult the manufacturer of the medical device to determine if it is adequately shielded from external RF energy.

In case of doubt concerning the use of wireless devices with an implanted medical device, contact your doctor. Turn this device OFF in health care facilities when any regulations posted in these areas instruct you to do so. Hospitals or health care facilities may use equipment that could be sensitive to external RF energy. RF signals may affect improperly installed or inadequately shielded electronic systems in motor vehicles. Check with the manufacturer or its representative regarding your vehicle. You should also consult the manufacturer of any equipment that has been added to your vehicle. An airbag inflates with great force. DO NOT place objects, including either installed or portable wireless equipment, in the area over the airbag or in the airbag deployment area. If a vehicle's wireless equipment is improperly installed and the airbag inflates, serious injury could result. Turn off the device when in any area with a potentially explosive atmosphere. Observe restrictions and follow closely any laws, regulations, warnings and best practices on the use of radio equipment near fuel storage areas or fuel distribution areas, chemical plants or where any operation involves use of explosive materials.

**LED CLASS**

LED illuminator integrated in the imager engine is classified as "EXEMPT RISK GROUP" according to IEC62471.

**FCC COMPLIANCE****Notice:**

This device complies with Part 15 of the FCC Rules. Operation is subject to the following two conditions:

1. This device may not cause harmful interference.
2. This device must accept any interference received, including interference that may cause undesired operation.

**Note:**

Changes or modifications not expressly approved by the party responsible for compliance could void the user's authority to operate the equipment.

**Note:**

This equipment has been tested and found to comply with the limits for a Class B digital device, pursuant to Part 15 of the FCC Rules. These limits are designed to provide reasonable protection against harmful interference in a residential installation. This equipment generates uses and can radiate radio frequency energy and, if not installed and used in accordance with the instructions, may cause harmful interference to radio communications. However, there is no guarantee that interference will not occur in a particular installation. If this equipment does cause harmful interference to radio or television reception, which can be determined by turning the equipment off and on, the user is encouraged to try to correct the interference by one or more of the following measures:

- Reorient or relocate the receiving antenna.
- Increase the separation between the equipment and receiver.
- Connect the equipment into an outlet on a circuit different from that to which the receiver is connected.
- Consult the dealer or an experienced radio/TV technician for help.

**FCC RF Exposure Information and Statement:**

The SAR limit of USA (FCC) is 1.6 W/kg averaged over one gram of tissue. Device types: U4GMEMKUS has also been tested against this SAR limit. The highest SAR value reported under this standard during product certification for use at the ear is 0.870W/kg and when properly worn on the body is 0.975W/kg, warn on limb is 0.988W/kg . This device was tested for typical body-worn with operations the back of the handset kept 1cm from the body. To maintain compliance with FCC RF exposure requirements, use accessories that maintain a 1cm separation distance between the user's body and the back of the handset. The use of belt clips, holsters and similar accessories should not contain metallic components in its assembly. The use of accessories that do not satisfy these requirements may not comply with FCC RF exposure requirements and should be avoided. The device for operation in the band 5150-5250 MHz is only for indoor use to reduce the potential for harmful interference to cochannel mobile satellite systems.

**FCC RF Exposure Information and Statement:**

The SAR limit of USA (FCC) is 1.6 W/kg averaged over one gram of tissue. Device types: U4GMEMKUS has also been tested against this SAR limit. The highest SAR value reported under this standard during product certification for use at the ear is 0.870W/kg and when properly worn on the body is 0.975W/kg, warn on limb is 0.988W/kg . This device was tested for typical body-worn with operations the back of the handset kept 1cm from the body. To maintain compliance with FCC RF exposure requirements, use accessories that maintain a 1cm separation distance between the user's body and the back of the handset. The use of belt clips, holsters and similar accessories should not contain metallic components in its assembly. The use of accessories that do not satisfy these requirements may not comply with FCC RF exposure requirements and should be avoided. The device for operation in the band 5150-5250 MHz is only for indoor use to reduce the potential for harmful interference to cochannel mobile satellite systems.

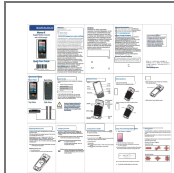
**ISED COMPLIANCE**

**Notice:**

This device complies with Industry Canada licence-exempt RSS standard(s). Operation is subject to the following two conditions:

1. this device may not cause harmful interference, and
2. this device must accept any interference received, including interference that may cause undesired operation.

## Documents / Resources



[Datalogic Memor K Mobile Handheld Computer](#) [pdf] User Guide  
MEMKUS, U4GMEMKUS, Memor K, Mobile Handheld Computer, Handheld Computer, Computer

## References

- [Datalogic | Automatic Data Capture and Process Automation - Datalogic](#)
- [Datalogic | Automatic Data Capture and Process Automation - Datalogic](#)
- [Patents - Datalogic](#)

[Manuals+](#).