

**dataflex**  
**28.513 Power**  
**Powerbar**



## dataflex 28.513 Power Powerbar Installation Guide

[Home](#) » [dataflex](#) » dataflex 28.513 Power Powerbar Installation Guide 

### Contents

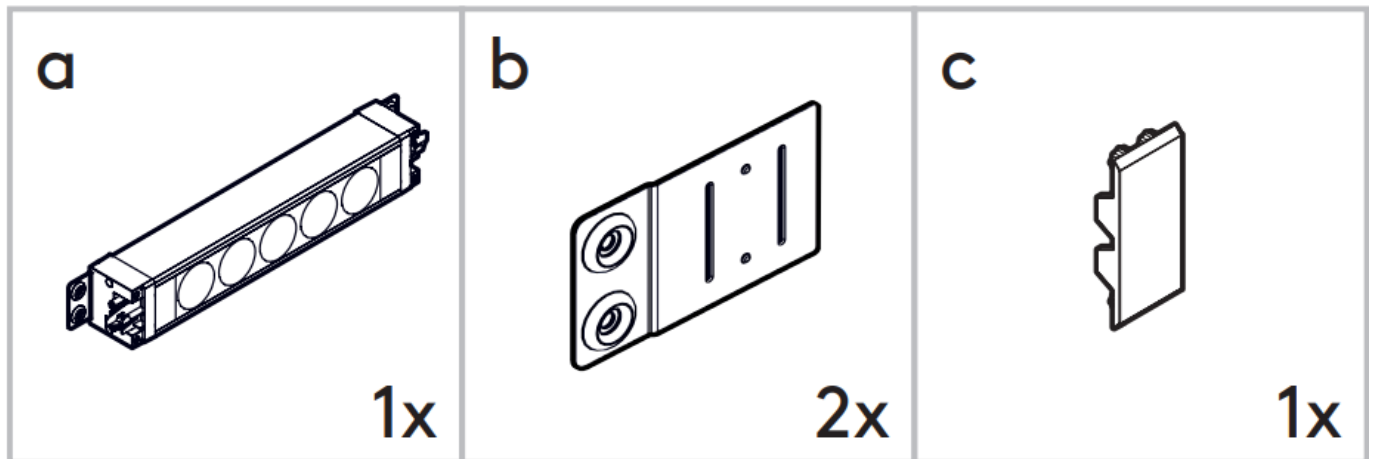
- [1 dataflex 28.513 Power Powerbar](#)
- [2 Parts](#)
- [3 INSTALLATION INSTRUCTION](#)
- [4 Product Information](#)
- [5 Specifications](#)
- [6 Product Usage Instructions](#)
- [7 Assembly](#)
- [8 Maintenance](#)
- [9 FAQs](#)
- [10 Documents / Resources](#)
  - [10.1 References](#)

**dataflex**

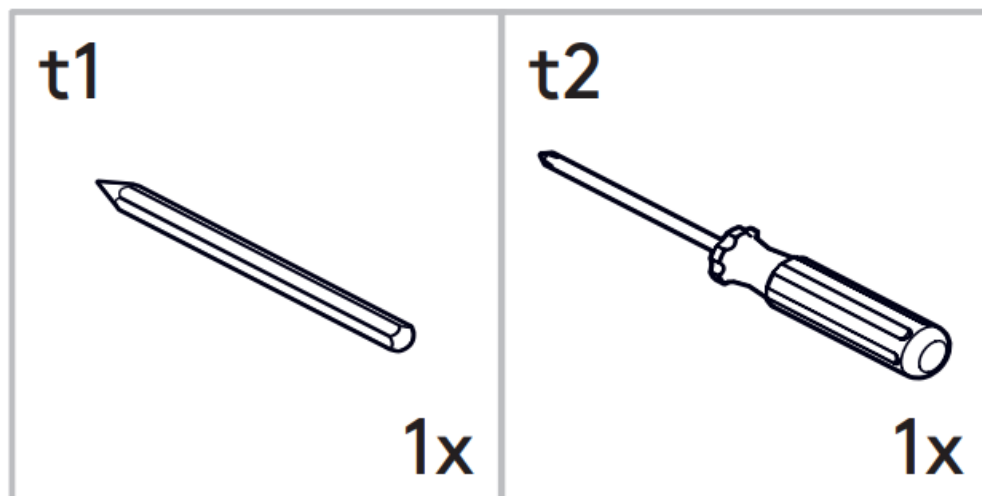
**dataflex 28.513 Power Powerbar**



## Parts

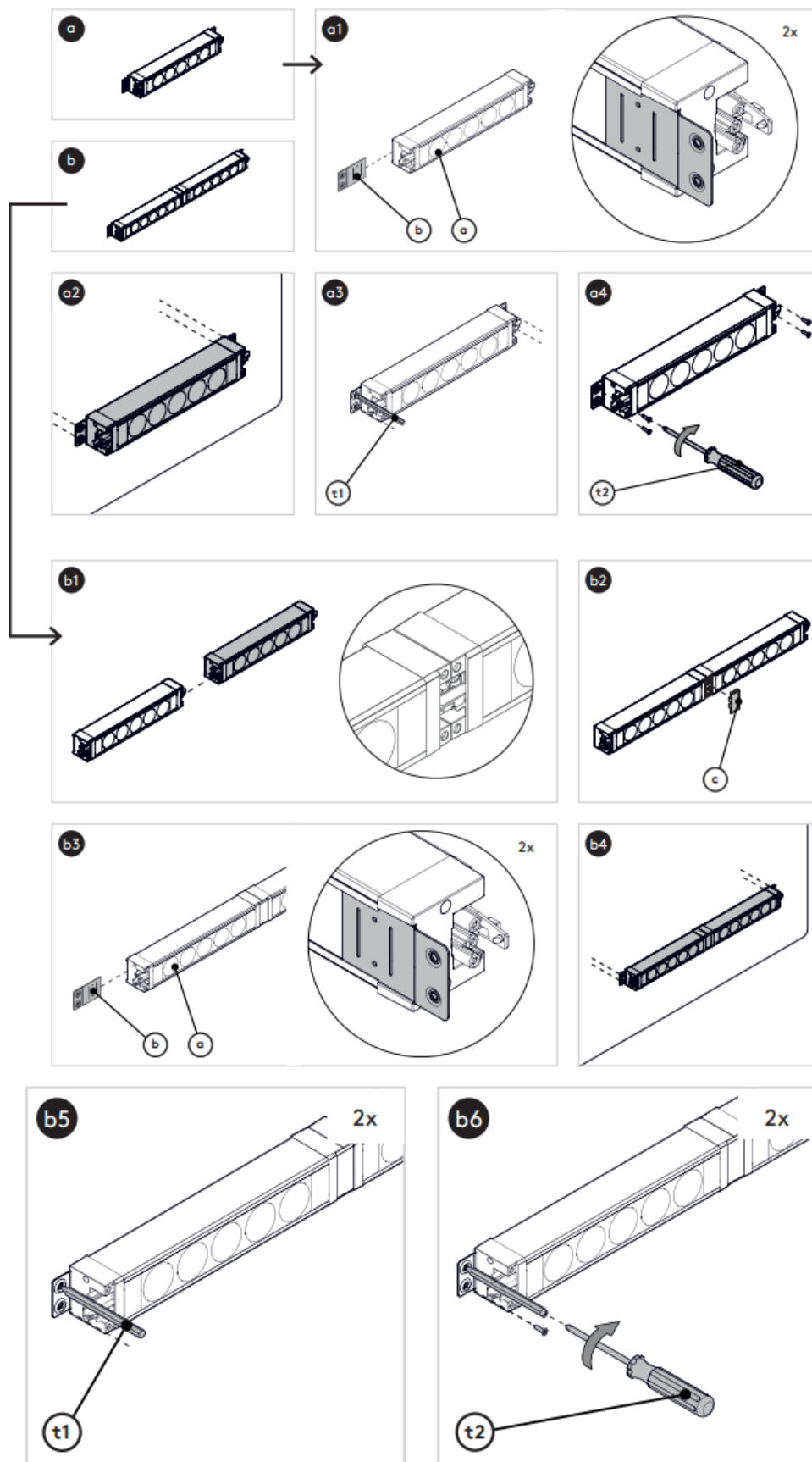


## Required tools



- [www.dataflex-int.com](http://www.dataflex-int.com)

## INSTALLATION INSTRUCTION



## Product Information

This product is a French-Belgian-style item manufactured by Dataflex International. It consists of various components labelled as a, b, and c, along with different quantities of each component.

## Specifications

- **Model Number:** 28.513
- **Contact:** T +31 180 515444,
- **Email:** [info@dataflex-int.com](mailto:info@dataflex-int.com)
- **Website:** [www.dataflex-int.com](http://www.dataflex-int.com)

## Product Usage Instructions

### Component Identification:

The product includes components labelled as a, b, and c. Each component may have sub-components denoted by numbers or letters.

### Assembly

1. Identify all components and sub-components according to the provided manual.
2. Follow the step-by-step instructions for assembling each component in the correct order.
3. Ensure all parts fit securely to avoid any loose connections.

**Usage:** Once assembled, the product can be used according to its intended purpose. Follow any additional usage guidelines provided in the manual.

### Maintenance

Regularly check for loose parts and tighten them if necessary. Keep the product clean and free from dust or debris that may affect its performance.

## FAQS

### Q: What should I do if a component is missing?

A: Contact Dataflex International's customer support with your order details to request the missing component.

### Q: Can I disassemble the product for storage?

A: Yes, you can disassemble the product following the reverse of the assembly instructions. Ensure to keep all parts organized for reassembly.

### Q: How do I clean the product?

A: Use a soft, damp cloth to wipe down the product. Avoid using harsh chemicals that may damage the materials.

## Documents / Resources

	<p><a href="#">dataflex 28.513 Power Powerbar</a> [pdf] Installation Guide 28.513, 28.513 Power Powerbar, 28.513, Power Powerbar, Powerbar</p>
---	--

## References

- [🏠 Home - INT](#)
- [User Manual](#)

[Manuals+](#), [Privacy Policy](#)

This website is an independent publication and is neither affiliated with nor endorsed by any of the trademark owners. The "Bluetooth®" word mark and logos are registered trademarks owned by Bluetooth SIG, Inc. The "Wi-Fi®" word mark and logos are registered trademarks owned by the Wi-Fi Alliance. Any use of these marks on this website does not imply any affiliation with or endorsement.