



datacolor SCK310 Spyder Checkr Photo Color Chart User Guide

[Home](#) » [datacolor](#) » datacolor SCK310 Spyder Checkr Photo Color Chart User Guide 

Contents

- [1 datacolor SCK310 Spyder Checkr Photo Color Chart](#)
- [2 Product Usage Instructions](#)
- [3 QUICK START GUIDE](#)
- [4 Instructions](#)
- [5 Documents / Resources](#)
 - [5.1 References](#)
- [6 Related Posts](#)

datacolor

datacolor SCK310 Spyder Checkr Photo Color Chart



Spyder Checkr

The Spyder Checkr is a color calibration tool designed to help photographers achieve accurate color reproduction in their images.

Product Usage Instructions

1. Take at least one photo in RAW format including the Spyder Checkr. It can be held or placed in the frame. It is important that the target be lit evenly, ideally from each side at 45 degree angles.
2. Install the Spyder Checkr software from the [Datacolor download page](#). After the installation is complete, launch the Spyder Checkr software to begin the activation and registration process. This will automatically start your Warranty. Use the Serial Number included in your Spyder Checkr package to activate your software.
3. It is recommended to have your histogram visible during editing for reference.
4. Straighten, fix distortion, and crop the target image to the black target edge.
5. White balance the image.
6. Adjust the whitest patch to an RGB value that averages RGB 230 or 90%.
7. Adjust the blackest patch to an RGB value that averages RGB 10 or 5%.

For further support or assistance, please visit the [Datacolor Support page](#).

QUICK START GUIDE



What You Get (SCK100/SCK200/SCK300/SCK310)

- Spyder Checkr Target Color Cards
- Spyder Checkr Case/Sleeve
- Serial Number
- Download instructions

System Requirements

- Windows 7 32/64, Windows 8.0, 8.1 32/64, 10 32/64
- Mac OS X 10.7 or higher
- Monitor Resolution 1280×768 or greater, 16-bit video card (24 recommended), 1GB of available RAM, 500MB of available hard disk space.
- Internet connection for software download

Support

support.datacolor.com

Instructions

• Step 1 Take Photos

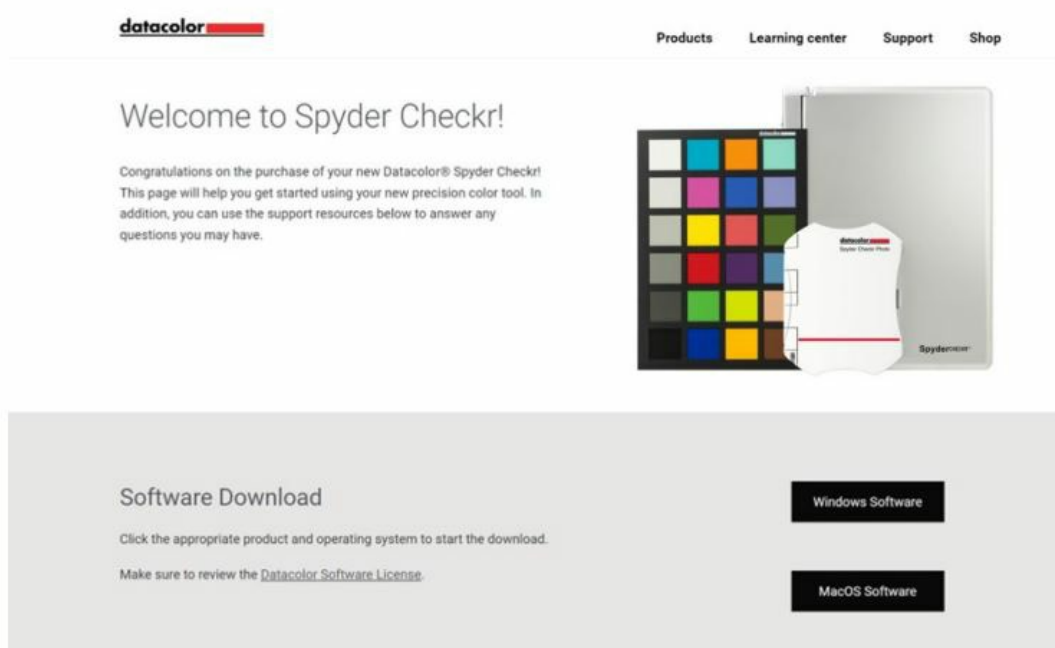
Take at least one photo in RAW format including the Spyder Checkr. It can be held or placed in the frame. It is important that the target be lit evenly, ideally from each side at 45 degree angles.





- **Step 2 Install and Activate Spyder Checkr Software**

Install the Spyder Checkr software from the Datacolor download page. After the installation is complete, launch the Spyder Checkr software to begin the activation and registration process. This will automatically start your Warranty. Use the Serial Number included in your Spyder Checkr package to activate your software.



- **Step 3 Adjust in Editing Software**

Upload the image file onto your computer and open it in your RAW conversion software, such as Adobe Lightroom, Adobe Photoshop, or Hasselblad Phocus. Straighten, fix distortion, and crop the target image. It is recommended to have your histogram visible during editing for reference

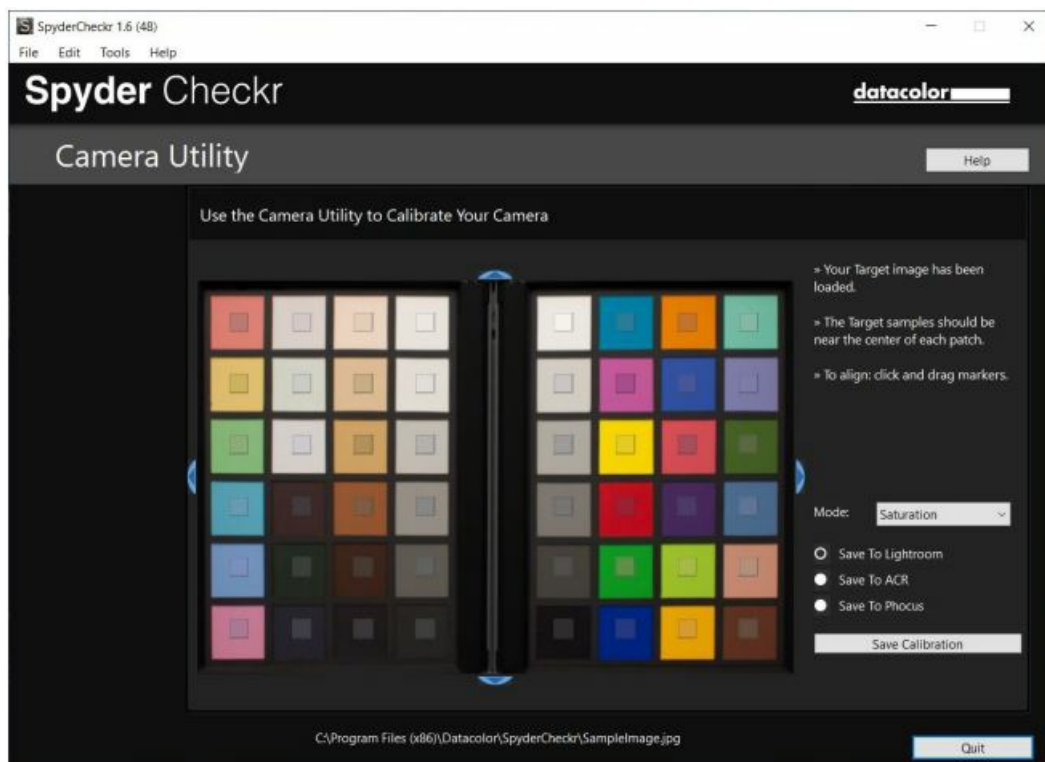
1. Straighten, fix distortion, and crop the target image to the black target edge.
2. White balance the image.
3. Adjust the whitest patch to an RGB value that averages RGB 230 or 90%.
4. Adjust the blackest patch to an RGB value that averages RGB 10 or 5%.



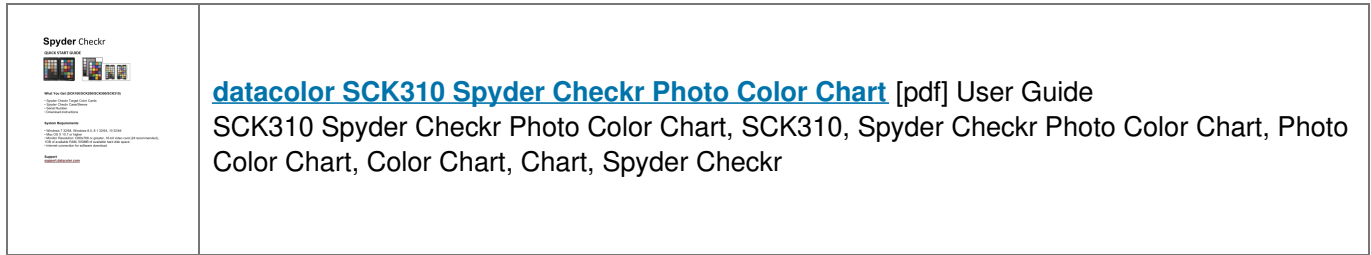
• Step 4 Save and Apply Preset

Launch the Spyder Checkr software and open the target image. Adjust the patch indicators as needed until the patch grid aligns as close to the center of each patch of the Spyder Checkr image as possible.

- Select your preferred color mode and the application you want to export to, then click “Save Calibration”.
- Type the file name you want to assign to the preset created.
- It is suggested to use a naming system that includes the camera model, lens, calibration mode, and Spyder Checkr chart.
- For example, if you calibrate a Nikon D810 with an 85mm lens for Portrait Mode with the Spyder Checkr 24, a file name such as “D810_85_portrait_24” would be optimal.)
- Launch your editing software, adjust the white balance with the other side of the Spyder Checker, a Spyder Cube, or another gray reference, and apply the preset you have made to all photos taken for the camera and lens combination.



Datacolor and Spyder are trademarks or registered trademarks of Datacolor. © Copyright 2023 Datacolor. All rights reserved.



- [!\[\]\(27c3f183a8911a7dac26d53c513f13df_img.jpg\) Welcome to Spyder Checkr - Datacolor Spyder](#)

- [!\[\]\(5ba1bc70d78f05c00988641e5e513c62_img.jpg\) Welcome to Spyder Checkr - Datacolor Spyder](#)

Manuals+,