



# datacolor S4SR100 Spyder Print Profiling Tool User Guide

[Home](#) » [datacolor](#) » datacolor S4SR100 Spyder Print Profiling Tool User Guide 

## Contents

- [1 datacolor S4SR100 Spyder Print Profiling Tool](#)
- [2 QUICK START GUIDE](#)
- [3 Documents / Resources](#)
- [4 Related Posts](#)

# datacolor

## datacolor S4SR100 Spyder Print Profiling Tool



## QUICK START GUIDE

### What You Get

- Spyder Print spectrophotometer
- Sensor Base
- Spyder Guide
- USB cord
- Welcome Card with download instructions and serial number

## System Requirements

- USB port
- Windows 7 32/64, Windows 8.0, 8.1 32/64, 10 32/64
- Mac OS X 10.7 or higher
- Monitor Resolution 1280×768 or greater, 16-bit video card (24 recommended), 1GB of available RAM, 500MB of available hard disk space
- Internet connection for software download

## Support

[support.datacolor.com](http://support.datacolor.com)



### • Step 1 – Install and Activate

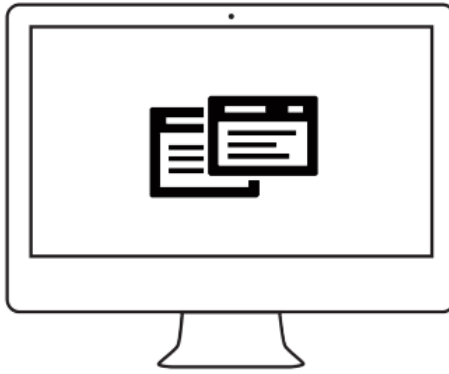
Install the Spyder Print software from the Datacolor Website. After the installation is complete, plug in your Spyder Print and launch the software to begin the activation and registration process. This will automatically start your warranty. Use the Serial Number on your welcome card to activate your software.



### • Step 2 – Printer Settings

Change the settings for the printer you want to profile to:

- Landscape orientation
- 0.25 in (.635 cm) margins
- Single sided
- Turn off any color management.



- **Step 3 – Print Target**

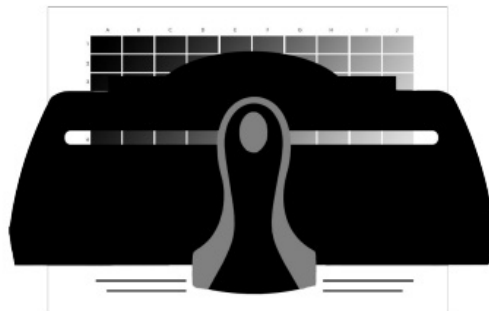
Follow the on-screen instructions to specify the printer, paper type, and select the target to be printed.



It is recommended to wait 15-30 minutes for the ink to dry before moving further.

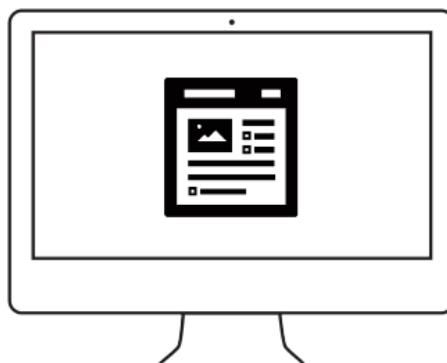
- **Step 4 – Calibrate and Measure**

Continue to follow the on-screen instructions to calibrate the Spyder Print. Then begin to measure the printed target.




- **Step 5 – Apply Printer Profile**

After the profile has been created, evaluated, and saved, remember to select this profile in the printer dialog box of the application you are using to apply it to your prints.



Documents / Resources

	<p><a href="#">datacolor S4SR100 Spyder Print Profiling Tool</a> [pdf] User Guide</p> <p>S4SR100, Spyder Print Profiling Tool, S4SR100 Spyder Print Profiling Tool, Print Profiling Tool, Profiling Tool</p>
---	--

[Manuals+](#)