



# datacolor Match Pigment Smart Color Matching Solution Installation Guide

[Home](#) » [datacolor](#) » datacolor Match Pigment Smart Color Matching Solution Installation Guide 

## Contents

- [1 datacolor Match Pigment Smart Color Matching Solution](#)
- [2 Introduction](#)
- [3 System Requirements](#)
- [4 New Installation vs. Upgrade](#)
- [5 Overview](#)
- [6 Installation Procedure](#)
- [7 Documents / Resources](#)
- [8 Related Posts](#)

# datacolor

datacolor Match Pigment Smart Color Matching Solution



## **Datacolor MATCHPIGMENT™ Stand-Alone Installation Guide**

All efforts have been made to ensure the accuracy of the information presented in this format. However, should any errors be detected, Datacolor appreciates your efforts to notify us of these oversights. Changes are periodically made to this information and are incorporated into forthcoming versions. Datacolor reserves the right to make improvements and/or changes in the product(s) and/or program(s) described in this material at any time. © 2017 Datacolor. Datacolor, SPECTRUM and other Datacolor product trademarks are the property of Datacolor. Microsoft and Windows are either registered trademarks of Microsoft Corporation in the United States and/or other countries. To obtain information on local agents, contact either of the offices listed below, or visit our website at [www.datacolor.com](http://www.datacolor.com).

### **Support Questions?**

If you need help with a Datacolor product, please contact one of our top-rated technical support teams located around the world for your convenience. You can find contact information below for the Datacolor office in your area.

## **Introduction**

This document will provide information on how to install Datacolor Match Pigment on a new system or as an upgrade for an existing installation.

**This document is for stand-alone computer systems.**

The installation procedure includes the following steps:

- **Installation of Datacolor MATCHPIGMENT**

The Datacolor Match Pigment program must be installed after installing Sybase.

- **Software License Validation**

Datacolor Match Pigment will run in a demo mode for 14 days. You will need to validate your software license during the demo period.

## **System Requirements**

The system requirements shown below are the recommended configuration to ensure effective operation of the Datacolor MATCHPIGMENT software in a stand-alone configuration.

### **Recommended hardware configuration**

### **Notes**

1. Minimum system configurations may limit performance, data capacity and operation of some features. Faster processor, more memory and faster hard drives will significantly enhance performance.
2. Accurate on-screen color display requires monitor calibration and true-color video mode.
3. Datacolor spectrophotometers use either an RS-232 Serial or USB connectors. Datacolor Spyder requires a universal serial bus (USB) connection. Printer port requirements (Parallel or USB...) depend on the selected printer.

Please contact Datacolor for Terminal Server hardware and software requirements.

### **Terminal Server Configurations**

For information on installing Datacolor Match Pigment on a terminal server, please see the Installation Instructions for Sybase Installation Guide.

## **New Installation vs. Upgrade**

When preparing to upgrade your system, we strongly recommend the following:

- Restart the system before you begin the upgrade. This is especially important if you are running a previous release of Datacolor MATCHPIGMENT . This is done to clear the memory of any modules that might interfere with the program upgrade.
- Backup your database. This can be accomplished through the MatchPigment menu by clicking Database, and then Backup Database. Follow the prompts.
- Store the data on the Datacolor TOOLS desktop before you begin the upgrade. See also Datacolor TOOLS User Guide, Appendix for a list of all files that should be backed up prior to performing an upgrade.

### **Firewall Blocking Messages**

If you have enabled a firewall on the system, you may see a Windows Security dialog box on several occasions during the installation. You must click Unblock to continue the installation.

### **Adobe Reader Installation**

To view and print any Datacolor User Guide or PDF document, you must have installed Adobe Reader. To install Adobe Reader, click on the Install Adobe Reader button on the installation menu.

### **Viewing Datacolor MATCHPIGMENT User's Guide**

Once Adobe Reader is installed, you can view the Datacolor MATCHPIGMENT User's Guide. It is located on the program USB in the DMP\Documentation directory, and is in a PDF file format (Datacolor MATCHPIGMENT User Guide.PDF)

## **Overview**

The Datacolor MATCHPIGMENT product includes both Datacolor MATCHPIGMENT and Datacolor TOOLS. These are two separate programs contained on separate USB's. Please follow these instructions, to insure the successful installation of Datacolor MATCHPIGMENT.

### **NOTE**

If Sybase V12 is not installed on the system you cannot complete the installation of Datacolor MATCHPIGMENT.

Before You Begin

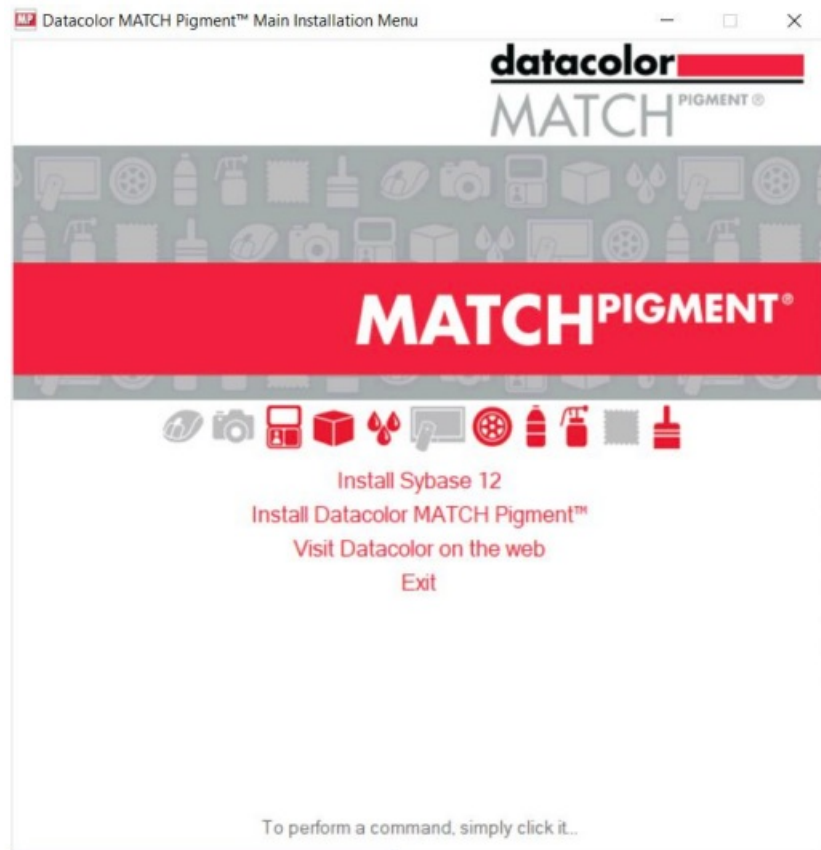
- Microsoft Windows® should be properly installed on your computer.
- You must have Windows Administrator rights to install this software.
- Restart the system before installing the software. This removes any memory-resident modules that may interfere with the installation, and is especially important if you have been running a previous version of Datacolor MATCHPIGMENT.
- Install Sybase V12 database management software.
- Close all other programs that are running.
- Have all program installations readily available.
- Install Datacolor MATCHPIGMENT before installing Datacolor TOOLS.

## **Installation Procedure**

To install Datacolor MATCHPIGMENT:

1. Place the Datacolor MATCHPIGMENT USB into the port.
2. Select the Menu.exe

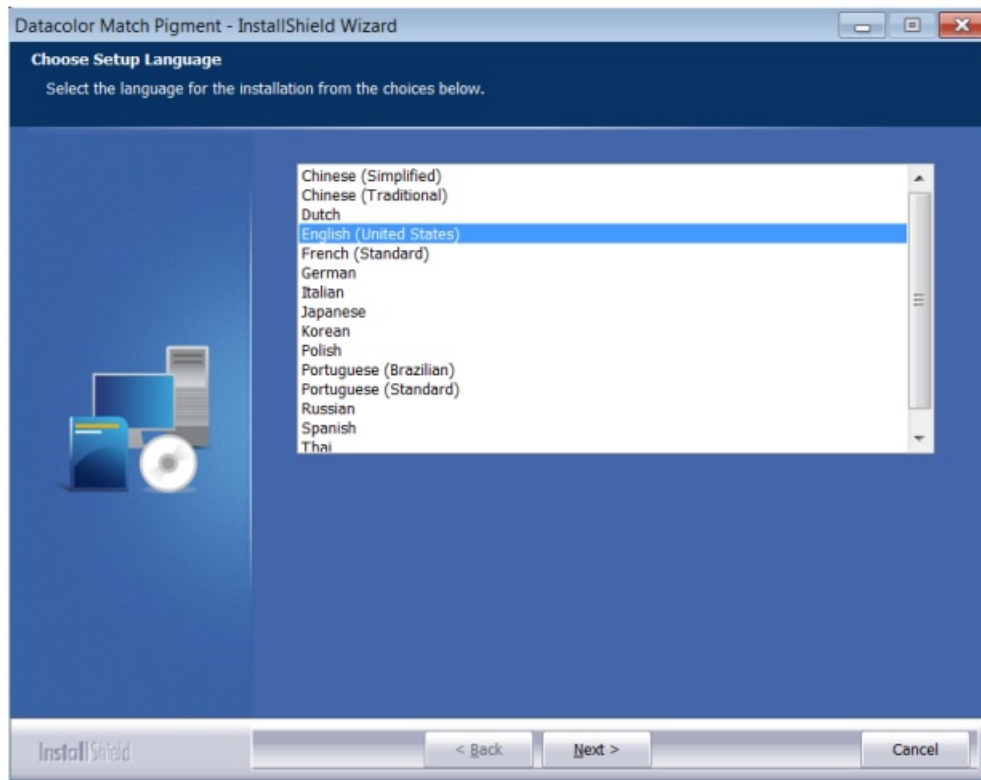
The Main Installation menu should appear automatically:



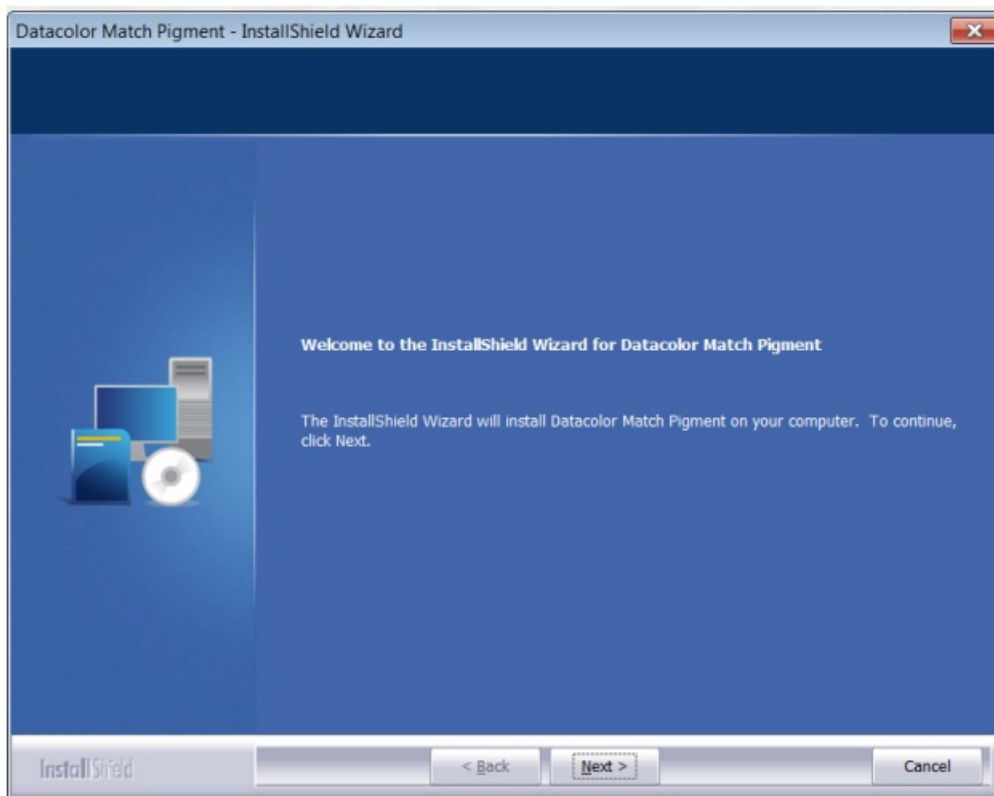
3. Click on Install Datacolor MATCHPIGMENT.
4. From the MATCH Pigment Installation Menu select Install Datacolor MATCHPIGMENT.



5. The Datacolor MATCHPIGMENT installation will prompt you to select a language:

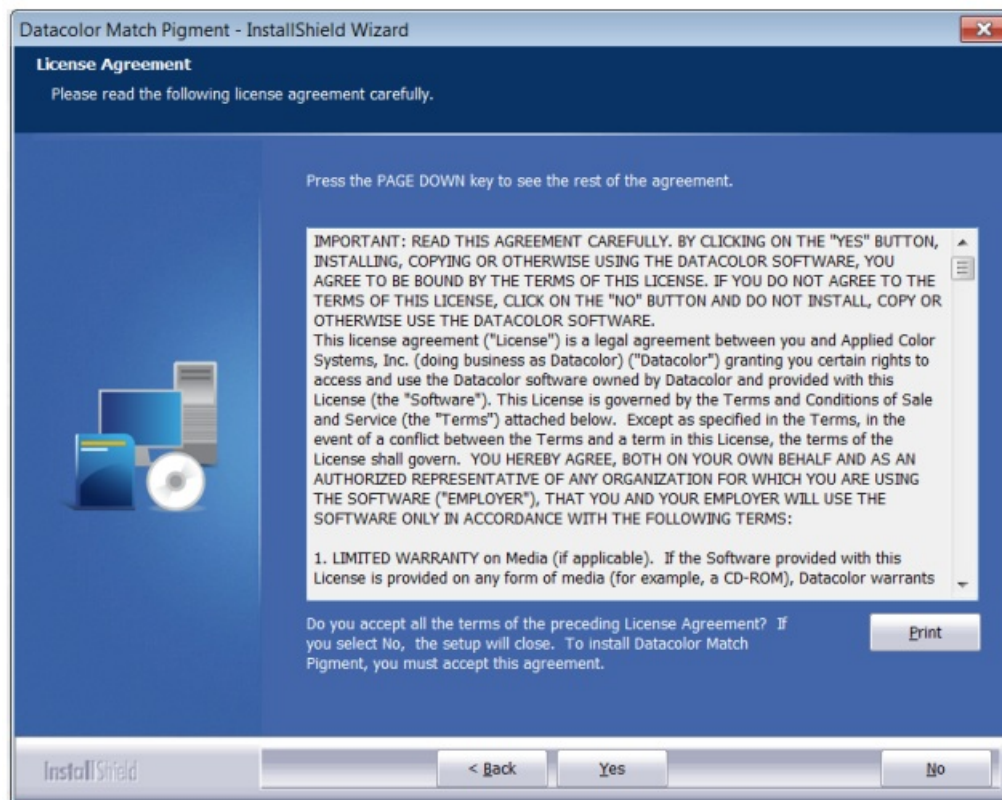


6. Select the appropriate language, and click Next. The Installation will begin and then the Installation Wizard will display:



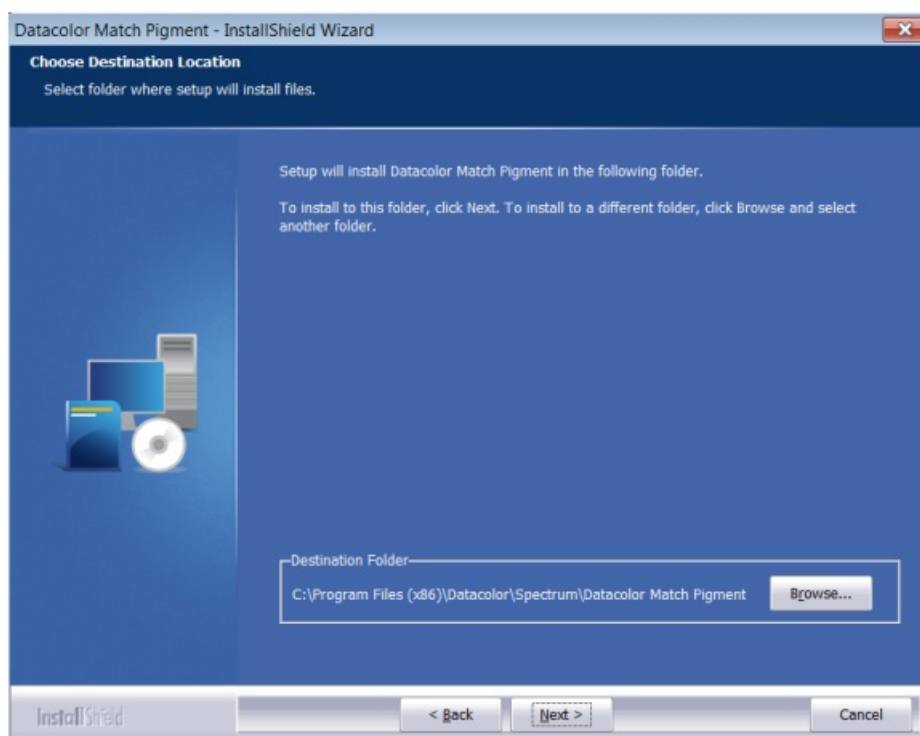
Click Next to continue

7. A software license agreement is displayed:



8. To continue with the installation, you must accept the agreement by clicking Yes.

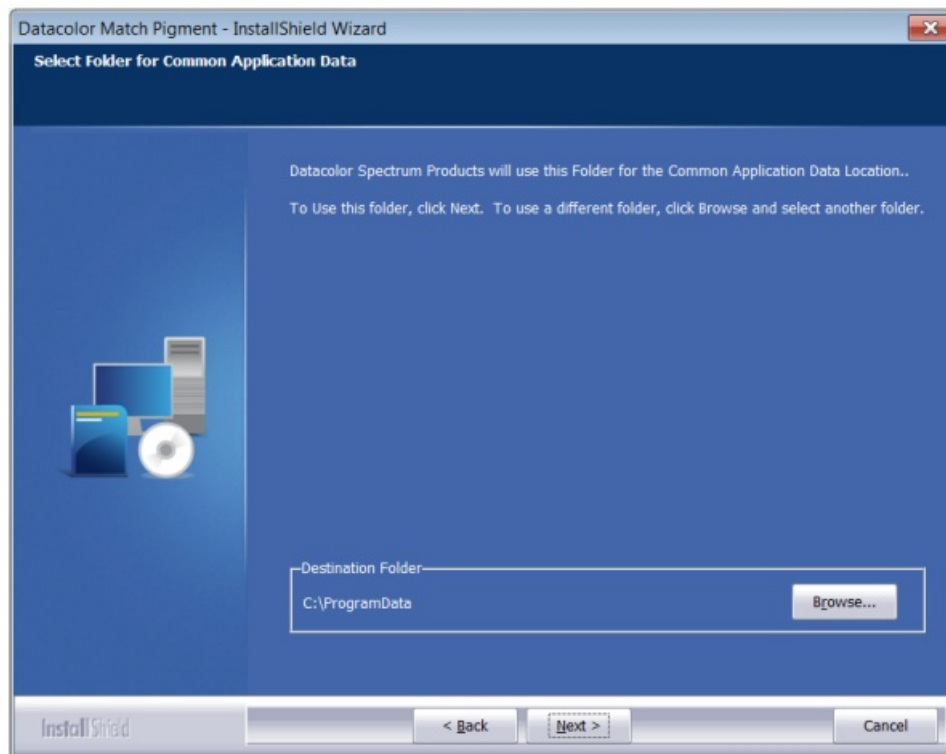
9. The program confirms the folder location for Datacolor MATCHPIGMENT:



- To select a different location for programs, click Browse.
- To accept the default, click Next.

10. The installation confirms the location for the Common Applications Data location. The locations vary depending on whether you are using Microsoft Windows XP, or Microsoft Vista:





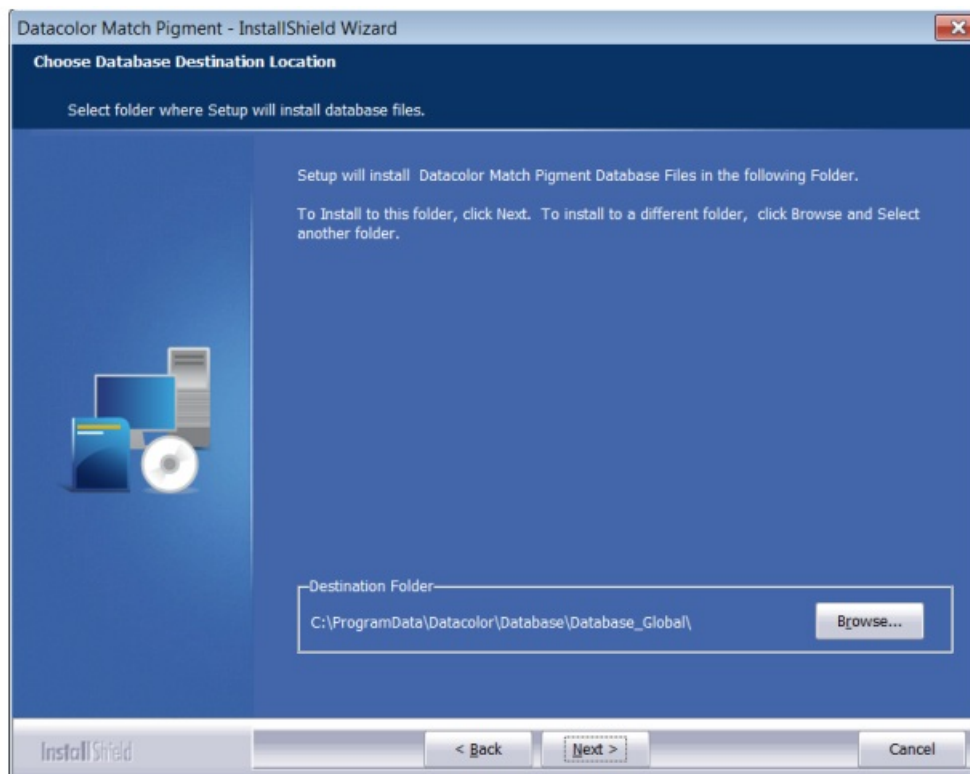
The common applications location is: C:\ProgramData.

You should accept the default locations unless otherwise directed by Datacolor applications.

Click Next to accept the default locations.

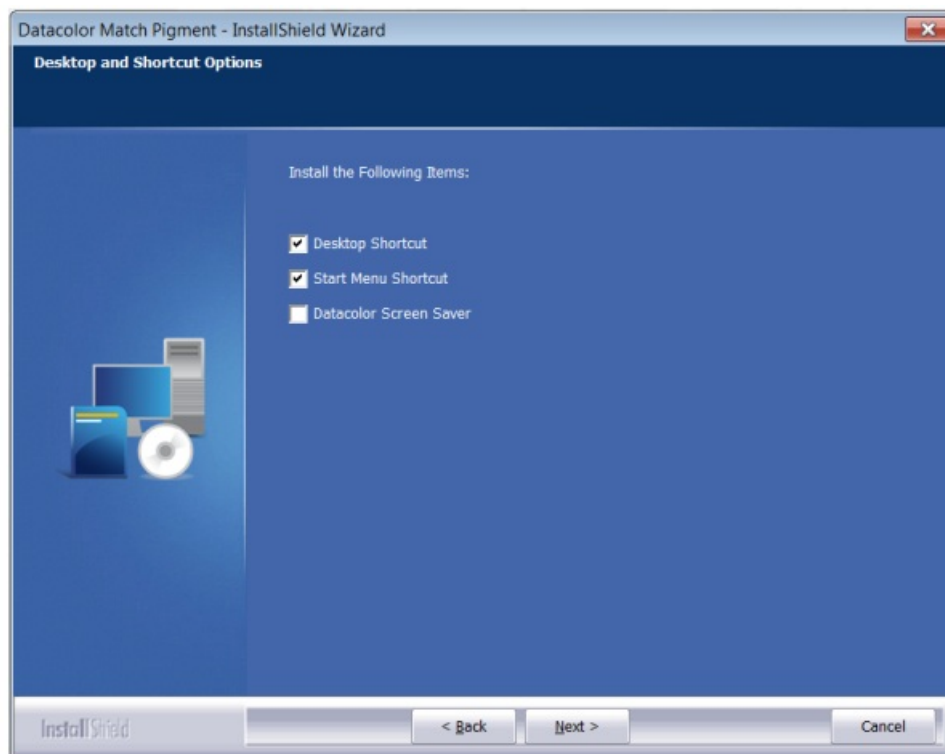
### Select Database Location

The installation confirms the folder location for the Datacolor MATCH PIGMENT database files.



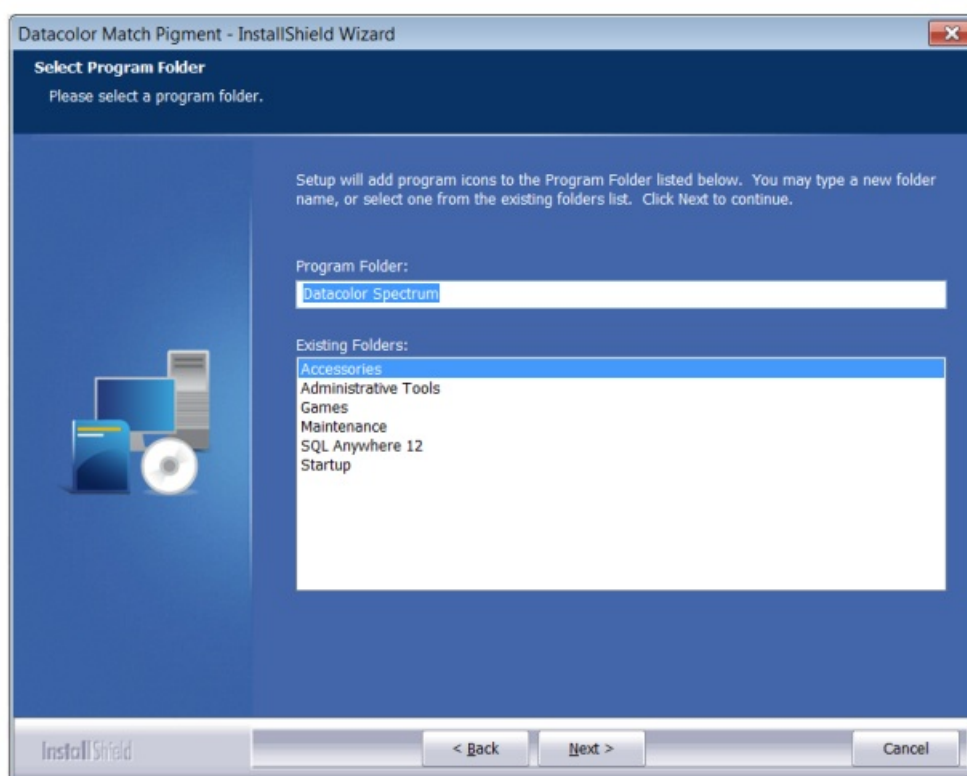
- To select a different folder for the database, click Browse.

## 11. Desktop and Shortcut Options.



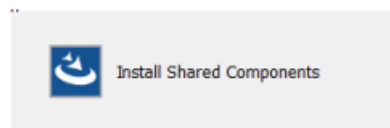
Click Next to continue.

## 12. Program Folder Selection



Click Next to continue.

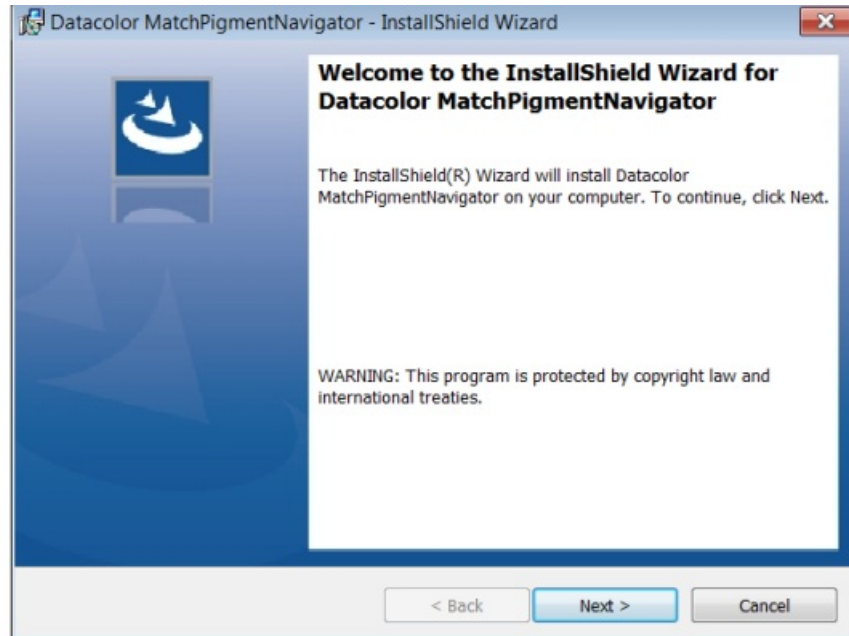
## 13. Shared Components will now install.



The Datacolor MatchPigmentNavigator window will launch. This component contains elements that are shared

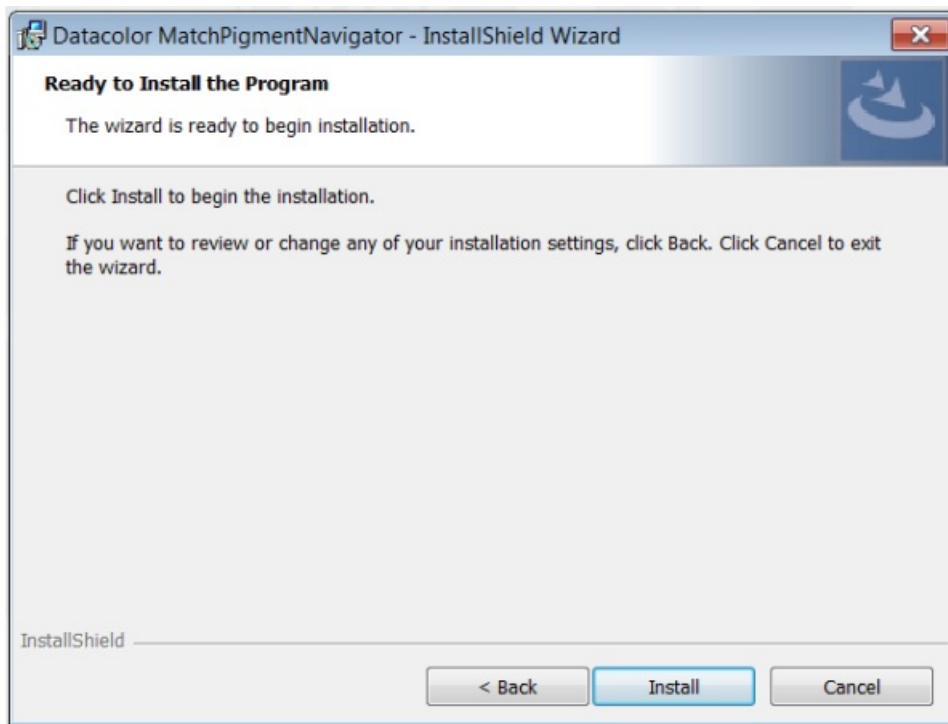


with the Datacolor TOOLS application. This screen will display:



Click Next to continue.

14. The MatchPigmentNavigator wizard will continue.



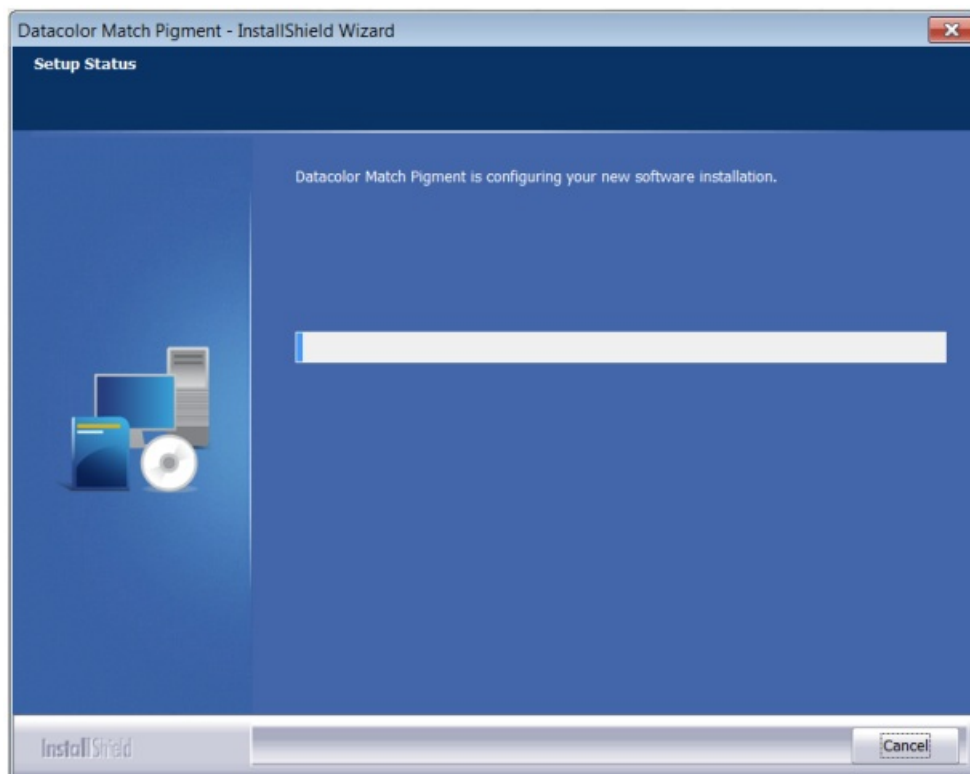
Click Install to continue.

15. A progress bar will appear on the window and when it fills, the MatchPigmentNavigator installation will be complete.

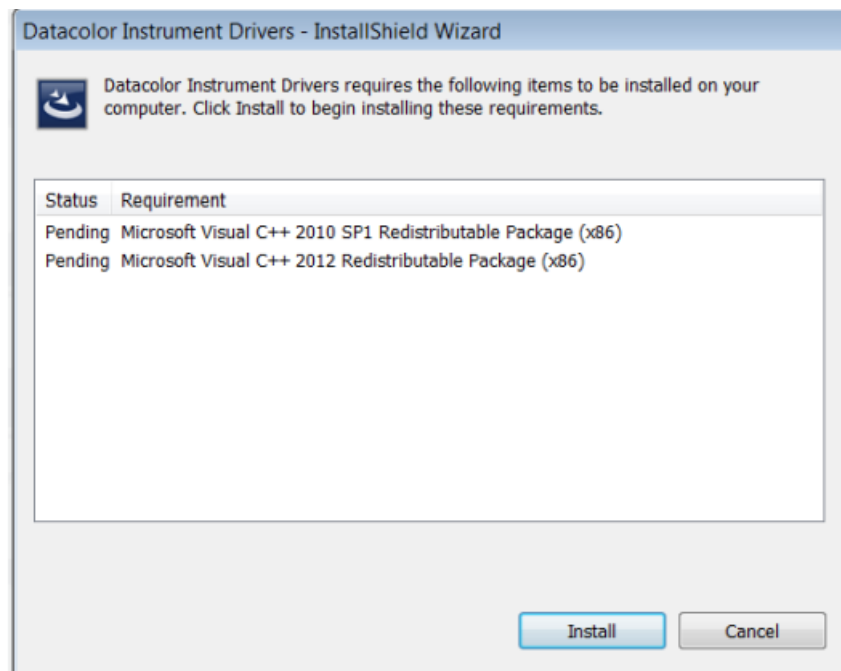


Click Finish to continue.

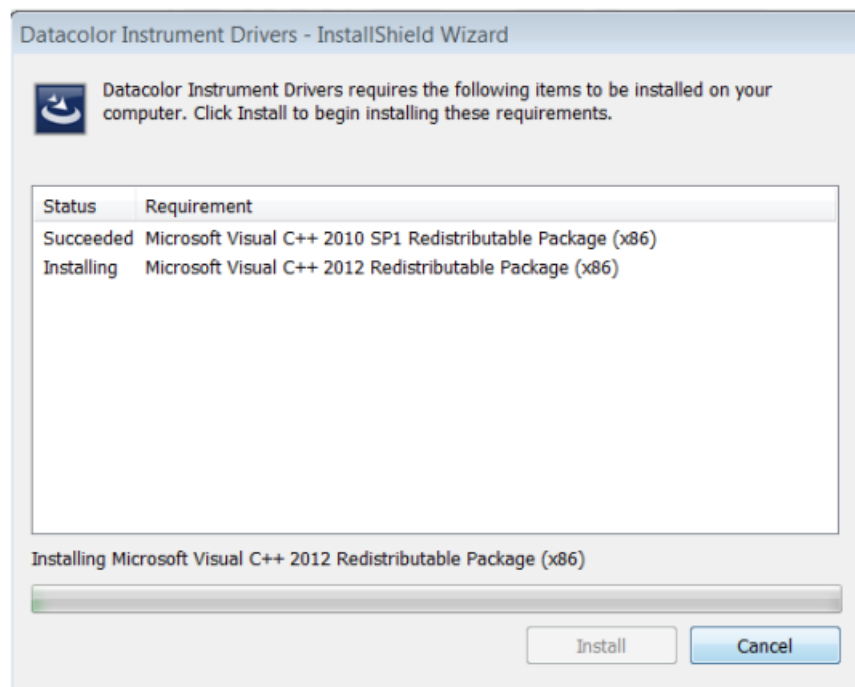
16. The installation will now begin:



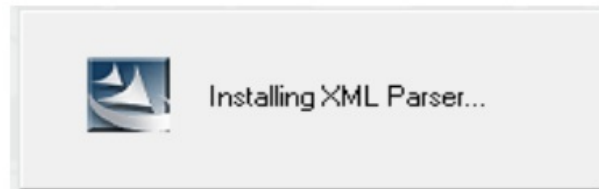
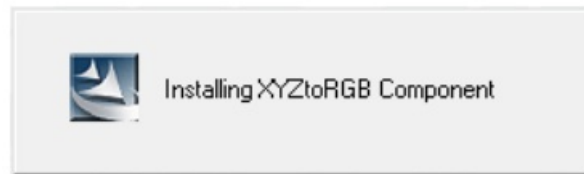
17. Installing the Instrument Drivers:



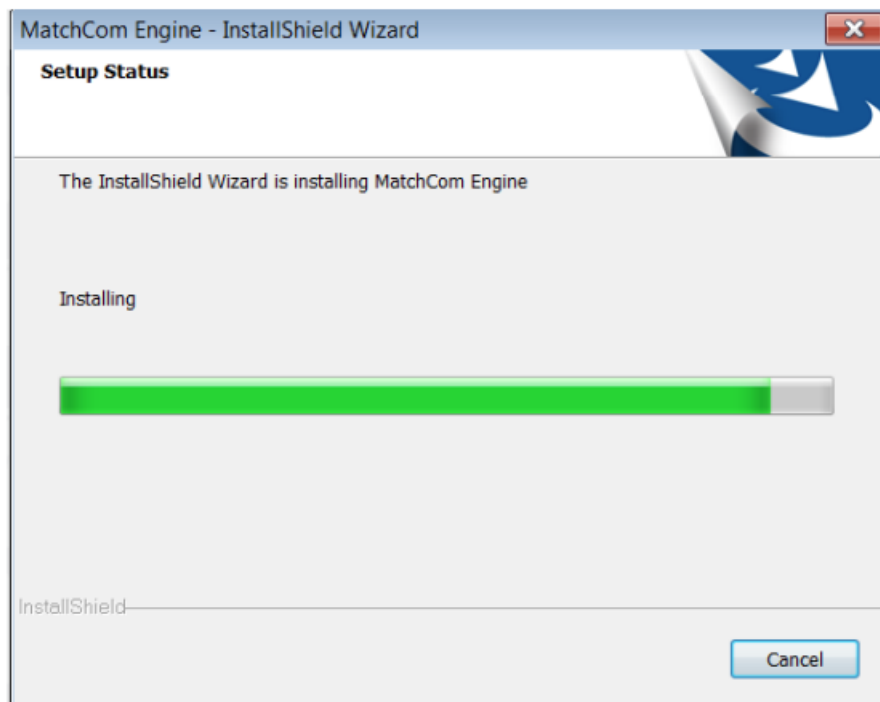
Click install to continue.



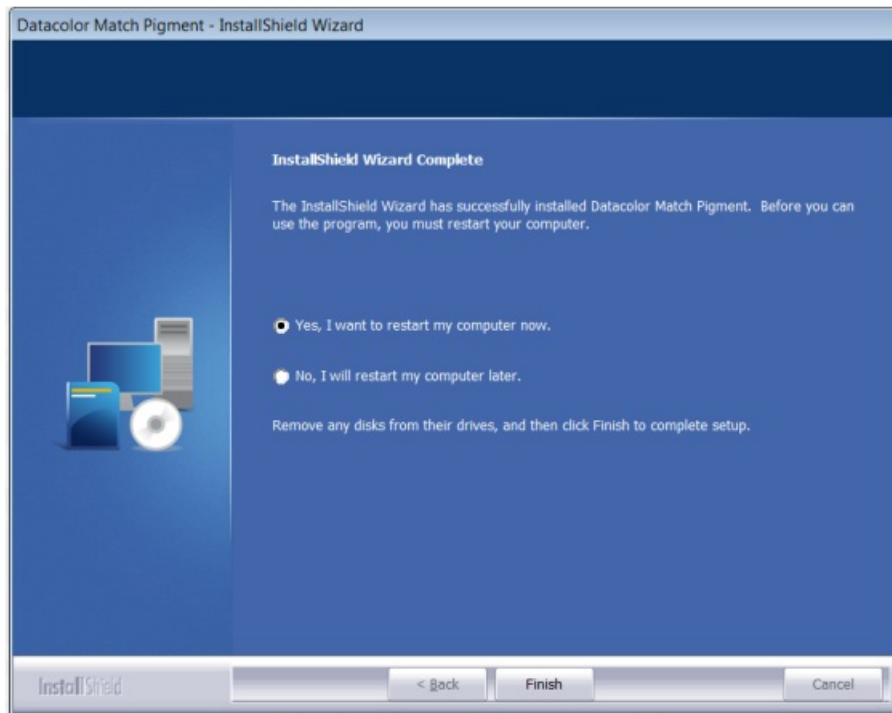
18. Installing additional components:



19. The MatchCOM matching engine is installed:

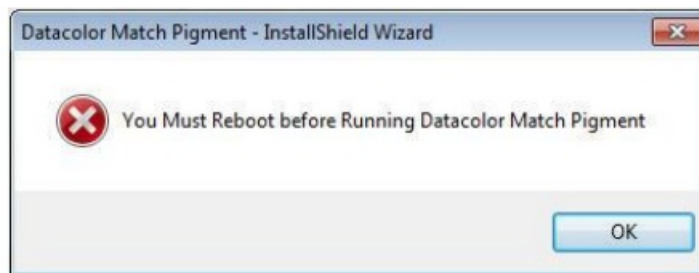


20. After the installation is completed, you will see this screen:



21. You will be prompted to reboot your computer.

You must reboot before you can start the Datacolor Match Pigment program. If you select No, you will receive the following message:



Click OK to reboot your computer.

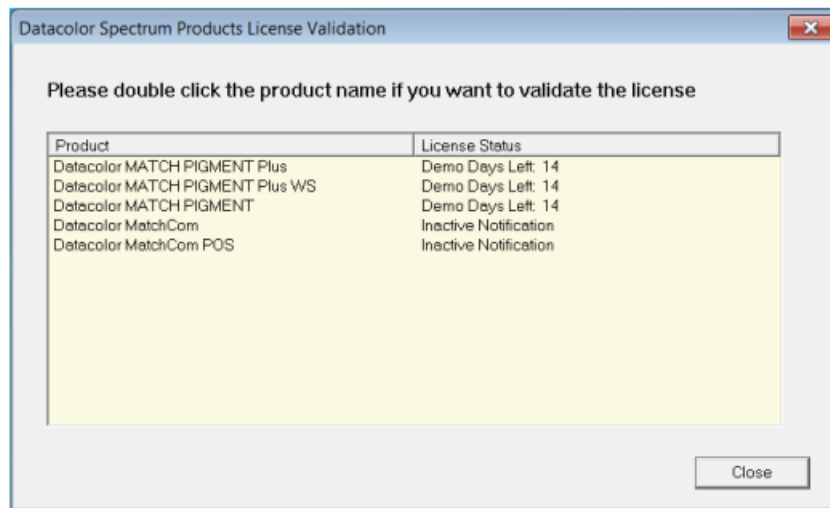
### Software Licensing Procedure

You must license the software to use it. When the program is installed, you are given a 14-day demonstration period during which you can run the programs without a valid license. We strongly recommend that you validate all software licenses immediately after installing the software. You should license Datacolor MATCHPIGMENT first. The procedure detailed below is used to license the software via a direct web connection.

### Licensing Datacolor MATCHPIGMENT

1. Launch Datacolor MATCHPIGMENT.

The License Validation screen is displayed:



- Double-click on the first product to be licensed.

### NOTES

You can license any product that appears on this window. During the demo period, you can click Close to bypass the licensing procedure. However, once the demo period has expired, you cannot proceed without validating the license(s).

- Double-click on the button for the Datacolor MATCHPIGMENT product to be validated.

The Datacolor Security Client window will open.



### NOTES

This screen remains open during the validation process. You will later be asked for the *Computer Validation Number*. We suggest that you return to this window, to copy and paste the *Computer Validation Number*. This will eliminate keyboarding errors.

Select **Continue**, while in the demonstration period, to bypass the validation procedure and open the program.

- In the Serial Number field, enter the serial number for the product you have selected. This is found on the CD case.
- Click on the link to the web connection:

The window below is displayed:



**Welcome to Datacolor's software validation web service. To validate your software, please enter the following information, then press continue.**

First Name:

Last Name:

E-Mail:

Serial Number:

[Contact Webmaster](#)

This window provides an Internet connection to the Datacolor web validation service, and remains open during the validation procedure.

- In the First Name, Last Name and Email fields, provide your contact information.
- In the Serial Number field, enter the product serial number again. It must match the number you entered in the previous screen.

6. Click the Continue button.

The window below is displayed:

**The serial number you entered is for Datacolor Match Pigment Datacolor Match Pigment Plus.**  
**Your Order Number is 123456.**

**Please verify that this purchase information is correct. If you have questions, click "Contact Webmaster".**

**Press Continue to validate your software.**

[Contact Webmaster](#)

This window verifies that the serial number is valid, and displays information about the product.

7. Click Continue to proceed.

The program will prompt you for the computer validation number:

**Please enter your Computer Validation Number as displayed in your Datacolor Software:**

[Validate Another](#) [Close This Window](#) [Contact Webmaster](#)

8. Enter the computer validation number from the Datacolor Security Client window, and click Validate to continue.

A number will be displayed in the Unlock Response Number field.

Please enter your Computer Validation Number as displayed in your Datacolor Software:

Unlock Response Number:

Please enter the above Unlock Response Number into the Unlock Response Number section of your Datacolor Software validation screen.

An email has been sent to [bbinder@datacolor.com](mailto:bbinder@datacolor.com) with confirmation of this transaction. Please keep this for your records.

[Validate Another](#) [Close This Window](#) [Contact Webmaster](#)

#### NOTE

You can copy the *Computer Validation* number from the *Datacolor Security Client* screen, using the standard Windows **Copy** command. You can paste it here, using the **Paste** command.

9. Return to the Datacolor Security Client screen, and enter the Unlock Response Number:

datacolor Security Client Ver 4

The demonstration period of this application has expired. You must purchase a license or validate your current license in order to continue using the application.

443: 0 of 1 Licenses used

[Internet enabled users may validate now by clicking on this link.](#)

Otherwise, to validate your software, please visit <http://prweb.datacolor.com>. If you do not have access to the internet, you can email the requested information from the enclosed form to [SoftwareLicense@Datacolor.com](mailto:SoftwareLicense@Datacolor.com) or phone your local sales office or dial 1-800-982-6496 for toll free service in the U.S. and Canada.

Serial Number

Computer Validation Number

Unlock Response Number

It may take up to seven days to validate your software. Please do so as soon as possible so that you won't be without the use of this software.

Version 4.3.0

#### NOTE

You can copy the *Unlock Response Number* from the web validation screen using the standard Windows **Copy** command, and paste it into this screen using the Windows **Paste** command.

10. Click Continue. The Security Client window closes.

The web validation screen remains displayed. The validation process is completed, and the Datacolor MATCHPIGMENT product you selected is now licensed.

To validate a different Datacolor product license:

Please enter your Computer Validation Number as displayed in your Datacolor Software:

Unlock Response Number:

Please enter the above Unlock Response Number into the Unlock Response Number section of your Datacolor Software validation screen.

An email has been sent to [bbinder@datacolor.com](mailto:bbinder@datacolor.com) with confirmation of this transaction. Please keep this for your records.

[Validate Another](#) [Close This Window](#) [Contact Webmaster](#)

- Click Close This Window. The Datacolor license validation window is displayed.
- Choose the next product license to be validated, and repeat the procedure.

11. To end the licensing procedure, click Close this Window.

#### NOTE

You will receive an email confirmation containing the Serial Number and Unlock Response Number for each license you validate. We recommend that you make copies of these for reference purposes.

#### Americas

+1.609.895.7465  
+1.800.982.6496 (toll-free)

+1.609.895.7404 (fax)  
[NSASupport@datacolor.com](mailto:NSASupport@datacolor.com)

Europe

+41.44.835.3740  
+41.44.835.3749 (fax)  
[EMASupport@datacolor.com](mailto:EMASupport@datacolor.com)

Asia Pacific

+852.2420.8606  
+852.2420.8320 (fax)  
[ASPSupport@datacolor.com](mailto:ASPSupport@datacolor.com)

Or Contact Your Local Representative  
Datacolor has representatives in over 60 countries.  
For support, visit <http://industrial.datacolor.com/support>.  
Manufactured by Datacolor  
5 Princess Road  
Lawrenceville, NJ 08648  
1.609.924.2189

Committed to Excellence. Dedicated to Quality. Certified to ISO 9001 in Manufacturing Centers Worldwide.

Documents / Resources

	<a href="#">datacolor Match Pigment Smart Color Matching Solution</a> [pdf] Installation Guide Match Pigment Smart Color Matching Solution, Match Pigment, Smart Color Matching Solution, Color Matching Solution, Matching Solution, Solution
---	---