



datacolor Formulation Software Match Textile Installation Guide

[Home](#) » [datacolor](#) » datacolor Formulation Software Match Textile Installation Guide 



Datacolor Monitor Installation Guide

Contents

- [1 Installation Overview](#)
- [2 Installation Procedure](#)
- [3 Setup types](#)
- [4 Validating Datacolor Software](#)
- [5 Documents / Resources](#)
- [6 Related Posts](#)

Installation Overview

This document describes the installation of Datacolor Software to your computer's hard disk. If you have purchased your computer from us, the software will be already installed. If you purchased your own computer, follow these instructions to install our software on your computer.

Before you begin the installation, you should have all installation USB's, and Microsoft Windows* should be properly installed on your computer.

1.1 System Requirements

The system requirements shown below are the minimum configuration to ensure effective operation of the standard Datacolor Monitor software. Configurations below stated requirements may work but are not supported by Datacolor.

Microprocessor	Pentium IV 1.9 GHz processor require
RAM	512 MB minimum 1 GB is recommended, and for generally increased performance.
Hard Disk	Minimum of 2 GB free disk space.
Video Monitor/Graphics	16 MB, high-resolution graphics card. Color patch displays require 1024 x 768 (small font) or better.
Printer	Windows supported printers: Ink Jet, Laser Printers. Dot matrix printers are not supported.
Mouse	Required.
Microsoft Windows	Windows 2000 Professional, WIN XP Pro, Windows 10
Network	Networks that are 100% windows compatible. Datacolor MONITOR operates on networks compatible with the Microsoft Windows operating systems by using the application layer of the network operating system.

Before You Begin

- Microsoft Windows® should be properly installed on your computer.
- You must have Windows Administrator rights to install this software.
- Restart the system before installing the software. This removes any memory-resident modules that may interfere with the installation, and is especially important if you have been running a previous version.
- Install Sybase V12 database management software.
- Close all other programs that are running.
- Have all program installation readily available.

Important, Before You Begin! You must have Administrator Rights to install this software and you must have installed Sybase first!

Installation Procedure

To install Datacolor Monitor

1. Place the Datacolor Monitor USB into the port.
2. Select the Menu.exe

The Main Installation menu should appear automatically:

datacolor
MONITOR®

MONITOR®



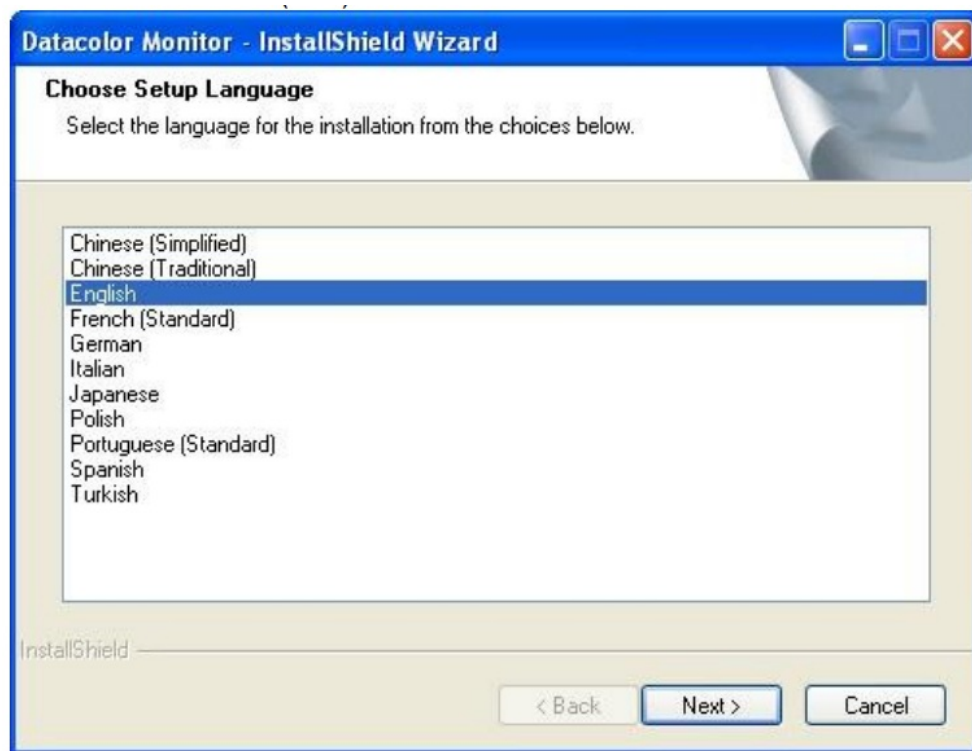
- Install Sybase 12
- Install Datacolor MONITOR™
- Visit Datacolor on the web
- Exit

To perform a command, simply click it...

Select Install Datacolor MONITOR



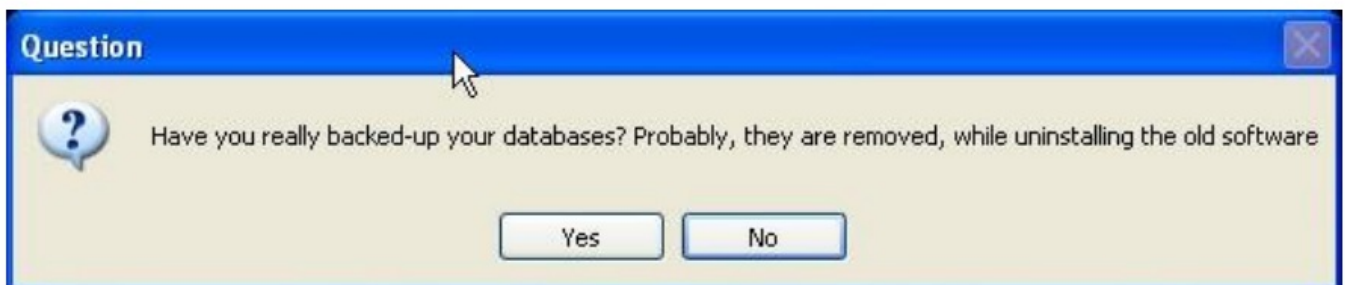
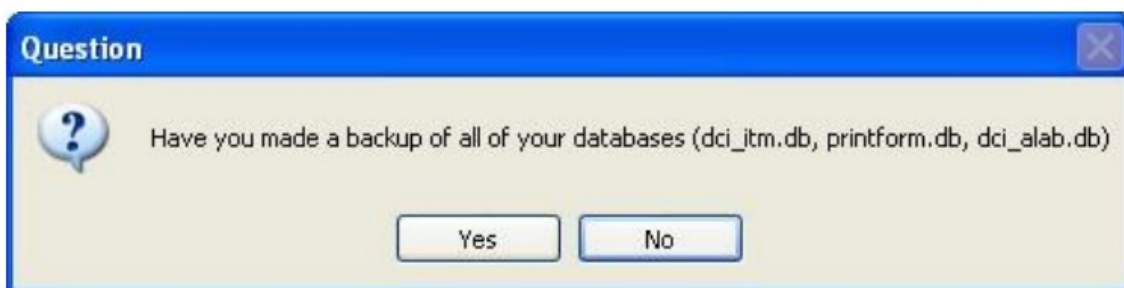
When the Main Installation Menu is displayed, choose "Install Datacolor MONITOR" The Datacolor MONITOR installation will guide you through installing Datacolor MONITOR on your computer
Select a language from the list box.(Language include Chinese (simplified), Chinese (traditional), English, French (standard), German, Italian, Japanese, Portuguese (standard) and Spanish.) Local Area Network (LAN)



Click "Next". The installation wizard will start – follow the prompts to install Datacolor MONITOR on your computer. The next dialogs only appear if pre Spectrum software is already installed on the system. If it's a new installation the Setup proceeds with the Welcome dialog.

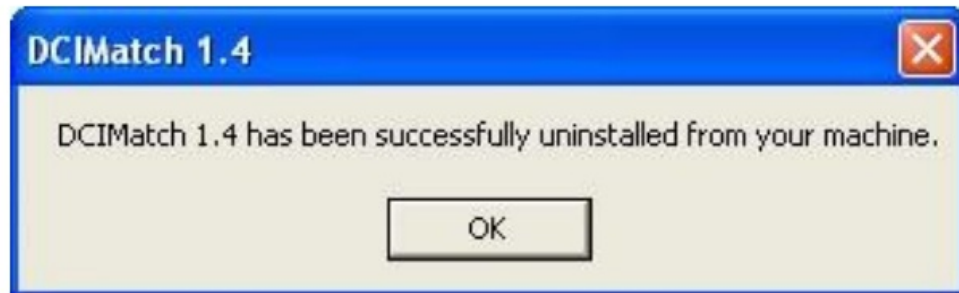
When you upgrade from CenterSideQC 1.x to Datacolor MONITOR v1.6, the Setup uninstalls the old software before the new Software is installed (DCIMatch; SmartSort; .CenterSiceQC, Fibramix, matchExpress or Matchpoint)

The Setup asks you twice if you have made a backup of your databases. If not, click 'No' to exit the setup.

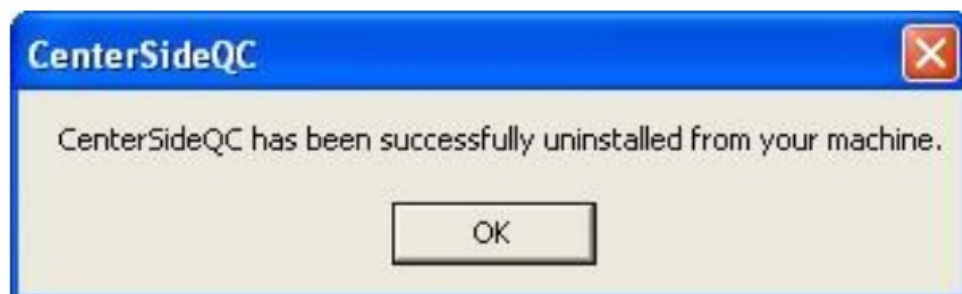


Depending on the installed software you are informed about the un-installation process. The Setup program shows a message for each program that should be installed.

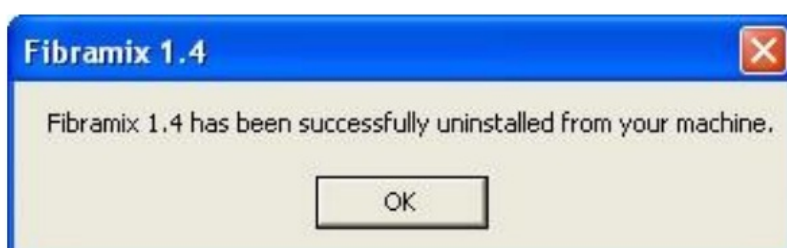
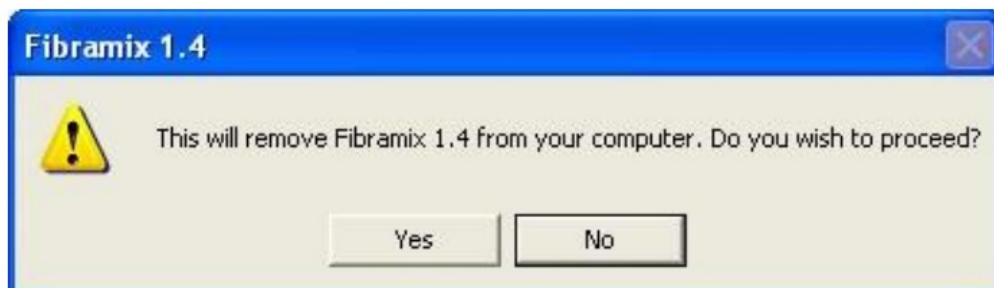
Uninstalling DCIMatch



Uninstalling CenterSideQC (if installed)



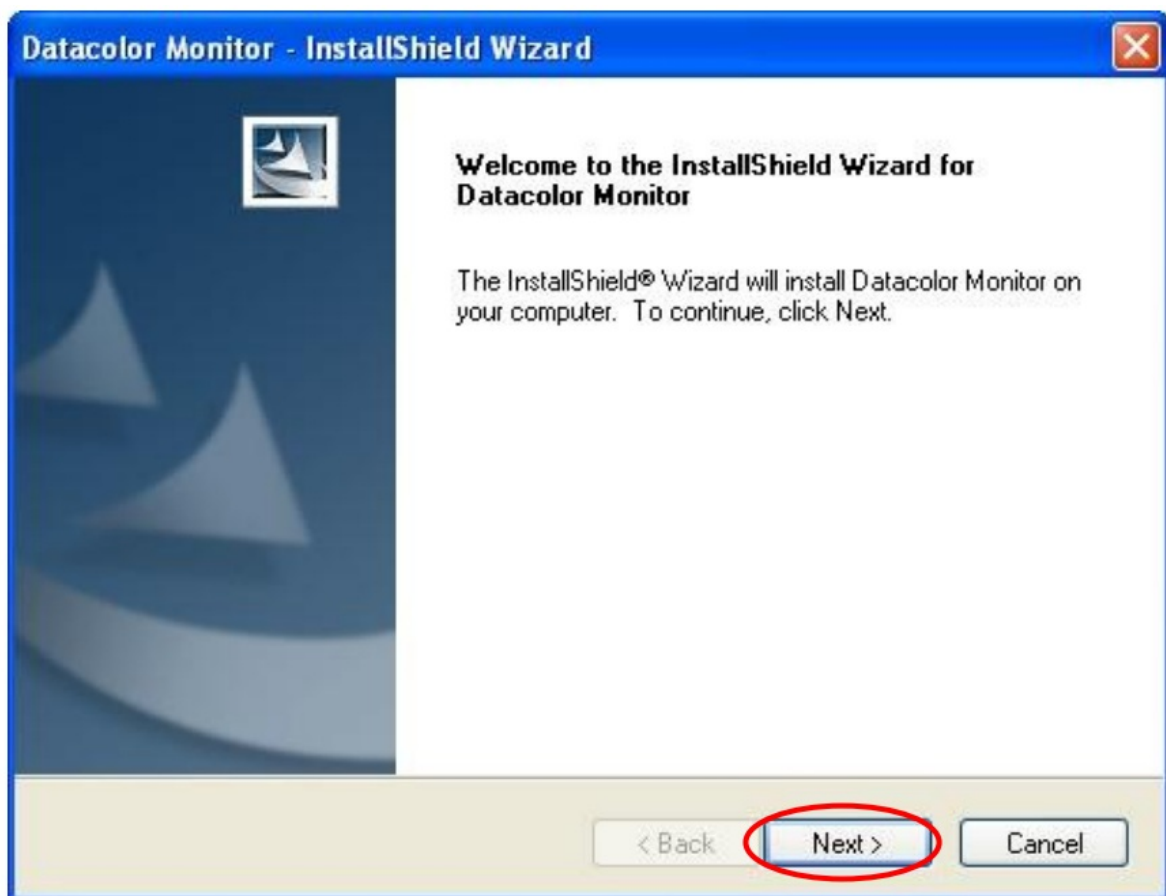
■ Uninstalling Fibratrix (if installed)



Uninstalling SmartSort (if installed)



The setup continues with the Welcome dialog



If you are installing Datacolor MONITOR for the first time, click "Next" to access the Datacolor Software License Agreement dialog. You must select the acceptance radio button in order to install Datacolor MONITOR. If you are upgrading an existing, licensed copy of Datacolor Match, this screen will not appear.

Datacolor Monitor - InstallShield Wizard

License Agreement

Please read the following license agreement carefully.

IMPORTANT: READ THIS AGREEMENT CAREFULLY. BY CLICKING ON THE "YES" BUTTON, INSTALLING, COPYING OR OTHERWISE USING THE DATACOLOR SOFTWARE, YOU AGREE TO BE BOUND BY THE TERMS OF THIS LICENSE. IF YOU DO NOT AGREE TO THE TERMS OF THIS LICENSE, CLICK ON THE "NO" BUTTON AND DO NOT INSTALL, COPY OR OTHERWISE USE THE DATACOLOR SOFTWARE. This license agreement ("License") is a legal agreement between you and Applied Color Systems, Inc. (doing business as Datacolor) ("Datacolor") granting you certain rights to access and use the Datacolor software owned by Datacolor and provided with this License (the "Software"). This License is governed by the Terms and Conditions of Sale and Service (the "Terms") attached below. Except as specified in the Terms, in the event of a conflict between the Terms and a term in this License, the terms of the License shall govern. YOU HEREBY AGREE, BOTH ON YOUR OWN BEHALF AND AS AN AUTHORIZED REPRESENTATIVE OF ANY ORGANIZATION FOR WHICH YOU ARE

☒ I accept the terms of the license agreement

☐ I do not accept the terms of the license agreement

Print

InstallShield

< Back **Next >** Cancel

Select the acceptance radio button and click the "Next" button to proceed.

Datacolor Monitor - InstallShield Wizard

Customer Information

Please enter your information.

Please enter your name and the name of the company for which you work.

User Name:
Gerd Rosenberger

Company Name:
Datacolor

InstallShield

< Back **Next >** Cancel



Click "Next" to select default installation folder. Normal default is C:\Program Files\Datacolor

Setup types

You will now see a screen offering you several different setup options.

Complete

(All modules are installed on your computer.)

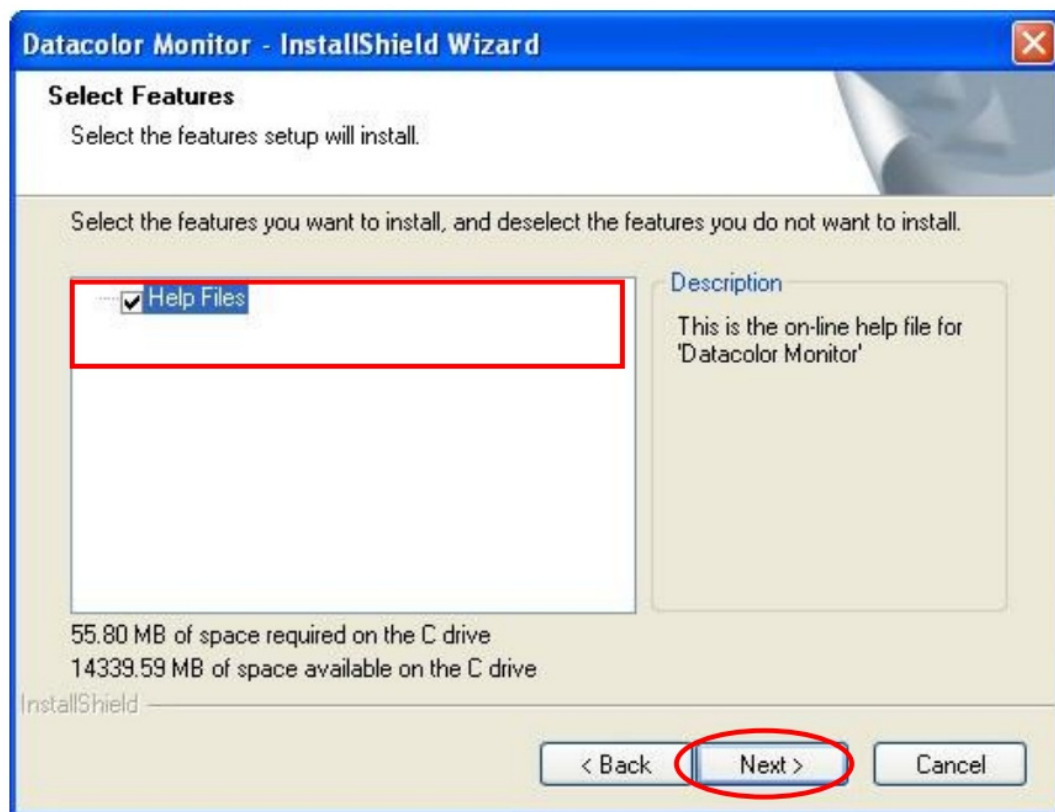


Select the Setup Type to install and click "Next".

Custom:

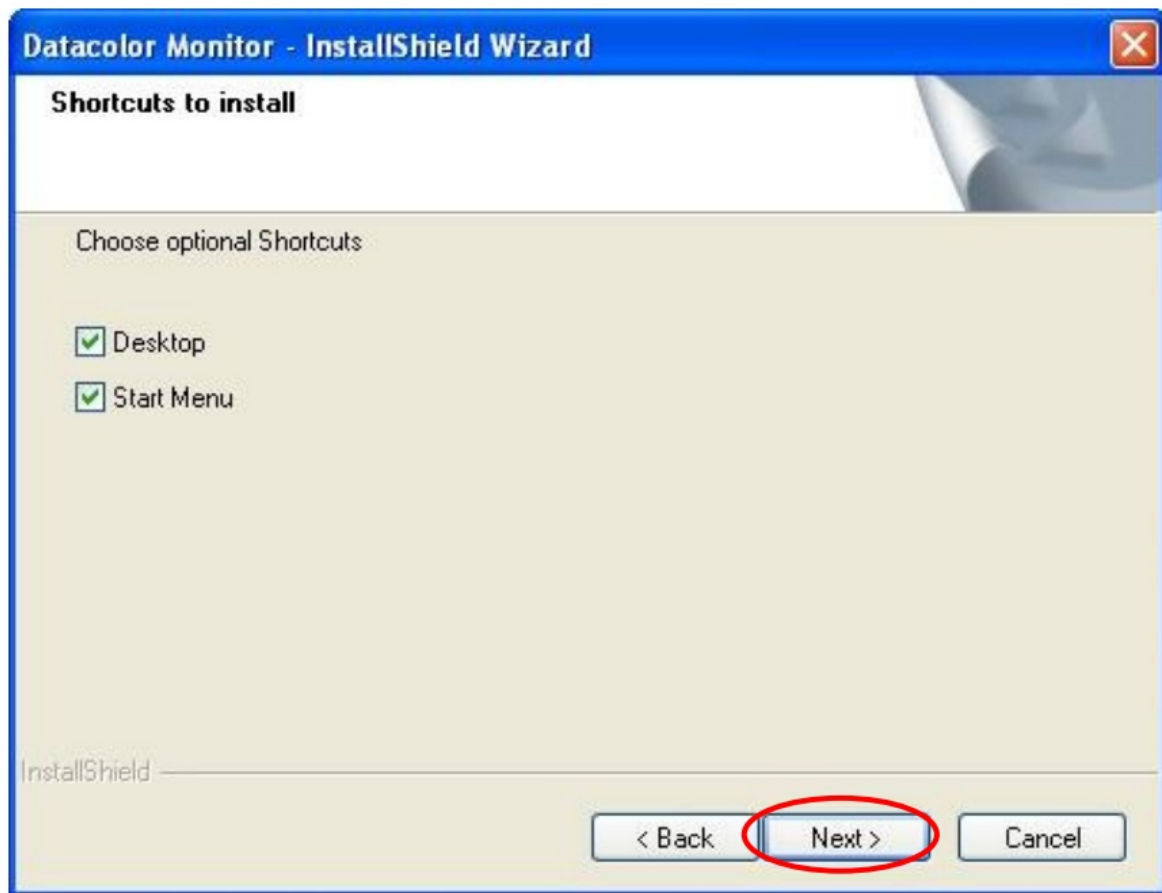
Please note, this is not recommended for typical user installations.

Custom setup allows you to install specific features instead of the entire Datacolor MONITOR installation.

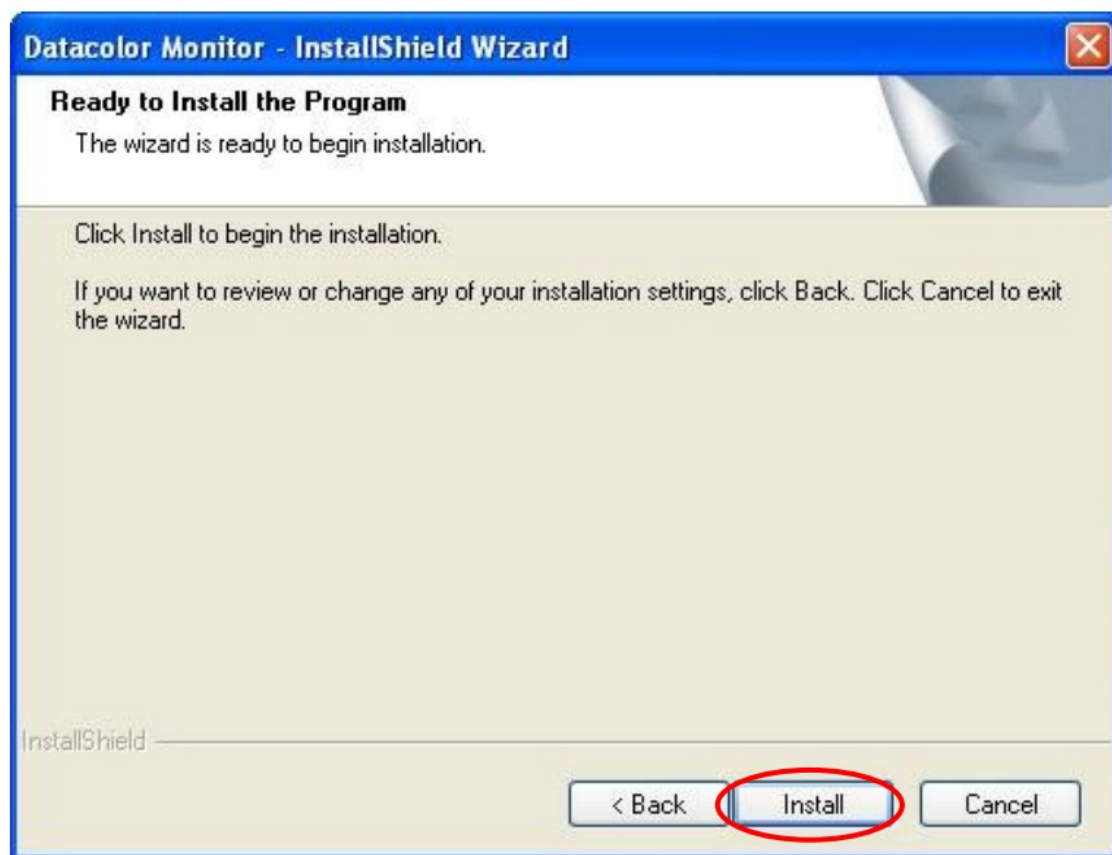


Click “ Next ” to select the shortcuts to install .

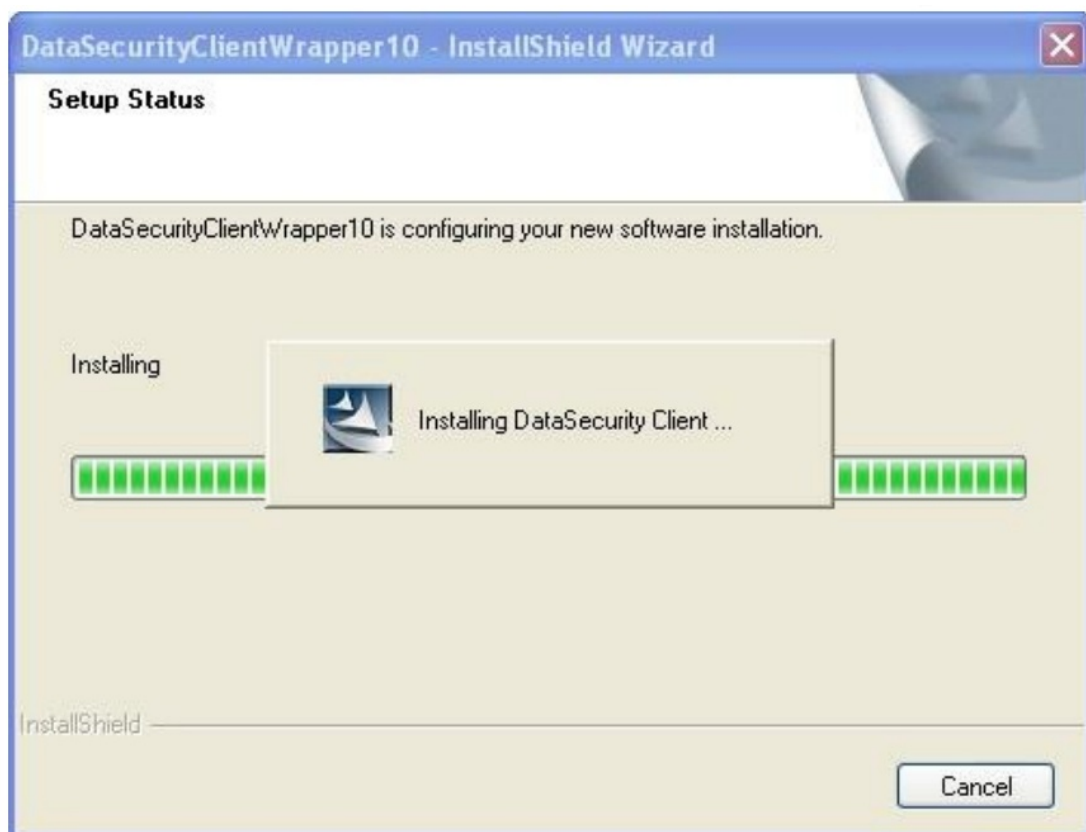
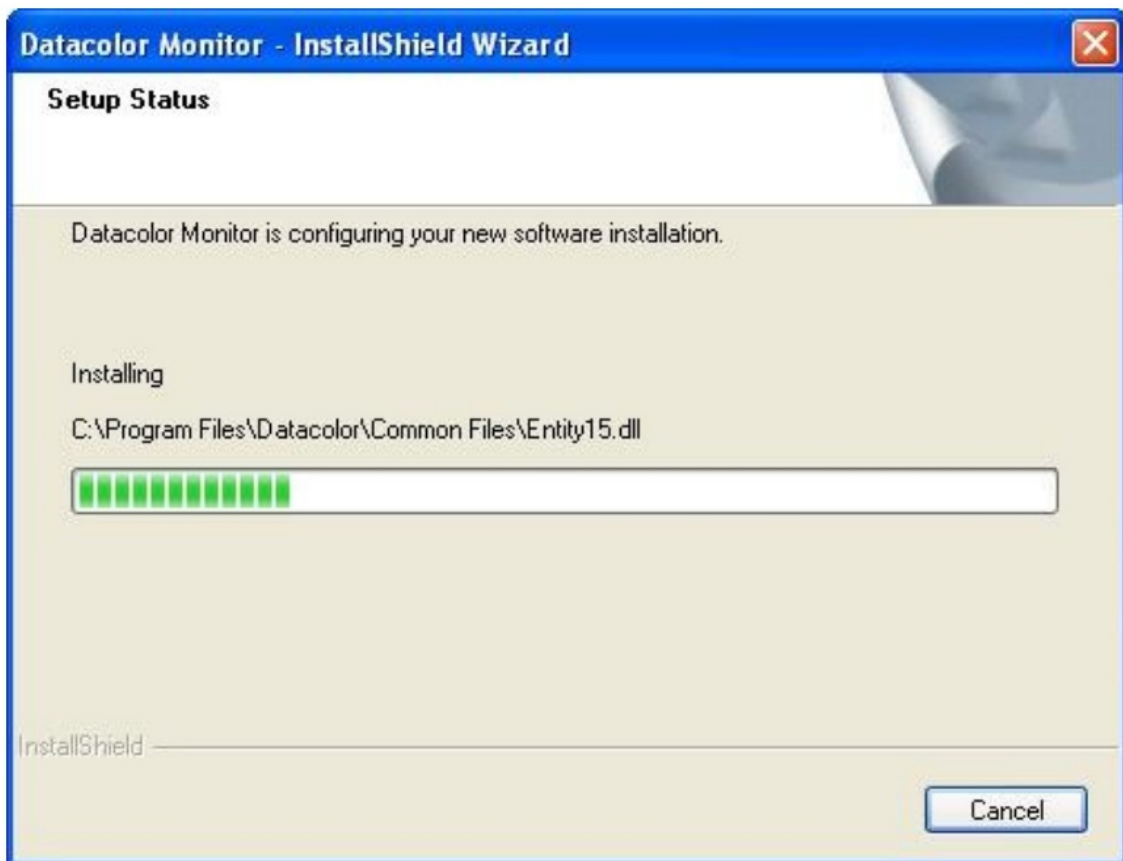
At default, the installation will put Datacolor MONITOR icon on your desktop and a shortcut to start program menu.



Click "Next" to continue the installation.



Click "Install" to transfer the data Setup starts transferring the files



The 'DataSecurityClient' is installed



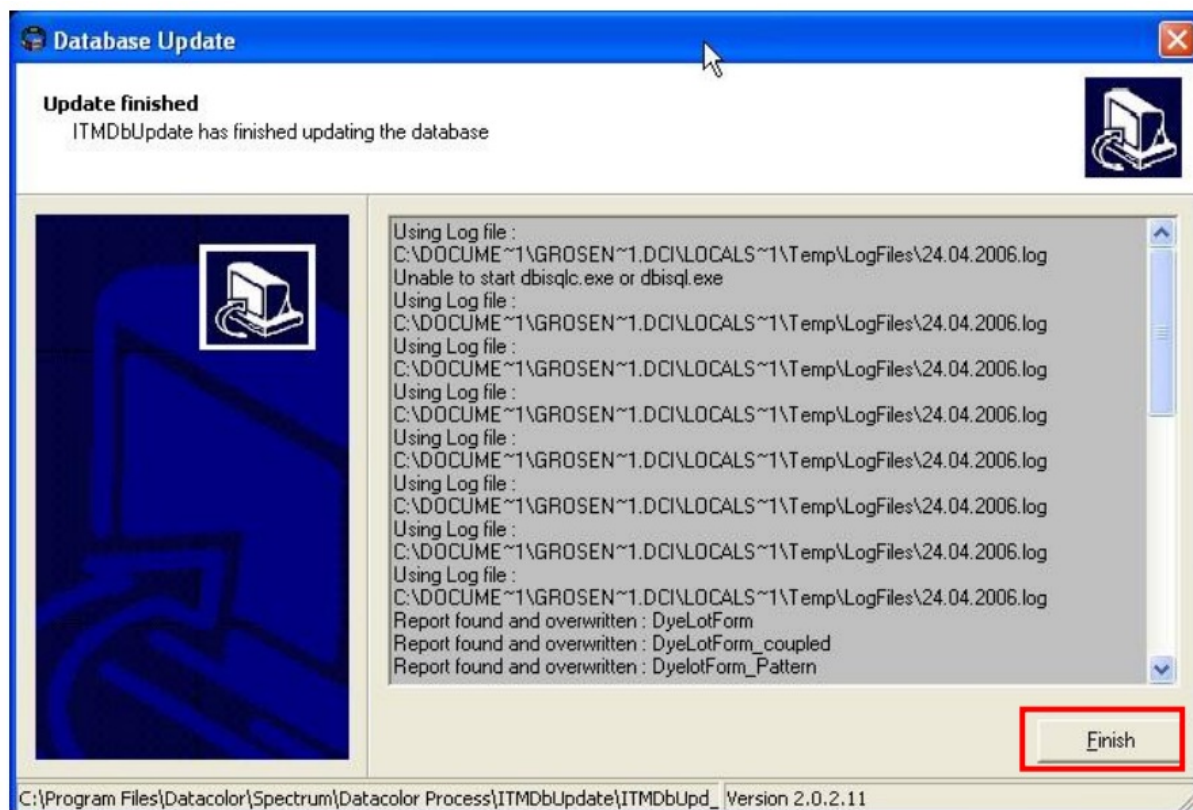
followed by installing the Datacolor Envision components:



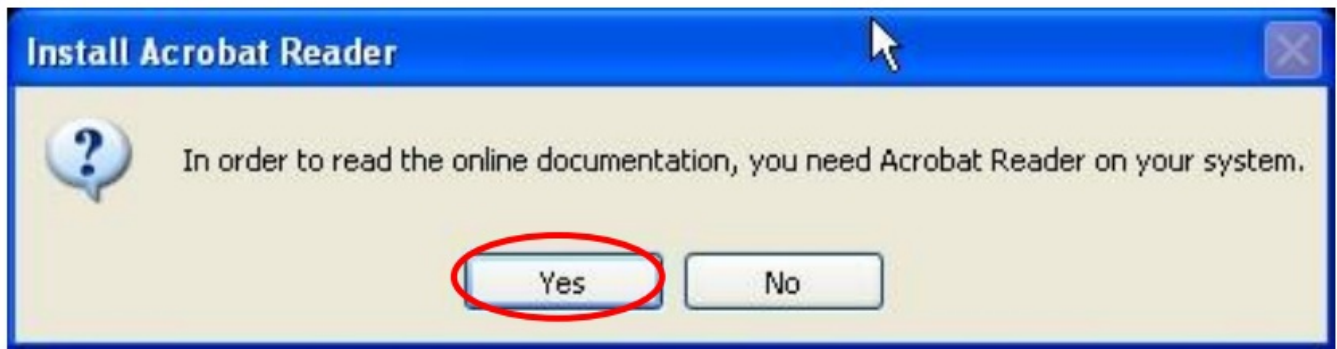
followed by installing the instrument drivers:



The database update starts if it is an update of a previous program version.



Click the 'Finish' button at the end of the database update.
Followed by installing the Acrobat Reader



Click “Yes” to start the Acrobat reader installation and follow the instructions.
Finally, the “Complete” screen display.



Click “ Finish ” to restart your computer.
Datacolor MONITOR is now installed on your system!

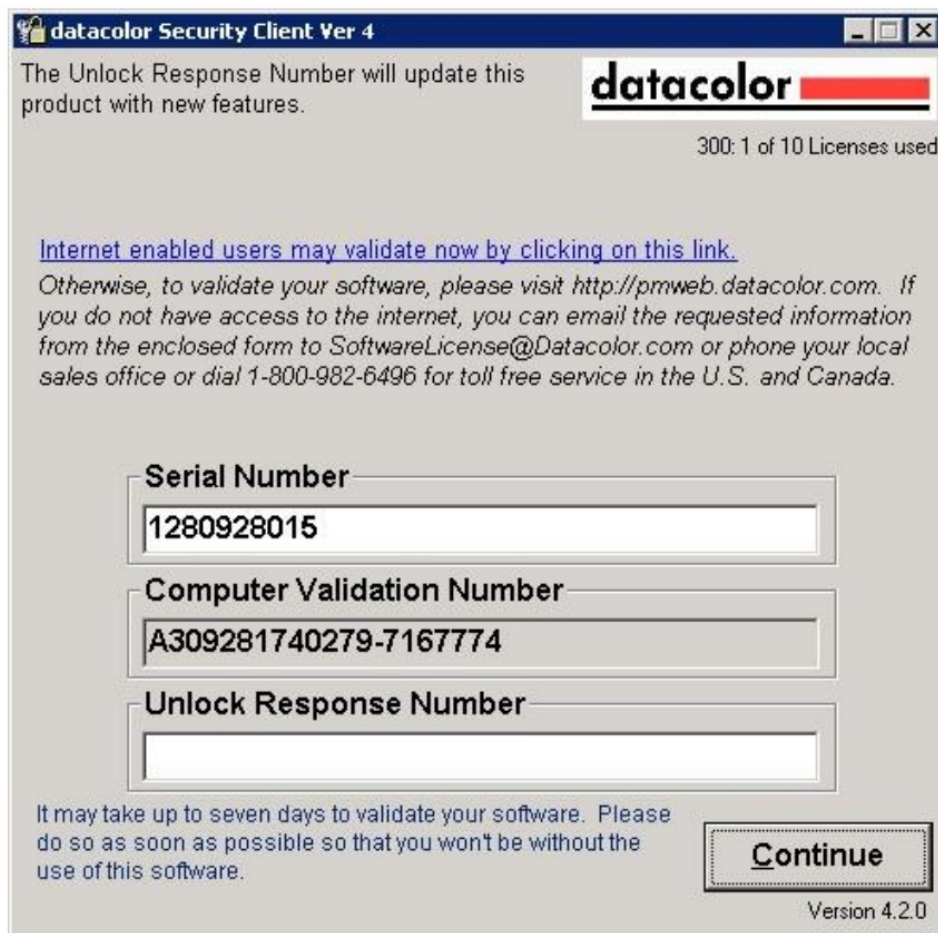
Validating Datacolor Software

Datacolor Spectrum Software is protected from unauthorized use by a software license. When the software is initially installed, the software license is in a demo period that will allow access for a fixed amount of time. In order to run the software after the demo period, the software license must be validated.

There are a number of ways to validate the software. In general you will need the following information:

1. You will need the Serial Number for your software. This number is supplied by Datacolor and is found on the USB case.
2. You will need a Computer Validation Number. This number is generated by the security software and is unique to your computer.

Validation information is accessed and input in the Datacolor Validation Window shown below:



Datacolor Tools will display the Validation Window every time it starts during the demo period. The Validation Window can be accessed from "About" window in Datacolor Tools, select "License Info". You can validate the software in 3 ways:

- Using a Web Connection – Link is on the Validation Window. Example is shown below
- E-Mail – Send Serial Number and Computer Validation Number for the product to SoftwareLicense@Datacolor.Com. You will receive an Unlock Response Number by e-mail that you will put into the Validation Window.
- Phone – In the US and Canada phone toll free 1-800-982-6496 or call you local sales office. You will need the Serial Number and the Computer Validation Number for the product. You will be given an Unlock Response Number that you will put into the Validation Window.

datacolor Security Client Ver 4

The Unlock Response Number will update this product with new features.

300: 1 of 10 Licenses used

[Internet enabled users may validate now by clicking on this link.](#)

Otherwise, to validate your software, please visit <http://pmweb.datacolor.com>. If you do not have access to the internet, you can email the requested information from the enclosed form to SoftwareLicense@Datacolor.com or phone your local sales office or dial 1-800-982-6496 for toll free service in the U.S. and Canada.

Serial Number
1280928015

Computer Validation Number
A309281740279-7167774

Unlock Response Number

It may take up to seven days to validate your software. Please do so as soon as possible so that you won't be without the use of this software.

Continue

Version 4.2.0

Type the Serial Number for the product into this field.

Tip: To avoid retyping this number later, highlight the number and then copy it to the clipboard using the Ctrl-C command.

Click the link to go to the Datacolor Software Validation Web Service.

Welcome to Datacolor's software validation web service. To validate your software, please enter the following information, then press continue.

First Name: John

Last Name: Doe

E-Mail: xyz@company.com

Serial Number: 1217185437

Continue

[Contact Webmaster](#)

Type a contact name in the First Name and Last Name fields.

Give your e-mail address.

Input the product Serial Number.

Tip: Paste it if you copied it earlier.

Click the Continue button.

The serial number you entered is for Datacolor Match Pigment Datacolor Match Pigment Plus.
Your Order Number is 123456.

Please verify that this purchase information is correct. If you have questions, click "Contact Webmaster".

Press Continue to validate your software.

Continue

Back

[Contact Webmaster](#)

This screen verifies that the serial number is valid and displays information about the product.

Click the Continue button to proceed.

Please enter your Computer Validation Number as displayed in your Datacolor Software:

229837115-7167774

Validate

Enter the Computer Validation Number from the Validation Window.

Tip: You can copy this number on the clipboard from the Validation Window and paste it in here.

[Validate Another](#) [Close This Window](#) [Contact Webmaster](#)

Please enter your Computer Validation Number as displayed in your Datacolor Software:

229837115-7167774

Validate

Unlock Response Number:

19539235-1110717089

This is your Unlock Response Number. Enter this number into the Validation Screen on your computer.

Tip: You can copy this number on the clipboard and paste it into the Validation Screen.

Please enter the above Unlock Response Number into the Unlock Response Number section of your Datacolor Software validation screen.

An email has been sent to bbinder@datacolor.com with confirmation of this transaction. Please keep this for your records.

[Validate Another](#) [Close This Window](#) [Contact Webmaster](#)

After you have entered the Unlock Response Number into the Validation Screen, your software is validated. You can validate additional programs by selecting the Validate Another option

ODBC Data Source Administrator

Datacolor MATCH MONITOR™ Stand-Alone Installation Guide (July 2021)

All efforts have been made to ensure the accuracy of the information presented in this format. However, should any errors be detected, Datacolor appreciates your efforts to notify us of these oversights.

Changes are periodically made to this information and are incorporated into forthcoming versions. Datacolor reserves the right to make improvements and/or changes in the product(s) and/or program(s) described in this material at any time.

© 2008 Datacolor. Datacolor, SPECTRUM and other Datacolor product trademarks are the property of Datacolor. Microsoft and Windows are either registered trademarks of Microsoft Corporation in the United States and/or other countries.

To obtain information on local agents, contact either of the offices listed below, or visit our website at www.datacolor.com.

Support Questions?

If you need help with a Datacolor product, please contact one of our top-rated technical support teams located around the world for your convenience. You can find contact information below for the Datacolor office in your area.

Americas

+1.609.895.7465

+1.800.982.6496 (toll-free)

+1.609.895.7404 (fax)

NSA Support@datacolor.com

Europe

+41.44.835.3740
+41.44.835.3749 (fax)
EMASupport@datacolor.com


Asia Pacific
+852.2420.8606
+852.2420.8320 (fax)
ASPSupport@datacolor.com

Or Contact Your Local Representative
Datacolor has representatives in over 60 countries.
For a complete list, visit www.datacolor.com/locations.

Manufactured by Datacolor
5 Princess Road
Lawrenceville, NJ 08648
1.609.924.2189

Committed to Excellence. Dedicated to Quality.
Certified to ISO 9001 in Manufacturing Centers Worldwide.

Documents / Resources

	datacolor Formulation Software Match Textile [pdf] Installation Guide Formulation Software Match Textile, Software Match Textile, Match Textile, Formulation Software, Software
--	--

[Manuals+](#)