

DC200R Datacolor Paint Installation Guide



Datacolor Paint

Installation Guide

Step 1 – Download

Download the latest Datacolor Paint Version from:

<https://www.datacolor.com/business-solutions/downloads/#download-paint>

Notes:

- Save the download file to your local PC or to a USB Flash drive.

Step 2 – Install

- Right click on the download file and select **Open With – Windows Explorer**
- If you have questions on installing or training to use your Datacolor Paint software – Click on the training video folder and open the index.html file.
- To continue with installation/upgrade select **Setup.exe**
- License Activation (online)- Enter Activation Code and click **Activate**.

License Activation

datacolor

Product Name: MatchQC
 Status: Not Activated
 Activation Code:

☐ Offline



Product Name: Prod_Paint
 Status: Active
 Activation Code:

☐ Offline Activation

Offline Operations

Offline Activation

To Activate Offline: Generate a request token file and upload it in the End User Portal which will generate a response file. Upload that file in the Upload Response tab section.

Request Token File:

C:\Users\JLoehr\downloads\Prod_Paint_ActivationRequest.txt

License Details

Offering: Paint LAB-R
 Plan: Perpetual with Maintenance
 Customer: Datacolor Product Management
 SKU: 1011-0327
 Order Ref ID: Jason Loehr
 Entitlement ID: ent_n-YGFyO0DEy-QUTlhR25xg
 License Expiry: None
 Maintenance Expiry: 2026-04-19
 Lease Expiry: 2026-04-15

License	Used	Remaining
LAB_R	0	1
PRO_X	0	1

Click **Close** to continue.

Notes:

- For offline activation- please follow instructions from the Offline Operations in the license manager.

➤ Select your **Language** and click **Next**



➤ Click **Install** (Installation could take up to 15 minutes to load)



➤ Click **Finish** (If any part of installation does not install, please restart your PC and install again)



Notes:

- For Datacolor Paint upgrades, this is the final step.

Step 3 – Setup (Initial Installation only)

- Click on the **Paint** icon to get started

Follow steps to install your manufactures database

- Click **OK** when prompted to load your Database
- **Browse** to your database file (*.bak) and select the database supplied and click

Install

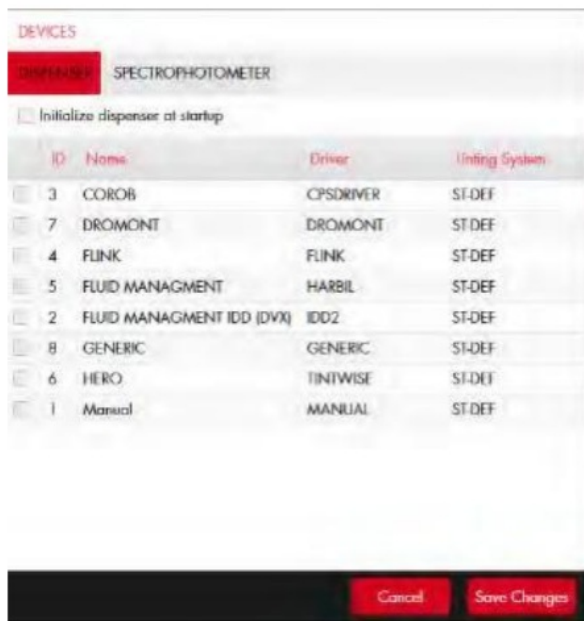


- Click **OK** when installation is complete
- When prompted, type in your **5-digit POS ID** that was supplied and click **OK**.



Follow steps for Dispenser and Spectrophotometer selections

➤ When prompted, select your **Dispenser**, then select **Save Changes**.



➤ When prompted, select your **Spectrophotometer**, then select **Save Changes**.

Notes:

- For a DC200R or DC 20D select Datacolor Cometflash

DC200R Setup

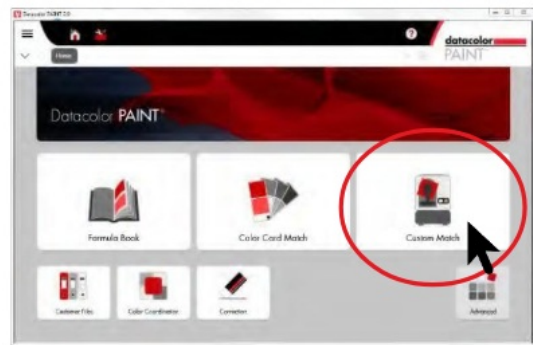
Step 1:

Connect your Spectro to your computer with **USB** and plug in your power supply cord. Turn your Datacolor 200 Spectro **ON**.



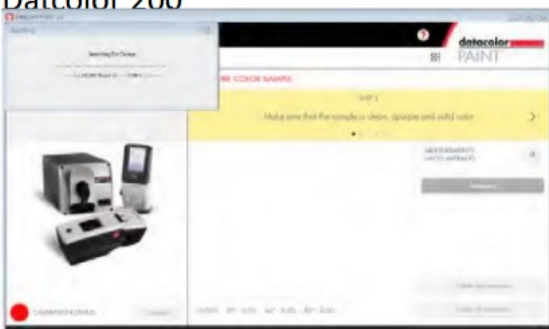
Step 2:

Click **Custom Match**



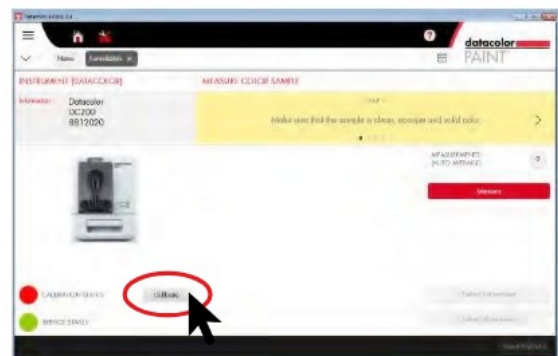
Step 3:

Wait a moment for PAINT v. 2.x to find your Datacolor 200



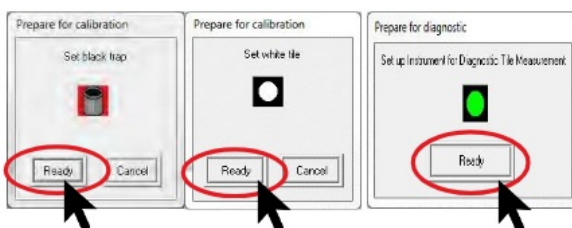
Step 4:

Click 'Calibrate'.



Step 5:

Place the **Black Trap**, on your Spectro and hold, Click 'Ready'. Place the **White Tile** on the spectro, Click **Ready**. Finally, place the **Green Tile** on the spectro, Click **Ready**.



Step 6:

Your Datacolor 200 is ready to match colors!



DC 20D Setup

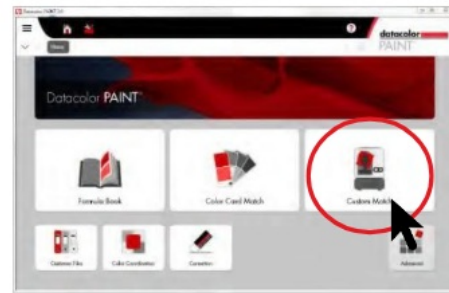
Step 1:

Connect your 20D with the supplied USB Cable.



Step 2:

Click **Custom Match**



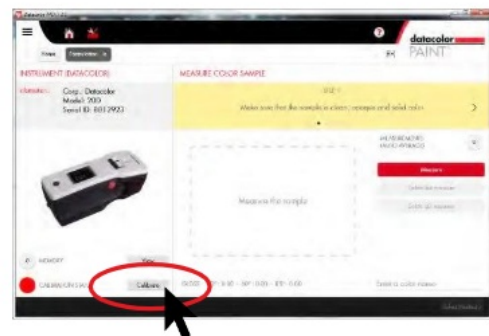
Step 3:

Wait a moment for PAINT v. 2.x to find your Datacolor 20D.



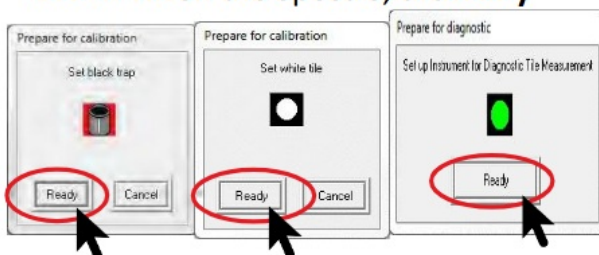
Step 4:

Click "**Calibrate**"



Step 5:

Place the **Black Trap** on your Spectro and hold. Click **Ready**. Place the **White Tile** on the Spectro, click **Ready**. Finally, place the **Green Tile** on the Spectro, click **Ready**.



Step 6

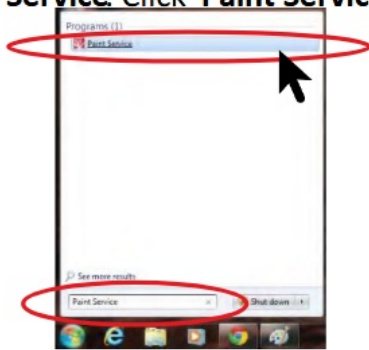
Your Datacolor 20D is ready to match colors! Click **View** to see all of the samples stored on your instrument or click **Measure** to measure with your 20D.



Step 4 – Import Custom Formulas (Initial Installation only)

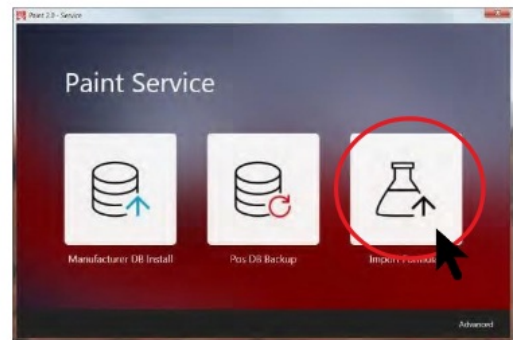
Step 1:

Click **'Start'**, then type in the search bar **'Paint Service'**. Click **'Paint Service'**



Step 2:

Click **'Import Formulas'**



Step 3:

Click **'Browse'**.

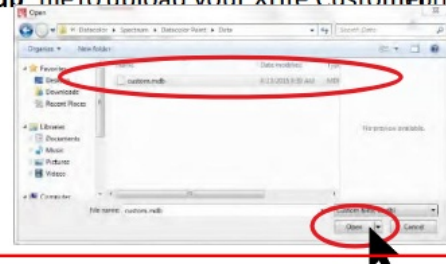
(Note: If your previous customer files are on a separate computer, you may find the location of your files in step 4. Once you have loaded your files onto the USB, plug into the system with Paint 2.x Software and search for the file)



Step 4:

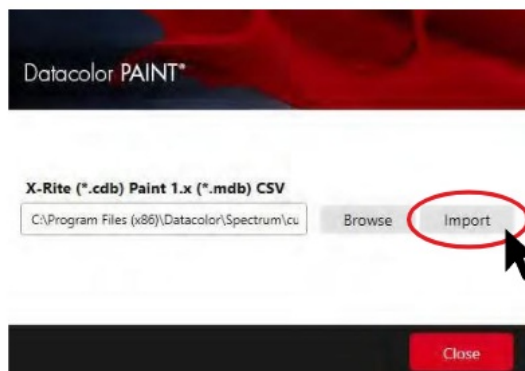
Go to this file to find your **Datacolor Customer Formulas C:\Program Files (x86)\Datacolor\Spectrum\Datacolor Paint Data**. Click on **'custom.mdb'**, click **'Open'**.

If you used **Xrite Color Designer** previously, look for a **'*.cdl'** file to upload your Xrite Custom Formulas.



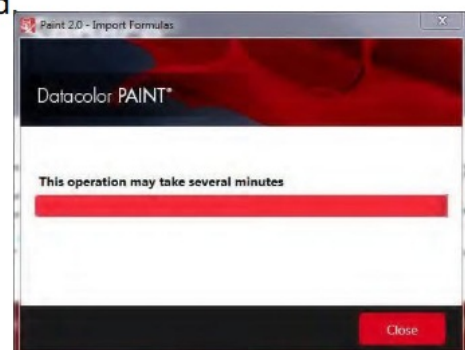
Step 5:

Click **'Import'**.



Step 6:

This process will take several minutes to load



Contents [[hide](#)]

1 Documents / Resources



1.1 References

Documents / Resources

	datacolor DC200R Datacolor Paint [pdf] Installation Guide DC200R, DC20D, DC200R Datacolor Paint, DC200R, Datacolor Paint, Paint
---	--

References

- [User Manual](#)

 datacolor, Datacolor Paint, DC200R, DC200R Datacolor Paint, DC20D,
 datacolor Paint

Leave a comment

Your email address will not be published. Required fields are marked *

Comment *

Name

Email

Website

☐ Save my name, email, and website in this browser for the next time I comment.

Post Comment

Search:

e.g. whirlpool wrf535swhz

Search

[Manuals+](#) | [Upload](#) | [Deep Search](#) | [Privacy Policy](#) | [@manuals.plus](#) | [YouTube](#)

This website is an independent publication and is neither affiliated with nor endorsed by any of the trademark owners. The "Bluetooth®" word mark and logos are registered trademarks owned by Bluetooth SIG, Inc. The "Wi-Fi®" word mark and logos are registered trademarks owned by the Wi-Fi Alliance. Any use of these marks on this website does not imply any affiliation with or endorsement.