



DARTWOOD Wireless N WiFi Extender User Manual

[Home](#) » [DARTWOOD](#) » DARTWOOD Wireless N WiFi Extender User Manual

Contents [[hide](#)]

- [1 DARTWOOD Wireless N WiFi Extender](#)
- [2 In the Box](#)
- [3 Introduction to Parts](#)
- [4 Installation](#)
- [5 Troubleshooting](#)
- [6 Specifications](#)
- [7 Documents / Resources](#)
 - [7.1 References](#)
- [8 Related Posts](#)

DARTWOOD

DARTWOOD Wireless N WiFi Extender



In the Box

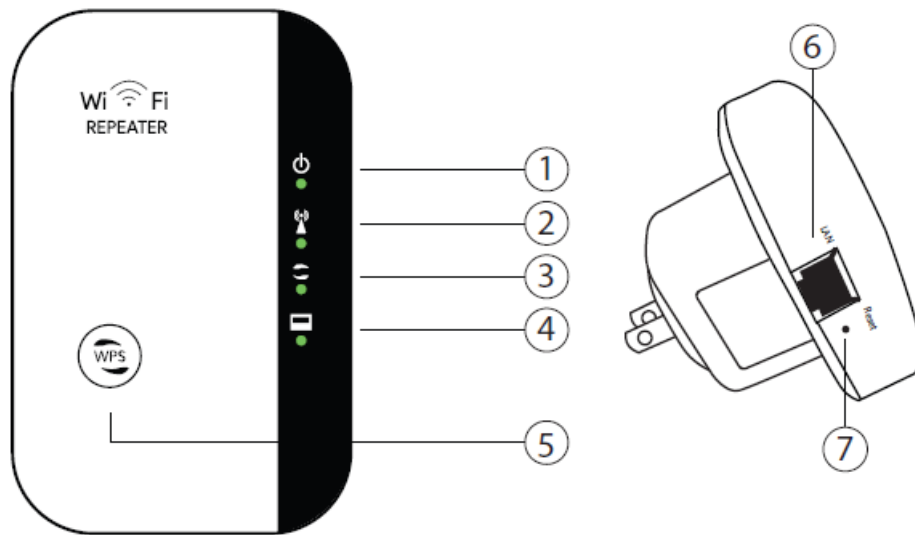


1 x WiFi extender



1 x LAN cable (RJ45)

Introduction to Parts



1. Power indicator
2. WLAN indicator
3. WPS indicator
4. LAN indicator
5. WPS button
6. LAN port
7. Reset button

Preparation

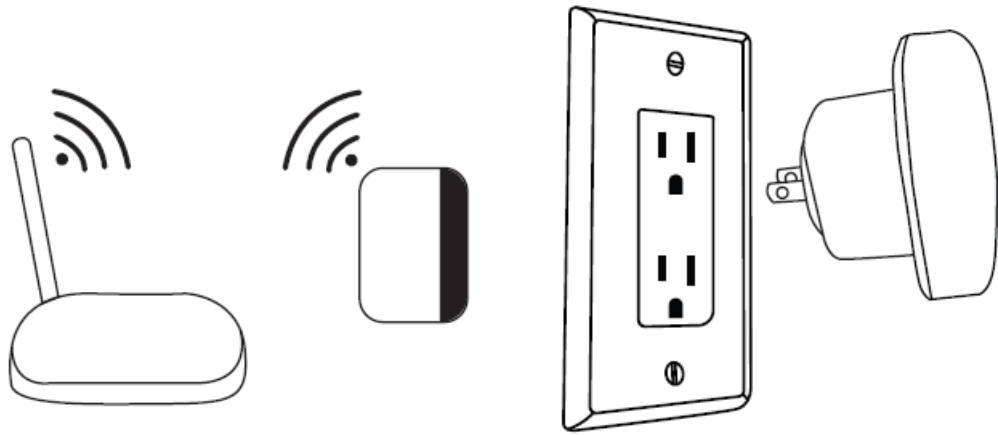
- Prepare the current wireless network password for setup.
- Make sure your current router works properly and supports a 2.4 GHz network.
- You will need a WiFi-supported device to set up the extender, such as a smartphone or laptop.

Installation

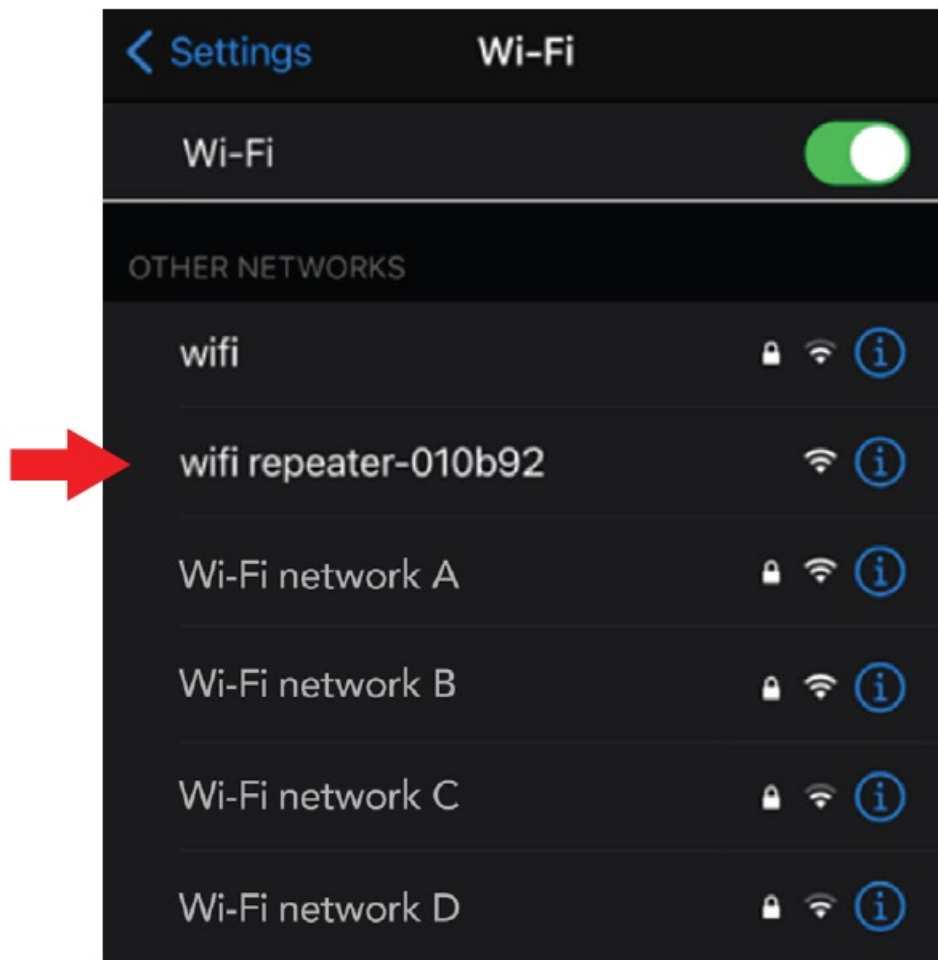
Note:

This device is intended to extend your wireless network coverage. It does not help to improve the speed. The network speed is limited by the original network and depends on different factors, such as signal strength, distance, obstacles, etc.

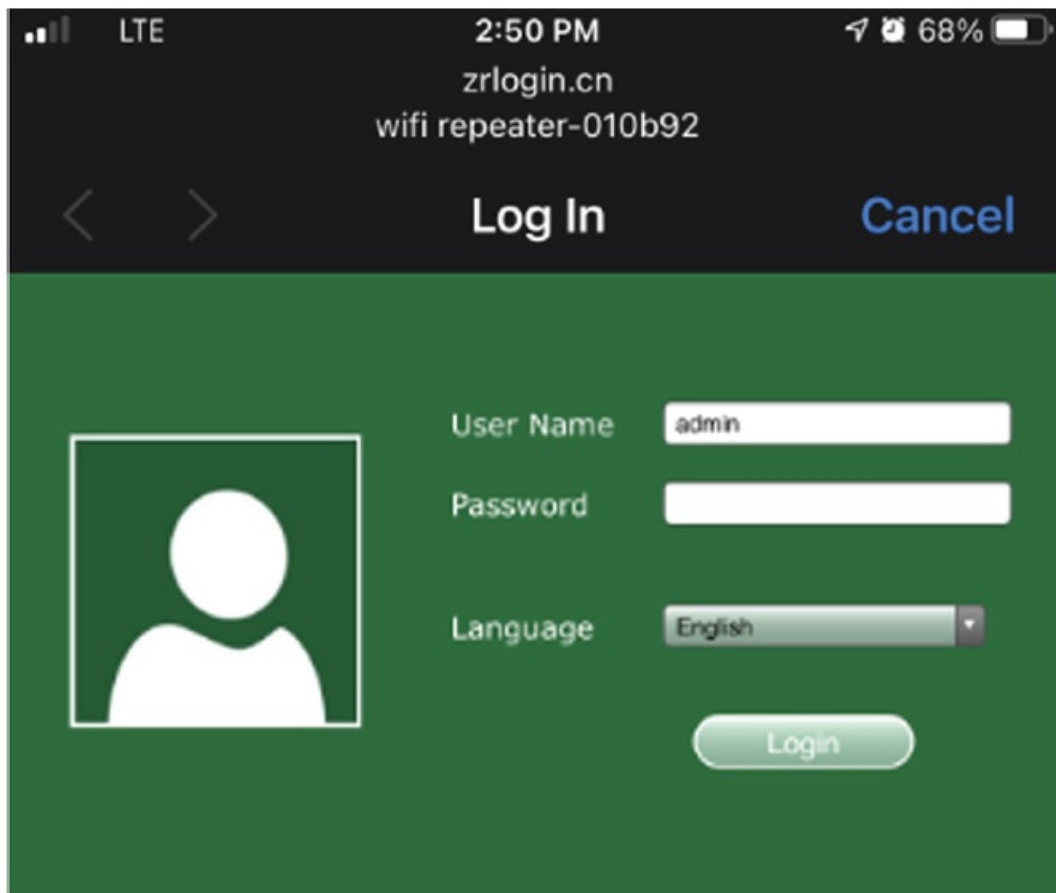
1. To set up, plug in your WiFi extender close to your wireless router. Wait for the power indicator to turn solid green.



2. Search the WiFi network on your device named "wifi repeater-xxxxxx", then connect to the extender network. If you can't find the extender, reset the extender by using a pin to press the reset button and try again.



3. A login page will show up automatically. You can also manually visit the login page from the web browser via: <http://192.168.11.1> or <http://myrepeater.net> (Note: be sure your device is connected to the extender network when logging in).



4. The default login details are as follows, in all lower-case letters

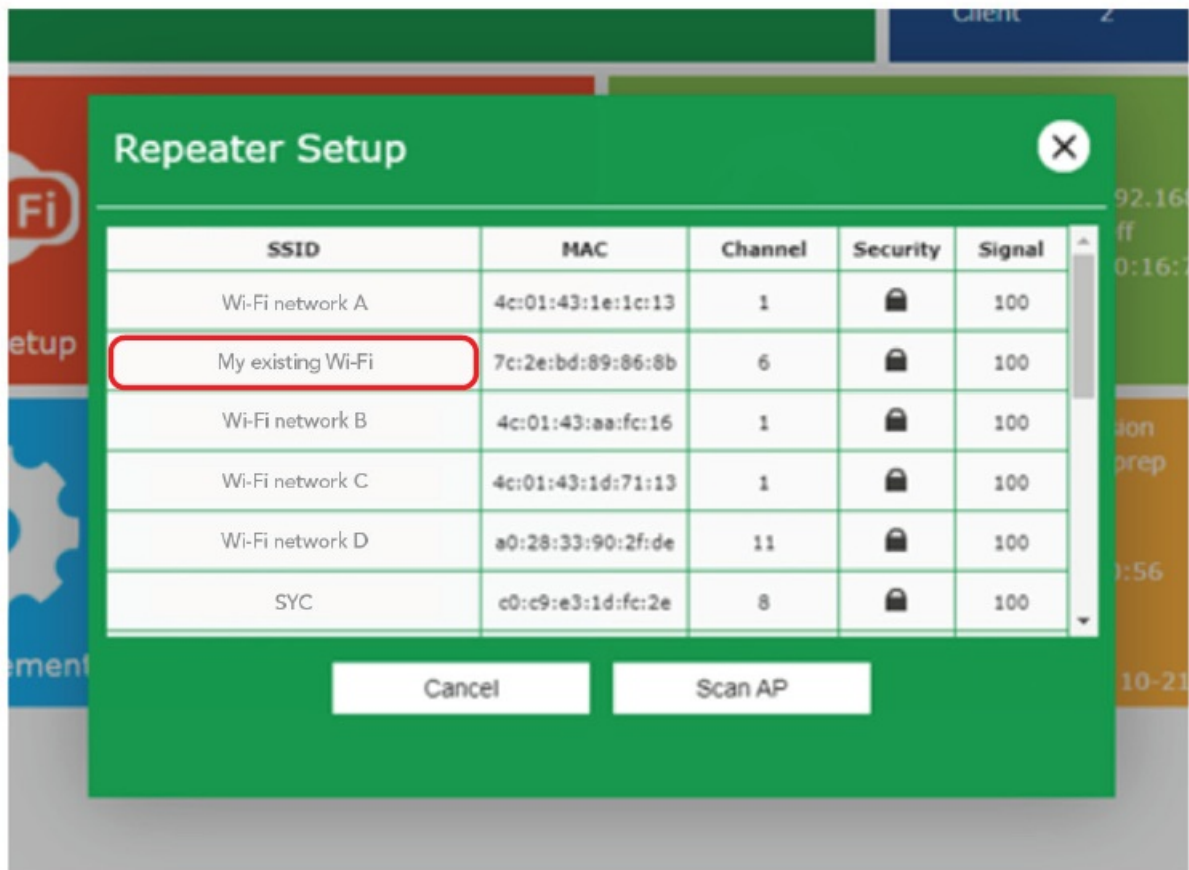
User name:	admin
Password:	admin

5. Once logged in, you will enter the configuration page as follows, click the “Repeater mode” to continue the setup.

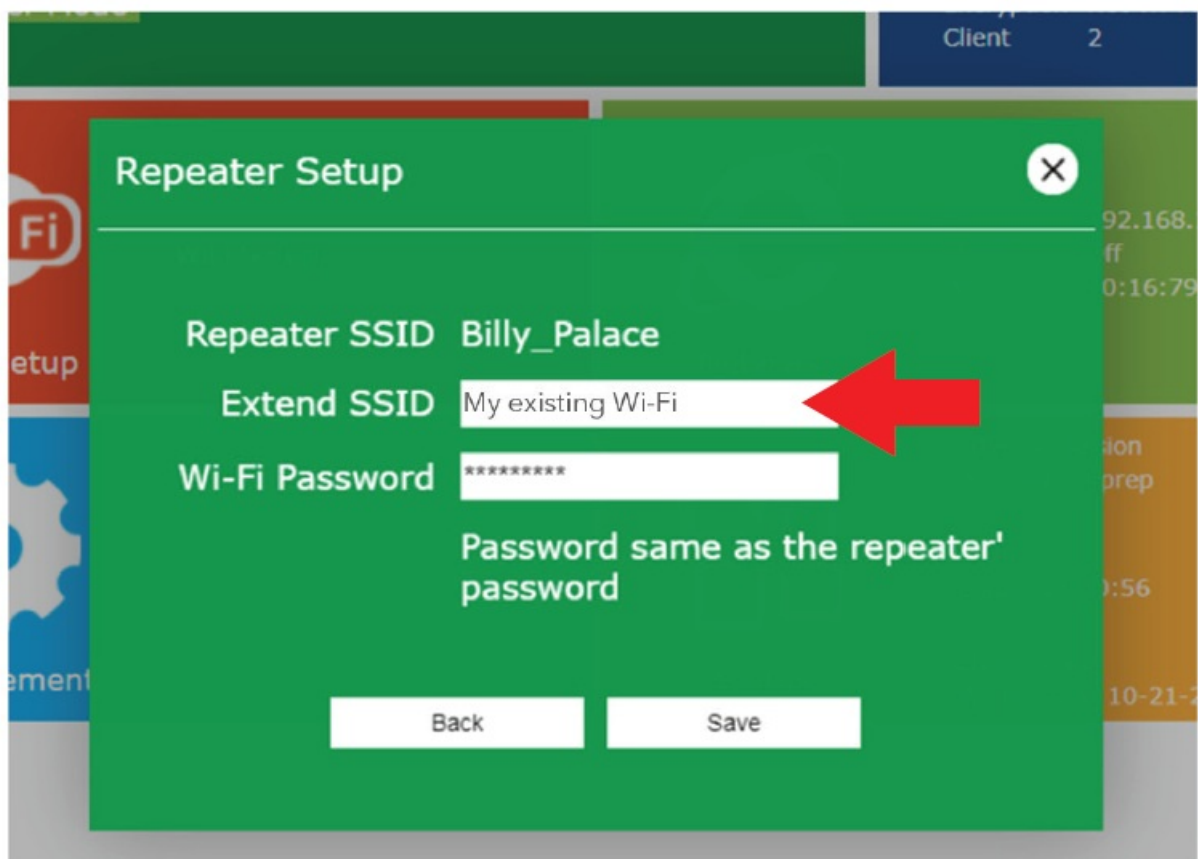


6. Wait a moment to scan the wireless network nearby. Then, select your existing wireless network from the list

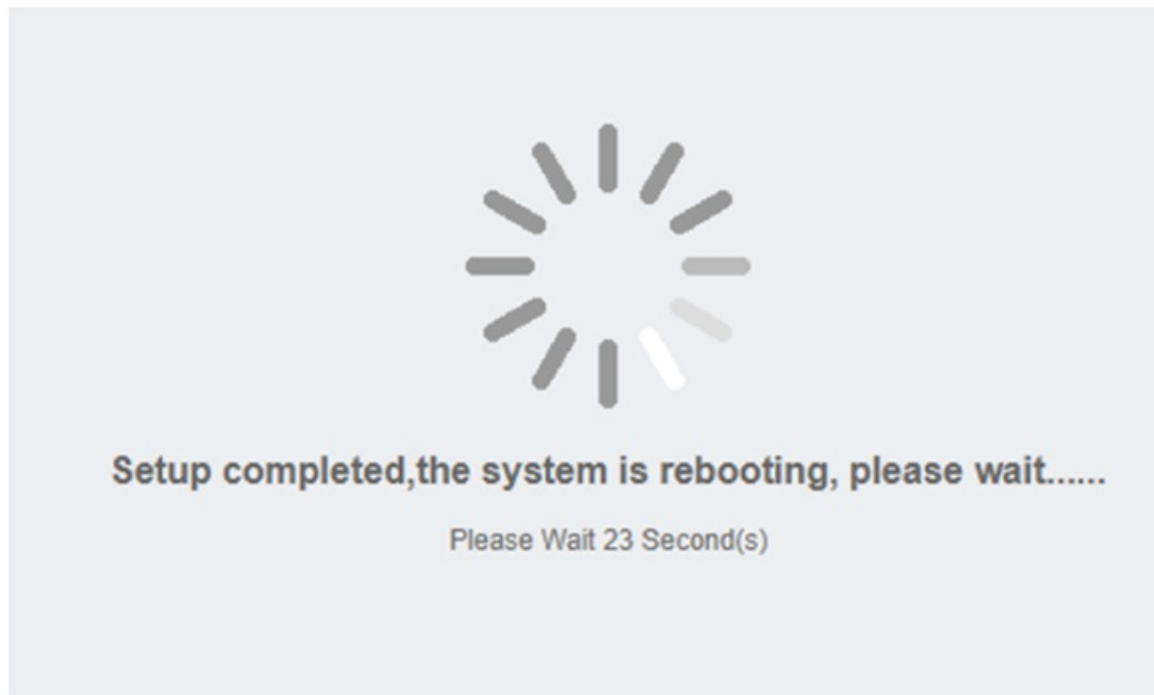
and click “Scan AP” to refresh the list if you cannot find your existing WiFi network.



7. Next, enter the password of your existing network and the name for the extender, then click “Save”. (Note: make sure you enter the correct password, otherwise the extender may not be able to connect to your wireless network.)

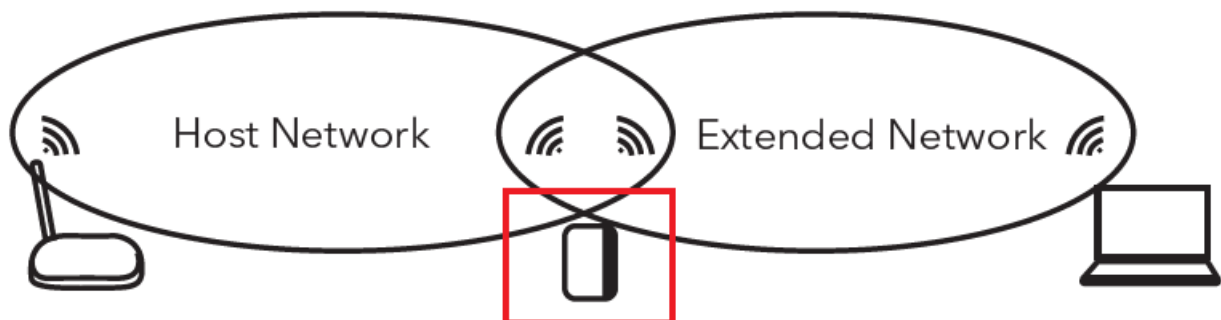


8. The extender setup is complete and will reboot to the name you set. You may connect to the Extender SSID now, use the same password from the original network to log in.



Relocate

Once the setup is complete, you may relocate the WiFi extender in between the wireless router and the place you will use it, in order to extend the coverage. Wait for the WLAN indicator to turn solid green, then the network is ready to use. Plug in the extender halfway between your router and the WiFi dead zone. Wait for the WLAN LED to blink and the device is ready to connect.

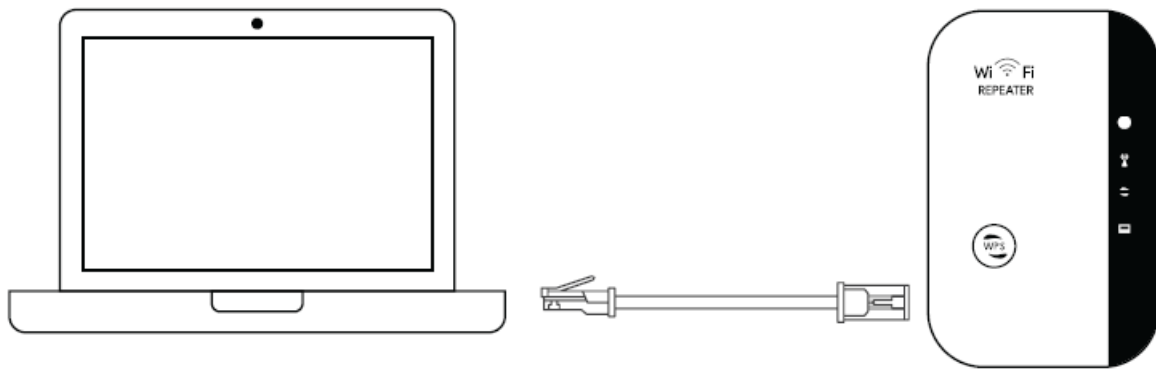


Factory reset

To reset to factory settings, use a pin to press the reset button for at least 8 seconds. Wait for the WLAN indicator switch off and turn solid green again. The device will show up as "wifi repeater-xxxxxx" on the available WiFi network on your device list.

Connect via LAN cable

Follow the installation instructions 1 – 7, then connect your device to the LAN cable provided. The network is ready once the LAN indicator is solid green.



Connect via WPS button

WPS is a faster method to connect your extender to the WiFi network. Make sure your router supports WPS and has a button similar to the following icons. Press the button on your router and then the extender within a short period of time. Wait until you see the “xxxxxx_ext” on your nearby network, which means that the setup is complete. The password is the same as your original router.



Troubleshooting

Problem	Possible solution
I cannot find the extender from the WiFi network.	Make sure the extender is powered on and the WLAN indicator is solid green. Try to factory reset the extender if you cannot search for the device.
I cannot log in to the settings page.	Make sure the login and password is correct. Try to reset the device and try again.
I cannot load the login page properly.	Your device may not be compatible, try again using another device, such as a laptop or smartphone.
I cannot scan the original WiFi network from the list.	Make sure the extender and your WiFi router are in range.
I cannot connect to the network or my WiFi password is not correct.	Double-check the password of your original router network and reset the extender.
I tried all of the above but still cannot set up my extender network.	Please contact our customer service for further assistance.

Specifications

- Signal rate:
- Frequency range:
- Security type:

- Antenna:
- Product dimension:
- Weight:
- enhancements.
- Up to 300 Mbps
- 2.4 – 2.4835 GHz
- WEP, WPA, WPA2, WPA/WPA2
- Internal antenna
- 4.33 x 2.36 x 2.75 in
- 3.46 oz


*Specifications are subject to change without notice due to factory enhancements.

Get More Support

Scan the QR code below or email us at: contact@wasserstein-home.com



Documents / Resources

<div> <div>Wireless-N WiFi Extender</div> <div>User Manual</div> <div>  </div> <div>DARTWOOD</div> </div>	<div> <div> DARTWOOD Wireless N WiFi Extender [pdf] User Manual </div> <div> Wireless N WiFi Extender, Wireless N, Wireless N Extender, WiFi Extender, Extender </div> </div>
--	---

References

-  [Fairway Independent Mortgage Corporation](#)