



# DARTWOOD B09YM2V8LX Cordless Oral Irrigator User Manual

[Home](#) » [DARTWOOD](#) » DARTWOOD B09YM2V8LX Cordless Oral Irrigator User Manual 



# DARTWOOD

Cordless Oral Irrigator

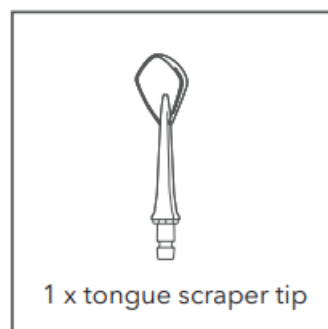
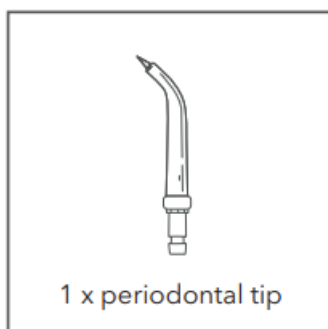
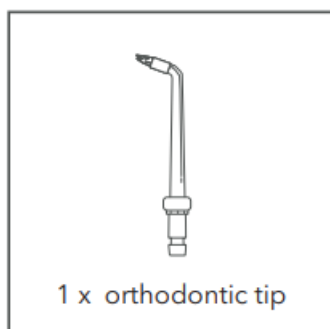
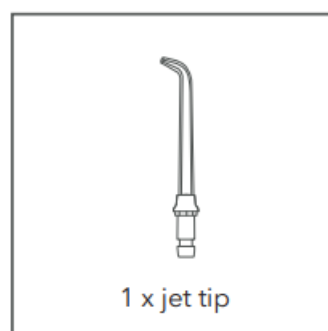
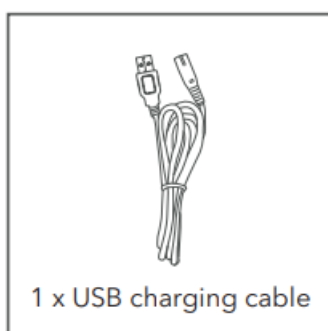
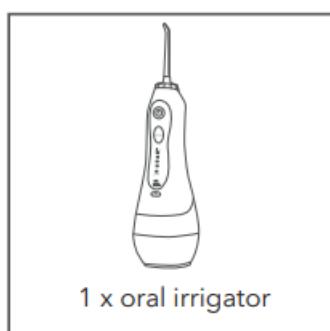


User Manual

## Contents

- 1 In the Box
- 2 Introduction to Parts
- 3 How to Use
- 4 Using the Tips
- 5 Troubleshooting
- 6 Reminders
- 7 Specifications
- 8 Get More Support
- 9 Documents / Resources
  - 9.1 References
- 10 Related Posts

## In the Box



### IMPORTANT NOTE:

When using electrical products, especially when children are present, basic safety precautions should always be followed:

**READ ALL INSTRUCTIONS BEFORE USING.**

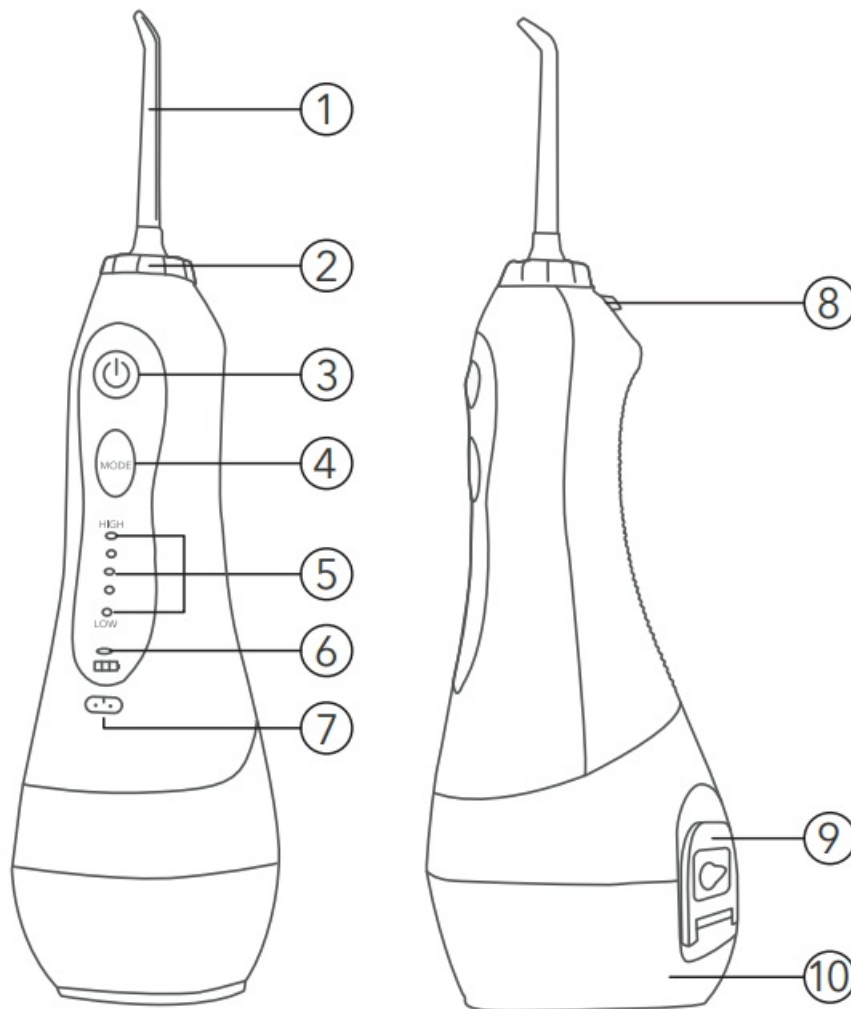
### DANGER:

To reduce the risk of electrocution:

- Dry your hands thoroughly before handling the charger.
- Never place or drop the charger into water or any other liquid.
- Always check the charger cord for damage before using.
- Use this product only as indicated in these instructions or as recommended by your dental professional.
- Only use tips and accessories that are recommended.
- Do not drop or insert any foreign object into any opening on the product.
- Keep charging unit and cord away from heated surfaces.
- Do not use this product outdoors or operate where aerosol (spray) products are being used or where oxygen is being administered.

- Do not use iodine, saline (salt solution), or water insoluble concentrated essential oils on this product. Use of these can reduce performance and will shorten the life of the product. Use of these liquids may void warranty.
- Fill reservoir with water or other dentist recommended solutions only.
- Remove any oral jewelry prior to use of this product.

## Introduction to Parts



1. Nozzle tip
2. Tip rotation dial
3. Power button
4. Pressure mode button
5. Mode indicator lights
6. Charging indicator light
7. Charging port
8. Tip release button
9. Water tank cap
10. Water tank

## Maintenance:

1. Dispose of any water inside the tank.

2. Run the appliance for 2 – 3 seconds to drain any remaining water.
3. Wipe the exterior with a soft cloth/non-abrasive cleanser (reservoir can be washed with soapy water).
4. Clean the dirt from the inside using a small brush, then wipe with a soft cloth.
5. Dry thoroughly before storage.

**Battery Care and Disposal:**

The unit contains a lithium battery and it is non-replaceable. At the end of the battery life, recycle the unit as per your local or state requirements.

**Note:**

If excess heat is detected, machine will automatically stop. Switch the machine off, let it cool for 2 hours, and then restart.

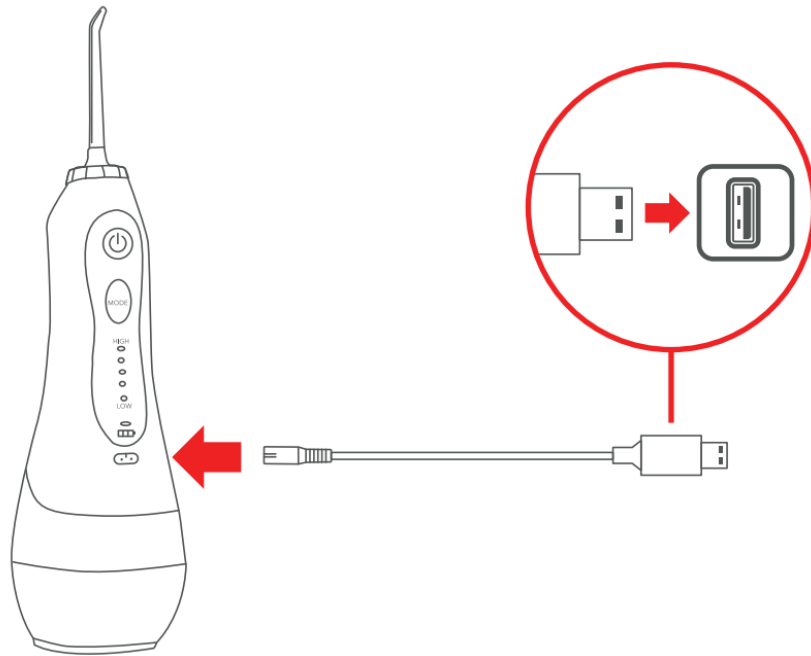
**Warning**

To reduce the risk of burns, electrocution, fire, or injury:

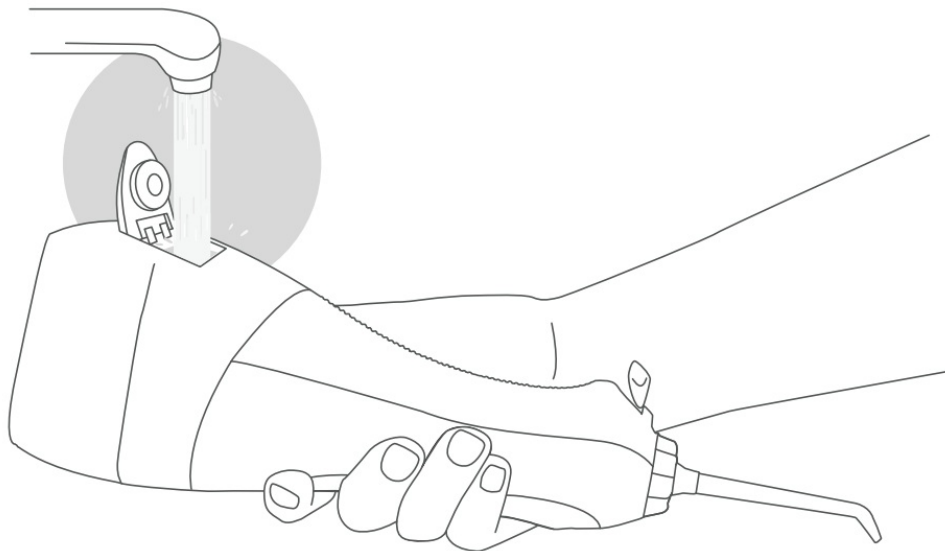
- Do not plug this device into a voltage system that is different from the voltage system specified on the device or charger.
- Improper voltage will damage product and void warranty.
- Opening or disassembling this device for any reason will void warranty.
- Do not use this product if it has a damaged cord or plug, isn't working properly, has been damaged, or has been dropped into water.
- Do not direct water under the tongue, into the ear, nose, or other delicate areas. High pressure from this product can cause serious damage to sensitive areas.
- Do not direct water into the nose or ear.
- Consult your dentist before using this instrument or any other oral hygiene aid.
- Close supervision is necessary when this product is used by, on, or near children.

**SAVE THESE INSTRUCTIONS.****How to Use**

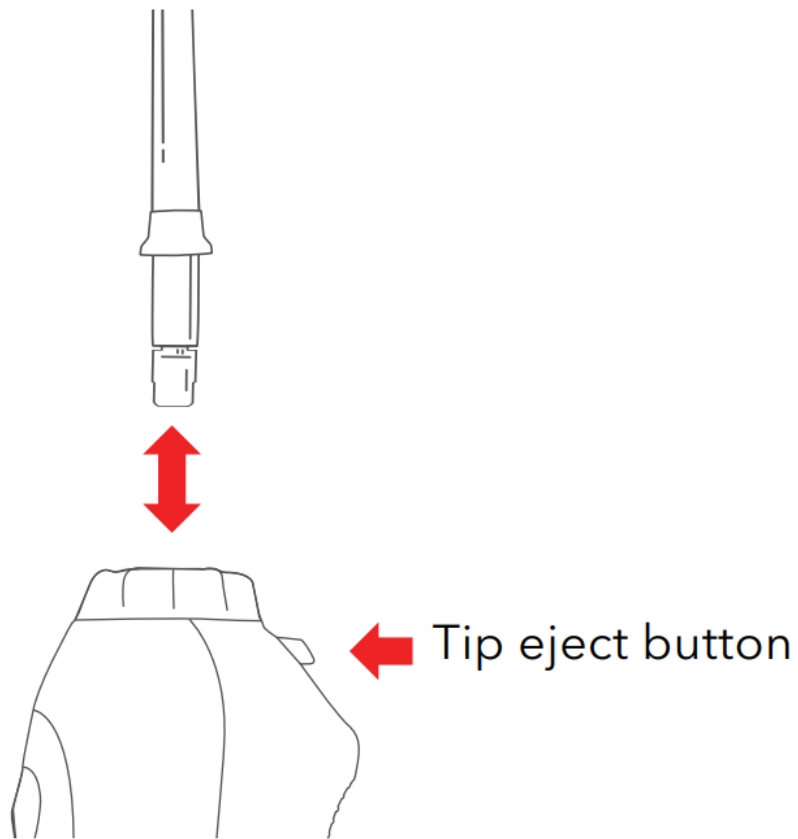
1. Fully charge for 3 – 5 hours before using (charging indicator will flash when charging and stay on continuously when fully charged).



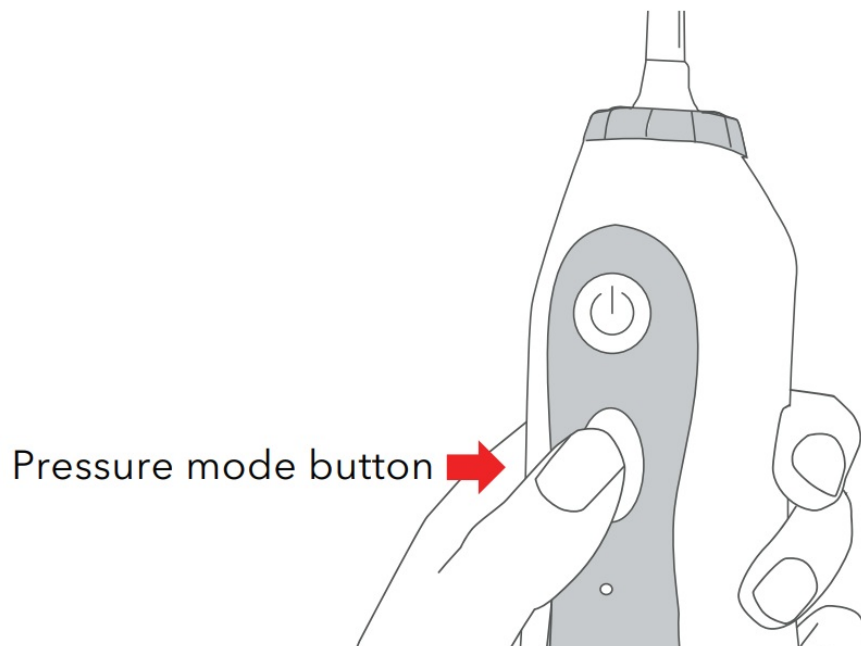
2. Lift up the top on the reservoir and fill with water (room-temperature).



3. Insert the tip into the top of the irrigator handle. Press firmly until it clicks into place. To remove, press the tip eject button on the handle (never press the tip eject button while unit is running).



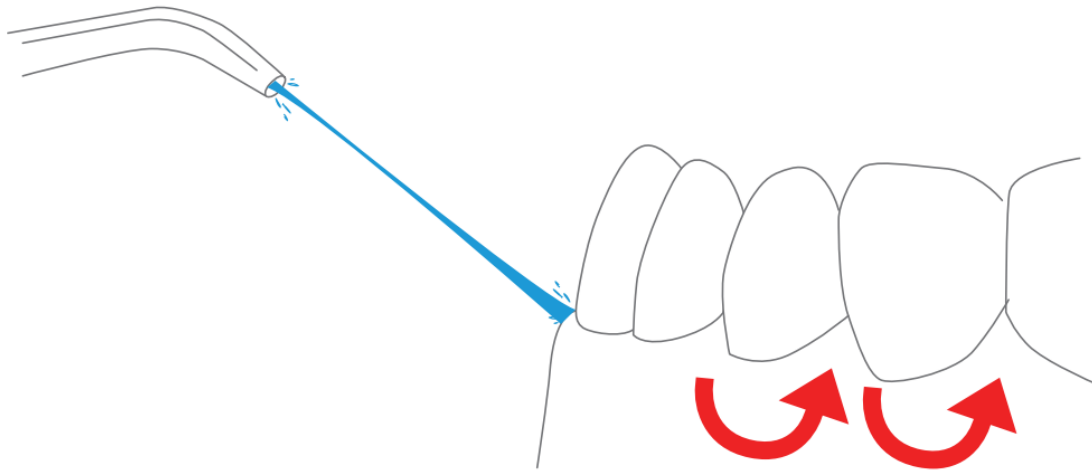
4. Adjust the pressure to your liking by pressing the pressure mode button on the handle.



## Using the Tips

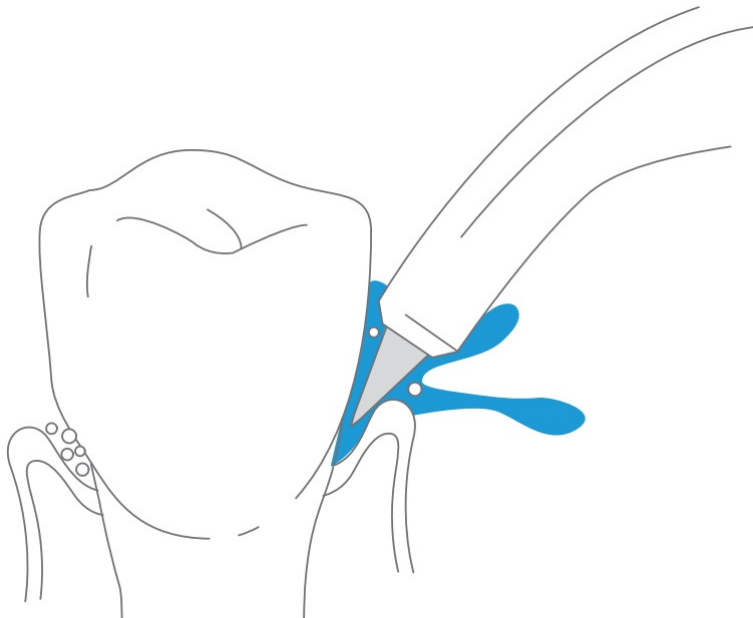
### Jet Tip

Guide the jet toward your teeth and gums at a 90° angle. Slowly move it along each tooth.



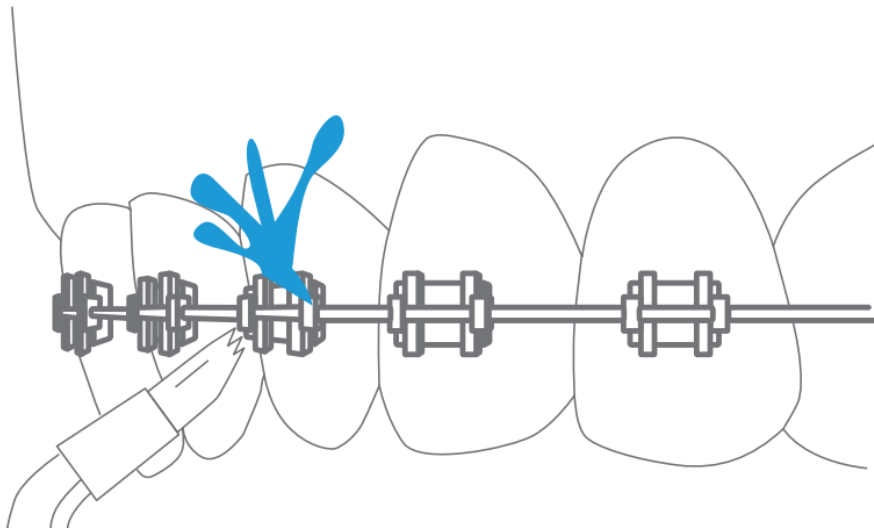
### **Periodontal Tip**

Place the periodontal tip at your teeth and gum line at 45° angle. Start the irrigator setting at its lowest pressure and gently move along the teeth and gum line.



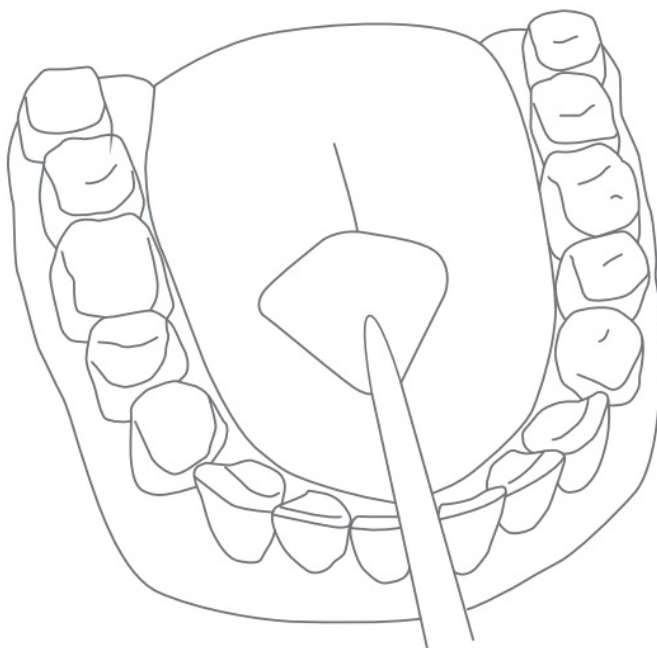
### **Orthodontic Tip**

Use the orthodontic tip for hard to reach areas around braces, crowns, bridges, or implants. Place tip at a 90° angle, starting at the back and gently moving to each tooth along the gum line. Pause briefly to lightly brush before moving on to the next tooth.



### Tongue Cleaner Tip

Lean your head over the sink. Set to the lowest pressure. Start at the back of the tongue and gently move forward to clean your whole tongue.



### Troubleshooting

Problem	Cause	Corrective action
Reservoir leaks	Seal ring is abnormal	Remove the seal ring and reinstall
Low water pressure	Low battery	Recharge the device
	Nozzle tip blocked	Replace with new nozzle tip
Lasts only few minutes with full charge	Dead battery	Contact retailer
	Damaged charging cable	Try with new charging cable
	Broken adapter	Try with new adapter
Motor makes a sound but no water is coming out	Nozzle tip blocked	Replace with new nozzle tip
	Suction valve dislocation	Keep device on, fill water to K the hole for the nozzle tip
Motor doesn't make a sound	Low battery (the device has been idle for more than 3 months)	Activate the battery by recharging it for 16 hours
Product stopped working suddenly	Overheating protection is activated (continuous use with 5 or more tanks of water on the highest pressure)	Turn off and wait 2 hours before restarting

If the problem still persists, contact our customer service for assistance.

### Reminders

If left unused for a long time, the nozzle tip may not spray water immediately. Please try the following:

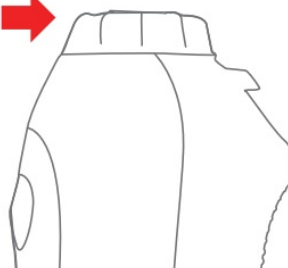


1. Add the proper amount of water into the hole for the tip.

Then, insert the tip and press the power button to turn on the device.

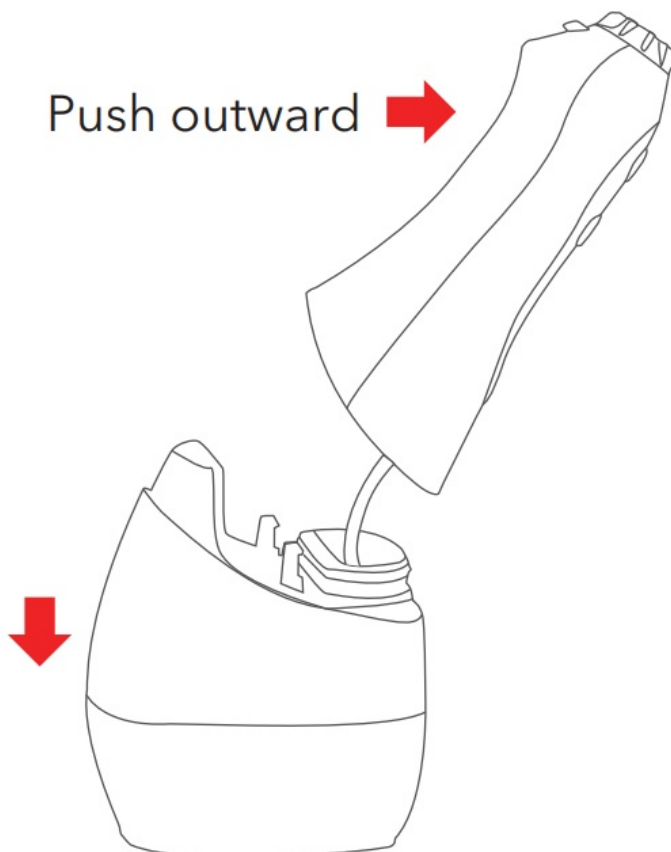


Add water here →



2. Detach the water tank by pulling on it, then reset it.

Push outward →



## Specifications

Input:	DC 5V 1A
Output:	3.7 V
Charging time:	3 – 5 hrs
Material:	ABS, PC
Waterproof level:	IPX7
Reservoir capacity:	10 fl oz
Water flow method:	pulsating

## Get More Support

Scan the QR code below or email us at: [contact@wasserstein-home.com](mailto:contact@wasserstein-home.com)





<https://qrco.de/bcN3bf>



[www.wasserstein-home.com](http://www.wasserstein-home.com)

Made in China

## Documents / Resources

<div><div>Cordless Oral Irrigator</div><div>User Manual</div><div></div><div></div></div>	<div><div><a href="#">DARTWOOD B09YM2V8LX Cordless Oral Irrigator</a> [pdf] User Manual</div><div>B09YM2V8LX Cordless Oral Irrigator, B09YM2V8LX, Cordless Oral Irrigator, Oral Irrigator, Irrigator</div></div>
---	--

References

-  [Fairway Independent Mortgage Corporation](#)