

Danfoss

**VRB 2
Series Port
Control
Valves**



Danfoss VRB 2 Series Port Control Valves Installation Guide

[Home](#) » [Danfoss](#) » Danfoss VRB 2 Series Port Control Valves Installation Guide 

Contents

- [1 Danfoss VRB 2 Series Port Control Valves](#)
- [2 Product Usage Instructions](#)
- [3 FAQs](#)
- [4 Documents / Resources](#)
 - [4.1 References](#)

Danfoss

Danfoss VRB 2 Series Port Control Valves



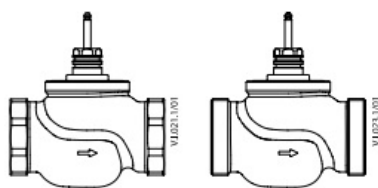
Specifications:

- Product Models: VRB 2, VRB 3, VRG 2, VRG 3, VF 2, VF 3, VL 2, VL 3
- Available Sizes: DN 15-80
- Pressure Rating:
 - VRB, VRG: PN 6 (EN-GJL-250 GG-25)
 - VL: PN 16 (CuSn5Zn5Pb5 Rg5)
 - VF, VRG: PN 16 (EN-GJL-250 GG-25)

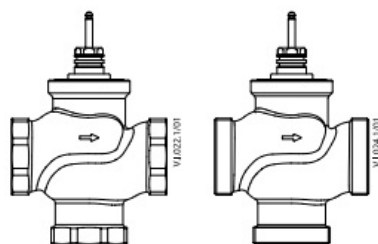
Product Usage Instructions

Installation Guide for VRB 2, VRB 3, VRG 2, VRG 3, VF 2, VF 3, VL 2, VL 3:

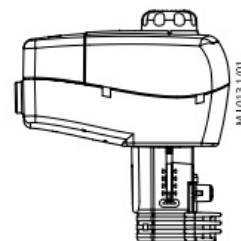
Follow the specific installation instructions provided for each model. Ensure proper sizing and pressure compatibility.



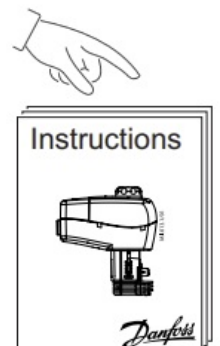
VRB 2, VRG 2 (DN 15-50)

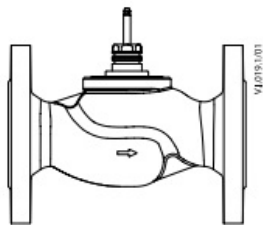


VRB 3, VRG 3 (DN 15-50)

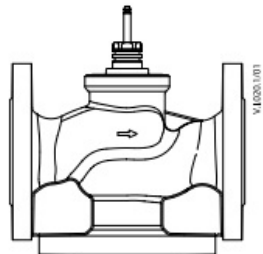


AMV(E) 335, 435, 438 SU

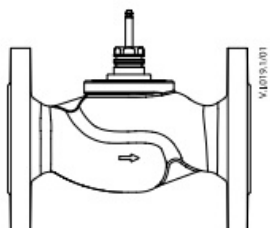




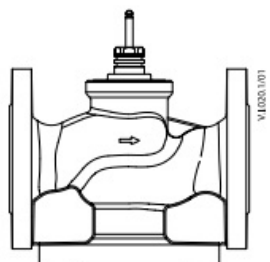
VF 2, VL 2 (DN 15-80)



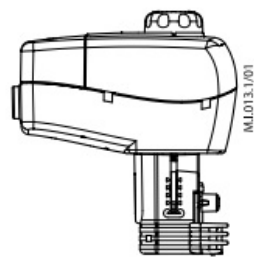
VF 3, VL 3 (DN 15-80)



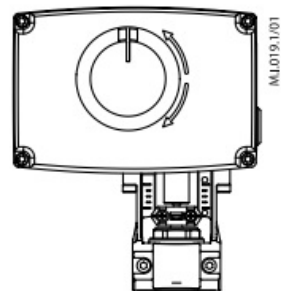
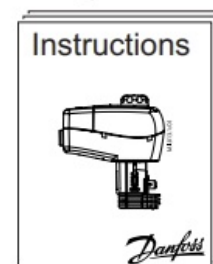
VF 2, VL 2 (DN 15-50)



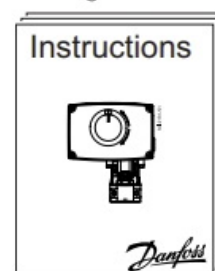
VF 3, VL 3 (DN 15-50)

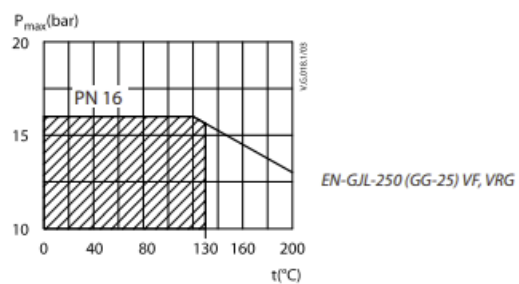
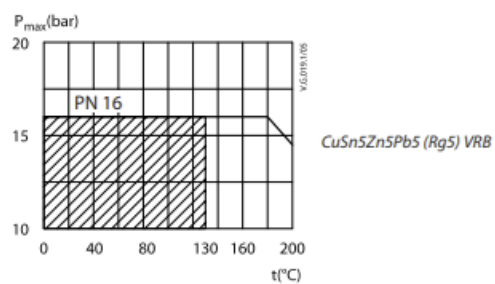
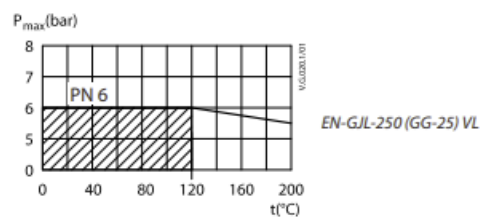
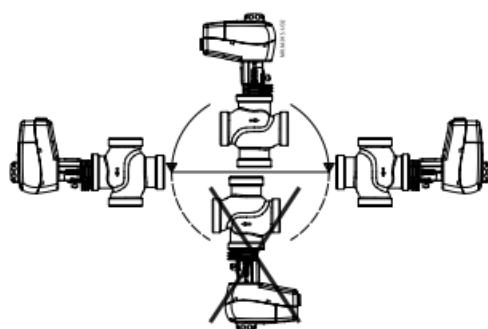
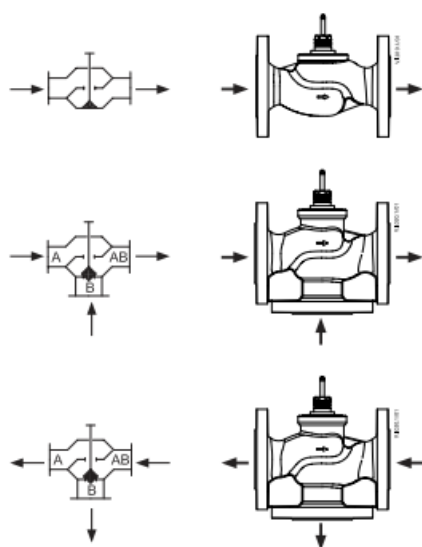
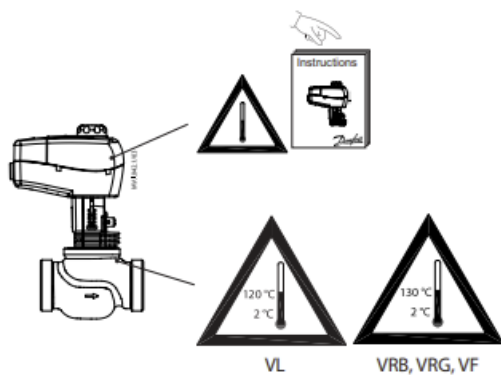


AMV(E) 335, 435

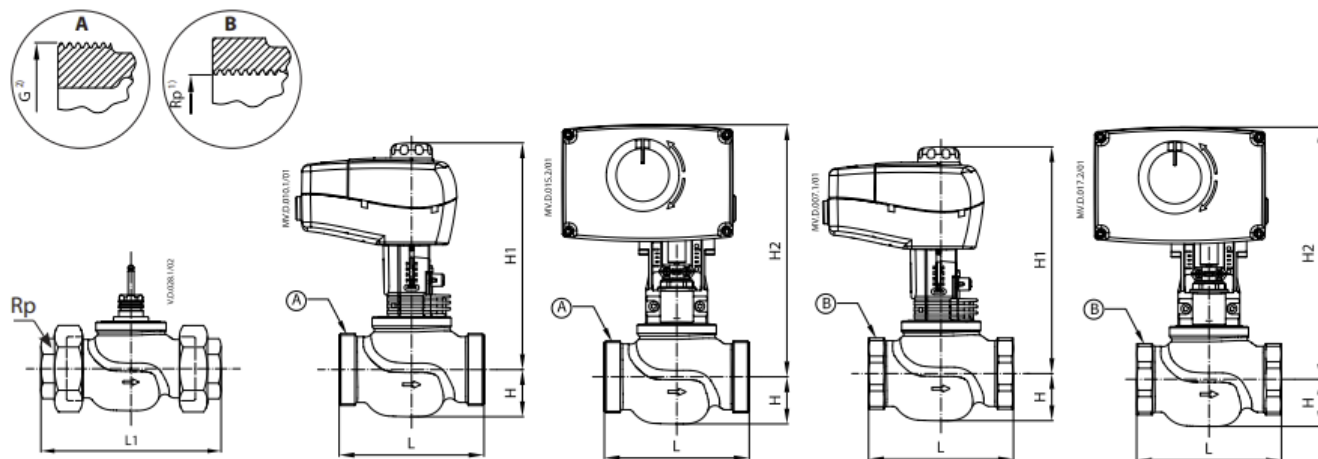


AMV(E) 438 SU





VRB 2, VRG 2 + AMV(E) 335, 435, 438 SU

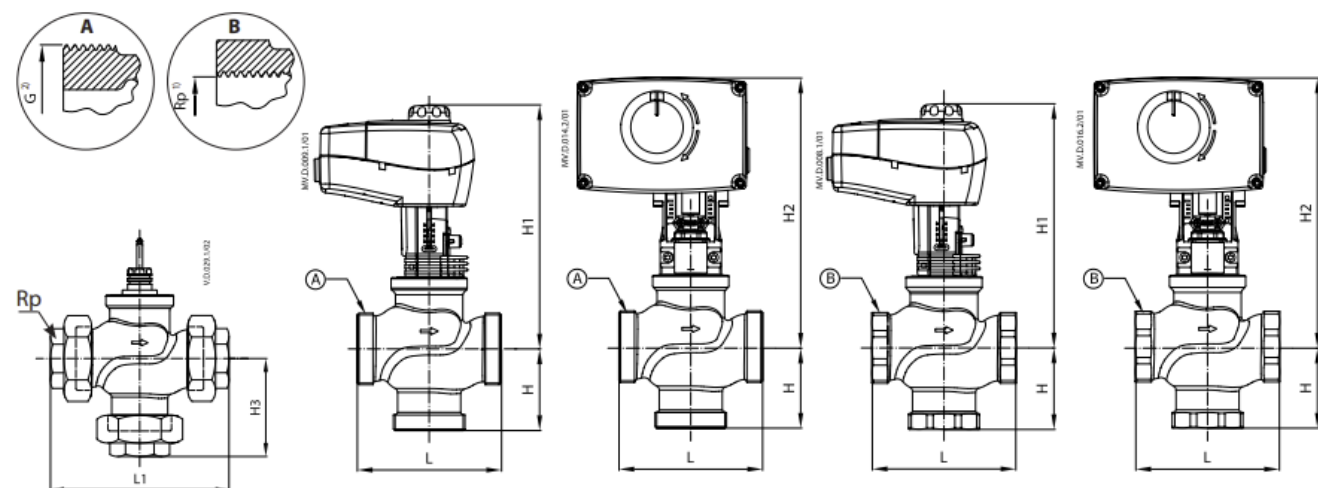


Type	DN	Rp ¹⁾	G ²⁾	L	H	H1	H2	L1
VRB 2 VRG 2	15	½	1	80	25	217	237	128
	20	¾	1¼	80	29	223	243	128
	25	1	1½	95	29	227	247	151
	32	1¼	2	112	35	238	258	178
	40	1½	2¼	132	43	252	272	201
	50	2	2¾	160	47	261	281	234

¹⁾ Rp EN 10226-1

²⁾ G DIN ISO 228/01

VRB 3, VRG 3 + AMV(E) 335, 435, 438 SU

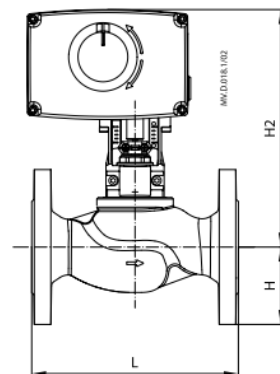
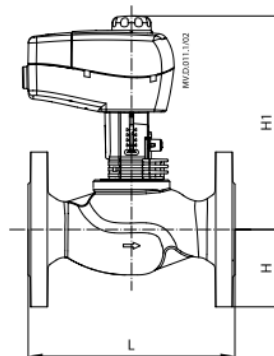
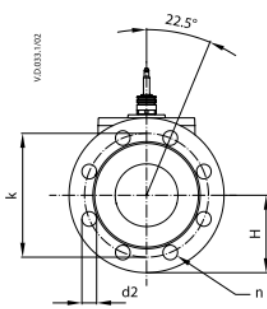
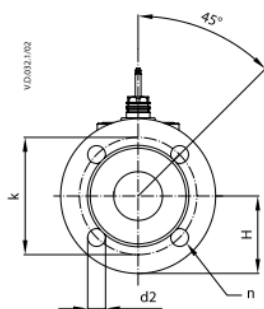


Type	DN	Rp ¹⁾	G ²⁾	L	H	H1	H2	L1	H3
VRB 3 VRG 3	15	½	1	80	40	232	252	128	64
	20	¾	1¼	80	45	239	259	128	69
	25	1	1½	95	50	248	268	151	78
	32	1¼	2	112	58	261	281	178	91
	40	1½	2¼	132	75	302	322	201	110
	50	2	2¾	160	83	322	342	234	120

¹⁾ Rp EN 10226-1

²⁾ G DIN ISO 228/01

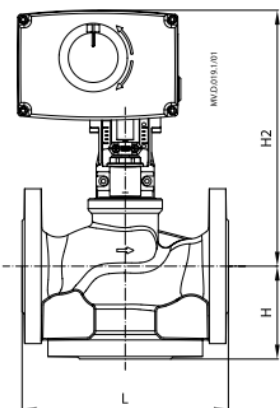
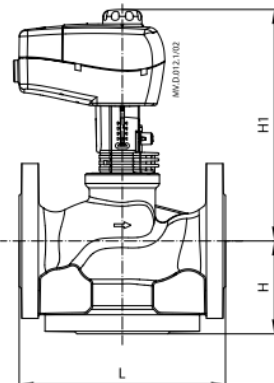
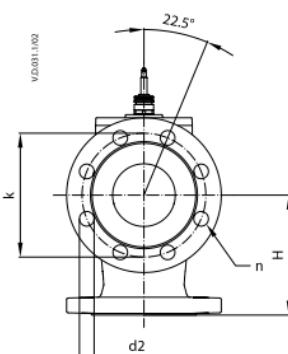
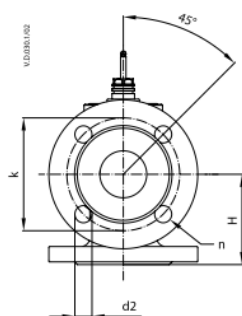
VF 2, VL 2 + AMV(E) 335, 435, 438 SU



Type	DN	L	H	H1	H2	k	d2	n
VF 2	15	130	48	193	213	65	14	4
	20	150	53	195	215	75	14	4
	25	160	58	199	219	85	14	4
	32	180	70	203	223	100	19	4
	40	200	75	209	229	110	19	4
	50	230	83	215	235	125	19	4
	65	290	93	250	-	145	19	4
	80	310	100	253	-	160	19	8

Type	DN	L	H	H1	H2	k	d2	n
VL 2	15	130	40	193	213	55	11	4
	20	150	45	195	215	65	11	4
	25	160	50	199	219	75	11	4
	32	180	60	203	223	90	14	4
	40	200	65	209	229	100	14	4
	50	230	70	215	235	110	14	4
	65	290	80	250	-	130	14	4
	80	310	95	253	-	150	19	4

VF 3, VL 3 + AMV(E) 335, 435, 438 SU



Type	DN	L	H	H1	H2	k	d2	n
VF 3	15	130	63	192	213	65	14	4
	20	150	70	194	215	75	14	4
	25	160	75	198	219	85	14	4
	32	180	80	203	223	100	19	4
	40	200	90	227	247	110	19	4
	50	230	100	239	259	125	19	4
	65	290	120	245	-	145	19	4
	80	310	155	261	-	160	19	8

Type	DN	L	H	H1	H2	k	d2	n
VL 3	15	130	63	192	213	55	11	4
	20	150	70	194	215	65	11	4
	25	160	75	198	219	75	11	4
	32	180	80	203	223	90	14	4
	40	200	90	227	247	100	14	4
	50	230	100	239	259	110	14	4
	65	290	120	245	-	130	14	4
	80	310	155	261	-	150	19	4

Installation Instructions:

- Refer to the AMV(E) 335, 435, 438 SU instructions for VRB 2, VRG 2 (DN 15-50) and VRB 3, VRG 3 (DN 15-50).
- For VF 2, VL 2 (DN 15-80) and VF 3, VL 3 (DN 15-80), follow the AMV(E) 335, 435 instructions.
- For VF 2, VL 2 (DN 15-50) and VF 3, VL 3 (DN 15-50), refer to the AMV(E) 438 SU instructions.

Product Dimensions:

Detailed dimensions for each product type are provided based on DN size and model. Refer to the specific dimensions for accurate installation.

FAQS

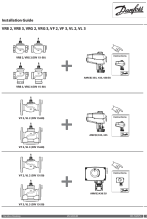
Q: Can I use different sizes of fittings with these products?

A: The products are designed to work with specific DN sizes as mentioned. It is recommended to use compatible fittings for optimal performance.

Q: What is the pressure rating for the different product models?

A: The pressure ratings vary for each model. VRB and VRG have a PN of 6, VL has a PN of 16, and VF and VRG have a PN of 16 as well.

Documents / Resources

	<p>Danfoss VRB 2 Series Port Control Valves [pdf] Installation Guide VRB 2, VRB 3, VRG 2, VRG 3, VF 2, VF 3, VL 2, VL 3, VRB 2 Series Port Control Valves, VRB 2 Series, Port Control Valves, Control Valves, Valves</p>
---	--

References

- [User Manual](#)

[Manuals+](#), [Privacy Policy](#)

This website is an independent publication and is neither affiliated with nor endorsed by any of the trademark owners. The "Bluetooth®" word mark and logos are registered trademarks owned by Bluetooth SIG, Inc. The "Wi-Fi®" word mark and logos are registered trademarks owned by the Wi-Fi Alliance. Any use of these marks on this website does not imply any affiliation with or endorsement.