



Danfoss VR Way Valve With Male Thread Installation Guide

[Home](#) » [Danfoss](#) » Danfoss VR Way Valve With Male Thread Installation Guide 

Contents

- [1 Danfoss VR Way Valve With Male Thread](#)
- [2 Specifications](#)
- [3 Product Usage Instructions](#)
- [4 FAQs](#)
- [5 Documents / Resources](#)
 - [5.1 References](#)



Danfoss VR Way Valve With Male Thread



Specifications

- Model Numbers: VR, VRB(G), VF, VFS
- Product Codes: 065R9067 7369254-7, AMV 423, AMV 523
- Compatible Models: VF(S) 2-3 DN 15 – 100 mm, VF2 DN 15 – 32 mm, VF2-3 DN 65 – 150 mm, VFS 2 DN 65 – 100 mm
- Pressure Ratings: VR2, VRB(G) 3 – 13 bar = 13 kp/cm³ = 185 lbf/in², 16 bar = 16 kp/cm³ = 227 lbf/in², 25 bar = 25 kp/cm³ = 355 lbf/in²

Product Usage Instructions

Installation

1. Ensure the product is compatible with your existing system according to the model numbers provided.
2. Select the appropriate model based on the required diameter range.
3. Follow the installation guidelines provided in the manual for proper setup.

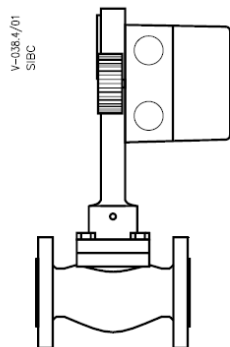
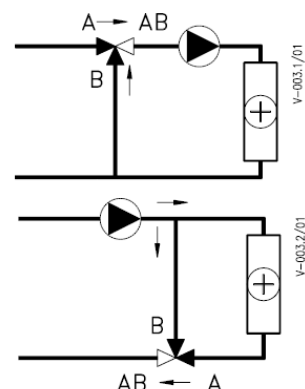
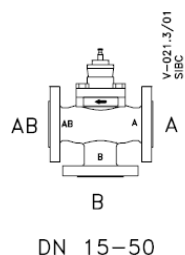
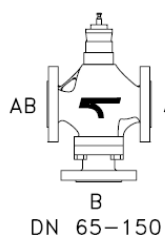
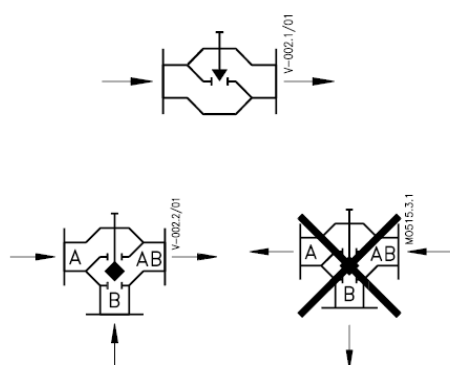
Operation

1. Check the pressure ratings and adjust as needed before operation.
2. Connect the product to the designated input and output pipes.
3. Turn on the product and adjust settings to meet your requirements.

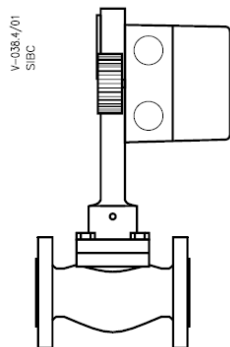
Maintenance

1. Regularly inspect the product for any leaks or malfunctions.

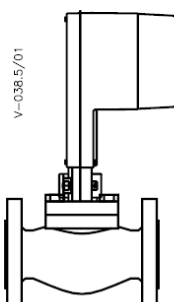
2. Clean the product as per the maintenance schedule provided in the manual.
3. Replace any worn-out parts with genuine replacements to ensure optimal performance.



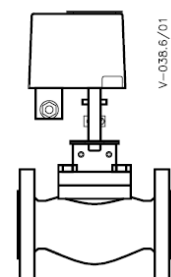
AMV 423, AMV 523
VF(S) 2-3 DN 15 - 100 mm
VR2 $\frac{1}{2} R_p - 4 R_p$
VRB(G) 3 DN 15 - 50



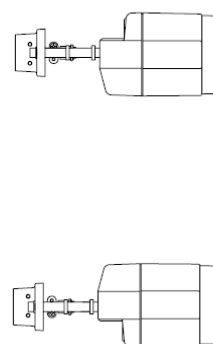
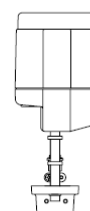
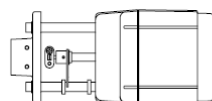
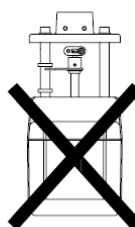
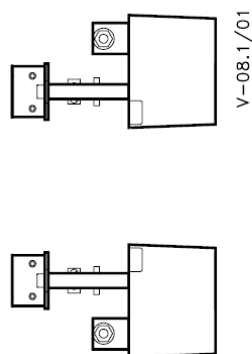
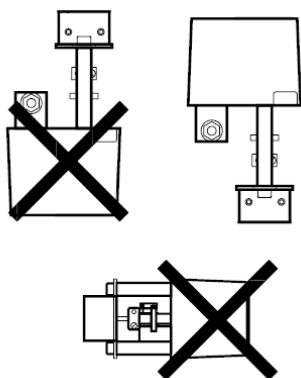
AMV 323
VF(S) 2-3 DN 15 - 65 mm
VR2 $\frac{1}{2} R_p - 2\frac{1}{2} R_p$
VRB(G) 3 DN 15 - 50



AMV 133
VF2 DN 15 - 32 mm



AMV 123
VF(S) 2-3 DN 15 - 50 mm
VR2 $\frac{1}{2} R_p - 1 R_p$
VRB(G) 3 DN 15 - 50



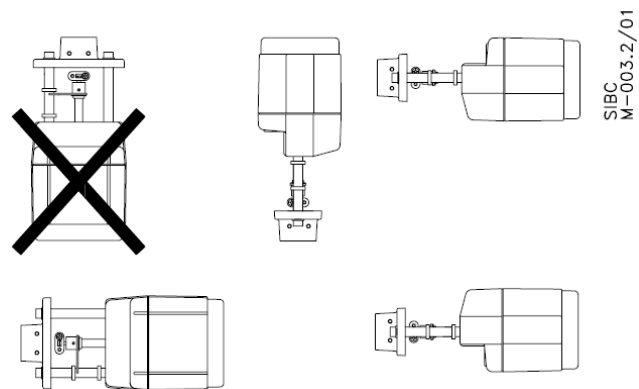
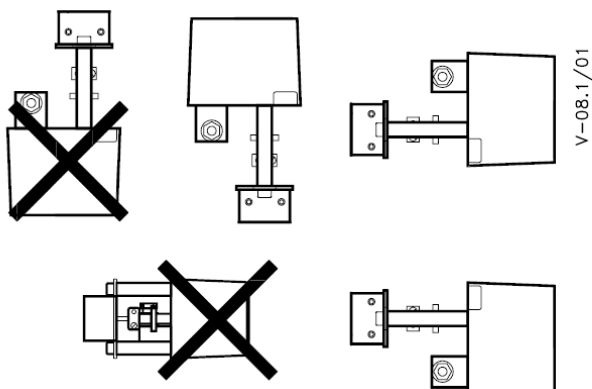
SIBC
M-003.2/01

AMV(E) 550

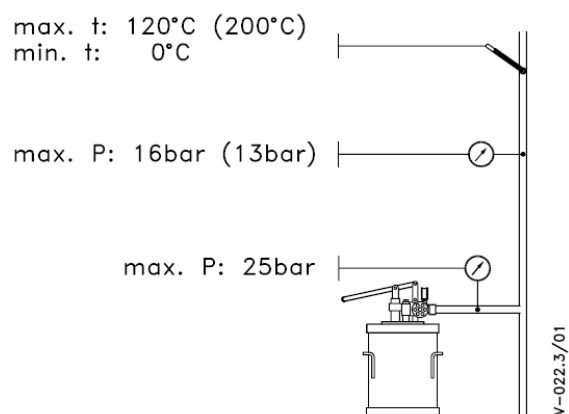
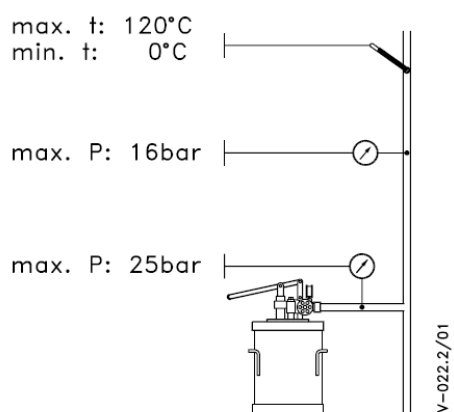
- VF2-3DN 65 – 150
- VFS 2DN 65 – 100

AMV(E) 024, AMV 230

- VF(S) 2-3 DN 15 – 50 mm
- VR2 ½ Rp – 4Rp
- VRB(G) 3 DN 15 – 50



- AMV 123
- AME 024, AMV 024, AMV 230

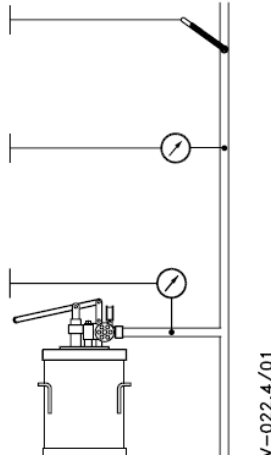


- VR2, VRG(B) 3
- VF2 / VF3

max. t: 120°C (200°C)
min. t: 0°C

max. P: 25bar (20bar)

max. P: 40bar



13 bar = 13 kp/cm³ = 185 lbf/in²
16 bar = 16 kp/cm³ = 227 lbf/in²
25 bar = 25 kp/cm³ = 355 lbf/in²

- VFS2

EI.97.C7.00 © Danfoss 1/98

FAQs

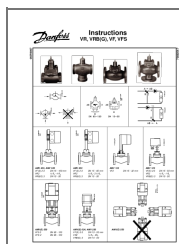
Q: What should I do if the product shows a pressure higher than the specified ratings?

A: In case of exceeding pressure ratings, immediately turn off the product and release excess pressure before further operation. Check for any blockages or faults in the system that might be causing the issue.

Q: How often should I conduct maintenance on the product?

A: Regular maintenance is recommended at least once every six months to ensure smooth operation and prolong the product's lifespan. However, frequency may vary based on usage intensity and environmental conditions.

Documents / Resources



[Danfoss VR Way Valve With Male Thread](#) [pdf] Installation Guide

AMV 423, AMV 523, AMV 133, AMV 123, AMV E 550, AMV 230, AME 024, VR Way Valve With Male Thread, VR, Way Valve With Male Thread, With Male Thread, Male Thread

References

- [User Manual](#)

[Manuals+](#), [Privacy Policy](#)

This website is an independent publication and is neither affiliated with nor endorsed by any of the trademark owners. The "Bluetooth®" word mark and logos are registered trademarks owned by Bluetooth SIG, Inc. The "Wi-Fi®" word mark and logos are registered trademarks owned by the Wi-Fi Alliance. Any use of these marks on this website does not imply any affiliation with or endorsement.