



Danfoss Termix One-Q Instantaneous Water Heaters With Heat Exchanger User Guide

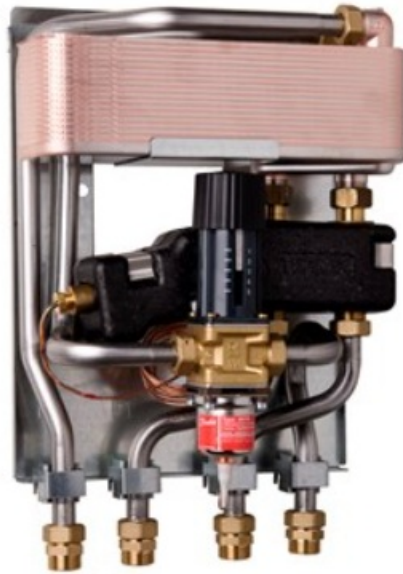
[Home](#) » [Danfoss](#) » Danfoss Termix One-Q Instantaneous Water Heaters With Heat Exchanger User Guide 

Contents

- [1 Danfoss Termix One-Q Instantaneous Water Heaters With Heat Exchanger](#)
- [2 Product Information](#)
- [3 Product Usage Instructions](#)
- [4 Operating Guide Termix One-Q](#)
- [5 Safety notes](#)
- [6 Mounting](#)
- [7 Installation](#)
- [8 Design](#)
- [9 Controls](#)
- [10 Troubleshooting](#)
- [11 Declaration](#)
- [12 Documents / Resources](#)
 - [12.1 References](#)
- [13 Related Posts](#)



Danfoss Termix One-Q Instantaneous Water Heaters With Heat Exchanger



Product Information

Specifications

- Product Name: Termix One-Q
- Functional Description: District heating substation for direct heating and instantaneous domestic hot water with a self-acting thermostatic/flow controller
- Mounting: Wall-mounting

Functional Description

The Termix One-Q is a district heating substation designed for direct heating and instantaneous domestic hot water. It features a self-acting thermostatic/flow controller that ensures optimal temperature control.

Safety Notes

The following instructions refer to the standard design of the substation. Special versions of substations are available upon request.

Corrosion Protection

All pipes and components of the Termix One-Q are made of stainless steel and brass to provide corrosion protection. It is important to note that the maximum chloride compounds of the flow medium should not exceed 150 mg/l. Exceeding this limit increases the risk of equipment corrosion significantly.

Energy Source

The Termix One-Q is primarily designed for use with district heating as the primary source of energy. However, it can also be used with other energy sources that are compatible with the operating conditions and meet local regulations.

Choice of Material

The choice of materials used in the Termix One-Q always complies with local legislation to ensure safety and durability.

Safety Valve(s)

We recommend mounting safety valve(s) on the substation to ensure safe operation. However, the installation should always comply with local regulations.

Connection

The substation must be equipped with features that allow it to be separated from all energy sources, including power supply, to ensure safe maintenance and operation.

Product Usage Instructions

Mounting

To mount the Termix One-Q, follow these steps:

1. Select a suitable location on the wall for installation.
2. Ensure that the mounting surface is sturdy and can support the weight of the substation.
3. Use appropriate screws or brackets to securely attach the substation to the wall. Refer to the schematic diagram for specific mounting instructions.

Design

The Termix One-Q has a sleek and compact design that allows for easy integration into any space. The substation is designed with functionality and aesthetics in mind.

Schematic Diagram

Refer to the provided schematic diagram for a detailed visual representation of the Termix One-Q's components and connections.

Controls

DHW Temperature Control

The Termix One-Q features a DHW temperature control that allows you to adjust the desired temperature of the domestic hot water. Follow these steps to set the temperature:

1. Locate the DHW temperature control knob on the substation.
2. Rotate the knob clockwise to increase the temperature or counterclockwise to decrease it.
3. Set the temperature to your desired level based on your requirements.

Other Controls

In addition to the DHW temperature control, there may be other controls on the Termix One-Q depending on the specific model and features. Refer to the user manual or contact customer support for detailed information on additional controls.

Maintenance

To ensure optimal performance and longevity of the Termix One-Q, regular maintenance is recommended. Follow these guidelines:

- Periodically check for any signs of corrosion or damage to the substation. If any issues are detected, contact a qualified technician for repairs.
- Clean the external surfaces of the substation using a soft cloth and mild detergent. Avoid using abrasive cleaners that may damage the finish.
- Refer to the user manual for specific maintenance instructions based on your model and local regulations.

Troubleshooting

Troubleshooting in General

If you encounter any issues with the Termix One-Q, refer to the troubleshooting section of the user manual for step-by-step instructions on identifying and resolving common problems.

Troubleshooting DHW

If you are experiencing specific issues related to domestic hot water, follow these general troubleshooting steps:

1. Check if the substation is properly connected to the energy source and power supply.
2. Ensure that the DHW temperature control is set to the desired level.
3. If there is no hot water, check if the district heating supply is functioning correctly. Contact your district heating provider if necessary.
4. If the issue persists, consult a qualified technician for further assistance.

Disposal

When disposing of the Termix One-Q, follow local regulations and guidelines for proper disposal methods. Contact your local waste management authority for more information.

Declaration

Declaration of Conformity

The Termix One-Q complies with all relevant safety and quality standards. The Declaration of Conformity ensures that the product meets the necessary requirements for safe and reliable operation.

Frequently Asked Questions (FAQ)

- **Q: Can I use the Termix One-Q with other energy sources?**

A: Yes, the Termix One-Q can be used with other energy sources as long as they are compatible with the operating conditions and meet local regulations.

- **Q: How often should I perform maintenance on the Termix One-Q?**

A: Regular maintenance is recommended to ensure optimal performance. Follow the maintenance guidelines provided in the user manual or consult a qualified technician for specific recommendations based on your model and local regulations.

Operating Guide Termix One-Q

Functional description

District heating substation for direct heating and instantaneous domestic hot water with a self-acting thermostatic/flow controller. Designed for wall-mounting.

Application

The Termix One is an instantaneous water heater featuring superb heat extraction and high performance. The Termix One is suitable for flats, single-family houses as well as for small apartment buildings with up to 10 apartments. The water heater is available in three sizes, either for 1 apartment, for 1-4 apartments or for 5 up to 10 apartments. The Termix One is applicable for decentralized heating systems – as well as for district heating networks with summer operation at low temperatures or changes in differential pressure. The Termix One heat exchanger cools out the district heating water very efficiently, thereby creating a very good operation economy.

Domestic hot water (DHW)

The domestic hot water is prepared in the heat exchanger and the temperature is regulated with a self-acting thermostatic control valve that controls the DHW preparation by using a

flow-compensation principle. The rapid closing of the control valve protects the heat exchanger against over heating and lime scale formation. The control valve ensures a stable hot water temperature by varying loads, flow temperatures and differential pressure without the need for readjusting the valve. The heat exchanger cools out the district heating water very efficiently, thereby creating a very good operating economy. The control valve also works as a bypass keeping the house supply line at 35 °C during standstill. This shortens the waiting periods during summer when the heating system is in reduced operation.

Safety notes

Safety Notes – general

The following instructions refer to the standard design of substation. Special versions of substations are available on request.

This operating manual should be read carefully before installation and start-up of the substation. The manufacturer accepts no liability for damage or faults that result from non-compliance with the operating manual. Please read and follow all the instructions carefully to prevent accidents, injury and damage to property. Assembly, start-up and maintenance work must be performed by qualified and authorized personnel only.

Please comply with the instructions issued by the system manufacturer or system operator.

Corrosion protection

All pipes and components are made of stainless steel and brass. The maximum chloride compounds of the flow medium should not be higher than 150 mg/l.

The risk of equipment corrosion increases considerably if the recommended level of permissible chloride compounds is exceeded.

Energy source

The substation is designed for district heating as the primary source of energy. However, also other energy sources can be used where the operating conditions allow it and always are comparable to district heating.

Application

The substation is designed to be connected to the house installation in a frost-free room, where the temperature does not exceed 50 °C and the humidity does not exceed 60%. Do not cover or wall up the substation or in any other way block the entrance to the station.

Choice of material

Choice of materials always in compliance with local legislation.

Safety valve(s)

We recommend mounting of safety valve(s), however, always in compliance with local regulations.

Connection

The substation must be equipped with features that ensure that the substation can be separated from all energy sources (also power supply).

Emergency

In case of danger or accidents – fire, leaks or other dangerous circumstances – interrupt all energy sources to the station if possible, and seek expert help.

In case of discoloured or bad-smelling domestic hot water, close all shut-off valves on the substation, inform the operating personnel and call for expert help immediately.

REACH

All Danfoss A/S products fulfill the requirements in REACH.

One of the obligations in REACH is to inform customers about presence of Candidate list substances if any, we hereby inform you about one substance on the candidate list: The product contains brass parts which contains lead (CAS no: 7439-92-1) in a concentration above 0.1% w/w.

Storage

Any storage of the substation which may be necessary prior to installation should be in conditions which are dry and heated.

Authorized personnel only

Assembly, start-up and maintenance work must be performed by qualified and authorized personnel only.

Please observe instructions carefully

To avoid injury to persons and damage to the device, it is absolutely necessary to read and observe these instructions carefully.

Warning of high pressure and temperature

Be aware of the installation's permissible system pressure and temperature.

- The maximum temperature of the flow medium in the substation is 120 °C.
- The maximum operating pressure of the substation is 16 bar.
- The risk of persons being injured and equipment damaged increases considerably if the recommended permissible operating parameters are exceeded.
- The substation installation must be equipped with safety valves, however, always in accordance with local regulations.

Warning of hot surface

The substation has got hot surfaces, which can cause skin burns. Please be extremely cautious in close proximity to the substation.

Power failure can result in the motor valves being stuck in open position. The surfaces of the substation can get hot, which can cause skin burns. The ball valves on district heating supply and return should be closed.

Warning of transport damage

Before substation installation, please make sure that the substation has not been damaged during transport.

IMPORTANT – Tightening of connections

Due to vibrations during transport all flange connections, screw joints and electrical clamp and screw connections must be checked and tightened before water is added to the system. After water has been added to the system and the system has been put into operation, re-tighten ALLALLALL connections.

Mounting

Installation must be in compliance with local standards and regulations.

District heating (DH) – In the following sections, DH refers to the heat source which supplies the substations. A variety of energy sources, such as oil, gas or solar power, could be used as the primary supply to Danfoss substations. For the sake of simplicity, DH can be taken to mean the primary supply.

Connections

1. Domestic cold water (DCW)
2. Domestic hot water (DHW)
3. District heating (DH) supply
4. District heating (DH) return

Connection sizes

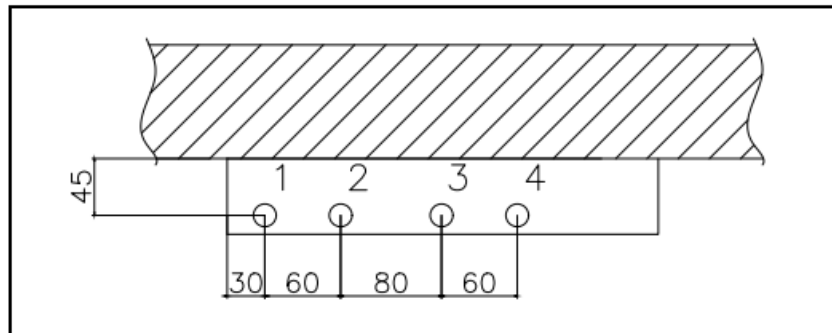
- DH: G ¾" (int. thread)
- DCW + DHW: G ¾" (int. thread)

Dimensions (mm)

- Type 1 + 2 without cover: H 428 x W 312 x D 155
- Type 1 + 2 with cover: H 430 x W 315 x D 165
- Type 3 without cover:
- H 468 x W 312 x D 155 Type 3 with cover:
- H 470 x W 315 x D 165
- **Weight (approx.):** 10 – 12 kg

Authorized personnel only

Assembly, start-up and maintenance work must be performed by qualified and authorized personnel only.



The pipe placement can deviate from the shown drawing. Please note the markings on the station.

Installation

Mounting

- **Adequate space**

Please allow adequate space around the substation for mounting and maintenance purposes.

- **Orientation**

The station must be mounted so that components, keyholes and labels are placed correctly. If you wish to mount the station differently please contact your supplier.

- **Drillings**

Where substations are to be wall-mounted, drillings are provided in the back mounting plate. Floor mounted units have support.

- **Labelling**

Each connection on the substation is labelled.

Before installation:

- **Clean and rinse**

Prior to installation, all substation pipes and connections should be cleaned and rinsed.

- **Tightening**

Due to vibration during transport, all substation connections must be checked and tightened before installation.

- **Unused connections**

Unused connections and shut-off valves must be sealed with a plug. Should the plugs require removal, this must only be done by an authorized service technician.

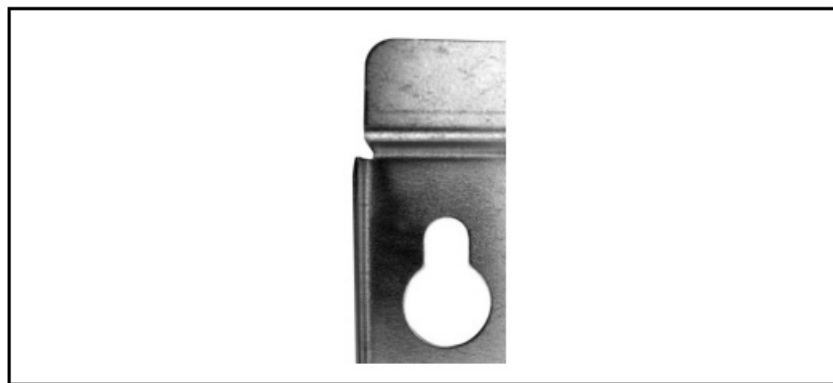
Installation:

Strainer

If a strainer is supplied with the station it must be fitted according to schematic diagram. Please note that the strainer may be supplied loose.

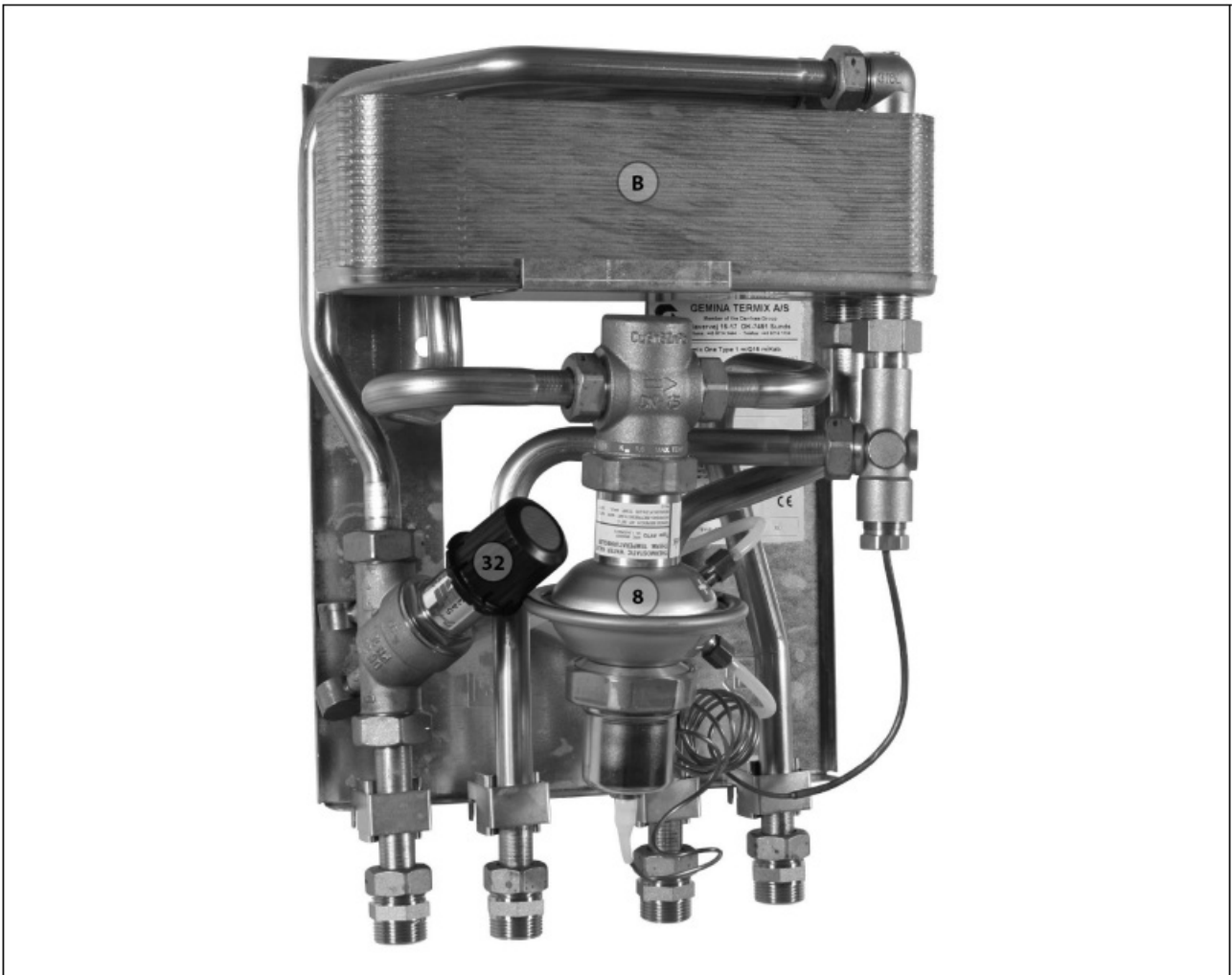
Connections

Internal installation and district heating pipes connections must be made using threaded, flanged or welded connections.



Keyhole for mounting.

Design

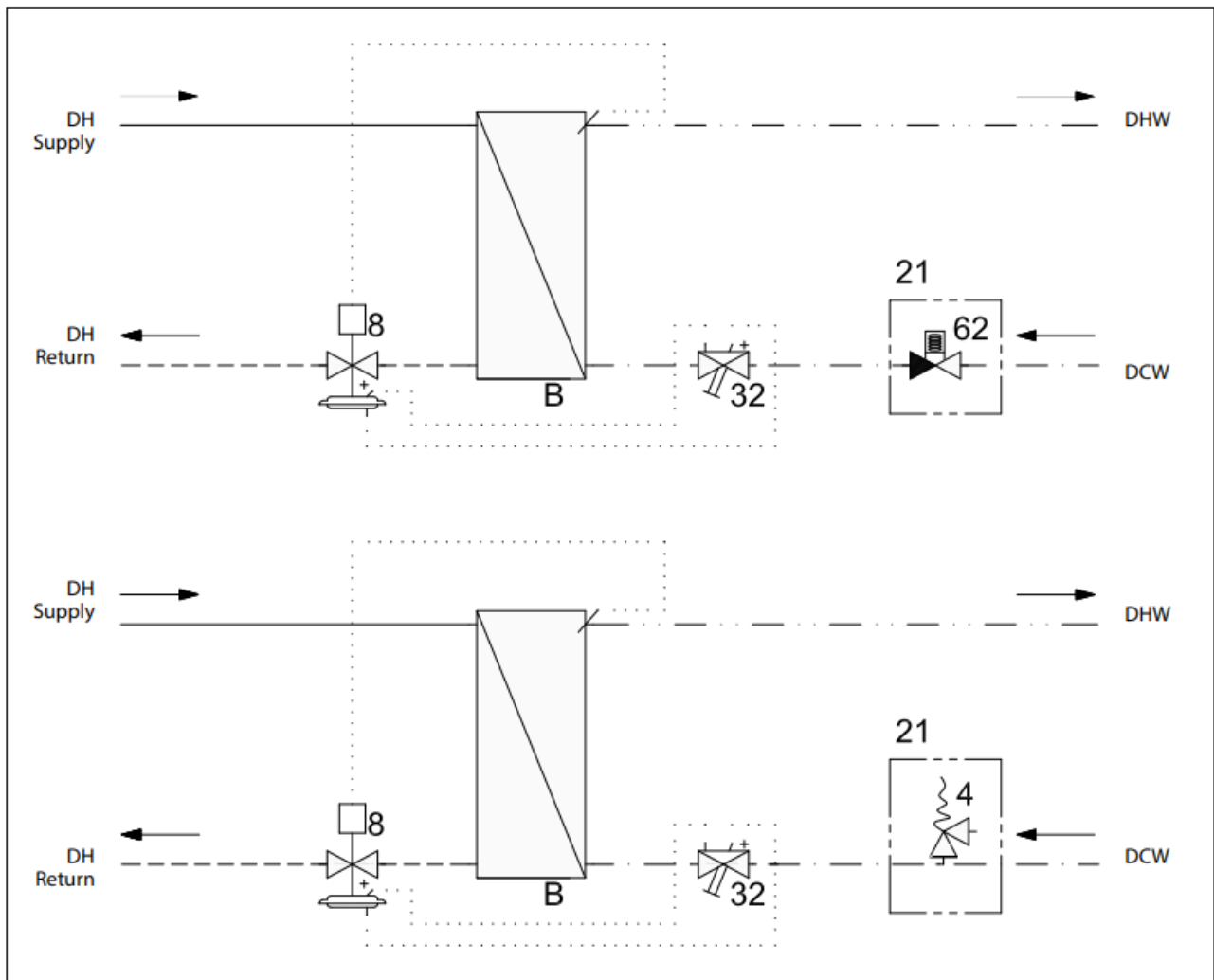


Your substation might look different than the substation shown.

Design description

- B Heat exchanger, DHW
- 8 Flow-compensated thermostatic valve, DHW
- 32 Control valve, DHW

Schematic diagram



Your substation might look different than the schematic diagram shown.

- **First diagram:** Termix One-Q – with GTU.
- **Second diagram:** Termix One-Q – with safety valve.
- **Schematic description**
 - B Beat exchanger, DHW 21 To be ordered separately
 - 4 Safety valve 32 Control valve
 - 8 Flow-compensated thermostatic valve 62 GTU Pressure equalizer
 - DHW: Domestic Hot Water
 - DCW: Domestic Cold Water
 - DH Supply: District Heating Supply
 - DH Return: District Heating Return

Technical parameters

- Technical parameters
- Nominal pressure: PN 16
- Max. DH supply temperature: 120 °C
- Min. DCW static pressure: 0.5 bar
- Brazing material (HEX): Copper
- Heat exchangers test pressure: 30 bar

- Sound level: M 55 dB

Controls

DHW temperature control

DHW temperature control

There are various types of DHW temperature control used in Danfoss substations.

DHW temperature should be adjusted to 45-50 °C, as this provides optimal utilisation of DH water. At DHW temperatures above 55 °C, the possibility of lime scale deposits increases significantly.

AVTQ controller (20–60 °)

AVTQ is a self-acting flow-compensated temperature controller. It has a permanent no-load (idle) temperature setting of about 35 °C. The AVTB operates at its best at DH supply temperatures of up to 90°C.

Thermostatic control

DHW temperature is adjusted as follows:

- To increase temperature, turn the handle on the thermostatic controller to select a higher number.
- To decrease temperature, turn the handle on the thermostatic controller to select a lower number.



Other

Safety valve

The purpose of the safety valve is to protect the substation from excessive pressure.

The blow-off pipe from the safety valve must not be closed. The blow-off pipe outlet should be placed so that it discharges freely and it is possible to observe any dripping from the safety valve.

It is recommended to check the operation of safety valves at intervals of 6 months. This is done by turning the valve head in direction indicated.



Strainer

Strainers should be cleaned regularly by authorized personnel. The frequency of cleaning would depend on operating conditions and the manufacturer's instructions.



GTU Pressure Equalizer

The GTU Pressure Equalizer absorbs the expansion on the secondary side of the Termix water heaters and can be used as a substitute to the safety valve.

Furthermore the pressure equalizer absorbs a possible increase in pressure, so a discharge outlet is omitted. The GTU Pressure Equalizer may not be applied in systems with hot water circulation.



Maintenance

The substation requires little monitoring, apart from routine checks. It is recommended to read the energy meter at regular intervals, and to write down the meter readings.

Regular inspections of the substation according to this Instruction are recommended, which should include:

- **Strainers**

Cleaning of strainers.

- **Meters**

Checking of all operating parameters such as meter readings.

- **Temperatures**

Checking of all temperatures, such as DH supply temperature and DHW temperature.

- **Connections**

Checking all connections for leakages.

- **Safety valves**

The operation of the safety valves should be checked by turning the valve head in the indicated direction.

- **Venting**

Checking that the system is thoroughly vented.

Inspections should be carried out minimum every two years.

Spare parts can be ordered from Danfoss. Please ensure that any enquiry includes the substation serial number.

Authorized personnel only

Assembly, start-up and maintenance work must be performed by qualified and authorized personnel only.

Troubleshooting

Troubleshooting in general

In the event of operating disturbances, the following basic features should be checked before carrying out actual troubleshooting:

- the substation is connected to electricity,
- the strainer on the DH supply pipe is clean,
- the supply temperature of the DH is at the normal level (summer, at least 60 °C – winter, at least 70 °C),
- the differential pressure is equal to or higher than the normal (local) differential pressure in the DH network – if in doubt, ask the DH plant supervisor,
- pressure on the system – check the HE pressure gauge.

Authorized personnel only

Assembly, start-up and maintenance work must be performed by qualified and authorized personnel only.

Troubleshooting DHW

Problem	Possible cause	Solution
Too little or no DHW.	Strainer in supply or return line clogged.	Clean strainer(s).
	DHW circulation pump out of order or with too low setting.	Check circulation pump.
	Defective or clogged non-return valve.	Replace – clean.
	No electricity.	Check.
	Wrong setting of automatic controls, if any.	To adjust an electronic controller for DHW, pls. note enclosed instructions for electronic controller.
	Scaling of the plate heat exchanger.	Replace – rinse out.
	Defective motorized valve.	Check (use manual function) – replace.
	Defective temperature sensors.	Check – replace.
Hot water in some taps but not in all.	Defective controller.	Check – replace.
	DCW is being mixed with the DHW, e.g. in a defective thermostatic mixing valve.	Check – replace.
Tap temperature too high; DHW tap load too high.	Defective or clogged non-return valve on circulation valve.	Replace – clean.
	Thermostatic valve adjusted to a too high level.	Check – set.
Temperature drop during tapping.	Scaling of the plate heat exchanger.	Replace – rinse out.
	Larger DHW flow than the substation has been designed for.	Reduce DHW flow.
Thermostatic control valve does not close	Temperature difference between DH supply and DHW set point too low.	Lower the set point temperature or increase the DH supply temperature.

Disposal

Disposal note

This symbol on the product indicates that it may not be disposed of as household waste..

It must be handed over to the applicable take-back scheme for the recycling of electrical and electronic equipment.

- Dispose of the product through channels provided for this purpose.
- Comply with all local and currently applicable laws and regulations.



Declaration

Declaration of conformity

Category 0 without electrical equipment

ENGINEERING
TOMORROW



Danfoss A/S

6430 Nordborg
Denmark
CVR nr.: 20 16 57 15

Telephone: +45 7488 2222
Fax: +45 7449 0949

EU DECLARATION OF CONFORMITY

Danfoss A/S

Danfoss District Energy Division

Declares under our sole responsibility that the:

Product category: Small substations

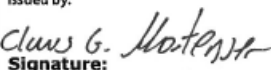

Type designations: One
Novi
VMTD Mini
VMTD
VMTD-F
Übergabestation

Covered by this declaration is in conformity with the following directives, standards or other normative documents, provided that the product is used in accordance with our instructions.

Machinery Directive 2006/42/EC

EN ISO 12100:2011

Safety of machinery – General principles for design – Risk assessment and risk reduction

Date: 2021.07.21	Issued by:  Signature: Name: Claus G. Mortensen Title: Quality Manager	Date: 2021.07.21	Approved by:  Signature: Name: Karina Friis Skov Title: Director, Engineering
Place of issue: DK-7451 Sunds		Place of issue: DK-7451 Sunds	

Danfoss only vouches for the correctness of the English version of this declaration. In the event of the declaration being translated into any other language, the translator concerned shall be liable for the correctness of the translation

ID No: LUK30001
This doc. is managed by 50090577

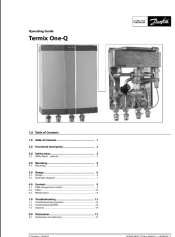
Revision No: 01

Page 1 of 1

Gemina Termix A/S • Member of the Danfoss Group danfoss.com • +45 9714 1444 • mail@termix.dk

All trademarks in this material are property of Danfoss A/S or Danfoss group companies. Danfoss and the Danfoss logo are trademarks of Danfoss A/S. All rights reserved. 16|© Danfoss | 2024.01 AQ092386472759en-020601 / LUK38020

Documents / Resources

	<p>Danfoss Termix One-Q Instantaneous Water Heaters With Heat Exchanger [pdf] User Guide</p> <p>Termix One-Q Instantaneous Water Heaters With Heat Exchanger, Termix One-Q, Instantaneous Water Heaters With Heat Exchanger, Water Heaters With Heat Exchanger, Heaters With Heat Exchanger, Heat Exchanger, Heat Exchanger</p>
---	---

References

- [User Manual](#)

[Manuals+](#). [Privacy Policy](#)

This website is an independent publication and is neither affiliated with nor endorsed by any of the trademark owners. The "Bluetooth®" word mark and logos are registered trademarks owned by Bluetooth SIG, Inc. The "Wi-Fi®" word mark and logos are registered trademarks owned by the Wi-Fi Alliance. Any use of these marks on this website does not imply any affiliation with or endorsement.