



Danfoss SpeedUp Strongboard For Tiles and Laminates Installation Guide

[Home](#) » [Danfoss](#) » Danfoss SpeedUp Strongboard For Tiles and Laminates Installation Guide 



Installation Guide
Tiles on SpeedUp Strongboard
for Tiles and Laminates

Contents

- [1 Installation of Tiles on SpeedUp Strongboard for Tiles and Laminates](#)
- [2 Documents / Resources](#)
 - [2.1 References](#)

Installation of Tiles on SpeedUp Strongboard for Tiles and Laminates

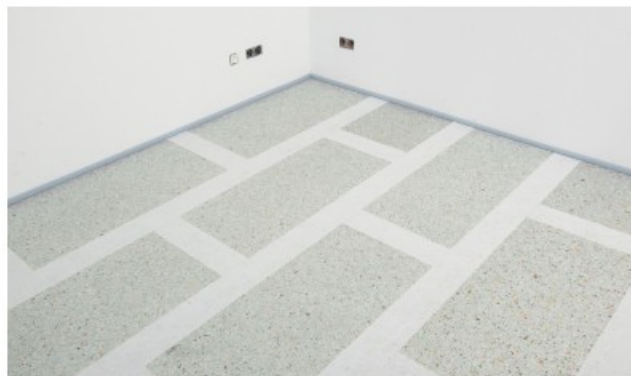


Fig. 1: Install the Strongboard panels evenly on top of the heat panels leaving no air voids.

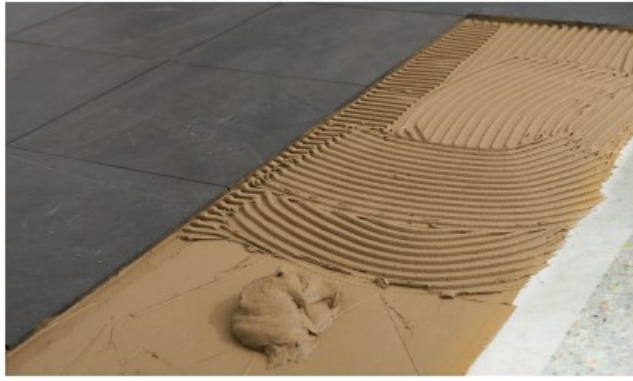


Fig. 2: Prepare the Mapei Elastorapid tile adhesive and apply it to the strongboard.



Fig. 3: Number of notches on the tile adhesive comb/trowel depends on the tile size: · 8-notch trowel for tiles from 10×10 cm to 30×30 cm · 10-notch trowel for tiles up to 60 cm x 40 cm



Fig. 4: Also fully apply tile adhesive to the back of the tile.



Fig. 5: Using the buttering- floating technique press the tiles on to the prepared floor.



Fig. 6: Press tiles down firmly eliminating any air trapped in the process. Ensure that the depth of the bed is at least 4 mm.

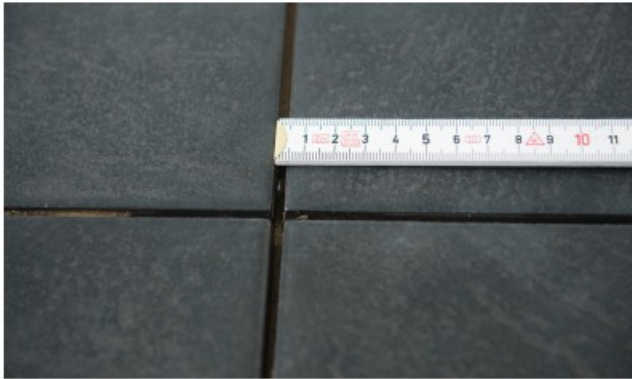


Fig. 7: Observe the grout width: · tiles up 30 x 30 cm have 3 mm minimum grout · 40 x 60 cm tiles will have at least 5 mm grout



Fig. 8: Grout the area after 24 hours with Mapei ULTRA COLOR plus.



Fig. 9: Having applied the grout use a sponge board to clean the tiles diagonally to the grout direction.



Fig. 10: It is safe to walk on the tiles after 24 hours. The floor heating can be turned on 7 days after grouting at the earliest.

Danfoss can accept no responsibility for possible errors in catalogues, brochures and other printed material. Danfoss reserves the right to alter its products without notice. This also applies to products already on order provided that such alterations can be made without subsequential changes being necessary in specifications already agreed. All trademarks in this material are property of the respective companies. Danfoss and the Danfoss logotype are trademarks of Danfoss A/S. All rights reserved.



Danfoss A/S
Heating Solutions
Haarupvaenget 11
8600 Silkeborg
Denmark

Phone: +45 7488 8000

Fax: +45 7488 8100

Email: ComfortControlsInternet@danfoss.com

www.heating.danfoss.com

VICSF202

Produced by Danfoss Heating Solutions © 12/2010

Documents / Resources

	<p>Danfoss SpeedUp Strongboard For Tiles and Laminates [pdf] Installation Guide VICSF202, SpeedUp Strongboard For Tiles and Laminates, SpeedUp, Strongboard For Tiles and Laminates, Tiles and Laminates, Laminates</p>
--	---

References

- [Danfoss Climate Solutions for heating | Efficient solutions for superior comfort | Danfoss](#)
- [User Manual](#)

