




Danfoss RT 115 Thermostat Installation Guide

[Home](#) » [Danfoss](#) » Danfoss RT 115 Thermostat Installation Guide 



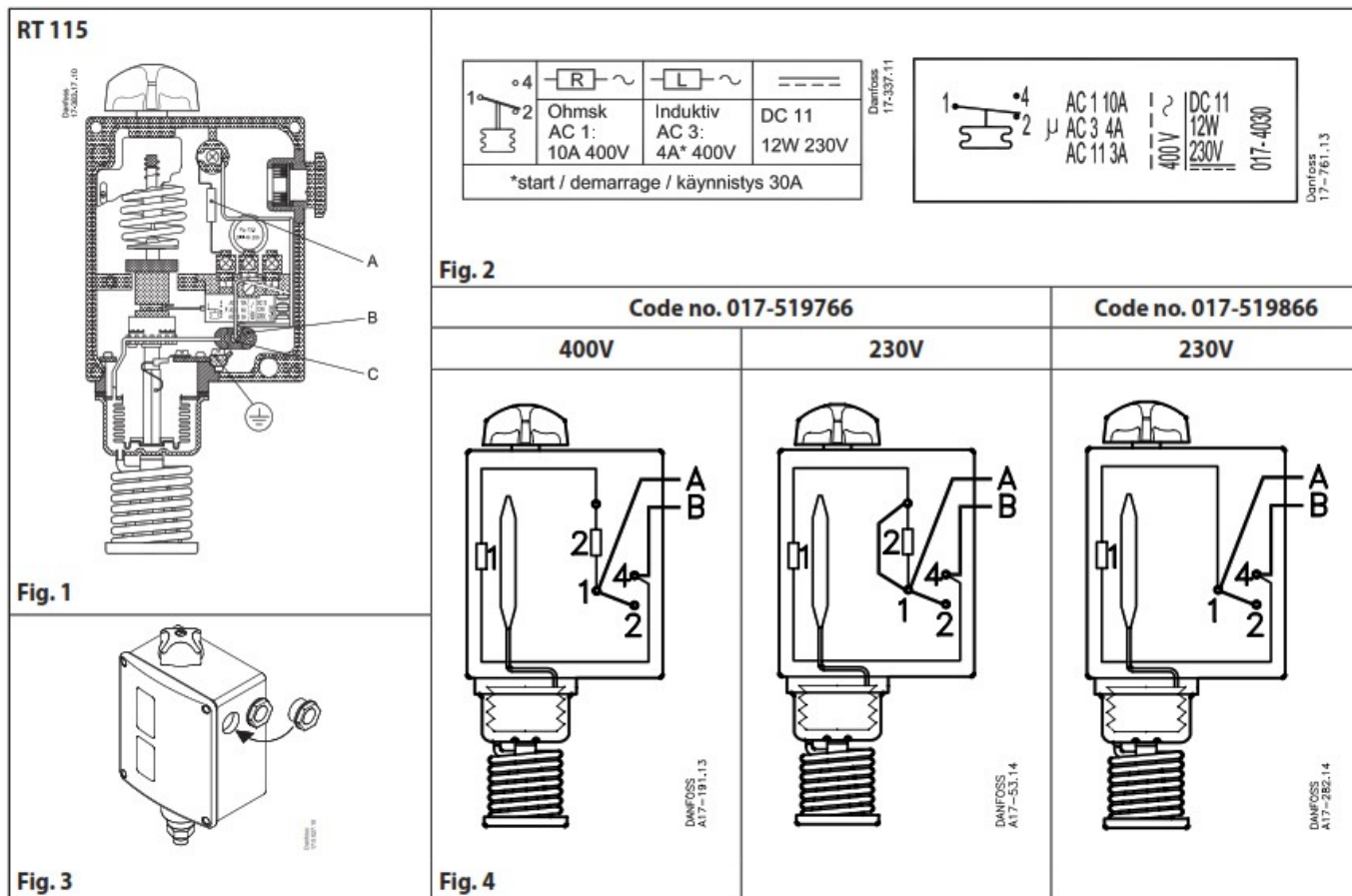
ENGINEERING
TOMORROW
Installation guide
Thermostat RT 115

Contents

- [1 RT 115 Thermostat](#)
- [2 Application](#)
- [3 Installation](#)
- [4 Fitting](#)
- [5 Setting](#)
- [6 Documents / Resources](#)
- [7 Related Posts](#)

RT 115 Thermostat





017R9322

Application

The thermostat type **RT 115** is designed for control of forced ventilation in livestock buildings and hencoops. The thermostat has the effect of constant ventilation as long as the room temperature exceeds the temperature setting.

If the room temperature is lower than the temperature setting, there will only be intermittent ventilation. The cut-out period is extended when the room temperature falls, and if the temperature falls, and if the room temperature is 2 °C lower than the temperature setting, the thermostat cannot start the fan.

The special kind of control offered by **RT 115** is due to the extra sensor (B) inside the thermostat housing. Alongside the sensor there is an electric heater (C) which is cut in when the fan is cut out and vice versa.

Installation

A set of Pg13.5 cable gland is attached to the RT in a separate bag. To ensure IP66 (units with automatic reset) or IP54 (units with external reset) grade of RT enclosure it is necessary to assemble this gland as shown in the fig. 3. If this gland is not used with a cable, a metal blinding should be also assembled.

Fitting

The thermostat should be fitted in the centre of the building, but in such a position that the body heat from the larger animals cannot directly influence the thermostat.

Setting

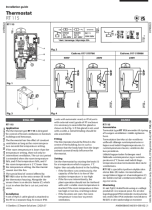
Set the thermostat by rotating the knob (5) for a temperature which is approx. 1 °C higher than actually desired in the building.

- If the fan then runs continuously, the capacity of the fan is too low or the outdoor temperature is too high
- If the fan runs intermittently, the plant operation should not be interfered with until a stable room temperature is reached. If the room temperature is then too high or too low, resetting is done
- If the fan does not start, the room temperature is too low to permit ventilation.

Info for UK customers only: Danfoss Ltd., 22 Wycombe End, HP9 1NB, GB

© Danfoss | Climate Solutions | 2021.07
AN00008643546501-000102

Documents / Resources

	<p>Danfoss RT 115 Thermostat [pdf] Installation Guide RT 115 Thermostat, RT 115, Thermostat</p>
---	---