

Contents [[hide](#)]

- [1 Danfoss RLV-X Lockshield Valve](#)
- [2 Overview](#)
- [3 Specifications](#)
- [4 Installation Steps](#)
- [5 Filling the Radiator Using Danfoss Drain Cock Adaptor](#)
- [6 FAQ](#)
- [7 Documents / Resources](#)
 - [7.1 References](#)



Danfoss RLV-X Lockshield Valve



Overview

The lockshield valve, also known as Vorlauf- or Absperrverschraubung, is used for isolation and drainage in heating systems. This guide provides instructions for installation and operation.

Specifications

Component	Description
Lockshield Valve	Used for isolation and drainage
Model	RLV-X
Part Number	013R9362

Installation Steps

Step 1: Initial Setup

Use a wrench (19) to secure the valve to the radiator. Ensure it is tightly fitted to prevent leaks.

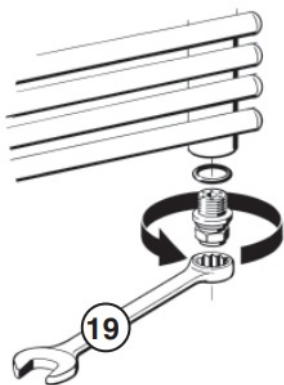
Step 2: Valve Adjustment

There are two methods for adjusting the valve:

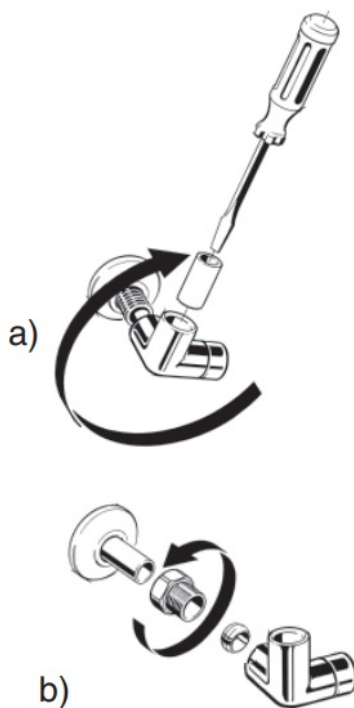
- **Method a:** Use a screwdriver to turn the valve clockwise or counterclockwise as needed.
- **Method b:** Manually adjust the valve by rotating it to the desired position.

Step 3: Final Assembly

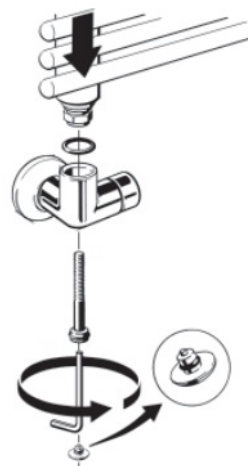
Ensure all components are securely fastened. Check for any leaks and tighten connections if necessary.



1



2

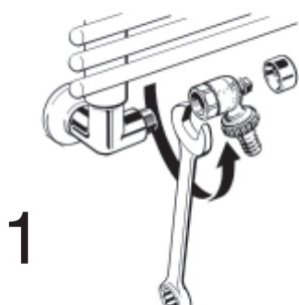


3

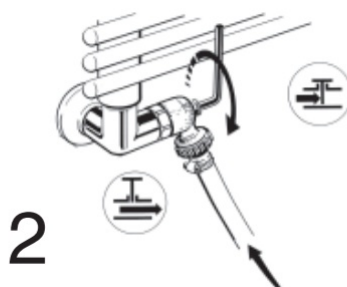
Filling the Radiator Using Danfoss Drain Cock Adaptor

Instructions

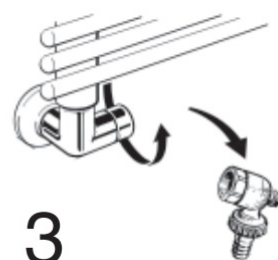
1. Attach the Danfoss drain cock adaptor to the radiator.
2. Ensure the adaptor is tightly secured to prevent leaks.
3. Fill the radiator by opening the valve and allowing water to flow in.



1

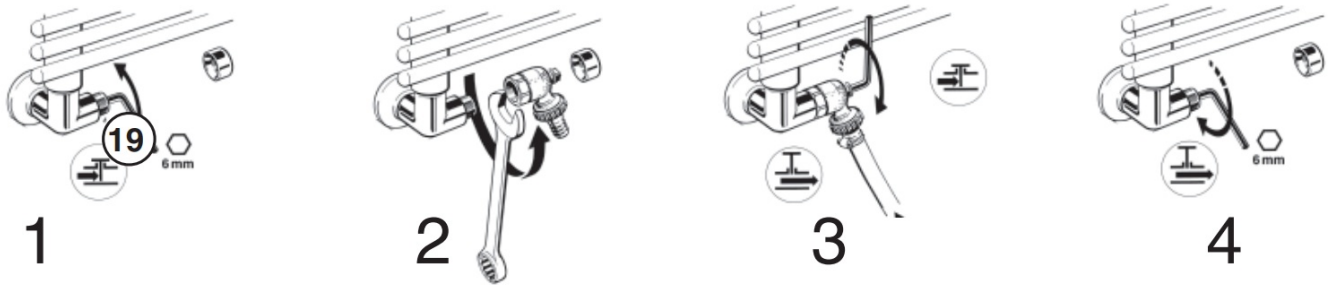


2



3

Draining the radiator using Danfoss drain cock adaptor



FAQ

How do I know if the lockshield valve is compatible with my radiator?

Check the specifications of your radiator and consult with a professional if needed to ensure compatibility.

Can I use the Danfoss drain cock adaptor with other radiator brands?

The Danfoss drain cock adaptor is designed for use with Danfoss products, using it with other brands may not be recommended.

Documents / Resources

	<p>Danfoss RLV-X Lockshield Valve [pdf] User Manual</p> <p>013R9362, 013G9362, RLV-X Lockshield Valve, RLV-X, Lockshield Valve, Valve</p>
--	---

References

- [User Manual](#)

Danfoss
 013G9362, 013R9362, Danfoss, Lockshield Valve, RLV-X, RLV-X Lockshield Valve, Valve

Leave a comment

Your email address will not be published. Required fields are marked *

Comment *

Name

Email

Website

☐ Save my name, email, and website in this browser for the next time I comment.

Post Comment

Search:

e.g. whirlpool wrf535swhz

Search

[Manuals+](#) | [Upload](#) | [Deep Search](#) | [Privacy Policy](#) | [@manuals.plus](#) | [YouTube](#)

This website is an independent publication and is neither affiliated with nor endorsed by any of the trademark owners. The "Bluetooth®" word mark and logos are registered trademarks owned by Bluetooth SIG, Inc. The "Wi-Fi®" word mark and logos are registered trademarks owned by the Wi-Fi Alliance. Any use of these marks on this website does not imply any affiliation with or endorsement.