



Danfoss Regus RA nut Thermostatic Sensors Installation Guide

[Home](#) » [Danfoss](#) » Danfoss Regus RA nut Thermostatic Sensors Installation Guide 

Contents

- [1 Danfoss Regus RA nut Thermostatic Sensors](#)
- [2 Product Information](#)
- [3 Product Usage Instructions](#)
- [4 Installation](#)
- [5 Temperature Limitation](#)
- [6 Shut off](#)
- [7 Theft protection](#)
- [8 Blind mark](#)
- [9 Documents / Resources](#)
- [10 Related Posts](#)



Danfoss Regus RA nut Thermostatic Sensors



Product Information

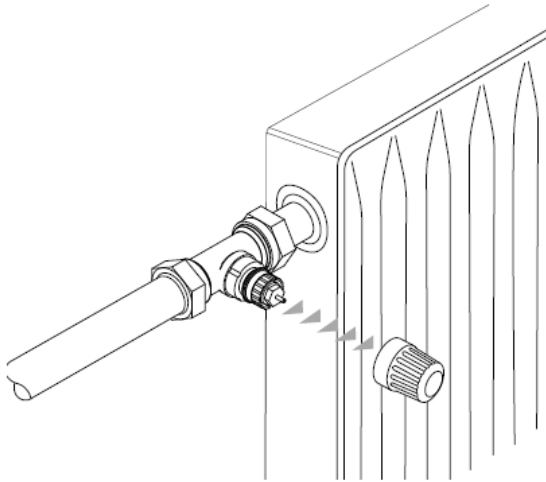
This product is identified by the code number 013G3910. The installation guide provides instructions for installing and using the product. The guide includes information on the maximum and minimum settings for the product and the required torque for installation. The product can be adjusted to different maximum and minimum settings. The maximum setting can be set to a value between 1 and 4, while the minimum setting can be set to a value between 2 and 5. The required torque for installation is 6Nm.

Product Usage Instructions

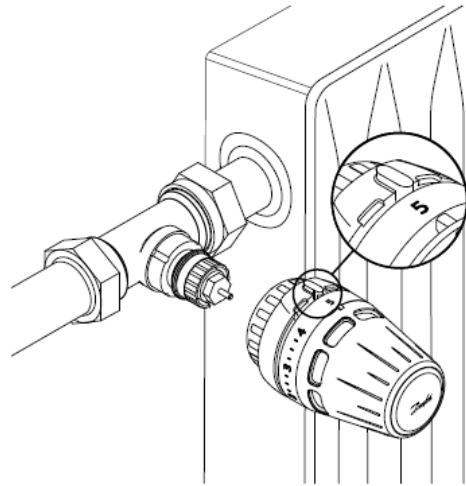
1. Refer to the installation guide for detailed instructions on how to install and adjust the product.
2. Use a torque wrench to tighten the product to the required torque of 6Nm during installation.
3. **Adjust the maximum and minimum settings of the product as needed using the following steps:**
 1. Locate the maximum and minimum adjustment points on the product.
 2. Using a tool, such as a screwdriver, turn the adjustment point clockwise to increase the setting or counterclockwise to decrease the setting.
 3. For the maximum setting, set it to a value between 1 and 4. For the minimum setting, set it to a value between 2 and 5.
 4. Refer to the installation guide for recommended settings based on your specific use case.

Installation

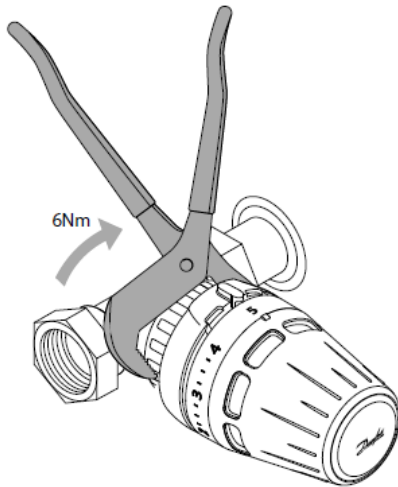
1.



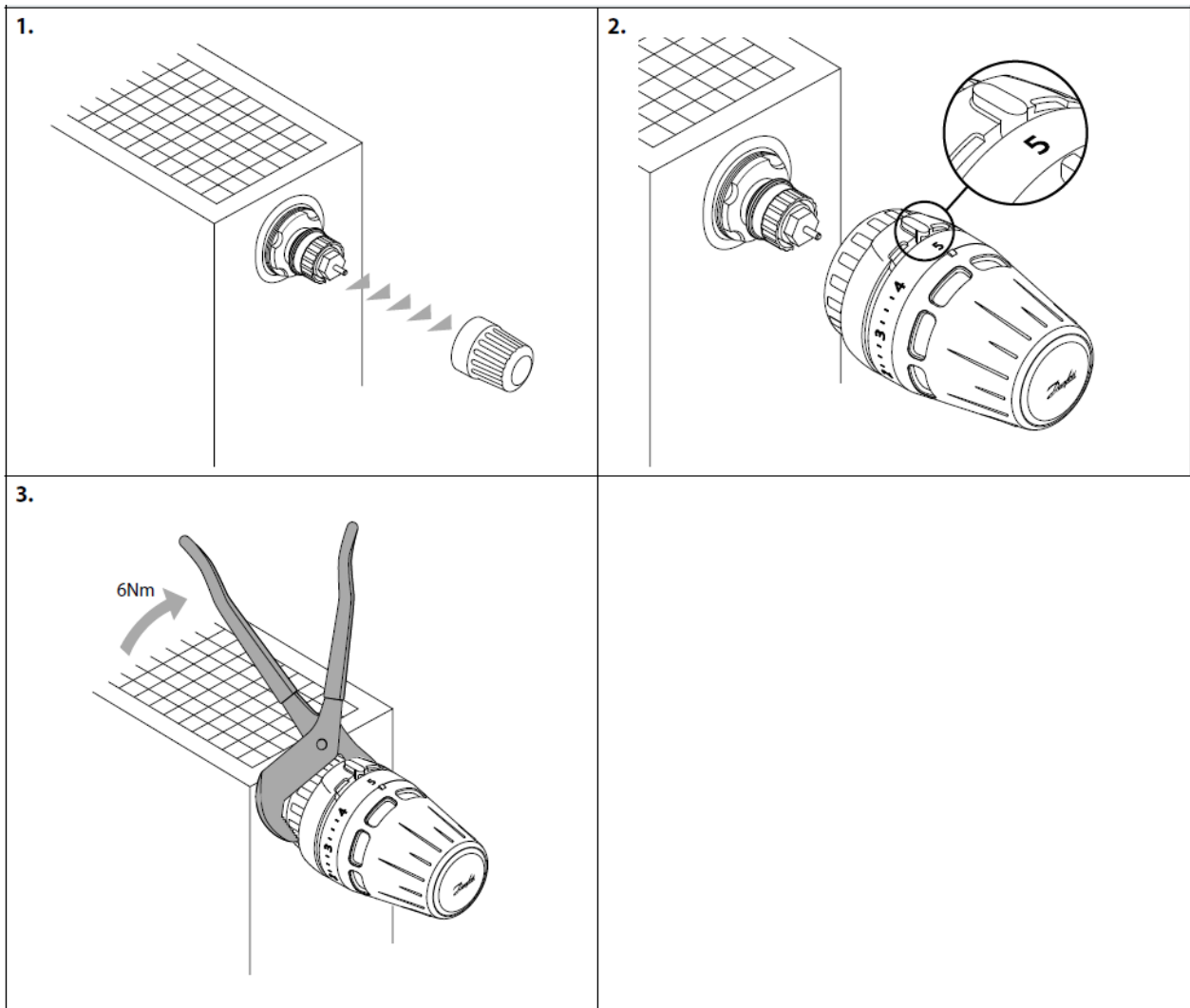
2.



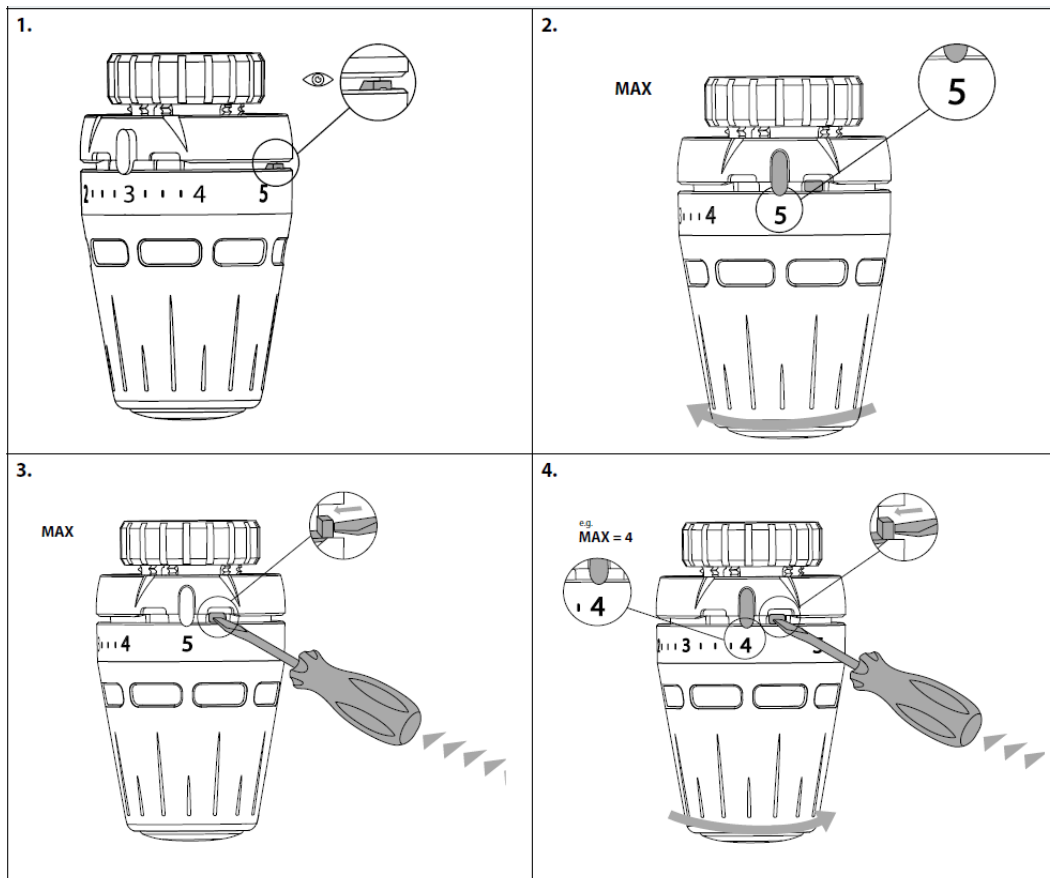
3.



BIV Installation

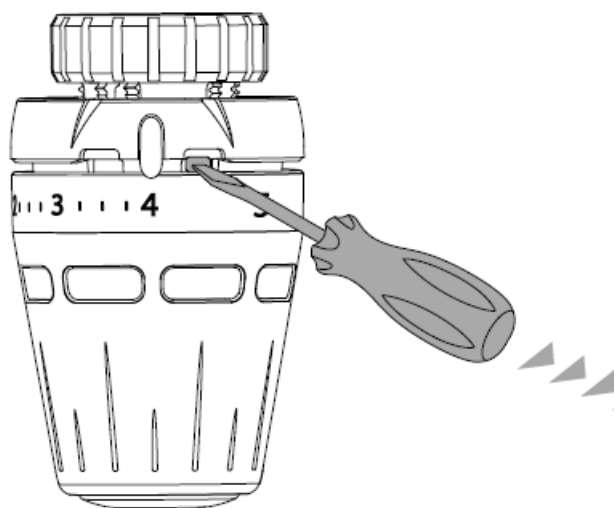


Temperature Limitation

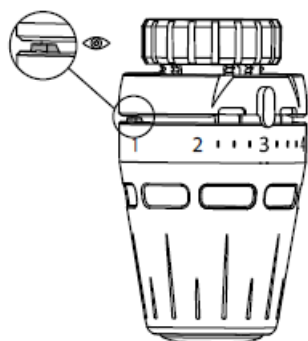


5.

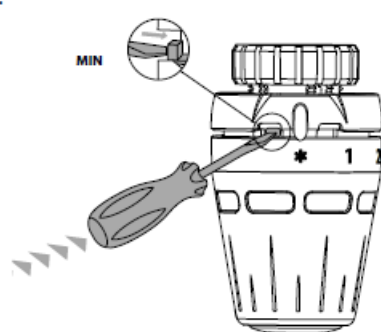
e.g.
MAX = 4



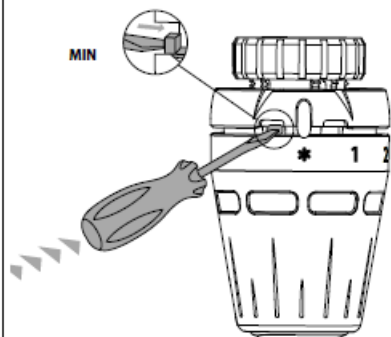
1.



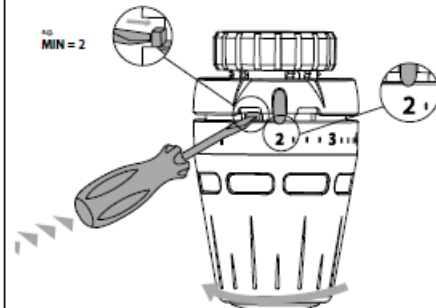
2.



3.

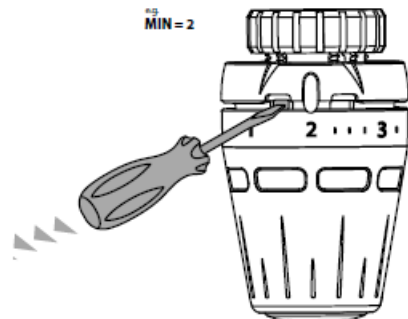


4.

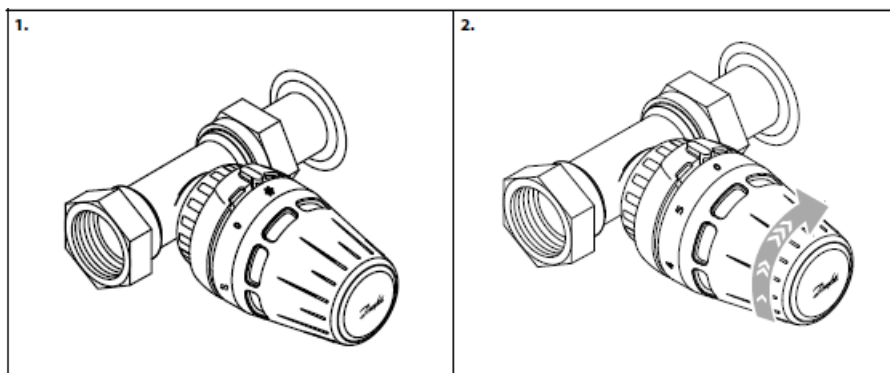


5.

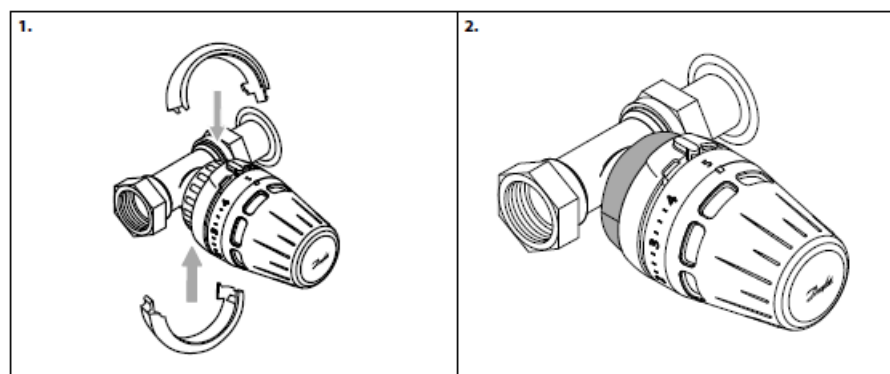
no
MIN = 2




Shut off

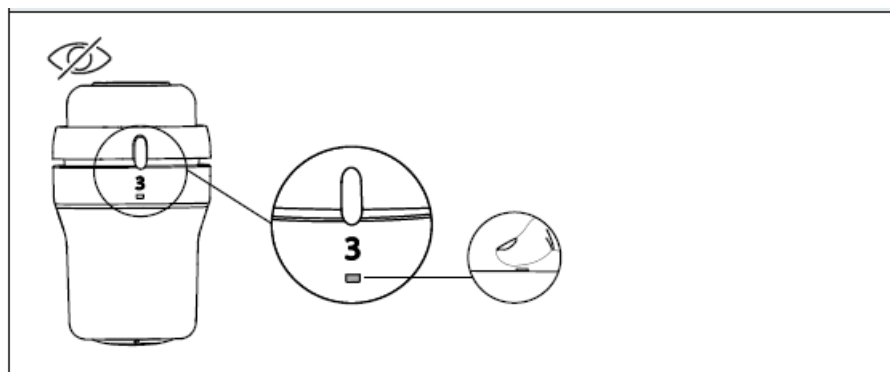


Theft protection



	Code no.
	013G3910

Blind mark



DanfossA/5


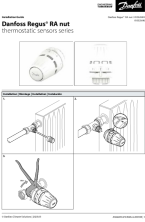
Climate Solutions

danfoss.com

+45 7488 2222

Any information, including, but not limited to information on the selection of product, its application or use, product design, weight, dimensions, capacity or any other technical data in product manuals, catalogs descriptions, advertisements, etc. and whether made available in writing, orally, electronically, on line or via download, shall be considered informative, and is only binding if and to the extent, explicit reference is made in a quotation or order confirmation. Danfoss cannot accept any responsibility for possible errors in catalogues, brochures, videos and other material. Danfoss reserves the right to alter its products without notice. This also applies to products ordered but not delivered provided that such alterations can be made without changes to form, fit or the function of the product. All trademarks in this material are property of Danfoss A/S or Danfoss group companies. Danfoss and the Danfoss logo are trademarks of Danfoss A/S. All rights reserved.

Documents / Resources

	<p>Danfoss Regus RA nut Thermostatic Sensors [pdf] Installation Guide 013G3910, Regus RA nut Thermostatic Sensors, Regus RA nut, Thermostatic Sensors, Sensors, 015G3698</p>
	<p>Danfoss Regus RA nut Thermostatic Sensors [pdf] Installation Guide 013G3910, 015G3695, 015G3696, Regus RA nut Thermostatic Sensors, Regus RA nut, Therm ostatic Sensors, Sensors</p>